

## NOTICE

\*Please make sure that you have all parts indicated and they are in good condition before you begin assembly of this item. Refer to part list and hardware list below for guidance.

\*This item should be assembled on a soft surface to prevent scratching the finish during assembly.

\*This item may require periodic tightening.

\*If you are having difficulty, our friendly Customer Care team is always here to help. Please email [customersupport@safavieh.com](mailto:customersupport@safavieh.com)

## PREPARATION

\*Before beginning assembly of product, make sure all parts are present. Compare parts with part contents list and hardware contents list.

\*If any part is missing or damaged, do not attempt to assemble the product.

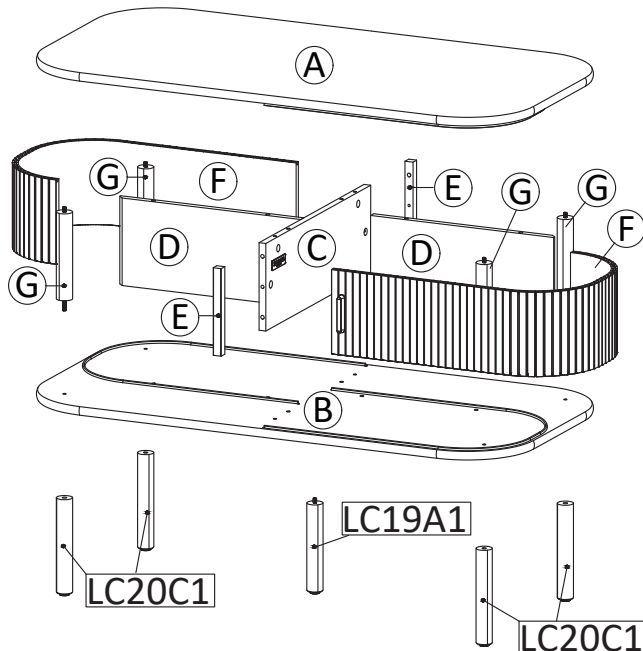
\*Estimated Assembly Time: 45 minutes.

\*Tools Required for Assembly (included): Allen Key

## CARE AND MAINTENANCE

Always use felt pads under all articles to prevent discoloration or softening of the lacquer. Plastic and rubber bases on items can discolor wood. Wipe up spills immediately and avoid common hazards such as hot dishes, harsh solvents and abrasives. Cleaning should be done with a soft lint free cotton cloth dampened with water or furniture polish. On highly used surfaces we recommend applying a quality paste wax which should be used on a regular basis to provide additional protection from scratches and spills. How often you apply the wax depends on how much wear the furniture receives.

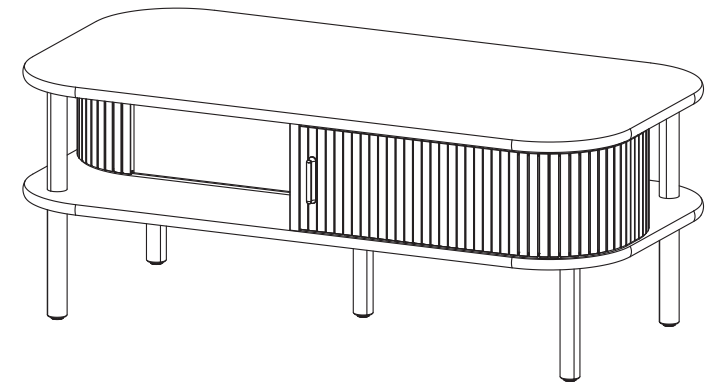
### Part List



 **SAFAVIEH**  
FURNITURE

**Model# COF9606**

**Product Dimensions: 43"Wx22"Dx17"H**



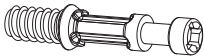


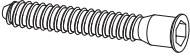
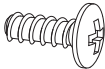





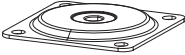
### **WARNING :**

**WEIGHT CAPACITY: 86 LBS.**

**Warning : Do not stand on night stand.**

**Warning : Do not over torque bolts.**

Hardware List

<div>HW1x4</div> <div></div> <div>Ø 6 x 35 mm</div>	<div>HW2x4</div> <div></div> <div>Ø 15 mm</div>	<div>HW3x16</div> <div></div> <div>Ø 8 x 30 mm</div>	<div>HW4x2</div> <div></div> <div>M 7 x 50 mm</div>	<div>HW5x20</div> <div></div> <div>M 4.5 x 12.5 mm</div>
<div>HW6x4</div> <div></div> <div>M 4 x 16 mm</div>	<div>HW7x1</div> <div></div>	<div>HW8x2</div> <div></div>	<div>HW9x4</div> <div></div>	<div>HW PM3x4</div> <div></div>
<div>HW PM2x1</div> <div></div>				

## Part List & HW For Multi-Box Items

Piece	Description	Qty
A	Top Board	1
B	Bottom Board	1
C	Center Board 1	1
D	Center Board 2	2
E	Support Board	2
F	Door	2
G	Pillar	4
LC20C1	Leg 1	4
LC19A1	Leg 2	1

Piece	Description	Qty
HW1	Cambolt	4
HW2	CamLock	4
HW3	Dowel	16
HW4	Screw M 7 x 50 mm	2
HW5	Screw M 4.5 x 12.5 mm	20
HW6	Screw M 4 x 16 mm	4
HW7	Allen Key	1
HW8	Handle	2
HW9	Screw Cap	4
HW PM3	Mounting Plate	4
HW PM2	Mounting Plate	1

## PREPARATION

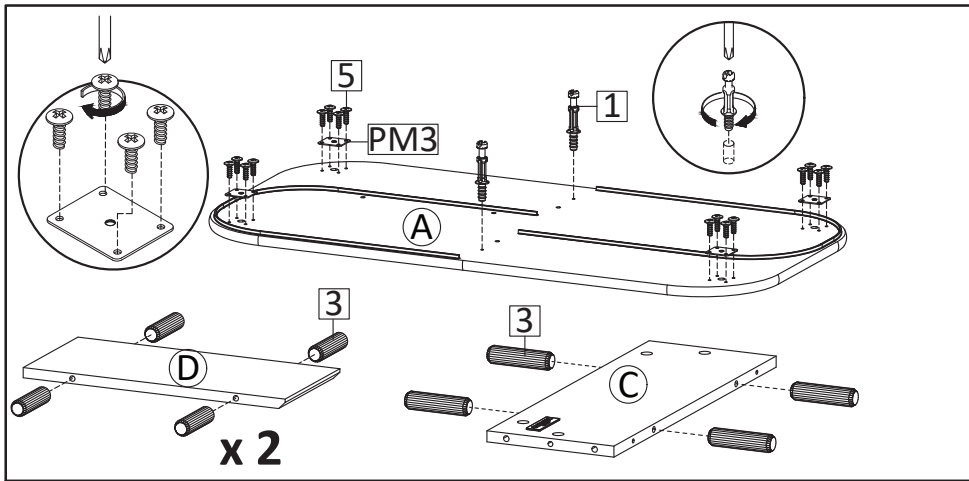
\*Before beginning assembly of product, make sure all parts are present. Compare parts with part contents list and hardware contents list.

\*If any part is missing or damaged, do not attempt to assemble the product.

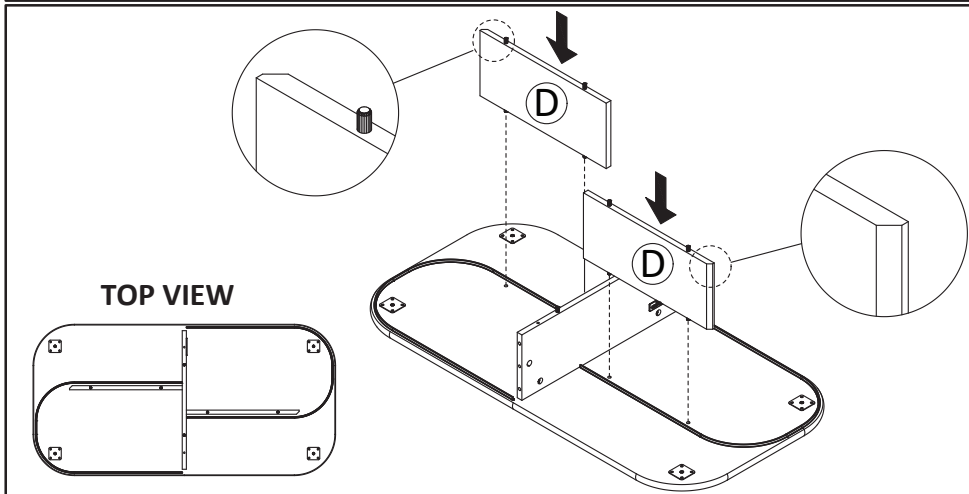
\*Estimated Assembly Time: 45 minutes.

\*Tools Required for Assembly (included): Allen Key

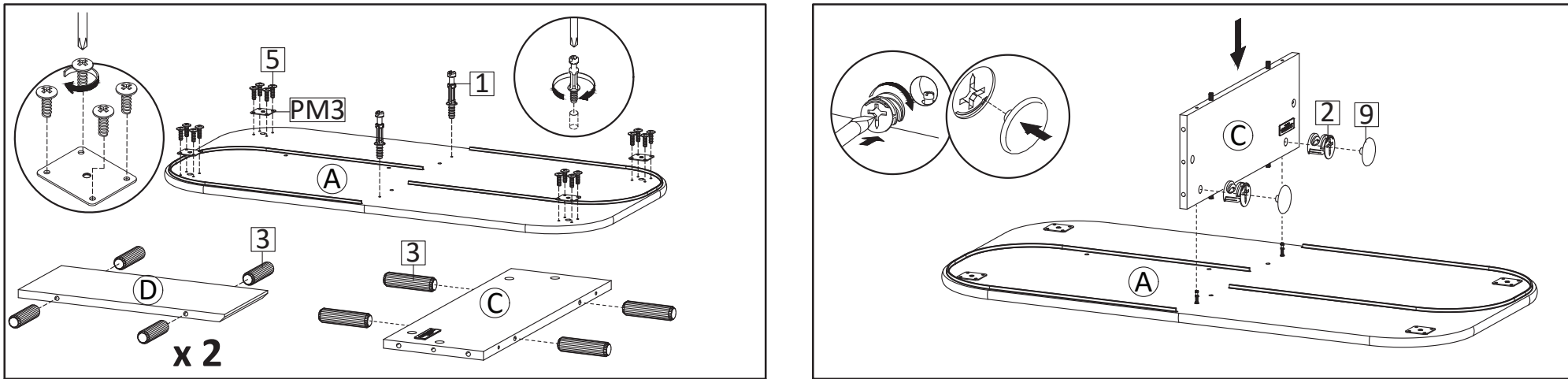
\*If you are having difficulty, our friendly Customer Care team is always here to help. Please email [customersupport@safavieh.com](mailto:customersupport@safavieh.com)



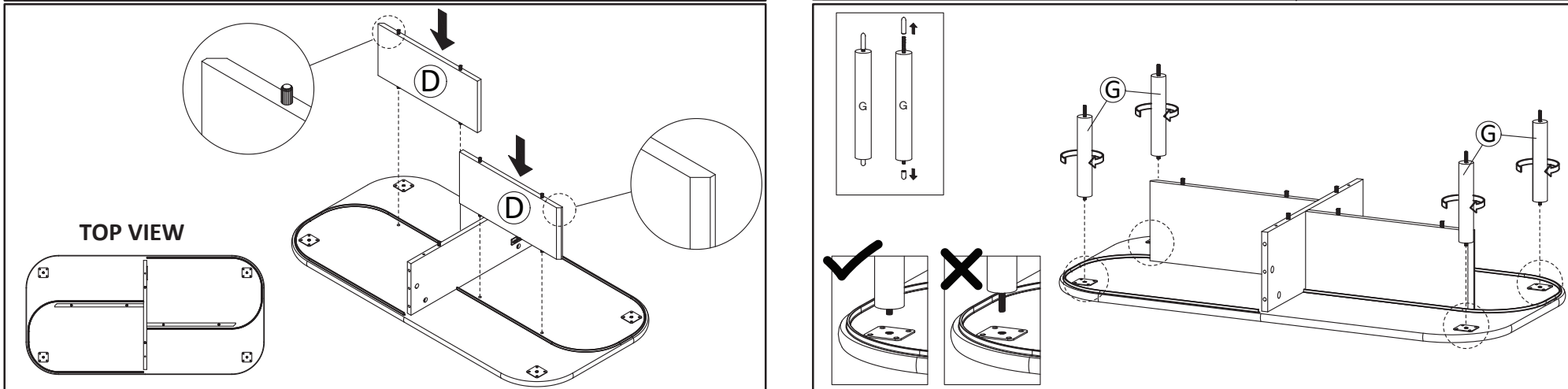
**STEP1:** Insert Cambolt (HW1) into Top Board (A). Insert Mounting Plate (HW PM3) secure with Screw M4.5x12.5mm (HW5) into Top Board (A). Insert Dowel (HW3) into Center Boards (C&D).



**STEP3:** Attach Center Boards 2 (D) into Top Board (A) as picture. Please notice the position of chamfer edge.



**STEP2:** Attach Center Board 1 (C) into Top Board (A). Insert Camlock (HW2) then tighten using screwdriver. Put Screw Cap (HW9) over the camlock.



**STEP4:** Install Pillar (G) into Top Board. Please carefully choose the shorter bolt goes into the mounting plate. Tighten by rotating the Pillar clockwise.

# PREPARATION

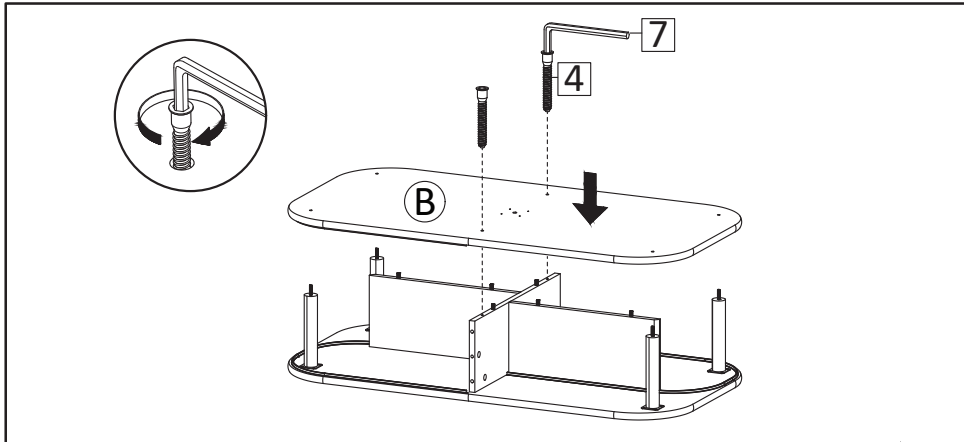
\*Before beginning assembly of product, make sure all parts are present. Compare parts with part contents list and hardware contents list.

\*If any part is missing or damaged, do not attempt to assemble the product.

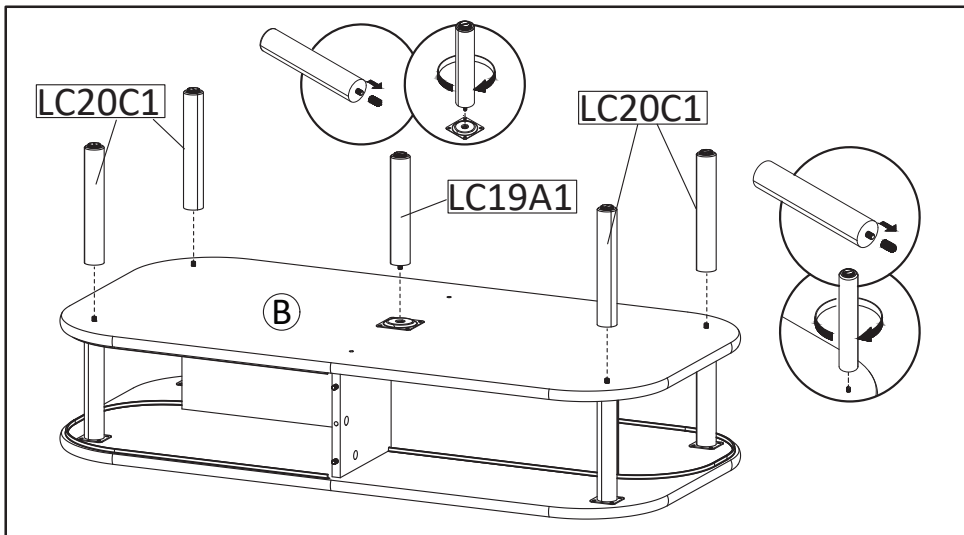
\*Estimated Assembly Time: 45 minutes.

\*Tools Required for Assembly (included): Allen Key

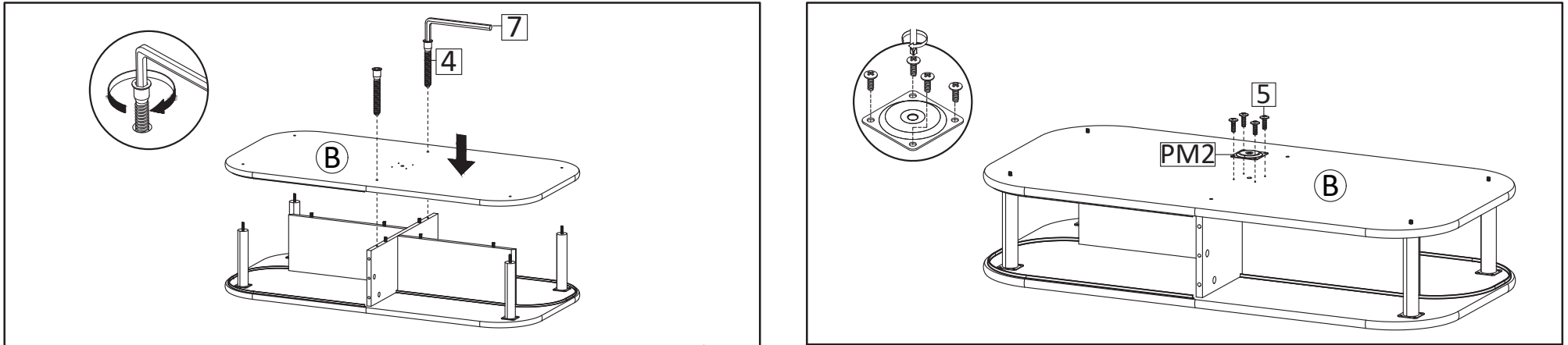
\*If you are having difficulty, our friendly Customer Care team is always here to help. Please email [customersupport@safavieh.com](mailto:customersupport@safavieh.com)



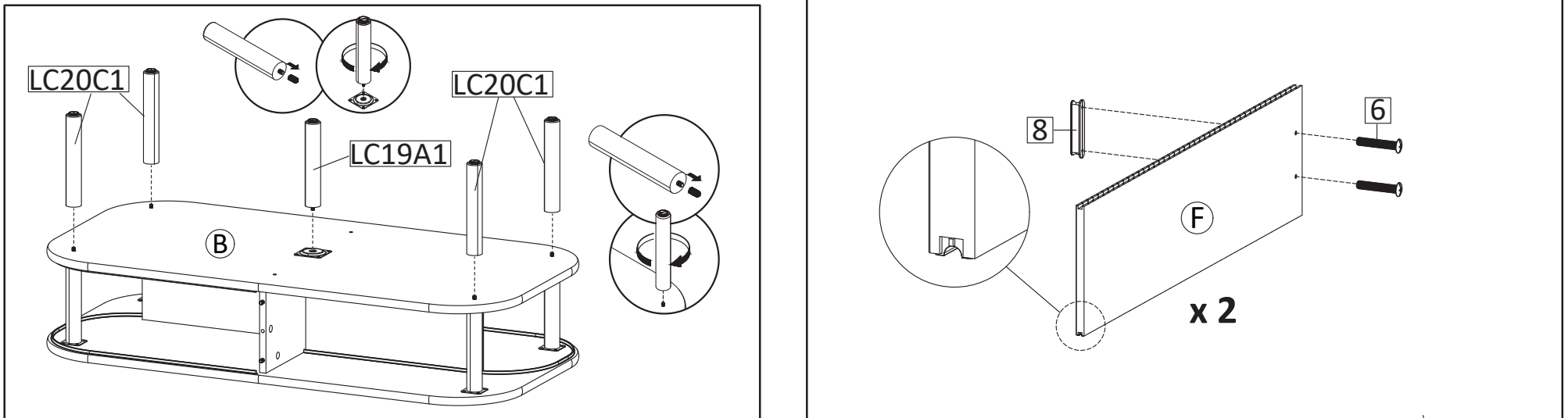
**STEP5:** Place Bottom Board (B) with the bolts of pillars get through the holes. Secure with Screw M7x50mm (HW4), tighten screws using Allen Key (HW7) as figure.



**STEP7 :** Install Leg 1 (LC20C1) into Bottom Board (B),tighten by rotating the leg clockwise . Install leg 2 (LC19A1) into Mounting Plate, tighten by rotating the leg clockwise.



**STEP6:** Insert Mounting Plate (HW PM2) into Bottom Board (B). Secure with Screw M4.5x12.5mm (HW5) as figure.



**STEP8:** Install Handle (HW8) secure with Screw M4x16mm (HW6) into Doors (F).

# PREPARATION

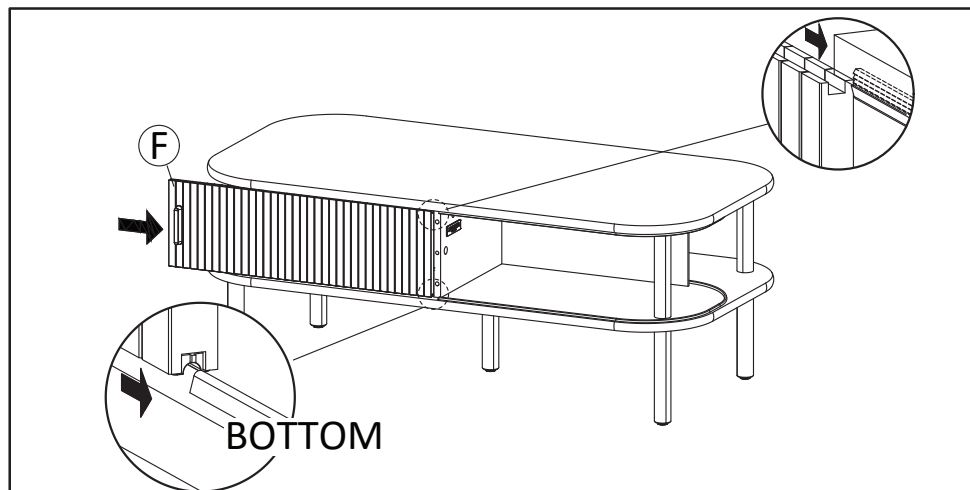
\*Before beginning assembly of product, make sure all parts are present. Compare parts with part contents list and hardware contents list.

\*If any part is missing or damaged, do not attempt to assemble the product.

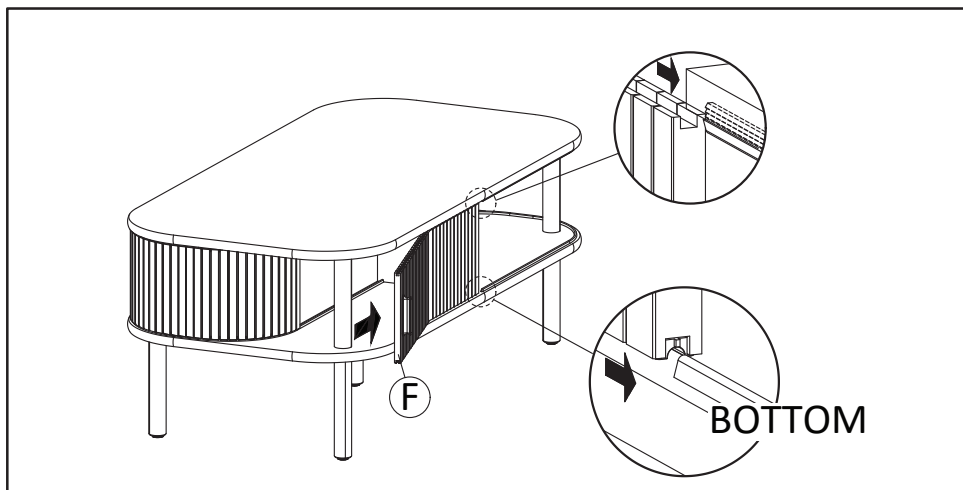
\*Estimated Assembly Time: 45 minutes.

\*Tools Required for Assembly (included): Allen Key

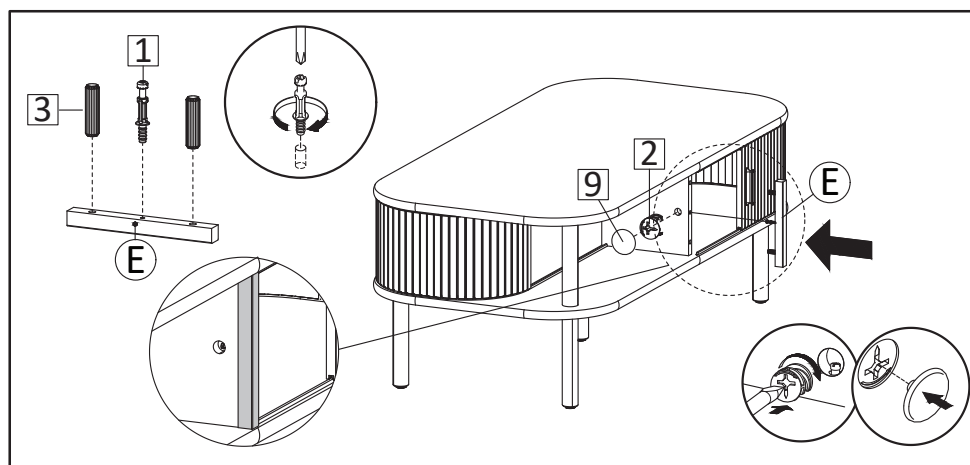
\*If you are having difficulty, our friendly Customer Care team is always here to help. Please email [customersupport@safavieh.com](mailto:customersupport@safavieh.com)



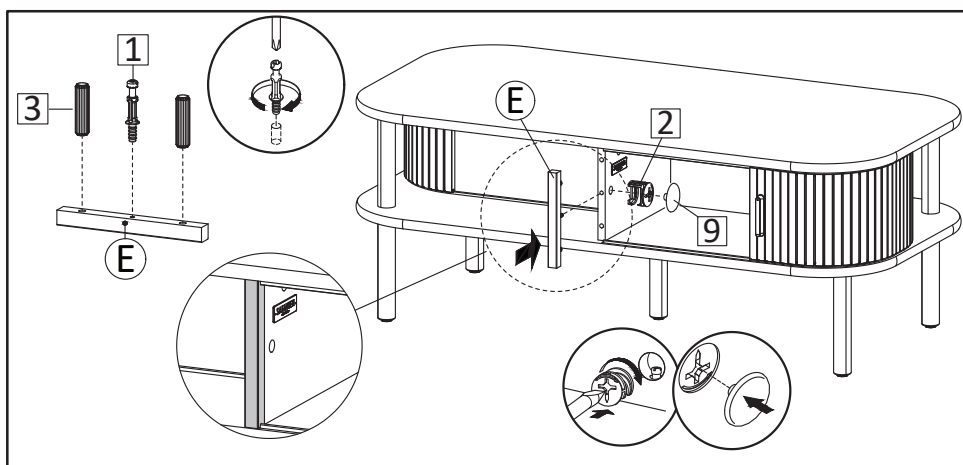
**STEP9:** Insert the Door (F) into the track. Carefully examine the tambour door. The side with plastic insert is placed at bottom track, while the side without plastic insert inside groove is for upper track.



**STEP10:** Insert the other Door (F) into the track. Follow the notes at step 9.



**STEP11:** Insert Cambolt (HW1) and Dowel (HW3) into Support Board (E). Install the Support Board (E) at front of the Center Board. Insert Camlock (HW2) then tighten using screwdriver. Put Screw Cap (HW9) over the camlock as picture.



**STEP12:** Insert Cambolt (HW1) and Dowel (HW3) into Support Board (E). Install the Support Board (E) at front of the Center Board. Insert Camlock (HW2) then tighten using screwdriver. Put Screw Cap (HW9) over the camlock as picture.

## PREPARATION

- \*Before beginning assembly of product, make sure all parts are present. Compare parts with part contents list and hardware contents list.
- \*If any part is missing or damaged, do not attempt to assemble the product.
- \*Estimated Assembly Time: 45 minutes.
- \*Tools Required for Assembly (included): Allen Key
- \*If you are having difficulty, our friendly Customer Care team is always here to help. Please email [customersupport@safavieh.com](mailto:customersupport@safavieh.com)

