

# Utopia Alley Wall Clock

## TROUBLESHOOTING CHECKLIST

- **Do the hands spin freely around the full dial?** *Since the distressed iron clock dial surface is not always 100% the same depth all around, the hands may need to be pulled up to allow movement over the thickest part.*
- **Are the clock hands bowed?** *The hands can be removed to flatten if you like, but be sure to press hard on the hour hand (at the center) to be certain it is well attached.*

*If you need to remove the hands, follow these instructions to replace them:*

## HANDS REPLACEMENT GUIDE

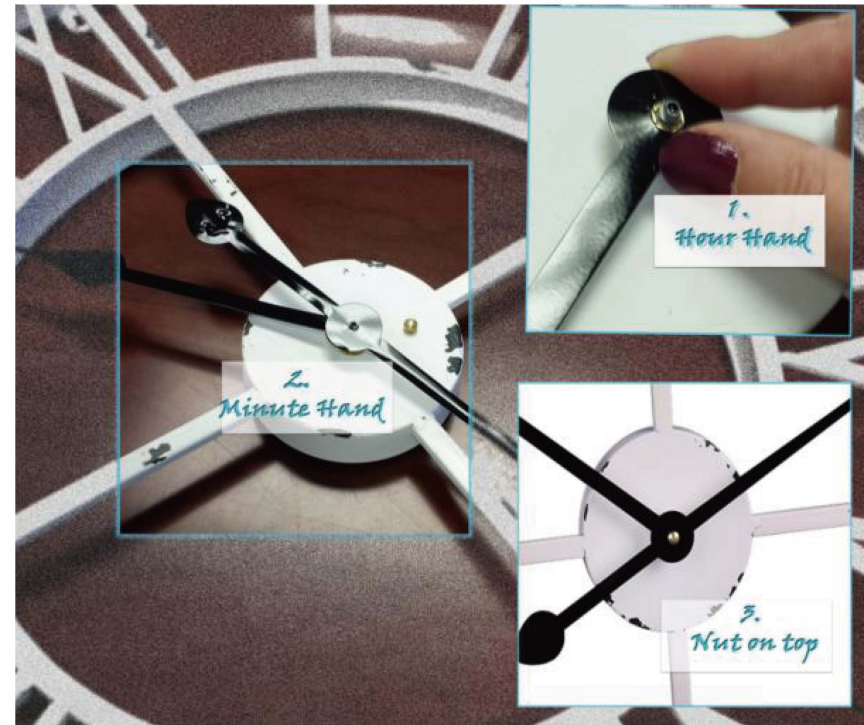
- 1) The hour hand goes on first. In the photo, it is the one with the person's hand showing to press firmly as that will lock it to the turning mechanism
- 2) The minute hand is notched and will only rest on the post one way. Don't force it, but instead, swivel it as you press it on and it will fall onto the post when it is rotated the correct direction
- 3) The nut then screws on top.
- 4) Once on, gently spin each hand fully around in a circle to see if there are any spots it rubs the clock surface. If so, gently pull up to reposition the hand.

With these steps, knowing it is ticking, you should be able to see the hands move slightly with each tick.

Note: There is a washer part attached to the hour hand. It should not be separate. It centers on the post when pressed.

### ⚠ WARNING

Manufacturer and seller expressly disclaim any and all liability for personal injury, property damage or loss, whether direct, indirect, or incidental, resulting from the incorrect attachment, improper use, inadequate maintenance, or neglect of this product.



Thank you for purchasing Utopia Alley Products. Please contact us if you have difficulty with assembly or need replacement parts. Utopia Alley customer service is here to assist you.  
Email: [CustomerService@utopiaalley.com](mailto:CustomerService@utopiaalley.com)  
Please attach your name and Order ID so that we can assist you better.