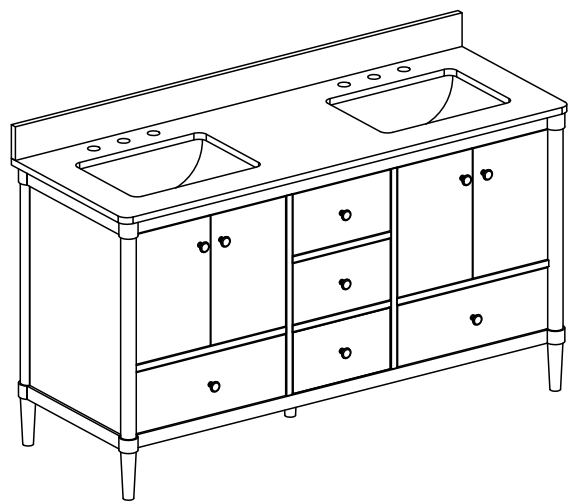


ETHAN 60"

BATHROOM VANITY SET

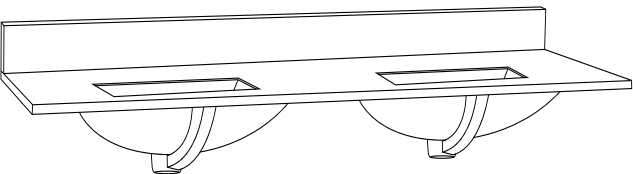
SKU: **ETHAN60QZ-OAK**

Colors/Finishes:OAK
Nominal Dimension:60W*22D*34H inches



Contents

60"Vanity.....PAGE2
60"Vanity Top.....PAGE3
Vanity Installation.....PAGE4



VANITY FEATURES:

- 1.Material: Solid popular wood frame, high-quality veneer plywood.
- 2.Doors: 4 soft-close doors, Austria BLUM Soft-close hinges system.
- 3.Drawers: 5 soft-close drawers, DTC concealed soft-close sliders.
- 4.Hardware: Metal Alloy.
- 5.Installation Type: Freestanding.
- 6.Built-in Adjusters: Adjustable height levelers.
- 7.Vanity Top: High-quality quartz/marble with single undermount sink.
- 8.Assemble required: No
- 9.Vanity top Included: Yes
- 10.Mirror Included: Optional
- 11.Medicine Cabinet Included: Optional

VANITY TOP FEATURES:

- 1.Material: Highly resilient, nonporous, scratch-and stain-resistant quartz,or natural Italian Carrera white marble.
- 2.Top Color: Carrera white.
- 3.Sink: 2*20"undermount rectangle sink.
- 4.Faucet Holes: Top pre-drilled for 8"widspread faucet holes.
- 5.Sink Certified: CUPC certified.
- 6.Backsplash: 4"backsplash included.
- 7.Faucet Included: No
- 8.Nominal Dimension(W*D*H): 60W*22D*0.79H inches

ETHAN 60"

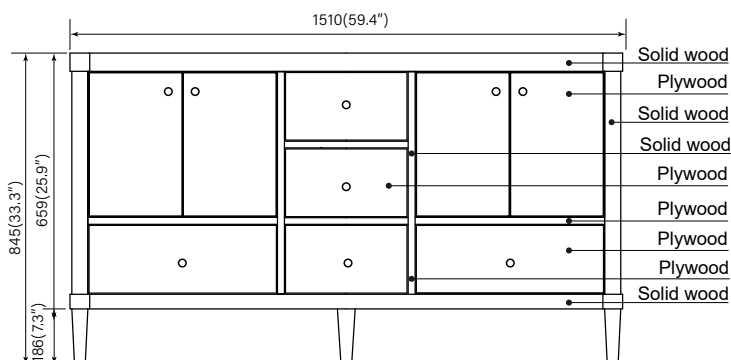
BATHROOM VANITY SET

SKU: ETHAN60QZ-OAK

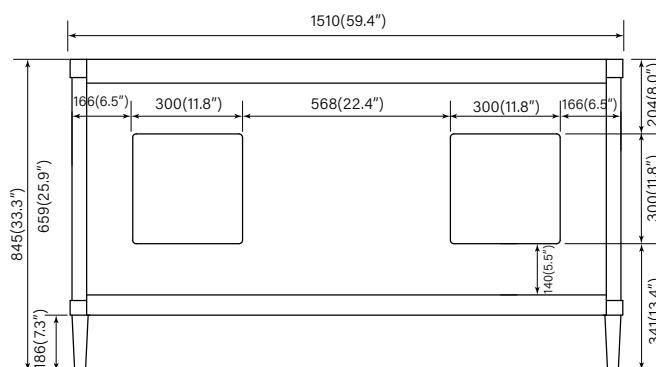
COMPONENTS:

Vanity	ETHAN36QZ-OAK	ETHAN48QZ-OAK	ETHAN60QZ-OAK
Vanity Top	QZ36YN20	QZ48YN20	QZ60YN20
	MB36YN20	MB48YN20	MB60YN20
Wall Mirror	W5FM2836GD	W5FM4032GD	W5FM6028GD
Medicine Cabinet	W8MCL2430	W8MCL4830	W8MCL6030

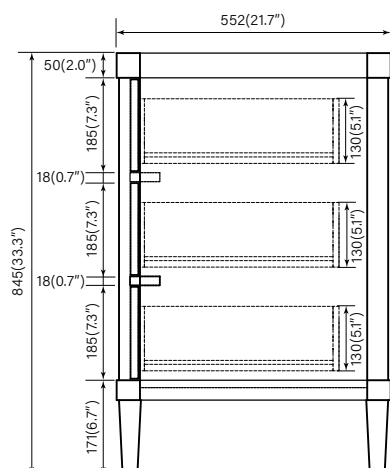
Front



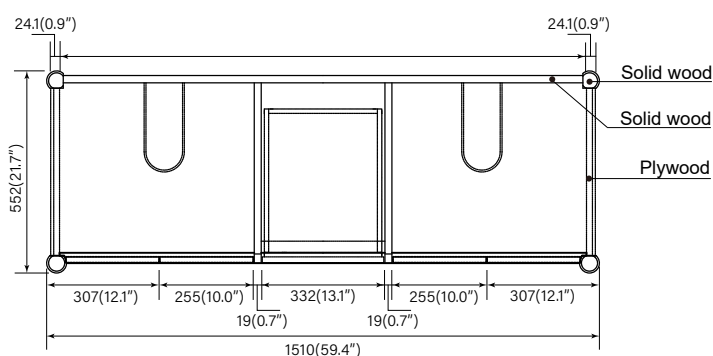
[Back](#)



Side



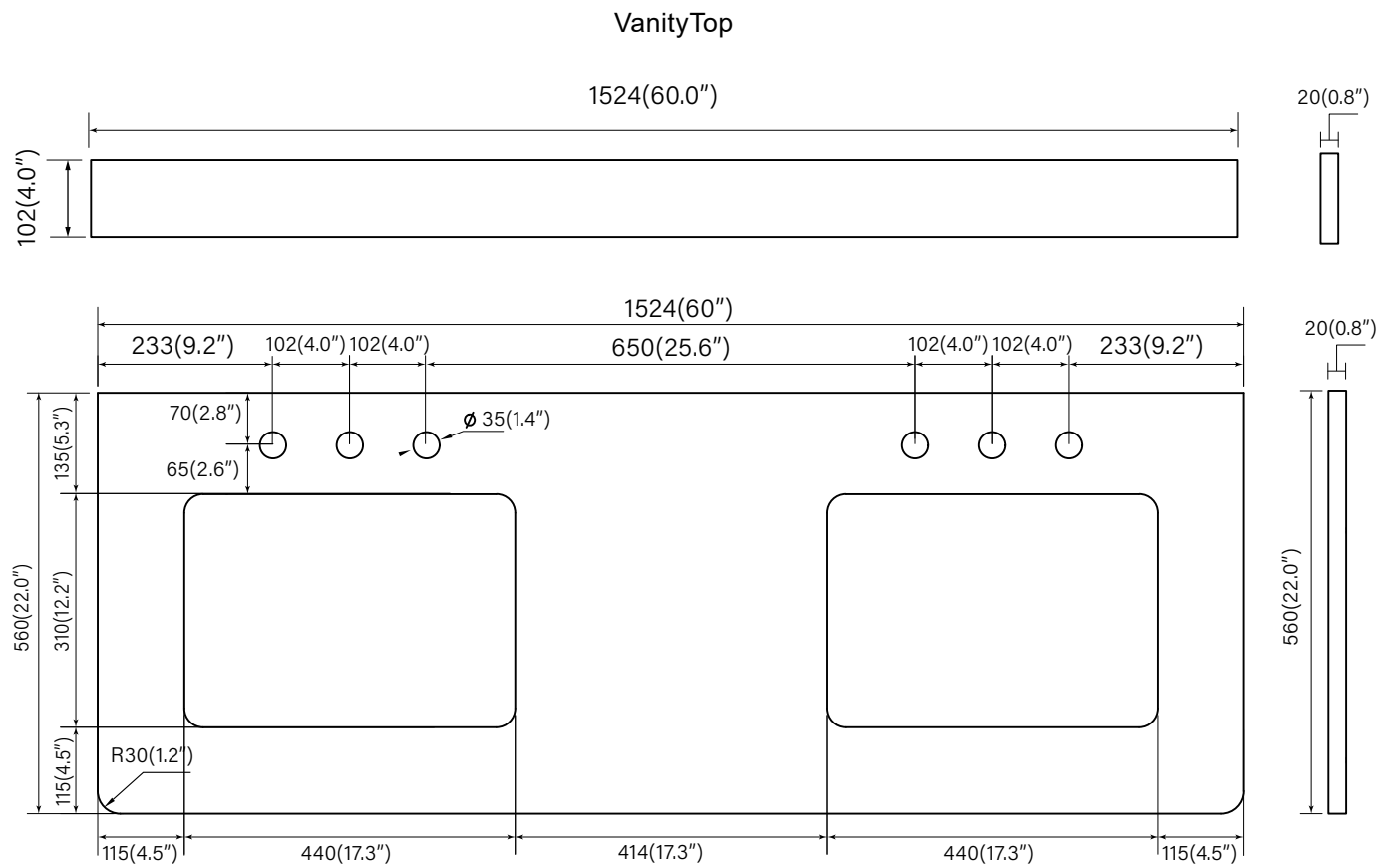
Top



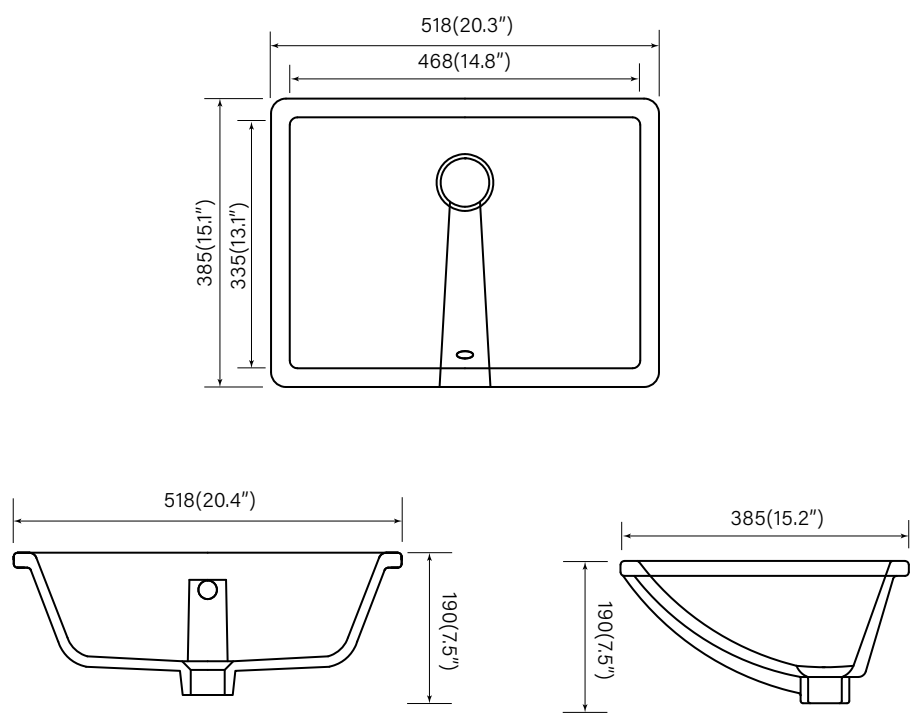
ETHAN 60"

VANITY TOP

With rectangular undermount sink

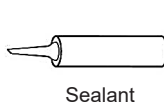


Undermount Sink



Vanity Installation

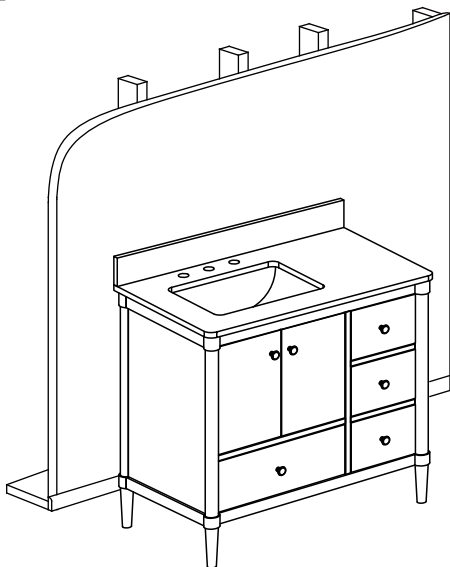
SUGGESTED TOOLS AND MATERIALS:



INSTALLATION INSTRUCTLONS

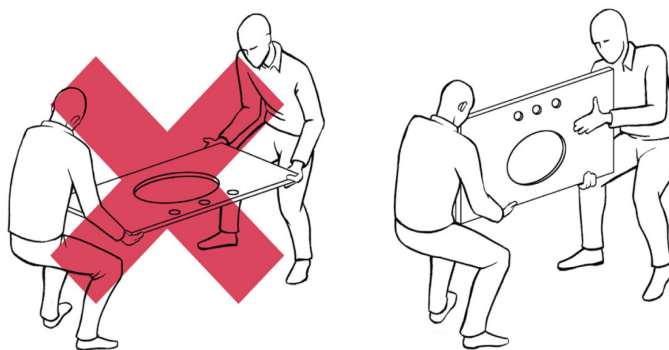
We recommend consulting a professional if you are unfamiliar with installing bathroom fixtures and plumbing .We accept no liability for any damage to the floor,plumbing, vanity cabinet,sink,counter top,or personal injury during installation.

1



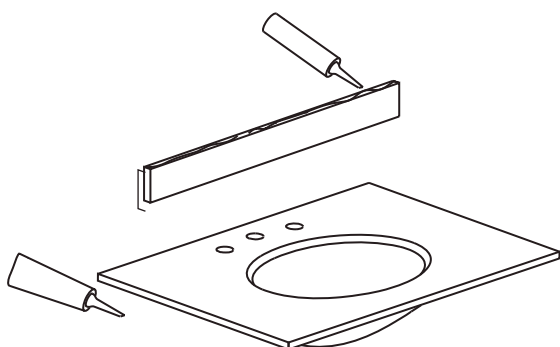
Remove vanity from box and examine vanity for any defects or damage.Carefully place vanity against wall.

2



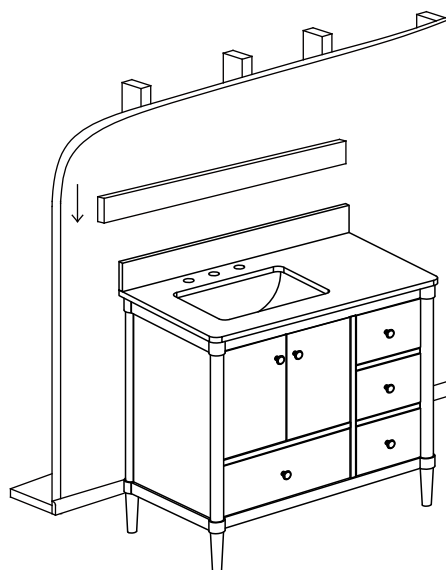
Always use a two man crew,a single person crew is much more likely to break or chip the stone top.

3



Apply bead of quality sealant evenly along the bottom of backplash and the top of the vanity.

4



Finally,place the bottom side of back splash with sealant onto the counter top and check alignment of back splash.