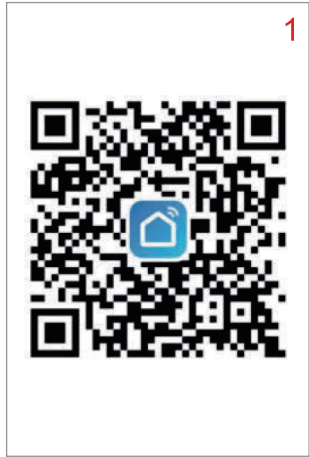
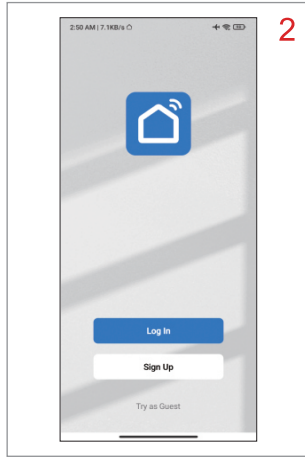


Smart Control Connection Guide

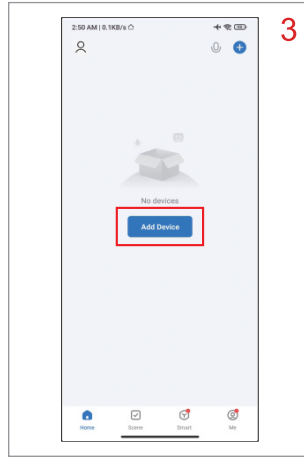
Fan Operation Instructions



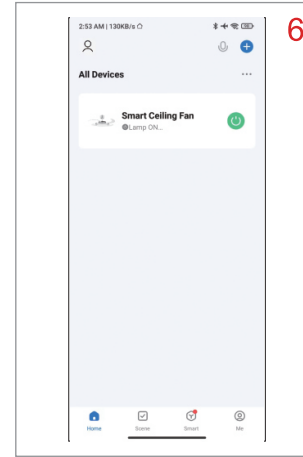
1. Install "Smart Life" APP on Play Store(Android) or App Store(IOS), can also scan the QR code.



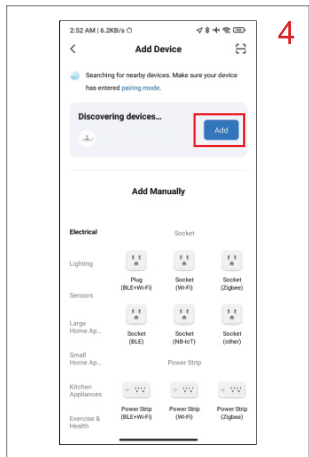
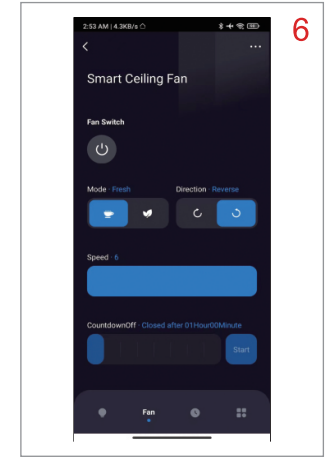
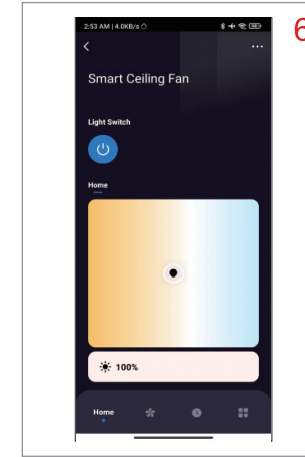
2. Open "Smart Life" APP, register an account and log in.




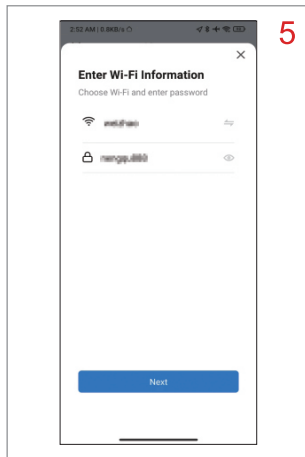
3. Click "Add Device" button.(Make sure must be connected WI-FI and turn on BT function and Location function on your phone,for discovering the fan quickly.)



6. Now,you can control the fan by the APP!
(IF the fan hasn't been discovered, you can switch off the fan's receiver for 5 minutes, and try again from step.4)
(Please make sure your WI-FI is available and has good signal, and ONLY SUPPORT 2.4G WI-FI !)




4. Switch on the fan's receiver.And long press the key which has  on remote control until the receiver buzzing 5 times.



5. When the fan has been discovered, click "Add", enter WI-FI information which your phone has connected.

Need Help?

If you encounter any issues during the connection process or fan operation, please do not hesitate to contact us. Our support team is ready to assist you.

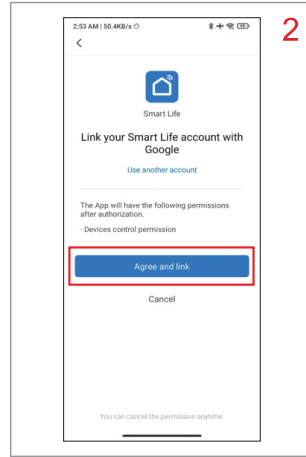
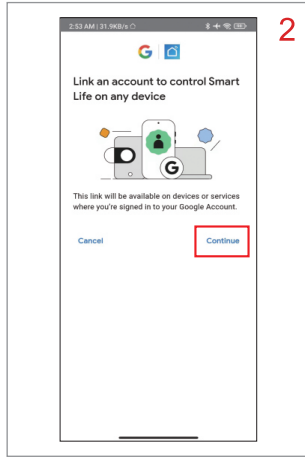
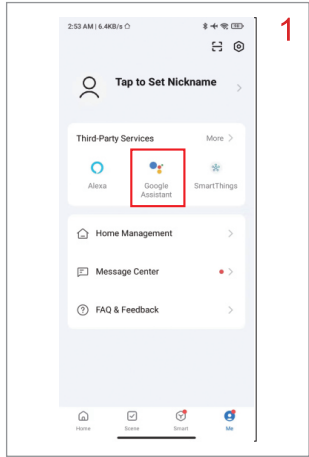
 + 1 (888) 969-6880

 greenever@grandjoyhome.com

 www.greenever.grandjoyhome.com

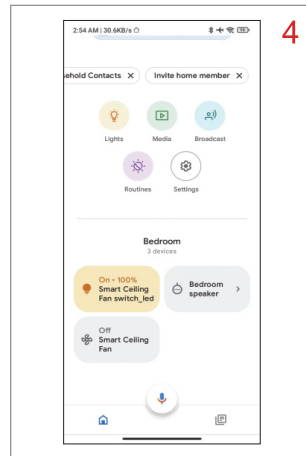
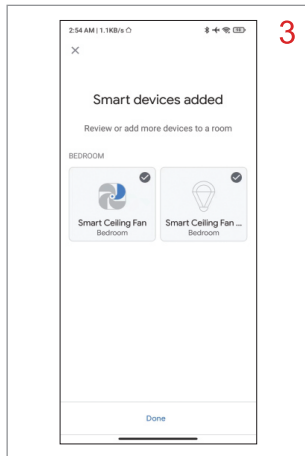
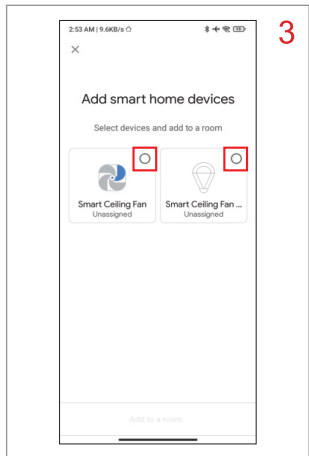
To Google Assistant

Make sure your fan has paired with "Smart Life" APP, and installed "Google Home" APP on your phone.



1. Open "Smart Life" APP, go to the "Me" Tag, click "Google Assistant", and click "Login" at the top right-hand corner.

2. Click "Continue" and click "Agree and link", then it will find the device.



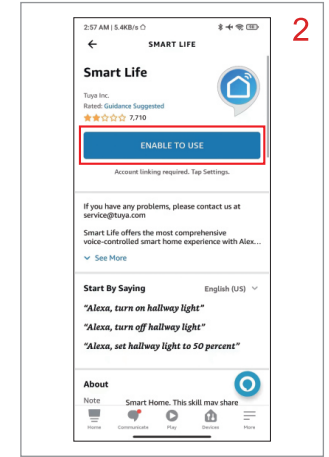
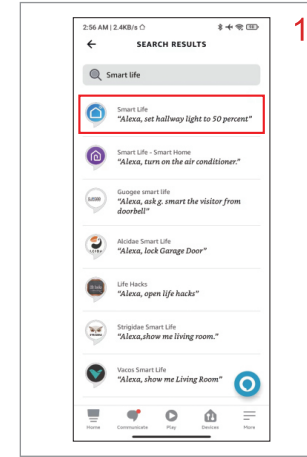
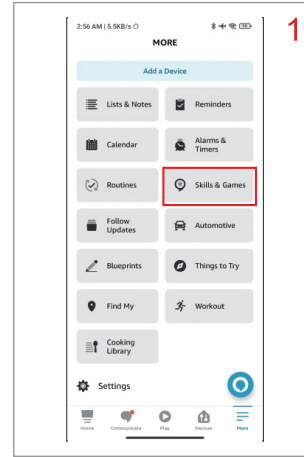
3. 2 devices were found, and add 2 devices to a room.

4. Now, you can control the fan by the Google Assistant, you can say such as "OK Google, turn on the fan." "OK Google, brighten the light."

(You can control by Google's smart speaker or other smart speaker with Google Assistant built-in.)

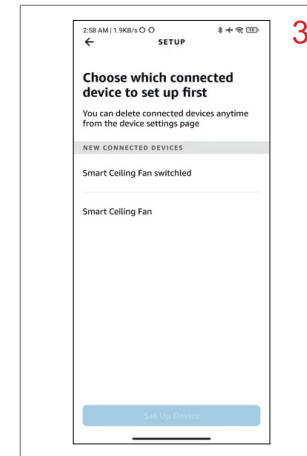
To Amazon Alexa

Make sure your fan has paired with "Samrt Life" APP, and installed "Amazon Alexa" APP on your phone.

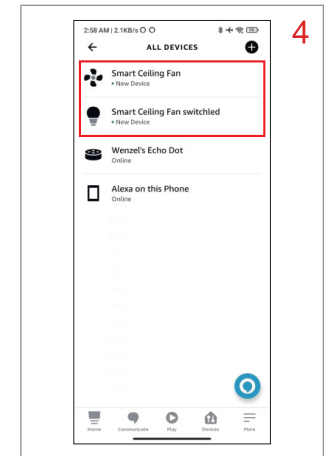


1. Open "Amazon Alexa" APP, go to the "More" Tag, click "Skills and Games", search "Smart Life" (Blue icon).

2. Click "ENABLE TO USE", operate according to the prompts.



3. 2 devices were found, and set-up 2 devices.



4. Now, you can control the fan by the Amazon Alexa, you can say such as "Hey Alexa, turn on the fan." "Hey Alexa, turn off the light."