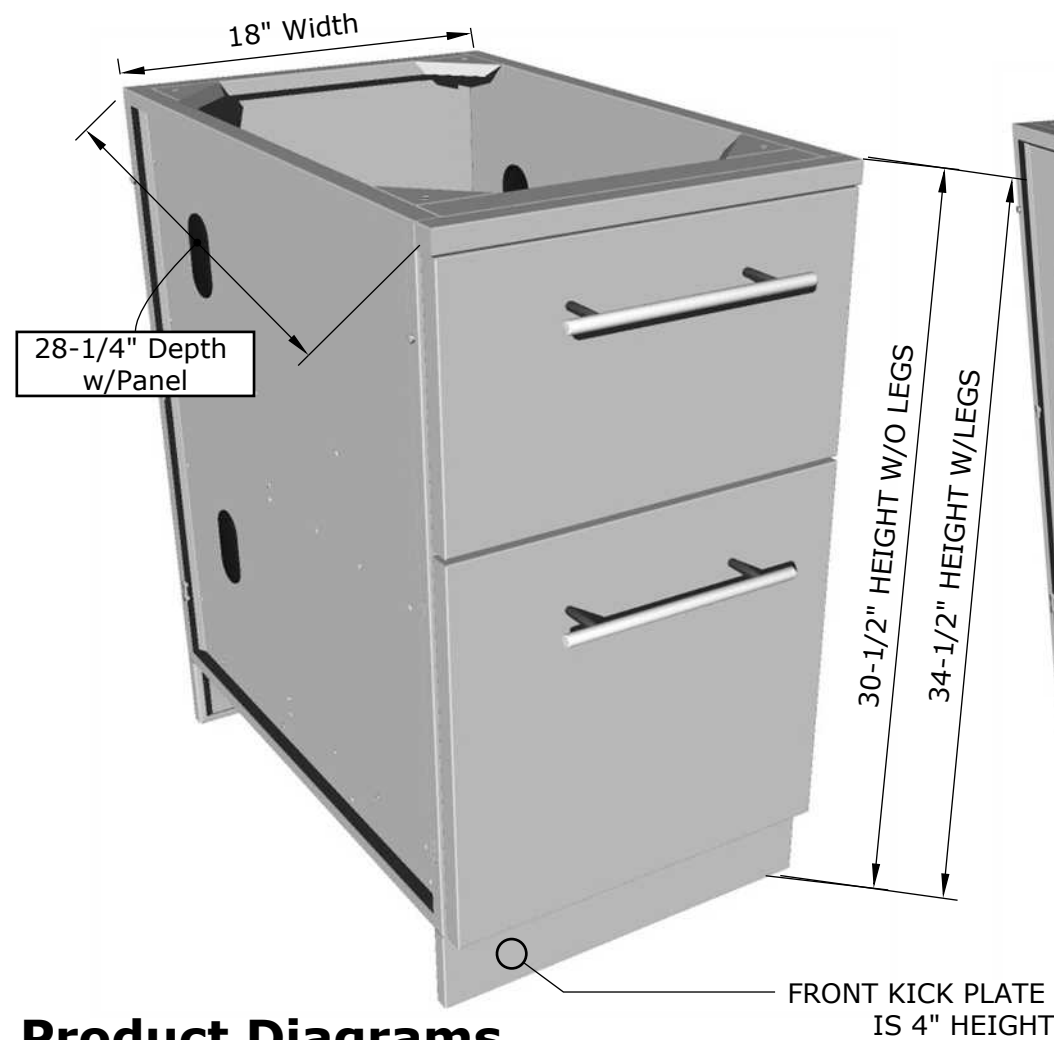
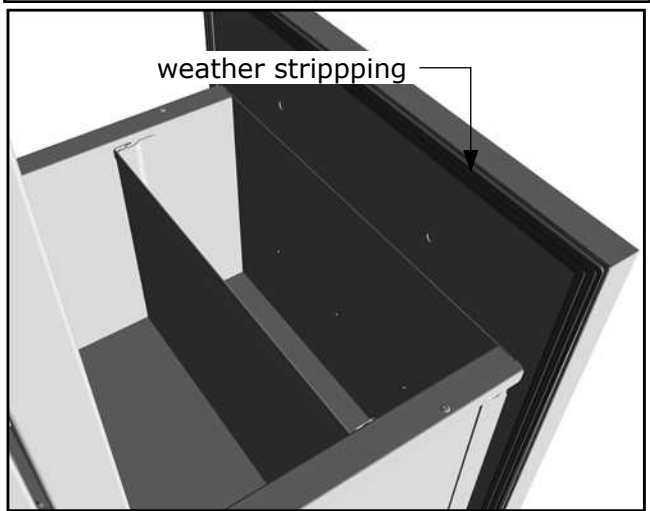
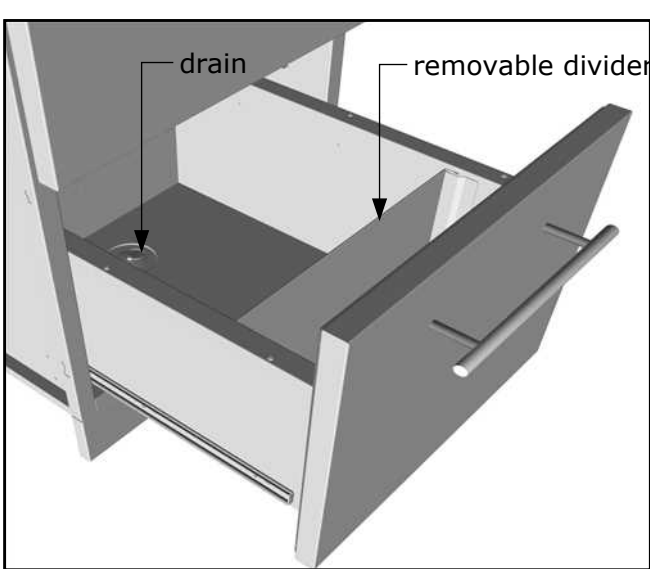


Product Dimensions



Product Configurations



SUNSTONE®
SUNSTONE METAL PRODUCTS
16004 CENTRAL COMMERCE DR.
PFLUGERVILLE, TEXAS 78660
Tel: 888.934.9449

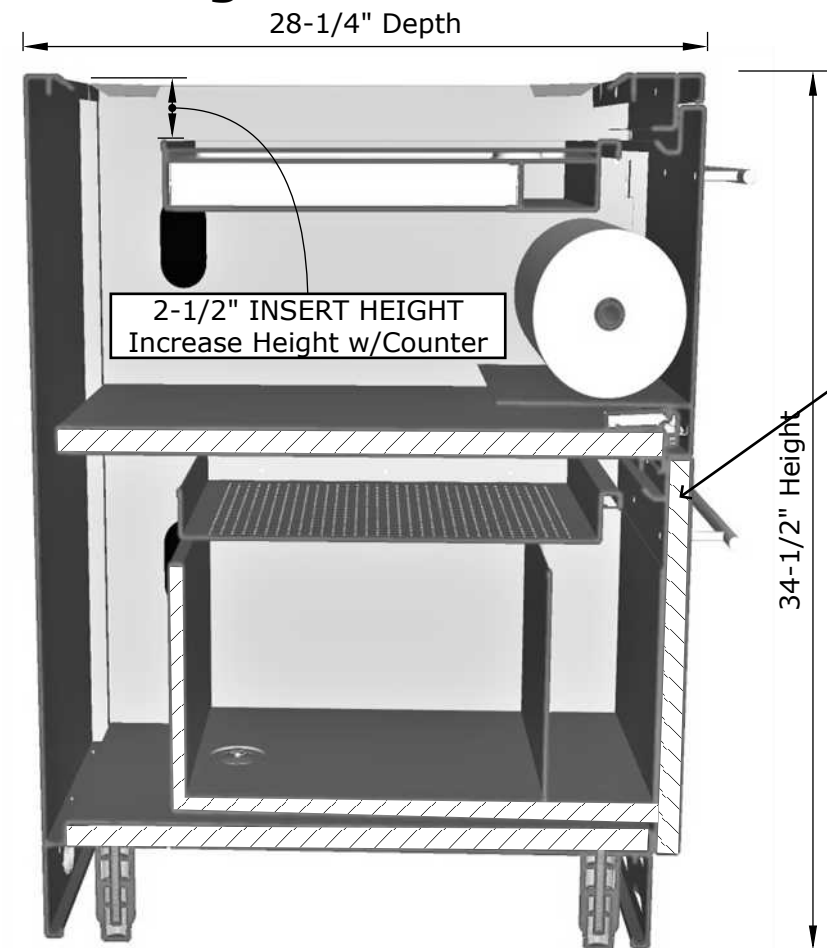
PRODUCT
18" Paper Towel/Cutlery Drawer w/Insulated Ice Chest Dry Storage Drawer
Item No. SBC18DPIC

- Lifetime Structure Warranty
- 304 Stainless Steel Structure
- Front & Back Kick-Plates
- Easy Pin-Lock Installation
- Covered Access Ports
- Adjustable Peg-Legs
- Optional Wheel Casters
- Rain Gutter on Both Drawers
- Paper Towel & Cutlery Drawer
- Weather Stripping
- Dry Storage Pantry Drawer
- Cutting Board
- Flexible Drain for Hose

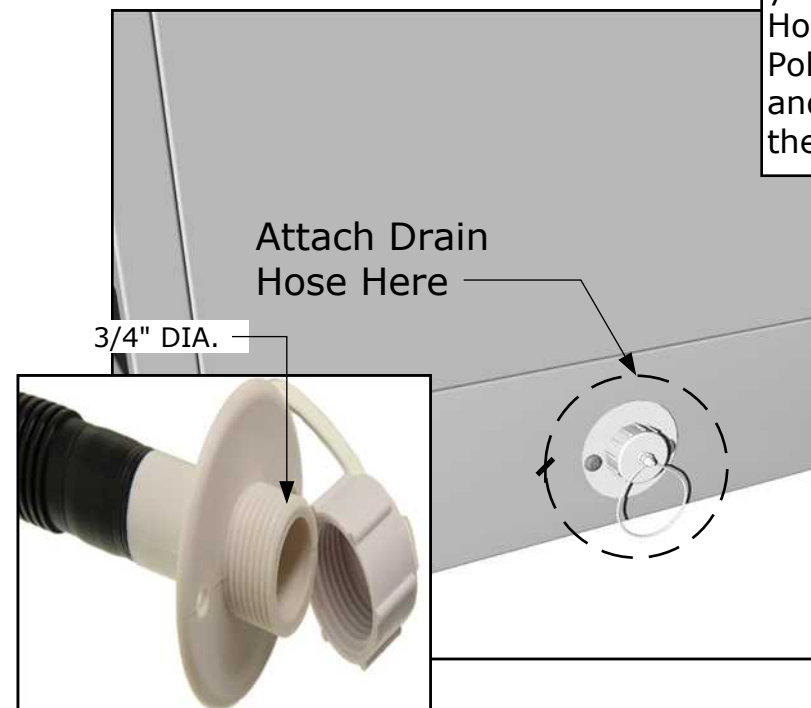
PRODUCT DIMENSIONS
18"W x 28-1/4"D (w/Doors) x 34-1/2"H (w/Legs) or 30-1/2"H (no Legs) or Upto 36" Max Adjustable Height

MATERIAL SPECS
304 Stainless Steel for the Entire Structure, 20 Gauge for Door Panel , 20 Gauge for Cabinet Panel, 304 SS Peg Legs, 304 SS Rod Handles

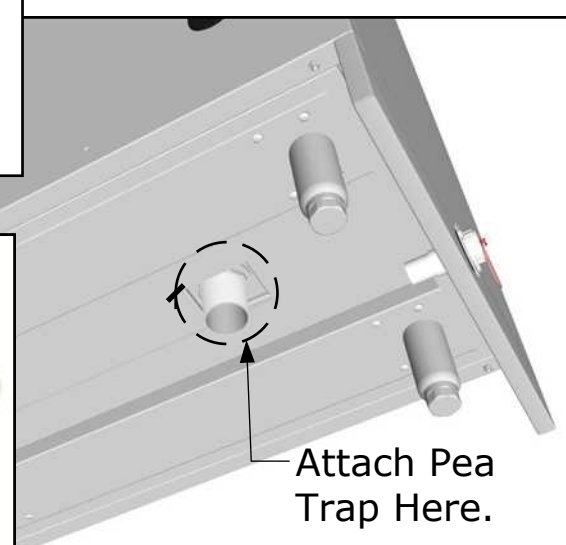
Product Diagrams



Double Walled Insulated Drawer & Lower Box



Cabinet has Bottom Drain, with Pea Trap included and Flex Hose you can attach a standard Garden Hose to outside back of Cabinet Polypropylene drain trap on one end and ABS plastic evacuation flange on the other end.



ADA COMPLIANT LEGS/KICKPLATES NOT AVAILABLE ON THIS CABINET BECAUSE OF DRAIN