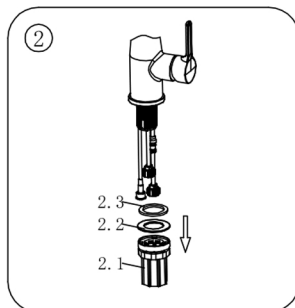
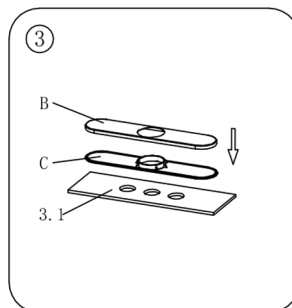


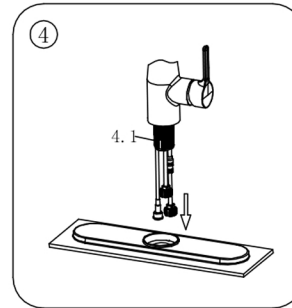
1. Close the water supply valve under the sink or the water in the main water supply area, disconnect the water supply pipe, and remove the old faucet.



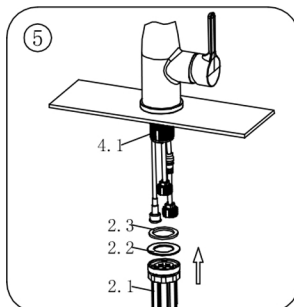
2. Take out the tap and remove the quick loading nut (2.1), iron washer (2.2) and rubber gasket (2.3) from the tap.



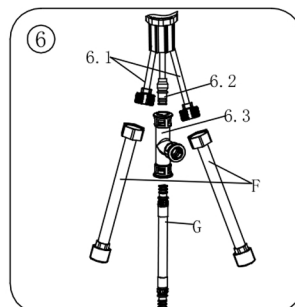
3. If it is a three-hole sink, select the installation panel. Place the bottom plate (C) and panel (B) on the three mounting holes in the sink (3.1). If you install without a panel, skip to step 5.



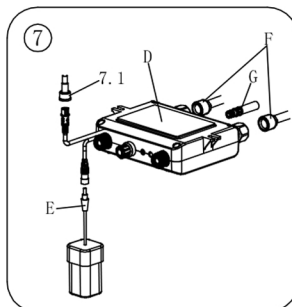
4. Place the tooth tube (4.1) of the faucet through the holes of the panel (C) and panel (B) on the three mounting holes in the sink over the panel.



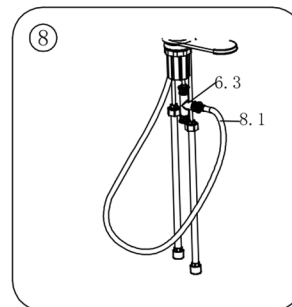
5. Place the tooth tube (4.1) of the tap through the hole of the sink above the sink. Under the sink, install the rubber washer (2.3), iron washer (2.2) and quick nut (2.1) on the tooth tube (4.1), tighten the quick nut (2.1) and fix the faucet on the table.



6. Move the inlet pipe (6.1) slightly from the outlet pipe quick joint (6.2) and be careful not to kink the copper pipe. Push the end of the hose set (G) into the three-connect quick connector (6.3) and the three-connect quick connector (6.3) into the outlet pipe quick connector (6.2). Then spin two hoses (F) into the two ends of the inlet pipe (6.1).

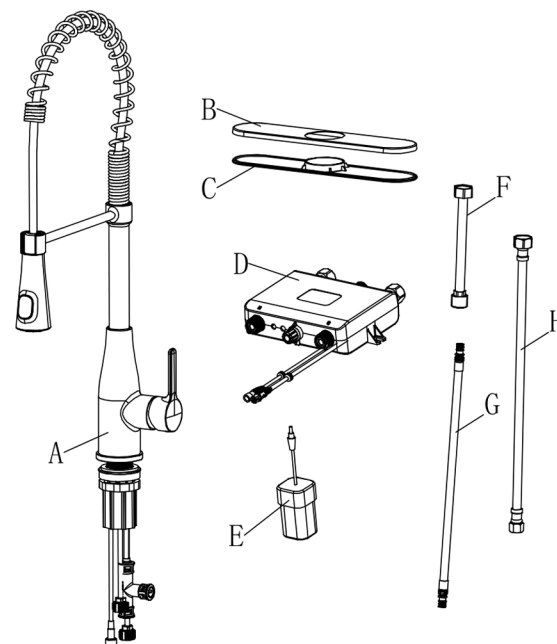


7. Turn the two hoses (F) into the cold side outlet (C marked on the control box (D) of the shell) and the hot side outlet (H marked on the shell). Push the end of the hose set (G) into the fast interface of the control box (D), then connect the battery case (E) to the red outer wiring port of the control box (D), and connect the induction assembly (7.1) to another connection of the control box (D).



8. Push the drawing tube (8.1) into the middle hole of the connecting assembly (6.3).

Inductive Digital Display Kitchen Faucet



Part List

Number	Name	Quantity
A	Faucet	1
B	Panel	1
C	Baseplate	1
D	Control box	1
E	Battery case	1
F	Hose	2
G	Hose group	1
H	Inlet pipe	2