

# Support Article: Chime Box Compatibility

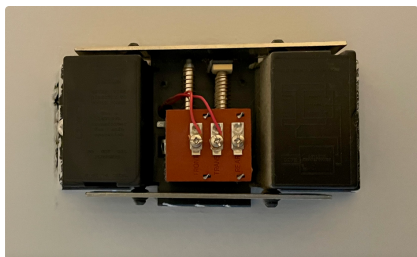
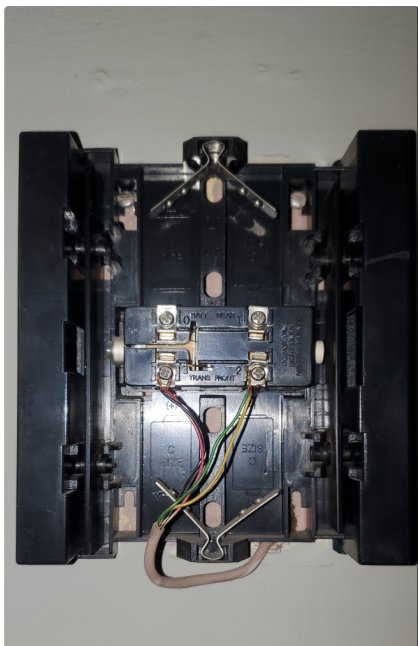
The following document outlines which chimes are compatible with the ecobee Smart Doorbell Camera, and which are not. If you do not find your chime on the list, please take a photo of the chime box (with and without the cover) and contact customer support for further instructions. Our team would be delighted to help you!

Please note: if you have more than one chime box in your home, your system may not be compatible with the ecobee Smart Doorbell Camera. Please see the [Multiple Chimes and Multiple Doorbells](#) document for further instructions, or contact support.

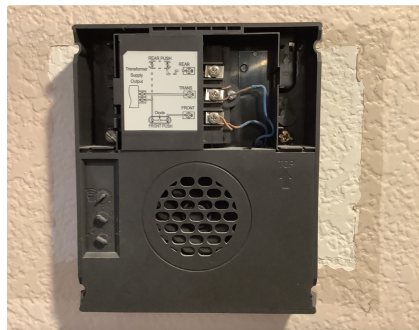
## Chime Types

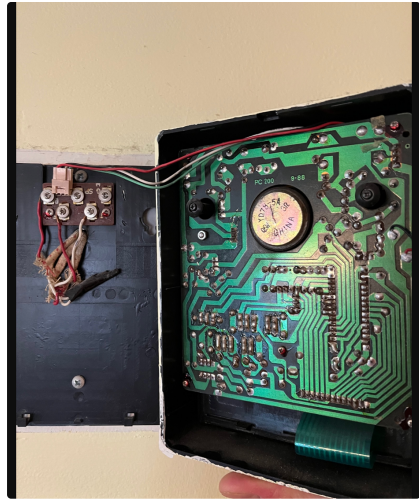
There are 3 types of chimes: Mechanical, Digital, and Wireless.

**Mechanical chimes** use an actuator to strike bells or steel bars to create a chime sound. They often have the traditional “ding-dong” doorbell sound. Some examples are shown below. If your mechanical chime has wires labelled Front (F), Trans (T), and/or Rear (R), the ecobee Smart Doorbell Camera is likely compatible.



**Digital chimes** use a speaker to play a melody. They often play a sound different than the traditional “ding-dong” doorbell sound. They may also contain their own electrical control through a circuit board. Some examples are shown below. If your digital chime is wired into your home, and has wires labelled Front (F), Trans (T), and/or Rear (R), the ecobee Smart Doorbell Camera is likely compatible. If your digital chime is powered by batteries and does not have a wired connection, it is not compatible with the ecobee Smart Doorbell Camera.





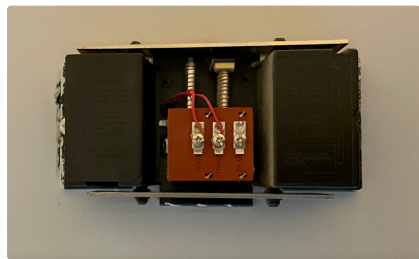
**Wireless chimes** use batteries or plug into a standard outlet, and use radio frequency to communicate between the button and the chime box. Wireless chimes are **not** compatible with the ecobee Smart Doorbell Camera.

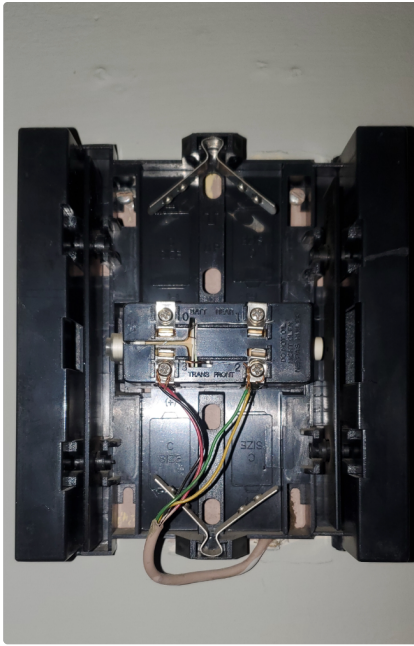


If you are still unsure, contact Customer Support or use ecobee's Find a Pro to help determine if your system is compatible with the ecobee Smart Doorbell Camera.

### Compatible Mechanical Chimes

If your Mechanical chime looks like the photos below, it is likely compatible.





Manufacturer	Model
Adamax	CMH1
Air King / Berns Air King Corp	CK100, CK110, CK2110, CK250, CY-1, SBK200
Amseco	MBL-100
Angelo Brothers Co.	76001, 76003, 76006, 76020, 76034, 76040, 76200, 76205, 76210, 76515
Broan	210, 971, 972, 973, 978, C305RW, C306, RC305RW-A, 950W, C105, C305, CBP972, CBP978, CD-110NB, LA305WL, RC140WH-A, RC210, 720, 70217, D117, D422,
Carlton	CK221RP, DH110, DH120, DH130, DH213, DH252, DH254, DH257, DH213, DH254, DH310, DH315, DH504, DH506, DH509, DH600, DH636
Craftmade	C102X2L, CBB-PR, CH1000-FB, CH1202-DO, CH1405-PT, CH1415-OBG, CH2000-BN, CH5202-DO, CK2001-W
Edwards	C110, C210, C210-W, C211, C211-W, 580, C212, C212W, C212W-2L, C213, C213-W
Electrachime	Contact support for more information
Emerson	C8326, C8204, C8229, C823OR, C8270, C8272, C8355, C8359, C8361, C8365, 8359, 202, C8203, C8577, 663
Fasco	240, 276
GE	CL22
Grothe	Rekord G24075, LTW 1171A
Hampton Bay	CH-2796-02, HB-27102-03, HB2748-03, HB-2749-03
Heath Zenith	95B-B, 32SN, DW-2735-02, SL-2735, SL-2735-02, DW-48, SL-2796, SL-2796-02, LE-96, 615-0090-LE-DXX, WD-1, 907/M, 96/m-B, 99-A, DW-907, 35, 615-0090-TR-CXX, DW-48
Home Depot	216598 (1001 406 918), 216599 (1001 406 920)
Honeywell	RCW100N, RCW101N

Liberty Bell Mutual	Model 56
Nautilus	N950W, NC103
Newhouse Hardware	CHM3D
Nicor	18001, 18002, PRCP2
Nutone	LA59, LA47, C500, LA305WL, LA310CY, LA311WL, LA501CY, LA60, 18002LRD, 18002LRT, BK240LWH, BK242LWH, K16, L34 Heirloom, LA100WH, LA120K, LA120WL, LA202WH, LA126, LA208K, LA208WH, LA164, LA20, LA39, L-42, LA-107, LA-43, 5763, C39854, LB-32, BK105, BK110, BK115, BK120, BK125, BK131, LA139, BK140, BK142, C105, CD130, KA10, KB10, CD131SWH, CD131SN, L12, L14, LA9, LA12, LA13, LA14, LA15, LA109, LA110, LA111, LA114, LA116, LA117, LA119, LA130, LA139, LA140, LA152, LA11BG, LA11WH, LA-107, LA141, LA144, LA148, LA143, LA149, LA30, LA37, KB10, LB-12WW, LB-18, LB-76, LB12, LB13, LB14, LD21, VG130, VG190, LB-14WH, Scovill, LA600WH, NULA 174WH
Nutone Broan	971, 972, 973, 978, C65, C96, C100, C105, C120, C121, C122, C200, C201, C202, C203, C204, C205, C206, C206P, C206WH, C207, C208, C225, C300, C301, C302, C303, C308, C309, C310, C322, C500, C501, CBP103, CD131SWH, 99521100, LA100, LA120, LA202, LA208, LA208, LA501, LA501, LA600, LA11, LA14, LA126, LA130, LA139, LA140, LA301
Quorum	101-1-6, 101-2-6, 102-1-6, 102-2-6
Rittenhouse	550, 552, C8201, C8230, C8538R, C8848, C8847R, Model 410 Sheffield, Traditional Beverly C8536, 382, C8230, Model 220, M9369
Sears Roebuck	746.1446, 746.69460, 746-14600, 746.1476, 746.1496, 1410, 746-14490, 746-14536
Siemens	5WB1500
Snapit	600C, 630C
Style Selections	SS-2735-03, SS-7575, SS-7580, SS-7582, SS-7581-03, SS-7582-03, SS-7584-03
Tamlite Lighting	DB1-2WH, DB3-2WH
Tieber	ICH-1505-BK, CTPW-RG, CH5202
Thomas and Betts	DH120
Trine	Contact support
USI Electric	BCK1-PDWH-2, BKC1-PDWH-1
Utilitech	0568981, UT-27103, UT-2735, UT-2747, 0009736, UT-2796-02, UT-2796-03, UT-2797-03, UT7574, UT7575-02, UT-7577-02, UT-7578-02, UT-7579-02, UT-7580-02

### Incompatible Mechanical Chimes

Manufacturer	Model
Atticus Electronic	Wired Doorbell Deluxe Contractor Kit B077HTD67L
Aubrey	5010
Biticino	E2046BN
DETA	C3500, C3501, C3504

Dimango	DH3XX
Dongguan Smart Hero	3109-HD
Droog	Bottoms Up
Estevez	Saxo D3233
Friedland	York Tubular, D902 Doorbell-in-one
Greenbrook Electrical	Embassy DHT01AN-C
Honeywell	E2609
Legrand	Archer 676264
Maple Chase	60515
Marks Products Co.	Snapit 600C, Snapit 630C
Miami Carey	EC-525-VP, L-110, L-113, 237 Encore
Nutone Broan	BKL340

### Compatible Digital Chimes

Manufacturer	Model
Broan Nutone	C430, LA174WH
Carlson	DH853E, DH840E, DH852E, SS856E
Hampton Bay	HB-7611-02 (1001 407 347), HB-7612-02 (1001 407 776), HB7612-03, HB-7613-02 (1001 407 776), HB-7614-02 (1001 407 811), HB-7615-02 (1001 411 352), HB-7616-02 (1001 407 817), HB-7617-02 (1001 407 818), HB-7618-02 (1001 407 820), HB-7619-02, HB-7620-02, HB-7621-02 (1001 407 821), HB-7621-03, HB-7623-03, HB-7624-03 (1003 008 626), HB-7625-03 (1002 967 182), WL-108, WL-108-A
Heath Zenith	DC-3335, DC-3361, DC-3362, DW-57, 57/M, HE-2219-CH (DS220),(2200/2300 BASE), HE-2215-CH, SL-7560-02, TR-0070-BX, WL-106, WL-106A, WL-106-A, WL-106-B, TR-0081-BX (74 BASE), TR-0081-8X
Home Depot	216590 (1001 406 912)
Honeywell	RCW250N1003, RCW3502N1003/N, RCW3504N1001/N, RCW3506N1009/N, RCW35, RCW3501N, RCW3502N, RCW3506N, Series 3 DW311S, DW313S, DW313xx
iChime	iChime, iChime-1, iChime-2, iChime rev 2
IQ America	DW1401A, DW1402A, DW2403A, DW2404-ACTB, DW3404-ACCB, DW4004-ACBD, DW2405, PC-5610, PC-5870, PC-7420, PC-5810, DW3404-ACCB, PC-5870, DW2840, DW2850, DW2860
KAKADU	All models
Nicor	Contact Customer Support
Nutone	Contact Customer Support

Style Selection	SS-7575, SS-7580, SS-7582, SS-7581-03, SS-7582-03, SS-7584-03, 158345
Trine	All models
Utilitech	All models

### Incompatible Digital Chimes

If your chime box model is listed below, it is not supported by the ecobee Smart Doorbell Camera. Please contact Customer Support for further assistance

Manufacturer	Model
Aiphone	CC-1M, CCS-1A, CH-B, DB-1MD, ChimeCome2
Angelo Brothers Co.	76085
BCS Ideas	YourBell
Biticino	342702, NT4355
Brightwood	BC222
Byron	761, 765, 771, 772, 776, 779, 7760, 24011, BY7061
Dongguan	Smart Hero
DSC Universal	SD 15WULF, PTS 15 BHSW, TS-443S-6UL
Duwl	elektronischer Gong Melodie
Edwards Signaling	6536-G5 Horn Strobe
Elko	RS16
Friedland	E851 Serenade, Musical Chime 282-770 437-418/1, Stockport SK5 6BP, CE861 Orchestra, E2500, D525ST Phonicia, D844 Seattle, D107, 805
Garosa	All models
GE	19208, 19214, 19217, 19303, 19298, 19217, 19238, 19299, 19300, 19208, 19230, 19214, CE851, CL11
Gira	All models
Grothe	CROMA 230, CROMA 231A, CROMA 50, 5G851
Heath Zenith	SL-6182-C, SL-6166-RX-A, SL-6162, SL-7762, 13SE51, TR-0035-RX, TR-0095-RX,DC3330, DC-3338, DC-3344, DC-3360 (3300-RX), LE-6171-B
Heidemann	All models
Intermatic	All models
Kocom	All models
L.O. Bell Inc.	All models
M&S Systems	All models

Moose Alarm System	All models
Musical Doorbell	All models
Telesec	PC-100
ZV2-3 Gong	All models