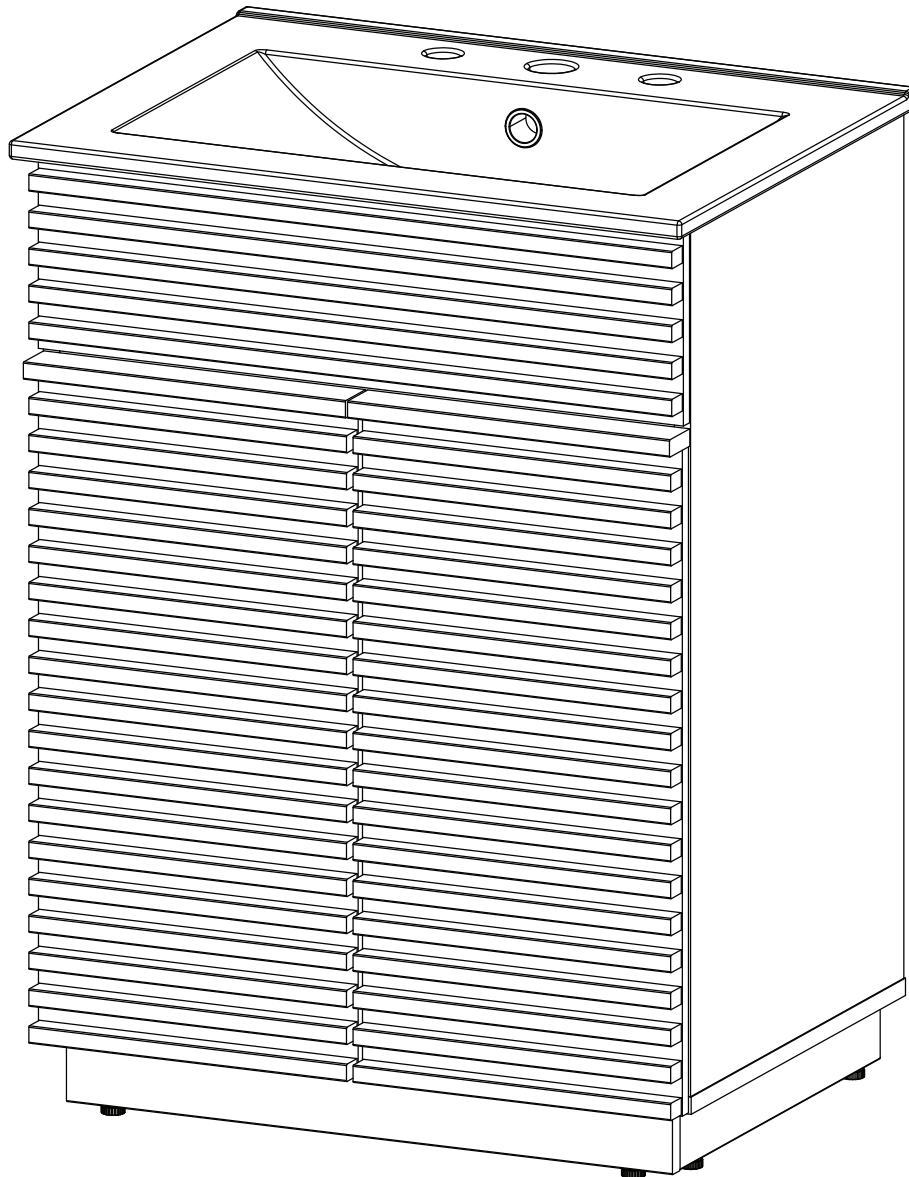


ASSEMBLY INSTRUCTIONS

EEI-6967

V0.02.21.24



Questions? Contact us!

609.256.9000 • cs@modway.com
www.modway.com

*modway

Let's get started!

*modway



Read through all of the instructions before starting



Care instructions are listed in the last step of this manual



Approx. 90 minutes assembly time



Make sure you have all parts and components before discarding any packing materials



2 people recommended for assembly

Only use hand tools to assemble this item. Do not use power tools. Do not tighten bolts or screws completely until all hardware is lined up and inserted into the holes.

Do not over-tighten screws and bolts to avoid stripping the hardware or cracking the item.

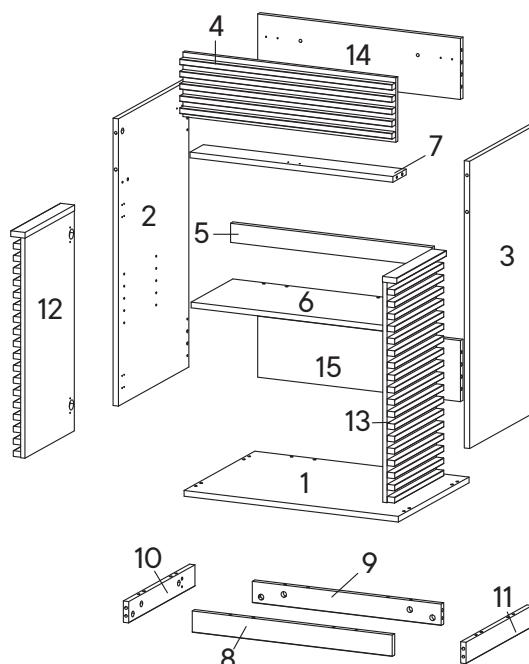
For vanity and plumbing installation, we suggest hiring a professional contractor and plumber.

Assemble your item on a flat, carpeted area, with plenty of space to work. This will prevent damage and scratches to your floors or the item while you're assembling the product.

Keep all components and packaging out of reach of children or animals to avoid risk of choking or suffocation.

Furniture components:

1	Bottom Board	x1	11	Bottom Skirt 4	x1
2	Side Board Left	x1	12	Frame Door Left	x1
3	Side Board Right	x1	13	Frame Door Right	x1
4	Front Skirt	x1	14	Back Board 1	x1
5	Support Board 1	x1	15	Back Board 2	x1
6	Adjustable Shelf	x1			
7	Support Board 2	x1			
8	Bottom Skirt 1	x1			
9	Bottom Skirt 2	x1			
10	Bottom Skirt 3	x1			



Provided hardware:

A		Cam Bolt Ø6 x 35 mm	x22	K		Adjuster	x6
B		Cam Lock Ø15 mm	x24	BC67		Bracket	x2
C		Wood Dowel Ø8 x 30 mm	x32	HS26A		Hinge	x4
D		Screw M 7 x 50 mm	x8	<h2>What you need:</h2> <div> Phillips Head Screwdriver </div>			
E		Allen Key	x2				
F		Cam Bolt Ø6 x 32 mm	x2				
G		Screw M 4.5 x 12.5 mm	x36				
H		Shelf Support	x4				
I		Bracket	x1				
J		Foam/Rubber Pad	x8				

You may also need:

- + Power Drill
- + Level
- + Silicone Adhesive or Caulk
- + Drywall Anchors and Screws
- + Other Wall-Mounting Hardware

Wait!

Missing parts or hardware? Need assistance?
Contact us before returning your item. We're here to help!
609.256.9000 • cs@modway.com

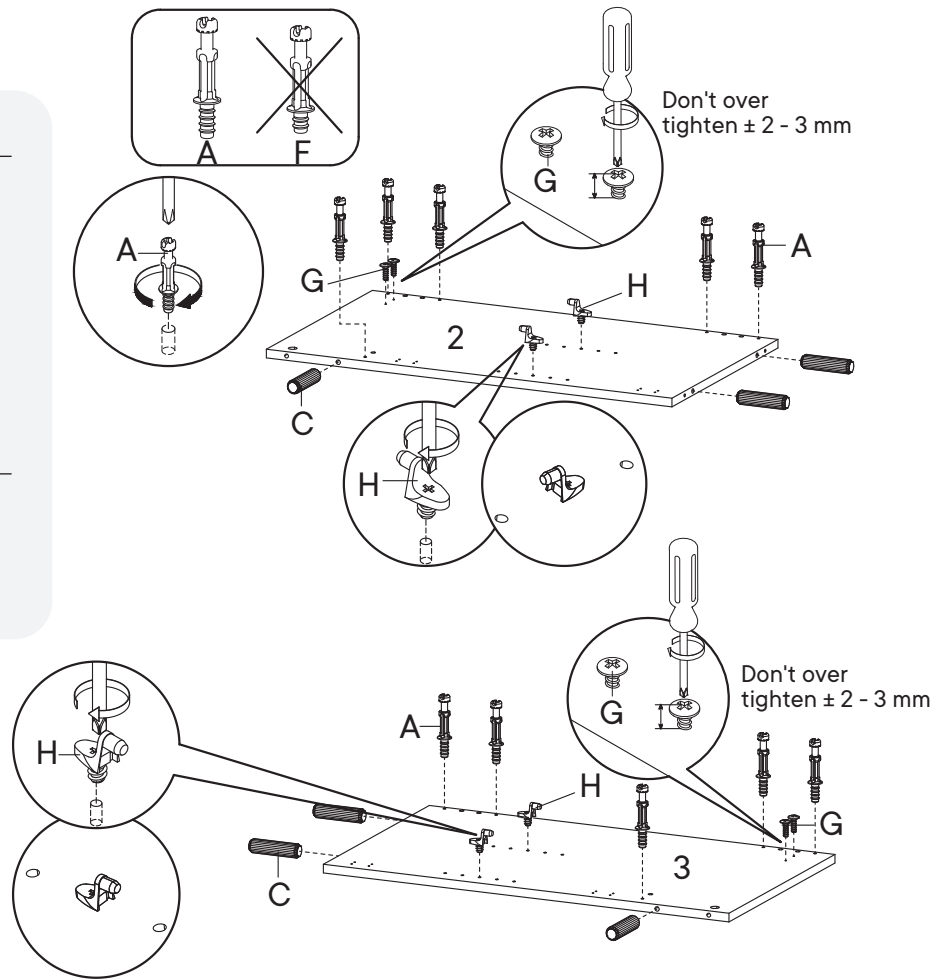
Step 1

HARDWARE

A	Cam Bolt Ø6 x 35 mm	x10
C	Wood Dowel Ø8 x 30 mm	x6
G	Screw M 4.5 x 12.5 mm	x4
H	Shelf Support	x4

COMPONENTS

2	Side Board Left	x1
3	Side Board Right	x1



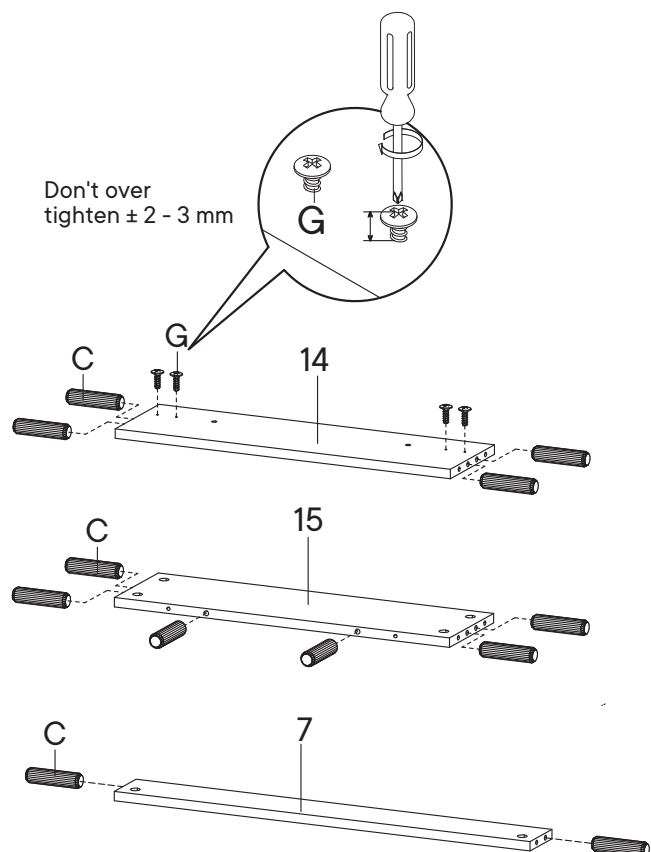
Step 2

HARDWARE

C	Wood Dowel Ø8 x 30 mm	x12
G	Screw M 4.5 x 12.5 mm	x4

COMPONENTS

7	Support Board 2	x1
14	Back Board 1	x1
15	Back Board 2	x1



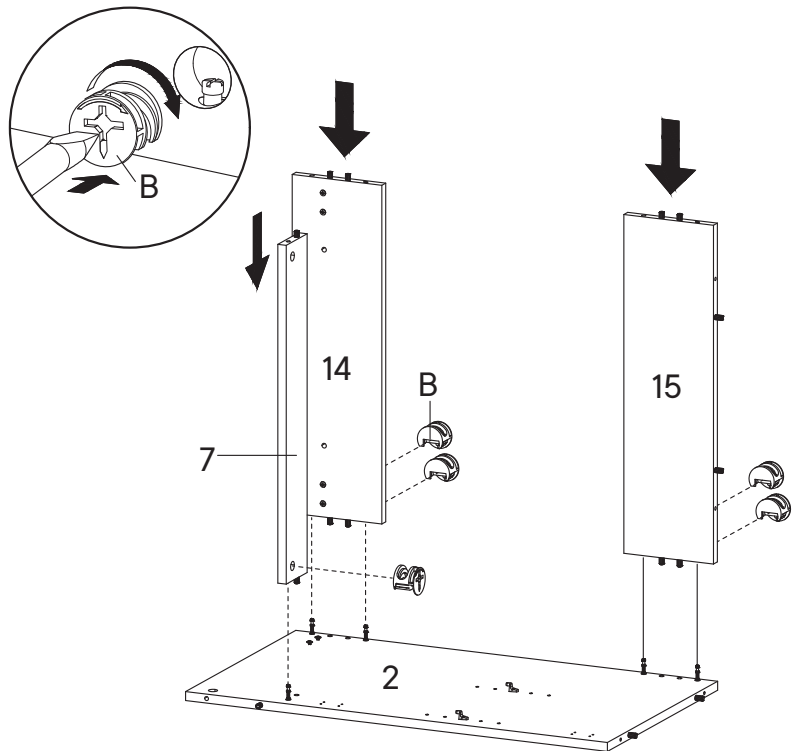
Step 3

HARDWARE

B Cam Lock Ø15 mm x5

COMPONENTS

2 Side Board Left x1
7 Support Board 2 x1
14 Back Board 1 x1
15 Back Board 2 x1



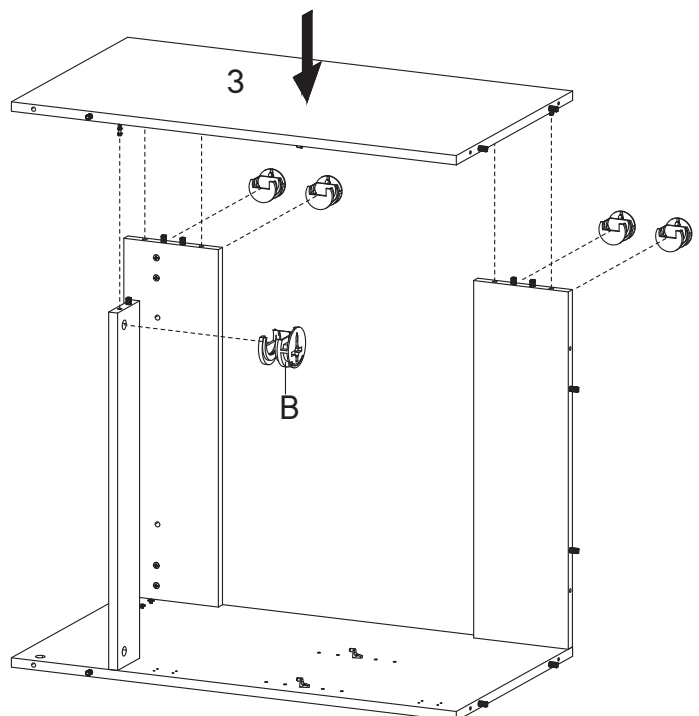
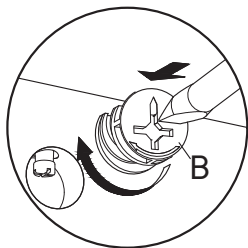
Step 4

HARDWARE

B Cam Lock Ø15 mm x5

COMPONENTS

3 Side Board Right x1



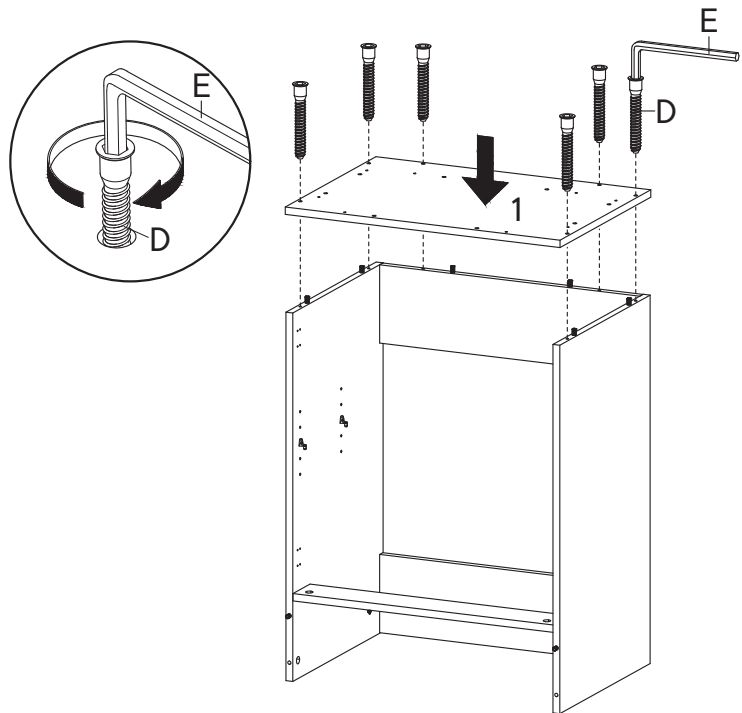
Step 5

HARDWARE

- D** Screw M 7 x 50 mm x6
- E** Allen Key x1

COMPONENTS

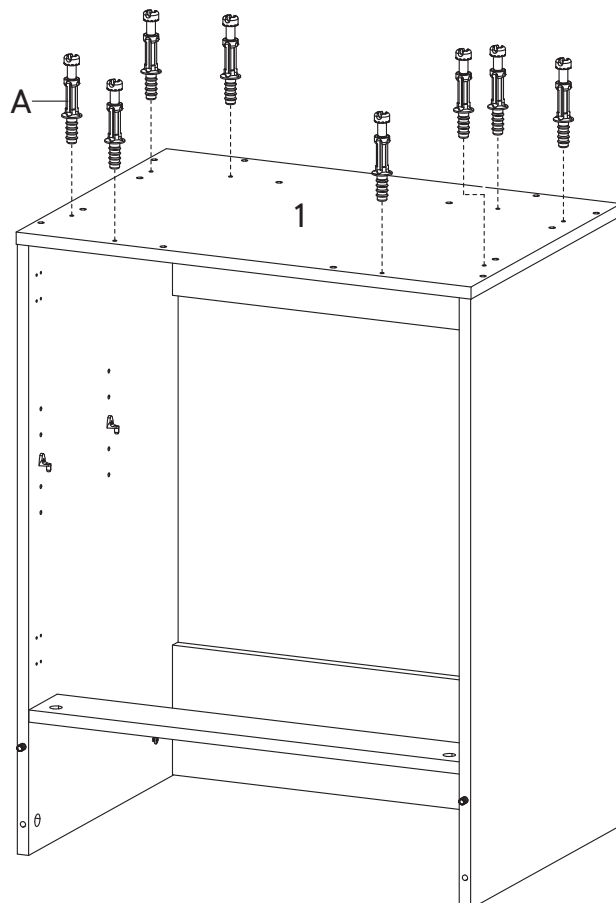
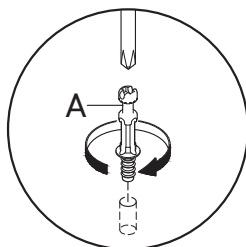
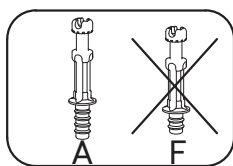
- 1** Bottom Board x1



Step 6

HARDWARE

- A** Cam Bolt Ø6 x 35 mm x8



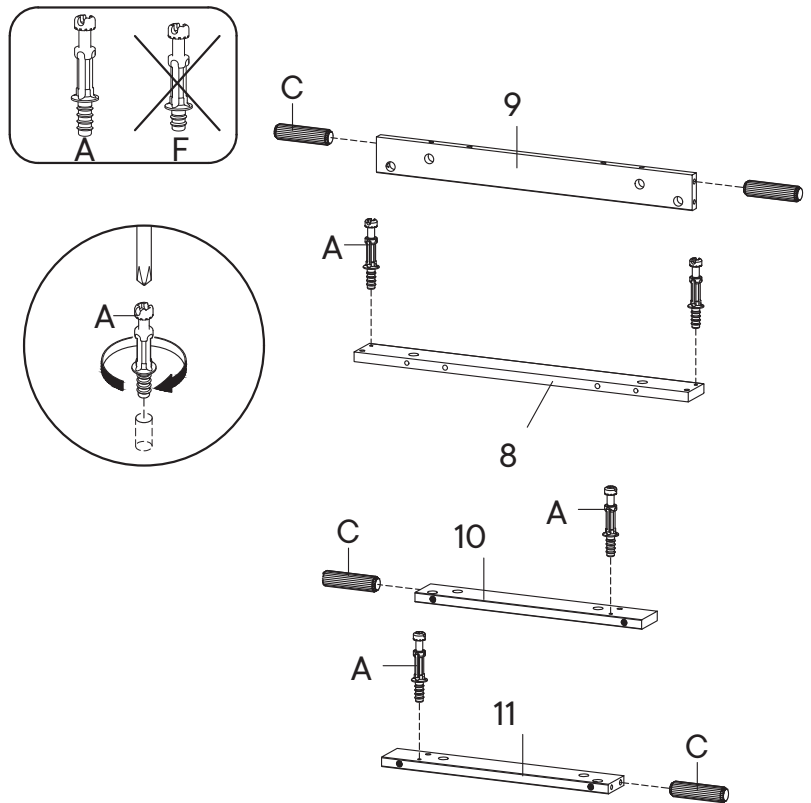
Step 7

HARDWARE

- A** Cam Bolt Ø6 x 35 mm x4
- C** Wood Dowel Ø8 x 30 mm x4

COMPONENTS

- 8** Bottom Skirt 1 x1
- 9** Bottom Skirt 2 x1
- 10** Bottom Skirt 3 x1
- 11** Bottom Skirt 4 x1



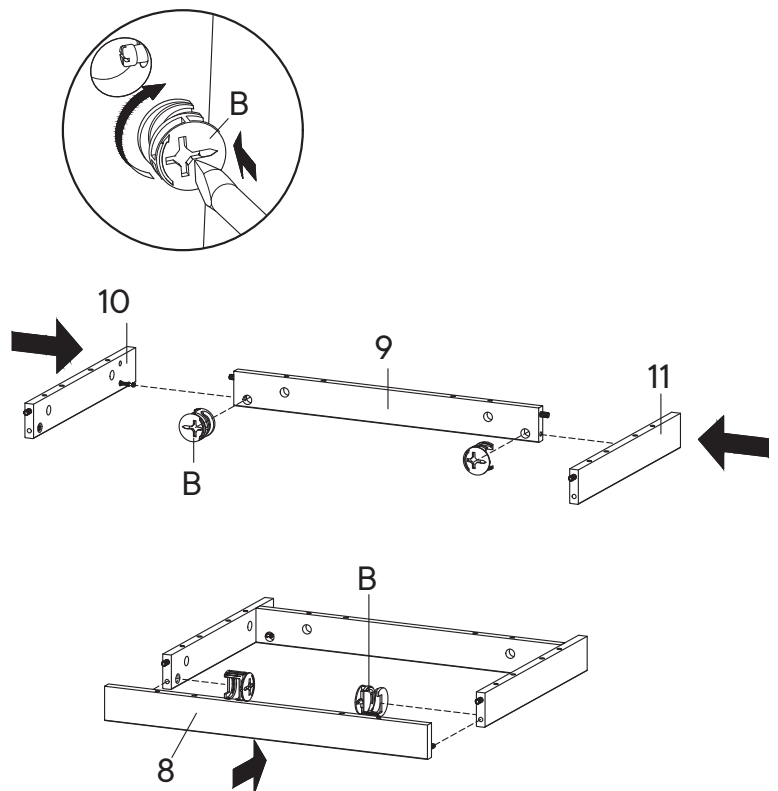
Step 8

HARDWARE

- B** Cam Lock Ø15 mm x4

COMPONENTS

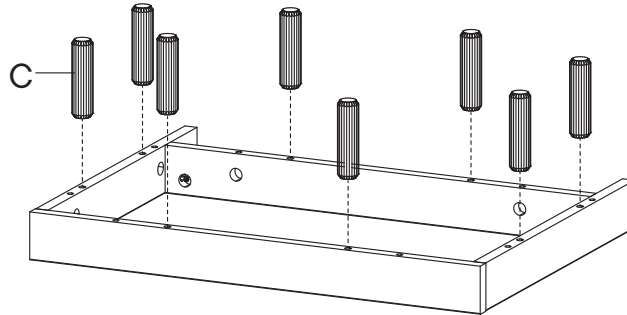
- 8** Bottom Skirt 1 x1
- 9** Bottom Skirt 2 x1
- 10** Bottom Skirt 3 x1
- 11** Bottom Skirt 4 x1



Step 9

HARDWARE

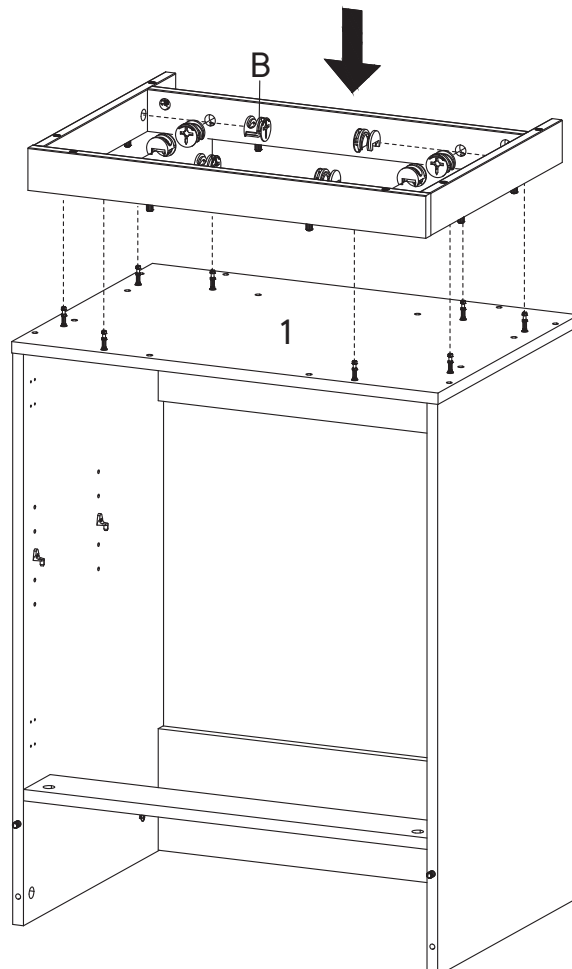
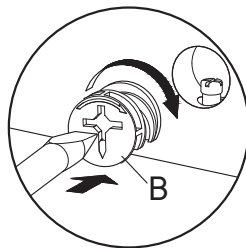
C Wood Dowel Ø8 x 30 mm x8



Step 10

HARDWARE

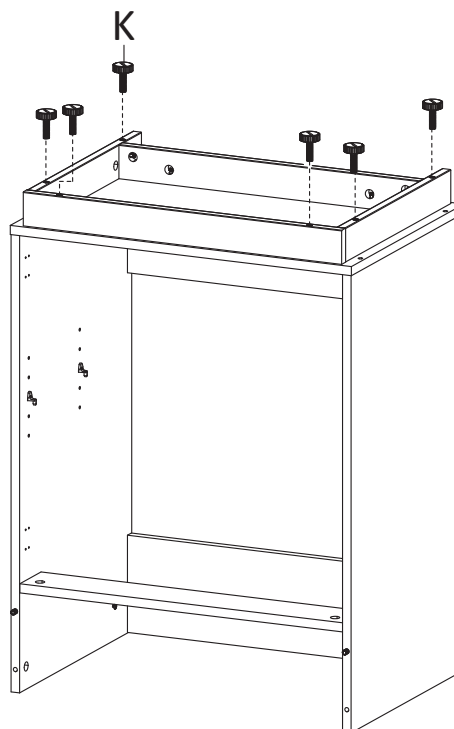
B Cam Lock Ø15 mm x8



Step 11

HARDWARE

- K** Adjuster x6



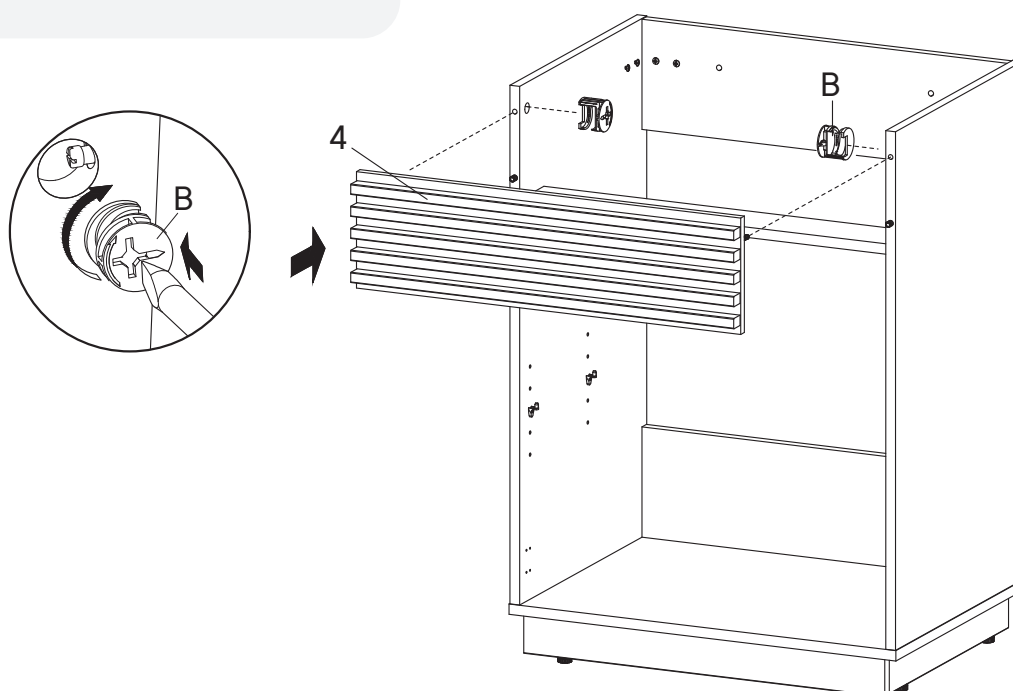
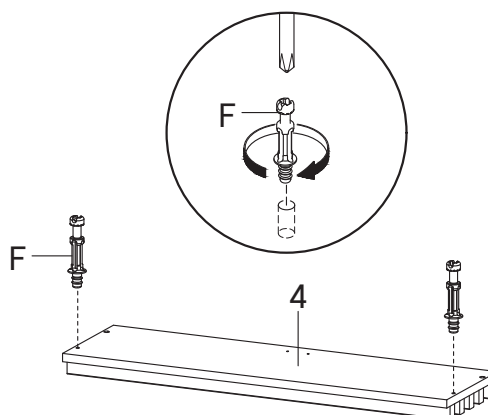
Step 12

HARDWARE

- B** Cam Lock Ø15 mm x2
F Cam Bolt Ø6 x 32 mm x2

COMPONENTS

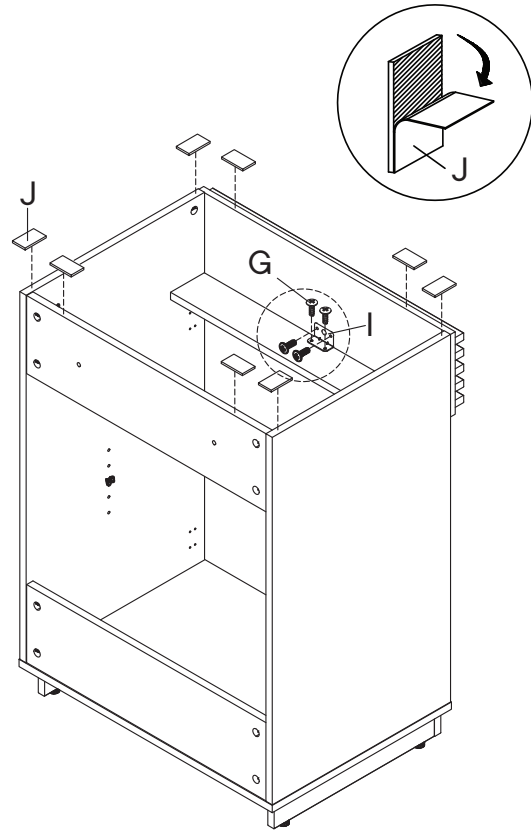
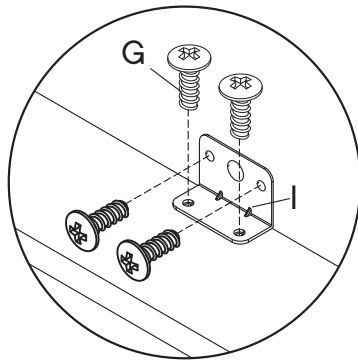
- 4** Front Skirt x1



Step 13

HARDWARE

- G** Screw M 4.5 x 12.5 mm x4
- I** Bracket x1
- J** Foam/Rubber Pad x8



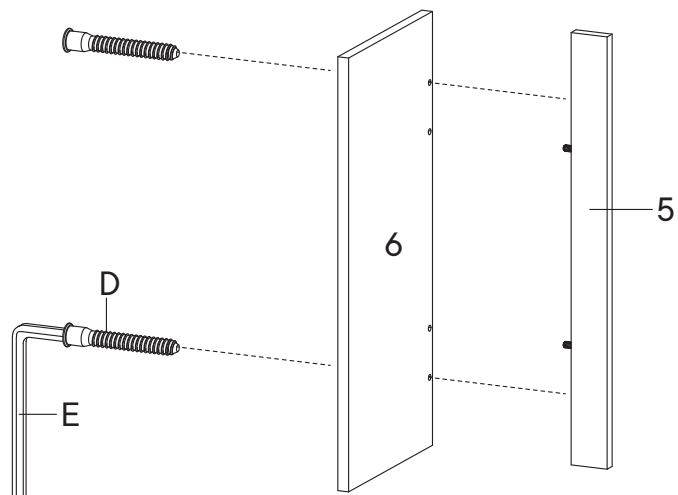
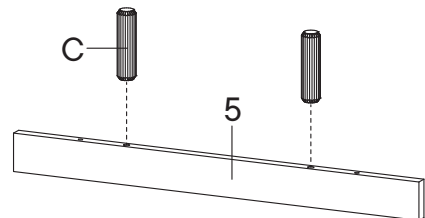
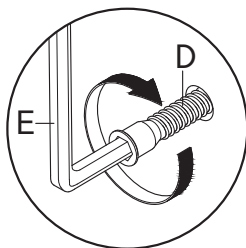
Step 14

HARDWARE

- C** Wood Dowel Ø8 x 30 mm x2
- D** Screw M 7 x 50 mm x2
- E** Allen Key x1

COMPONENTS

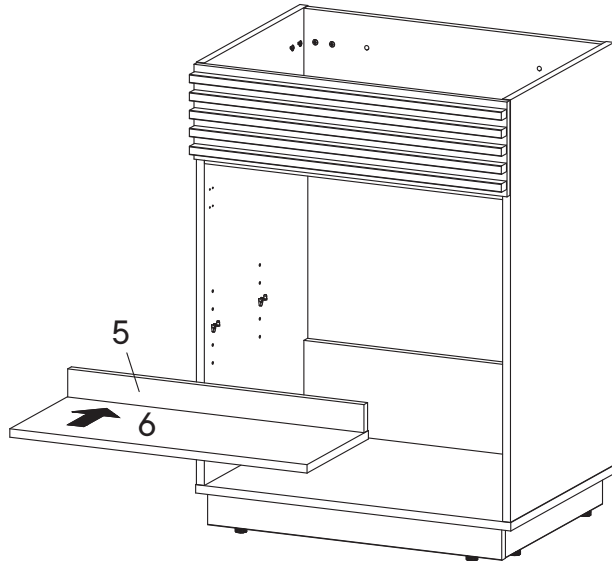
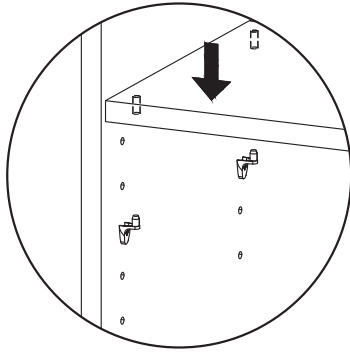
- 5** Support Board 1 x1
- 6** Adjustable Shelf x1



Step 15

COMPONENTS

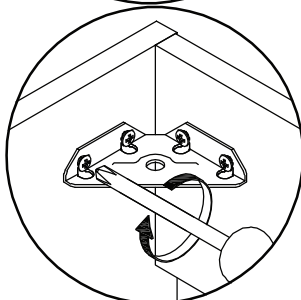
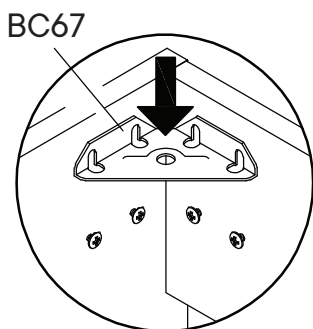
- 5** Support Board 1 x1
- 6** Adjustable Shelf x1



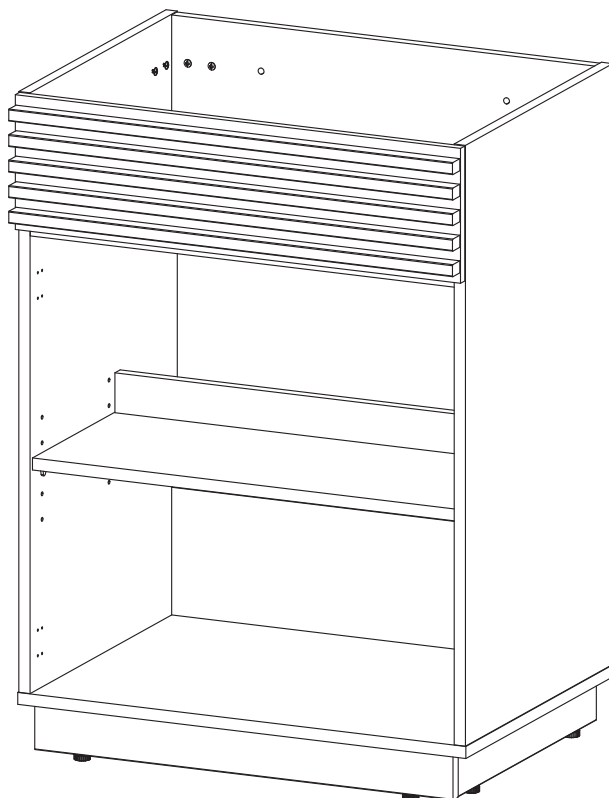
Step 16

HARDWARE

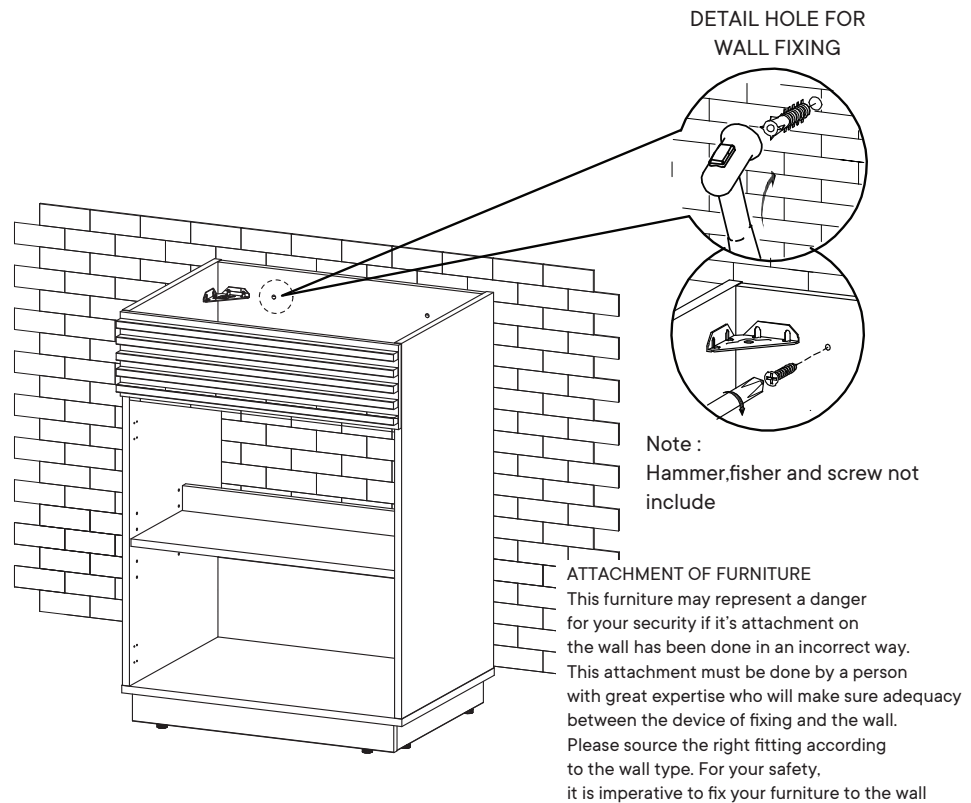
- BC67** Bracket x2



NOTE :
Tighten all the screw

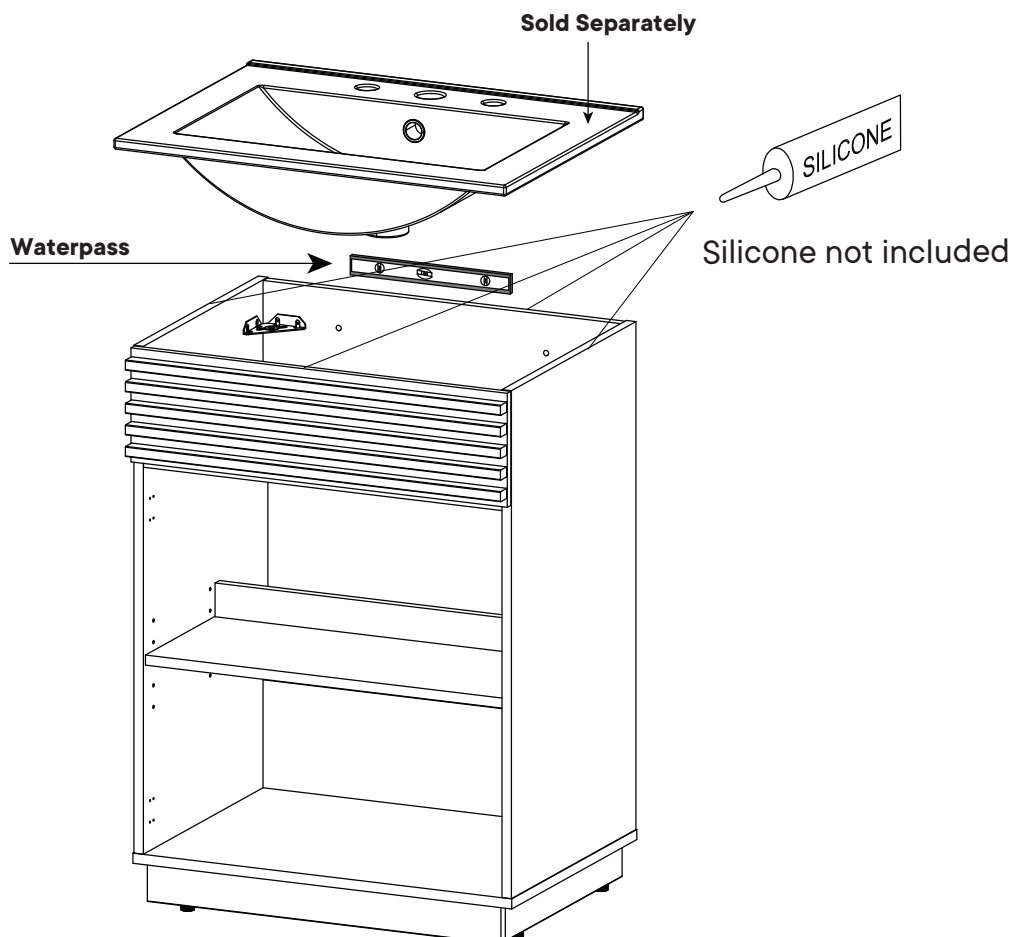


Step 17



Step 18

Apply a thin bead of silicone compound around the vanity base and set the vanity top carefully in place. Remove any excess silicone compound with a wet rag



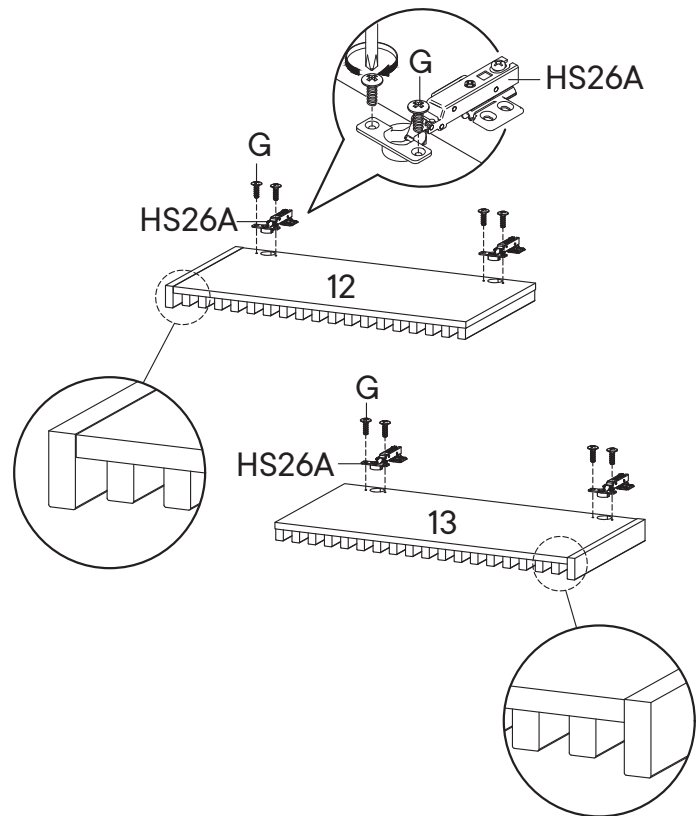
Step 19

HARDWARE

G	Screw M 4.5 x 12.5 mm	x8
HS26A	Hinge	x4

COMPONENTS

12	Frame Door Left	x1
13	Frame Door Right	x1



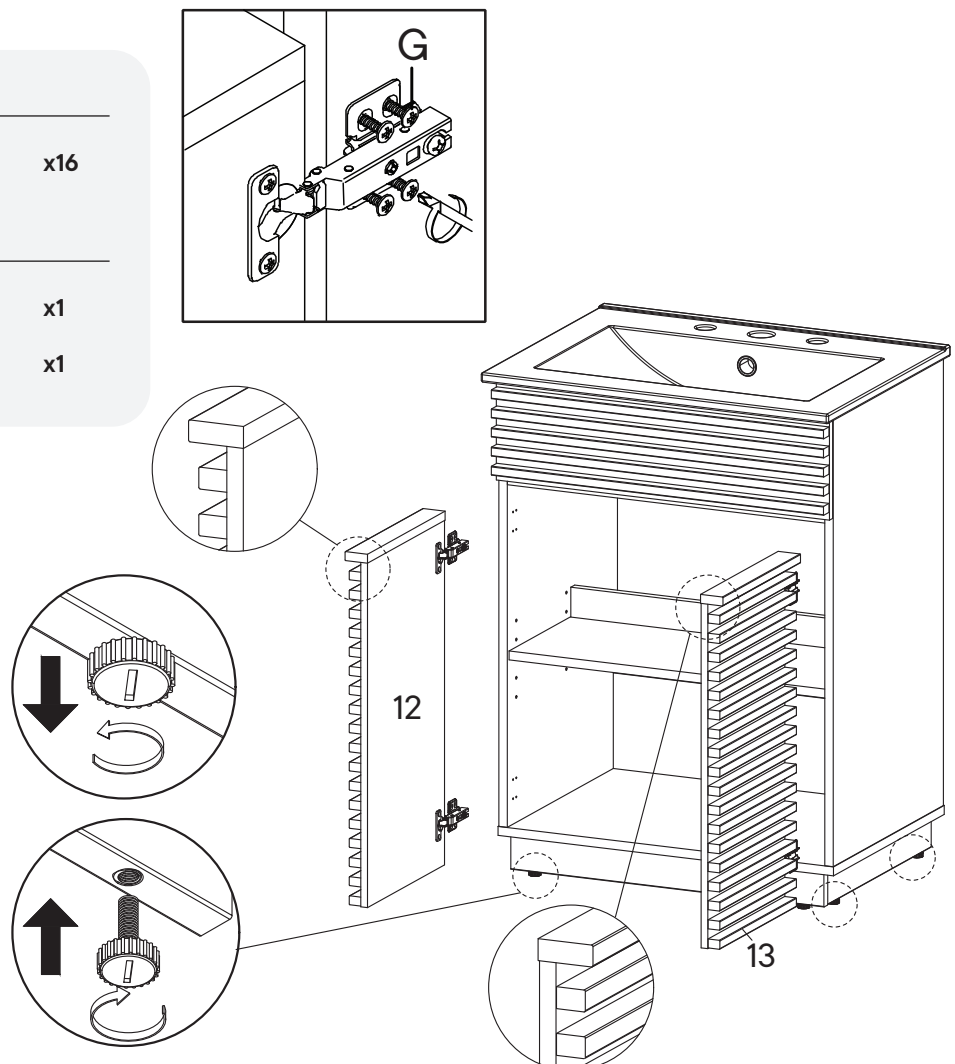
Step 20

HARDWARE

G	Screw M 4.5 x 12.5 mm	x16
----------	-----------------------	-----

COMPONENTS

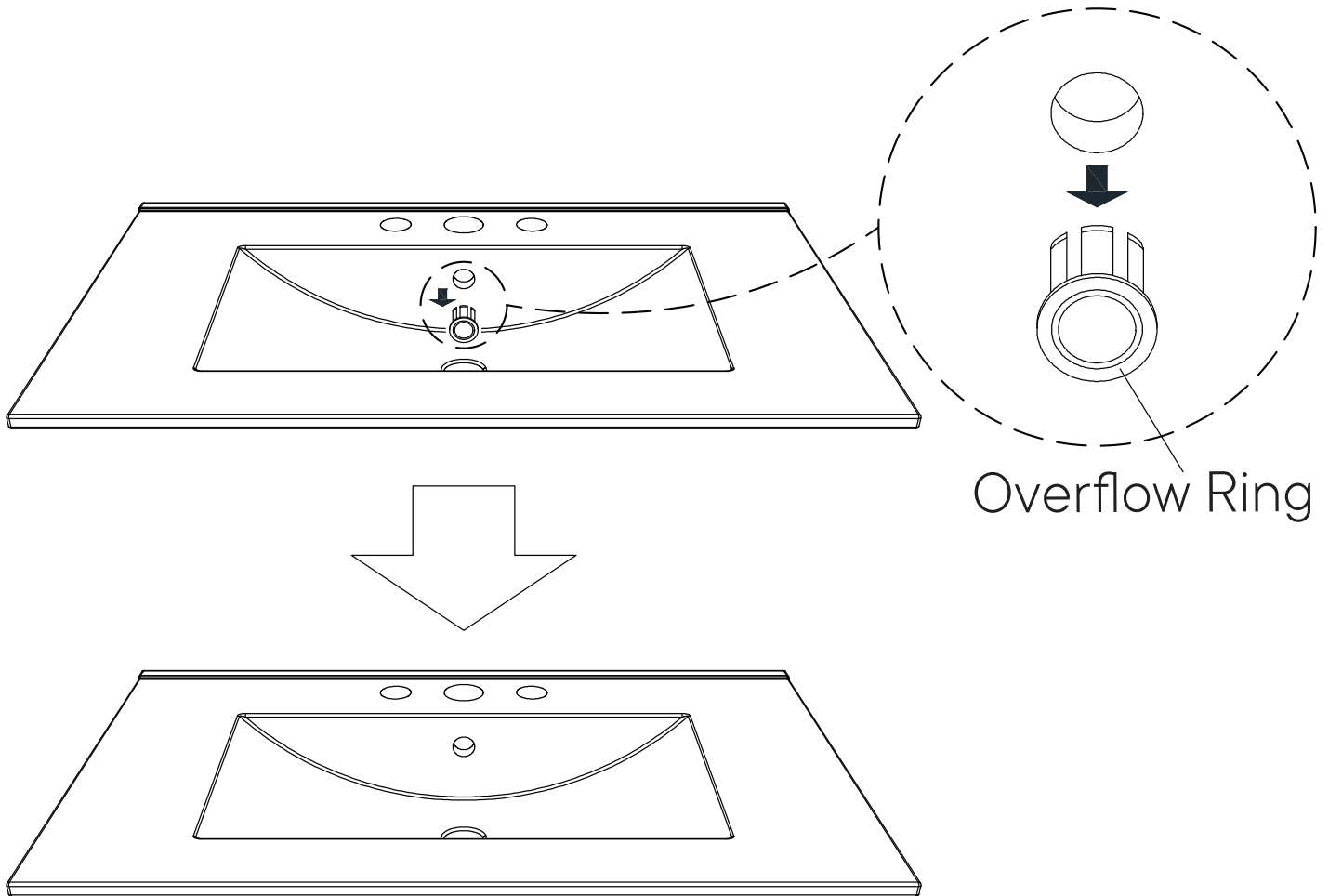
12	Frame Door Left	x1
13	Frame Door Right	x1



A quick note...

*modway

Your sink basin comes complete with a silver overflow ring.
If you'd like to remove this overflow ring, you can do so by hand.



Wait!

Missing parts or hardware? Need assistance?

Contact us before returning your item. We're here to help!

609.256.9000 • cs@modway.com

Great job!

Cabinet assembly is complete.

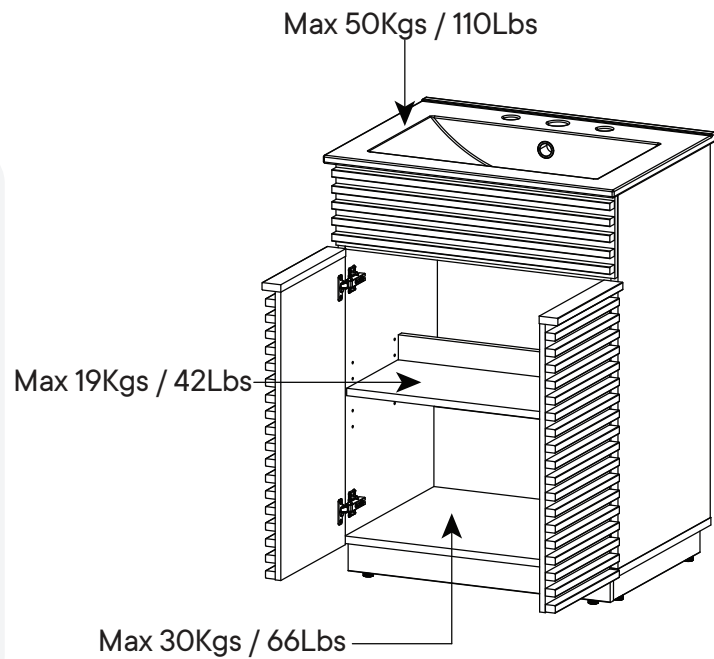
♥ CARING FOR YOUR ITEM

Indoor use only.

Not contract grade.

Clean using a non-abrasive cloth and a mild cleaner.

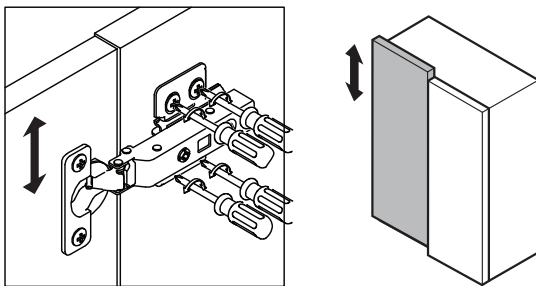
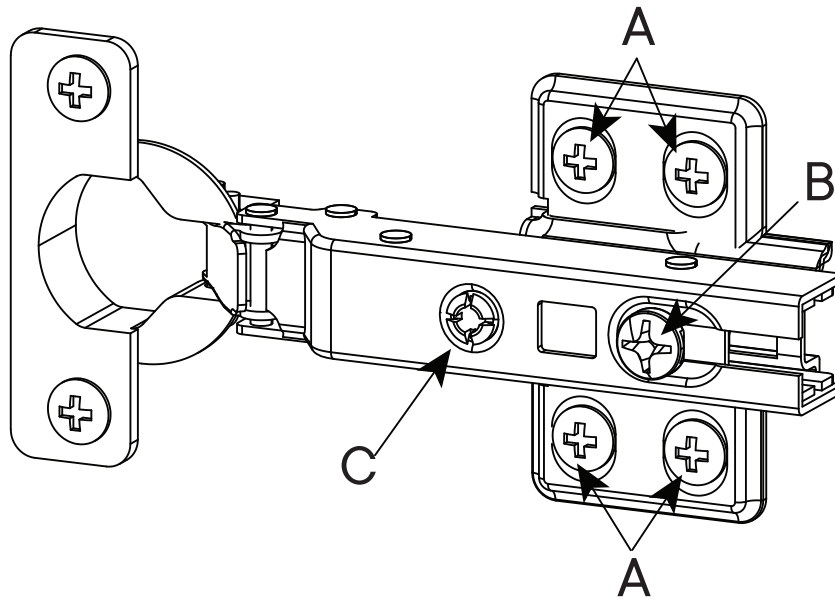
Never use harsh chemicals, as they could damage the finish or integrity of the item.



CONNECT WITH US!

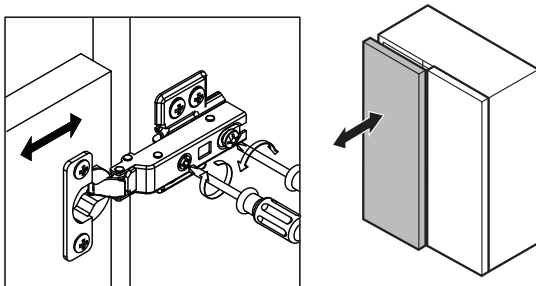
Tag us **@modway_furniture** and **#modway** for a chance to be featured.

Cabinet Door Alignment



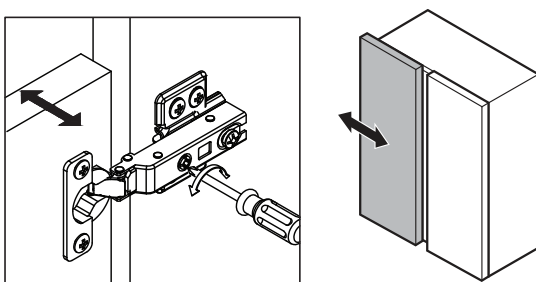
To adjust the vertical height.

Loosen the four screws "A" on both hinges. Two of them are usually in slotted holes which allows you to adjust up or down by few mm. Then tighten back up.



To adjust depth.

Loosen screw "B" and adjust door, if the door can not be adjusted, please loosen screw "C", then try again. Tighten screw "B" and "C".



To adjust side ways.

Turn screw "C" on BOTH hinges on each door.