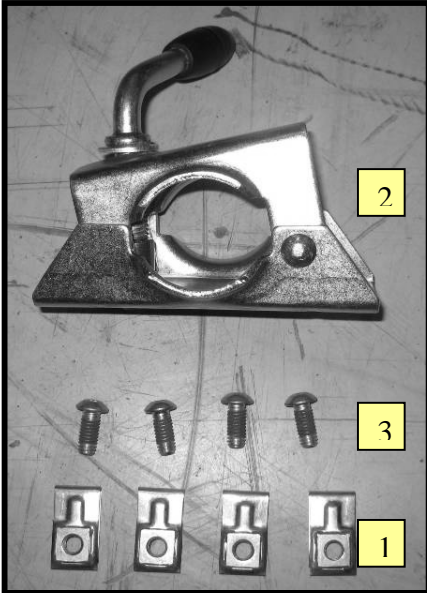
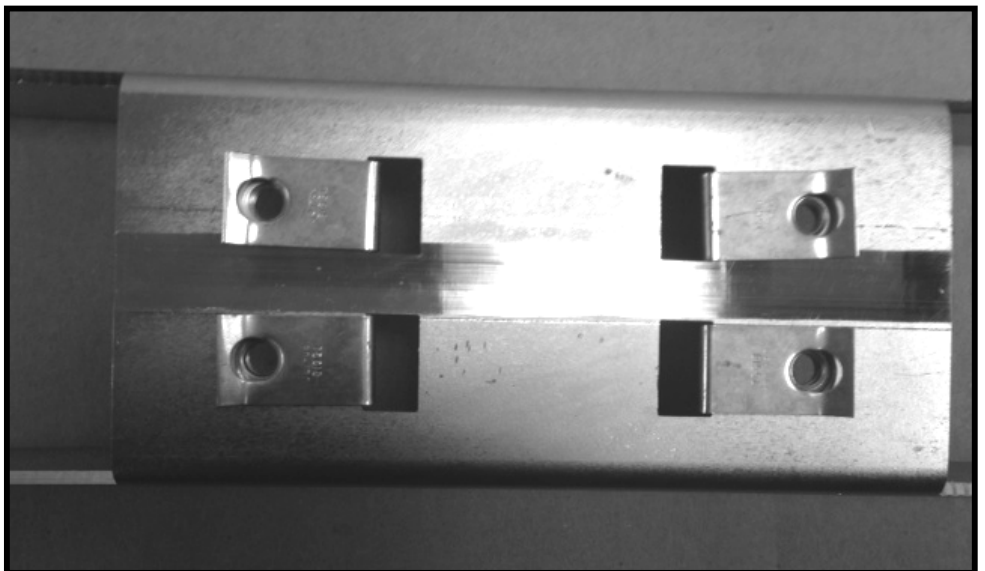


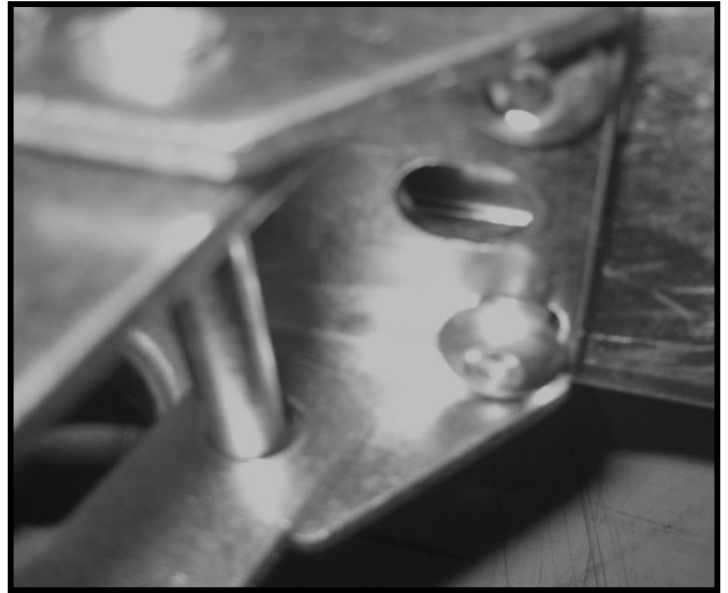
## Tongue Jack Instruction Sheet



Jack mounting bracket and hardware required for tongue jack.



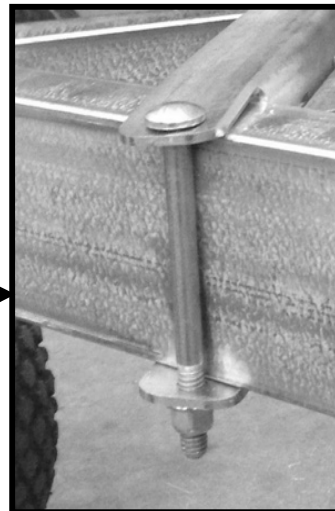
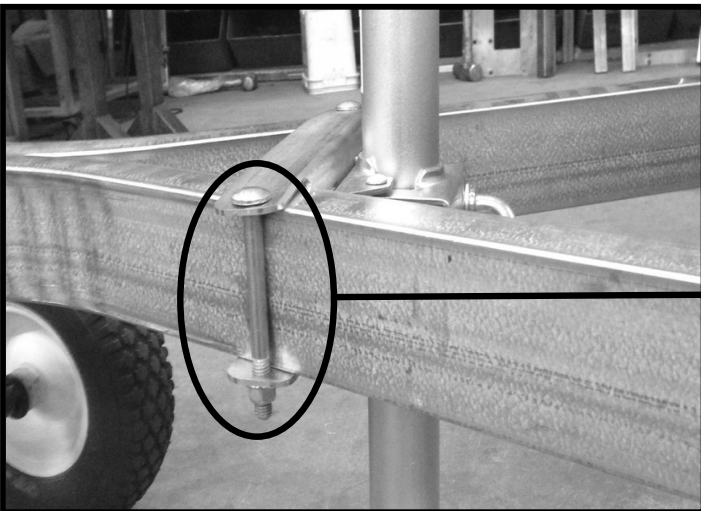
Insert item one (5/16-18 U-type Nut Retainer) into the back of the tongue connection bracket or mounting bracket provided in the kit.



Secure item 2 (tongue jack mounting bracket) with item 3 (5/16 Allen HD Cap Screw) to the tongue connection bracket or mounting bracket



If using the mounting bracket provided; secure the bracket to the two 3/8 carriage bolts and nuts to the tongue.





Secure the jack to item 2 (tongue jack mounting bracket). Turn the tongue jack all the way up prior to driving; remove before going on the highway.



## 4x6 Tongue Jack Instruction Sheet



Jack Mounting Bracket



Mounting Hardware

- Step 1:** Use the jack mounting bracket shown above as a guide, drill 4 – 5/16” holes in the side of the tongue c-channel on the 4x6 trailer.
- Step 2:** Fasten the jack mounting bracket with the mounting hardware shown above to the tongue channel.
- Step 3:** Secure the jack to the jack mounting bracket. Turn the jack all the way up prior to city driving. Remove it before going on the highway.

