

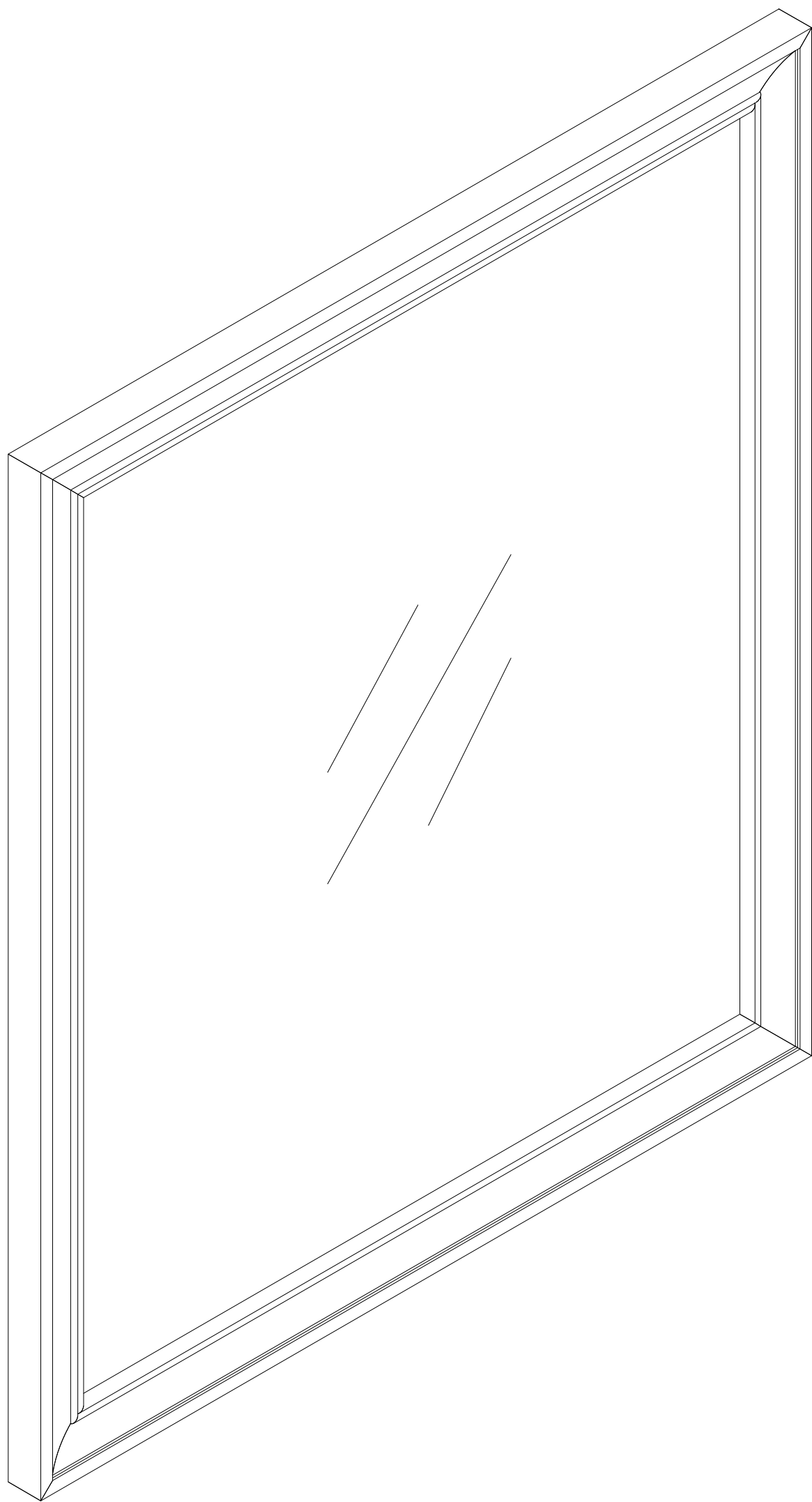
allen + roth.

ALLEN + ROTH and logo design are trademarks or registered trademarks of LF, LLC. All rights reserved.

ITEM #6245680
MODEL #TJ02-07M2630WH

**26 IN YATES
MIRROR IN WHITE**

ATTACH YOUR RECEIPT HERE



Serial Number _____
Purchase Date _____

Thank you for purchasing this ALLEN + ROTH product.
Questions, problems, missing parts?
Before returning, contact us on:
866-439-9800, 8 a.m. - 8 p.m., EST, Monday-Sunday or **ascs@lowes.com**.

TABLE OF CONTENTS

Package Contents.....3

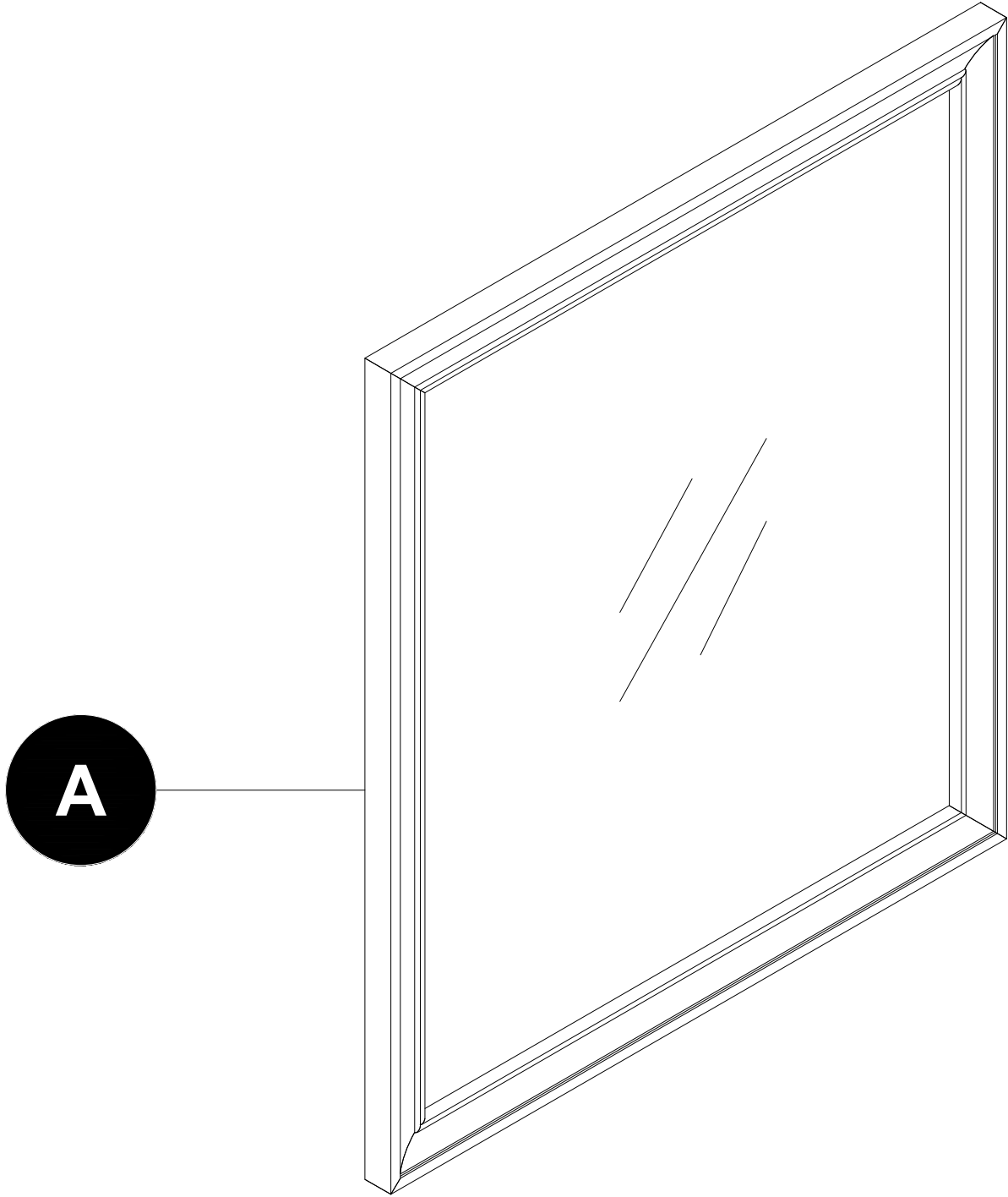
Safety Instruction.....3

Preparation.....4

Assembly Instructions.....4

Replacement Parts List.....7

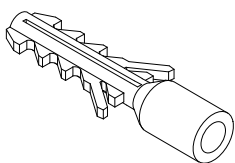
PACKAGE CONTENTS



PART DESCRIPTION		QUANTITY
A	Mirror	1

HARDWARE CONTENTS (not shown actual size)

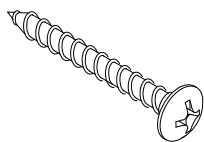
AA



Ø8x39 mm
Anchor

Qty. 2

BB



Ø3.5x51 mm
Screw

Qty. 2



SAFETY INSTRUCTION

Please read and understand this entire manual before attempting to assemble, operate or install the product.

CAUTION

- Follow these instructions closely, take your time, and use care while assembling this vanity.

KEEP THESE INSTRUCTIONS FOR FUTURE REFERENCE.

PREPARATION

Before beginning assembly of product, make sure all parts are present. Compare parts with package contents list and hardware contents list. If any part is missing or damaged, do not attempt to assemble the product.

Estimated Installation Time: 15-20 minutes.

Tools Required for Assembly (not included): Phillips screwdriver, utility knife or scissors, power drill with drill bit.

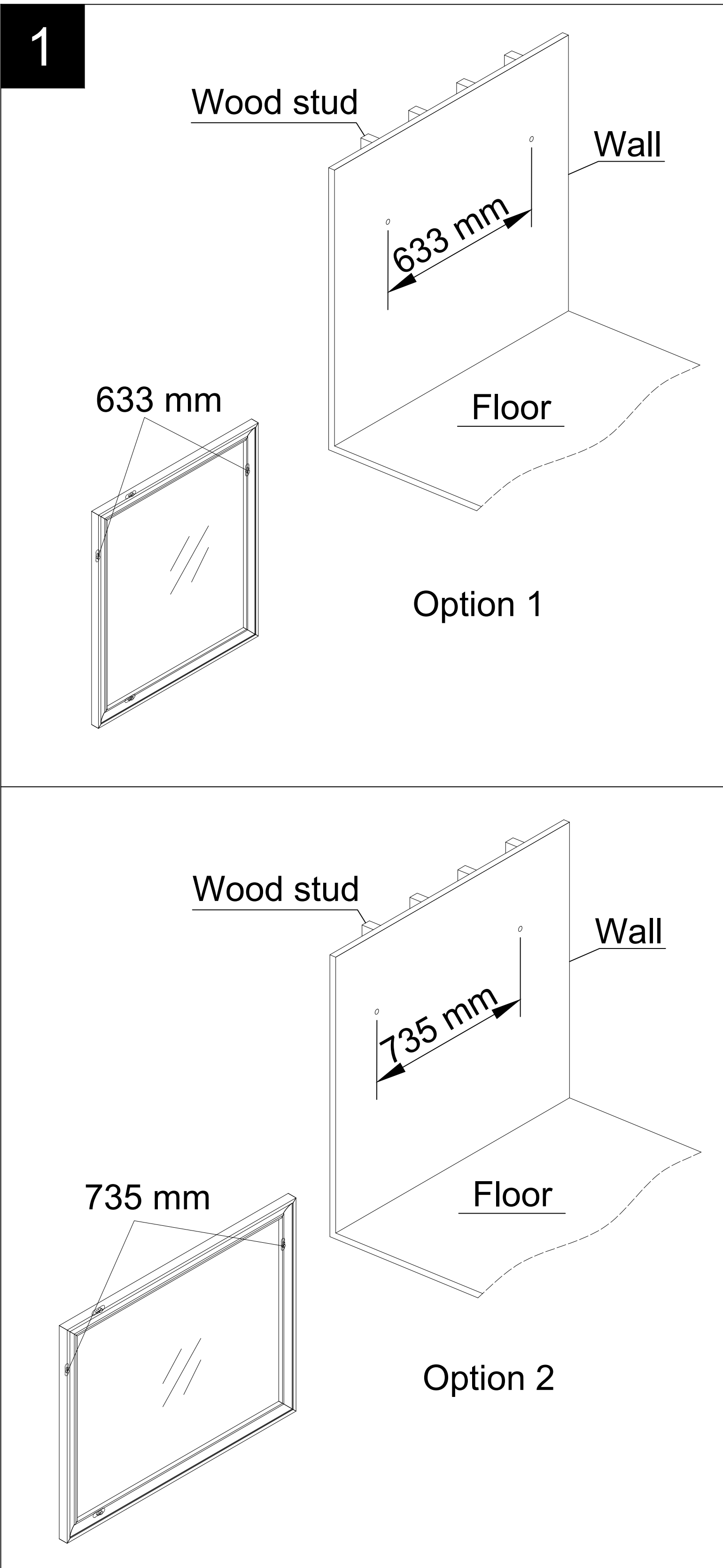
Helpful Tools (not included): Measuring tape, level.

ASSEMBLY INSTRUCTIONS

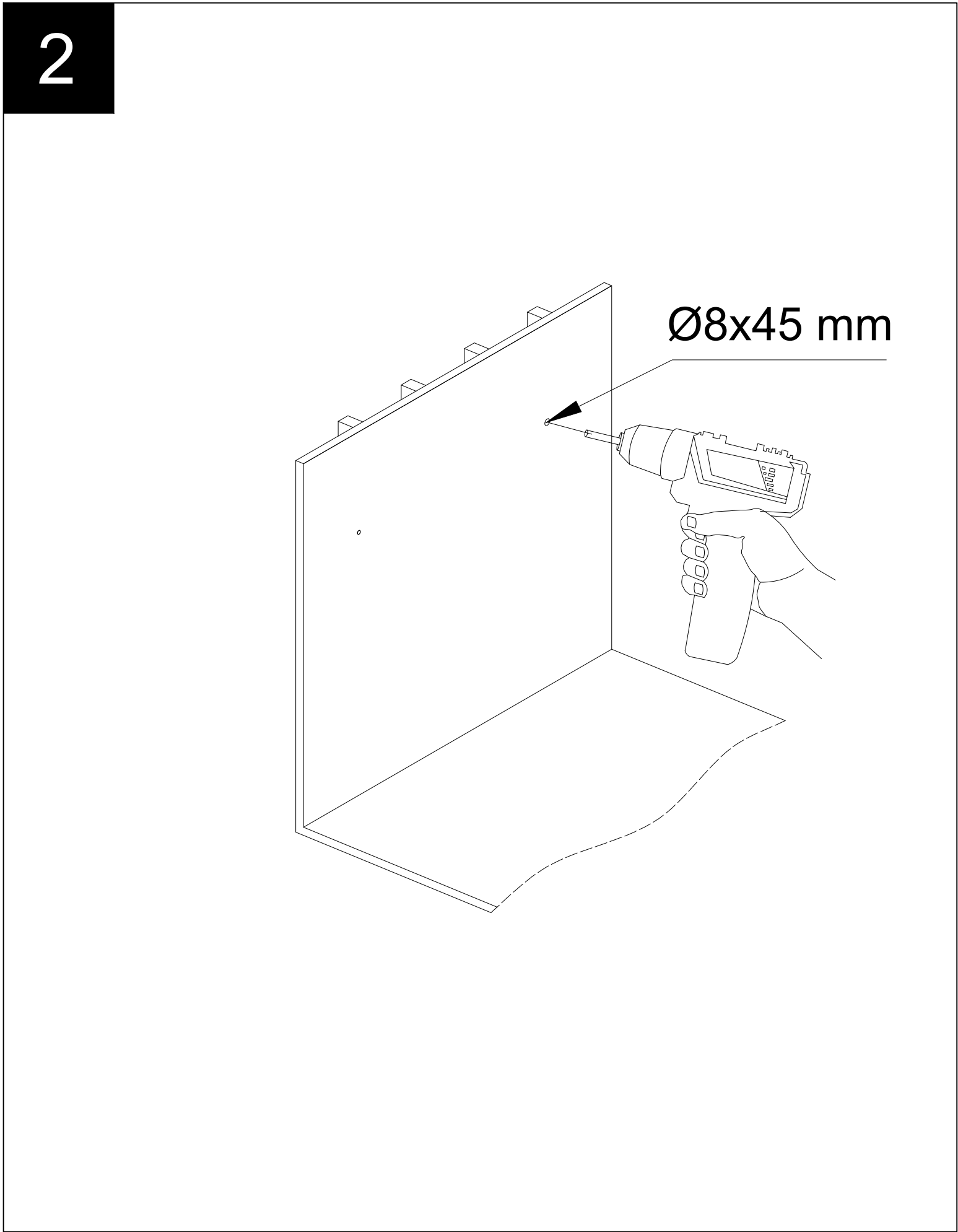
1. Pre-drilling holes for anchors.

- Measure the dimension between the two hangers attached to the mirror.
- Use a pencil to mark the designed installation location on the wall.

Note: Mirror can be hung in 2 directions 633 mm for vertical, 735 mm for horizontal. Hang it in any direction if you like.



2. Pre-drill Ø8x45 mm deep holes for anchors by using a drill.



3. Installing the anchors into the wall.

Hardware Used

AA	Ø8x39 mm	Anchor	x2

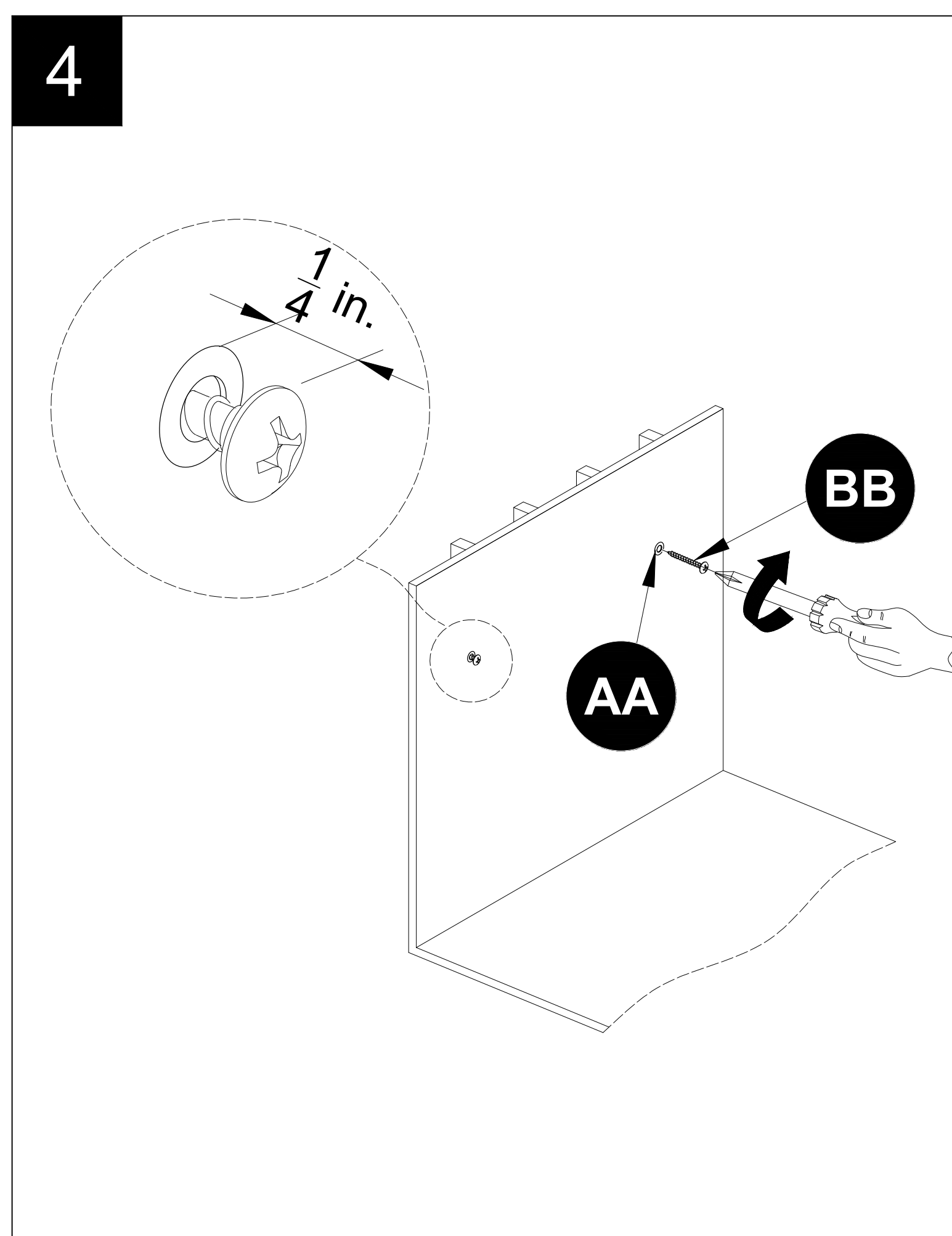
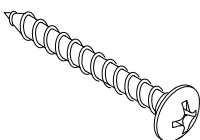


4. Tightening screws onto the wall.

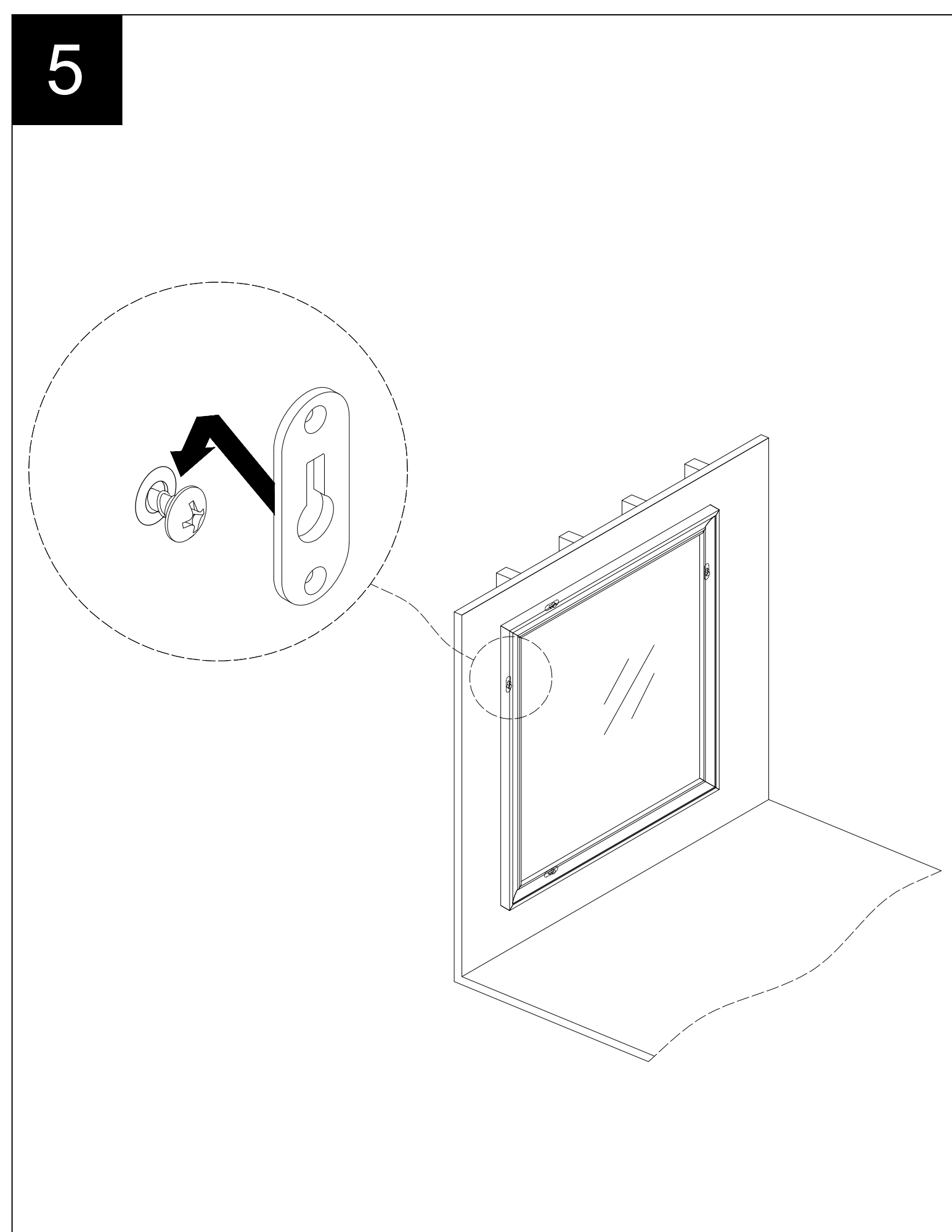
- Insert the two screws (BB) into the anchors (AA).
Leave a 1/4 in. space between the screws (BB) and the wall.

Hardware Used

BB	Ø3.5x51 mm	Screw	x2
-----------	------------	-------	----

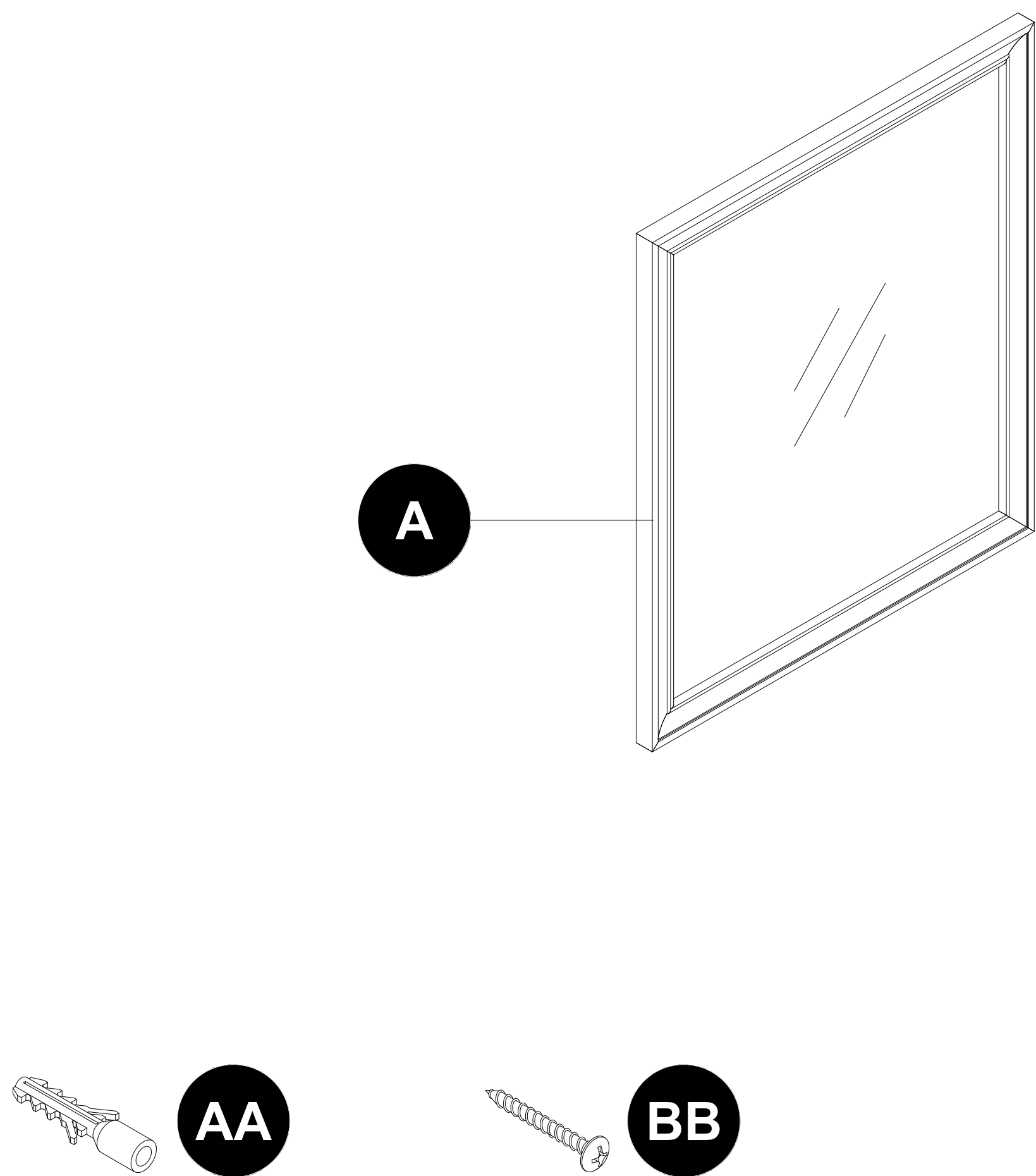


5. Hanging the mirror to the wall.



REPLACEMENT PARTS LIST

For replacement parts, call our customer service department at **866-439-9800**, 8 a.m. - 8 p.m., EST, Monday - Sunday. You may also contact us at **ascs@lowes.com**.



PART	DESCRIPTION	PART#
AA	Anchor	AC-00839020
BB	Screw	SC-83551331