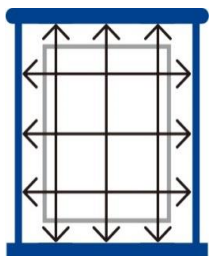


① Measure Your Window and Select Proper Size Shutter



Measure the **INSIDE WIDTH** of the window opening in 3 places: Top, Middle and Bottom. Record the **WIDEST** measurement.

Measure the **INSIDE LENGTH**(HEIGHT) of the window opening in 3 places; Left, Middle and Right. Record the **LONGEST** measurement.

Using the chart below, select the shutter size that best matches your recorded measurements.

② Choose Your Shutter Style/Configuration

**Single Hung**

A single shutter length covers the entire height of the window opening.



**Café**

The height of the shutter is less than the full height of the window opening.



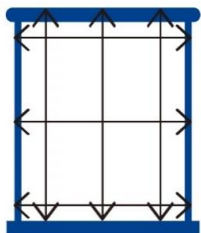
<b>INSIDE MOUNT</b>		<b>Window Opening Width (W) Range</b>					
<b>2 ¼ in. (2.25") Louver Shutter</b>		<b>23" - 25"</b>	<b>27" - 29"</b>	<b>29" - 31"</b>	<b>31" - 33"</b>	<b>35" - 37"</b>	<b>39" - 41"</b>
<b>Window Opening Length (L) Range</b>	<b>22 ½" - 24"</b>	Model# <b>2A232524</b> 23-25"(W) x 24"(L) 2 panels No mid-rail	Model# <b>2A272924</b> 27-29"(W) x 24"(L) 2 panels No mid-rail	Item is not available	Model# <b>2A313324</b> 31-33"(W) x 24"(L) 2 panels No mid-rail	Model# <b>2A353724</b> 35-37"(W) x 24"(L) 2 panels No mid-rail	Item is not available
	<b>34 ½" - 36"</b>	Model# <b>2A232536</b> 23-25"(W) x 36"(L) 2 panels No mid-rail	Model# <b>2A272936</b> 27-29"(W) x 36"(L) 2 panels No mid-rail	Model# <b>2A293136</b> 29-31"(W) x 36"(L) 2 panels No mid-rail	Model# <b>2A313336</b> 31-33"(W) x 36"(L) 2 panels No mid-rail	Model# <b>2A353736</b> 35-37"(W) x 36"(L) 2 panels No mid-rail	Item is not available
	<b>46 ½" - 48"</b>	Item is not available	Item is not available	Item is not available	Model# <b>2A313348</b> 31-33"(W) x 48"(L) 2 panels with mid-rail	Model# <b>2A353748</b> 35-37"(W) x 48"(L) 2 panels with mid-rail	Item is not available
	<b>52 ½" - 54"</b>	Item is not available	Model# <b>2A272954</b> 27-29"(W) x 54"(L) 2 panels with mid-rail	Model# <b>2A293154</b> 29-31"(W) x 54"(L) 2 panels with mid-rail	Model# <b>2A313354</b> 31-33"(W) x 54"(L) 2 panels with mid-rail	Model# <b>2A353754</b> 35-37"(W) x 54"(L) 2 panels with mid-rail	Item is not available
	<b>58 ½" - 60"</b>	Item is not available	Item is not available	Item is not available	Model# <b>2A313360</b> 31-33"(W) x 60"(L) 2 panels with mid-rail	Model# <b>2A353760</b> 35-37"(W) x 60"(L) 2 panels with mid-rail	Model# <b>2A394160</b> 39-41"(W) x 60"(L) 2 panels with mid-rail
	<b>70 ½" - 72"</b>	Item is not available	Item is not available	Item is not available	Item is not available	Model# <b>2A353772</b> 35-37"(W) x 72"(L) 2 panels with mid-rail	Item is not available

**\*NOTE:** At least 1" of flat surface area inside the recess of the window opening is recommended in order to properly secure an inside mount frame.

For flush-mounted reference, the shutter frames and strips thickness are the same as 16mm. (disregard the louver thickness)

Length(Height) measurements related to the adjustments (shorten the shutter). Trim limits are ¼ in.(0.25") on the TOP and 1 ¼ in.(1.25") on the BOTTOM.

① Measure Your Window and Select Proper Size Shutter



Measure the **WIDTH** and **LENGTH(HEIGHT)** from point to point on your molding or wall where the frame will be hung (a minimum of ¾ in. (0.75") **FLAT SPACE** is needed at the point on your molding or wall where the frame will be hung.)

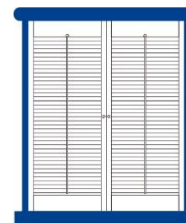
If you have a window sill, measure from the top of the sill to the point on your molding or wall where the frame will be hung.

Using the chart below, select the shutter size that best matches your recorded measurements.

② Choose Your Shutter Style/Configuration

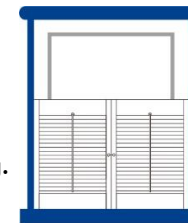
Single Hung

A single shutter length covers the entire height of the window opening.



Café

The height of the shutter is less than the full height of the window opening.



<b>OUTSIDE MOUNT</b>		<b>Window Opening Width (W) Range</b>					
<b>2 ¼ in. (2.25") Louver Shutter</b>		<b>20 ½" - 21"</b>	<b>24 ½" - 25"</b>	<b>26 ½" - 27"</b>	<b>28 ½" - 29"</b>	<b>32 ½" - 33"</b>	<b>36 ½" - 37"</b>
<b>Window Opening Length (L) Range</b>	<b>22 ½" - 24"</b>	Model# <b>2A232524</b> 23-25"(W) x 24"(L) 2 panels No mid-rail	Model# <b>2A272924</b> 27-29"(W) x 24"(L) 2 panels No mid-rail	Item is not available	Model# <b>2A313324</b> 31-33"(W) x 24"(L) 2 panels No mid-rail	Model# <b>2A353724</b> 35-37"(W) x 24"(L) 2 panels No mid-rail	Item is not available
	<b>34 ½" - 36"</b>	Model# <b>2A232536</b> 23-25"(W) x 36"(L) 2 panels No mid-rail	Model# <b>2A272936</b> 27-29"(W) x 36"(L) 2 panels No mid-rail	Model# <b>2A293136</b> 29-31"(W) x 36"(L) 2 panels No mid-rail	Model# <b>2A313336</b> 31-33"(W) x 36"(L) 2 panels No mid-rail	Model# <b>2A353736</b> 35-37"(W) x 36"(L) 2 panels No mid-rail	Item is not available
	<b>46 ½" - 48"</b>	Item is not available	Item is not available	Item is not available	Model# <b>2A313348</b> 31-33"(W) x 48"(L) 2 panels with mid-rail	Model# <b>2A353748</b> 35-37"(W) x 48"(L) 2 panels with mid-rail	Item is not available
	<b>52 ½" - 54"</b>	Item is not available	Model# <b>2A272954</b> 27-29"(W) x 54"(L) 2 panels with mid-rail	Model# <b>2A293154</b> 29-31"(W) x 54"(L) 2 panels with mid-rail	Model# <b>2A313354</b> 31-33"(W) x 54"(L) 2 panels with mid-rail	Model# <b>2A353754</b> 35-37"(W) x 54"(L) 2 panels with mid-rail	Item is not available
	<b>58 ½" - 60"</b>	Item is not available	Item is not available	Item is not available	Model# <b>2A313360</b> 31-33"(W) x 60"(L) 2 panels with mid-rail	Model# <b>2A353760</b> 35-37"(W) x 60"(L) 2 panels with mid-rail	Model# <b>2A394160</b> 39-41"(W) x 60"(L) 2 panels with mid-rail
	<b>70 ½" - 72"</b>	Item is not available	Item is not available	Item is not available	Item is not available	Model# <b>2A353772</b> 35-37"(W) x 72"(L) 2 panels with mid-rail	Item is not available

\*NOTE: 1" flat space on the wall or window frame is recommended in order to properly secure the shutter. Above width ranges are based on the suggestion.

For other outside-mounted reference, each hanging strip is ¼ inch wide, each stile (shutter panel left/right side frame) is ¾ inch wide.

When install an shutter onto a smaller window opening than suggested, the overlap of the window would cause the shutter louvers not operate.

Length(Height) measurements related to the adjustments (shorten the shutter). Trim limits are ¼ in.(0.25") on the TOP and 1 ¼ in.(1.25") on the BOTTOM.