

BRASS SWING CHECK VALVE



The Right Choice...

TECHNICAL DATA

DESCRIPTION:

Brass Swing Check Valve

CONSTRUCTION:

- Straight pattern
- 125 PSI Max Pressure
- 248°F Max Working Temperature
- Brass Body

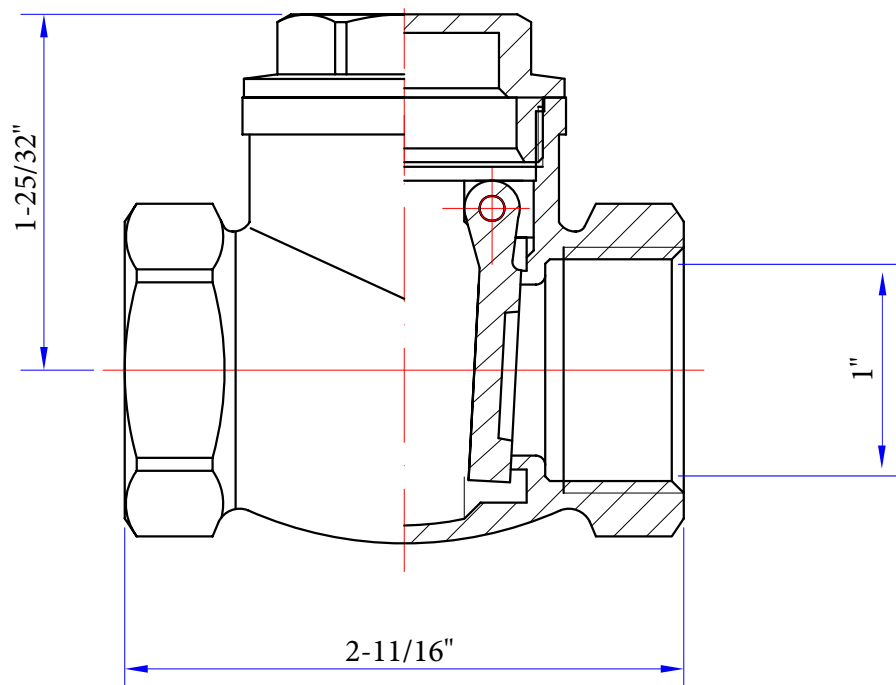
FINISH:

Rough brass

COUNTRY OF ORIGIN: China

<u>PART#</u>	<u>DESCRIPTION</u>	<u>SIZE</u>
20425LF	200WOG	1" IPS

ROUGH IN DRAWING



ALL DIMENSIONS SHOWN ARE NOMINAL