

the radiant[®] collection

Smart Switch, Wi-Fi



before you start

Review this guide in its entirety. Consult an electrician with any questions or if you are unsure of your abilities.

Warning: Incorrect installation could result in death, serious injury, and/or damage to your home or devices.

Caution: To reduce the risk of injury and/or overheating and damage to other equipment:

- For dry, indoor use only.
- Do not use to power medical equipment.
- Not suitable as a disconnecting means.
- Do not use with loads exceeding the device load rating (see page 16).
- Connect the smart switch to a 120 VAC, 60 Hz power source ONLY.
- Always use copper wire to install the smart switch and follow all applicable local and national electrical codes.

Visit www.legrand.us/radiant/smart-lighting/support for support.

what you need

REQUIRED:

- ⊕ Phillips-head screwdriver
- ⊖ Flat blade screwdriver

YOU MAY ALSO NEED:

Voltage tester, pliers, wire cutter, wire stripper, electrical tape, flashlight, wiring leads (included), and wire nuts (included)

SCAN TO WATCH THE
INSTALLATION VIDEO

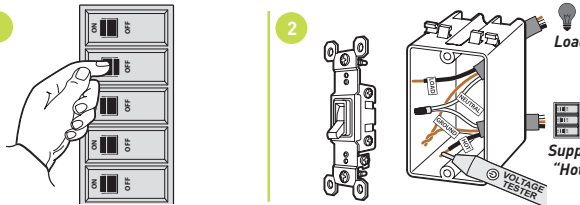


installation & setup

1 | turn off power to device at circuit breaker

Flip existing light switch multiple times to confirm power is off.

NOTE: Ensure power is off to all devices in electrical box.



2 | remove existing device

Check for the following wires:

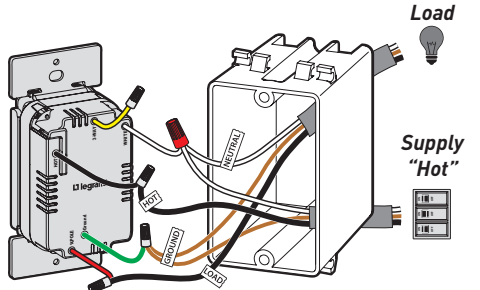
- a HOT or LINE: Receives power from the circuit box. Referred to as “hot” for the purposes of this guide. Do not touch or let “hot” wires contact other wires.
- b LOAD: Directs power to your light(s).
- c NEUTRAL: Creates a path to return current to the power source when the device is off. Required for your switch installation.
- d GROUND: Provides a safe path for electricity in the event of a short circuit.
- e TRAVELER: If more than one switch controls the light, an additional wire will be in the box that “travels” to the other switch.

3a | wire smart switch

Use the wire nuts provided to secure the wires together.

- a Connect the WHITE neutral wire on the switch to the neutral wires in the box, using the red wire nut.
- b Connect the LOAD wire on the switch to the load wire in the box.
- c Connect the HOT wire on the switch to the hot wire(s) in the box.
- d Connect the GREEN ground wire on the switch to the ground wire(s) in the box.
- e If the light is controlled with only one switch, use a wire nut to cap the YELLOW traveler wire on the device and proceed to step 4.

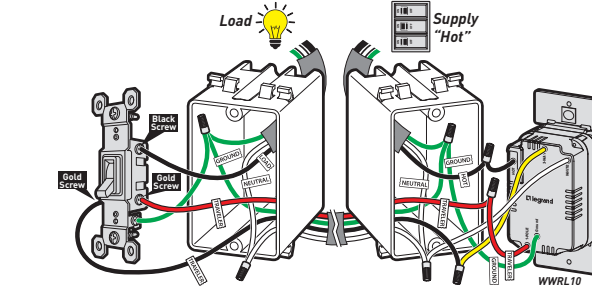
If the light is controlled by two or more switches (3-way), see 3b for instructions.



3b (optional) | wire 3-way smart switch

This product will work with existing three-way switches. To wire Smart Switch to the electrical panel side of the circuit.

- a Connect the WHITE neutral wire on the switch to the neutral wires in the box, using the red wire nut.
- b Connect the LOAD wire on the switch to one of the two traveler wires (the wires connected to the gold screws) in the box.
- c Connect the HOT wire on the switch to the hot wire(s) in the box.
- d Connect the GREEN ground wire on the switch to the ground wire(s) in the box.
- e Connect the YELLOW wire to the remaining traveler wire in the box.



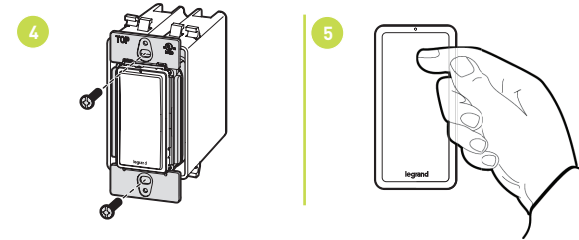
NOTE: To wire Smart Switch to the load side of the circuit. Connect the HOT wire on the switch to load that is being controlled.

SCAN TO SEE HOW TO
WIRE 3-WAY SWITCH



4 | secure smart switch

- a Fold wires into electrical box, taking care not to pinch a wire.
- b Use included screws to secure smart switch to electrical box. Do not fully tighten the screws.



5 | test the smart switch

NOTE: See getting to know your switch section for feature details.

Turn the power back on at the circuit breaker and press switch to turn light on/off.

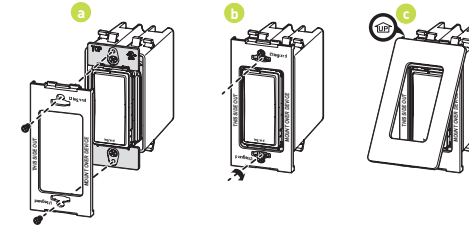
TROUBLESHOOTING TIP:

If the device is not powering check wiring to determine if you have reversed the “HOT” and “LOAD” wiring.

6 | attach wall plate

- a Use the sub-plate screws (provided) to secure the sub-plate to the smart switch.
- b Tighten device screws to secure to the electrical box.
- c Angle the UP end of the wall plate over the top edge of the sub-plate. Push the screwless wall plate down and in until it “snaps” into place over the sub-plate.

NOTE: To remove the wall plate, place the tip of a flat blade screwdriver into the slot under the wall plate and twist gently.



7 | set up your system

- a Download and launch the Smart Lights, Wi-Fi app by Legrand. The app is available on the App Store or on Google Play.

SCAN TO DOWNLOAD



GET IT ON
Google Play



Download on the
App Store

- b Connect your smart switch to your home network by following the step by step instructions in the app.

- c Use the app to control your smart switch.

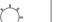


SCAN TO WATCH HOW
TO SET UP THE APP

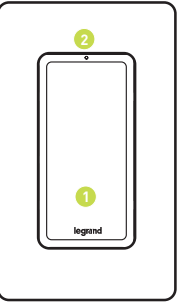


getting to know your switch

Item	Name	Description
1	Paddle Switch	<ul style="list-style-type: none">Press the top of the paddle to turn the light on and the bottom to turn the light off.
2	LED Locator Light	<ul style="list-style-type: none">Indicates the current state of the device. Refer to "LED Locator Light Explanations" for detail.

LED LOCATOR LIGHT EXPLANATIONS

LED Color	State of Light	Explanation
	Blinking White	Device is updating.
	Blinking Amber	Device is ready for setup on your network.
	Solid White	Device is connected to your network and is switched off.



RESET TO FACTORY DEFAULT

Deleting a device from the app will reset it to factory defaults. To manually reset the switch to factory defaults press and hold the off button for 10 seconds until you see the LED blink then release. The device will reset in about 20 seconds after release.

regulatory information

FCC NOTICE

This device complies with Part 15 of the FCC rules. Operation is subject to the following two conditions: (1) this device may not cause harmful interference, and (2) this device must accept any interference received, including interference that may cause undesirable operation.

This equipment has been tested and found to comply with the limits for a Class B digital device, pursuant to Part 15 of the FCC Rules. These limits are designed to provide reasonable protection against harmful interference in a residential installation. This equipment generates, uses, and can radiate radio frequency energy and, if not installed and used in accordance with the instructions, may cause harmful interference to radio communications. However, there is no guarantee that interference will not occur in a particular installation.

If this equipment does cause harmful interference to radio or television reception, which can be determined by turning the equipment off and on, the user is encouraged to try to correct the interference by one or more of the following measures:

- Reorient or relocate the receiving antenna
- Increase the separation between the equipment and receiver
- Connect the equipment into an outlet on a circuit different from that to which the receiver is connected
- Consult the dealer or an experienced radio/TV technician for help

This equipment complies with FCC radiation exposure limits set forth for an uncontrolled environment. This equipment should be installed and operated with a minimum distance of 20 cm between the transmitter's radiating structure(s) and the body of the user or nearby persons.

NOTE: Any changes or modifications to this device that are not expressly approved by the manufacturer will void the warranty and the user's authority to operate the equipment.

FCC ID: A3LCWAM210S

IC NOTICE

This device complies with Industry Canada license-exempt RSS standards. Operation is subject to the following two conditions: (1) this device may not cause interference; and (2) this device must accept any interference, including interference that may cause undesired operation of the device.

RF EXPOSURE STATEMENT

This equipment meets the SAR evaluation limits given in RSS-102 Issue 5 requirements at the minimum separation distance of 15 mm to the human body. Note: Any changes or modifications to this device that are not expressly approved by the manufacturer, will void the warranty and the user's authority to operate the equipment.

IC ID: 649E-CWAM210S

warranty

This product is warranted under normal use against defects in workmanship and materials for as long as you own it. If the product fails due to a manufacturing defect during normal use, return it for a replacement at the store where purchased or contact technical support at 1-877-833-3303.

A dated sales receipt must be provided for all replacement requests (legible copies are acceptable).

Additional warranty details are available at <http://www.legrand.us> under your device's product page.

specifications


Load	Rating
Resistive	120 VAC, 60 Hz, 15 A
Incandescent/halogen	1800 W
Ballast	15 A standard/electronic
Motor	½ HP

Legrand reserves the right to change specifications without notice.

questions? we're here to help

PHONE: 1-877-833-3303
8:00 a.m. to 8:00 p.m. EST (M-F)

EMAIL: smartlighting@legrand.us

CHAT: <https://www.legrand.us/radiant/smart-lighting.aspx>
(Click on the  icon to open a dialogue box)



legrand
Legrand, North America
50 Boyd Avenue
Syracuse, NY 13209
1-877-833-3303
www.legrand.us

