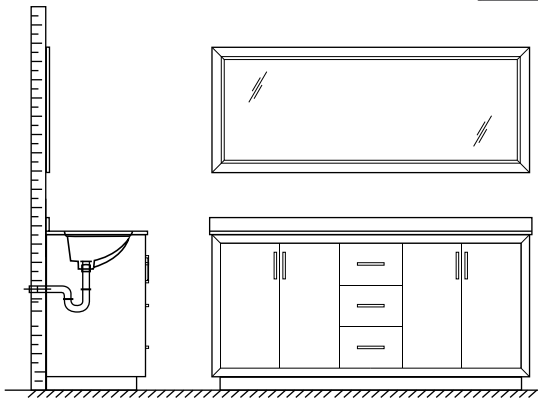
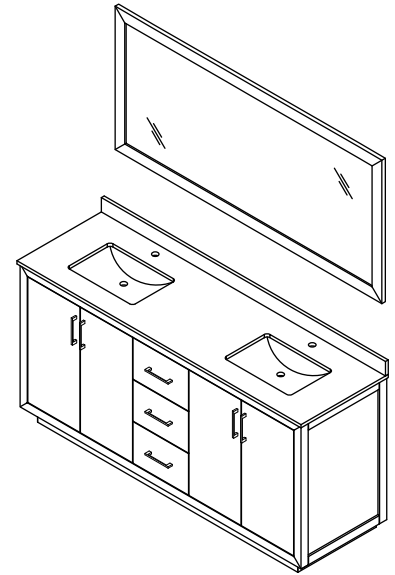


# WYNDHAM COLLECTION

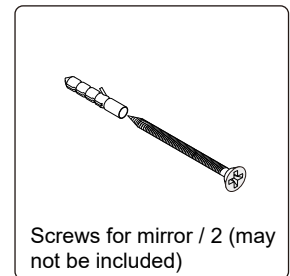
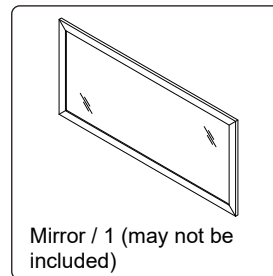
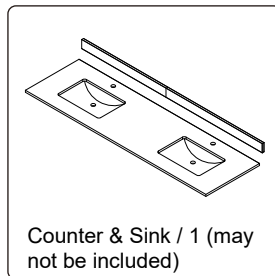
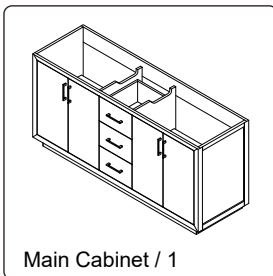


- Prior to installation please check received items against the "Packing List". Please report any missing items to your retailer immediately.
- Protect all surfaces from sharp objects, high heat sources, direct prolonged sunlight and chemical hazards.
- Professional installation recommended.
- Please install on a level surface. If minor door and drawer alignment is required, please follow the easy directions below.
- Backsplash comes in two pieces.

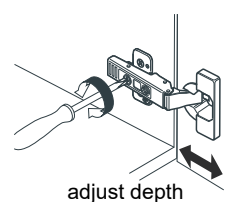
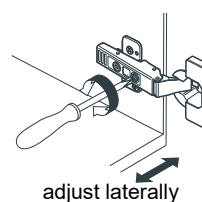
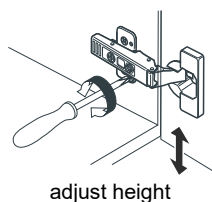
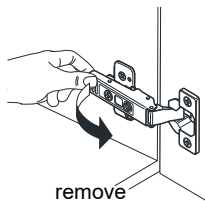
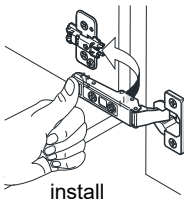


## PACKING LIST

(Not all components may be included, depending upon your purchase)



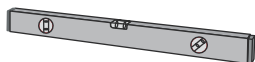
## HOW TO ADJUST HINGES (if required)



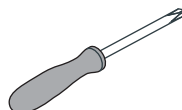
## REQUIRED TOOLS NOT IN BOX



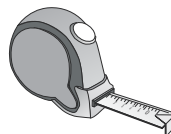
Silicone sealant



Spirit Level



Phillips Screwdriver



Tape measure



Pencil

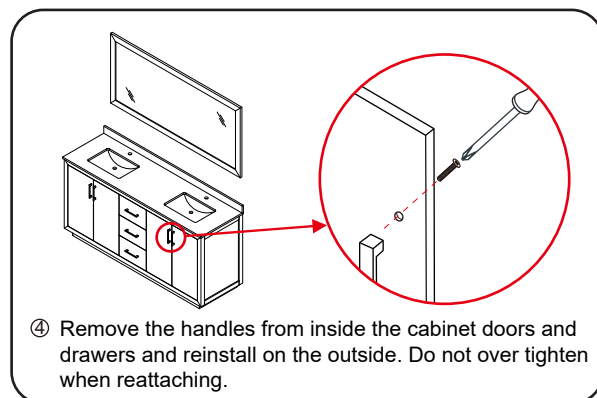
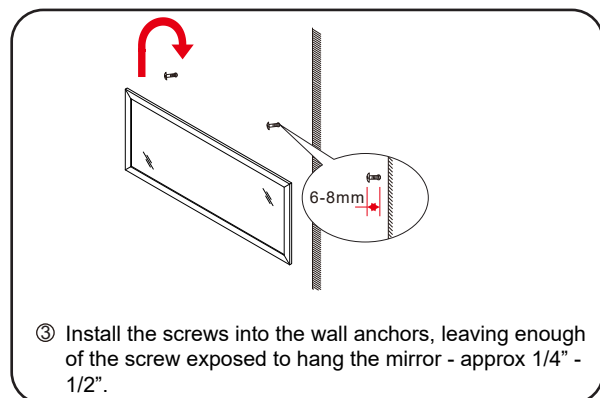
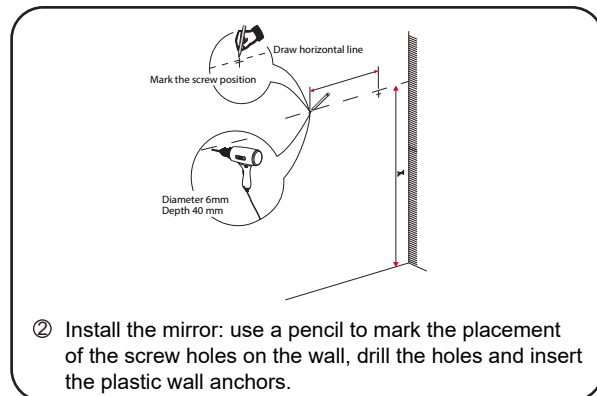
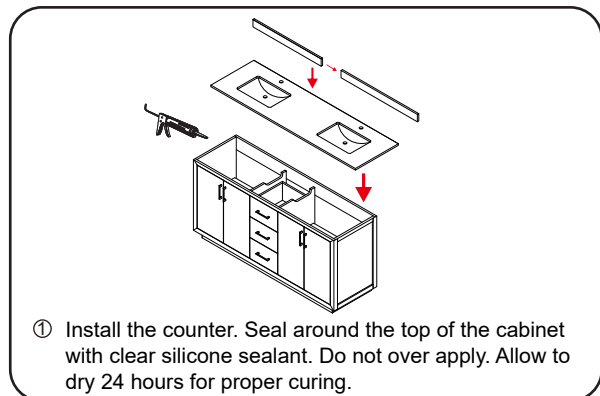


Electric Drill

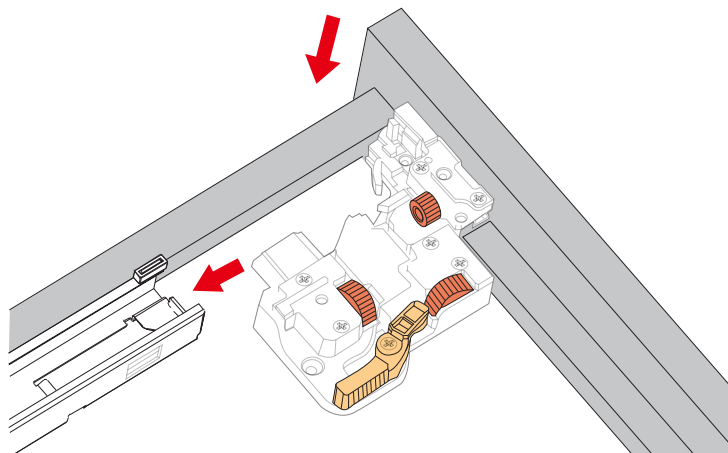
WC-4141-72-DBL  
Installation Guide

# WYNDHAM COLLECTION

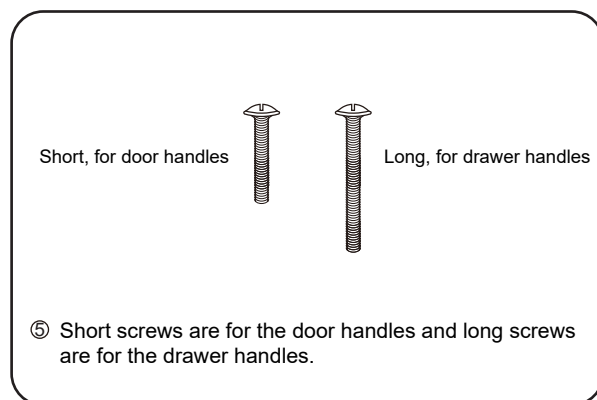
## INSTALLATION INSTRUCTIONS



## HOW TO ADJUST DRAWER SLIDES (if required)

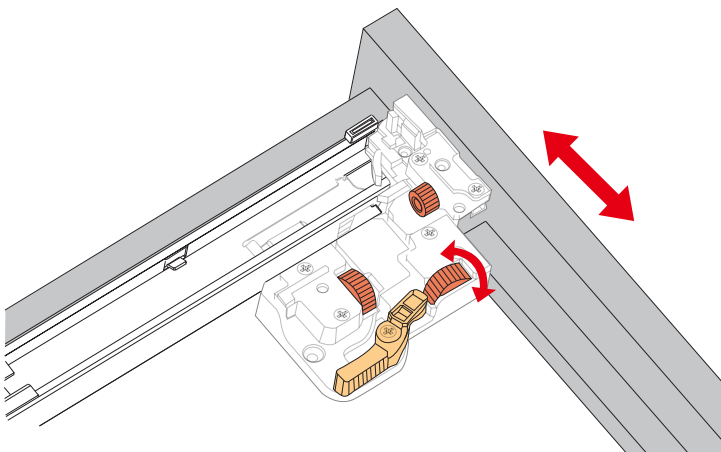


Up and Down Adjustment

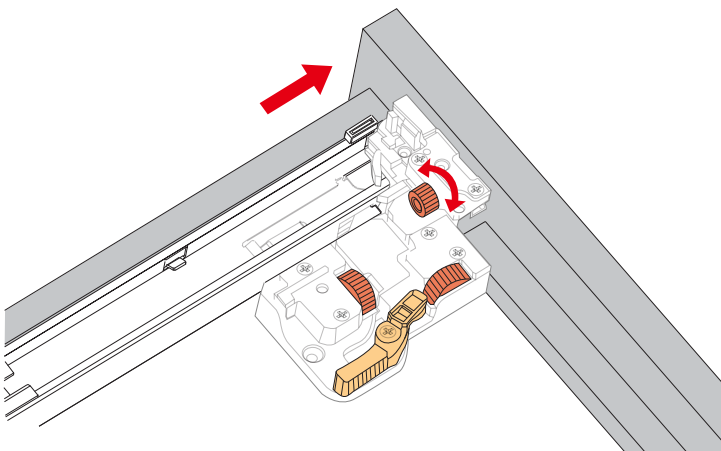


WC-4141-72-DBL  
Installation Guide

# WYNDHAM COLLECTION



Side Adjustment



Depth Adjustment

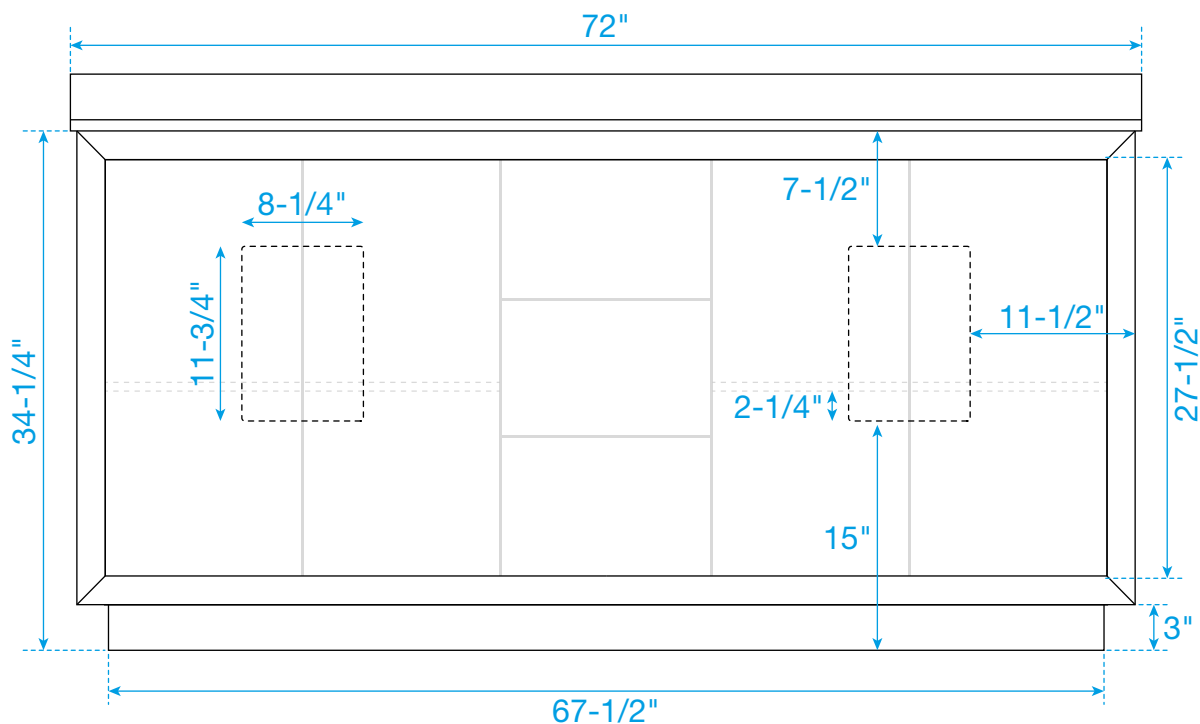


Scan the QR code with your phone to watch detailed video instructions or visit [www.wyndhamcollection.com/3dslides](http://www.wyndhamcollection.com/3dslides)

## WC-4141-72-DBL Installation Guide

# WYNDHAM COLLECTION

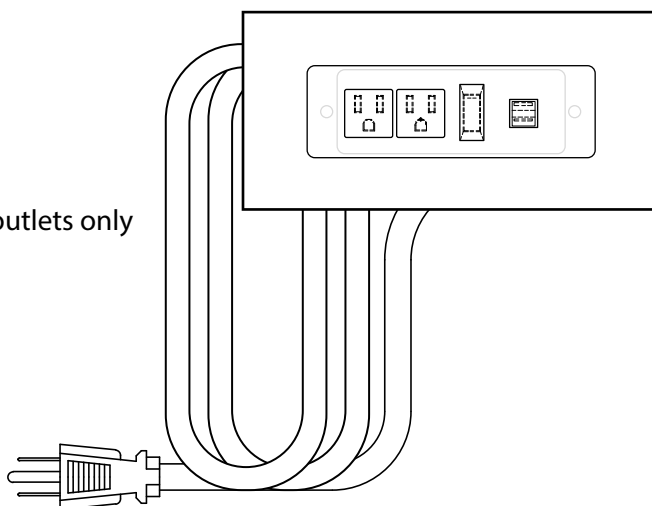
## Backboard Cutouts



\*Note: All measurements are  $\pm 1/4"$ .

## Electrical Outlets with Charging Hub

Easy to install  
Long 5 foot plug in cord  
2 electrical outlets, 125V 15A  
Tamper Resistant (TR) outlets  
Power reset switch  
2 USB ports, 5V 2.1A Max  
Use with ground-fault circuit interrupter (GFCI) outlets only  
Residential use only  
Follow all applicable electrical codes  
ETL Listed  
Conforms to UL Standard 962A  
Certified to CAN/CSA Standard C22.2 No. 308



# WC-4141-72-DBL Installation Guide