

ASSEMBLY AND INSTALLATION INSTRUCTIONS

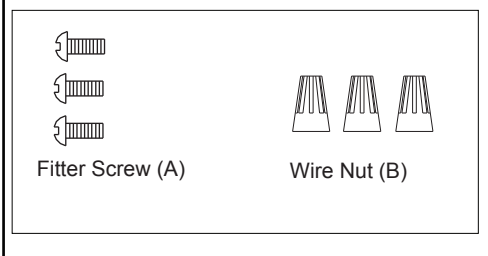
T0312

WARNING: TO AVOID RISK OF ELECTRICAL SHOCK, BE SURE TO SHUT OFF POWER BEFORE INSTALLING OR SERVICING THIS FIXTURE.

NOTE: 1. Before installing, consult local electrical codes for wiring and grounding requirements.
2. READ AND SAVE THESE INSTRUCTIONS.

Warning: LED electronics can be damaged by electro static discharge (ESD) shock. Before installation, discharge yourself by touching a grounded bare metal surface to remove this hazard. To avoid damage, do not touch the LED module.

Hardware Package (included):



Installation steps

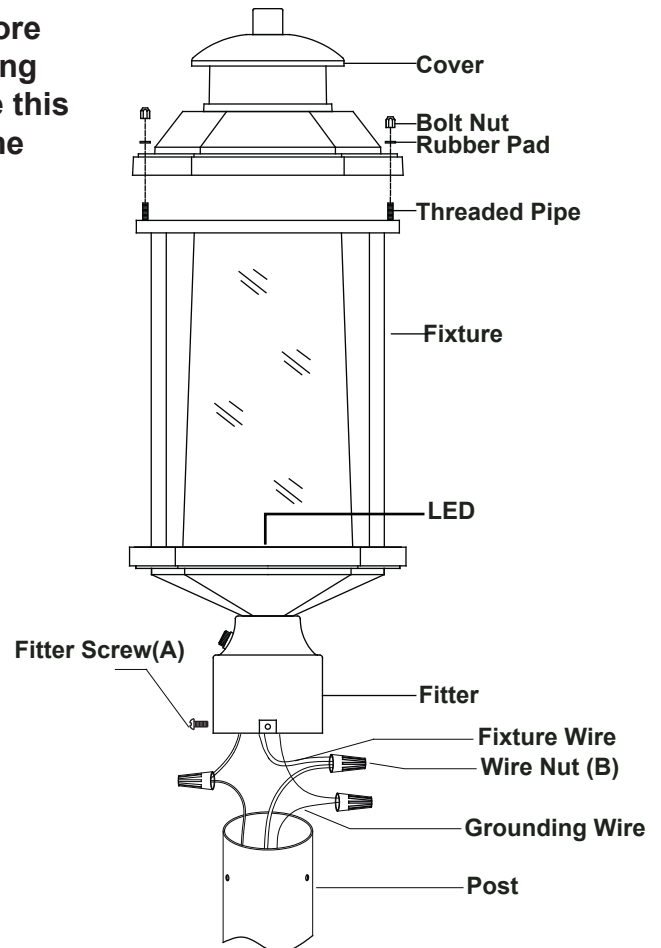
Turn off the power at fuse or circuit box.

IMPORTANT:

The sensor has an excellent photocell function to enable the light to turn on at dusk and off at dawn automatically.

1. Attach the cover onto the threaded pipes of the fixture and tighten it with rubber pads and bolt nuts.
2. Pull out the source wires from the post. Make wire connections using wire nuts as follow:
 - Connect the hot wire (usually black insulation) from the fixture to the black wire from the post
 - Connect the neutral wire (usually white insulation) from the fixture to the white wire from the post
 - Attach the fixture grounding wire (usually green insulation or bare wire) to the grounding wire from the post.Carefully put the wires back into the post.
3. Place the fitter on the post, then secure it with the fitter screws. .

Turn on the power at fuse or circuit box.



Operation the Unit Without Photocell

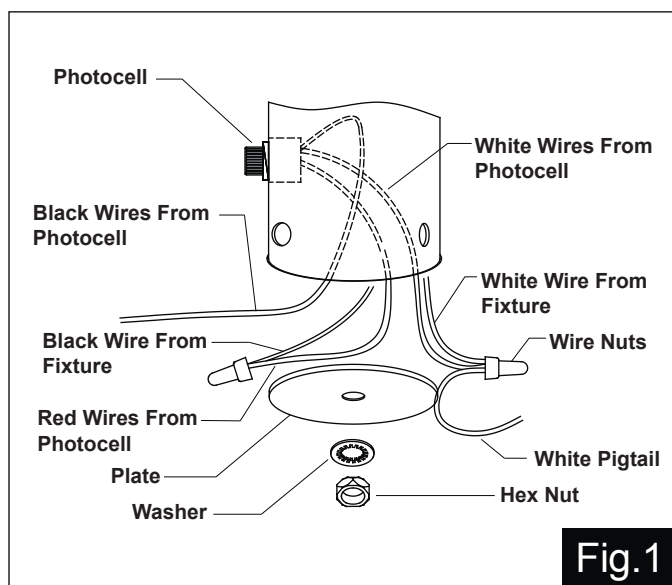


Fig.1

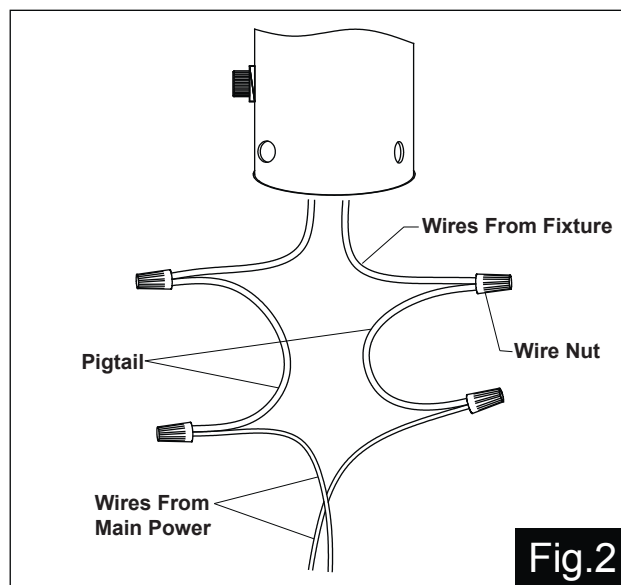


Fig.2

1. Turn off the power at fuse or circuit box before starting installation.
 2. Unscrew the hex nut and washer to remove the plate from the fixture.
 2. Loosen the wire nuts connected with the wires from photocell. (See Fig.1)
- Note: Do not move the photocell to prevent water from seeping into the post.**
3. Take a white pigtail and black pigtail and make wire connections using wire nuts: (See Fig.2)
 - a. The black wire from the fixture to one end of the black pigtail.
 - b. The white wire from the fixture to one end of the white pigtail.
 - c. The other end of the black pigtail to the black wire from the power source.
 - d. The other end of the white pigtail to the white wire from the power source.
 Put all wires back into the post.

The following parts are available for re-order if damaged or missing.

Spare Parts List:

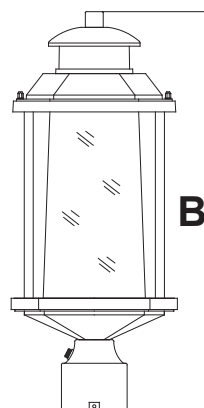


Fitter Screw (A)

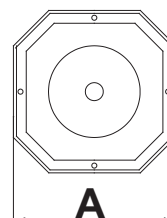


Wire Nut (B)

←
Mounting Hardware
5627MM(1 SET)



A: 8-3/4"
B: 21-3/4"



A