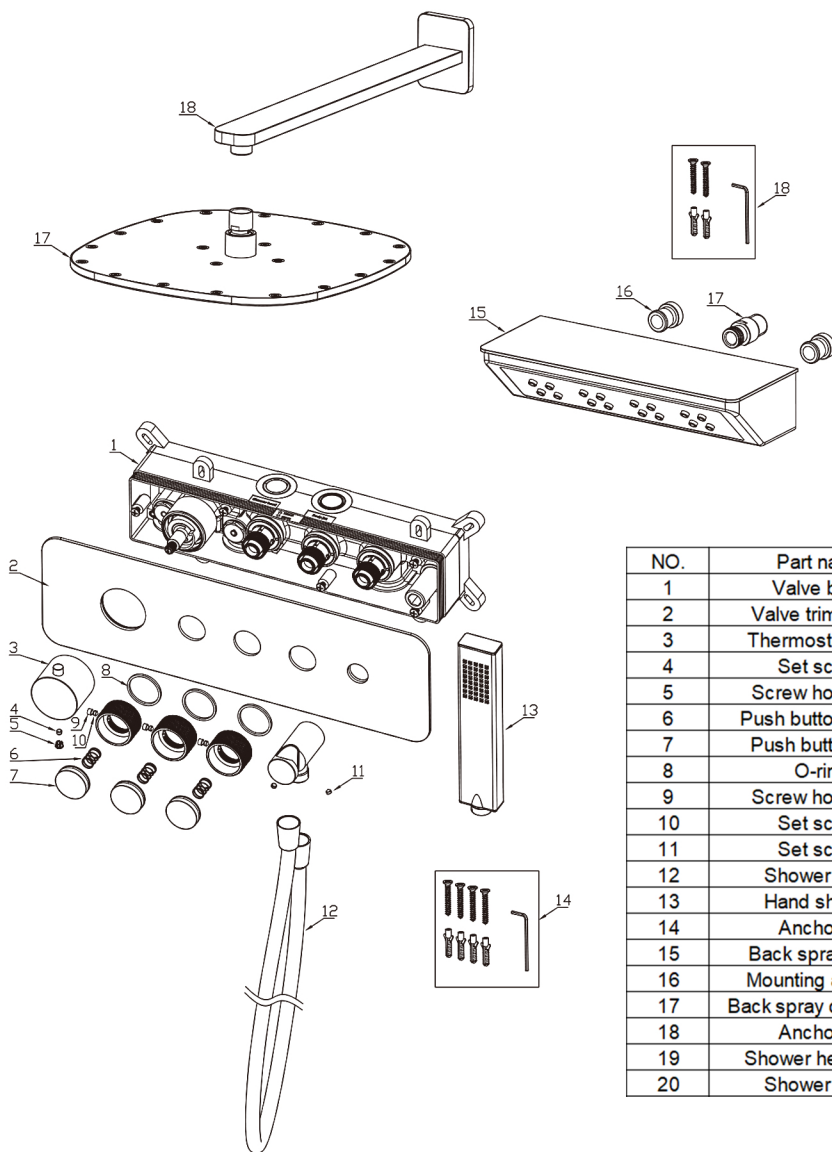


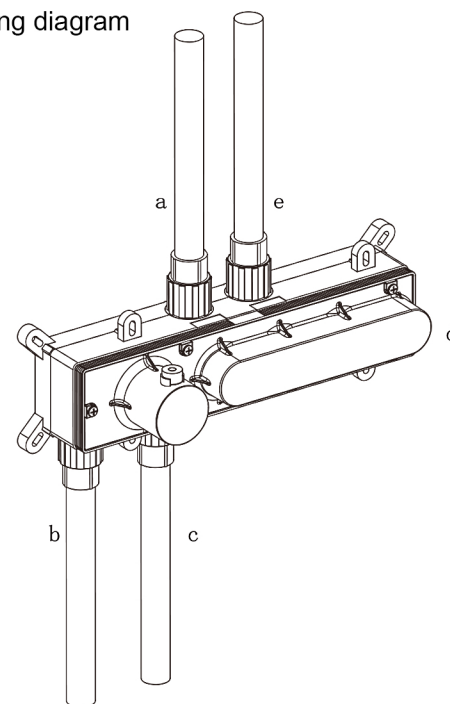
**KCHS0026-MB**

## PART LIST



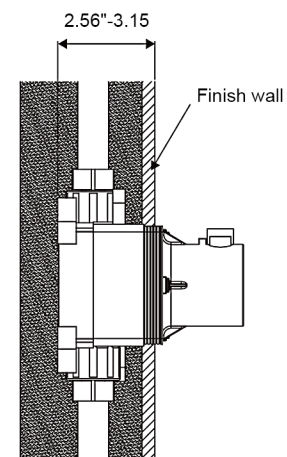
NO.	Part name	QTY
1	Valve body	1
2	Valve trim panel	1
3	Thermostat knob	1
4	Set screw	1
5	Screw hole plug	1
6	Push button spring	3
7	Push button cap	3
8	O-ring	3
9	Screw hole plug	3
10	Set screw	1
11	Set screw	1
12	Shower hose	1
13	Hand shower	1
14	Anchor kit	1
15	Back spray head	1
16	Mounting adapter	2
17	Back spray connector	1
18	Anchor kit	1
19	Shower head arm	1
20	Shower head	1

## Piping diagram

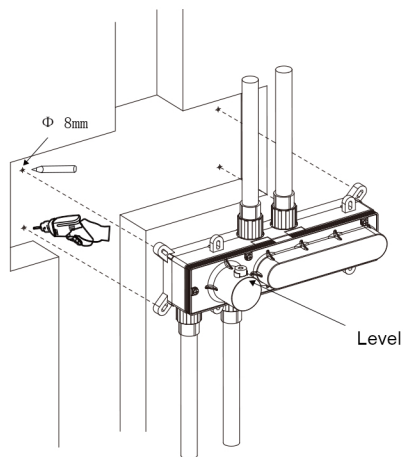


a	Shower head outlet
b	Hot water inlet
c	Cold water inlet
d	Hand shower outlet
e	Back spray head outlet

## Installation depth of valve body

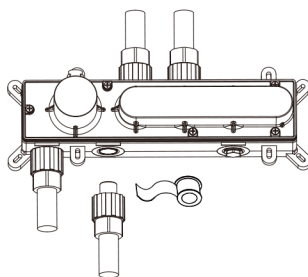


1. Secure the valve body to the mounting surface ensuring the valve body is level.

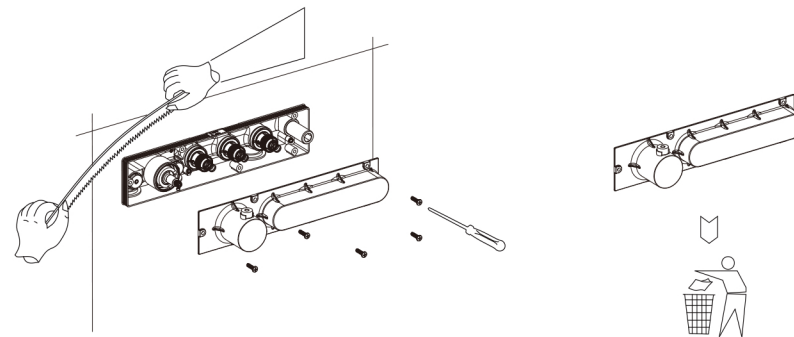


2. Wrap teflon tape around the threads of the male adapters and connect the hot, cold, shower head, and back spray head water lines to the valve body.

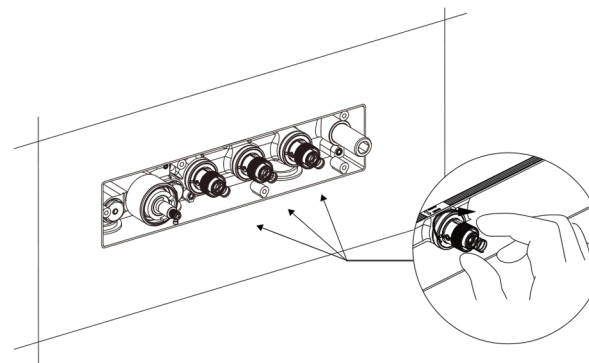
NOTE: See Step 13 Hand shower, Step 20 shower head.



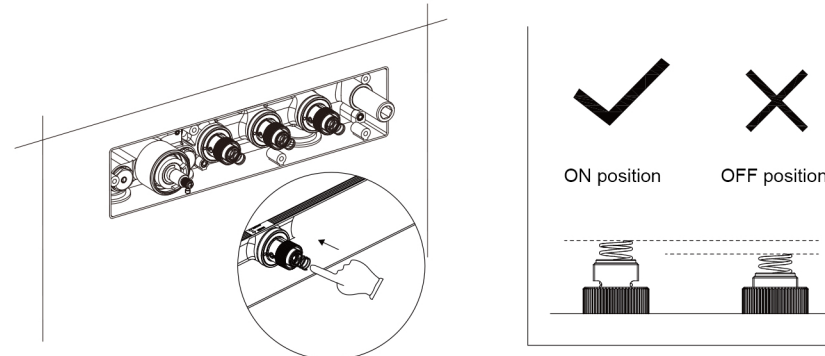
3. After the wall is finished, remove the plasterboard from the valve body and cut the valve body casing flush with the wall if necessary. Discard the plasterboard.



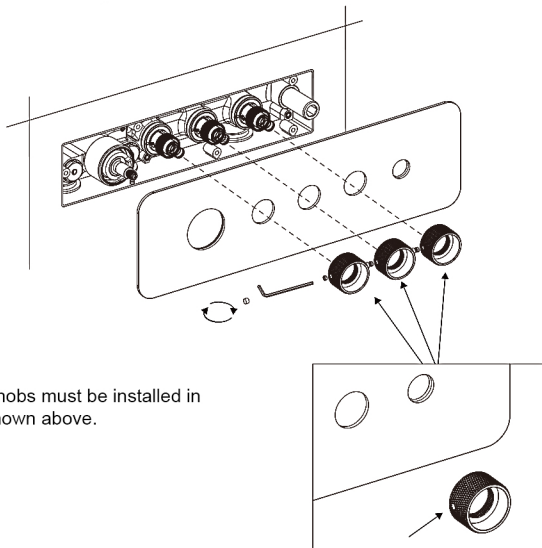
4. Rotate all the valve stems clockwise to their stopping point.



5. Push the three cartridge stems making sure that they are at the on position.

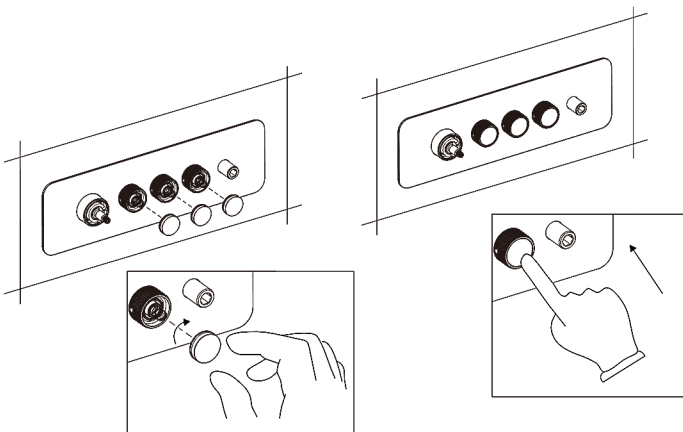


6. Install the valve trim panel and the diverter knobs as shown in the image below. Secure the knobs by using an Allen wrench to tighten the set screws.



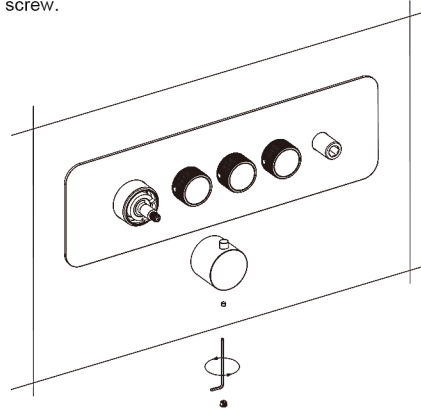
**IMPORTANT!**  
The diverter knobs must be installed in the position shown above.

7. Screw the push button caps on until the O-ring is no longer visible, making sure that they are even with the end of the knobs.

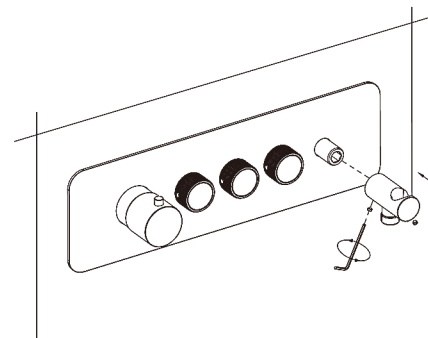


**ATTENTION!**  
The push button should be flush with the end of the knob.

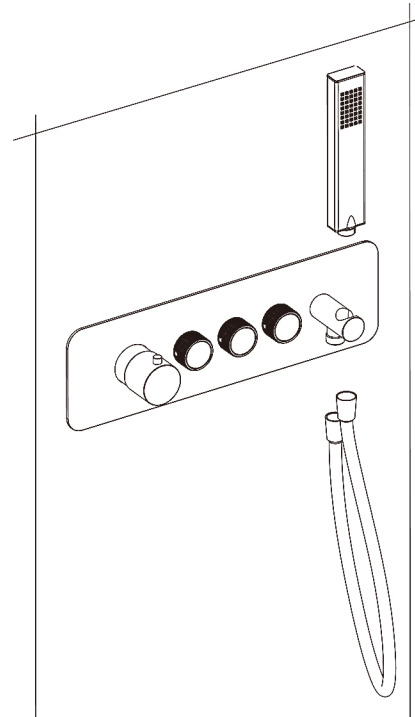
8. Install the temperature control knob exactly how it is shown in the image below. Secure the knob by using an Allen wrench to tighten the set screw.



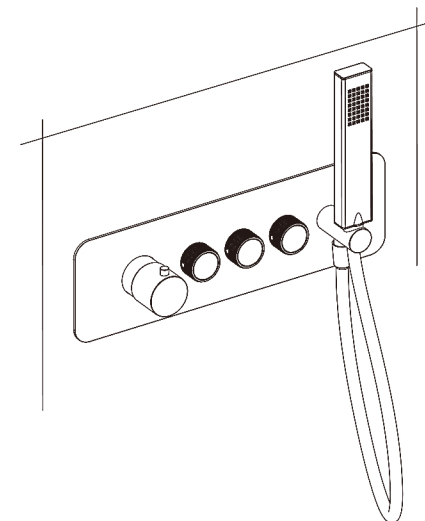
9. Install the hand shower arm to the hand shower outlet on the valve body.



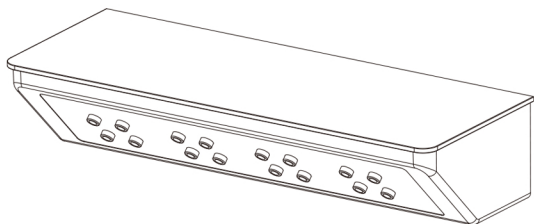
10. Connect the hand shower and hose.



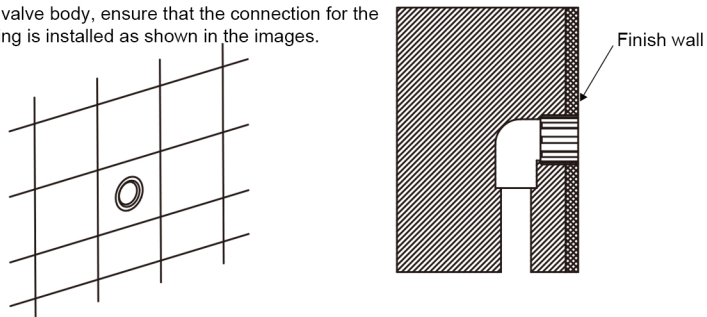
11. Valve trim panel, knob and hand shower installation finished.



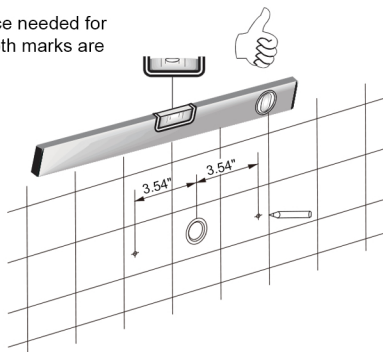
12. Install the back spray head



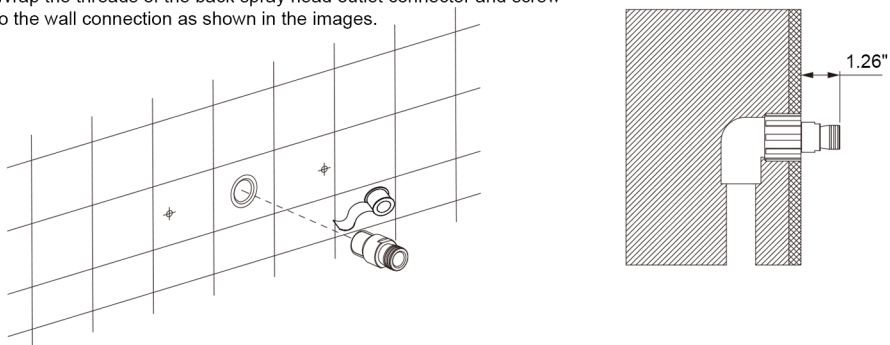
13. When piping the valve body, ensure that the connection for the back spray head piping is installed as shown in the images.



14. After verifying the center of the water outlet and distance needed for the mounting adapters mark the locations ensuring that both marks are level.

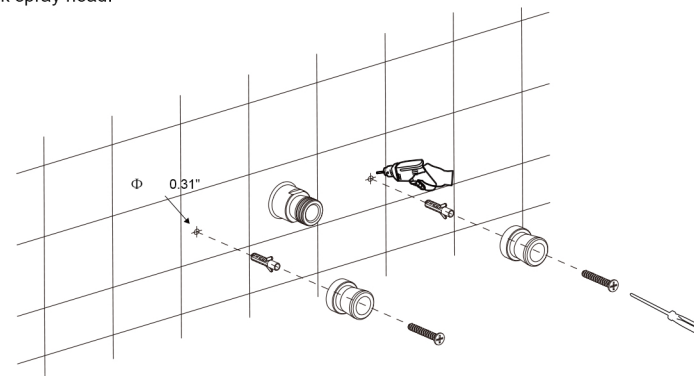


15. Wrap the threads of the back spray head outlet connector and screw it into the wall connection as shown in the images.

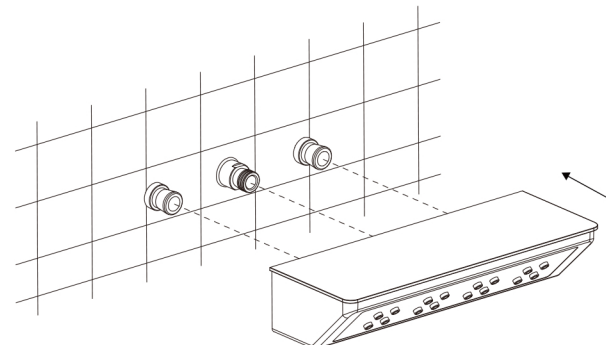


16. Drill out the two marks and secure the mounting adapters to the finish wall.

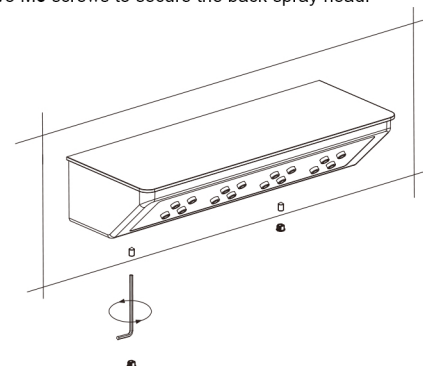
NOTE: If the adapters are not level across you will have a difficult time installing the back spray head.



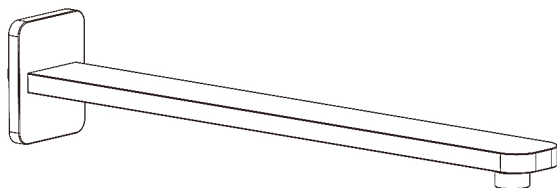
17. Install the back spray head onto the outlet connector and mounting adapters.



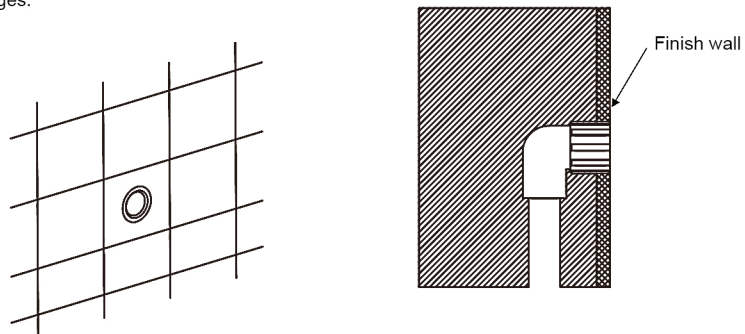
18. Tighten the two M5 screws to secure the back spray head.



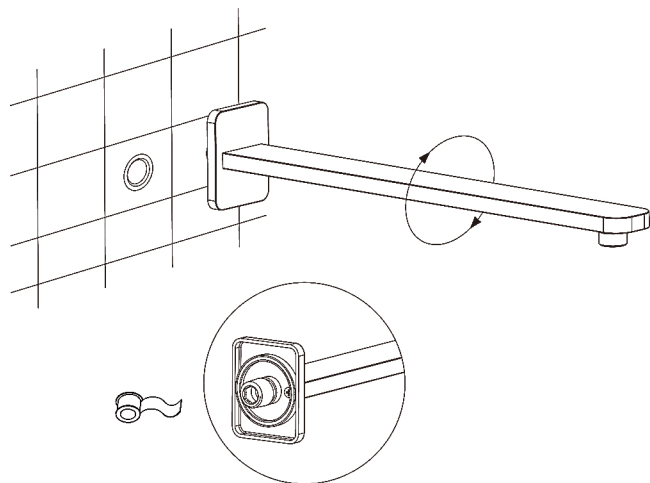
19. Install shower head arm.



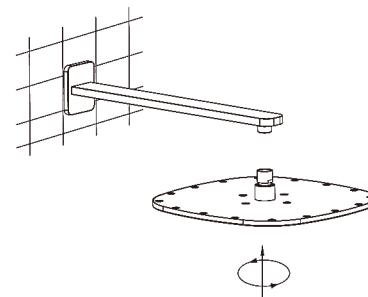
20. When piping the valve body, ensure that the connection for the shower head piping is installed as shown in the images.



21. Wrap the threads of the shower head arm with teflon tape and screw it into the wall connection as shown in the images.



22. Wrap the threads on the opposite side of the shower arm and screw the shower head onto the arm.



23. Shower head installation finished.

