



HARBOR BREEZE and logo design are trademarks or registered trademarks of LF, LLC. All rights reserved.

ITEM #4057324  
4057325  
0901460

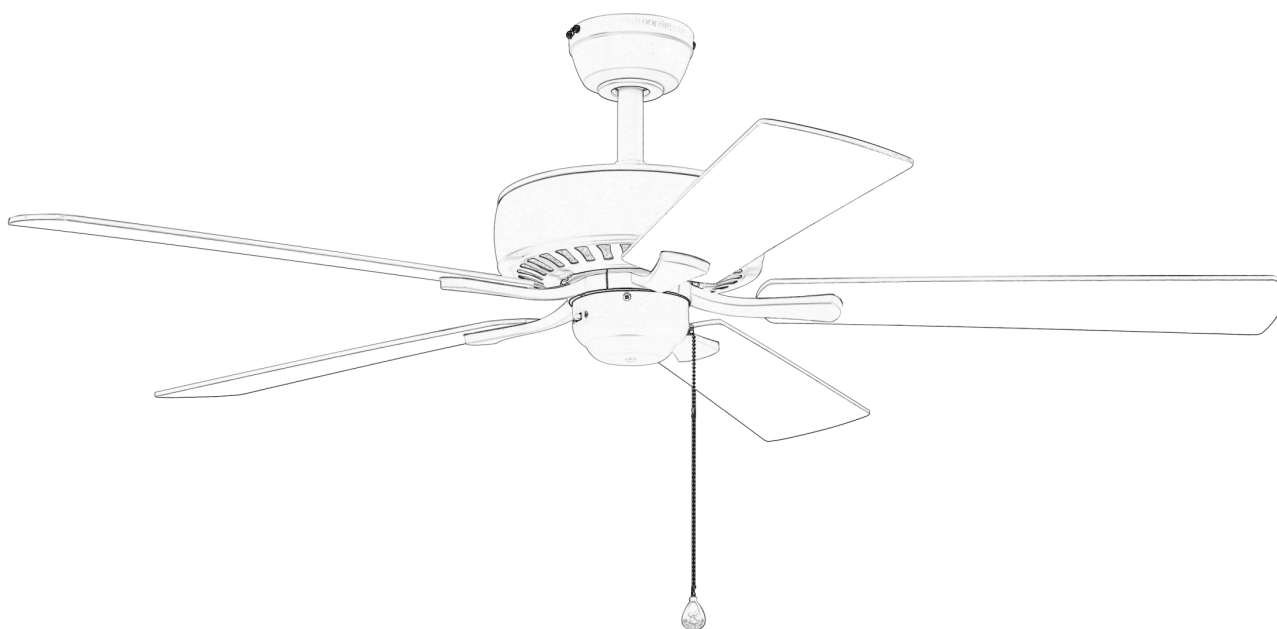
## CYPRESS POINTE CEILING FAN

MODEL # CPR52MBK5  
CPR52WW5  
CPR60OSB5

**Español p. 17**

**ATTACH YOUR RECEIPT HERE**

**ADJUNTE SU RECIBO AQUÍ**



Purchase Date \_\_\_\_\_



**Intertek**



**Questions, problems, missing parts?** Before returning to your retailer, call our customer service department at **1-888-251-1003**, 8 a.m. - 8 p.m., EST, Monday - Sunday. You could also contact us at [partsplus@lowes.com](mailto:partsplus@lowes.com) or visit [www.lowespartsplus.com](http://www.lowespartsplus.com).

## TABLE OF CONTENTS

---

Safety Information .....	2
Package Contents .....	4
Hardware Contents .....	5
Preparation .....	5
Initial Installation .....	6
Downrod-Style Fan Mounting .....	7
Closemount-Style Fan Mounting .....	9
Wiring .....	11
Final Installation .....	12
Operating Instructions .....	13
Care and Maintenance .....	15
Troubleshooting .....	15
Limited Lifetime Warranty .....	16
Replacement Parts List .....	16



## **SAFETY INFORMATION**

---

### **READ AND SAVE THESE INSTRUCTIONS**

Please read and understand this entire manual before attempting to assemble, install or operate the product.

- Do not discard fan carton or foam inserts. Should this fan need to be returned to the factory for repairs, it must be shipped in its original packaging to ensure proper protection against damage that might exceed the initial cause for return.
- Make sure all electrical connections comply with local codes, ordinances, the National Electrical Code and ANSI/NFPA 70-1999. Hire a qualified electrician or consult a do-it-yourself wiring handbook if you are unfamiliar with installing electrical wiring.
- Make sure the installation site you choose allows a minimum clearance of 7 ft. from the blades to the floor and at least 30 in. from the end of the blades to any obstruction.
- After you install the fan, make sure all connections are secure to prevent the fan from falling.
- The net weight of this fan is: CPR52MBK5 and CPR52WW5: 19 lbs.  
CPR60OSB5: 21 lbs.

## **DANGER**

When using an existing outlet box, make sure the outlet box is securely attached to the building structure and can support the full weight of the fan. Failure to do this can result in serious injury or death. The stability of the outlet box is essential in minimizing wobble and noise in the fan after installation is complete.

To reduce the risk of serious bodily injury, DO NOT use power tools to assemble any part of the fan, including the blades.

## **WARNING**



To reduce the risk of fire, electrical shock or personal injury, mount fan to outlet box marked "ACCEPTABLE FOR FAN SUPPORT OF 35 LBS. (15.9 KG) OR LESS" and use mounting screws provided with the outlet box. Most outlet boxes commonly used for the support of lighting fixtures are not acceptable for fan support and may need to be replaced. Consult a qualified electrician if in doubt.

When mounting fan to a ceiling outlet box, use a METAL octagonal outlet box; do NOT use a plastic outlet box. Secure the outlet box directly to the building structure. The outlet box and its support must be able to support the moving weight of the fan (at least 35 lbs.).

To avoid personal injury, the use of gloves may be necessary while handling fan parts with sharp edges.

To reduce the risk of fire, electrical shock or personal injury, wire connectors provided with this fan are designed to accept only one 12-gauge house wire and two lead wires from the fan. If your house wire is larger than 12-gauge or there is more than one house wire to connect to the corresponding fan lead wires, consult an electrician for the proper size wire connectors to use.

To reduce the risk of fire or electrical shock, do not use the fan with any solid state speed control device or control fan speed with a full range dimmer switch.

To reduce the risk of fire, electrical shock or personal injury, do not bend the blade arms when installing them, balancing the blades or cleaning the fan. Do not insert objects between the rotating fan blades.

To reduce the risk of personal injury, use ONLY parts provided with this fan. The use of parts OTHER than those provided with this fan will void the warranty.

Before installation, be sure to shut off electricity at main switch or circuit breaker in order to avoid electrical shock.

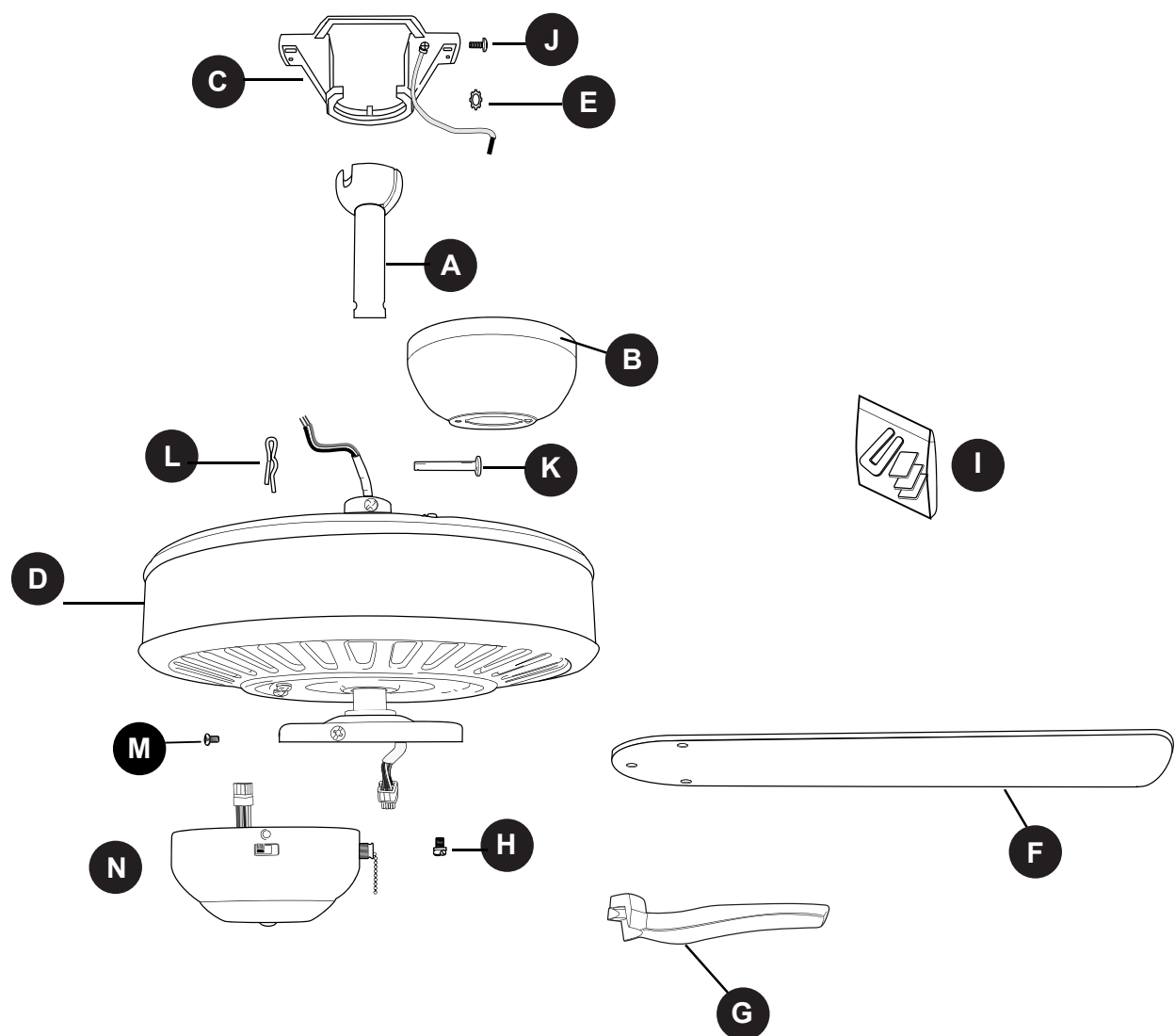
## **CAUTION**

Read all instructions and safety information before installing your new fan. Review the accompanying assembly diagrams.

Be sure outlet box is properly grounded and that a ground wire (green or bare) is present.

Once installation is complete, carefully check all screws, bolts and nuts on fan motor assembly to ensure that they are secured.

PACKAGE CONTENTS



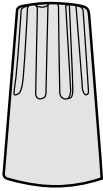

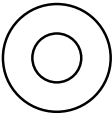
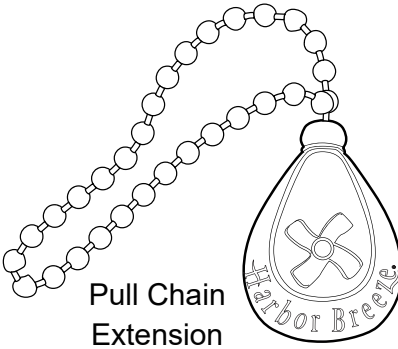
PART	DESCRIPTION	QUANTITY
A	Downrod	1
B	Canopy	1
C	Mounting Bracket	1
D	Motor Housing	1
E	Star Washer	4
F	Blade	5
G	Blade Arm	5
H	Motor Screw/Lock washer (preassembled)	10

PART	DESCRIPTION	QUANTITY
I	Balancing Kit	1
J	Canopy Mounting Screw (preassembled)	4
K	Pin (preassembled)	1
L	Clip (preassembled)	1
M	Switch Housing Screws (preassembled)	3
N	Switch Housing	1

**⚠ IMPORTANT REMINDER:** You must use the parts provided with this fan for proper installation and safety.

## HARDWARE CONTENTS (shown actual size)

---

AA	BB	CC	DD
			
Wire Connector	Blade Screw	Fiber Blade Washer	Pull Chain Extension
Qty. 4	Qty. 15 + 1 extra	Qty. 15 + 1 extra	Qty. 1

## PREPARATION

---

Before beginning assembly of product, make sure all parts are present. Compare parts with package contents list and hardware contents list. If any part is missing or damaged, do not attempt to install, operate or assemble the product.

**Estimated Assembly Time: 120 minutes**

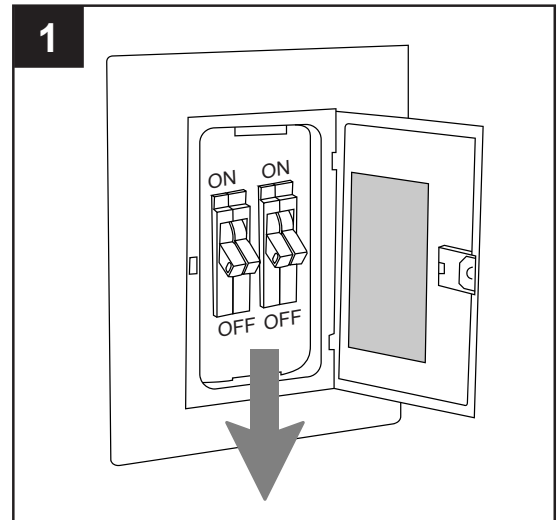
Tools Required for Assembly (not included): Electrical Tape, Phillips Screwdriver, Pliers, Safety Glasses, Stepladder and Wire Strippers.

Helpful Tools (not included): AC Tester Light, Tape Measure, Do-It-Yourself Wiring Handbook and Wire Cutters.

## INITIAL INSTALLATION

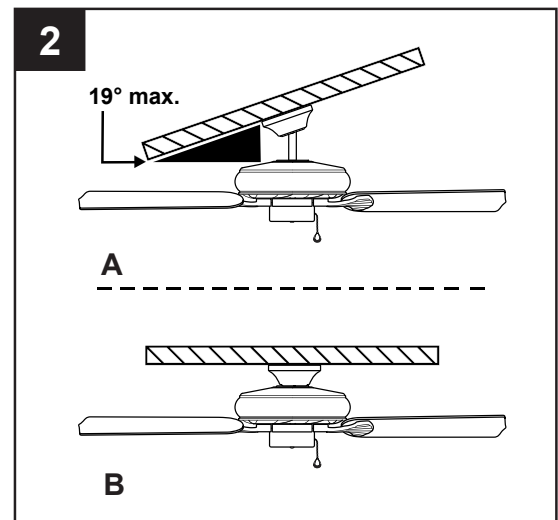
1. Turn off circuit breakers and wall switch to the fan supply line leads.

**⚠ DANGER:** Failure to disconnect power supply prior to installation may result in serious injury or death.

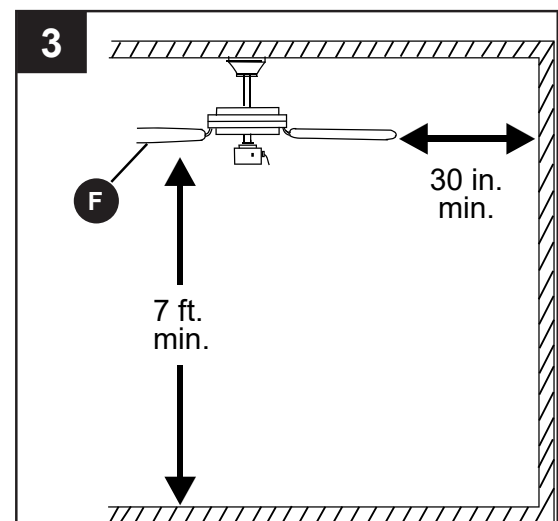


2. Determine mounting method to use.
  - A. Downrod-style mount (standard or angled ceiling).
  - B. Closemount-style (standard ceiling only).**IMPORTANT:** If using the angle mount, check to make sure the ceiling angle is not steeper than 19°.

**\*Helpful Hint:** Downrod-style mounting is best suited for ceilings 8 ft. or higher. For taller ceilings you may want to use a longer downrod (not included). Angle-style mounting is best suited for angled or vaulted ceilings. A longer downrod is sometimes necessary to ensure proper blade clearance.



3. Check to make sure blades (F) are at least 30 in. from any obstruction and at least 7 ft. above the floor.

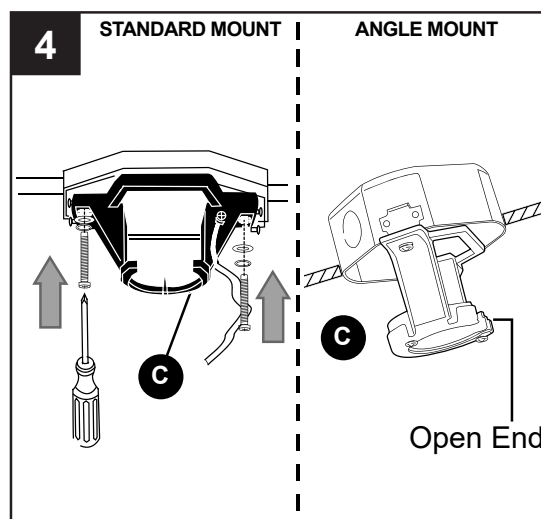


## INITIAL INSTALLATION

- Secure mounting bracket (C) to outlet box (not included) using screws, spring washers and flat washers provided with the outlet box.

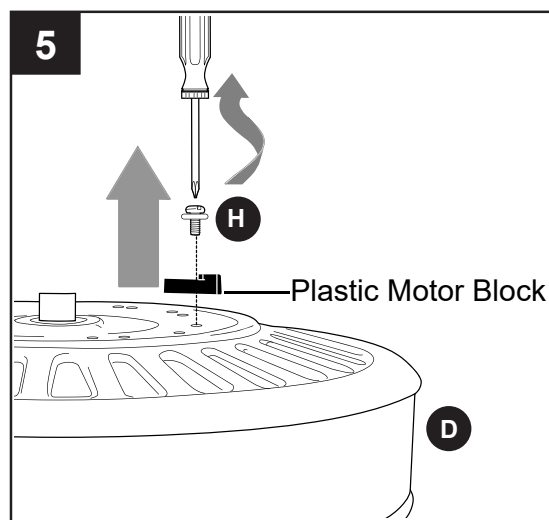
**\*NOTE:** It is very important you use the proper hardware when installing the mounting bracket (C) as this will support the fan.

**IMPORTANT:** If using the angle mount, make sure open end of mounting bracket (C) is installed facing the higher point of the ceiling, and ensure the ceiling angle is not steeper than 19°.



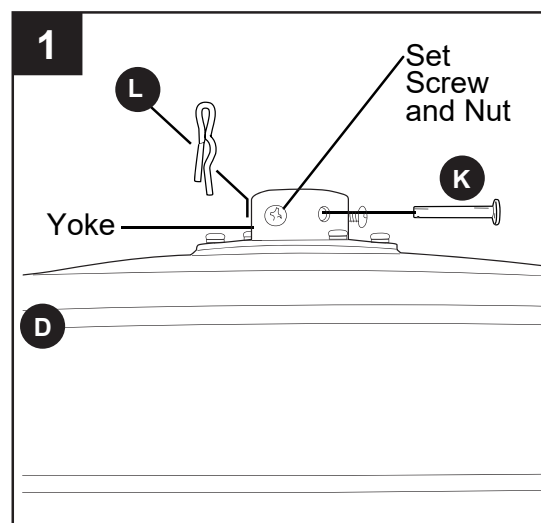
- Remove motor screws/lock washers (H) from underside of motor housing (D).  
**NOTE:** Use slot in motor plate for easy access to motor screws/lock washers (H) with screwdriver. [If there are plastic motor blocks installed with the motor screws/lock washers (H), discard the plastic motor blocks.]

For **DOWNROD-STYLE FAN MOUNTING**, proceed to step 1 below. For **CLOSEMOUNT-STYLE FAN MOUNTING**, skip to page 9.



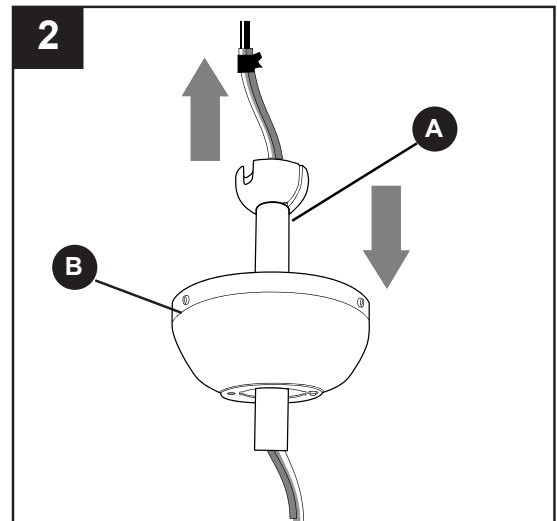
## DOWNROD-STYLE FAN MOUNTING

- Remove pin (K) and clip (L) from yoke at top of motor housing (D) and partially loosen preassembled set screws and nuts.

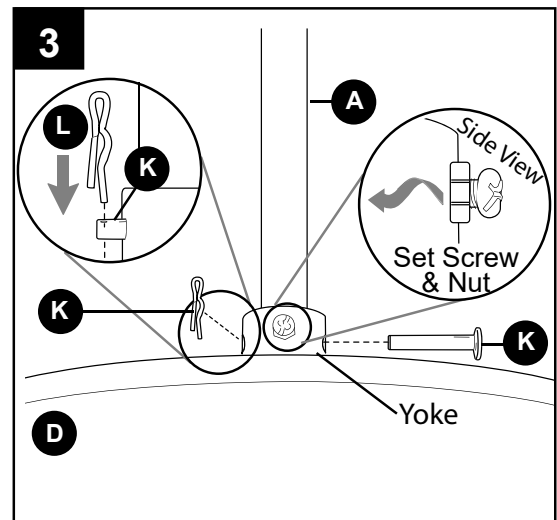


## DOWNROD-STYLE FAN MOUNTING

2. Insert downrod (A) through canopy (B). Thread wires from motor housing (D) up through downrod (A).



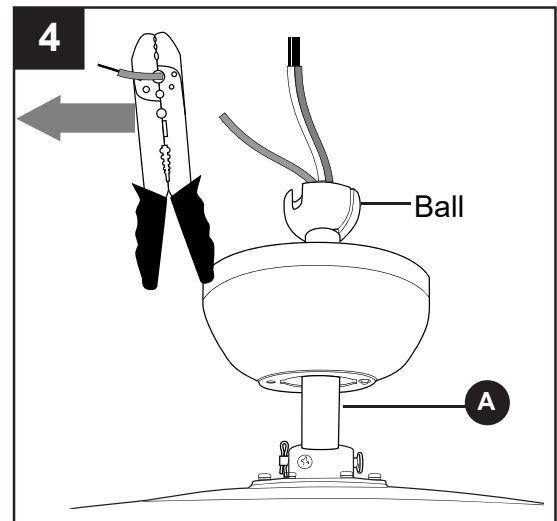
3. Slip downrod (A) into motor housing yoke, align holes and re-install pin (K) and clip (L). Tighten set screws in motor housing yoke and then tighten preassembled nuts on the set screws.



4. Depending on the length of downrod you use, you may need to cut the lead wires back to simplify the wiring. If you decide to cut back the lead wires, it is suggested you do so in the following manner:

Take the lead wires and make sure you have pulled them all the way through the top of the downrod. Start at the TOP of the ball on the downrod and measure 8 in. of lead wire, and then cut the excess wire off with wire cutters (not included).

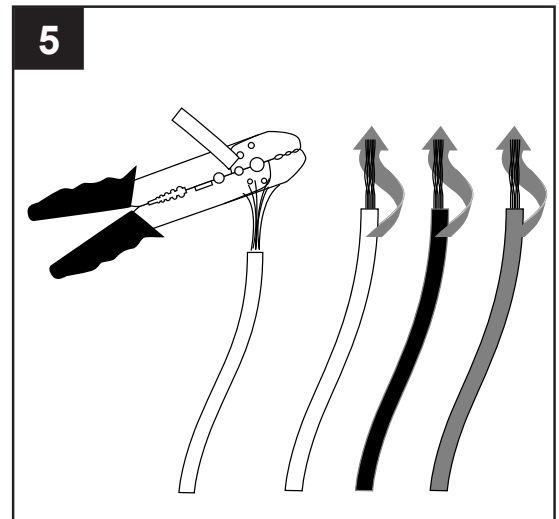
**NOTE:** If you do **not** cut back the lead wires, **Steps 4 and 5 are not necessary and you may proceed to Step 6 instead.**





## DOWNROD-STYLE FAN MOUNTING

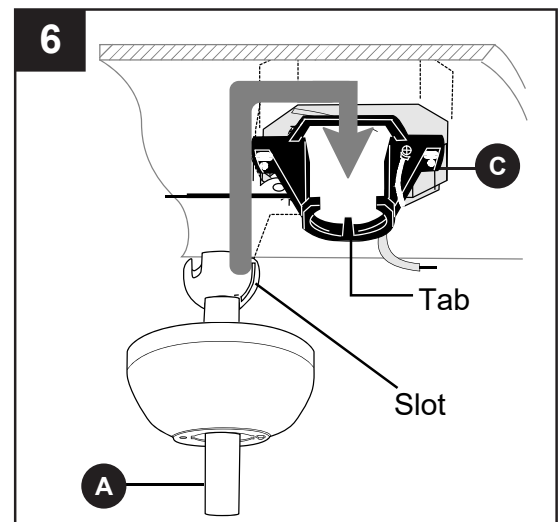
5. If you cut back the lead wires in Step 4, strip 3/4 in. of insulation from end of each wire -- white, black, green and blue (if applicable). Twist stripped ends of each strand of wire within the insulation with pliers (not included).



6. Install ball end of downrod (A) into opening of mounting bracket (C). Align slot in ball with tab in mounting bracket (C).

**⚠ DANGER:** Failure to align slot in ball with tab in mounting bracket (C) may cause the fan to wobble or fall, which could result in serious injury or death.

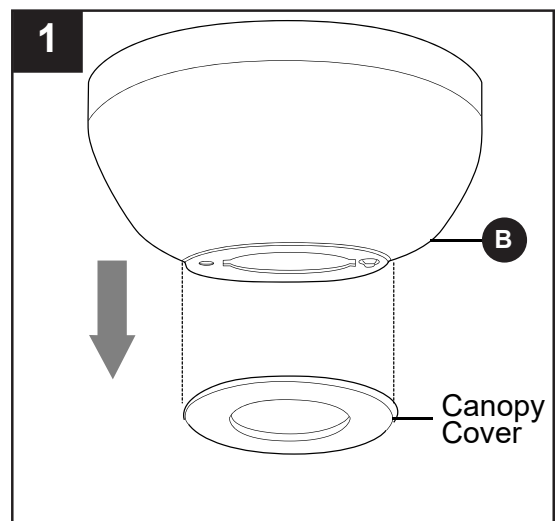
Continue to **WIRING** on page 11.



## CLOSEMOUNT-STYLE FAN MOUNTING

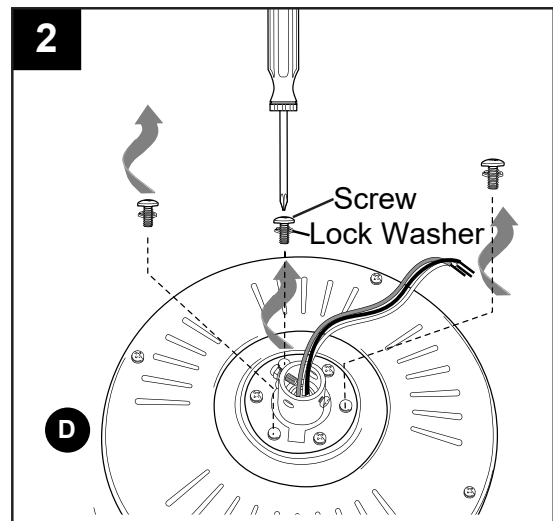
1. Remove canopy cover from bottom of canopy (B).  
[NOTE: It may be necessary to use the handle end of a screwdriver (not included) to remove the canopy cover by tapping gently on the canopy cover from the inside of the canopy (B).]

**NOTE:** The downrod (A) and canopy cover are not used in this type of installation.

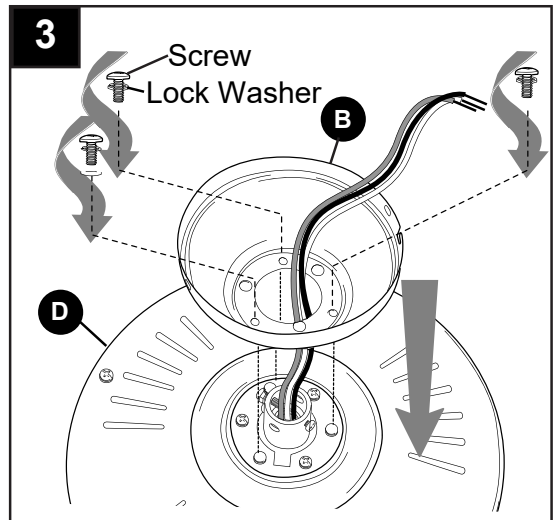


## CLOSEMOUNT-STYLE FAN MOUNTING

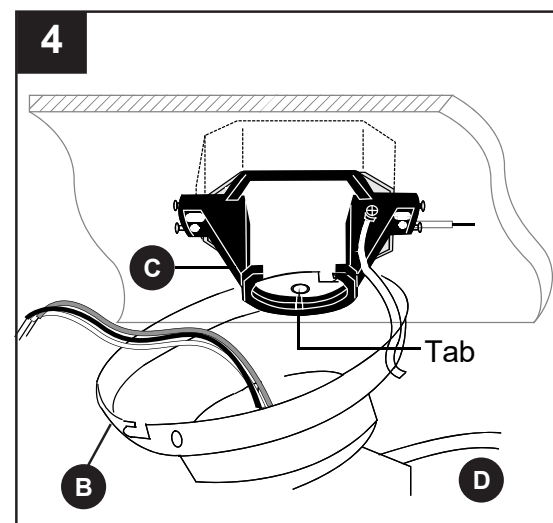
2. Remove every other preassembled screw/lock washer from top of motor housing (D).



3. Pull wires up through hole in the middle of the canopy (B) and attach canopy (B) to motor housing (D) using the three screws/lock washers previously removed.



4. Temporarily hang fan on the tab on the mounting bracket (C) using one of the non-slotted holes in the canopy (B).



## WIRING

**⚠ WARNING:** To reduce the risk of fire, electrical shock, or personal injury, wire connectors provided with this fan are designed to accept only one 12-gauge house wire and two lead wires from the fan. If your house wire is larger than 12-gauge or there is more than one house wire to connect to the corresponding fan lead wires, consult an electrician for the proper size wire connectors to use.

**⚠ CAUTION:** Be sure outlet box is properly grounded and that a ground (green or bare) wire is present.

**⚠ WARNING:** If house wires are different colors than referred to in the following steps, stop immediately. A professional electrician is recommended to determine wiring.

**NOTE:** This fan is remote control adaptable (remote control not included). Please refer to instructions provided with the remote control before proceeding with these wiring instructions.

1. For each wire connection below, use one of the wire connectors (AA) provided, making sure to screw wire connector (AA) on in a clockwise direction.

Connect BLACK and BLUE wire from fan to BLACK wire from ceiling. Connect WHITE wire from fan to WHITE wire from ceiling. Connect GREEN wire from fan (on downrod (A) and mounting bracket (C)) to BARE/GREEN wire from ceiling.

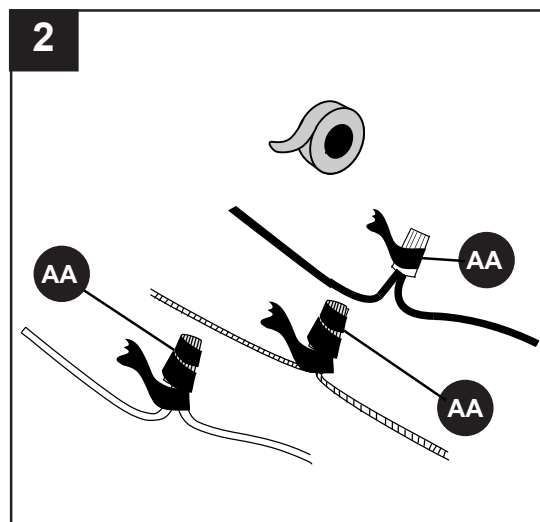
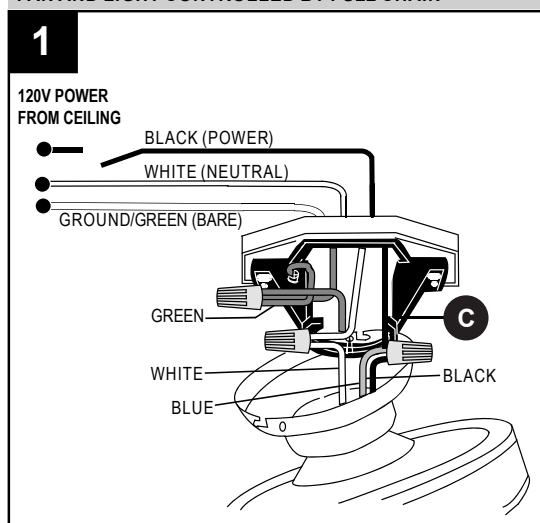
**NOTE:** BLACK wire is hot power for fan. BLUE wire is hot power for light kit (sold separately). WHITE wire is common for fan and light kit. BARE/GREEN wire is ground.

2. Wrap electrical tape (not included) around each individual wire connector (AA) down to the wire.

**⚠ WARNING:** Make sure no bare wire or wire strands are visible after making connections. Place GREEN and WHITE connections on opposite side of box from the BLACK and BLUE (if applicable) connections.

Turn spliced/taped wires upward and gently push wires and wire connectors (AA) into outlet box.

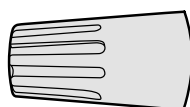
### FAN AND LIGHT CONTROLLED BY PULL CHAIN



### Hardware Used



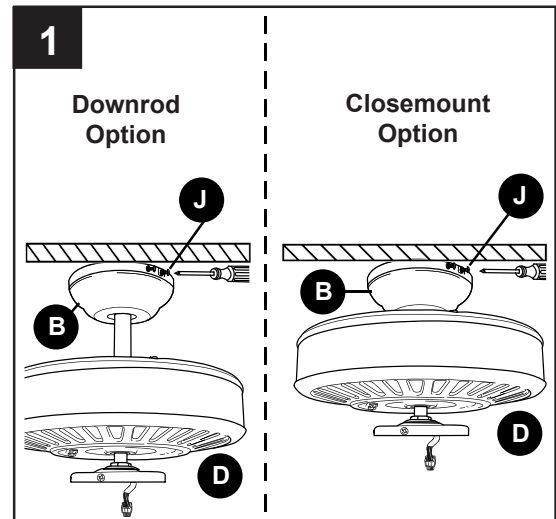
Wire Connector



x 4

## FINAL INSTALLATION

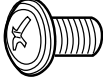

1. Temporarily lift canopy (B) to mounting bracket (C) to determine which two canopy mounting screws (J) in mounting bracket (C) align with slotted holes in canopy (B) and partially loosen these two canopy mounting screws (J). Remove the other two canopy mounting screws (J) along with star washers (E). Now, lift canopy (B) to mounting bracket (C) again, aligning slotted holes in canopy (B) with loosened canopy mounting screws (J) in mounting bracket (C). Twist canopy (B) clockwise to lock. Re-insert the two canopy mounting screws (J), along with star washers (E), that were just removed and tighten all canopy mounting screws (J) securely.

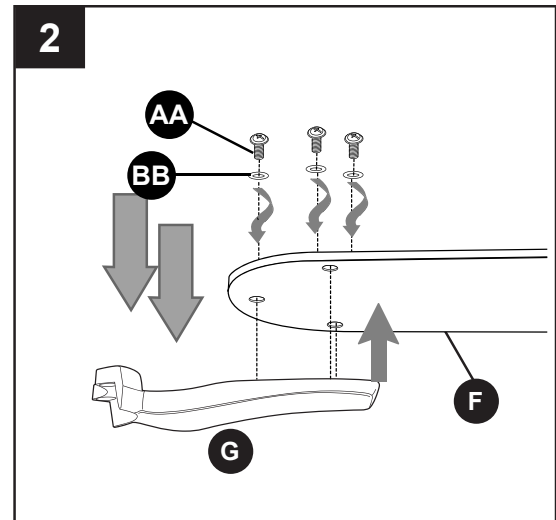


2. **⚠ DANGER:** To reduce the risk of serious bodily injury, DO NOT use power tools to assemble the blades (F). If screws are overtightened, blades (F) may crack and break. Partially insert three blade screws (AA) along with three fiber blade washers (BB) into holes in blade (F) to attach blade arm (G) to blade (F). Then, tighten each blade screw (AA) starting with the one in the middle.

Repeat for remaining blades (F) and blade arms (G).

### Hardware Used

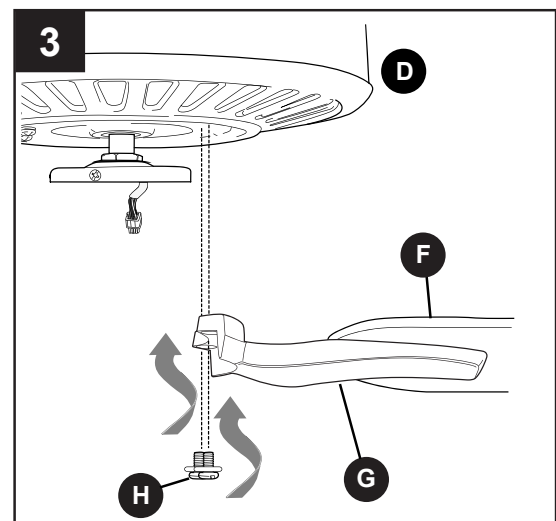
<b>AA</b>	Blade Screw		x 15
<b>BB</b>	Fiber Blade Washer		x 15



3. Locate previously removed motor screws/lock washers (H) (Step 5, page 7).

Insert two motor screws/lock washers (H) through one blade arm (G) to attach blade arm (G) to motor. Tighten motor screws/lock washers (H) securely. Repeat with remaining blade arms (G), making sure to completely secure each blade arm (G) before proceeding with the next.

**NOTE:** If you purchased a compatible light kit, refer to the instructions provided with the light kit to complete your installation.

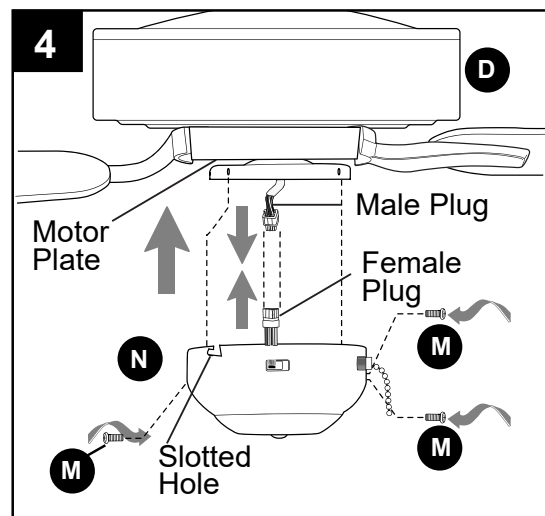


## FINAL INSTALLATION

- Partially loosen two switch housing screws (M) from motor plate on underside of the motor housing (D) and remove the other switch housing screw (M). Connect male plug from motor housing (D) to female plug from switch housing (N), matching up the colors on the plugs for the correct fit. Make sure plugs connect tightly.

Carefully arrange wires inside switch housing (N). Align slotted holes in switch housing (N) with loosened switch housing screws (M) in motor plate. Twist switch housing (N) to lock. Re-insert the previously removed switch housing screw (M) and tighten all switch housing screws (M) securely.

**Note:** Make sure to align gap on motor plate with the reverse switch on switch housing (N) for correct fit.



- Attach pull chain extension (DD) or a custom pull chain extension (not included) to the fan pull chain.

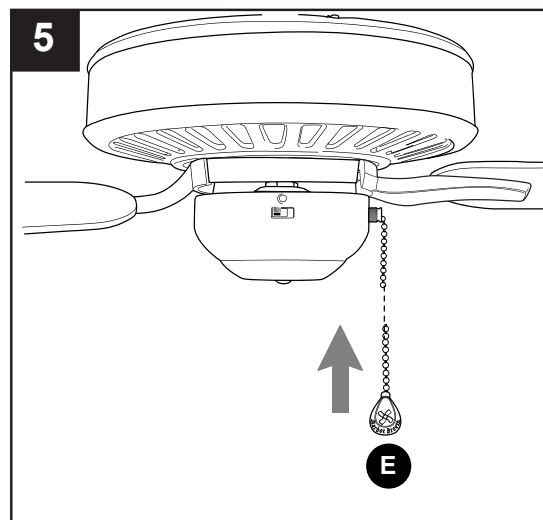
### Hardware Used

**DD**

Pull Chain Extension

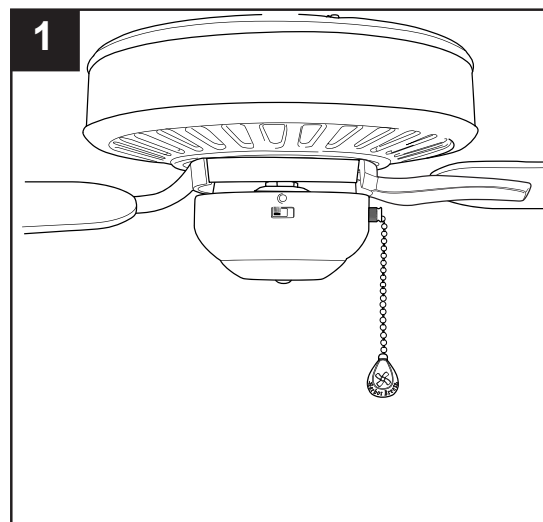


x 1



## OPERATING INSTRUCTIONS

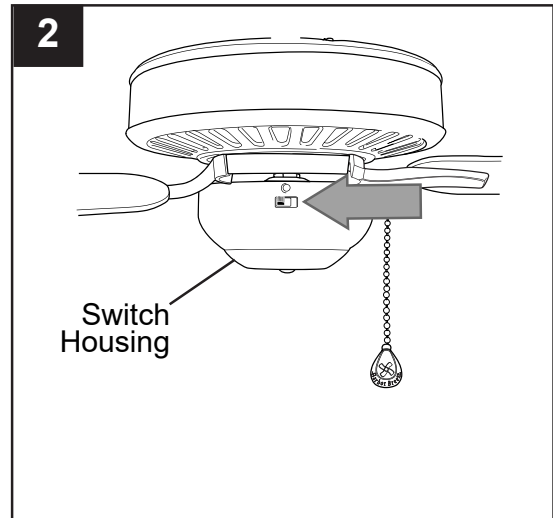
- The pull chain has four positions to control fan speed. One pull is HIGH, two is MEDIUM, three is LOW and four turns the fan OFF.



## OPERATING INSTRUCTIONS

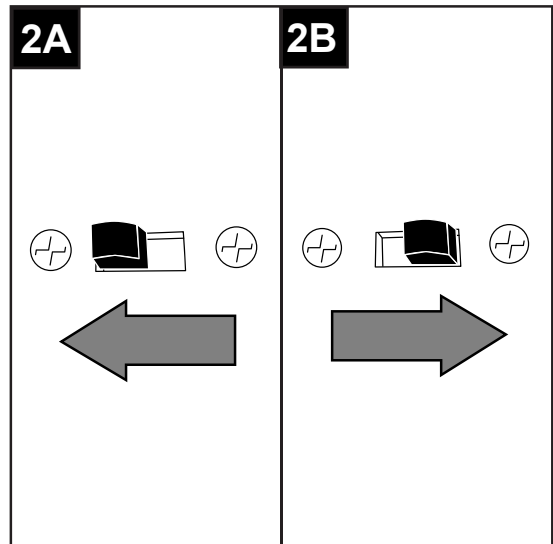
2. Use the fan reverse switch, located on the switch housing, to optimize your fan for seasonal performance. A ceiling fan will allow you to raise your thermostat setting in summer and lower your thermostat setting in winter without feeling a difference in your comfort.

**NOTE:** Wait for fan to stop before moving the reverse switch.

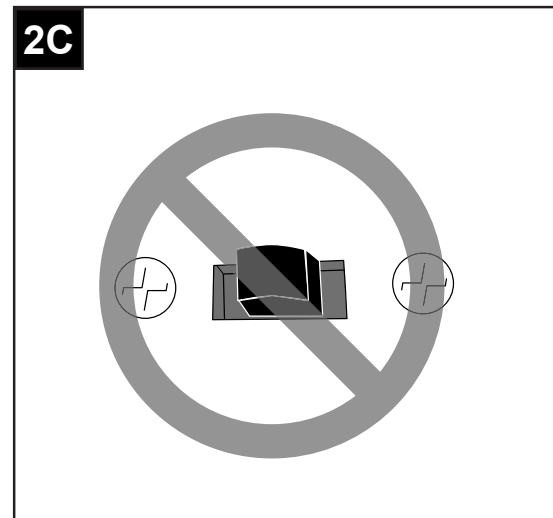


2A. In **warmer** weather, setting the reverse switch in the LEFT position will result in downward airflow creating a wind chill effect.

2B. In **cooler** weather, setting the reverse switch in the RIGHT position will result in upward airflow that can help move stagnant, hot air off the ceiling area.



2C. **IMPORTANT:** Reverse switch must be set either **completely** to the LEFT or **completely** to the RIGHT for fan to function. If the reverse switch is set in the middle position, fan will not operate.



## CARE AND MAINTENANCE

At least twice each year, lower canopy (B) to check downrod (A) assembly, and then tighten all screws on the fan. Clean motor housing (D) with only a soft brush or lint-free cloth to avoid scratching the finish. Clean blades (F) with a lint-free cloth. You may occasionally apply a light coat of furniture polish to wood blades for added protection.

**IMPORTANT:** Shut off main power supply before beginning any maintenance. Do not use water or a damp cloth to clean the ceiling fan.

## TROUBLESHOOTING

**⚠ WARNING:** Before beginning work, shut off the power supply to avoid electrical shock.

PROBLEM	POSSIBLE CAUSE	CORRECTIVE ACTION
Fan does not move.	<ol style="list-style-type: none"><li>1. Reverse switch not engaged.</li><li>2. Power is off or fuse is blown.</li><li>3. Faulty wire connection.</li></ol>	<ol style="list-style-type: none"><li>1. Push switch firmly either left or right.</li><li>2. Turn power on or check fuse.</li><li>3. Turn power off. Loosen canopy and check all connections.</li></ol>
Noisy operation.	<ol style="list-style-type: none"><li>1. Blades are loose.</li><li>2. Cracked blade.</li><li>3. Full range dimmer switch.</li><li>4. Fan is new.</li></ol>	<ol style="list-style-type: none"><li>1. Tighten all blade screws.</li><li>2. Replace blade.</li><li>3. Replace with an approved speed control device.</li><li>4. Allow fan a "break in" period of a few days, especially when running the fan at Medium and High speeds.</li></ol>
Excessive wobbling.	<ol style="list-style-type: none"><li>1. Blades are loose.</li><li>2. Blade arms incorrectly attached.</li><li>3. Unbalanced blades.</li><li>4. Fan not securely mounted.</li><li>5. Fan too close to vaulted ceiling.</li><li>6. Set screw(s) on motor housing yoke is (are) not tightened properly.</li><li>7. Set screw on hanging ball is not tightened properly.</li></ol>	<ol style="list-style-type: none"><li>1. Tighten all blade screws.</li><li>2. Re-install blade arms.</li><li>3. Switch one blade with a blade from the opposite side or use balancing kit (I).</li><li>4. Turn power off. Carefully loosen canopy and verify that mounting bracket is secure.</li><li>5. Use a longer downrod or move fan to another location.</li><li>6. Tighten yoke set screw(s) securely.</li><li>7. Carefully loosen and lower canopy and verify that set screw on hanging ball is tightened securely.</li></ol>

**NOTE:** A small amount of "wobble" is normal and should not be considered a defect.

## LIMITED LIFETIME WARRANTY

The distributor warrants this fan to be free from defects in workmanship and materials present at time of shipment from the factory for Lifetime limited from the date of purchase. This warranty applies only to the original purchaser. The distributor agrees to correct any defect at no charge or, at our option, replace the ceiling fan with a comparable or superior model.

To obtain warranty service, present a copy of your sales receipt as proof of purchase. All cost of removal and reinstallation are the express responsibility of the purchaser. Any damage to the ceiling fan by accident, misuse or improper installation, or by using parts not produced by the manufacturer of this fan or affixing accessories not produced by the manufacturer of this fan, are the purchaser's own responsibility. The distributor assumes no responsibility whatsoever for fan installation during the limited lifetime warranty. Any service performed by an unauthorized person will render the warranty invalid.

Due to varying climatic conditions, this warranty does not cover changes in brass finish, rusting, pitting, tarnishing, corroding or peeling. Brass finish fans maintain their beauty when protected from varying weather conditions. Any glass provided with this fan is not covered by the warranty.

Any replacement of defective parts for the ceiling fan must be reported within the first year from the date of purchase. For the balance of the warranty, call our customer service department (at **1-888-251-1003**) for return authorization and shipping instructions so that we may repair or replace the ceiling fan. Any fan or parts returned improperly packaged is/are the sole responsibility of the purchaser. There is no further express warranty. The distributor disclaims any and all implied warranties. The duration of any implied warranty which cannot be disclaimed is limited to the limited lifetime period as specified in our warranty. The distributor shall not be liable for incidental, consequential or special damages arising at or in connection with product use or performance except as may otherwise be accorded by law. This warranty gives you specific legal rights and you may also have other rights which vary from state to state. This warranty supersedes all prior warranties.

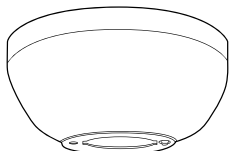
## REPLACEMENT PARTS LIST

For replacement parts, call our customer service department at **1-888-251-1003**, 8 a.m. - 8 p.m., EST, Monday - Sunday. You could also contact us at [partsplus@lowes.com](mailto:partsplus@lowes.com) or visit [www.lowespartsplus.com](http://www.lowespartsplus.com).

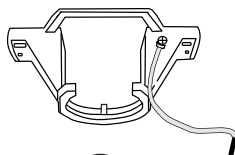
		#4057324	#4057325	#0901460
PART	DESCRIPTION	PART #	PART #	PART #
A	Downrod	4057324-A	4057325-A	0901460-A
B	Canopy	4057324-B	4057325-B	0901460-B
C	Mounting Bracket	4057324-C	4057325-C	0901460-C
F	Blade	4057324-F	4057325-F	0901460-F
G	Blade Arm	4057324-G	4057325-G	0901460-G



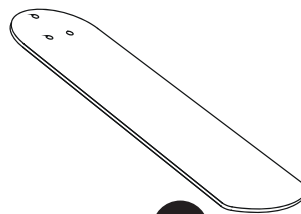
A



B



C



F



G