

Model #DV-1K516

Overall Dimension: 33" L x 20 7/8" W x 10" D

Features:

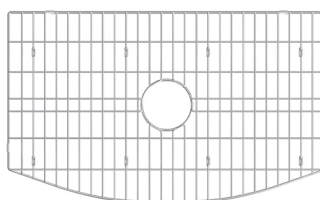
- The sink comes with a basket strainer and sink grid, which help to prevent debris and food scraps from going down the drain, and also protect the sink from scratches and damage.
- Easy to maintain and clean. It does not require any special care or cleaning products and can be cleaned with a mild soap and water.
- Fireclay is a highly durable and heat-resistant material that is resistant to chipping, cracking, and scratching.
- Smooth and non-porous surface means that it is highly resistant to bacteria growth and easy to keep hygienic.
- Equipped with a solidly constructed sink, which minimizes sound and vibration for quieter use.
- Curved edge adds a touch of elegance and sophistication to any kitchen.



Package Included:



● Farmhouse Kitchen Sink(DV-1K516)



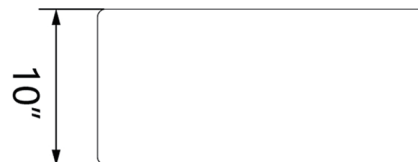
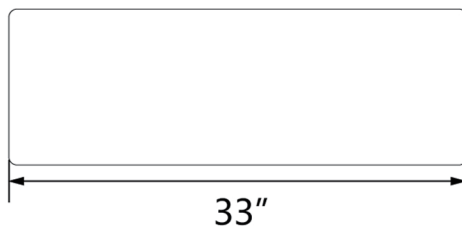
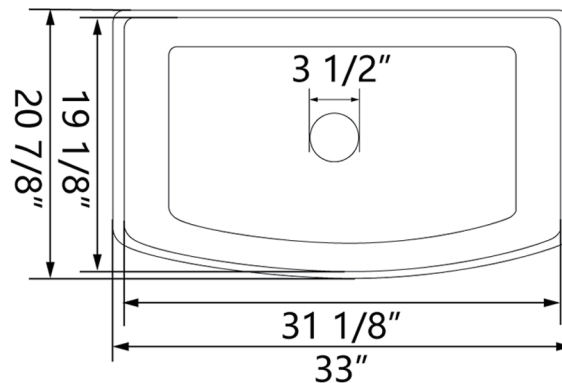
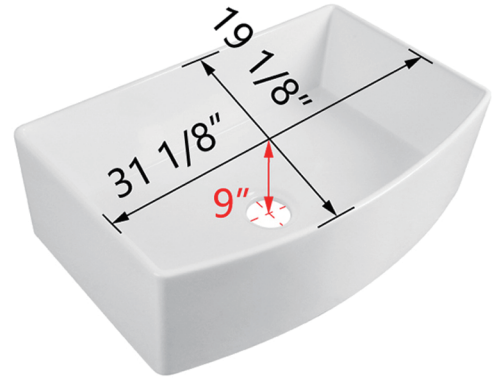
● Sink Grid(DV-K516G16)



● Basket Strainer(DV-1D905)

Technical Specifications:

- + Outer: 33" L x 20 7/8" W x 10" D
- + Inner: 31 1/8" L x 19 1/8" W x 9" D
- + Weight: 84.9 lbs
- + Drain: 3 1/2" diameter
- + Cabinet Size: 36" minimum



#DV-1K516

Sinks are individually handcrafted, so sizes may vary slightly.

1 Year Warranty

All DeerValley kitchen sinks come with our Warranty within one year.



TEL: (+1) 312-626-9466 | service@deervalleybath.com