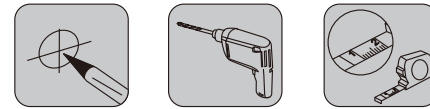
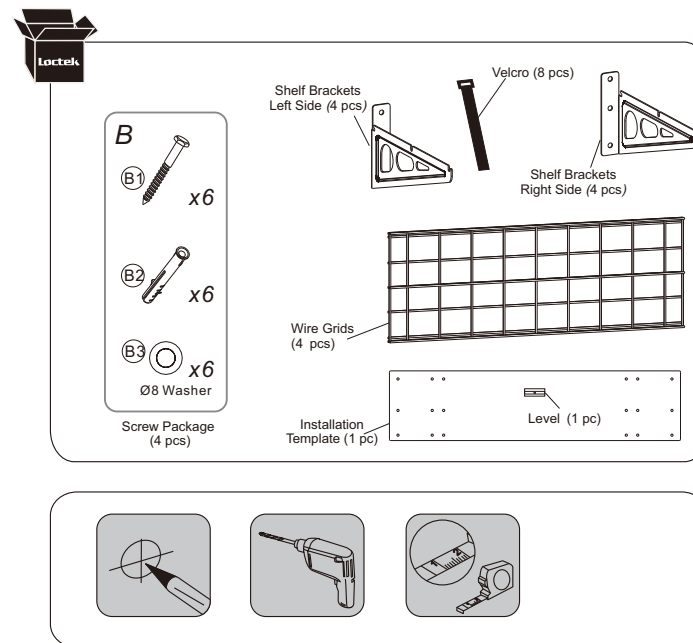
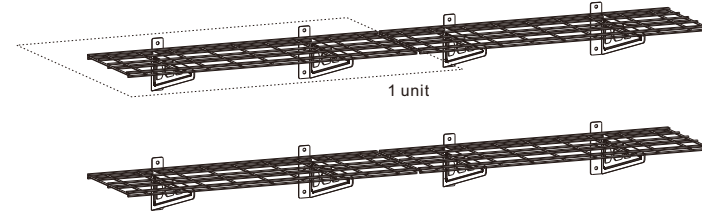


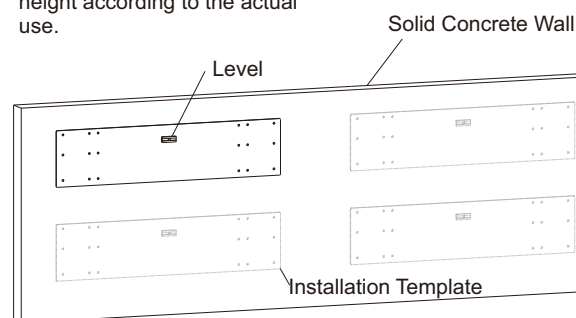
Item No. GR102-1X6 Installation Guide



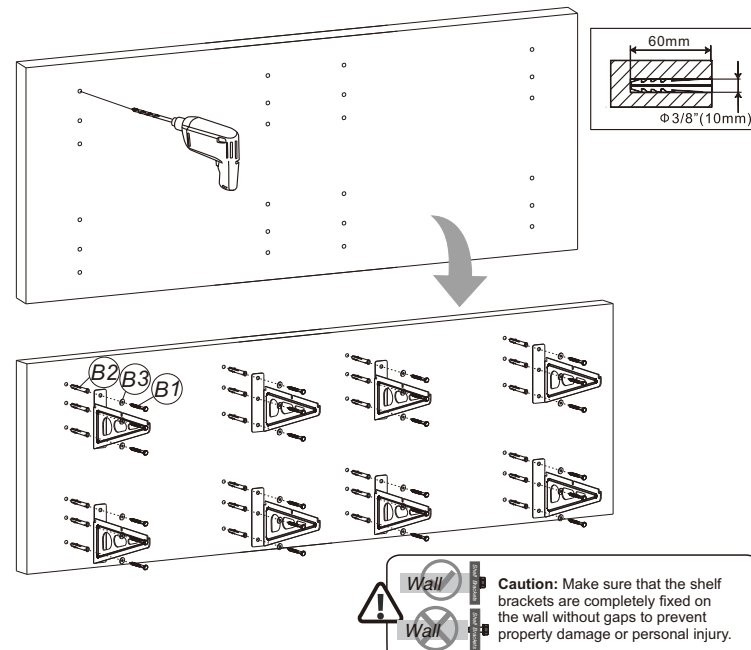
STEP1-A

Install Shelf Brackets into Solid Concrete Wall

Please select the appropriate height according to the actual use.



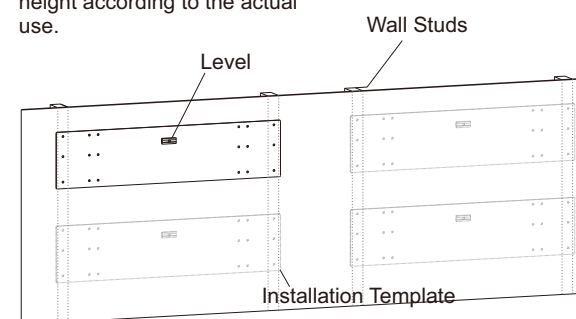
Decide the height and use template and level to mark the hole.



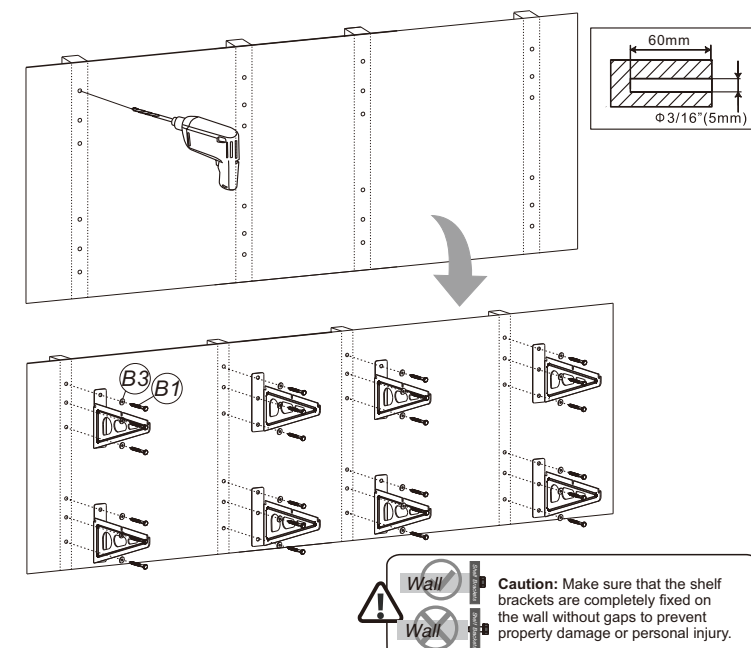
STEP1-B

Install Shelf Brackets into Wall Studs

Please select the appropriate height according to the actual use.



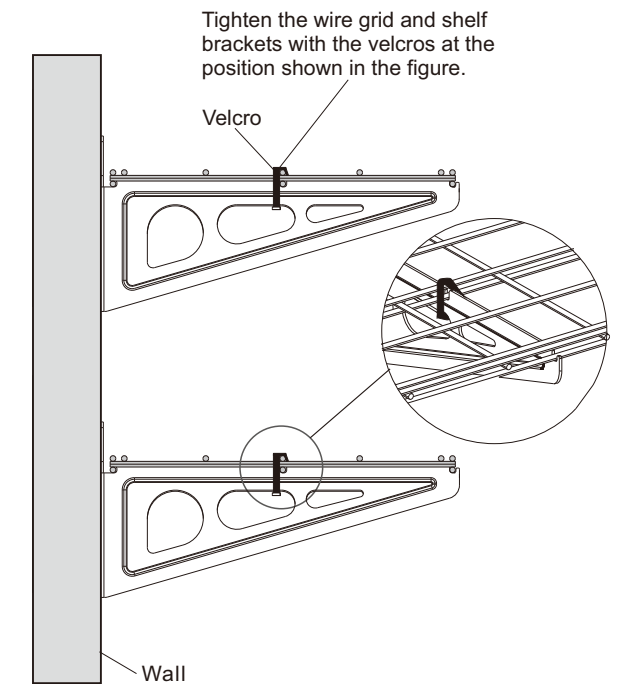
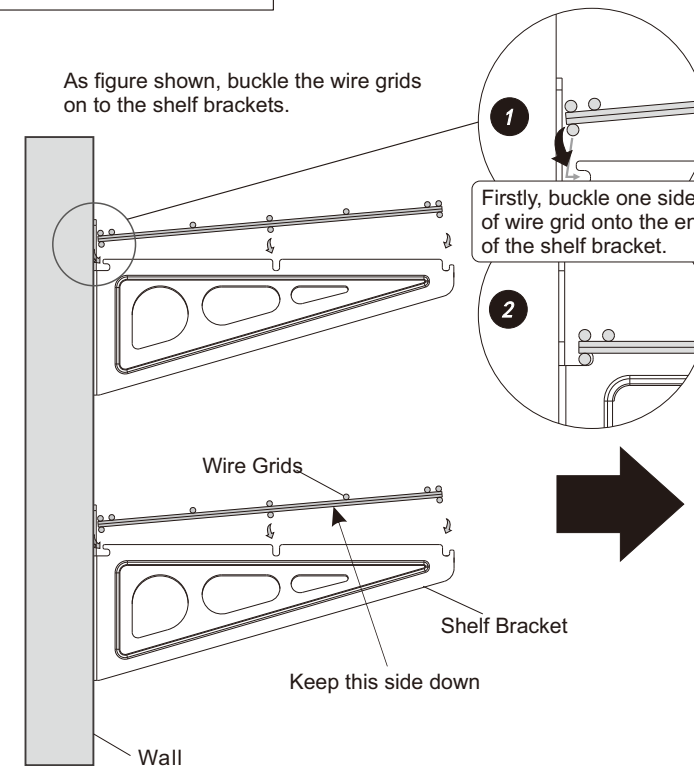
Decide the height and use template and level to mark the hole.



STEP2

Place and Attach Wire Grids

As figure shown, buckle the wire grids on to the shelf brackets.



CAUTION

This product contains small items that could be a choking hazard if swallowed. Keep these items away from young children.

- Make sure these instructions are read and completely understood before attempting installation. If you are unsure of any part of this installation, please contact a professional installer for assistance.
- The wall must be capable of supporting the combined weight of the garage rack and your stuff. Otherwise, the structure and weight capacity of the ceiling must be reinforced.
- Proper tools must be used. A minimum of two people are required for this installation. Failure to install properly can result in property damage or serious injury.
- Check joint parts every two months, making sure the screws have not loosened.
- This product is designed to be installed on a wooden wall or solid concrete ceiling. Before installation, make sure that the weight capacity of the wall will support the combined load of the rack and your stuff. Never exceed the maximum load capacity of the product 149.9 lbs (68 kg), or else it may result in product damage or physical injury.

Note: This product is intended for indoor use only. Use of this product outdoors could lead to product damage or physical injury.