



Guide Book



- R/C controls forward/backward and left/right, remote control priority
- Music
- Volume adjustment
- Power display
- Forward and backward
- High and low speed
- Wireless connection



 **WARNING:** The toy is to be assembled by an adult. In unassembled state contain potentially hazardous sharp points, sharp edges and small part,so please keep out of baby' s reach

 **Warning :** Not to be used in traffic.

Parts List:(Name and Quantity)

											
											
Name	A	B	C	D	E	F	G	H	I	J	
	Car body	Front and rear wheels	Driving wheel	Steering wheel	Drag bucket	Long fence	Short fence	Body connectors	Exhaust	Charging cover	
Quantity	1	4	2	1	1	2	1	1	1	1	
K	L	M	N	O	P	Q	R	S	T	U	V
Drag bucket base	Drive motor	Rear axle	Central axis	Seat	Handle	Link sticks	Screw	Wheel covers	Wrench	Remote control	Charger
1	2	1	1	1	2	1	7	6	2	1	1



Product Specifications:

Name	Specification
Battery	24V
Suitable age	36-96 months
Loading capacity	30kg
Product size	128*56*54cm
Speed	3-5 km/h
Charge/Use time	charge 8-12h, use 1-2h
Charger	Input: 100-240V Output: 24V
Remote control	AAA1.5V

The above parameters are selected by the customer, and the specific parameters shall be subject to the actual sample.

Function



Button function	⑥MP3 interface
① Horn	⑦Music Panel
② External socket	⑧Start button
③ Power display	⑨Light button
④ high and low speed	⑩Power pedal
⑤ Forward and backward	

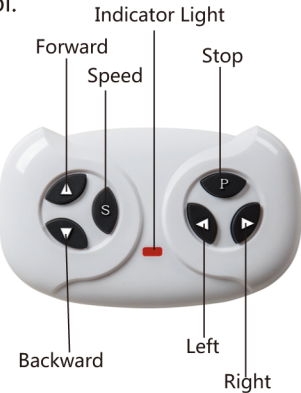
Remote control function and explanation

Do not swift forward/backward button when car is driving, or will damage the motor.

Remote control can be used normallywhen battery assembled.

Remote control should be usedunder adults' supervision.

Remote control is prior to man control.



How to adjust R/C frequency:

Long press forward and backward button for 3 seconds, and the speed indicator flashes. Then turn on the power, the speed indicator goes to long bright, means the connection successfully. If the speed indicator no response, means the connection failed. Replace the batteries and retry.

Remote control battery operation

Take off the battery cover. Put two AAA1.5V remote control battery in with right polarity.

New and used batteries can not be used mixed.

Do not insert batteries into wrong polarity, or will be short-circuited.

Non-rechargeable batteries can not be recharged. Exhausted batteries should be replaced by adults.

The exhausted battery must be handled and operated properly by adults only. Do not be played by children.

Installation Order Diagram

1.Middle wheel and body connections

The central shaft passes through the body, the two drive motors are fixed by the shaft, and the two intermediate wheel sheaths are on the motors and fixed with washers and nuts. Finally tighten with a wrench. Use four 4*10 screws to secure the body connection to the body. Finally, press the upper wheel cover.



3.Rear wheels

Put a spacer in the embossed position of the rear axle, then pass through the base of the body, put a gasket and put on the casing, then put a spacer at each end to cover the wheels, and then put the gasket and nut to fix it, and tighten it with a wrench. Press on the wheel cover.



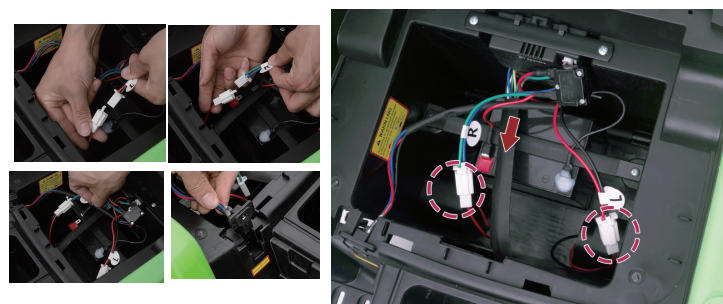
4.Installing a mop

The base of the body and the buckle of the body are pressed tightly, pay attention to the direction of the body, it is difficult to remove it if the direction is installed incorrectly, as shown in the figure, and finally the fence can be pressed according to the corresponding buckle card.



5.Connection of wires

The drive motor connection wire is plugged in, note that L connects the motor on the left and R connects the motor on the right. A red power cord can be plugged into the copper sheet at the red end of the battery. Snap the charger into the front body card slot.



6. Seats and handles

Before installing the seat, first clamp the charging hole cover at the charging hole position, then the front of the seat snap is snapped into the body hole, and then one rear end can be fixed with three 4*10 screws. The handle can be inserted into the jack as shown in the picture, and note that the beveled end is facing the front of the car.



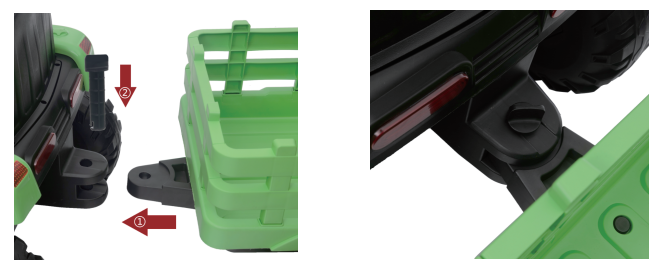
7. Steering wheel and exhaust pipes

The button at the lower end of the steering wheel is pressed and inserted into the steering wheel base on the body. The exhaust pipe is inserted into the two holes in the front of the car.



8.Connection between body and body

The body connection at the rear of the body is inserted into the body and fixed with the fixing part.



Warnings

For children's safety, please read these carefully.
Assembly and adjustment must be done by adults, keep children away.
Keep children under 36 months away from small parts.
Safe belt is a must when children playing. Do not be closeto fire.
Adult must teach how to play it and never leave children alone for playing.
Do not stand up or play when children are stepping on foot pedal.
Battery must be charged by adults only. Please charge it first before use.
Keep children away from plastic bag, or suffocation may occur.
Only use spare parts which provided by manufacturer.
Charger is not a toy for playing.
Maximum loading capacity is 30KG. Do not overload.
Suitable age: 36-96 months.

Safety use

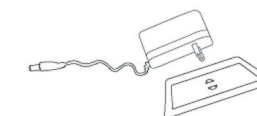
Do not play in the street, road, slope or ditch.
Do not change the line or add electric device to the car.
Play the car in the dry area, not wet. Keep away from fire, or may damage the line.
One or two riders one time only. Do not overload.
Maximum capacity is 30KG.
Turn power off if no use. If long time no use, unplug battery line.
Check battery, charger and other spare parts regularly.
If any problem, please fix it before playing.

Charging notification

For the first use, please charge 8-12 hours, or will damage the battery.
Plug charger DC line into charge hole first, then plug charger into socket. Car can not be played when it charging.
Every time it charged, do not charge more than 20 hours.
It is normal that charger and battery warm (under 60°) during charging.
Do not charge if plug is wet, or will occur short-circuited.
Only use charger provided by manufacturer, or will damage charger and battery or occur short-circuited.
If long time no use, please charge 1 time per month at least.

Charging steps are as follows:

- Step 1: The charging hole is under the seat.
- Step 2: Put the charger plug into the plug hole.
- Step 3: Connect the charger to the power socket.



Warning: Car must be charged by adults only. Car is useless during charging

Maintenance and Service

Check battery, charger and other spare parts regularly. If any problem, please fix it before playing.
• Use lubricating oil to care iron parts. Keep car away from fire and sunshine. Park it on the even place, not reversal or gradient.
• Park it indoor and cover it with waterproof cloth.
• Keep car away from fire, like stove or heater, or plastic may melt.
Keep away from flammable things, or may occur fire accident.
• Charge it after use and must be done by adults only. If long time no use, please charge it 1 time per month, in order to maintain battery.
• Clean the vehicle with a dry cloth only. Do not use chemical solvent to wipe plastic parts. Do not wash it with water or play it when raining or snowing. Water will damage motor, electric system or battery.
• Please turn power off after each use.
• Only use charger provided by manufacturer.
• Do not change car's structure or electric line. Check job request some skills or under specialist's guidance.