



## LIMITED LIFETIME WARRANTY

Compass Manufacturing International warrants to the original consumer purchaser that the faucet be free from defects in material and workmanship for as long as the original consumer purchaser owns the home in which the faucet was first installed.

In the event that Freendo Faucets are used in a Commercial Application, this warranty is limited for a period of 5 years, unless otherwise specifically stated in the catalog and/or price book.

Compass Manufacturing International will replace, free of charge, during the applicable warranty period, any part or finish that proves defective in material and/or workmanship under normal installation, use and service. This warranty shall not apply to goods which have been subject to accidents, negligence or improper installation. Compass Manufacturing International will not be liable for other damages or losses, including, but not limited to: labor charges and/or damages incurred in installation, repair or replacement as well as any other kind of loss or damage. Proof of purchase from the original consumer purchaser must be made available for all warranty claims.

Compass Manufacturing International recommends using a professional plumber for all installation and repair. Compass Manufacturing International will, at its discretion, provide new or equivalent replacement parts for any product that proves to be defective under normal usage and service. Replacement parts may be obtained by emailing the address below, calling the number below or by writing to:

### Compass Manufacturing International

Freendo Product Service

6702 Enterprise Drive

Louisville, KY 40214

800.626.3525

[warranty@cmiproduct.com](mailto:warranty@cmiproduct.com)

Revised 7/17/18

[warranty@cmiproduct.com](mailto:warranty@cmiproduct.com)

© Compass Manufacturing International

800.626.3525



Model No. : 192-6407 Polished Chrome  
192-6408 Brushed Nickel *Spotless PVD*  
192-6409 Oil-Rubbed Bronze



## CARDANIA ROMAN TUB FAUCET 3 Hole Installation



## Helpful Information

### Helpful Tools

#### Tools:

Gather the necessary tools as shown below to complete the installation of this faucet. Some may not be needed depending on the model of faucet you are installing.



Plumber's Putty  
and/or Silicone



Flashlight



Basin Wrench



Safety Glasses



Screwdriver



Pliers



Channel Locks



Adjustable Wrench

## 5

## Trouble-Shooting

If you're followed the instructions carefully and your faucet still does not work properly, take these corrective steps.

Problem	Cause	Action
The water will not turn off completely.	Remove Handles (#5) and Cartridges (#25 Hot or #38 Cold) check to see if the ceramic disk is dirty or permanently damaged.	Install the Cartridge (#25 Hot or #38 Cold) or Replace them. Re-install the Handles (#5).

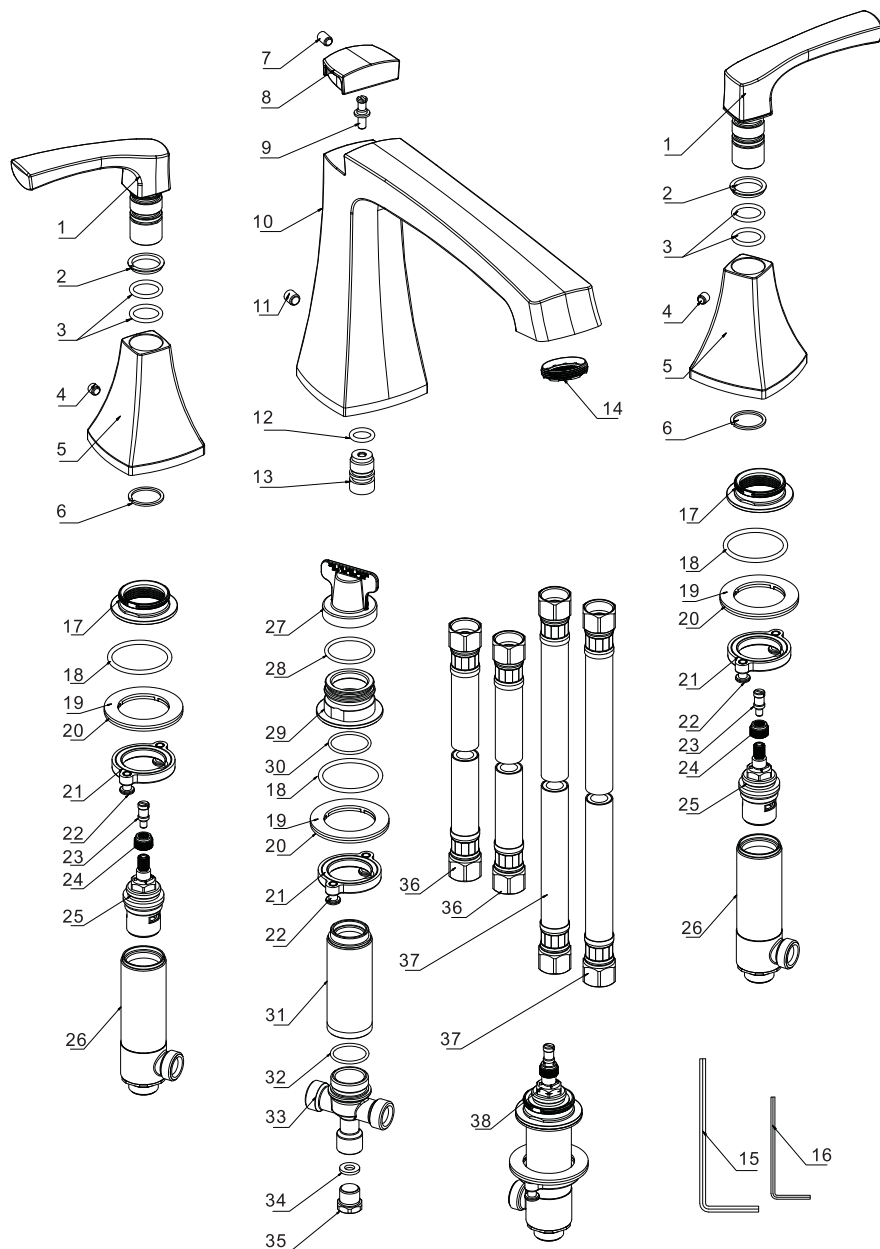
## Parts List

No.	Part Name
1	Handle Wheel
2	O-ring
3	O-ring
4	Screw
5	Handle Body
6	Handle Connector
7	Screw
8	Knob
9	Knob Connector
10	Spout
11	Screw
12	O-ring
13	Stopper
14	Aerator
15	Allen Key
16	Allen Key
17	Cartridge Locknut
18	O-ring

No.	Part Name
19	Washer
20	Clamp
21	Nut
22	Screw
23	Set Screw
24	Handle Adapter
25	Hot Cartridge
26	Brass Valve Body
27	Cap
28	O-ring
29	Spout Locknut
30	O-ring
31	Shank
32	O-ring
33	Spout Brass Tee
34	Washer
35	Stopper
36	Connect Hoses
37	Connect Hoses
38	Cold Cartridge

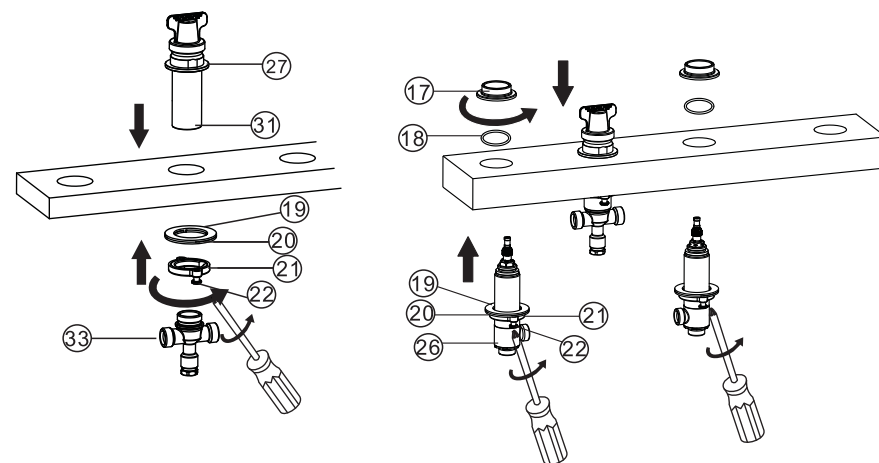
# 4

## Parts Diagram



# 1

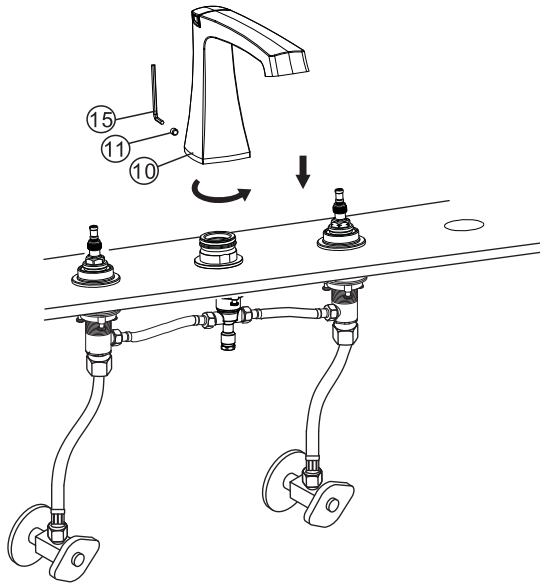
## Faucet Installation



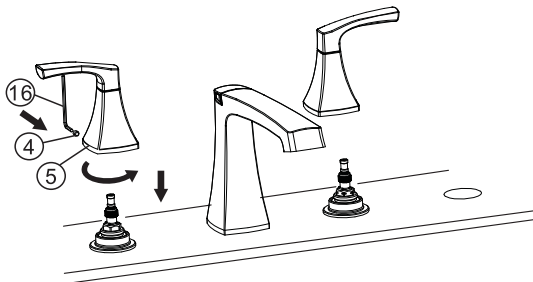
1. Shut off water supply and drain lines. Clean the surface area thoroughly. Make sure mounting area is clean and dry.
2. Position the shank (31) on countertop. From underneath the countertop, assemble washer (19), clamp (20), nut (21) and screw (22), and tighten with the screwdriver (But do not over tighten). Then connect the spout brass tee (33) to the shank (31).
3. Position the brass valve body (26) to the left of the shank (31) on the countertop. From underneath the countertop, assemble the washer (19), clamp (20), nut (21), and screw (22), then tighten with the screwdriver. (But do not over tighten). Then attach the cartridge locknut (17), tighten the locknut (17) by hand and secure the screws with the screwdriver. Repeat the steps for the other side.

## 2

### Faucet Installation



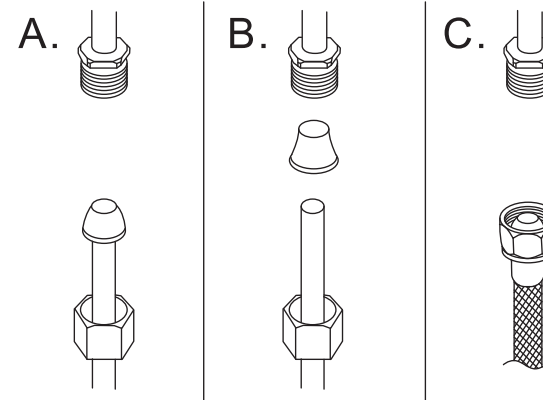
1. Attach the spout (10) to the spout valve in a counter-clockwise direction, install the set screw (11) using the allen key (15).



2. Attach the handle body (5) on the valve in a counter-clockwise direction, install the set screw (4) using the allen key (16). Repeat on the other side.

## 3

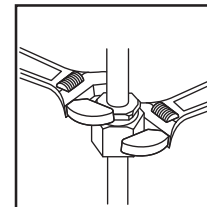
### Configuration



**Warning:**  
The supply valves and supply lines are not included.

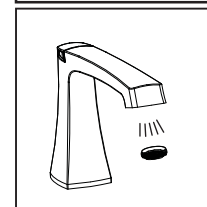
Connect to water supply lines with either:

- (A) 3/8 " O.D. Copper tubing (ball nose risers with the coupling nuts or;
- (B) 3/8 " Copper tubing (no ball) with supplied tube head interior connector or;
- (C) IPS faucet connectors (1/2 ")



#### Important:

Tighten connection with two wrenches to prevent damage to tube body. Be careful not to bend the stem as this will void the product warranty.



#### Important:

Remove the aerator (14). Turn on both the hot and cold water, let it run for one minute. This will help clear the lines of any debris that might clog the system. Re-install the aerator (14).

**Test for leaks .**