

Havenworth

MINKA
CEILING FAN CO.

READ AND SAVE ALL INSTRUCTIONS 60" CEILING FAN



INSTRUCTION MANUAL WARRANTY CERTIFICATE

This product is protected by United States Federal and/or State Law, including Patent, Trademark and/or Copyright laws. Manual design and all elements of manual design are protected by U.S. Federal and/or State Law, including Patent, Trademark and/or Copyright laws.

MINKA
CEILING FAN CO.

1151 W. Bradford Court, Corona, CA 92882 • For Customer Assistance Call: 1-800-307-3267



WARRANTY

The Minka warranty is for one (1) year from the date of purchase from an authorized Minka dealer. This warranty is only valid to the original purchaser or user against all defects (light bulbs excluded) for one (1) full year. Additionally, Minka warrants only for the lifetime of the Minka ceiling fan (excluding wall controls and electrical components), to the original purchaser or user.

- The warranty is void with the use of any non-Minka electrical devices; e.g., wall controls or electrical dimmer switches, etc.
- The warranty is void once the original purchaser or user ceases to own the fan or the fan is moved from its original point of installation.
- The warranty is void with the use of any hanger bracket (non-Minka or non-fan specific) other than the hanger bracket supplied in the box.
- The warranty is void if installed in an environment other than its intended use (Indoor fans installed outdoors or in a covered outdoor patio area, or subjected to environmental conditions: salt air, humidity, direct sun exposure, etc.). Outdoor finishes are specifically excluded from the terms of this warranty since they are subject to environmental and maintenance damages beyond our control.

WARRANTY SERVICE INFORMATION

To obtain warranty service during the warranty period, the purchaser should return the fan with the original sales receipt to the original place of purchase. Replacement is subject to availability of the same model. This is a limited warranty; the original purchaser or user is responsible for the cost of removal and re-installation of repaired or replacement product. Outdoor finishes are specifically excluded from the terms of this warranty since they are subject to environmental and maintenance damages beyond our control.

Fan warranty registration should be mailed as addressed on the warranty card.

Date Purchased _____ Store Purchased _____ Model Number 84016,84017

Serial Number _____

CONTENTS

SAFETY RULES.....	4	INSTALLING THE MOUNTING PLATE.....	10
PACKAGE CONTENTS.....	5	INSTALLING THE LIGHT KIT.....	11
INSTALLING THE FAN.....	6	INSTALLING THE SHADE	12
HANGING THE FAN.....	7	OPERATING THE REMOTE CONTROL.....	13
ELECTRICAL CONNECTIONS.....	8	CARE OF YOUR FAN.....	15
FINISHING THE INSTALLATION.....	9	TROUBLESHOOTING.....	16
ATTACHING THE FAN BLADES.....	10	SPECIFICATIONS.....	17

SAFETY RULES

1. To reduce the risk of electric shock, ensure electricity has been turned off at the circuit breaker or fuse box before beginning.
2. All wiring must be in accordance with the National Electrical Code “ANSI/NFPA 70-1999” and local electrical codes. Electrical installation should be performed by a qualified licensed electrician.
3. The outlet box and support structure must be securely mounted and capable of reliably supporting a minimum of 35 lbs. Use only UL-listed outlet boxes marked “FOR FAN SUPPORT.”
4. The fan must be mounted with a minimum of 7 ft. clearance from the trailing edge of the blades to the floor.
5. Avoid placing objects in the path of the blades.
6. To avoid personal injury or damage to the fan and other items, be cautious when working around or cleaning the fan.
7. Do not use water or detergents when cleaning the fan or fan blades. A dry dust cloth or lightly dampened cloth will be suitable for most cleaning.
8. After making electrical connections, spliced conductors should be turned upward and pushed carefully up into the outlet box. The wires should be spread apart with the grounded conductor and the equipment-grounding conductor on one side of the outlet box and ungrounded conductor on the other side of the outlet box.
9. All setscrews must be checked and retightened where necessary before installation.
10. Turn the fan off and wait for the blades to stop completely before performing any maintenance or cleaning.

NOTE: The important safeguards and instructions appearing in this manual are not meant to cover all possible conditions and situations that may occur. It must be understood that common sense, caution and care are factors which cannot be built into this product. These factors must be supplied by the person (s) installing, caring for and operating the unit.

WARNING

TO REDUCE THE RISK OF FIRE, ELECTRIC SHOCK, OR OTHER PERSONAL INJURY, MOUNT FAN ONLY ON AN OUTLET BOX OR SUPPORTING SYSTEM MARKED ACCEPTABLE FOR FAN SUPPORT OF 35 LBS (15.9 KG) OR MORE NOT LESS AND USE MOUNTING SCREWS PROVIDED WITH THE OUTLET BOX. MOST OUTLET BOXES COMMONLY USED FOR THE SUPPORT OF LIGHTING FIXTURES ARE NOT ACCEPTABLE FOR FAN SUPPORT AND MAY NEED TO BE REPLACED. CONSULT A QUALIFIED ELECTRICIAN IF IN DOUBT.

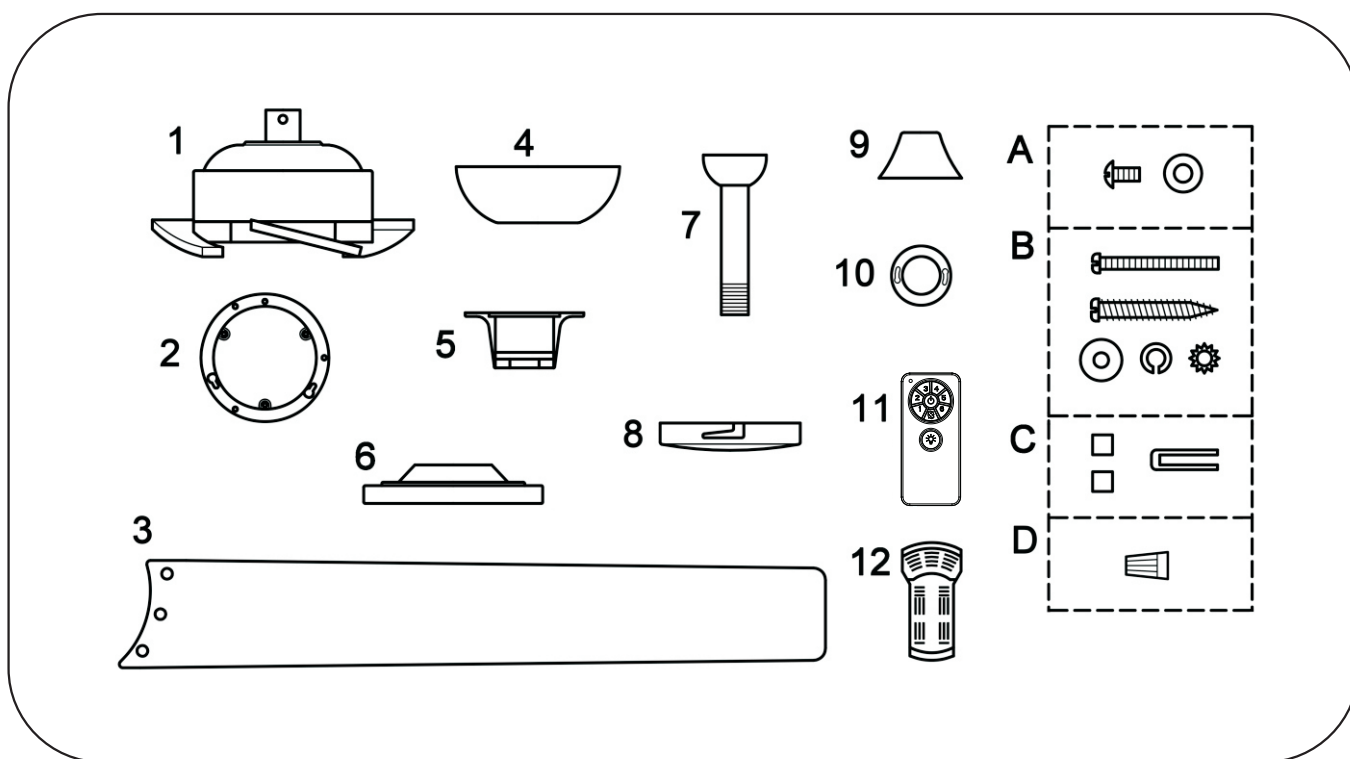
TO REDUCE THE RISK OF PERSONAL INJURY, DO NOT BEND THE BLADE HOLDERS WHILE INSTALLING, BALANCING THE BLADES OR CLEANING THE FAN. DO NOT INSERT FOREIGN OBJECTS BETWEEN ROTATING FAN BLADES.

TO REDUCE THE RISK OF FIRE OR ELECTRIC SHOCK, THIS FAN ONLY CAN USE DC8 SOLID-STATE SPEED CONTROL WITH RC120-HL REMOTE CONTROL ONLY.

PACKAGE CONTENTS

Unpack your fan and check the contents. You should have the following items:

- | | |
|----------------------------------|---|
| 1. Fan body | 12. receiver(8 pcs wire nuts) |
| 2. 20W LED Light | |
| 3. Fan blade(5 pcs) | A. Blade attachment hardware |
| 4. canopy | 3/16x6mm screws(16pcs) |
| 5. hanger bracket | ■5*14*1mm flat washer(16pcs) |
| 6. light plate | B. Mounting hardware |
| 7. downrod assembly | #8-32*38mm screw(2pcs) |
| 8. light shade | #10x38mm wood screw(2 pcs) |
| 9. coupling cover | ■5*14*1mm flat washer(2 pcs) |
| 10. canopy cover | 5/32(■4.4*9.4*0.5-1.0mm-10) star washer(2pcs) |
| 11. remote control with holder | 3/16(■5.2*8.4*1.0mm) spring washer(2pcs) |
| and 2 mounting screws(1.5V*2 pcs | C. Balance kit |
| batteries included) | D. wire nut(3pcs) |



INSTALLING THE FAN

Tools Required: Phillips screw driver; slotted screw driver; step-ladder; wire cutters; electrical tape.

MOUNTING OPTIONS

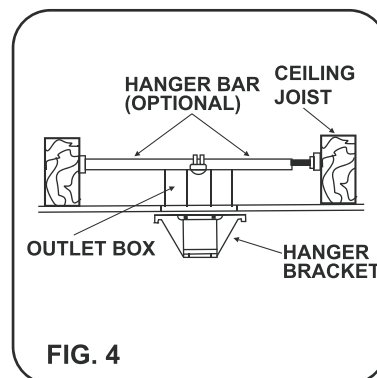
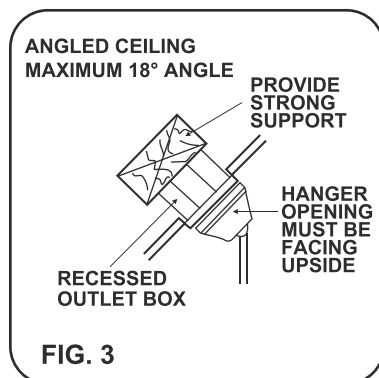
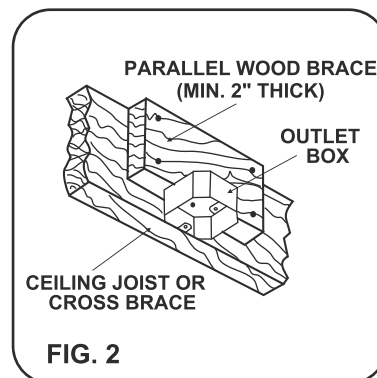
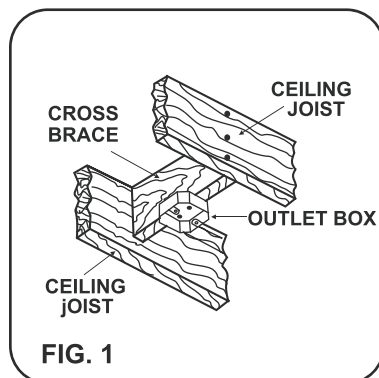
If there isn't an existing mounting box, then read the following instructions. Disconnect the power by removing fuses or turning off circuit breakers.

Secure the outlet box directly to the building structure. Use appropriate fasteners and building materials. The outlet box and its support must be able to fully support the moving weight of the fan (at least 35 lbs.). Use a UL Listed metal outlet box. Do not use a plastic outlet box.

Figure 1, 2 and 3 are examples of different ways to mount the outlet box.

Note: You may need a longer downrod to maintain proper blade clearance when installing on a steep, sloped ceiling. Longer downrods are available from your Minka dealer.

To hang your fan where there is an existing fixture but no ceiling joist, you may need to install a hanger bar as shown in Fig. 4 (available at your Minka dealer).



HANGING THE FAN

WARNING: All of the parts, hardware and components such as the hanger bracket and hanger ball have been provided for your safety and the proper installation of your new ceiling fan. The use of other parts, hardware or components not supplied by Minka with the fan will void the Minka Warranty.

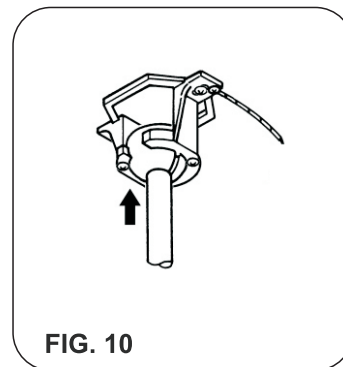
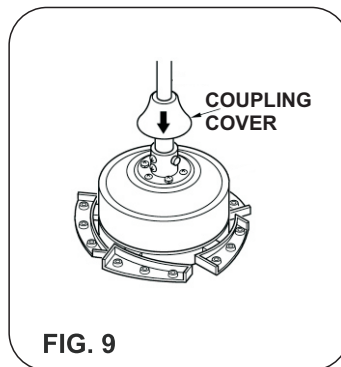
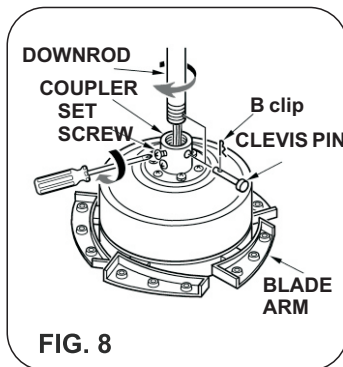
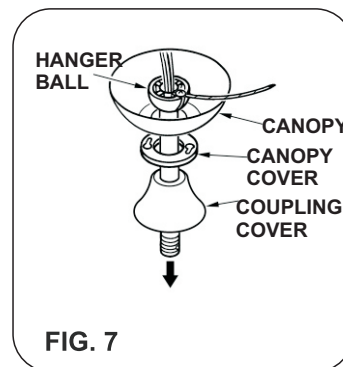
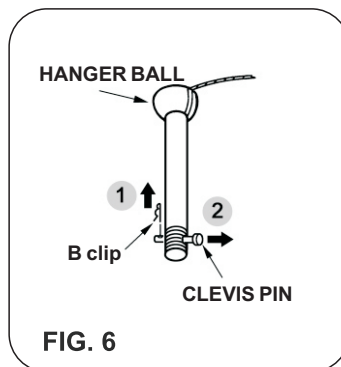
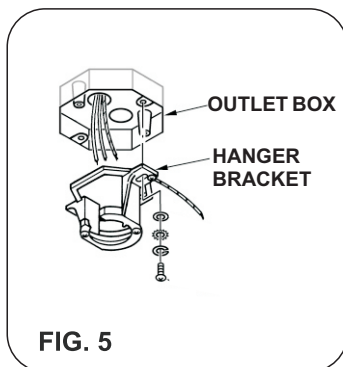
REMEMBER to turn off the power. Follow the steps below to hang your fan properly:

Step 1. Secure the Hanger Bracket to the ceiling outlet box using the screws provided with your outlet box in conjunction. (Fig. 5)

Step 2: Remove the hitch pin and lock pin from downrod assembly. (Fig.6)

Step 3. Carefully feed fan wires up through the downrod. Thread Downrod into the Coupling until the holes are lined up and secure with the Lock Pin and Hitch Pin previously removed, tighten Set Screws. (Fig.7&Fig.8&Fig.9)

Step 4. Lift the Motor Assembly and place the Hanger Ball into the Hanger Bracket. Rotate the Motor Assembly as needed until the check groove from the Hanger Ball rests firmly over the registration tab from the Hanger Bracket. (Fig. 10)



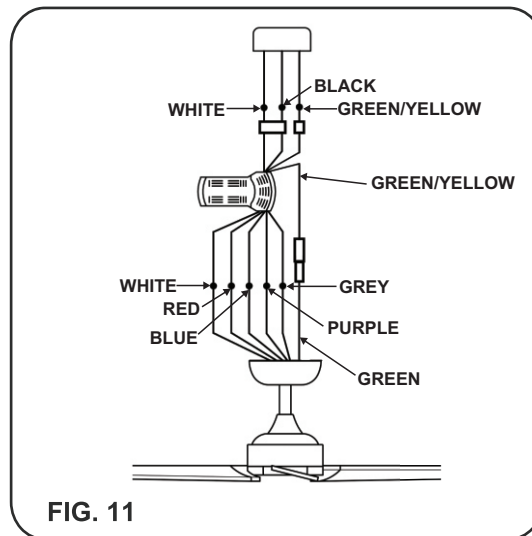
ELECTRICAL CONNECTIONS

WARNING: To avoid possible electrical shock be sure electricity is turned off at the main fuse or breaker box before wiring.

Step 1. Motor to House Supply Wires Electrical Connections: Connect the WHITE wire (Neutral) from the outlet box to the WHITE wire marked "AC in N" from the motor. Connect the BLACK wire (Hot) from the outlet box to the BLACK wire marked "AC in L" from the motor. Secure all wire connections with the plastic wire nuts provided. (Fig. 11)

Step 2. If your outlet box has a GROUND wire (Green or Bare Copper) connect this wire to the Hanger Ball and Hanger Bracket Ground wires. If your outlet box does not have a Ground Wire, then connect the Hanger Ball and Hanger Bracket Ground Wires together. Secure wire connection with the plastic wire nut provided. (Fig. 11)

After all splices are made, check to make sure there are no loose strands. As an additional precaution we suggest to secure the plastic wire connectors to the wires with electrical tape.



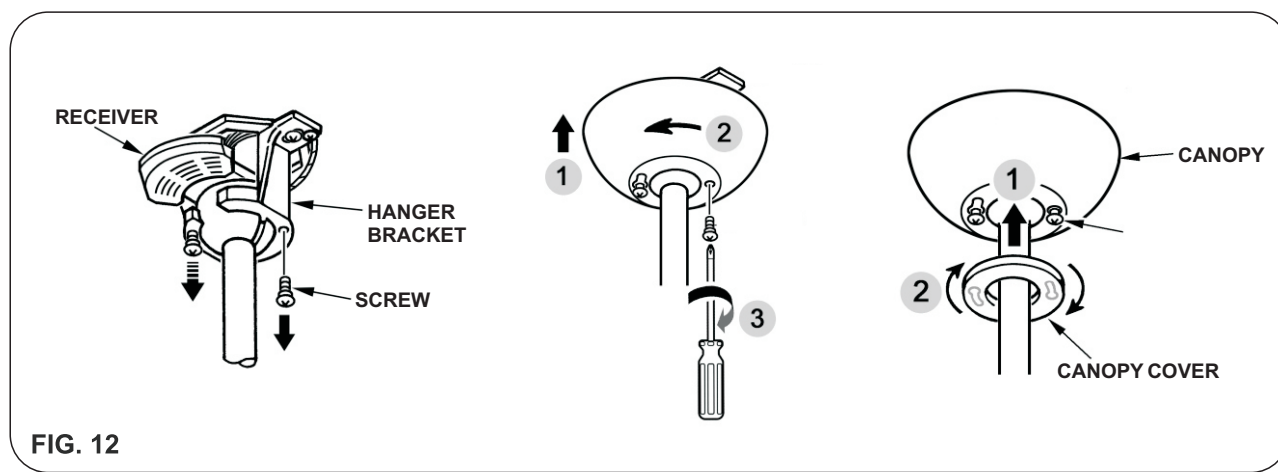
FINISHING THE INSTALLATION

Step 1. Remove 1 of the 2 screws from the bottom of the hanger bracket and loosen the other one half a turn from the screw head.

Step 2. Slide the canopy up towards the hanger bracket and place the key hole on the canopy over the screw on the hanger bracket, turn canopy until it locks in place at the narrow section of the key holes.

Step 3. Align the circular hole on canopy with the remaining hole on the hanger bracket, secure by tightening the two set screws.

Note: Adjust the canopy screws as necessary until the canopy and canopy cover are snug.



INSTALLING THE LED LIGHT KIT

NOTE: Before starting installation, make sure power is turned off at the circuit breaker.

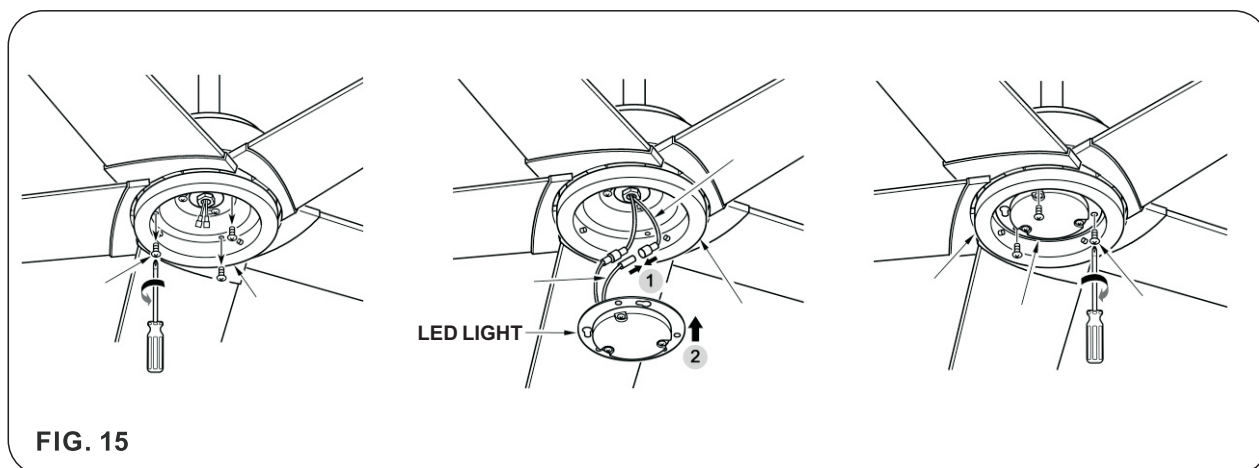
CAUTION: The light source is designed for this specific application and can overheat if serviced by untrained personnel. If any servicing is required, the product should be returned to an authorized service facility for examination or repair.

Step 1. Remove the 3 screws from the **light kit** plate and keep it for future use.

Step 2. While holding the LED light kit under the fan motor assembly, make the 2-pin wire connections:

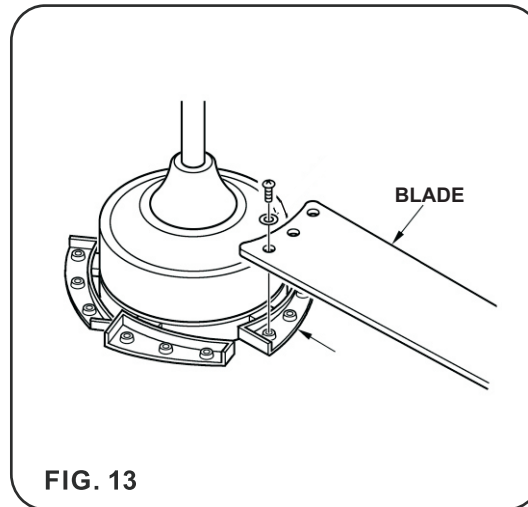
- White to white
- Blue to Blue

Step 3. Screw back the 3 previously removed screws and tighten the light kit.



ATTACHING THE FAN BLADES

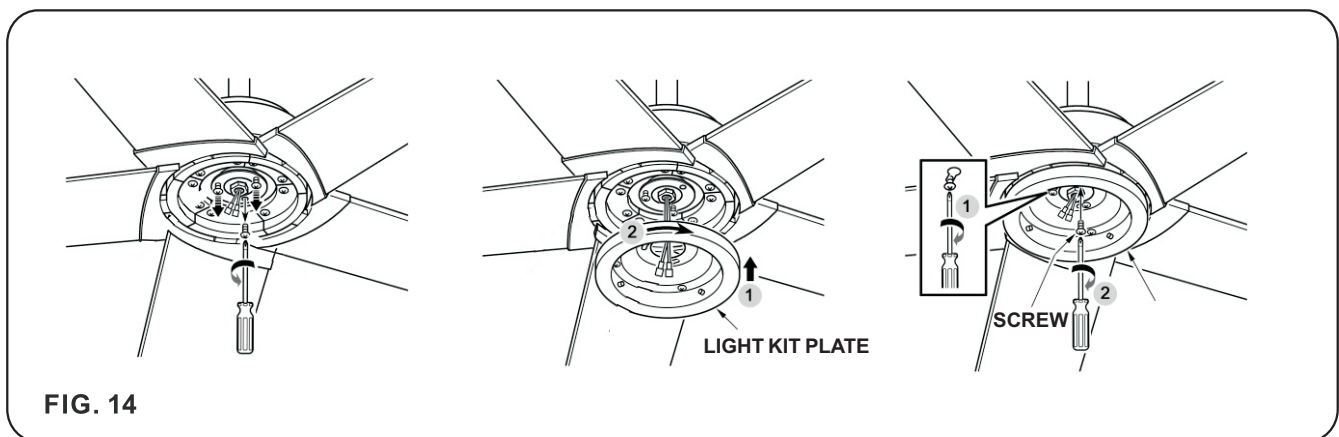
Step 1. Attach the fan blades to the blade holders using the screws and fiber washers provided, tighten screws and fiber washers securely. Repeat process with other blades. (Fig. 13)



INSTALLING THE LIGHT KIT PLATE

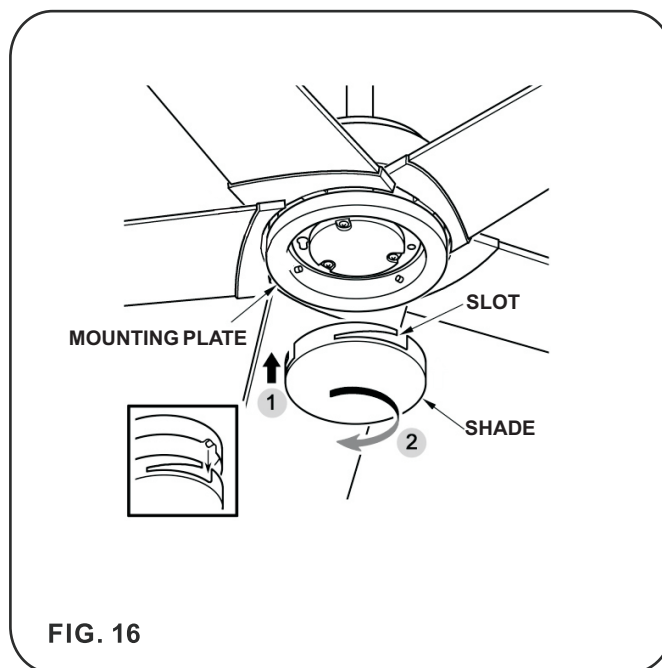
Step 1. Remove 1 of 3 screws from the mounting ring and loosen the other 2 screws. (Do not remove)

Step 2. Place the key holes from the **light kit plate** over the 2 screws previously loosened from the mounting ring, turn **light kit plate** until it locks in place at the narrow section of the key holes. Secure by tightening the 2 screws previously loosened and the one previously removed. (Fig. 14)



INSTALLING THE SHADE

Raise shade up against light kit plate and secure it to the fan by turning the shade clockwise until snug. DO NOT OVERTIGHTEN. (Fig. 16)



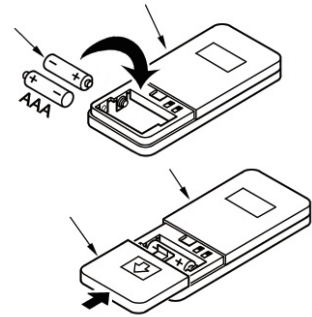
REMOTE CONTROL SETTING AND OPERATION

TRANSMITTER OPERATION

Remove the battery cover from the remote control transmitter and install batteries, Replace the cover.

Note : Use 2 1.5V/AAA batteries (included).

Note : If not using for long period of time, remove battery to prevent damage to remote transmitter, and store the remote transmitter away from excess heat or humidity.

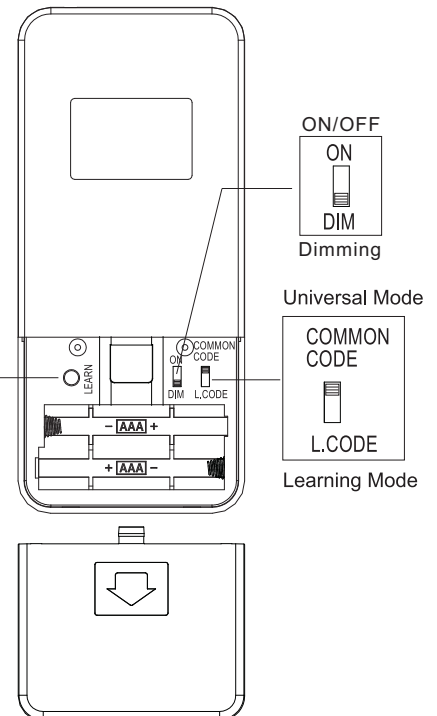


DIMMING / NON DIMMING SETTING

The "DIM" selection is the light dimmable selection , the light will cycle from bright to dim to bright until button is released. The "ON" selection is the light ON/OFF only (non dimming function). Light will maintain last setting when turned off.

Note: The remote control is pre-set with dimming function at factory,

Note: Ensure electricity is turned off before installing the receiver (Refer to the ceiling fan instructions)



UNIVERSAL MODE AND LEARNING MODE

There is a "Universal Mode" and "Learning Mode" with the remote control. When selecting "Universal Mode", simply place dip (code) switch to the UP Position (COMMON CODE). There will be no need to pair your fan and remote control.

Please Note: Under the universal mode setting, your fan can be controlled by other transmitters also using the "Universal Mode" with no need to pair them.

To prevent any possible Interference with other fans in your home. Minka recommends the use of the "Learning Mode" setting by placing the dip (code) switch to the LOWER position (L. CODE) and follow the steps below.

Learn Mode setting: Within 60 second of restoring power source to your fan, press and hold the "LEARN" button for at least 3 seconds.

If the fan is installed with light, the light will blink 3 times.

This will indicate the process is complete and your fan is ready for use.

For fans without light, check operation using remote transmitter.

Note: Power must be off for a minimum of 10 seconds, before restoring power to attempt the Learn Mode setting procedure.

Note:

If Multiple fans require to be controlled by a single remote transmitter Minka Recommends

Using the Learn Mode setting. Power to both fans will need to be restored at the same time and

Press the Learn button on the remote control so that both desired fans can receive the remotes signal simultaneously.

RECEIVER PROTECTIVE FUNCTIONS

Lock protection- The DC motor has a built-in safety feature against blade or motor obstruction during operation. Should something obstruct the fan blades or motor, the motor will keep trying to run for 5 times and then stop operation after about 60 seconds of interruption. Please remove obstacles and reset. To reset, turn the fan off with remote transmitter and then turn the fan on. Or, you may turn the power off for 15 seconds. Then turn the power back on, and then turn the fan on.


Over load protection (current limit)- The device limits the maximum current output from the receiver/drive when the fan or light load is increased abnormally. The fan will shut off if over lamped.


Remote Control Fan Speed And Light Functions.

Fan speed

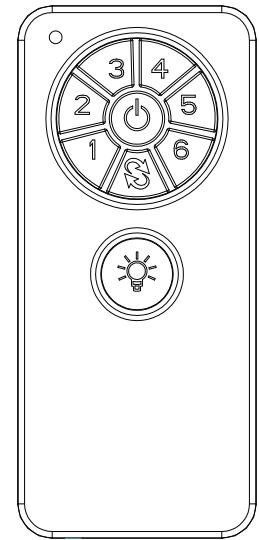
1 = minimum speed	2 = low speed
3 = medium low speed	4 = medium speed
5 = medium high speed	6 = high speed

 This button turns the fan off.

 Forward Reverse button- This button controls the direction of the fan rotation. Press once to change direction of the fan rotation. Fan must be running to reverse. (Note: It can take a few seconds to change direction once button has been pushed.)

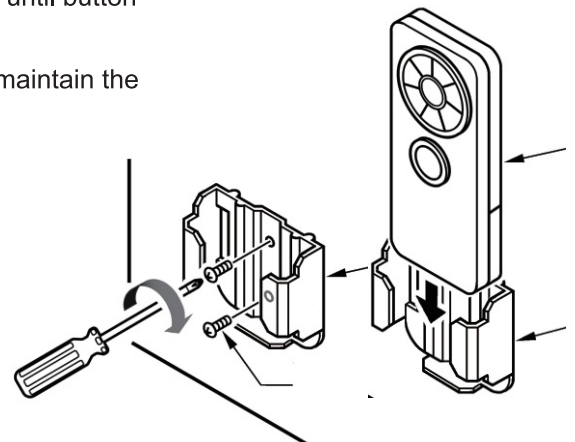
 Light button-Press this button to turn light on or off. To dim light (Setting at "DIM" position), hold down the button, the light will cycle from bright to dim to bright until button is released.

Note : This remote control has an auto resume function, the fan and light will maintain the last setting when power is turned off.



WALL MOUNT CRADLE INSTALLATION

Install Transmitter wall mount cradle with 2 screws provided.



THIS DEVICE COMPLIES WITH PART 15 OF THE FCC RULES OPERATION IS SUBJECT TO THE FOLLOWING TWO CONDITIONS. (1)THIS DEVICE MAY NOT CAUSE HARMFUL INTERFERENCE AND (2) THIS DEVICE MUST ACCEPT ANY INTERFERENCE RECEIVED, INCLUDING INTERFERENCE THAT MAY CAUSE UNDESIRE OPERATION.

NOTE:

1. When powering on after installation, the fan may start automatically due to factory preset settings.
2. If fan or light isn't working, reset power (turn the power off for at least 10 seconds and then turn the power back on) and redo the learn function setting.
3. If there are multiple fans in the same room, when setting, please make sure the power supply for the setting fan is independant of the other fans.
4. When turning the fan on or operating the forward/reverse function, it is normal for the fan to rotate and run on both directions, for approximately 1 minute and then stop.
5. The controller is capable to recording 2 frequency setting, to avoid any frequency issues please ensure both frequencies have been set.

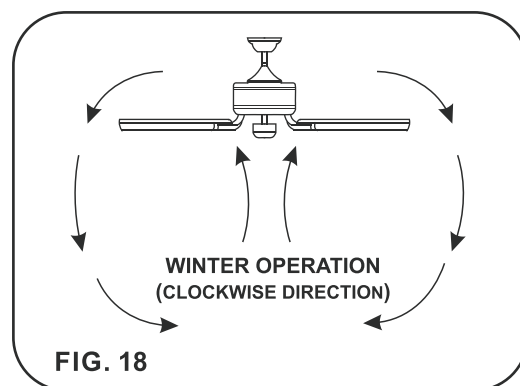
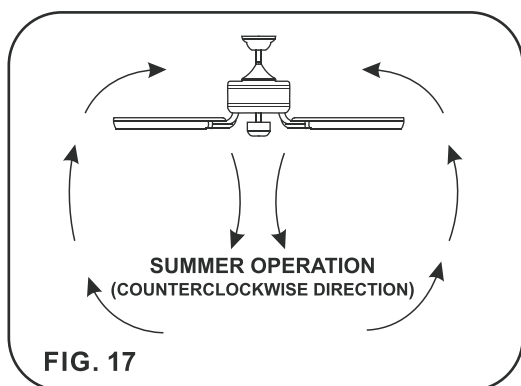
Speed settings for warm or cold weather depend on factors such as room size, ceiling height and number of fans.

Warm Weather (forward)

A **DOWNWARD** airflow creates a cooling effect as shown in Figure 17. This allows you to set your air conditioner on a warmer setting without affecting your comfort.

Cool Weather (Reverse)

An **UPWARD** airflow moves warmer air off the ceiling area as shown in Figure 18. This allows you to set your heating unit on a cooler setting without affecting your comfort.



CARE OF YOUR FAN

Here are some suggestions to help maintain your fan.

1. Because of the fan's natural movement some connections may become loose. Check the support connections, brackets and blade attachments twice a year. Make sure they are secure. (It is not necessary to remove fan from the ceiling).
2. Clean your fan periodically to help maintain its new appearance over the year. **CAUTION:** many common household cleaning products contain chemicals that could damage the finish of your fan. Use only a soft lint free cloth and soapy water.
3. If your fan is provided with wood veneer blades; you can apply a light coat of furniture polish for additional protection and enhanced beauty. Cover small scratches with a light application of shoe polish.
4. Use a lint free lightly damp cloth or duster to remove dust from the blades.
5. There is no need to oil your fan. The motor has permanently lubricated bearings.
6. If your fan is provided with glass shades, clean with lukewarm soapy water and a soft cloth or sponge. **DO NOT IMMERSE GLASS SHADES IN HOT WATER. DO NOT PUT GLASS SHADES INTO AN AUTOMATIC DISHWASHER.**

WARNING!

MAKE SURE THE POWER IS OFF AT THE ELECTRICAL PANEL BOX BEFORE YOU ATTEMPT ANY REPAIRS. REFER TO THE SECTION, "ELECTRICAL CONNECTIONS".

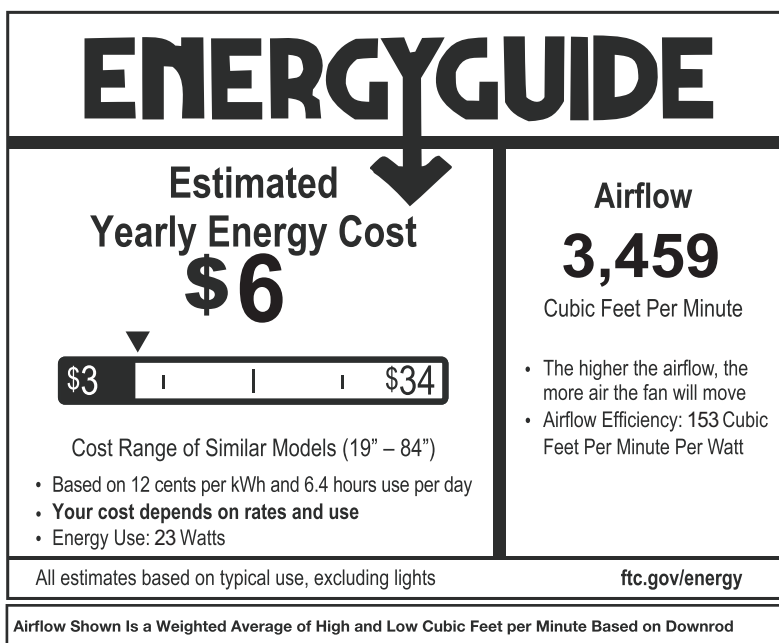
TROUBLESHOOTING

SYMPTOM	SOLUTION
Fan will not start	<ul style="list-style-type: none"> • Check to make sure the wall switch is turned on. • Check circuit fuses or breakers. • Caution! Make sure the power is turned off before performing the following steps. • Remove canopy and check wire connections. • Check wall control transmitter connections (if applicable). • Note: Fan must be installed at a maximum distance of 40 feet from the transmitting unit for proper signal transmission between the transmitting unit and the fan's receiving unit.
Fan Sounds Noisy	<ul style="list-style-type: none"> • Allow a 24-hour "break in" period. Most noises associated with a new fan will go away during this time. Make sure the screws that attach the fan blade holder to the motor hub is tight. • Make sure outlet box is secured to building structure, if necessary use the wood screws provided to further secure outlet box to joist. • Make sure hanger bracket is secure to the outlet box, screws are tight.
Fan Wobble	<ul style="list-style-type: none"> • NOTE: All blade sets are grouped by weight. Because wood and plastic blades vary in density, the fan may wobble even though blades are matched. • Make sure outlet box is secured to building structure, if necessary use the wood screws provided to further secure outlet box to joist. • Make sure hanger bracket is secure to the outlet box, screws are tight. • If a Balancing kit is provided follow the instructions included with the balancing kit to help correct any excessive wobble.
Fans/Light Turn On and Off Unexpectedly	<ul style="list-style-type: none"> • This is caused by interference, Please see "Frequency interference" for steps to change the frequency.
Frequency Interference	<ol style="list-style-type: none"> 1. Turn the power off to your ceiling fan. There is a "Universal Mode" and "Learning Mode" with the remote control. When selecting "Universal Mode", simply place dip (code) switch to the UP Position (COMMON CODE). There will be no need to pair your fan and remote control. Please Note: Under the universal mode setting, your fan can be controlled by other transmitters also using the "Universal Mode" with no need to pair them. To prevent any possible Interference with other fans in your home. Minka recommends the use of the "Learning Mode" setting by placing the dip (code) switch to the LOWER position (L. CODE) and follow the steps below. Learn Mode setting: Within 60 second of restoring power source to your fan, press and hold the "LEARN" button for at least 3 seconds. If the fan is installed with light, the light will blink 3 times. This will indicate the process is complete and your fan is ready for use. For fans without light, check operation using remote transmitter. Note: Power must be off for a minimum of 10 seconds, before restoring power to attempt the Learn Mode setting procedure. Note: If Multiple fans require to be controlled by a single remote transmitter Minka Recommends Using the Learn Mode setting. Power to both fans will need to be restored at the same time and Press the Learn button on the remote control so that both desired fans can receive the remotes signal simultaneously.

SPECIFICATIONS

Fan Size	Speed	Volts	Amps	Watts	RPM	CFM	N.W.	G.W.	C.F.
60"	Low	120	0.09	1.65	29	501	6.5	8.5	2.04'
	High	120	0.54	35.75	150	6068	kgs	kgs	

These are typical readings. Your actual fan may vary. They do not include amps and wattage used by the light(s).



For any additional information about your *Minka Ceiling fan*, please write to:

MINKA
CEILING FAN CO.

1151 W. Bradford Court, Corona, CA 92882 • For Customer Assistance Call: 1-800-307-3267

Supplier's Declaration of Conformity 47 CFR§2.1077 compliance Information

Unique Identifier

Trade name: MINKA CEILING FAN CO.

Model Number: 1461037(84016,84017),1461046(84011,84012,84013)

Responsible Party-U.S Contact Information

Minka Group Inc.

1151 West Bradford Court.

Corona, CA 92882

Tel. 951-735-9220

FCC Compliance Statement: products subject to Part 15

This device complies with Part 15 of the FCC rules. Operation is subject to the following two conditions: (1) This device may not cause harmful interference, and (2) This device must accept any interference received, including interference that may cause undesired operation.

Warning: Changes or modification to this unit not expressly approved by the party responsible for compliance could void the user's authority to operate the equipment.

Note: This equipment has been tested and found to be comply with the limits for a Class B digital device, pursuant to part 15 of the FCC rules. These limits are designed to provide reasonable protection against harmful interference in a residential installation. This equipment generates, uses and can radiate radio frequency energy and, if not installed and used in accordance with the instructions, may cause harmful interference to radio communications. However, there is not guarantee that interference will not occur in a particular installation. If this equipment does cause harmful interference to radio or television reception, which can be determined by turning the equipment off and on, the use is encouraged to try and correct the interference by one or more of the following measures: Reorient or relocate the receiving antenna. Increase the separation between the equipment and receiver. Connect the equipment into an outlet on a circuit different from that to which the receiver is connected. Consult the dealer or an experienced radio/TV technician for help.

