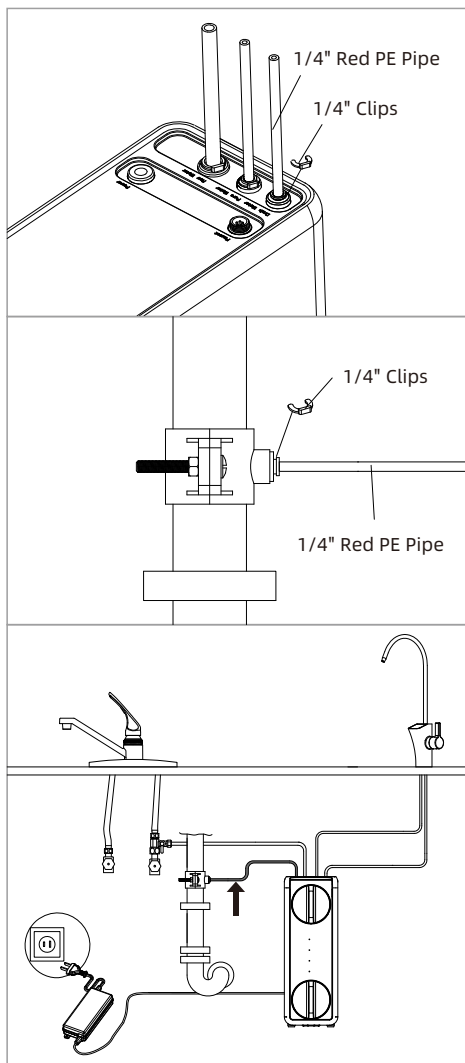


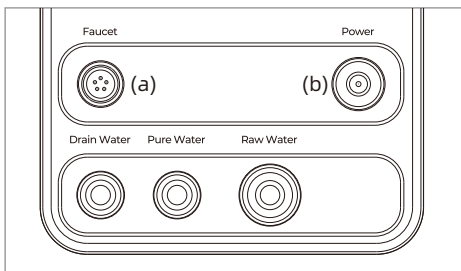
(d) Connect the Drain Water and the Drain Connector

Insert one end of the 1/4" Red PE pipe into the Drain Water hole. Use a 1/4" clip to secure the pipe.

Insert another end of the 1/4" Red PE pipe into the Drain connection. Secure the pipe with a 1/4" clip.



## 3.7 Connecting the Power Cord



**(a) Connect the faucet power cord to the system**

Insert the power cord attached to the faucet into the "FAUCET" connector at the top of the system and tighten the nut.

**(b) Connect Power Adapter**

Insert the DC head of the power adapter into the "POWER" port at the top of the system.



**NOTICE**

Please do not connect the power socket now.

## 4 Operation

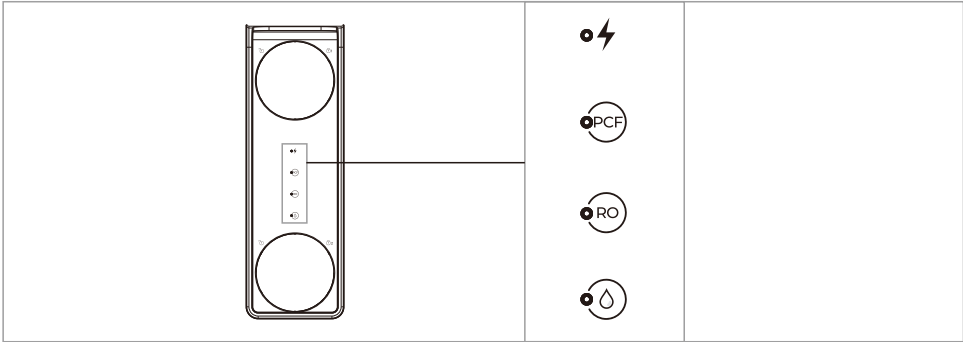
### 4.1 Before the first-time use

- (A) Turn on the cold water supply and ensure the supply adapter valve is open.
- (B) Connect the system with power. You will hear a long beep, and all indicators will light up for 3s. The system will automatically flush for 30s. Wipe all the joints and connections with tissue to check for leakage. If the tissue stays dry, the system is installed correctly.
- (C) After the auto-flush is completed, turn on the faucet to allow water to run for 30 minutes to flush the air and carbon fines through the filters. After that, the system is ready, and you can start to consume the pure water.



**NOTICE**  
Initially, the water may appear cloudy. This is a result of air trapped in the RO filter. It is not harmful and will disappear in a matter of minutes. It may take up to a week after installing a new RO filter for the trapped air to dissipate.

4.2 User interface



Indicator	Indication	Status
 Power indicator	Constant blue light	Power on
	Off	Power Off
 PCF lifetime indicator & Reset button	Constant blue light	Lifetime > 95%
	Flash blue light	0 < Lifetime ≤ 5%
	Off	Lifetime = 0
 RO lifetime indicator & Reset button	Constant blue light	Lifetime > 95%
	Flash blue light	0 < Lifetime ≤ 5%
	Off	Lifetime = 0
 Flush indicator & Flush button	Constant blue light	Power on
	Flash blue light	Flush mode
	Off	Power off

Touch button

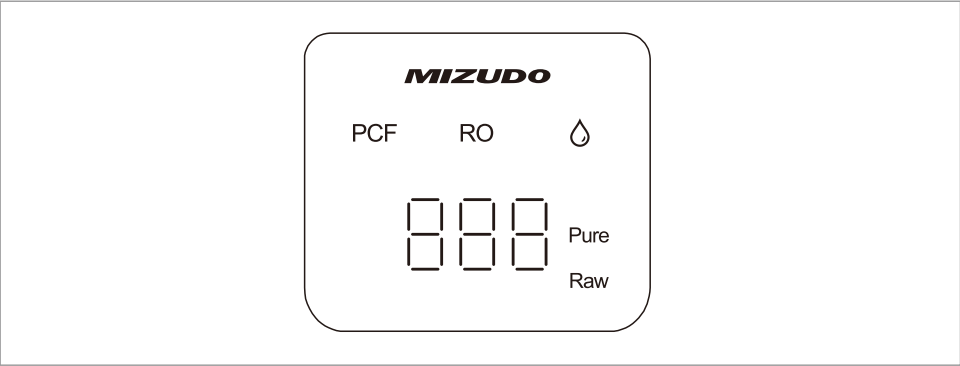
A. Reset button



To reset the filter lifetime, long press the reset button for 3s. You will hear a beep, and the indicator will flash a constant blue light. The filter lifetime has been reset.

B. Flush button

To flush the systems, press the flush button for 3s. You will hear a beep, and the system will go into a flush mode for the 30s.

RO Faucet Indicator



Indicator	Indication	Status
	Constant white light	Power on
	Flash white light	Flush mode
	Flash red light	Malfunction
	Off	Power off
PCF    RO	Constant white light	Lifetime > 95%
	Flash red light	0 < Lifetime ≤ 5%
	Constant red light	Lifetime = 0
	Off	Power off
 Pure Raw	Constant white light	Pure water TDS
	Off	Power off