



Electric Oil Filled Radiator

Features:

- Three Heat Settings:
Low: 500 Watts
Medium: 700 Watts
High: 1,200 Watts (4,100 BTU)
- Adjustable Thermostat
- Front Mounted Control Panel
- Power Indicator Light
- Oil Permanently Filled
- Safety Tip-Over Cutoff Switch
- Durable Metal Body
- Silent Operation
- Stay Cool Handle
- 360° Swivel Wheels
- 120V AC / 60Hz / 10A

INTENDED USE:

This product is intended for indoor residential and office use only, not for industrial or other commercial application. Use only with electrical wiring that is in good working order and that meets applicable codes and ordinances. This heater must be plugged in to a 120V AC, 15 Amp (or larger) circuit. Do not plug anything additional into the same circuit. If you have any questions whether your wiring is adequate, consult a qualified electrician. Risk of fire, overheating, malfunction, property damage, injury or even death may result if not adhered to.

Use your heater only with a working smoke detector located in the vicinity of your heater.

While using your heater, you should follow the **IMPORTANT INSTRUCTIONS** listed below. As part of those instructions, we have used the word “**WARNING**” to indicate the level of hazard: **WARNING** indicates a hazard which, if not avoided, could result in injury or death.

IMPORTANT INSTRUCTIONS

When using electrical appliances, basic safety precautions should always be followed to reduce the risk of fire, electric shock and injury to persons, including the following:

- Read all the instructions before using this heater.
- This heater is hot when in use. To avoid burns, do not let bare skin touch hot surfaces. Use provided handle when moving this heater. Keep combustible materials, such as furniture, pillows, bedding, papers, clothes and curtains at least 3 feet (0.9 meters) from the front of the heater and keep them away from the sides and rear.
- Do not use heater unattended. Use of extreme caution is necessary when any heater is used by or near children, invalids, disabled persons or pets.
- Do not operate the heater with a damaged power cord or after the heater malfunctions, has been dropped or damaged in any manner. Return heater to authorized service facility for examination, electrical or mechanical adjustment or repair.
- Do not use heater outdoors.
- Use your heater only in dry environments. This heater is not intended for use in a bathroom, laundry area, or similar locations, or near sinks, washing machines, swimming pools or other sources of water. Never locate heater where it may fall into a bathtub or other water container. Do not use in damp environments such as flooded basements.
- Do not place the heater on a small, unlevel, uneven or any surface which might allow heater to tip or fall.
- For proper operation, heater should be placed on a smooth, non-combustible, level surface. Do not place on rugs, carpet, vinyl flooring or other plastic surfaces. Not for use outdoors or in wet areas.
- This heater is not designed as a primary heat source.
- Always plug heaters directly into a wall outlet/receptacle. Never use with an extension cord or relocatable power tap (outlet/power strip). Always unplug heater when not in use.
- Do not run power cord under carpeting. Do not cover cord with throw rugs, runners or similar coverings. Arrange cord away from traffic area where it will not be tripped over.
- To disconnect heater, turn controls off then remove plug from outlet.
- Do not insert or allow foreign objects to enter any ventilation or exhaust opening as this may cause an electric shock or fire or damage the heater.
- To prevent a possible fire, do not block air intakes or exhaust in any manner. Do not use on soft surfaces like a bed, where openings may become blocked.
- A heater has hot and arcing or sparking parts inside. Do not use it in areas where gasoline, paint or flammable liquids are used or stored.
- Use this heater only as described in this manual. Any other use not recommended by the manufacturer may cause fire, electric shock or injury to persons or property.

READ & SAVE THESE INSTRUCTIONS

WARNING: SHOCK HAZARD

Use your heater only in dry environments. This heater is not intended for use in a bathroom, laundry area, or similar locations, or near sinks, washing machines, swimming pools or other sources of water. Never locate heater where it may fall into a bathtub or other water receptacle. Do not use in damp environments such as flooded basements.

WARNING: HOT SURFACES

Do not touch body of heater when in use. This heater is hot when in use, to avoid burns, do not let bare skin touch hot surfaces. If provided, use handles when moving this heater.

WARNING: FIRE HAZARD

Heater has hot and arcing or sparking parts inside. Do not use near combustible materials or flammable gases or sources of heat. **DO NOT USE** in areas where gasoline, paint or flammable materials are used or stored. Keep combustible materials such as furniture, pillows, bedding, papers, clothes and curtains at least 3 feet (0.9 m) from the front of the heater and keep them away from the sides and rear. To prevent a possible fire, do not block air intakes or exhaust in any manner. Do not use on soft surfaces, like a bed, where openings may become blocked. Do not place the heater near a bed because objects such as pillows or blankets can fall off the bed and be ignited by the heater. Do not insert or allow foreign objects to enter any ventilation or exhaust opening as this may cause an electric shock, fire, or damage the heater.

WARNING: ELECTRICAL SHOCK HAZARD

Do not use with damaged cord or plug. Use with adequate electrical system that is up to code.

CAUTION: TO PREVENT ELECTRIC SHOCK

This product has a polarized two prong plug (one blade is wider than the other) that must be fully inserted into a matching properly grounded outlet. This plug is designed to fit a polarized outlet only one way. If the plug does not fit fully into the outlet, reverse the plug. If the plug still does not fit, contact a qualified electrician. Do not attempt to defeat this safety feature.

Do not operate any heater with a damaged cord or plug or after heater malfunctions, has been dropped or damaged in any manner. Do not operate heater with a broken heating element or ceramic cone or any visual imperfections. Disconnect power before servicing. For repairs covered under warranty, see warranty statement. For all other repairs contact Comfort Zone® Customer Service by telephone or mail for information and assistance.

PET OWNERS NOTE:

The health of birds and some small pets are extremely sensitive to the fumes given off during the initial use of many appliances. Although these fumes are not harmful to humans, it is recommended that this heater not be used around birds and small pets during its initial use until the manufacturing corrosion coatings burn off.

USAGE:

HEATER OPERATION: Always operate the heater in the upright position following all instructions and recommendations listed in this manual.

HEATER LOCATION: Place the heater in the area of the room that is coldest.

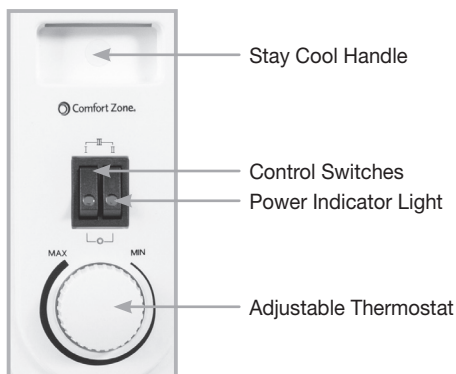
HEATER CONNECTION: Plug heater directly into 120V AC, 60Hz wall outlet. Be sure plug fits tightly in outlet. A loose connection may cause overheating and damage to the plug or heater.

NOTE: To prevent overloading a circuit, do not plug the heater into a circuit that is servicing other electrical needs. Make sure heater is at least 3 feet away from walls, furniture, and other obstacles.

TURNING HEATER ON: The power indicator light will illuminate to show the heater is plugged in and has electric power. Use the power switches to switch to desired setting. The heater has three heat settings: 500W, 700W and 1,200W. Use the 1,200W setting to raise the room temperature quickly while thermostat control is at its highest setting. (During the heaters initial use, you may experience a slight odor or smoking. This is the result of residual lubrication on the steel "burning off". This is normal and will go away after a few minutes of use.) When desired temperature is reached, the 500W or 700W setting will be sufficient to maintain a comfortable temperature.

CONTROL SWITCH POSITIONS:

OFF:	Both switches down		
LOW:	Left switch up only	"I"	Low Heating (500W)
MED:	Right switch up only	"II"	Medium Heating (700W)
HIGH:	Both switches up	"III"	Maximum Heating (1,200W)



SETTING THERMOSTAT: After the unit has warmed your room to a comfortable temperature, slowly rotate the thermostat knob counter-clockwise until the thermostat shuts off (you will hear a faint "click" sound). Leaving the thermostat at this setting will automatically maintain this temperature. For a lower temperature, rotate the knob further counter-clockwise.

TO TURN HEATER OFF: Push both control switches down.

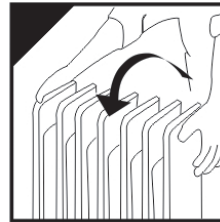
WHEEL ASSEMBLY INSTRUCTIONS:

The heater is packaged with wheels unattached. You must attach them before operating the heater.

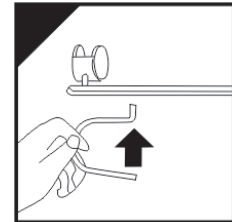
WARNING: Operate the heater only in upright position (wheels on the bottom, controls on the top), any other position could create a hazardous situation.

1. Turn the heater upside down.
2. The wheel brackets should be mounted to the far ends of the heater. Wrap "U" shaped bolt around the connector between the heater fins.
3. Slide the angled end of the "U" shaped bolt through one of the holes of the wheel bracket.
4. Place threaded second end of the "U" shaped bracket through the remaining hole and tighten down wing nut.
5. Repeat the process for the second wheel bracket.

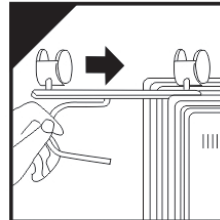
Step 1



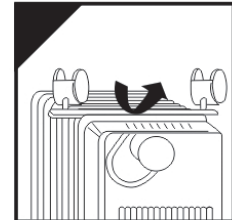
Step 2



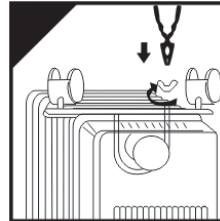
Step 3



Step 4



Step 5



IMPORTANT SAFETY FEATURES:

The heater is equipped with an automatic overheat protection device located inside the body of the heater. If the heater gets too hot for any reason, the automatic overheat protection device will turn the heater off. To reset the heater, simply turn power off and unplug the heater for 10 minutes until it cools down and then you may plug the heater in and restart. Be sure that the heater is on a smooth level surface with no obstructions. The heater is also equipped with a safety tip-over switch to turn power off to the heater when the heater tips over. To resume heater functions simply stand heater upright.

CLEANING, CARE AND STORAGE:

It is recommended that the heater be cleaned at least once per month and before storage.

1. Before cleaning, turn off and unplug the heater.
Allow it to cool completely.
2. Wipe the exterior of the unit with a soft dry cloth. **DO NOT USE WATER, WAXES, HARSH CHEMICALS OR CLEANERS, GASOLINE, BENZENE, PAINT THINNERS, ALCOHOL OR SOLVENTS.**

STORAGE: Keep original carton for storage of the heater. Coil and tie the power cord to avoid damage during storage.

WARNING: ALWAYS UNPLUG THE CORD BEFORE MOVING, CLEANING OR WHEN NOT IN USE.

WARNING: IMPORTANT! DO NOT IMMERSE HEATER IN WATER!

WARNING: DO NOT ATTEMPT TO DISASSEMBLE OR TAKE THE HEATER APART.

WARNING: DO NOT USE THE HEATER IF IT HAS MALFUNCTIONED OR BECOMES DAMAGED IN ANY WAY.

NOTE: Do not tamper with or attempt to repair or adjust any electrical or mechanical functions on this unit. There are no serviceable parts inside. Tampering with or modify this product could result serious injury, death, or fire. Risk of electric shock.

REFILLING: This heater is factory sealed and never needs refilling.

LIMITED WARRANTY

This unit is guaranteed to the original retail purchaser against defects in quality or workmanship for a period of one year from the date of original purchase. If this unit fails because of a manufacturing defect within 30 days of purchase, return the unit, with your receipt, to the retailer. After 30 days, but within the warranty period, if the unit was purchased within the continental United States, return it, freight prepaid, to World and Main for repair or replacement. If the unit was purchased outside the continental United States, return the unit to the place of purchase. This warranty does not cover damage caused by misuse, abuse, overheating or alteration. Repairs made by anyone other than World and Main are not covered in this warranty. World and Main will not be held liable for any losses due to neglectful operation. All implied warranties, including the warranties of merchantability and of fitness of purpose, if applicable, are hereby limited in duration to the period of one year from the date of original retail purchase. Some states do not allow limitations on how long an implied warranty lasts, so the above limitations may not apply to you. Incidental or consequential damages arising from a breach of either express or implied warranties are hereby disclaimed and excluded. Some states do not allow the exclusion of limitation of incidental or consequential damages, so this limitation or exclusion may not apply to you. Upon the expiration of this warranty all such liability will terminate. No other warranties are expressed or implied.

This warranty gives you specific legal rights, and you may also have other rights which vary from state to state. No informal dispute settlement mechanisms are available. This limited warranty is given in lieu of all other warranties.

Manufactured for:
World and Main (Cranbury), LLC
324A Half Acre Rd.
Cranbury, NJ 08512 USA
800-221-6895
www.comfortzoneproducts.com

Rev. 06/07/2022