

1.0 Reference and Address			
Report Number	191200101HZH-001	Original Issued: 18-Feb-2020	Revised: 10-Jun-2022
Standard(s)	Household And Similar Electrical Appliances, Part 1: General Requirements [UL 60335-1:2016 Ed.6] Safety Requirements for Household and Similar Electrical Appliances - Part 2: Particular Requirements for Refrigerating Appliances, Ice-Cream Appliances and Ice-Makers [UL 60335-2-24:2017 Ed.2+R:27Feb2020] Safety of Household and Similar Appliances - Part 1: General Requirements [CSA C22.2#60335-1:2016 Ed.2] Household and Similar Electrical Appliances – Safety – Part 2-24: Particular Requirements for Refrigerating Appliances, Ice-cream Appliances and Ice-makers [CSA C22.2#60335-2-24:2017 Ed.2+U1;U2]		
Applicant	Ningbo Handian Electric Appliance Co., Ltd.	Manufacturer 1	Ningbo Handian Electric Appliance Co., Ltd.
Address	East Guanhaiwei Industrial Zone, Cixi, Ningbo, Zhejiang 315314	Address	East Guanhaiwei Industrial Zone, Cixi, Ningbo, Zhejiang 315314
Country	China	Country	China
Contact	Mr.Hunter Chen	Contact	Mr.Hunter Chen
Phone	+86-15968023089	Phone	+86-15968023089
FAX	+86-0574-58585095	FAX	+86-0574-58585095
Email	hunter@cnkeg.com	Email	hunter@cnkeg.com
Manufacturer 2	Jiangsu Handian Electric Appliance Co., Ltd.		
Address	No. 4019, Nanjing Road, Suqian National Economic and Technological Development Area, Suqian, Jiangsu, 223800		
Country	China		
Contact	Mr.Xia Honglong		
Phone	+86-18251033597		
FAX	None		
Email	1005279867@qq.com		

2.0 Product Description	
Product	UPRIGHT-FREEZER
Brand name	Handian, COMMERCIAL COOL, BLACK & DECKER, Kismile
Description	The product covered by this report is upright-freezer intended for household & indoor use only. it is cord-connected product with a recognized mould-on grounding plug and intended to be connected to 115V power supply.
Models	KS-83F, KS-75F, KS-35F, CCUK12W, BUFK12W
Model Similarity	<p>All models are identical except for volume, compressor and ratings.</p> <p>KS-35F, CCUK12W and BUFK12W are same except for model name and brand name.</p> <p>Brand name: Handian, for KS-83F, KS-75F, KS-35F; Brand name: COMMERCIAL COOL, for CCUK12W; Brand name: BLACK & DECKER, for BUFK12W; Brand name: Kismile, for KS-35F, KS-83F, KS-75F.</p>
Ratings	<p>115V, 60Hz, Insulation blowing gas: C₅H₁₀,</p> <p>KS-83F: 2.0A, R600a/39g(1.376oz); KS-75F: 2.0A, R600a/36g(1.270oz); KS-35F, CCUK12W, BUFK12W: 1.0A, R600a/32g(1.129oz).</p>
Other Ratings	NA

3.0 Product Photographs

Photo 1 - Overall view for KS-83F

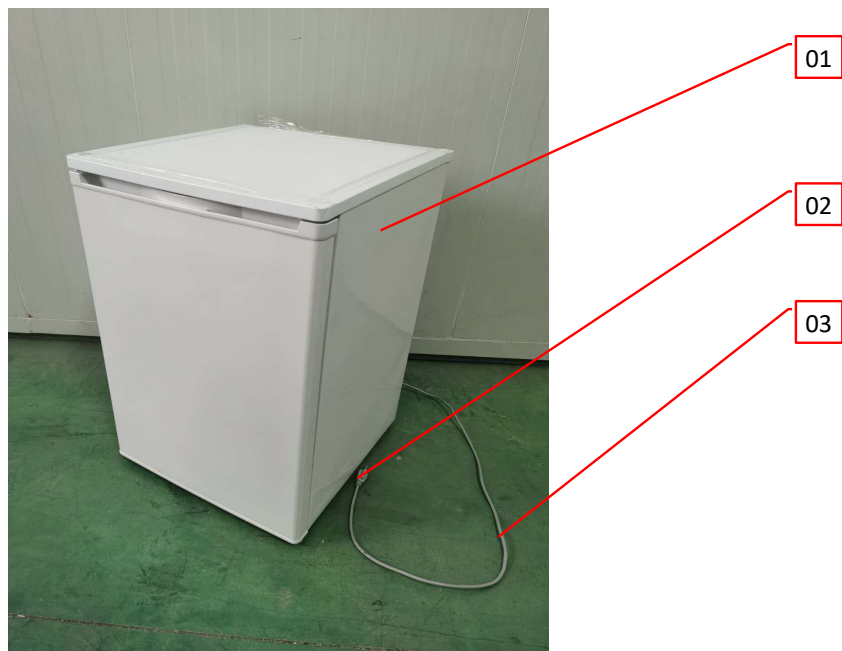


Photo 2 - Overall view for KS-83F

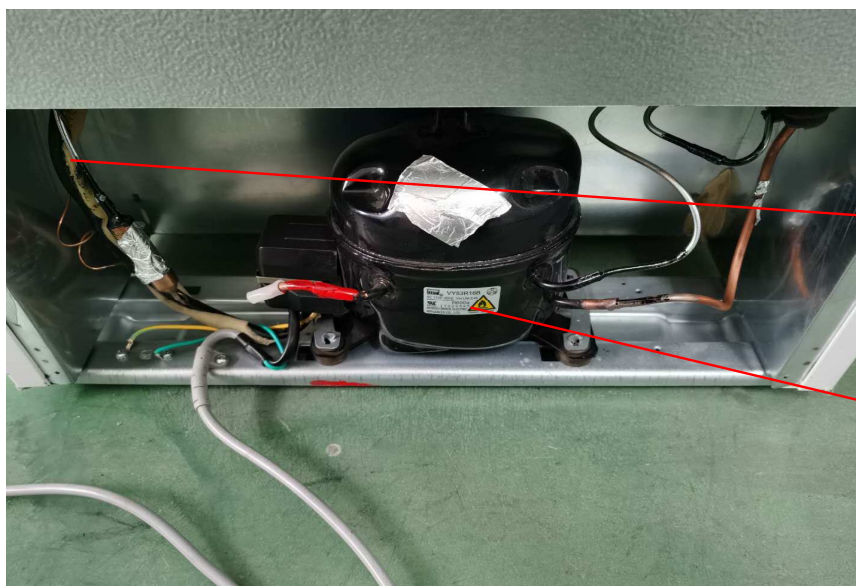


3.0 Product Photographs

Photo 3 - Door opened view for KS-83F



Photo 4 - Compressor box view for KS-83F

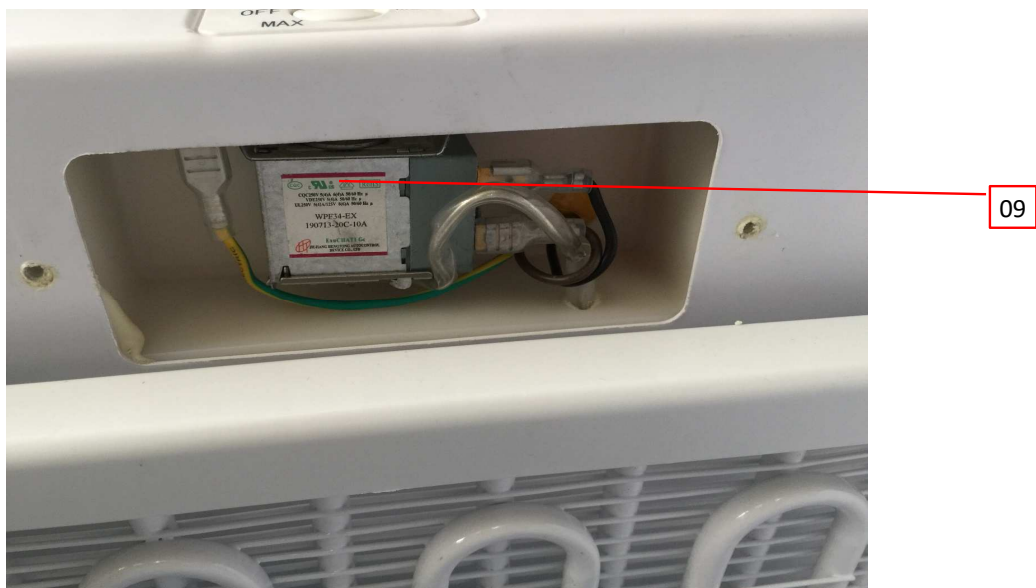


3.0 Product Photographs

Photo 5 - Control box view for KS-83F



Photo 6 - Internal view of control box for KS-83F



3.0 Product Photographs

Photo 7 - Overall view for KS-75F

Remark: Model KS-75F is same as KS-83F except for following photos



Photo 8 - Overall view for KS-75F



3.0 Product Photographs

Photo 9 - Door opened view for KS-75F



Photo 10 - Compressor box view for KS-75F



3.0 Product Photographs

Photo 11 - Overall view for KS-35F



Photo 12 - Overall view for KS-35F



3.0 Product Photographs

Photo 13 - Door opened view for KS-35F



Photo 14 - Compressor box view for KS-35F

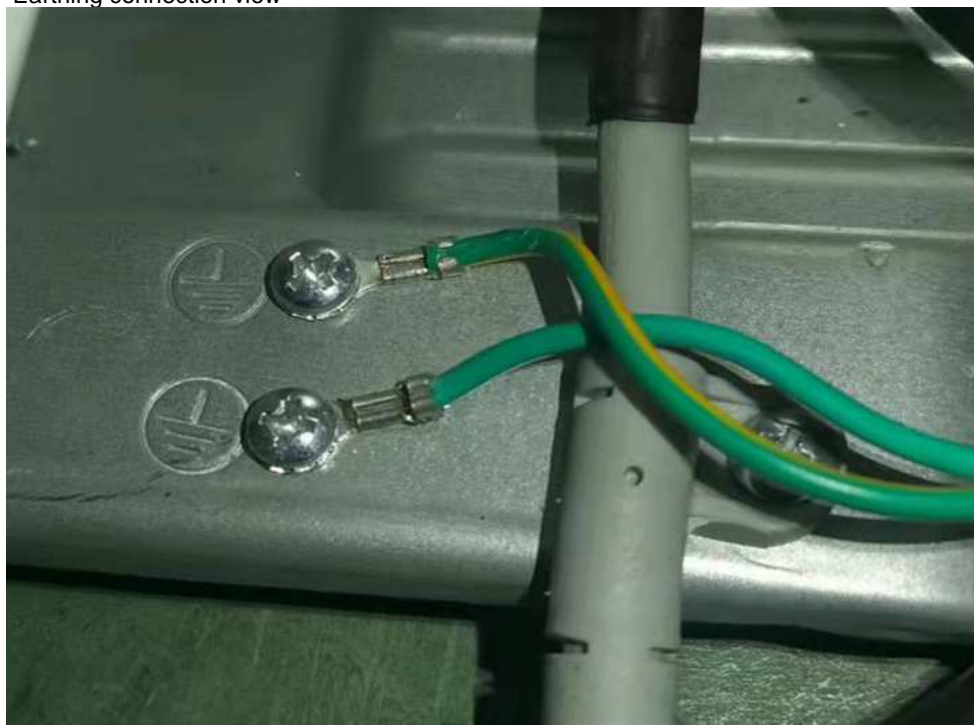


3.0 Product Photographs

Photo 15 - Internal view of control box for KS-35F



Photo 16 - Earthing connection view



4.0 Critical Components						
Photo #	Item no. ¹	Name	Manufacturer/ trademark ²	Type / model ²	Technical data and securement means	Mark(s) of conformity ³
1	1	Metal enclosure	Various	Various	Painted steel sheet for side enclosure, Stainless steel for front enclosure, Galvanized sheet for bottom enclosure. Min. thickness: 0.5mm	NR
1	2	Plug	Various	Various	NEMA Config: 5-15P, rated 125V, 15A.	UL, CSA, cETLus
1	3	Power Cord	Various	SJT	18AWGX3C, 300V, 1.5m - 3.0m. Clamped by anchorage and end with an attachment grounding plug	UL, CSA, cETLus
3	4	Inner enclosure of storage compartment	CHI MEI CORPORATION	PA-706	ABS, rated HB, RTI(60 60 60)°C, HWI=1, HAI=0, min. 1.5mm thickness.	cURus
			NINGBO LG YONGXING CHEMICAL CO LTD	HI-121H	ABS, rated HB, RTI(60 60 60)°C, HWI=2, HAI=0, min. 1.5mm thickness.	cURus
4	5	Internal wire	Various	1007	18-22AWG, 300V, 80°C	cURus
				1015	18-22AWG, 600V, 105°C	cURus
				1569	18-22AWG, 300V, 80°C	cURus
				2426	18-22AWG, 600V, 90°C	cURus
				3135	18-22AWG, 600V, 200°C	cURus
4	6	Compressor	Jiangsu Baixue Electric Appliances Co., Ltd.	VY53R16B	115V, 60Hz, R600a. Secured on the bottom enclosure by screws. For KS-83F and KS-75F.	cURus
			Hangzhou Qianjiang Refrigeration Compressor Group Co Ltd	UKV43YAX	110-120V, 60Hz, R600a, with 6μF running capacitor. Secured on the bottom enclosure by screws. For KS-83F and KS-75F.	cURus
5	7	Plastic control box	CHI MEI CORPORATION	PA-766	ABS, rated 5VA, RTI(60 60 60)°C, HWI=1, HAI=0, min. 2.5mm thickness. Secured to enclosure by screws.	cURus
			NINGBO LG YONGXING CHEMICAL CO LTD	LUPOY GN-5001TF(#)	ABS, rated 5VA, RTI(60 60 60)°C, HWI=2, HAI=0, min. 2.5mm thickness. Secured to enclosure by screws.	cURus
5	8	Evaporator	Various	Various	Painted iron, min. thickness 1.2mm, out diameter: 8mm, L=9994mm for KS-83F, L=16476mm for KS-75F. Min. thickness 0.75mm, out diameter: 7.5mm, L=10000mm for KS-35F, CCUK12W and BUFK12W.	NR

4.0 Critical Components						
Photo #	Item no. ¹	Name	Manufacturer/ trademark ²	Type / model ²	Technical data and securement means	Mark(s) of conformity ³
6	9	Thermostat	CHANGZHOU THERMOSTER ELECTRICAL APPLIANCE CO LTD	WP(D)FE series	125V,6/8A,50/60Hz. Secured to control panel by screws.	cURus
				WDF series	125V,6/8A,50/60Hz. Secured to control panel by screws.	cURus
				WPF series	125V,6/8A,50/60Hz. Secured to control panel by screws.	cURus
			CHANGZHOU HUISHANG ELECTRIC CO LTD	WDvwx-Lz	125V,6/8A,50/60Hz. Secured to control panel by screws.	cURus
				WPvwx-Lz	125V,6/8A,50/60Hz. Secured to control panel by screws.	cURus
			JIUJIANG HENG TONG AUTOCONTROL DEVICE CO LTD	WDF series	125V,6/8A,50/60Hz. Secured to control panel by screws.	cURus
				WDF-K series	125V,6/8A,50/60Hz. Secured to control panel by screws.	cURus
				WP series	125V,6/8A,50/60Hz. Secured to control panel by screws.	cURus
				WPF series	125V,6/8A,50/60Hz. Secured to control panel by screws.	cURus
			Jiujiang Keyang Electric Co Ltd	WPF series	250V,8A,50/60Hz. Secured to control panel by screws.	cURus
WDF series	250V,8A,50/60Hz. Secured to control panel by screws.	cURus				
1	10	Condenser coil (not shown)	Various	Various	Painted iron, inner diameter 4mm, thickness 0.5mm, length: 13208mm for KS-75F, 13920mm for KS-83F. Outer diameter 4mm, thickness 0.5mm, length: 9600mm for KS-35F, CCUK12W and BUFK12W.	NR
1	11	Label (not shown)	Various	Various	80°C. Pasted to the enclosure of appliance.	cURus
14	13	Compressor	Huangshi Donper Compressor Co.,Ltd.	AG60BY2	110-120V, 60Hz, R600a. Secured on the bottom enclosure by screws. For KS-35F, CCUK12W and BUFK12W.	cURus
			JINGZHOU TIANKE REFRIGERATION CO LTD	QD35C5	115V, 60Hz, R600a. Secured on the bottom enclosure by screws. For KS-35F, CCUK12W and BUFK12W.	cURus
NOTES:						
1) Not all item numbers are indicated (called out) in the photos, as their location is obvious.						
2) "Various" means any type, from any manufacturer that complies with the "Technical data and securement means" and meets the "Mark(s) of conformity" can be used.						
3) Indicates specific marks to be verified, which assures the agreed level of surveillance for the component. "NR" - indicates Unlisted and only visual examination is necessary. "See 5.0" indicates Unlisted components or assemblies to be evaluated periodically refer to section 5.0 for details.						

5.0 Critical Unlisted CEC Components

No Unlisted CEC components are used in this report.

6.0 Critical Features

Recognized Component - A component part, which has been previously evaluated by an accredited certification body with restrictions and must be evaluated as part of the basic product considering the restrictions as specified by the Conditions of Acceptability.

Listed Component - A component part, which has been previously Listed or Certified by an accredited Certification Organization with no restrictions and is used in the intended application within its ratings.

Unlisted Component - A part that has not been previously evaluated to the appropriate designated component standard. It may also be a Listed or Recognized component that is being used outside of its evaluated Listing or component recognition.

Critical Features/Components - An essential part, material, subassembly, system, software, or accessory of a product that has a direct bearing on the product's conformance to applicable requirements of the product standard.

Construction Details - For specific construction details, reference should be made to the photographs and descriptions. All dimensions are approximate unless specified as exact or within a tolerance. In addition to the specific construction details described in this Report, the following general requirements also apply.

1. Spacing - Clearances for basic insulation and supplementary insulation are no less than 0.5mm, clearances for functional insulation are no less than 1.3mm, clearances for reinforced insulation are no less than 1.5mm. Creepage distances for basic insulation and supplementary insulation are no less than 2.4mm, creepage distances for functional insulation are no less than 3.2mm, creepage distances for reinforced insulation are no less than 4.8mm.
2. Mechanical Assembly - Components such as switches, fuseholders, connectors, wiring terminals and display lamps are mounted and prevented from shifting or rotating by the use of lockwashers, starwashers, or other mounting format that prevents turning of the component.
3. Corrosion Protection - All ferrous metal parts are protected against corrosion by painting, plating or the equivalent.
4. Accessibility of Live Parts - All uninsulated live parts in primary circuitry are housed within a metal enclosure constructed with no openings other than those specifically described in Sections 4 and 5.
5. Grounding - All exposed dead-metal parts and all dead-metal parts within the enclosure that are exposed to contact during any servicing operation and that are likely to become energized are reliably connected to the grounding terminal lead of the power supply cord or the equipment grounding terminal.
6. Internal Wiring - Internal wiring is routed away from sharp or moving parts. Internal wiring leads terminating in soldered connections are made mechanically secure prior to soldering. Recognized Component separable (quick disconnect) connectors of the positive detent type, closed loop connectors, or other types specifically described in the text of this report are also acceptable as internal wiring terminals. At points where internal wiring passes through metal walls or partitions, the wiring insulation is protected against abrasion or damage by plastic bushings or grommets. All wiring is minimum 22 AWG, with a minimum rating of 300V, 80°C.
8. Schematics - NA
9. Markings - The product is marked on as labeling system as described in item no.11 of Section 4.0 as follows: applicant's name or brand name, model number, date of manufacturer, electrical ratings, design pressure etc.
10. Cautionary Markings - Refer to Illustration No.1, 2 for details.
11. Installation, Operating and Safety Instructions - Instructions for installation and use of this product are provided by the manufacturer. The products may be required to have markings in both French and English. If so, it is the responsibility of the Applicant to determine any such requirement and provide bilingual markings, where applicable, in accordance with the Provincial Regulatory Authorities. Refer to Illustration No. 3, 3a-3b for details.

7.0 Illustrations

Illustration 1 - Cautionary marking



Warning: Risk of fire/flammable materials

Prudence: les risques d'incendie/matériaux inflammables

C₅H₁₀

Remark:

1. The height of the triangle in the sybol "Caution: Risk of fire" shall be at least 15mm.
2. The height of the letters used for the marking of the type of flammable insulation blowing gas shall be at least 40mm.
3. The label of model KS-75F is same as above except for model number and ratings.

7.0 Illustrations

Illustration 2 - Cautionary marking

- a) **DANGER - Risk Of Fire Or Explosion. Flammable Refrigerant Used. Do Not Use Mechanical Devices To Defrost Refrigerator. Do Not Puncture Refrigerant Tubing.**

DANGER - Risque d'incendie ou d'explosion. Frigorigène inflammable utilisé. Ne pas utiliser d'appareils mécaniques pour dégivrer le réfrigérateur. Ne pas perforer la conduite de frigorigène.

- b) **DANGER - Risk Of Fire Or Explosion. Flammable Refrigerant Used. To Be Repaired Only By Trained Service Personnel. Do Not Puncture Refrigerant Tubing.**

DANGER - Risque d'incendie ou d'explosion. Frigorigène inflammable utilisé. La réparation doit être faite seulement par un personnel qualifié. Ne pas perforer la conduite de frigorigène.

- c) **CAUTION - Risk Of Fire Or Explosion. Flammable Refrigerant Used. Consult Repair Manual/Owner's Guide Before Attempting to Service This Product. All Safety Precautions Must Be Followed.**

ATTENTION - Risque d'incendie ou d'explosion. Frigorigène inflammable utilisé. Consulter le manuel de réparation/manuel du propriétaire avant d'entreprendre l'entretien de ce produit. Toutes les mesures de sécurité doivent être respectées.

- d) **CAUTION - Risk Of Fire Or Explosion. Dispose Of Properly In Accordance With Federal Or Local Regulations. Flammable Refrigerant Used.**

ATTENTION - Risque d'incendie ou d'explosion. Éliminer convenablement conformément à la réglementation fédérale ou locale Frigorigène inflammable utilisé.

- e) **CAUTION - Risk Of Fire Or Explosion Due To Puncture Of Refrigerant Tubing; Follow Handling Instructions Carefully. Flammable Refrigerant Used.**

ATTENTION - La perforation de la conduite de frigorigène peut entraîner un incendie ou une explosion. Suivre avec soin les instructions fournies. Frigorigène inflammable utilisé.

- f) **CAUTION - To Prevent A Child From Being Entrapped, Keep Out Of Reach Of Children And Not In The Vicinity Of Freezer Or Refrigerator.**

ATTENTION - Afin de prévenir qu'un enfant ne soit emprisonné, garder hors d'atteinte des enfants et loin du congélateur ou du réfrigérateur.

Remarks:

1. The above markings described in item:

- a) shall be located on or near any evaporators that can be contacted by the user,
- b) and c) shall be pasted near the machine compartment,
- d) shall be pasted on the exterior of the appliance,
- e) shall be pasted near all exposed refrigerant tubing and also pasted on the shipping carton,
- f) shall be placed over the key slot of the lock or immediately adjacent to it. This marking may be removable.

2. The letters of marking shall be no less than 6.4mm(1/4inch) high in the US, or 3.2mm(1.8 inch) high in Canada.

3. The refrigeration tubing or other devices through which the refrigerant is interded to be serviced shall be painted or colored red. This color shall be present at all places where service puncturing or otherwise creating an opening in the refrigerant circuit might be expected. In the case of a process tube on a compressor, the color mark shall extend at least 2.5cm(1inch) from the compressor.

7.0 Illustrations

Illustration 3 - Instructions

User Manual

UPRIGHT-FREEZER

KS-83F, KS-75F

115V, 60Hz, 2.0A, Insulation blowing gas: C5H10,

KS-83F: R600a/39g(1.376oz);

KS-75F: R600a/36g(1.270oz)

High side pressure: 362Psig, Low side pressure: 128Psig

BEFORE USE, PLEASE READ AND FOLLOW ALL SAFETY RULES AND OPERATING INSTRUCTIONS.

Ningbo HanDian Electric Appliance Co., Ltd.
East Guanhaiwei Industrial Zone, Cixi, Ningbo, 315314 P.R. China

7.0 Illustrations

Illustration 3a - Instructions

Dear customers,
Thank you for purchasing our product. In order to ensure your safety and achieve the best using effect, please read this instruction manual carefully.

Before you start:

- Read all the instructions before using. Keep this manual for future reference.
- Warning: Never try to use this appliance for applications or in a way which is not described in the instruction, otherwise severe hazards may occur.
- Do not use the appliance in a dusty environment or in an explosive atmosphere (flammable gases, vapors, vapors from organic solvents).
- This appliance is intended for HOUSEHOLD USE ONLY and not for commercial or industrial use.

General safety advice

- Keep the appliance out of reach for children! Do not allow children to play with appliance.
- This appliance can be used by children aged from 8 years and above and persons with reduced physical, sensory or mental capabilities or lack of experience and knowledge if they have been given supervision or instruction concerning use of the appliance in a safe way and understand the hazards involved. Children shall not play with the appliance. Cleaning and user maintenance shall not be made by children without supervision.
- This appliance is not intended for use by persons (including children) with reduced physical, sensory or mental capabilities, or lack of experience and knowledge, unless they have been given supervision or instruction concerning use of the appliance by a person responsible for their safety. Children should be supervised to ensure that they do not play with the appliance.
- Unplug the appliance from outlet when not in use, before putting on or taking off parts, before cleaning.
- Make sure to place the plug all the way into socket when connecting your appliance.
- Insert the plug into a single grounded socket.
- Never use the appliance in place where combustible and inflammable materials are kept.
- For safety reason, be sure to repair or replace parts at an authorized service dealer.
- The motor is permanently lubricated and will require no oil.
- The appliance must be positioned so that the plug is accessible.

7.0 Illustrations

Illustration 3b - Instructions

- Please according to local regulations regarding disposal of the appliance for its flammable blowing gas. Before you scrap the appliance, please take off the doors to prevent children trapped.
- **WARNING** – Do not store explosive substances such as aerosol cans with a flammable propellant in this appliance.
- **- WARNING** – Keep ventilation openings, in the appliance enclosure or in the built-in structure, clear of obstruction
- **WARNING** – Do not use mechanical devices or other means to accelerate the defrosting process, other than those recommended by the manufacturer
- **WARNING** – Do not damage the refrigerant circuit
- **WARNING** – Do not use electrical appliances inside the food storage compartments of the appliance, unless they are of the type recommended by the manufacturer
- **Warning: If the supply cord is damaged, it must be replaced by the manufacturer or its service agent or a similarly qualified person in order to avoid a hazard.**
- **Placed against a wall with a free distance not exceeding 75 mm.**
- Please accord to local regulations regarding disposal of the appliance for its flammable blowing gas. Before you scrap the appliance, please take off the doors to prevent children trapped.
- **Warning: Risk of fire / flammable materials, taking care to avoid causing a fire by igniting flammable material.**
- **DANGER: Risk of child entrapment. Before you throw away your old refrigerator or freezer:**
 - Take off the doors.
 - Leave the shelves in place so that children may not easily climb inside.
- This appliance is intended to be used in household and similar applications such as
 - staff kitchen areas in shops, offices and other working environments;
 - farm houses and by clients in hotels, motels and other residential type environments;
 - bed and breakfast type environments;
 - catering and similar non-retail applications.

8.0 Test Summary				
Evaluation Period	4-Dec-2019 to 18-Feb-2020		Project No.	191200101HZH
Sample Rec. Date	3-Dec-2019	Condition	Prototype	Sample ID. 1191203-10-001~002
Test Location	16 No. 1 Ave., Xiasha Economic Development District, Hangzhou 310018, China			
Test Procedure	Testing Lab			
Determination of the result includes consideration of measurement uncertainty from the test equipment and methods. The product was tested as indicated below with results in conformance to the relevant test criteria.				
The following tests were performed:				
Test Description	UL 60335-1:2016 Ed.6 UL 60335-2-24:2017 Ed.2 CSA C22.2#60335-1:2016 Ed.2 CSA C22.2#60335-2-24:2017 Ed.2 Clause			
Marking and instructions	7			
Protection against access to LIVE PARTS	8			
Power input and current	10			
Heating	11			
Leakage current and electric strength at operating temperature	13			
Moisture resistance	15			
Leakage current and electric strength	16			
Abnormal operation	19			
Stability and mechanical hazards	20			
Mechanical strength	21			
Construction	22			
Internal wiring	23			
Supply connection and external flexible cords	25			
Provision for earthing	27			
Screws and connections	28			
CLEARANCES, CREEPAGE DISTANCES and solid insulation	29			
Resistance to heat and fire	30			
Proof Tracking Test	Annex N			
Door Hinge Strength Test	Annex 101.DVC			
Resistance to Heat and Fire	Annex 101.DVD			

8.0 Test Summary						
Evaluation Period	6-Jun-2020		to	18-Jun-2020	Project No.	200600192HZH
Sample Rec. Date	5-Jun-2020	Condition	Prototype		Sample ID.	1120605-09-001~002
Test Location	16 No. 1 Ave., Xiasha Economic Development District, Hangzhou 310018, China					
Test Procedure	Testing Lab					
Determination of the result includes consideration of measurement uncertainty from the test equipment and methods. The product was tested as indicated below with results in conformance to the relevant test criteria.						
The products covered within this report were evaluated for new model KS-75F added, after review, following tests found to be performed.						
Test Description			UL 60335-1:2016 Ed.6 UL 60335-2-24:2017 Ed.2 CSA C22.2#60335-1:2016 Ed.2 CSA C22.2#60335-2-24:2017 Ed.2 Clause			
Marking and instructions			7			
Protection against access to LIVE PARTS			8			
Power input and current			10			
Heating			11			
Leakage current and electric strength at operating temperature			13			
Moisture resistance			15			
Leakage current and electric strength			16			
Abnormal operation			19			
Stability and mechanical hazards			20			
Mechanical strength			21			
Construction			22			
Provision for earthing			27			
CLEARANCES, CREEPAGE DISTANCES and solid insulation			29			
Door Hinge Strength Test			Annex 101.DVC			

8.0 Test Summary			
Evaluation Period	4-Jan-2022	to	4-Mar-2022
Project No.	220100584HAN		
Sample Rec. Date	28-Dec-2021	Condition	Prototype
Sample ID.	1211228-03-003~004, 1220120-02-002~003		
Test Location	Building No.2, Juanhu Science and Technology Innovation Park, 500 East Shuiyueting Road, Haining, Zhejiang, China		
Test Procedure	Testing Lab		
Determination of the result includes consideration of measurement uncertainty from the test equipment and methods. The product was tested as indicated below with results in conformance to the relevant test criteria.			
This report is to update standards from "UL 60335-2-24:2017 Ed.2" to "UL 60335-2-24:2017 Ed.2+R:27Feb2020" and from "CSA C22.2#60335-2-24:2017 Ed.2" to "CSA C22.2#60335-2-24:2017 Ed.2+U1;U2", add new models: KS-35F, CCUK12W and BUFK12W, add new compressors: UKV43YAX, AG60BY2 and QD35C5. After review, following tests were performed:			
Test Description	UL 60335-1:2016 Ed.6 UL 60335-2-24:2017 Ed.2+R:27Feb2020 CSA C22.2#60335-1:2016 Ed.2 CSA C22.2#60335-2-24:2017 Ed.2+U1;U2 Clause		
Power input and current	10		
Heating	11		
Leakage current and electric strength at operating temperature	13		
Moisture resistance	15		
Leakage current and electric strength	16		
Abnormal operation	19		
Mechanical strength	21		
Construction	22		
Internal wiring	23		
CLEARANCES, CREEPAGE DISTANCES and solid insulation	29		
Resistance to heat and fire	30		
Proof Tracking Test	Annex N		
Door Hinge Strength Test	Annex 101.DVC		
8.1 Signatures			
A representative sample of the product covered by this report has been evaluated and found to comply with the applicable requirements of the standards indicated in Section 1.0.			
Completed by:	Rocky Gu	Reviewed by:	Allen Ding
Title:	Certification engineer	Title:	Mandated Reviewer
Signature:	Signature on file	Signature:	Signature on file

9.0 Correlation Page For Multiple Listings

The following products, which are identical to those identified in this report except for model number and Listee name, are authorized to bear the ETL label under provisions of the Intertek Multiple Listing Program.

BASIC LISTEE	Ningbo Handian Electric Appliance Co., Ltd.
Address	East Guanhaiwei Industrial Zone, Cixi, Ningbo, Zhejiang 315314
Country	China
Product	UPRIGHT-FREEZER

MULTIPLE LISTEE 1	None
Address	
Country	
Brand Name	
ASSOCIATED MANUFACTURER	
Address	
Country	
MULTIPLE LISTEE 1 MODELS	BASIC LISTEE MODELS

MULTIPLE LISTEE 2	None
Address	
Country	
Brand Name	
ASSOCIATED MANUFACTURER	
Address	
Country	
MULTIPLE LISTEE 2 MODELS	BASIC LISTEE MODELS

MULTIPLE LISTEE 3	None
Address	
Country	
Brand Name	
ASSOCIATED MANUFACTURER	
Address	
Country	
MULTIPLE LISTEE 3 MODELS	BASIC LISTEE MODELS

10.0 General Information

The Applicant and Manufacturer have agreed to produce, test and label ETL Listed products in accordance with the requirements of this Report. The Manufacturer has also agreed to notify Intertek and to request authorization prior to using alternate parts, components or materials.

COMPONENTS

Components used shall be those itemized in this Intertek report covering the product, including any amendments and/or revisions.

LISTING MARK

The ETL Listing mark applied to the products shall either be separable in form, such as labels purchased from Intertek, or on a product nameplate or other media only as specifically authorized by Intertek. Use of the mark is subject to the control of Intertek.

The mark must include the following four items:

- 1) applicable country identifiers "US" and/or "C" or "US", "C" and "EU"
- 2) the word "Listed" or "Classified" or "Recognized Component" (whichever is appropriate)
- 3) a control number issued by Intertek
- 4) a product descriptor that identifies the standards used for certification. Example:

For US standards, the words, "Conforms to" shall appear with the standard number along with the word, "Standard" or "Std." Example: "Conforms to ANSI/UL Std. XX."

For Canadian standards, the words "Certified to CAN/CSA Standard CXX No. XX." shall be used, or abbreviated, "Cert. to CAN/CSA Std. CXX No. XX."

Can be used together when both standards are used.

If all standards on the ATM have the same standard title, the shared title or its abbreviation may be used in place of the examples above. Example: "Medical Electrical Equipment" or "MEE"; "Information Technology Equipment" or "ITE"; "Audio/Video Information And Communication Technology Equipment" or "A/V ICTE".

Note: A facsimile must be submitted to Intertek, Attn: Follow-up Services for approval prior to use.

The facsimile need not have a control number. A control number will be issued **after signed Certification**

Agreements have been received by the Follow-up Services office, approval of the facsimile of your proposed Listing Mark, satisfactory completion of the Listing Report, and scheduling of a factory assessment in your facility.

MANUFACTURING AND PRODUCTION TESTS

Manufacturing and Production Tests shall be performed as required in this Report.

FOLLOW-UP SERVICE

Periodic unannounced audits of the manufacturing facility (and any locations authorized to apply the mark) shall be scheduled by Intertek. An audit report shall be issued after each visit. Special attention will be given to the following:

1. Conformance of the manufactured product to the descriptions in this Report.
2. Conformance of the use of the ETL mark with the requirements of this Report and the Certification Agreement.
3. Manufacturing changes.
4. Performance of specified Manufacturing and Production Tests.

In the event that the Intertek representative identifies non-conformance(s) to any provision of this Report, the Applicant shall take one or more of the following actions:

1. Correct the non-conformance.
2. Remove the ETL Mark from non-conforming product.
3. Contact the issuing product safety evaluation center for instructions.

10.1 Evaluation of Unlisted Components

Because Unlisted Components are uncontrolled, and they do not fall under a third party follow up program, Intertek may require these components to be tested and/or evaluated at least once annually, more often for certain components, as part of the independent certification process. The Unlisted Components in Section 5.0 require testing and/or evaluation as indicated.

The Applicant will be notified, in writing, via the applicable contact methods, as defined in Section 1.0, when these components must be selected and sent to Component Evaluation Center (CEC) for re-evaluation.

Due to particular testing requirements, some components may be requested to be shipped to specific labs. Thus, specific shipment destination(s) for each sample will be provided in the written notification.

Managing CEC Location:
Intertek Testing Services Shanghai Limited
ETL Component Evaluation Center
Building No. 86, 1198 Qinzhou Road (North)
Shanghai 200233, China
Attn: Ms. Emiliana Zhou

Sample Disposition: Due to the destructive nature of the testing, all samples will be discarded at the conclusion of testing unless, the manufacturer specifically requests the return of the samples. The request for return must accompany the initial component shipment.

11.0 Manufacturing and Production Tests

The manufacturer agrees to conduct the following Manufacturing and Production Tests as specified:

Required Tests

Earth continuity test,
Electric strength test,
Functional test
Refrigerant leakage test

11.1 Earth continuity test

Method

A current of at least 10 A, derived from a source having a no-load voltage not exceeding 12 V (a.c. or d.c.), is passed between each of the ACCESSIBLE EARTHED METAL PARTS and the earthing pin or earthing contact of the plug;

The voltage drop is measured and the resistance is calculated and shall not exceed 0,2 W , or 0,1 W plus the resistance of the SUPPLY CORD.

As an alternative to the test method specified, grounding continuity may be determined by any suitable indicating device, such as an ohmmeter, a battery and buzzer combination, or the like.

Products Requiring Earth continuity test:

Product

All products covered by this Report.

11.2 Electric strength test

Method

The insulation of the appliance is subjected to a voltage of substantially sinusoidal waveform having a frequency of approximately 50 Hz or 60 Hz for 1 s.

No breakdown shall occur. Breakdown is assumed to occur when the current in the test circuit exceeds 5 mA. However, this limit may be increased up to 30 mA for appliances with a high leakage current.

Products Requiring Electric strength test:

Product

Test Voltage

Test Time

BASIC INSULATION of all products covered by this Report.

800V

1 s

DOUBLE or REINFORCED INSULATION of all products covered by this Report.

2000V

1 s

11.3 Functional test

Method

The correct functioning of an appliance is checked by inspection or by an appropriate test if the incorrect connection or adjustment of components has safety implications.

Products Requiring Functional test:

All products covered by this Report.

11.4 Refrigerant leakage test

Method

Each refrigerator shall be tested and proved tight at not less than the pressures determined during the heating test, Clause 11, nor less than the saturation pressure of the refrigerant at the following temperatures in an installed state:

- a) 26,5 °C (80 °F) for low sides; and
- b) 51,7 °C (125 °F) for high sides.

A method other than the pressure testing at the above pressures may be employed if it can be demonstrated that the alternate test method produces results that are at least equivalent to the pressure test method.

If the final assembly is completed with telescoped tubing joints that are sealed with silver solder, brazing, or the equivalent, the pressure test of the complete system may be at the low-side test pressure provided that the high-side parts are individually tested by the refrigerator manufacturer or by the manufacturer of the part at not less than the high-side test pressure.

Products Requiring Refrigerant leakage test:

All products covered by this Report.

12.0 Revision Summary				
The following changes are in compliance with the declaration of Section 8.1:				
Date/ Proj # Site ID	Project Handler/ Reviewer	Section	Item	Description of Change
30-Jun-2020	Bill Hu	2.0	-	Add one brand name: Kismile and one model KS-75F, revise Model Similarity and Ratings accordingly.
200600192H ZH	Allen Ding	3.0	7-10	Add four photos for new model.
		4.0	8,10	Revise Technical data of Evaporator and Condenser for new model.
			12	Add compressor for new model.
		7.0	1	Add remark 3 for new model.
			3	Add new model into manual.
		8.0	-	Test Summary.
18-Aug-2020	Bill Hu	2.0	-	Delete the Brand name: Kismile and revise Model Similarity accordingly.
200800168H ZH	Allen Ding	9.0	1	Add ML1: ROWAN ELECTRIC APPLIANCE LLC and ML models: KS-75F, KS-83F with brand name: KISMILE base BL models: KS-75F, KS-83F respectively.
10-Mar-2022	Rocky Gu	1.0	-	Update standards from "UL 60335-2-24:2017 Ed.2" to "UL 60335-2-24:2017 Ed.2+R:27Feb2020" and from "CSA C22.2#60335-2-24:2017 Ed.2" to "CSA C22.2#60335-2-24:2017 Ed.2+U1;U2". Add manufacturer 2 "Jiangsu Handian Electric Appliance Co., Ltd.".
220100584H AN	Allen Ding	2.0	-	Add new brand name: COMMERCIAL COOL, BLACK & DECKER, Kismile. Add new models: KS-35F, CCUK12W and BUFK12W. Revise Model Similarity and Ratings.
		3.0	11-16	Add photos for new models.
		4.0	3	Revise Technical data of Power Cord for deleting: VW-1.
		4.0	4	Delete Inner enclosure of storage compartment type PS. Add Inner enclosure of storage compartment type PA-706 and HI-121H.
		4.0	5	Add Internal wire type 1569 and 2426.
		4.0	6	Add Compressor type UKV43YAX. Revise Technical data for adding: For KS-83F and KS-75F.
		4.0	8	Revise Technical data for adding: min. thickness 0.75mm, out diameter: 7.5mm, L=10000mm for KS-35F, CCUK12W and BUFK12W.
		4.0	9	Correct Technical data of Thermostat from "125A,6/8A,50/60Hz" to "125V,6/8A,50/60Hz". Add Thermostat type WPF series and WDF series manufactured by Jiujiang Keyang Electric Co Ltd.
		4.0	10	Revise Technical data for adding: outer diameter 4mm, thickness 0.5mm, length: 9600mm for KS-35F, CCUK12W and BUFK12W.
		4.0	12	Delete Compressor type VY45C16B, manufactured by "Jiangsu Baixue Electric Appliances Co., Ltd.".
		4.0	13	Add compressor for new model.
		8.0	-	Test Summary.
		9.0	ML1	Add associated manufacturer 2.

12.0 Revision Summary				
The following changes are in compliance with the declaration of Section 8.1:				
Date/ Proj # Site ID	Project Handler/ Reviewer	Section	Item	Description of Change
10-Jun-2022	Stephen Zhu <i>Stephen Zhu</i>	2.0	-	Revise Model Similarity for Brand name, revise from "Kismile, for KS-35F" to "Kismile, for KS-35F, KS-83F, KS-75F".
220600190H AN	Allen Ding	7.0	Illustration No. 1	Delete image of marking plate
	<i>Allen Ding</i>	9.0	ML1	Delete ML 1: ROWAN ELECTRIC APPLIANCE LLC and ML model: KS-75F, KS-83F with brand name:KISMILE base on BL model: KS-75F, KS-83F