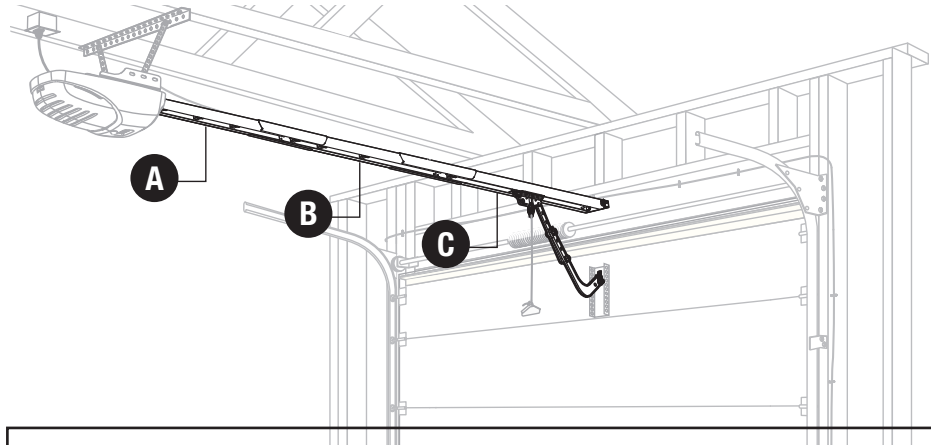


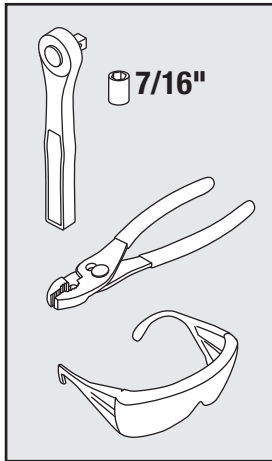


Screw Drive Models



Thank you for your purchase of a Genie® rail. The following instructions **ONLY** cover "Rail Assembly". Complete installation instructions, pre-installation considerations and, all warnings for installations of Genie® garage door openers are provided with your purchase of a Genie® Powerhead assembly.

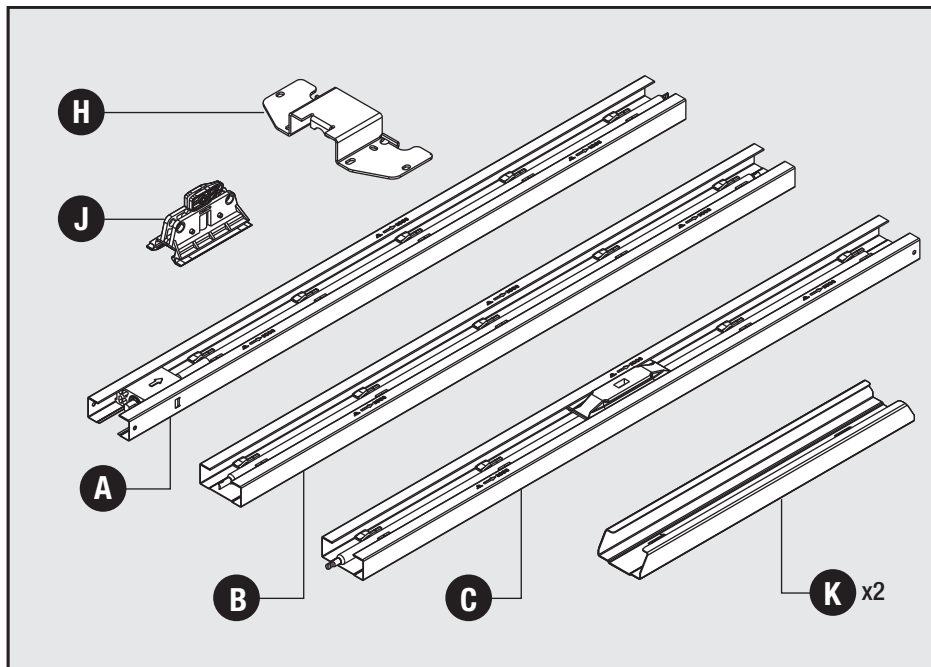
Recommended Tools



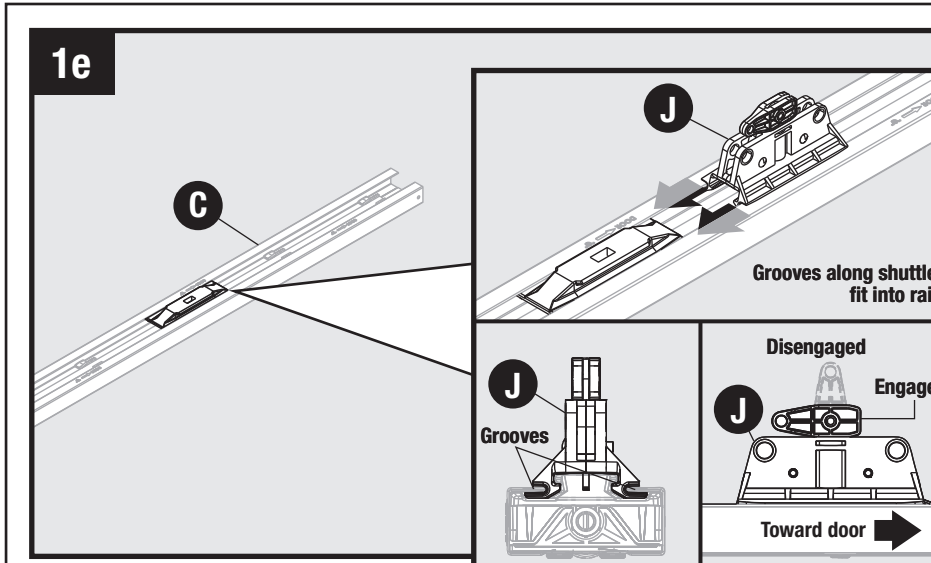
Hardware Bags

BLUE BAG	CLEAR BAG
Shaft coupler	Clip (x2) Collar (x2)
Clevis pin (x2)	Cotter pin (x2)
1/4"-14 x 3/4" Tapered flange screw (x6)	3/8" Lock nut (x2)
	3/8"-16 x 7/8" Bolt (x2)

Parts Included

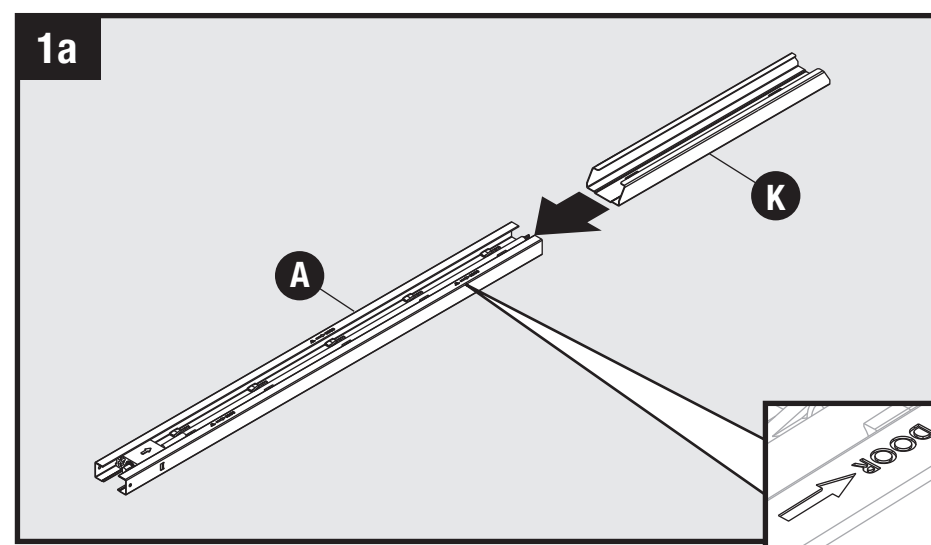
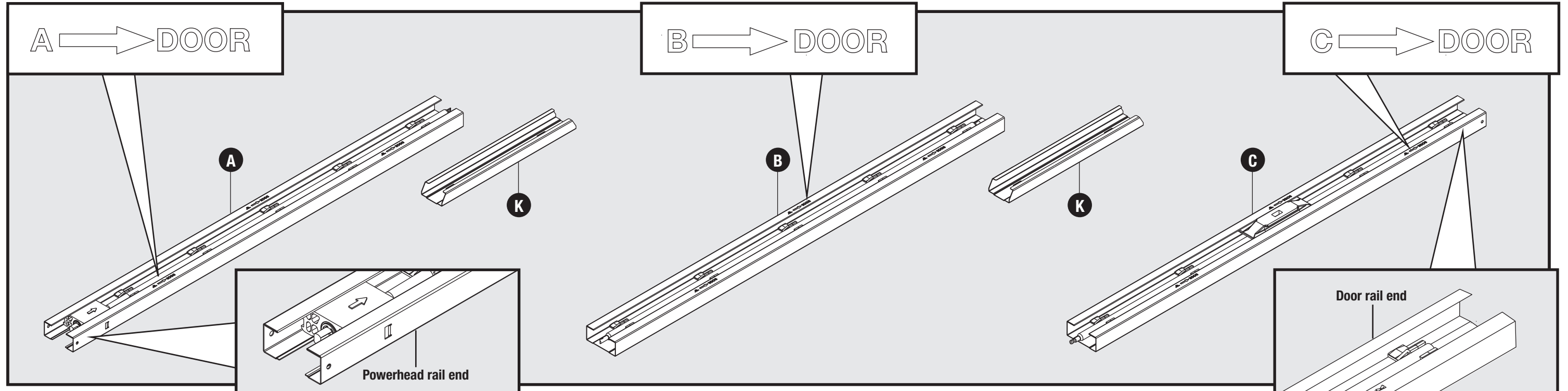


STOP Need help or have questions? Call us: **800-354-3643**
DO NOT RETURN to the store.

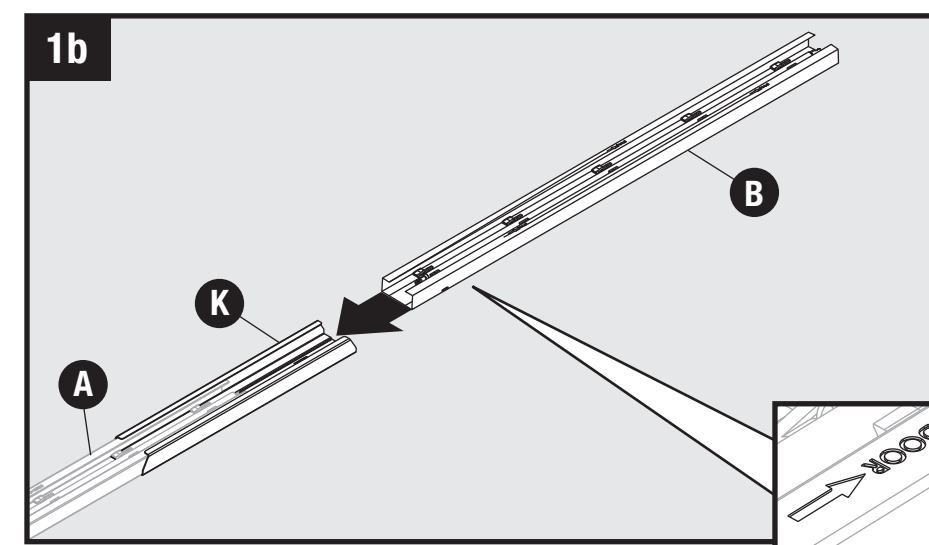


Attach shuttle (J) to carriage door end rail section (C).

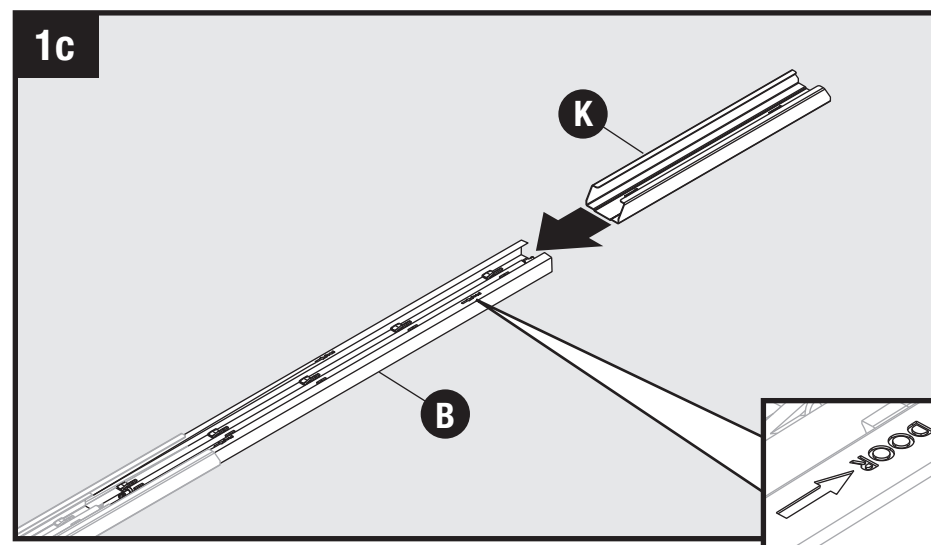
1 Rail Assembly
(CLEAR BAG hardware)



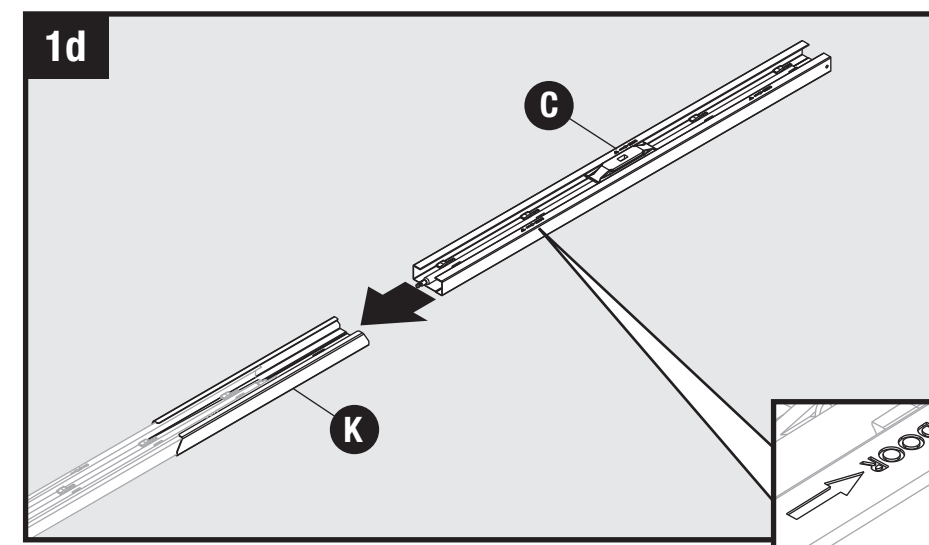
Slide one rail connector (K) onto powerhead rail section (A) until it locks.



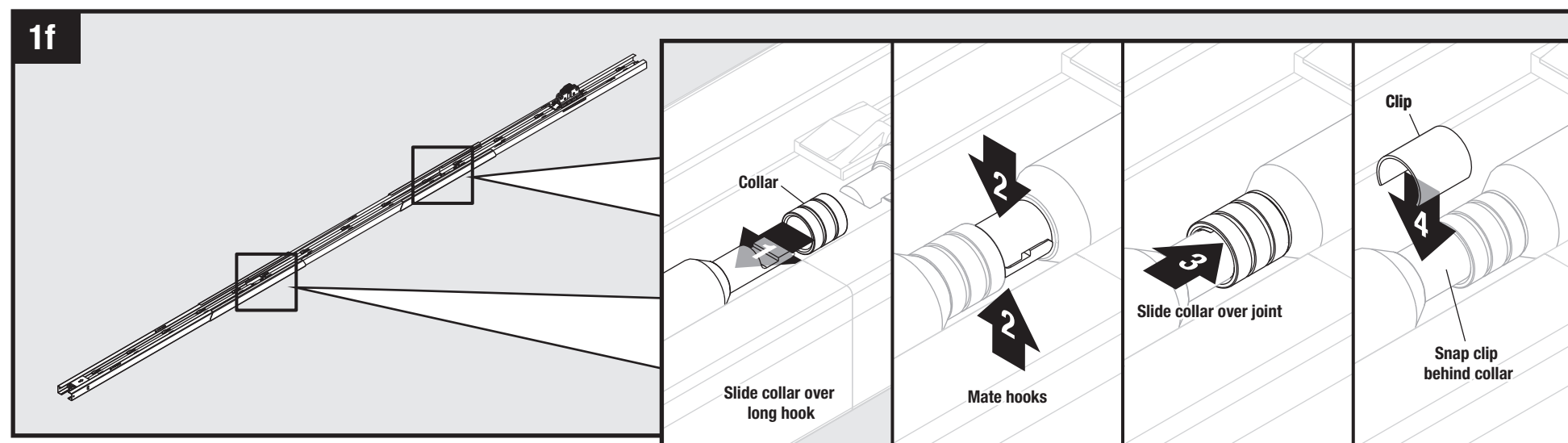
Slide middle rail section (B) into the rail connector (K) until it locks.



Slide second rail connector (K) onto other end of middle rail section (B) until it locks.

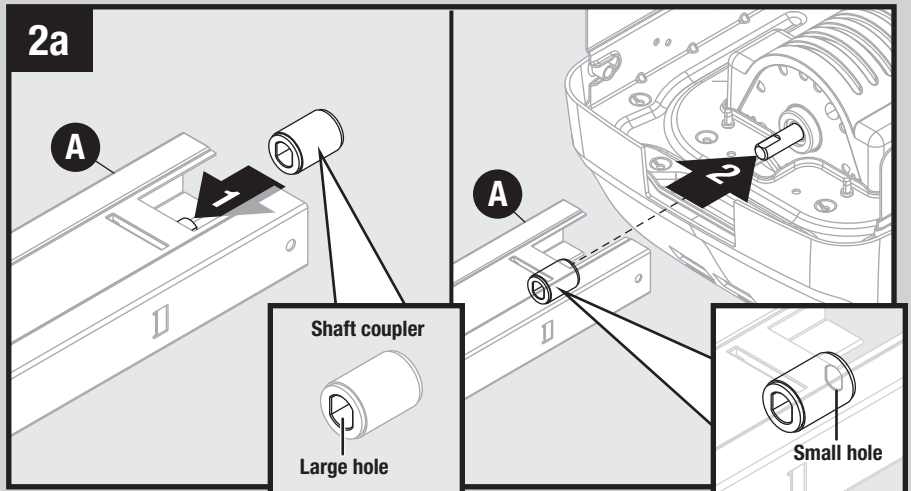


Slide door end rail section (C) into the rail connector (K) until it locks.

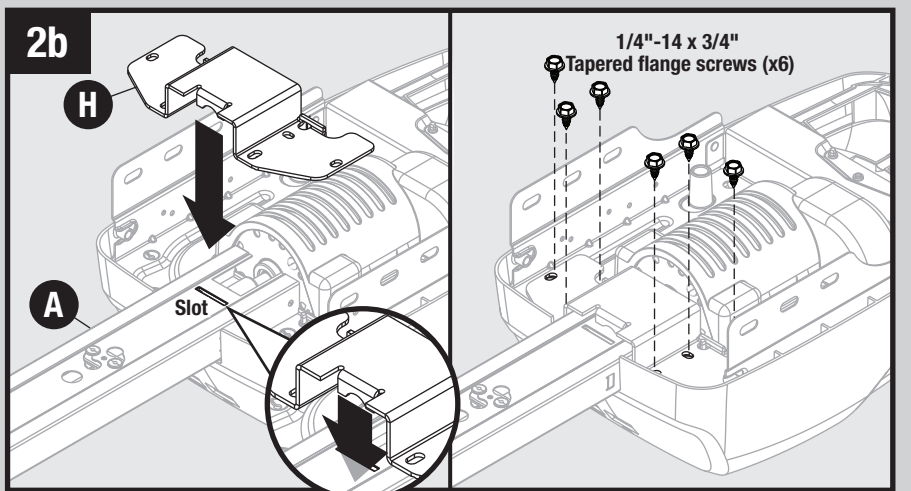


Secure screw drives of each section with (2) collars and (2) clips.

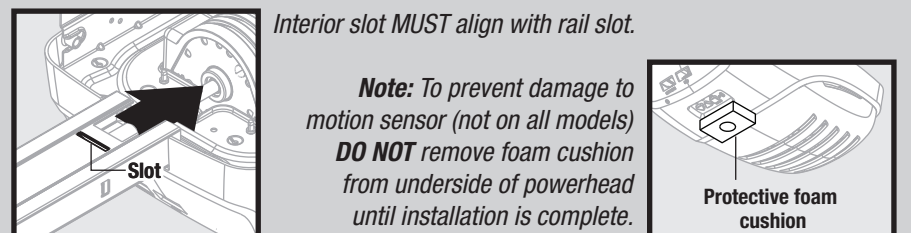
2 Attaching Rail to Powerhead
(BLUE BAG hardware)



Place shaft coupler large hole over screw drive. Align and slide screw drive/coupler small hole over motor shaft.
Note: The larger hole fits over the drive screw and the smaller hole fits over the motor shaft.



Place powerhead bracket (H) on top of rail with tongue of bracket inserted into slot on rail. Align bracket holes with holes on powerhead (I) and secure with tapered flange bolts. (Use soft material to cushion underside of opener in order to protect powerhead.)



Note: To prevent damage to motion sensor (not on all models) **DO NOT** remove foam cushion from underside of powerhead until installation is complete.

Note: To complete installation of your garage door opener (rail and powerhead) please refer to and continue with Step 3 on the "Assembly and Installation Poster" of the Genie® Powerhead instructions.