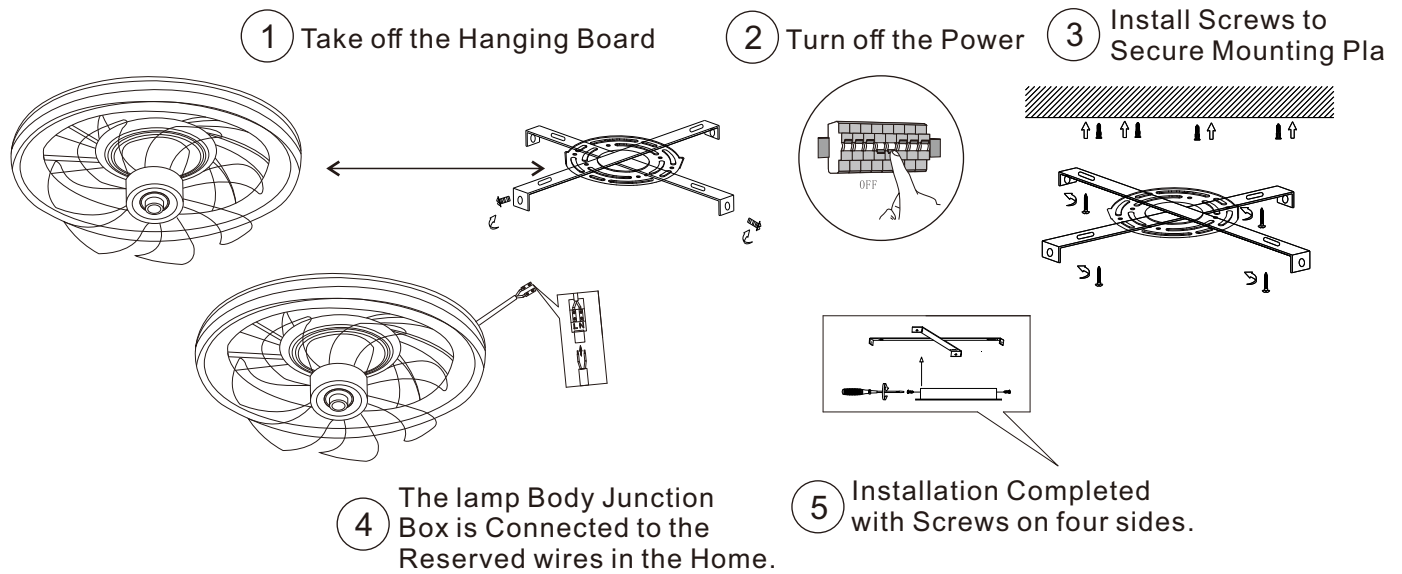


Fan light installation Diagram



EN These instructions are provided for your safety. It is very important to read the instructions carefully before installation

Installation and safety instructions

1. Read this information carefully and keep it for future reference. If you have any doubts, get in touch the shop.
2. Lighting fixtures are mounted and installed only by qualified personnel.
3. Install in accordance with current EC regulations. The connection to the power source must only be carried out by qualified personnel.
4. Defects resulting from improper installation will not be accepted as warranty claims, not we are not responsible in any way for the consequences of this type of defects,
5. Based on health and safety rules, you must not convert (CE) or modify the light fixtures in any way. Failure to follow this instruction will void the warranty.
6. Do not install the lamps on flammable surfaces, wet or on surfaces with good electrical conductivity.
7. Carefully identify the power cable and check that there are no other cables in the area, to avoid possible injuries that may occur during installation,
8. Support the lamp so that it does not strain the cables when making the electrical connections; if necessary, ask for the help of another person.
9. Each material requires specific mounting accessories. Use screws and dowels suitable for the material on which the lamp is fixed. Included may be inappropriate.

Careful! Before starting the installation, you must cut off the power supply by disconnecting it from the safety panel.

Electrical connection

1. Use a small screwdriver to connect the cables of the lamp to those of the electrical installation; for loginuse a ruler.
2. Check that all connections are secure and that no wires are left out of the terminal block. Use acertified login block.
3. Check that the insulation of the electrical conductors from the mains is not damaged
4. Install the bulbs respecting the wattage indicated on the lamp label; do not exceed the maximum value stated.

Other important information

- Lamp parts may heat up during use. Do not touch the bulbs and the parts of the lamp around them (eg glass shades, metal parts, etc.) while they are lit. Turn off the light before changing the bulbs, wait until the parts have cooled down enough to avoid possible injuries (risk of burns).
- Always make sure you use the recommended bulb. Observe the recommended maximum power.
- Children must not be allowed to play with the light fixtures.
- Never leave the lamp without bulbs (this prevents someone from accidentally touching the contacts)
- Pay attention to how to store burned-out light bulbs.
- The bulbs become hot and therefore a sufficiently large distance must be kept from easily inflammable materials (e.g. curtains).
- The lamps can only be cleaned after they have been closed and cooled down. Do not allow moisture to come into contact with the lamp, connectors or electrical conductors. We recommend using only a dry, soft cloth. Do not use polish or solvents.
- The guarantee will be granted through the point of sale and will only be valid accompanied by the receipt acquisition. Warranty does not apply to used components, lampshades/glass parts, bulbs, batteries. Defects or technical problems resulting from: misuse, improper installation, failure to follow the instructions for use, transformations/modifications brought to the lighting fixture will not be accepted as warranty claims.

Before Installation:

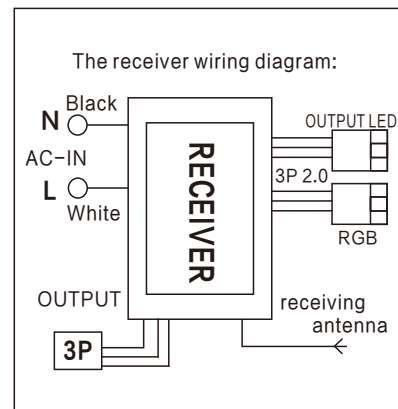
- a) Please do not install any dimmer switch, but it is available to use a simple "on/off" wall switch with the remote.
- b) If you purchased the dimmable ceiling fan and are willing to install a dimmer switch, please do not install this remote. It does not acknowledge installing both controls at the same time.

Installation & Function

- 1.ON/OFF
- 2.Join/Get rid of
- 3.Color temperature switching
- 4.Night lights
- 5.Brightness+
- 6.Brightness-
- 7.Color temperature-
- 8.Color temperature +
- 9.Full pass
- 10.RGB Control
- 11.Fan off
- 12.Fan 1 gear
- 13.Fan 2 gear
- 14.Fan 3 gear
- 15.Fan 4 gear
- 16.Fan 5 gear
- 17.Fan 6 gear
- 18.Positive and cons
- 19.Wind turbine
- 20.Set time



APP



Note: The battery for the remote controller is not included under the safety concern in transit, please use model# "AAA" battery.
*For several ceiling fans, please press the the turn off/on button quickly, the light tone will change immediately.

Re-Program:

- a) Turn Off the main power of the Ceiling fan for 10 minute, then turn On the main power
- b) Press General Off for 5 seconds at the same time
- c) The light will flicker 3 times
Then please try the remote again.

Download Smart Control APP
Scan the QR Code Below



Support IOS and Android

APP and Lamp Pairing Methods

1. iPhone or Android/Huawei can be downloaded and automatically by scanning the QR code on the instructions.
2. iPhone can be downloaded directly by accessing APP STORE and searching Smart Light Control.
3. Android phones can be downloaded directly by entering the application market to search for Smart Light Control.
3. Huawei Mobile Phone can be downloaded directly by accessing APP Treasure and searching Intelligent Light Control.

Functional Instructions



Press this button once in 10 seconds after the lamp has been powered on

After the lamp is electrified, press the SETUP key (code key) on the remote control quickly in 10 seconds. The light flashes indicate the code is successful. Otherwise, turn off the total power supply of the lamp, and then re-operate this step until the light flashes and the alignment is successful.