



### Pergo DuraCraft® + WetProtect® Locking Luxury Vinyl Tile – Floor Installation Instructions

**RADIANT FLOOR HEATING** – This product can be used in combination with many types of in-floor heating. The heating system can be cast in a concrete floor or in a thin layer of filler on the surface of a concrete subfloor. It can also be installed under a wood subfloor or installed on the surface of the subfloor as an electrical matting if it meets the floor flatness requirements.

1. Follow the instructions from the supplier of the floor heating system.
2. Concrete subfloors must be installed and cured with no heat transfer for a minimum of 60 days.
3. The heating system must be in operation for at least two weeks before installation. The system may be turned off or set to a suitable installation temperature (65°F–72°F).
4. The flooring surface temperature, which is the surface of the subfloor or the heat radiating from electric heating mats, should be designed specifically for resilient flooring and should not exceed 85°F (29°C).

**CAUTION** – Excessive floor heating will damage flooring planks.

A moisture test is strongly recommended to determine if high moisture exists in the subfloor. When using a calcium chloride moisture test for concrete subfloors (*ASTM F1869*), values must be less than or equal to 8 pounds / 1,000 square feet / 24 hours or less than 90% RH (*relative humidity*) with an in-situ probe (*ASTM F2170*). Moisture readings of wood subfloors must be less than or equal to 14%. Acceptable jobsite conditions, including subfloor moisture conditions, must be maintained throughout the lifetime of the flooring.

This product is installed as a floating floor only and requires the use of T-moldings in doorways 4 feet (1.22 m) or less and in rooms 40 feet (12.2 m) or larger in length or width. Floor movement must not be constrained by glue, nails, screws, hardware, or other fixed obstructions.

This product must be installed in accordance with these installation instructions.

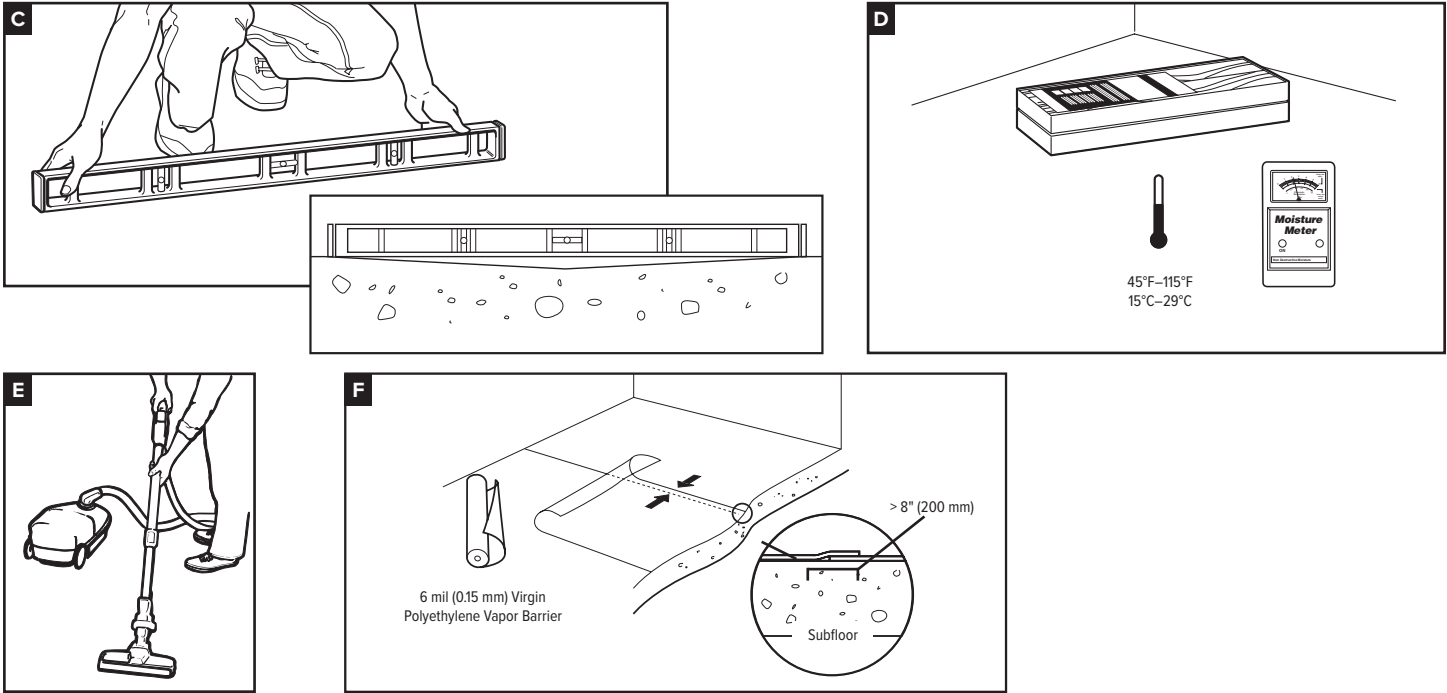
#### Site and Material Preparation



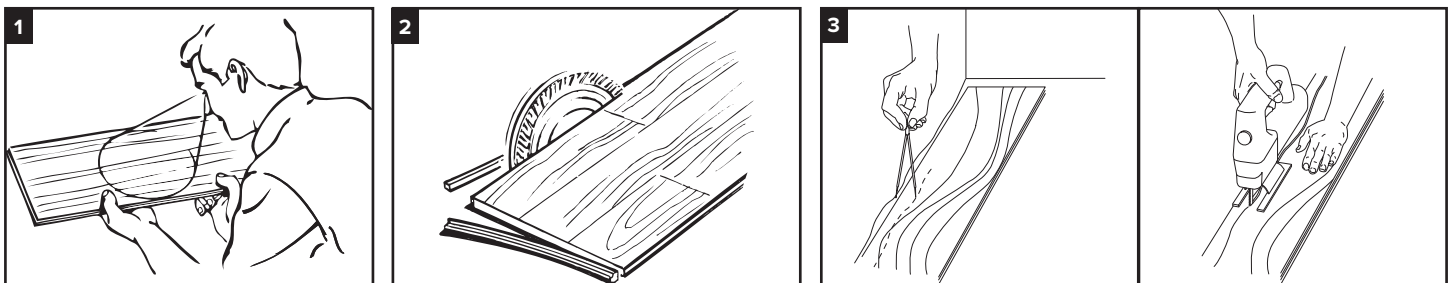
#### Asbestos Warning

Warning! Do not mechanically chip or pulverize existing previously installed resilient flooring, backing, lining felt, asphaltic "cutback" adhesives, or other adhesives. Previously installed resilient floor covering products and the asphaltic or cutback adhesives used to install them may contain asbestos fibers and/or crystalline silica. Avoid creating dust. Inhalation of asbestos or crystalline dust is a cancer and respiratory track hazard. Smoking by individuals exposed to asbestos fibers greatly increases the risk of serious bodily harm. Unless you are positive the installed product is non-asbestos-containing material, you must presume it contains asbestos. Regulations may require that the material be tested to determine asbestos content and may govern the removal and disposal of material. See current edition of the Resilient Floor Covering Institute (*RFCI*) publication "Recommended Work Practices for Removal of Resilient Floor Coverings" for detailed information and instructions on removing all resilient covering structures.

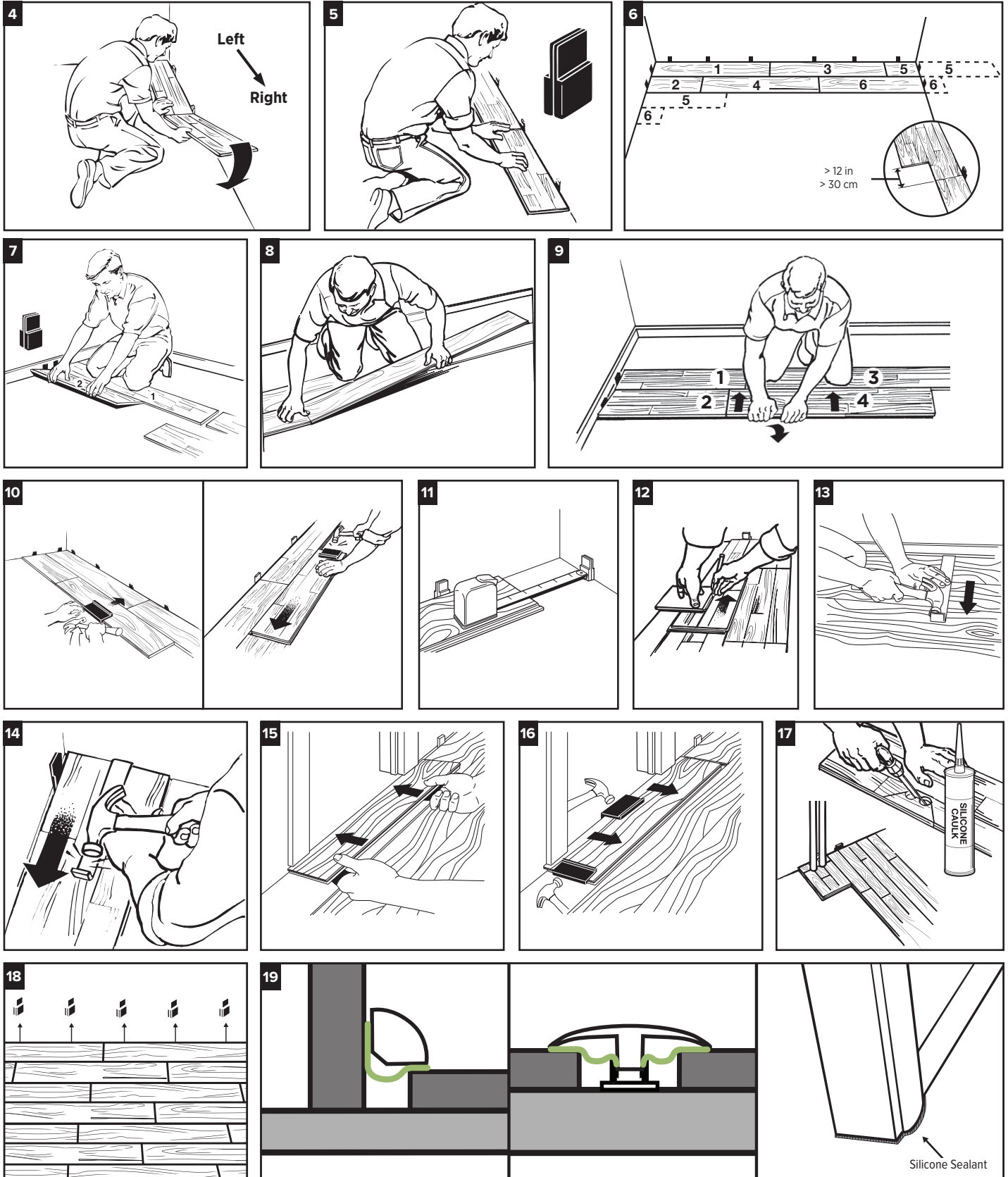
### Pergo DuraCraft® + WetProtect® Locking Luxury Vinyl Tile – Floor Installation Instructions



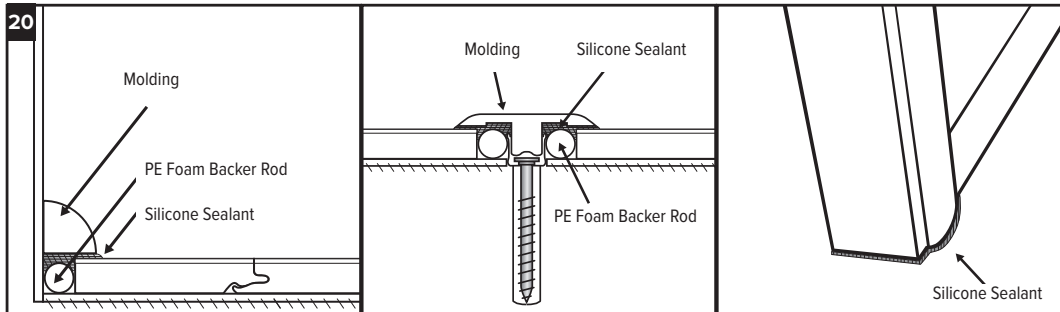
- A. Remove carpet and padding. Also remove any wood flooring installed on concrete. Do not remove products unless they are asbestos-free.
- B. Undercut door casing. Slide the flooring at least 3/8 inch underneath the door casing. Also leave a concealed 3/8-inch minimum expansion space around entire room.
- C. Remove bumps or peaks in subfloor and fill depressions with floor leveling compound to ensure no more than 3/16-inch unevenness per 10-foot span.
- D. If the product is between 45°F and 115°F, no acclimation is required before installation.
- E. Clean debris from subfloor before installation.
- F. A minimum 6 mil polyethylene vapor barrier with a density of 0.92 pounds per cubic foot is required for all installations over concrete. The vapor barrier should have an overlap of 8 inches and should be taped at the seams.



### Pergo DuraCraft® + WetProtect® Locking Luxury Vinyl Tile – Floor Installation Instructions



**Pergo DuraCraft® + WetProtect® Locking Luxury Vinyl Tile – Floor Installation Instructions**



### Flooring Installation

1. Inspect each plank. Floor should be installed by blending planks from several cartons at the same time to ensure good color and shade mixture throughout the installation.
2. For the first row along straight walls, remove the tongue on all long-side joints and on the short side of the first plank only.
3. For uneven walls, trace contour on the tongue side of plank and cut.
4. Between the first row of flooring and the wall, insert spacers so that a 3/8-inch (9.5 mm) gap is created. Assemble the first row, tongue side toward wall. Insert the end tongue into the end groove and rotate downward to assemble.
5. Keep the planks aligned and the joints closed.
6. Start the second row of flooring by using the trimmed planks from the previous row. Provide a 3/8-inch space for expansion on all sides. First piece must be at least 8 inches long. Start new rows with pieces trimmed from previous row. Ensure at least a 12-inch end joint offset.
7. At a slight angle, insert the tongue of plank 2 into the groove of plank 1 until the plank edges meet, and then rotate down until the joints lock.
8. When joining the next plank in the second row, join the short end of the plank first. There will be a gap on the long-side joints when the plank is rotated down.
9. Raise the outside edge of the plank, as well as the first plank in row 2, upward approximately 1 inch. Maintain this angle as you push the plank in until the plank edges meet. Rotate the plank downward until the joint locks. Repeat these steps to complete the installation. Installation Tip: Place a carton of planks across the end of the row being installed to keep installed planks in place during installation.
10. Alternate Tap Method: Align the tongues into the grooves of the long and short sides of the planks. Install the long side first by placing a tapping block no closer than 8 inches from either end and tap lightly along the long side until the joint is closed tightly. Then tap the end into a locked position using the tapping block. Uneven tapping or use of excessive force may damage the joint.
11. Ensure there will be a 3/8-inch gap (after the joint is closed) to the wall for expansion.
12. For the last row, align the plank to be used on top of the second-to-last row. Using a full-width plank as a spacer, trace wall contour and cut plank.
13. For the last row, install the long-side tongue into the groove with the end joint aligned. Using a pull bar and hammer, work evenly along the length of the plank and lightly tap the joint closed.
14. After tapping the long-side joint closed, tap the short side closed, using a tapping block or a pull bar.

#### Installation Under Doorway Casing

15. Slide plank under precut door casing.
16. Tap the long-side joint closed first. Then tap the end joint closed. Allow a 3/8-inch expansion space under the door casing trim.

#### Installation Around Fixed Objects (Such as Pipes)

17. Allow a 3/8-inch expansion space around pipes or other fixed objects.

#### Finishing the Installation

18. Remove all spacers.

**Pergo DuraCraft® + WetProtect® Locking Luxury Vinyl Tile – Floor Installation Instructions**

19. The entire perimeter of the installation must be sealed with the WetProtect® molding system and 100% silicone sealant or PerimeterSeal™ applied in accordance with the installation instructions. PerimeterSeal™ tape may be used to seal floor perimeters, corners, and transitions, as follows. (See *PerimeterSeal™ installation instructions at FlooringAccessories.com.*)
- Apply tape to floor, lining up green field with edge of flooring, meeting the corner with a square-cut end. Then press and seal bottom adhesive edge to floor.
  - Using your fingers, press a “valley” into the flooring expansion space. Then press and seal top adhesive edge to wall.
20. For sections where the WetProtect molding system or PerimeterSeal™ tape cannot be used, seal the perimeter with 100% silicone sealant, as follows. DO NOT use acrylic sealant.
- First, fill all expansion spaces with 3/8-inch compressible PE foam backer rod and cover with silicone sealant.
  - Prior to installing the moldings, apply silicone sealant to the portion of the molding or transition that will contact directly with the flooring surface.
  - Install moldings and immediately wipe away any excess silicone sealant.
  - Apply silicone at connections to doorframes or any other fixed objects.

### Care and Cleaning

Place felt floor protectors under legs of movable furniture. Chair casters should be rubber — not plastic or metal. Chair pads or mats must be used under caster chairs. Place walk-off mats at entrances. Floor protectors should be at least 1 inch in diameter. Dust mop as primary cleaning method. Occasionally wet mop with water only, using a well-wrung-out mop; DO NOT pour liquid directly on floor or use an excessively wet mop that will puddle or leave moisture standing on the floor. If needed, use a solution of 1 cup of vinegar per gallon of water OR nonabrasive neutral pH floor cleaner. Never mix with anything other than water. Follow manufacturer recommendations for safety. DO NOT use detergents, abrasive cleaners, soaps, waxes, or polishes. Use correct hard surface vacuum tools. DO NOT use rotating beater bars, floor scrubbers, jet mops, or similar products. Wipe up spills immediately. DO NOT allow topical moisture to remain on the floor longer than the time specified in the product warranty.

#### WARNING:

- The products in this carton DO NOT contain asbestos or crystalline silica.
- DO NOT MECHANICALLY CHIP OR PULVERIZE EXISTING RESILIENT FLOORING, BACKING, LINING FELT, ASPHALTIC “CUTBACK” ADHESIVES, OR OTHER ADHESIVES.
- DO NOT sand existing resilient tile, sheet flooring, backing, or felt linings. These products may contain asbestos fibers that are not readily identifiable. Inhalation of asbestos dust can cause asbestosis or other serious bodily harm. Check with local, state, and federal laws for handling hazardous material before attempting the removal of these floors.

#### Warranty Conditions

The owner/installer assumes all responsibility for final inspection of product quality. Examine flooring for color, finish, and style prior to installation. If material is unacceptable, contact the seller immediately. Installer should work from a minimum of 3 cartons at the same time to ensure good color and shade blend. The installer must use reasonable selectivity and hold out or cut off pieces with deficiencies. DO NOT install undesirable pieces. Flooring warranties DO NOT cover materials with visible defects once they are installed. Installation is acceptance of product quality.

It is the responsibility of the installer and owner to ensure that jobsite, environmental, subfloor, and subsurface conditions involved meet or exceed all requirements as outlined in installation instructions prior to installation. Manufacturer declines all responsibility for product performance or installation failure due to subfloor, substrate, or environmental deficiencies or jobsite conditions.

For service under the warranty, please contact your local Lowe’s store. Describe the problem, and, in many cases, they can provide you with a solution.

For installation, maintenance, and technical questions, please call 1-800-33-PERGO (1-800-337-3746).