



Shower Rods Buying Guide

The Shower Rod is an easy-to-install, budget-friendly, essential piece of bathroom décor. Kenney® Shower Rods install with Twist & Fit™ No Tools Spring Tension and Twist & Fit™ No Tools Camlock Tension making installation easy and virtually damage free.

Types of Shower Rods



Fluted

Made of heavy-duty steel, the Kenney Twist & Fit No Tools Fluted Shower Rod is coated with a chip resistant material to prevent rust over time.



Fashion

Available in both rust-proof aluminum and rust-resistant steel, the Kenney Twist & Fit No Tools Shower Rod is designed to be both durable and easy to install.



Decorative

Available in both rust-proof aluminum and rust-resistant steel, the Kenney Twist & Fit No Tools Decorative Shower Rod adds a style element in the bathroom.



Curved

The Kenney Twist & Fit No Tools Curved Shower Rod is thoughtfully designed to add six inches of extra space in your shower.

Features to Consider



Rust-Proof vs Rust-Resistant

Rust-Proof vs. Rust-Resistant: What is the Difference?

Shower Rods made from materials such as aluminum are naturally Rust-Proof and will not rust. Rust-Resistant steel shower rods are coated to help prevent rusting overtime.

Spring Tension vs. Camlock Tension What is the Difference?

The main difference between Spring Tension and Camlock Tension is the method in which it is installed. Spring Tension uses a spring tension mechanism that expands and contracts as your walls expand and contract. Camlock Tension uses a locking mechanism to keep the rod at a static length.



Spring Tension



Camlock Tension



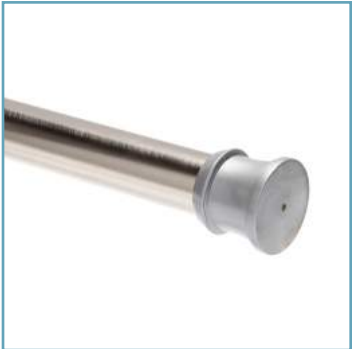
No Tools Installation

Twist & Fit No Tools Technology makes our curtain rods easy to install without tools. No tools and no drilling equals no damage.



Adjustable Length

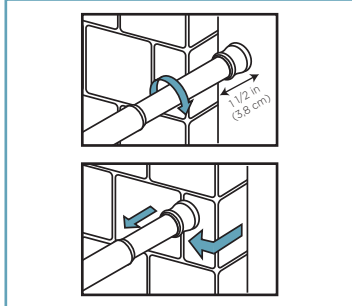
Twist & Fit No Tools Shower Rods are telescoping and the adjustable length is easy to customize based on the length of your shower opening.



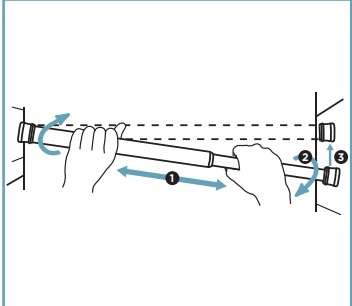
Non-Slip, Non-Scratch End Caps

The non-slip, non-scratch end caps help protect your wall and tile from damage over time.

Installation



Spring Tension



Camlock Tension

Spring Tension Installation

To install, extend rod 1-1.5" beyond the width of your shower opening, then compress the ends of the rod together and release into place to secure.

Camlock Tension Installation

To install, extend against both walls at an angle, twist to lock, and level rod into place.

Choosing the Right Size

Kenney Twist & Fit No Tools Shower Rods are available in a variety of adjustable lengths perfect for standard shower openings or shower stalls. Simply measure the shower opening to determine the best fit.



Stall Shower



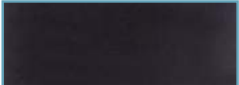
Standard Shower

Available Finishes

Shower Rods are available in a variety of finishes to complement your bathroom décor including White, Black, Brushed Nickel, Chrome, Bronze, and Brass.



White



Black



Brushed Nickel



Chrome



Bronze



Brass