

GAMA SONIC®

SOLAR LIGHTING



MODERN FARMHOUSE SOLAR WALL LIGHT

Part #: 130B50010

 Please read the instruction manual carefully to obtain the best results from your purchase.

Thank you for your purchase! GAMA SONIC® solar charged lights are brighter and last all night with a typical solar charge. Unique design, superior light output and numerous installation options confirm the outstanding value of our product. GAMA SONIC® has been recognized as a worldwide leader in the lighting industry for over 20 years.

Technical Assistance/Warranty Claims/Replacement Parts
Toll Free Number: +1-800-835-4113 (only within the US) or www.gamasonic.com

Visit our website or download the latest version of your instruction manual:
www.gamasonic.com



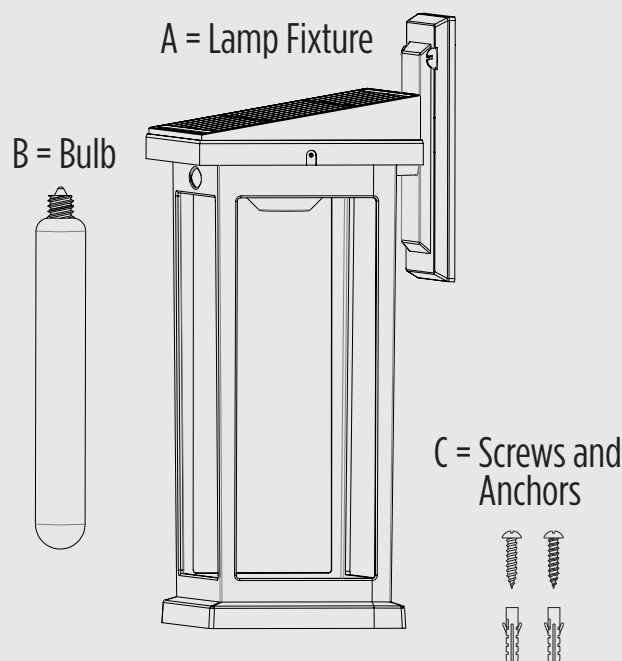
Gama Sonic's Bulb Technology

Gama Sonic's Bulb technology gives your solar lamp the look and feel of a traditional incandescent lamp. This helps to distribute light further than traditional solar lamps.

Solar Lamp Location

For optimum light duration throughout the night, it is very important to mount your solar lamp in a spot where it will receive the maximum amount of direct sunlight throughout the day.

What's In The Box

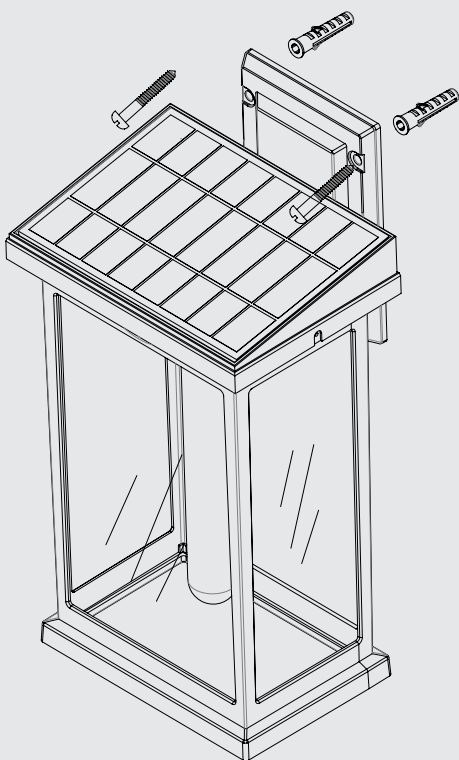


For best results, the solar light must be charged in the "ON" (High or Low) position for at least 2 days of full direct sunlight.

Assembly Instructions

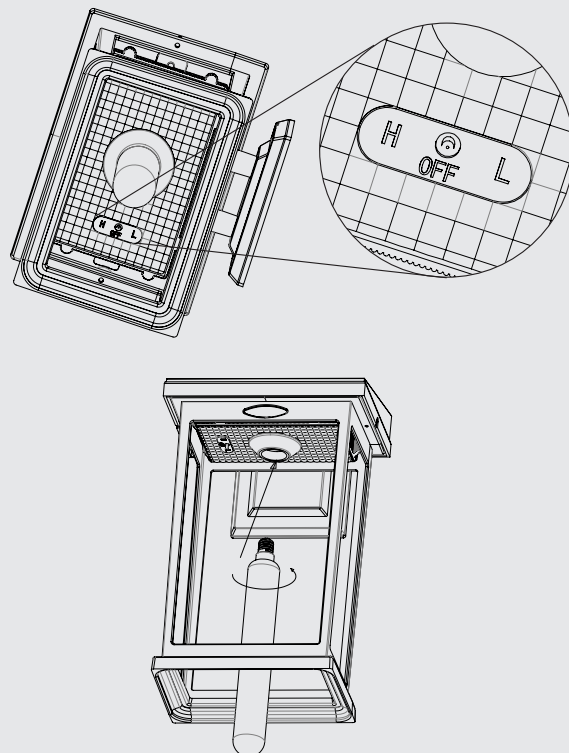
NOTE: The following steps are for reference only. Consult your local hardware store for the best installation method for your surface.

- Make sure the location you are mounting your lamp to allows for direct sunlight to the solar panel and is free of any overhangs or other obstructions.
- Using the lamp as a template, mark where the two holes will need to be made.
- Using a drill, make two holes no larger than the provided anchors.
- Insert the anchors into the holes.
- Line the bracket of the lamp up with the holes and secure using the provided screws.
- Follow the operation Instructions to turn on your lamp.



Operation Instructions

- Switch the lamp to either the low or high position according to your preferences:
 - Low** – softer light and longer duration
 - High** – brighter light output
- Insert the bulb into the fixture and secure by twisting clockwise.
- Your lamp will turn on automatically at dusk.



Replacement Parts

Replacement batteries and bulbs are available at www.gamasonic.com or via our Toll Free number: +1-800-835-4113.

Your lamp can use the following bulbs:

T20LWW04W – included bulb with Warm White LEDs (2700K)

F30WW05W – Flame bulb with simulated flame LEDs

T45WW10W – Edison LED Bulb with Warm White LEDs (2700k)

Your lamp uses the following battery:

GS32V30

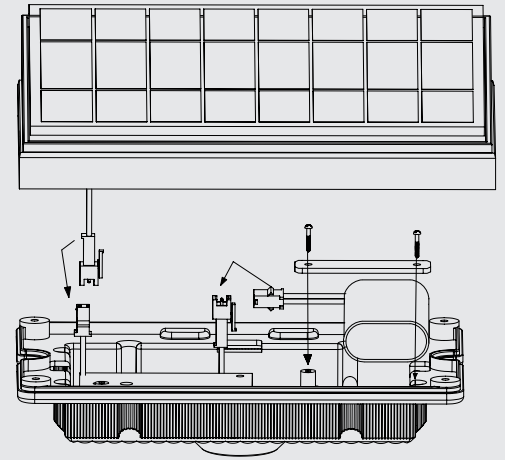


Replacing the Batteries

GAMA SONIC®
SOLAR LIGHTING

After several years of use, the battery may need replacing.

1. Remove the lamp from the wall.
2. Switch the lamp to the OFF position (this require removing the bulb first).
3. Remove the two screws holding the solar panel in place and disconnect the solar panel.
4. Remove the battery bracket by removing the two screws.
5. Unclip and remove the battery.
6. Make sure the new battery is a high-quality Li-Ion battery with matching connector, Part# GS32V30.
7. Clip in the new battery and secure using the battery bracket and screws.
8. Clip the solar panel to the lamp and secure using the two screws.
9. Switch the lamp back ON to your desired setting, re-install the bulb if it was removed, and secure the lamp back to the wall.



Batteries are available for purchase at www.gamasonic.com

MAINTENANCE

Clean the solar panels regularly with a damp towel to guarantee optimum performance. Do not use any type of solvent for cleaning and be careful not to put too much pressure on the solar panels while cleaning.

TROUBLESHOOTING

If your solar light does not come on as expected despite observance of all the instructions, please try the following steps:

1. Make sure that the solar lamp is not being affected by any other light source.
2. Ensure the solar lamp is not positioned in the shade during the day.
3. Check that the batteries are installed correctly.

NOTE: The performance of the solar lamp will vary with the time of year. It will last longer when it has had a full day in the sun rather than a day in overcast weather.



WINTERTIME TIPS: For optimal performance, be sure to remove any snow or debris accumulation from solar panel(s). A solar panel free of debris will charge the batteries much more efficiently.



WARNING: Please keep out of reach of children. Do not dispose of Li-Ion battery in the regular trash, municipal waste stream or by fire as batteries may leak or explode. Do not open, short circuit, or mutilate batteries as injury may occur. Preserve our environment by recycling Li-Ion batteries or disposing of them in accordance with local, state and federal regulations. Do not mix old and new batteries.

