

BlueDri PRO

**PRO AXIAL
AIR MOVER**

BD AXIAL-25

1/4 HP

**OPERATION
SAFETY
SERVICE
WARRANTY
CONTACT
SPECIFICATIONS
TROUBLESHOOTING**



STACKABLE



2 SPEEDS



LOW 3 AMPS



**POWERFUL
SEALED MOTOR**



**25 FOOT
CORD**



Please **READ** and **UNDERSTAND** this **MANUAL** carefully before using the product in order to **REDUCE** the **RISK** of **INJURY**. **SAVE** this manual for instructions.

Table of Contents

Safety	3
GFCI Protection and the On-Board Duplex Outlet	3
Operator Panel Features	4
Introduction	5
BD AXIAL-25 Air Mover	5
Power Requirements	5
Item & Description	6
Specifications	7
Service	7
Limited Warranty	7
Troubleshooting	7
Warranty Registration	8

Safety

- Do not operate any fan with a damaged cord or plug. Discard fan or return to an authorized service facility for examination and/or repair.
- Never place your face, hands, or other susceptible body parts in the air stream, inlets, or outlet of this device.
- To avoid electric shock, do not operate the unit in pooled water.
- The motor must be kept dry at all times. If the unit becomes wet, thoroughly dry it before the next operation.
- Use only a grounded plug or extension cord to avoid risk of electric shock or fire.
- Never use a cord showing any kind of damage or wear.
- Make sure the power source is sufficient to meet the requirements of the air mover.
- Do not run cord under carpeting. Do not cover cord with throw rugs, runners, or similar coverings. Do not route cord under furniture or appliances. Arrange cord away from traffic area and where it will not be tripped over.
- To prevent the unit from overheating, keep all air intake vents clear at all times.
- Clogging or blocking the air intake vents could result in a fire or electrical hazard.
- Do not remove any screens or safety guards from the unit.
- Do not operate the unit close to any dangerous areas, such as explosive gas, flammables, heaters and unventilated environments
- Do not use aftermarket speed control devices.
- Do not use unit if showing damage.
- Before cleaning or servicing, unplug the unit.
- Unplug unit when not in use.
- Do not allow children to play with or near the unit.
- Do not sit or stand on the unit.
- Make sure that hands are dry before handling the unit or power cord.
- All units must be monitored while in use
- Only a qualified electrician should attempt to repair/ replace any electrical components.
- This product employs an GFCI. If the GFCI is de-activated, this indicates an arcing fault, unplug and check the supply cord and product. If no damage is visible, reset the device by pressing the reset button. If the GFCI de-activates again, a hazardous condition may be present and the product should be discarded or returned to an authorized service facility for examination and/or repair.
- This appliance is provided with a protective device that may make the appliance inoperable under some abnormal conditions. If the appliance becomes inoperable, discard the appliance or return the appliance to a service center for examination and repair.

GFCI Protection and the On-Board Duplex Outlet

The standard AC voltage outlet GFCI (Ground Fault Circuit Interrupter) promotes operator safety in wet applications. GFCI devices trip when a fault to electrical ground is sensed. It is recommended to check the GFCI protection prior to operation. To check, push the "TEST" button located on the GFCI duplex outlet will pop out. If operating properly the "RESET" button on the GFCI outlet will pop out. Depending on your Air Movers specific equipment, a tripped GFCI may be indicated by a small LED. The device can only be "RESET" when the Centrifugal Air Mover is connected to a wall outlet providing standard voltage. This duplex AC outlet allows the inter-connection of other AC powered devices. The sum total amperage of all devices (excluding the first fan) plugged into the receptacle must not exceed 8.4A

Operator Panel Features



Run Time Hour Meter

The operator interface panel is equipped with an Automatic LCD Hour Meter. The Hour Meter displays cumulative run time to ensure accurate time tracking. The Hour Meter is not resettable and cannot be erased.

Resettable Circuit Breaker

The thermal response resettable circuit breaker protects the unit and connected daisy chained devices.

The circuit breaker is designed to sense the total current drawn through the circuit. When more than 12 amps of electrical current are drawn through the unit's power cord, the circuit breaker trips.

G.F.C.I [Ground Fault Circuit Interrupter] protection promotes operator safety during applications.

G.F.C.I. devices "trip" when a fault to the electrical ground is sensed. A tripped G.F.C.I. can be reset only when the unit is connected to a wall outlet providing standard voltage. Reset the tripped G.F.C.I. by pressing the "RESET" button.

Warning!

The total amperage of the BD AXIAL-25 Air Mover plus all other devices plugged into the receptacle must not exceed 12 amps.

Introduction

Your new BD AXIAL-25 Air Mover is engineered for maximum performance through innovative design, space efficiency and low amperage draw. The built-in adjustable feet allow the BD AXIAL-25 to be used at a level horizontal angle or to be positioned at a downward 6 degree angle for more concentrated air-flow.

BD AXIAL-25 Air Mover

- Delivers over 3300 CFM of directional air flow.
- Daisy Chain Capable, up to (4) four units with an on-board G.F.C.I. Outlet.
- 360 Degree Positioning with Optional Stand.
- Lightweight (30 lbs) & Stackable up to 5 units.
- 25ft Cord Wrap Assembly.
- Integrated Hour Meter.
- Ergonomic Handle for Easy Handling.
- Power Indication Lamp to visually identify operation status from a distance.

OVER CURRENT PROTECTOR SWITCH

BALANCED CARRYING HANDLE

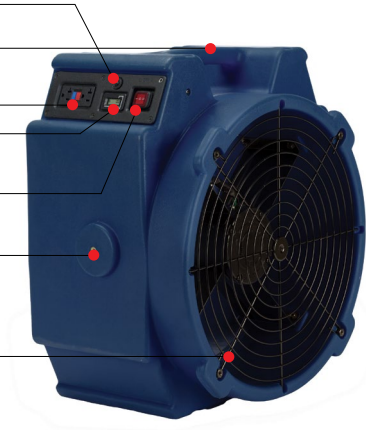
DAISYCHAINABLE WITH GFCI

HOUR METER

2-SPEED TOGGLE SWITCH WITH
LED POWER INDICATOR

BUILT-IN MOUNTING LUG NUT
FOR OPTIONAL STAND

GRILL



Power Requirements

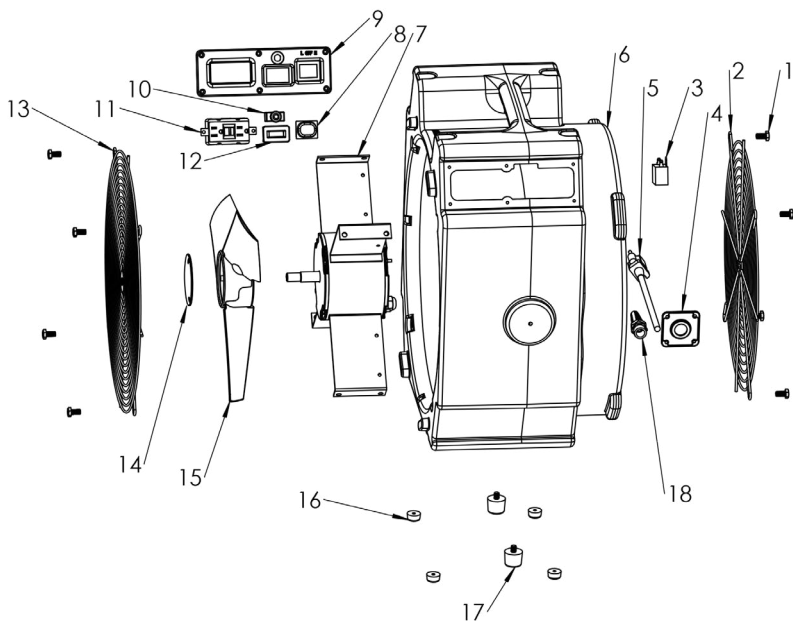
Daisy Chaining

The BD AXIAL-25 Air Mover draws 3 amps. The 12 amp on-board circuit breaker will allow four (4) BD AXIAL-25 Air Movers on one (1) circuit.

Cords

Use 3 pronged adaptors that are UL and CE approved and no less than 14-3 with Ground Fault Circuit Interrupter (G.F.C.I.).

Do not use cords that show any kind of wear or damage. Cords are not covered by warranty.



ITEM	DESCRIPTION
1	Screw
2	Outlet Grill
3	Capacitor
4	Plate for Cord Connector
5	Power Cord
6	Fan Housing
7	Motor
8	Switch
9	Control Panel
10	Over Current Switch
11	GFCI
12	Hour Meter
13	Inlet Grill
14	Blade Cover
15	Blade
16	Rubber
17	Rubber
18	Cord Connector

SPECIFICATIONS

Motor 1/4 HP
Amps 3 AMPS
Speeds 2
Certification C-ETL-US
Stackable Yes
Voltage 115V
Cycle 60Hz
Wheel Speed (RPM) L 1650 / H 1750
Attached Cord 25' (FT) 14 AWG

Service

In order to receive service or replacement parts under warranty, you must:

- A. Call for an RMA (Return Merchandise Authorization Number).
- B. Have proof of purchase.
- C. Ship to BLUE DRI PRO.

Upon inspection, we will advise you of the repairs needed and the cost (if applicable).

Blue Dri Pro will issue repair or replacement parts depending on warranty.

Limited Warranty

Warranty covers against defects in material and craftsmanship used under normal intended use to original purchaser for a term of 2 years from the original date of purchase including parts, labor and 1 way shipping. Housing is covered for a term of (5) five years from the date of the original purchase.

Important!

Warranty does not cover signs of misuse including, but not limited to rough handling, abuse, tampering, improper voltage use and un authorized maintenance and repairs.

Troubleshooting

PROBLEM	POSSIBLE CAUSE	SOLUTION
Motor Not Running	<ol style="list-style-type: none"> a) Switch is OFF b) Bad Outlet c) Faulty Switch/Cord 	<ol style="list-style-type: none"> a) Turn Switch ON b) Check Outlet/ Change to Another Outlet c) Call Factory for new Switch/Replace Cord
Scraping Noise From blade	<ol style="list-style-type: none"> a) Fan blade loose 	<ol style="list-style-type: none"> a) Call Factory for Replacement Advise

Thank you for your purchase.



Warranty Registration

ONLINE

Please fill out and submit your warranty form at:

www.bluedripro.com/register



BY MAIL

Please complete, mail or fax your product registration card.

For multiple units, please list serial numbers on a separate sheet.

This warranty card and your bill of sale must be presented for warranty service.

Company name _____

Contact name _____

Title _____

Street address _____

City _____

State _____

Zip _____

Phone _____

Fax _____

Email _____

Product serial number _____

Date of purchase _____

Purchase form _____



550 S Ayon Ave
Azusa, CA 91702
844-240-0444
Email: info@bluedripro.com
Website: www.bluedripro.com



SENDER
ADDRESS
HERE

AFFIX
STAMP
HERE

MAIL TO
BLUE DRI PRO
WARRANTY REGISTRATION
550 South Ayon Ave
AZUSA, CA 91702