

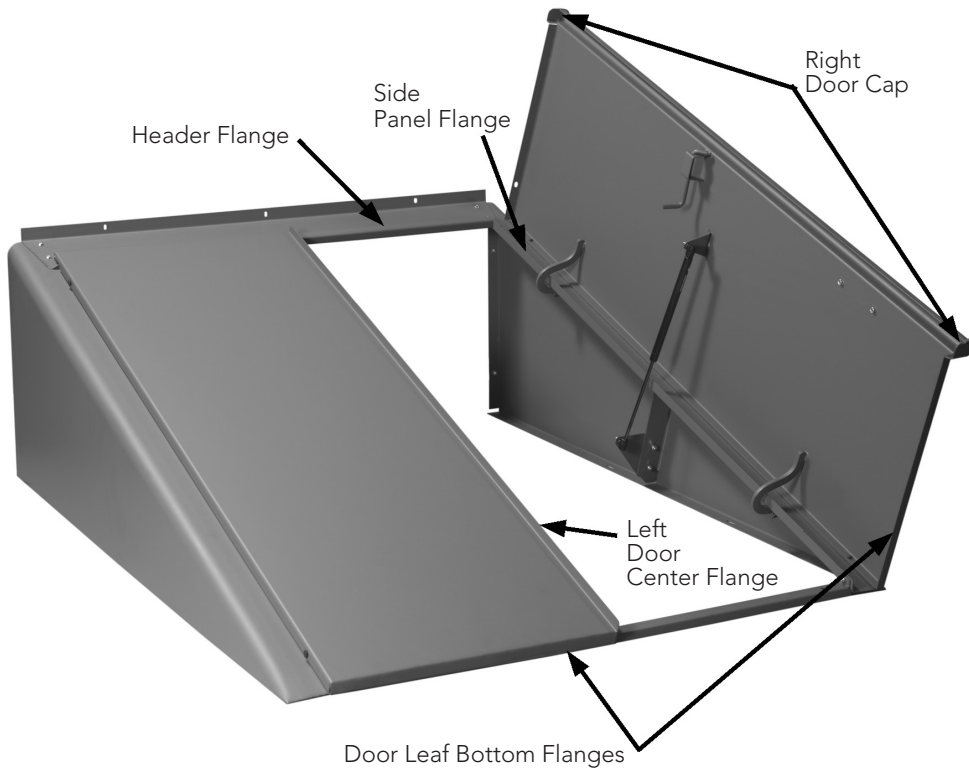


an AmesburyTruth™ company

Experience. Innovation.

Basement Door Weather-stripping Kit

www.bilco.com

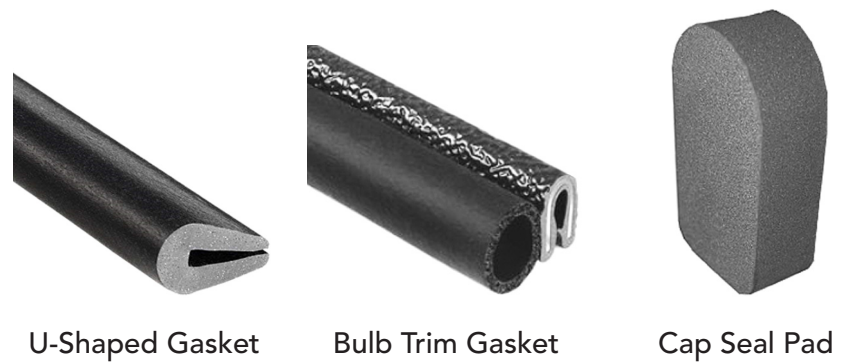


Tools Required:

- Tin Snips or Large Scissors

Parts List:

- U-Shaped Gasket (1 roll)
- Bulb Trim Gasket (1 roll)
- Cap Seal Gasket Pads (2)



U-Shaped Gasket

Bulb Trim Gasket

Cap Seal Pad

Installation Instructions:

The BILCO basement door weather-stripping is supplied on rolls so that the material can be cut to match the exact dimensions of your basement door. Simply follow the instructions below for gasket placement and cut the material to suit your door as instructed.

Step 1 – Installation on Header Flange

Starting on one end as shown in Figure 1, firmly place the “U” shaped weather-stripping on the header flange, feed to the end of the flange, and trim as shown.

Step 2 – Installation on Side Panel Flange

Starting on one end as shown in Figure 2, firmly place the “U” shaped weather-stripping on top of a side panel flange, feed to the end of the flange, and trim as shown. Repeat on second side panel.

Step 3 – Installation on Left Door Center Flange

Starting on one end as shown in Figure 3, firmly place the “U” shaped weather-stripping on top of a center flange, feed to the end of the flange, and trim as shown.

Step 4 – Installation on Door Leaf Bottom Flanges

Starting on one end as shown in Figure 4, firmly place the “BULB” type weather-stripping on a door leaf bottom flange, feed to the end of the flange, and trim as shown. Repeat on second door leaf bottom flange.

Step 5 – Right Door Cap seal Installation

Seals are supplied for installation inside the top and bottom of the right-hand door leaf cap. Peel off the adhesive backing and firmly place each seal into position on top and bottom as shown in Figure 5.

Tired of going inside to unlock your basement door?

Install a BILCO keyed entry lock and save that trip into the basement. The keyed lock kit can be installed in just 30 minutes and is available for purchase on www.bilco.com



Figure 1 – Installation on Header Flange

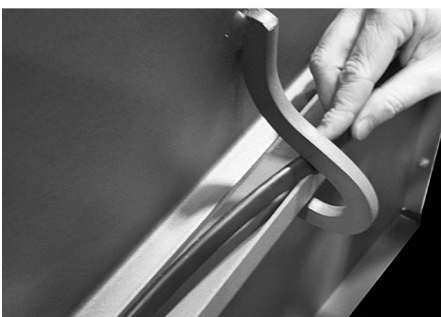
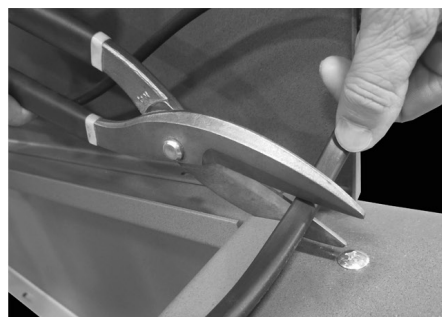


Figure 2 – Installation on Side Panel Flange

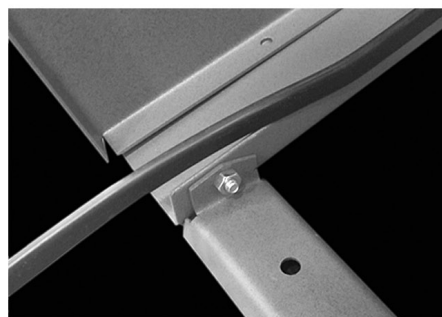


Figure 3 – Installation on Left Door Center Flange

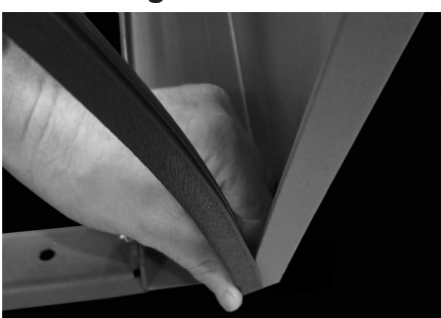
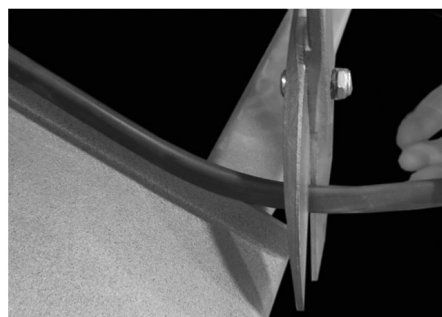


Figure 4 – Installation on Door Leaf Bottom Flanges

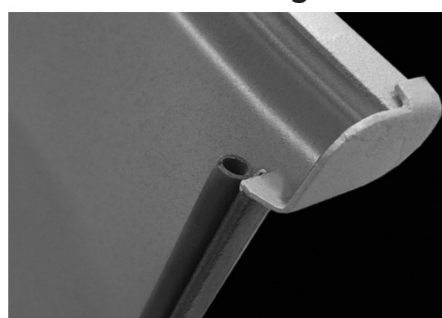


Figure 5 – Right Door Cap seal Installation