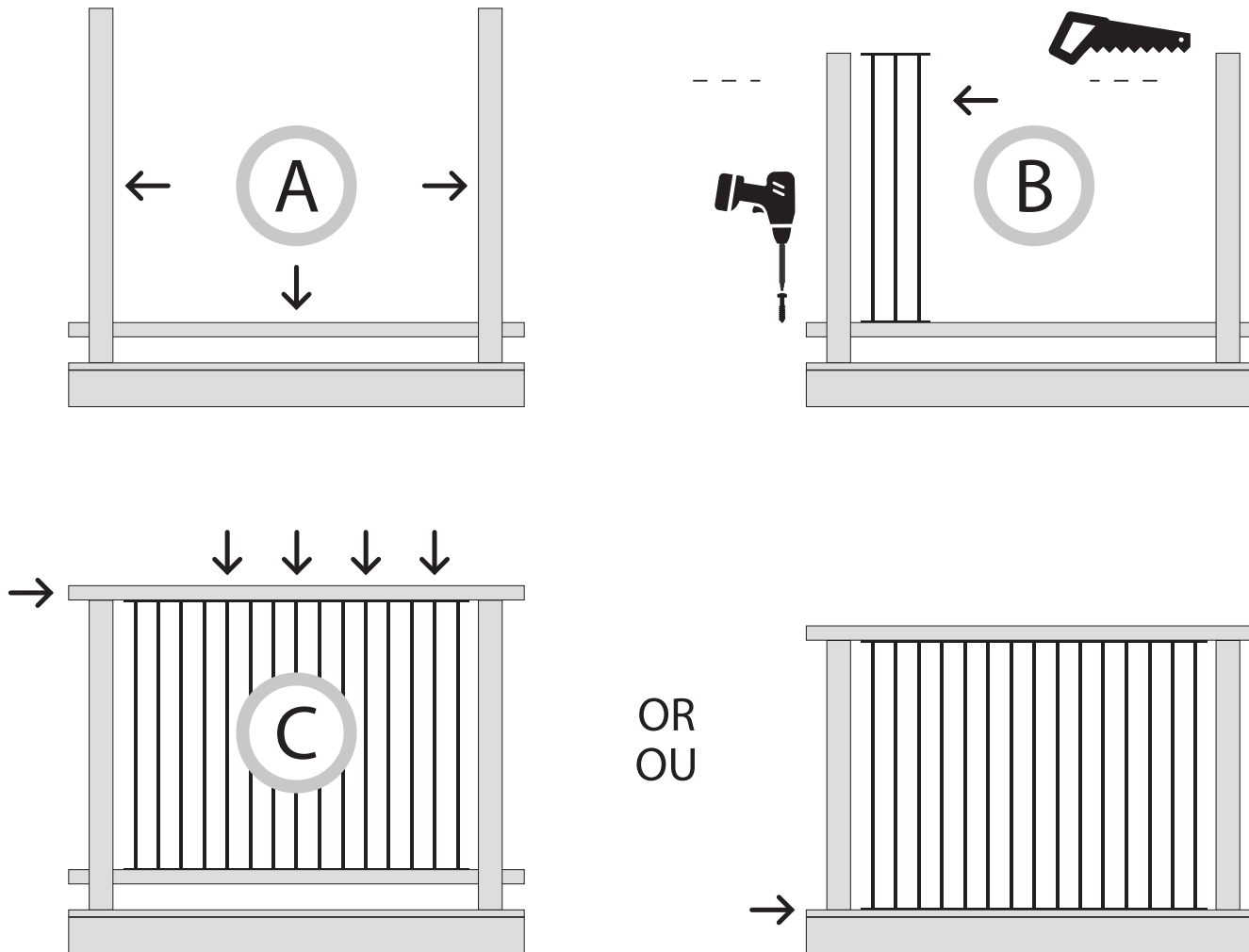


INSTALLATION GUIDE GUIDE D'INSTALLATION

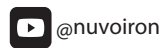
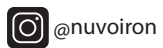
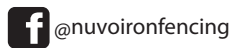
IMPORTANT: Prior to construction, check with your local or regional municipalities for building code requirements in your area. The stair railing panels are not designed to support the hand rail. Correctly installed posts must be used.

IMPORTANT: Avant de commencer la construction, vérifier auprès de votre municipalité locale ou régionale pour ce qui est des exigences en matière de code de construction applicable. Les panneaux de lisses d'escalier ne sont pas conçus pour supporter une main courante. Des poteaux correctement installés doivent être utilisés.

NDRP



nuvoiron.com · 1.866.955.0355 · info@nuvoiron.com



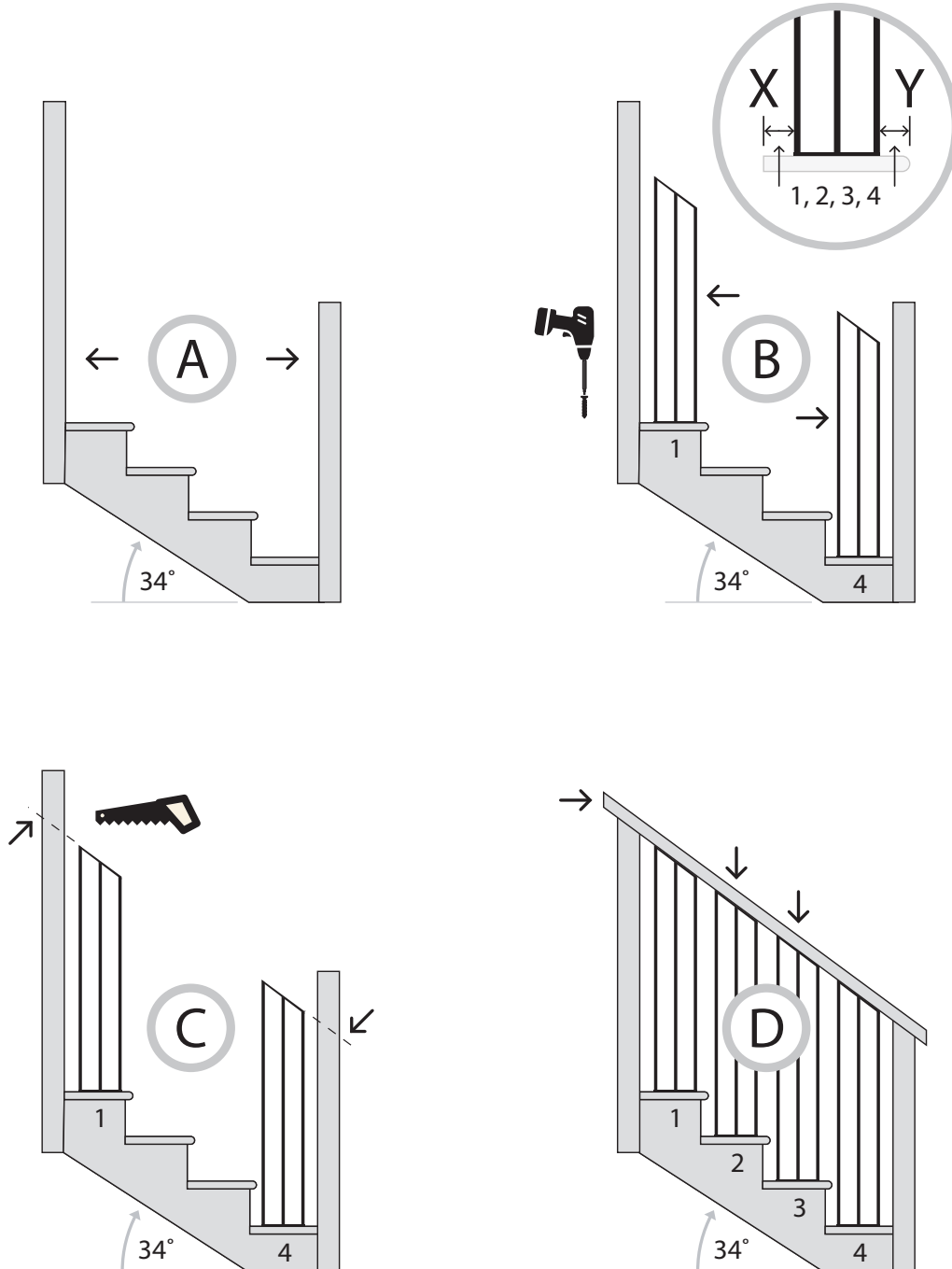
 X 4 INCLUDED / INCLUS

INSTALLATION GUIDE GUIDE D'INSTALLATION

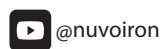
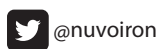
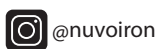
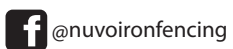
IMPORTANT: Prior to construction, check with your local or regional municipalities for building code requirements in your area. The stair railing panels are not designed to support the hand rail. Correctly installed posts must be used.

IMPORTANT: Avant de commencer la construction, vérifier auprès de votre municipalité locale ou régionale pour ce qui est des exigences en matière de code de construction applicable. Les panneaux de lisses d'escalier ne sont pas conçus pour supporter une main courante. Des poteaux correctement installés doivent être utilisés.

NSRP



nuvoiron.com · 1.866.955.0355 · info@nuvoiron.com



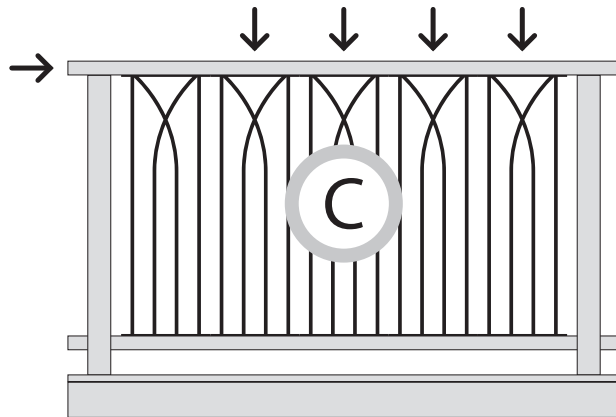
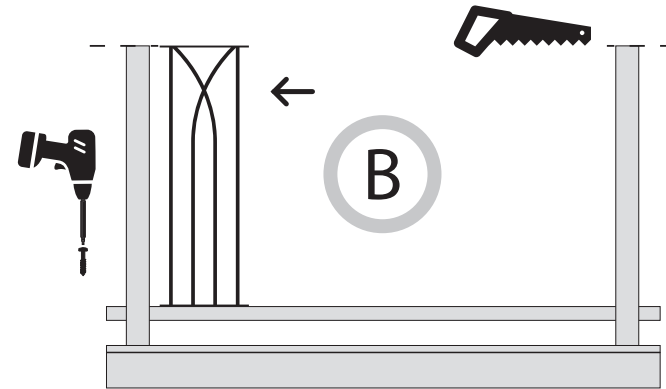
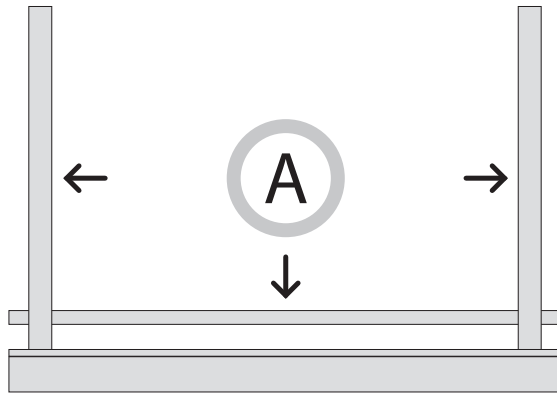
X 4 INCLUDED / INCLUS

INSTALLATION GUIDE GUIDE D'INSTALLATION

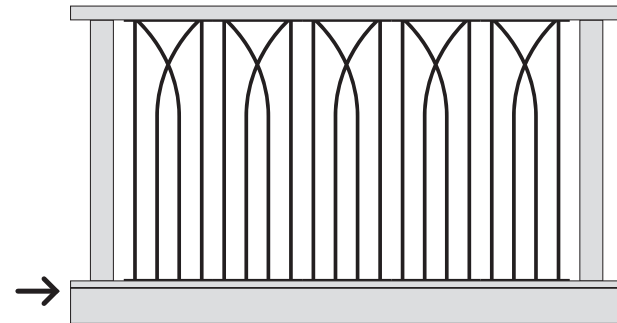
IMPORTANT: Prior to construction, check with your local or regional municipalities for building code requirements in your area. The stair railing panels are not designed to support the hand rail. Correctly installed posts must be used.

IMPORTANT : Avant de commencer la construction, vérifier auprès de votre municipalité locale ou régionale pour ce qui est des exigences en matière de code de construction applicable. Les panneaux de lisses d'escalier ne sont pas conçus pour supporter une main courante. Des poteaux correctement installés doivent être utilisés.

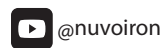
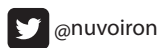
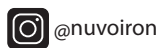
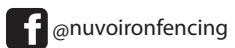
VDRP



OR
OU



nuvoiron.com · 1.866.955.0355 · info@nuvoiron.com



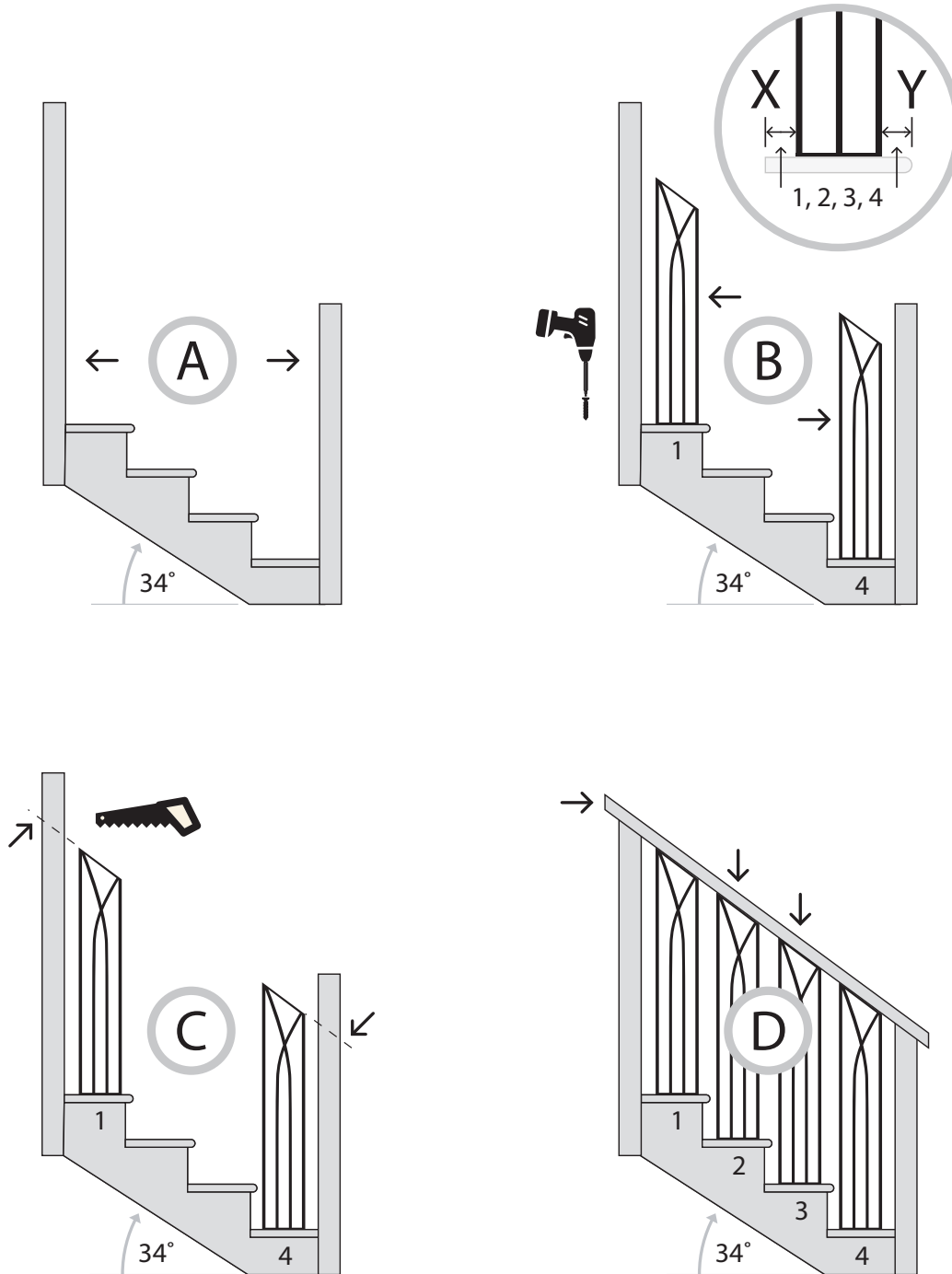
 X 4 INCLUDED / INCLUS

INSTALLATION GUIDE GUIDE D'INSTALLATION

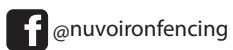
IMPORTANT: Prior to construction, check with your local or regional municipalities for building code requirements in your area. The stair railing panels are not designed to support the hand rail. Correctly installed posts must be used.

IMPORTANT: Avant de commencer la construction, vérifier auprès de votre municipalité locale ou régionale pour ce qui est des exigences en matière de code de construction applicable. Les panneaux de lisses d'escalier ne sont pas conçus pour supporter une main courante. Des poteaux correctement installés doivent être utilisés.

VSRP



nuvoiron.com · 1.866.955.0355 · info@nuvoiron.com



X 4 INCLUDED / INCLUS