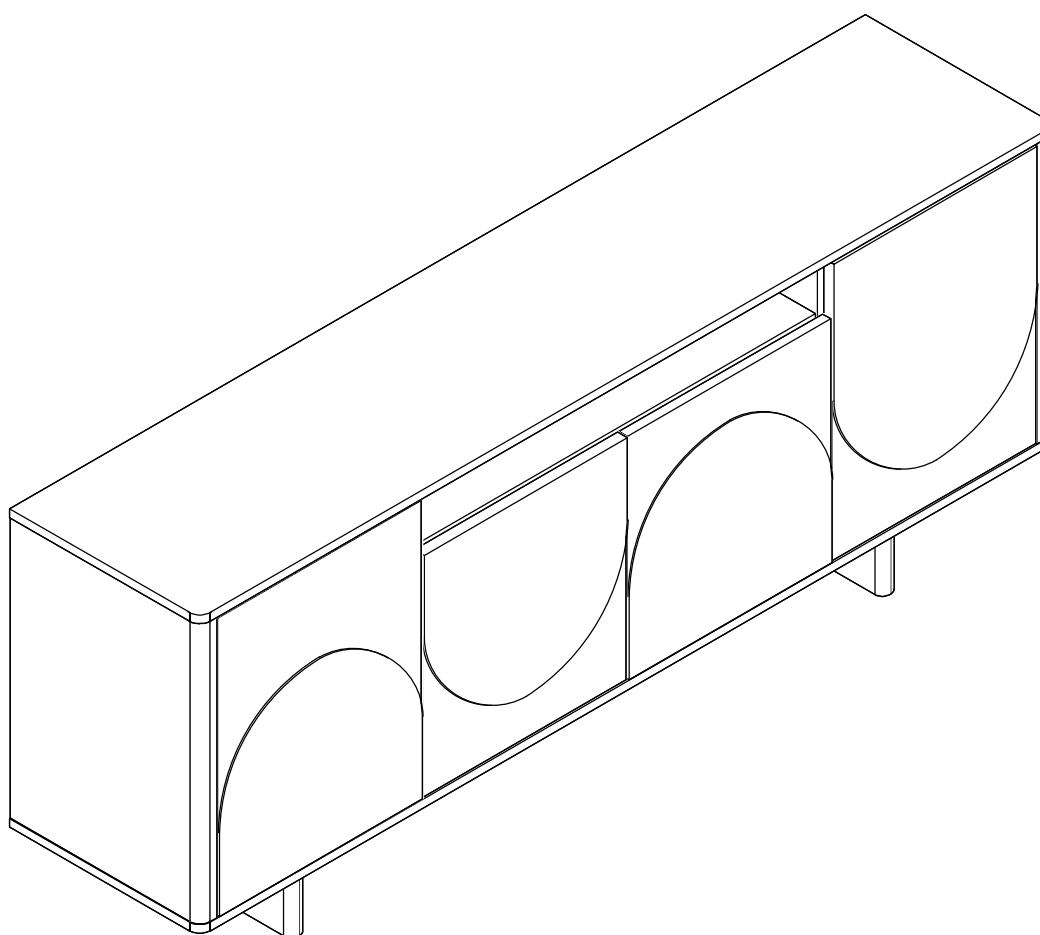


**SB005**



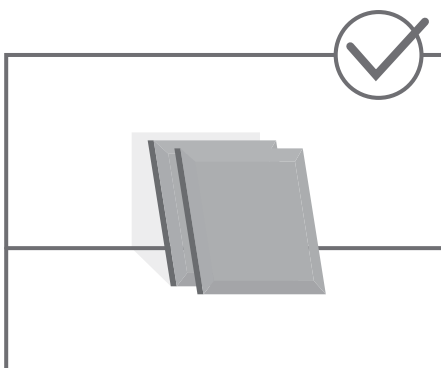
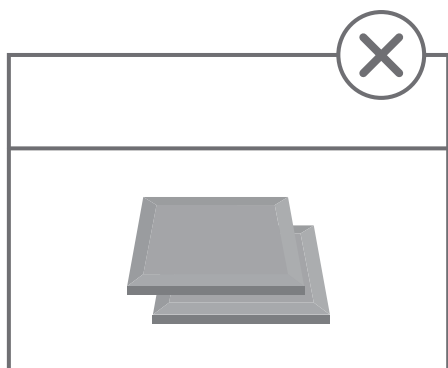
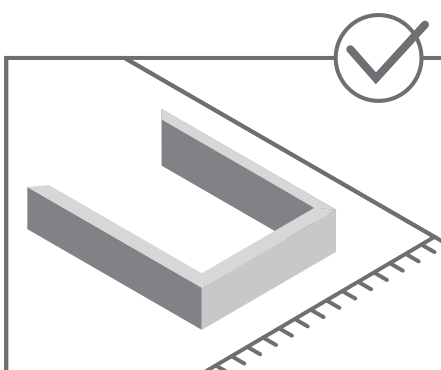
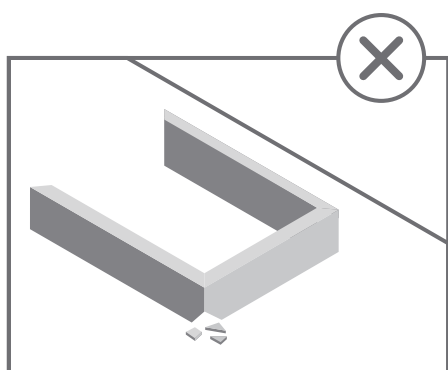


# STOP!

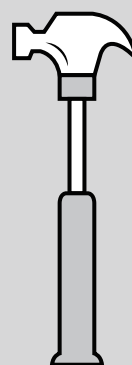
Before beginning the assembly process,  
ensure all boxes and parts have been delivered.

## FOR BEST RESULTS:

- Do not throw away packaging materials until assembly is complete.
- Assemble item on a soft surface, such as cardboard or carpet, to protect finish.
- Proper assembly requires two people.



## TOOLS REQUIRED



View our assembly video online:  
[WWW.MANHATTANCOMFORT.COM](http://WWW.MANHATTANCOMFORT.COM)



Stuck? Question? We are here to help.  
tel: 908-888-0818  
e-mail: [help@manhattancomfort.com](mailto:help@manhattancomfort.com)

Support Site



# Included in this package:

## BOX 01/03

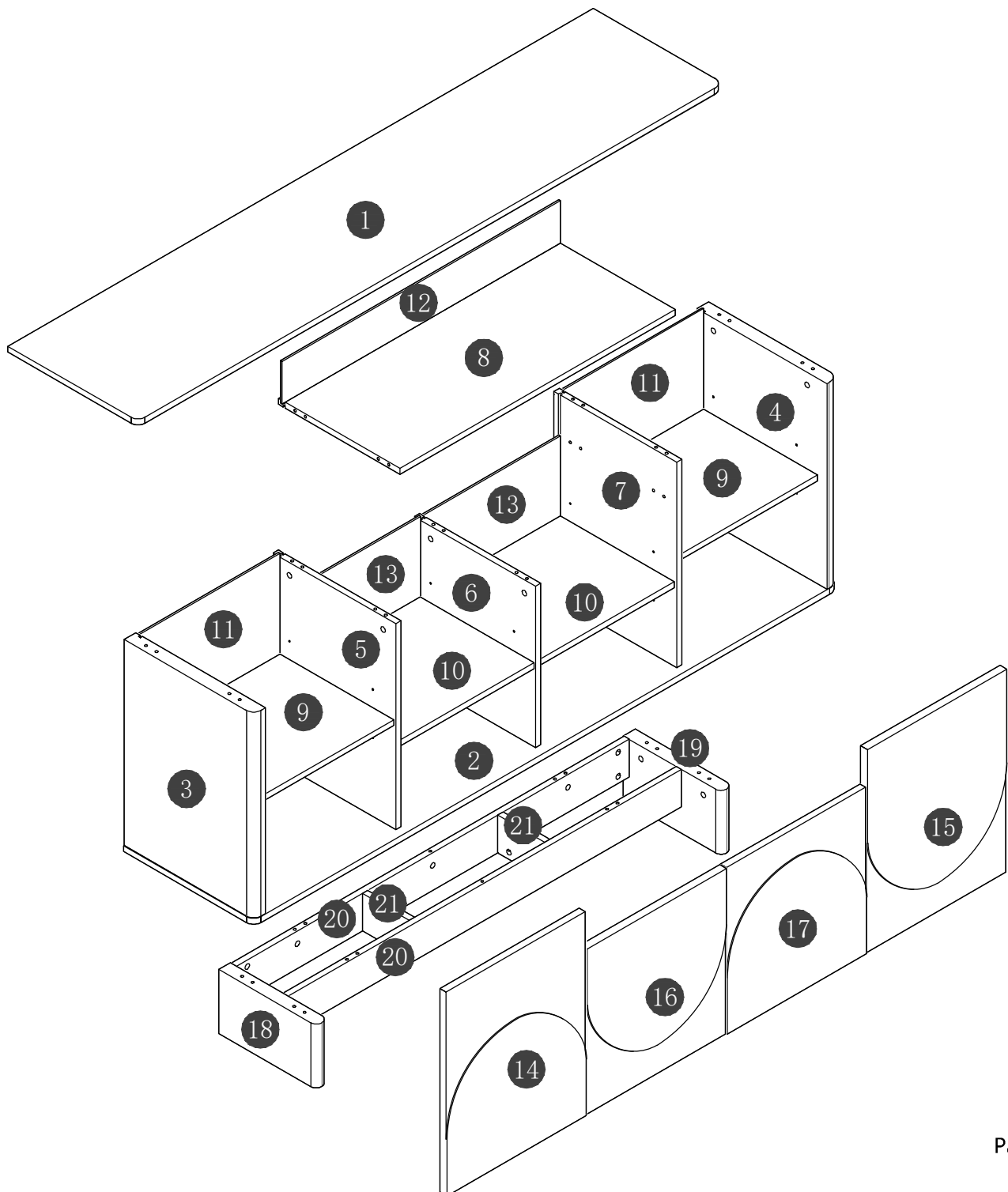
1:TOP(1)  
2:BOTTOM(1)  
6:MIDDLE UPRIGHT(1)  
8:UPPERMOST SHELVE(1)  
10:MIDDLE ADJUSTABLE SHELVES(2)  
12:UPPERMOST BACK(1)  
20:CONNECTING FOR LEGS(2)  
21:SMALL UPRIGHT FOR LEG(2)

## BOX 02/03

11:LEFT &RIGHT BACK(2)  
13:MIDDLE BACK(2)  
14:LEFTMOST DOOR(1)  
15:RIGHTMOST DOOR(1)  
16:LEFT DOOR(1)  
17:RIGHT DOOR(1)

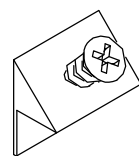
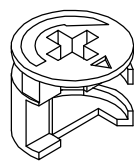
## BOX 03/03

3:LEFT END(1)  
4:RIGHT END(1)  
5:LEFT UPRIGHT(1)  
7:RIGHT UPRIGHT(1)  
9:LEFT&RIGHT ADJUSTABLE SHELVES(2)  
18:LEFT LEG(1)  
19:RIGHT LEG(1)  
HARDWARE ARE IN BOX 03/03

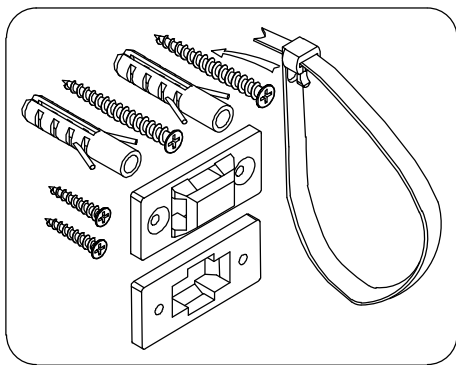


# Hardware Identification

A:BOLT-36pcs M6\*40mm    B:WOODDOWEL-40pcs  $\varnothing 8 \times 30 \text{mm}$     C:GROMMET-36pcs  $\varnothing 15 \times 12 \text{mm}$     D:PVC STICKER-36pcs  $\varnothing 21 \text{mm}$     E:BOLT-20pcs



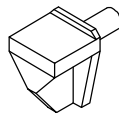
F:BOLT-1sets



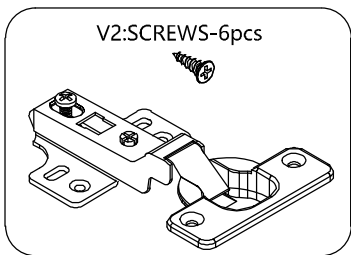
H:SPANNER-1pcs  
M4



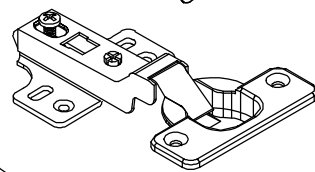
L:BOLT-16pcs



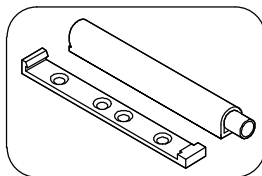
I2:HINGE-4pcs



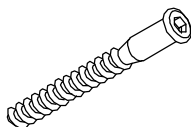
V2:SCREWS-6pcs



REBOUND DEVICE-4pcs



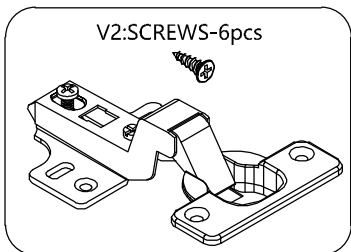
Q:BOLT-10pcs  
 $\varnothing 7 \times 50 \text{mm}$



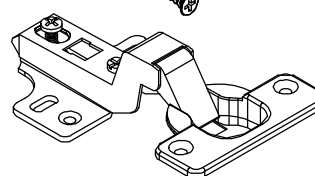
V1:SCREWS-8pcs  
M3.5\*12mm



I3:HINGE-4pcs

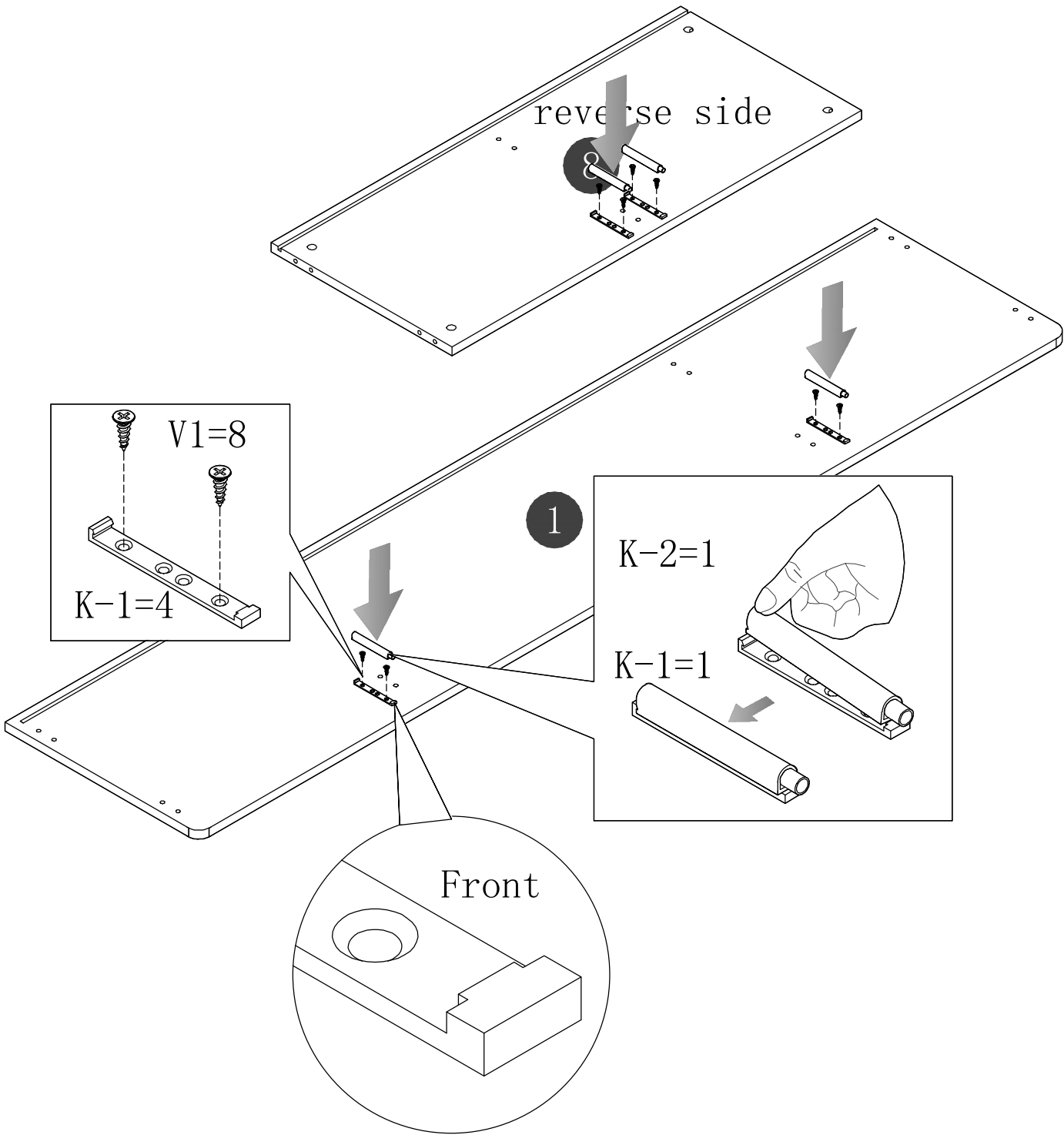


V2:SCREWS-6pcs

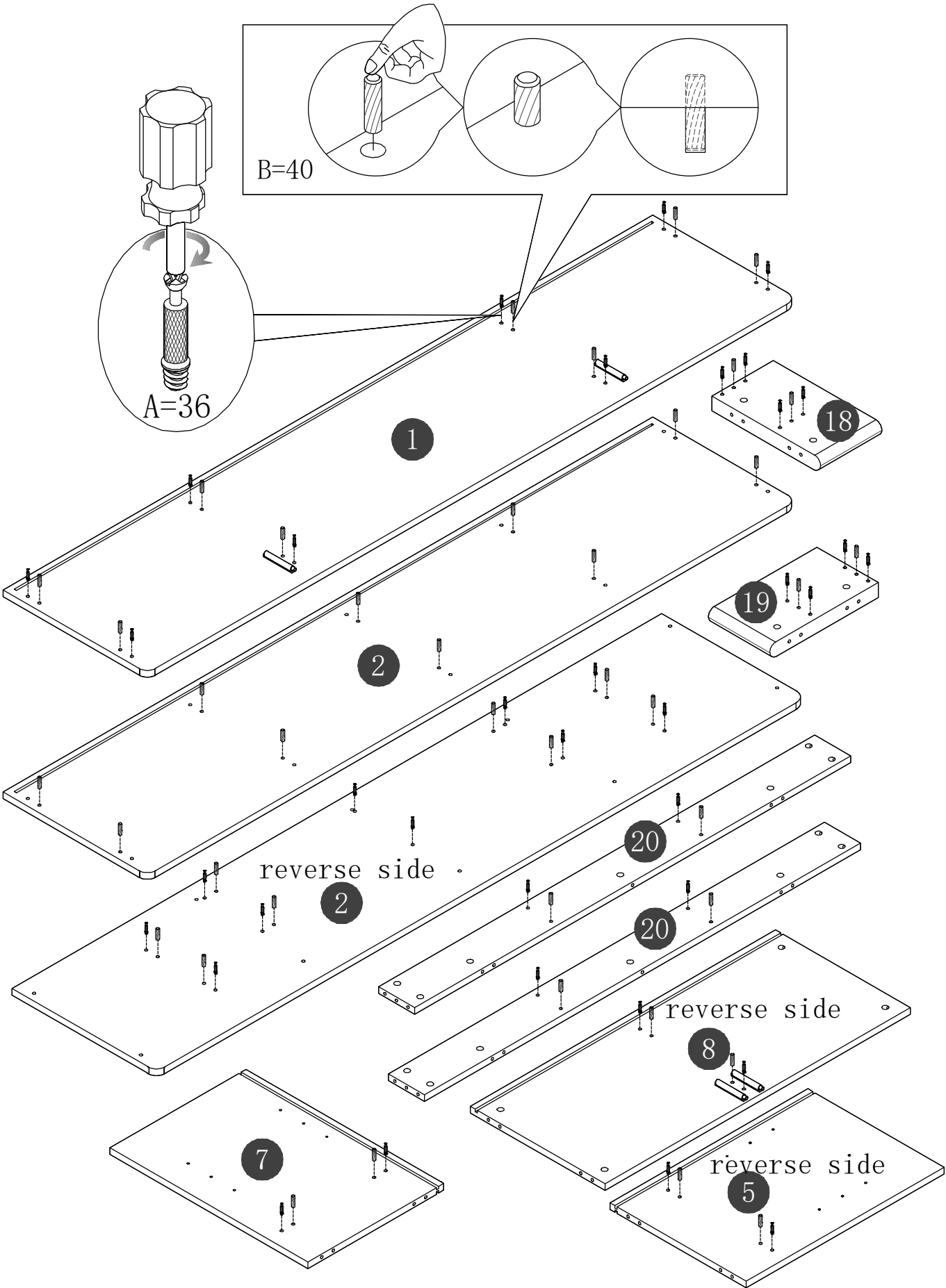


# Step 1

---

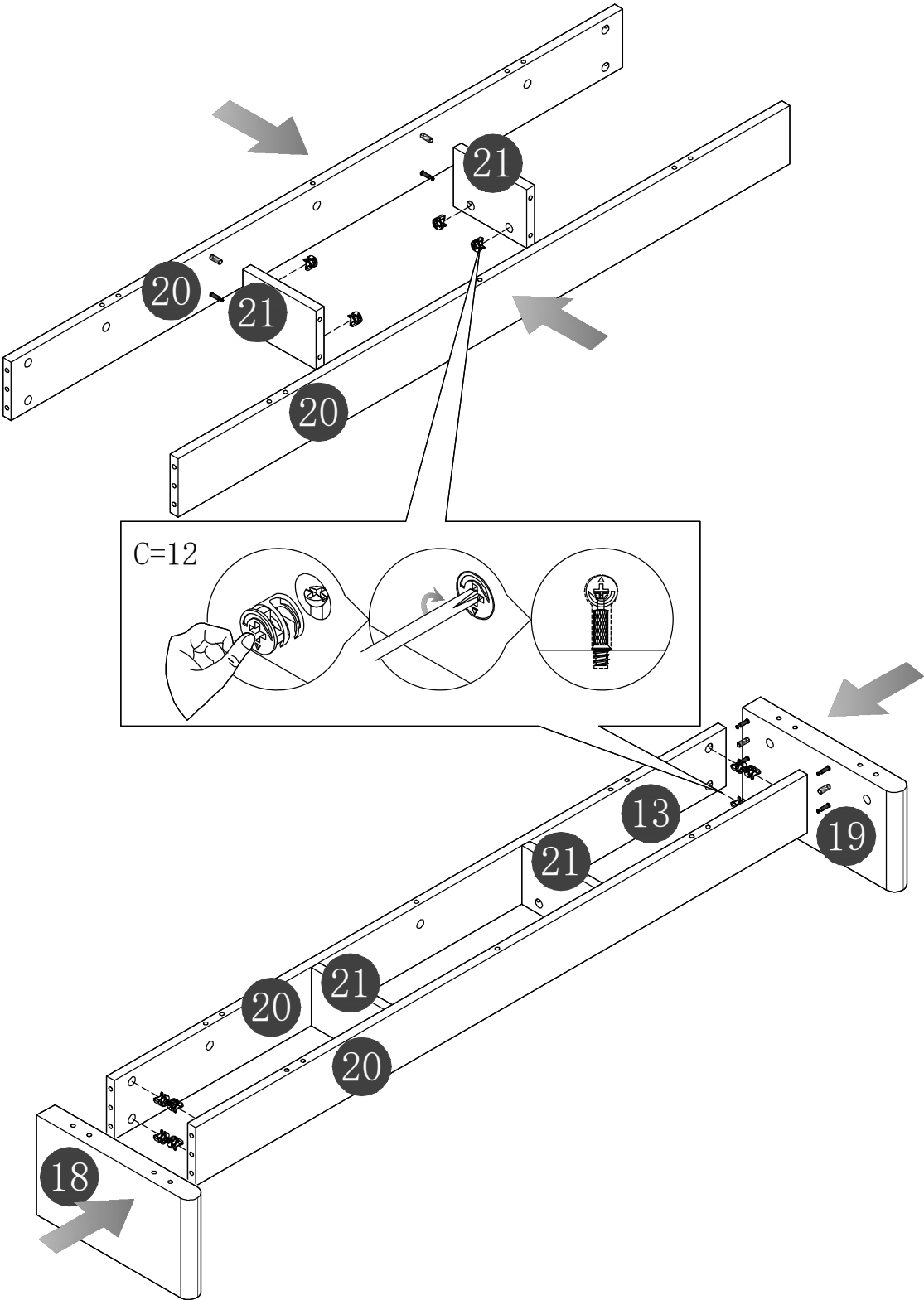


# Step 2



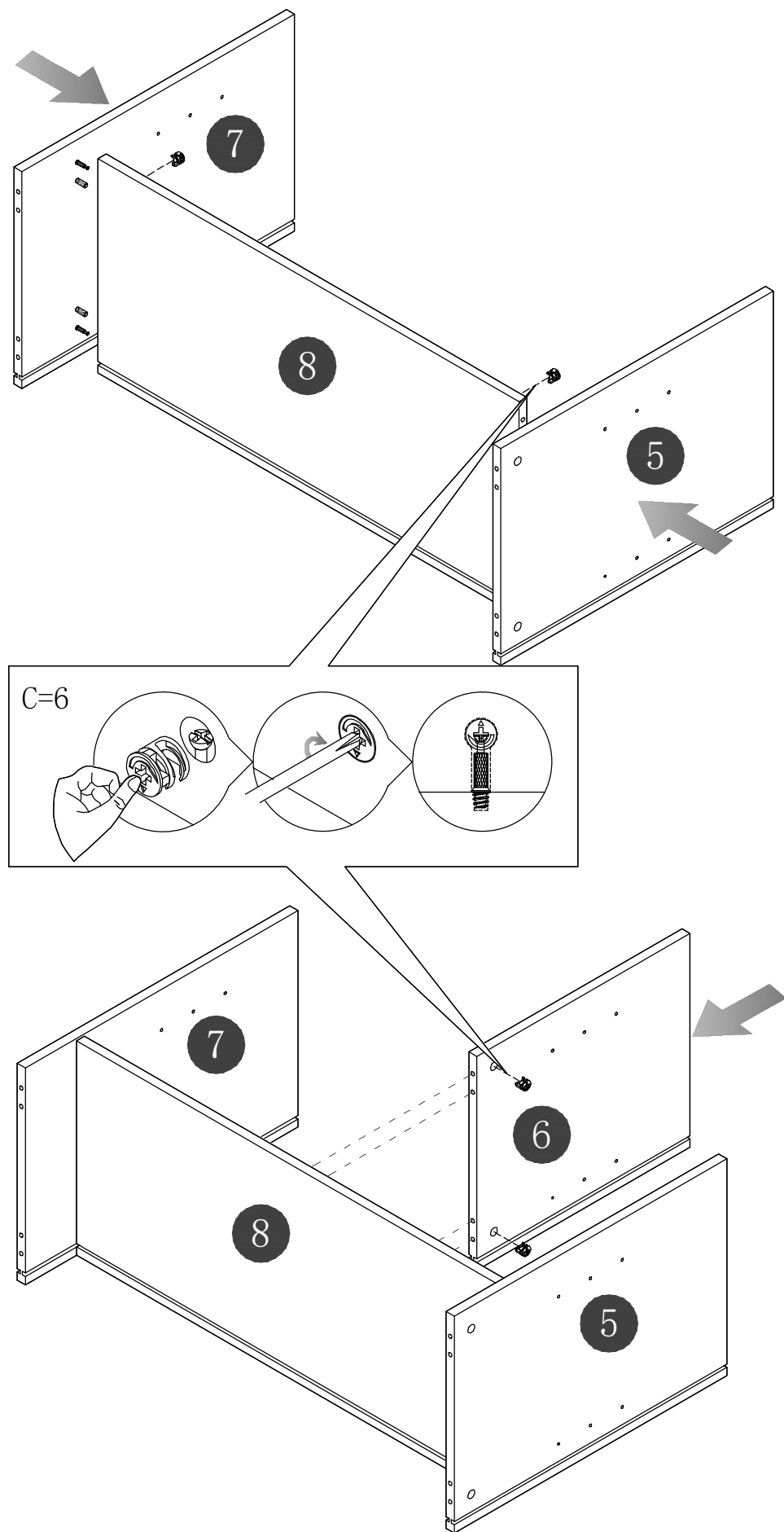
# Step 3

---



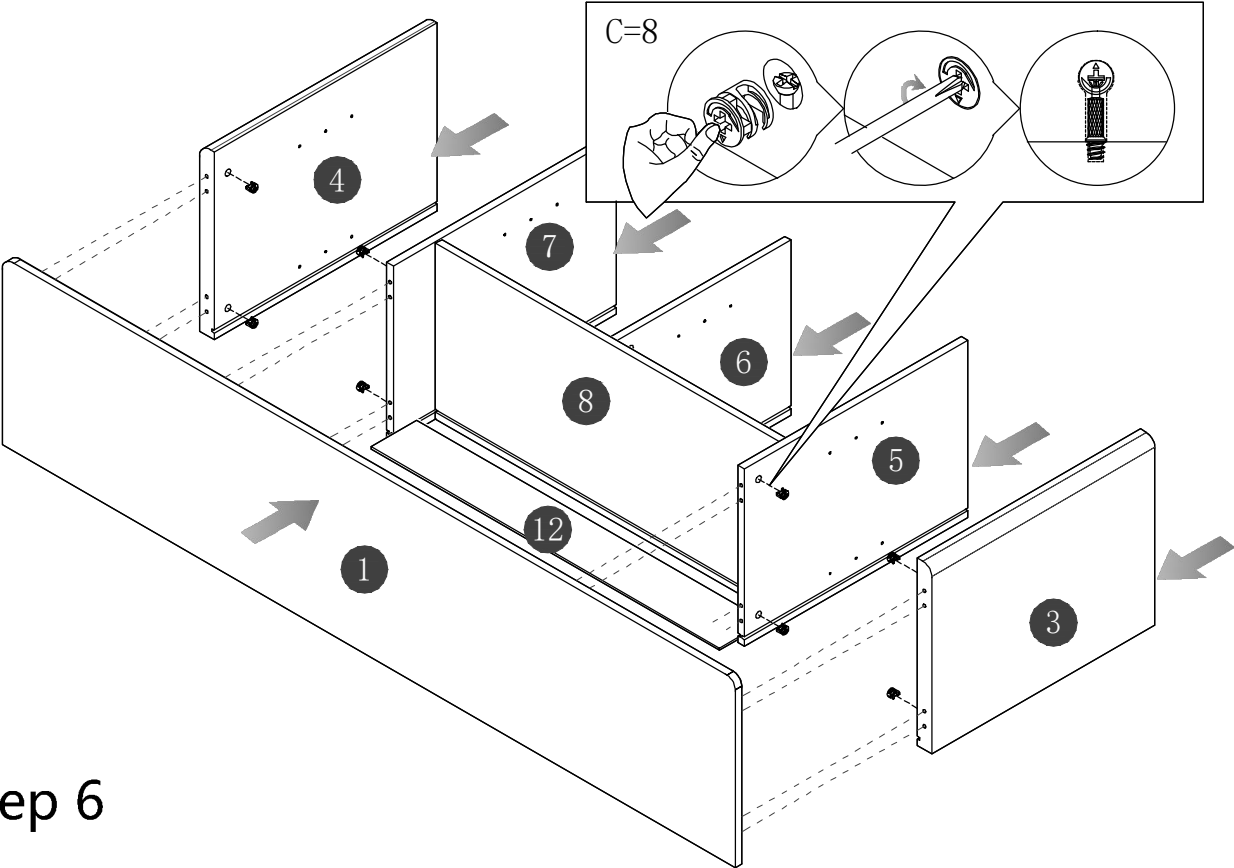
# Step 4

---

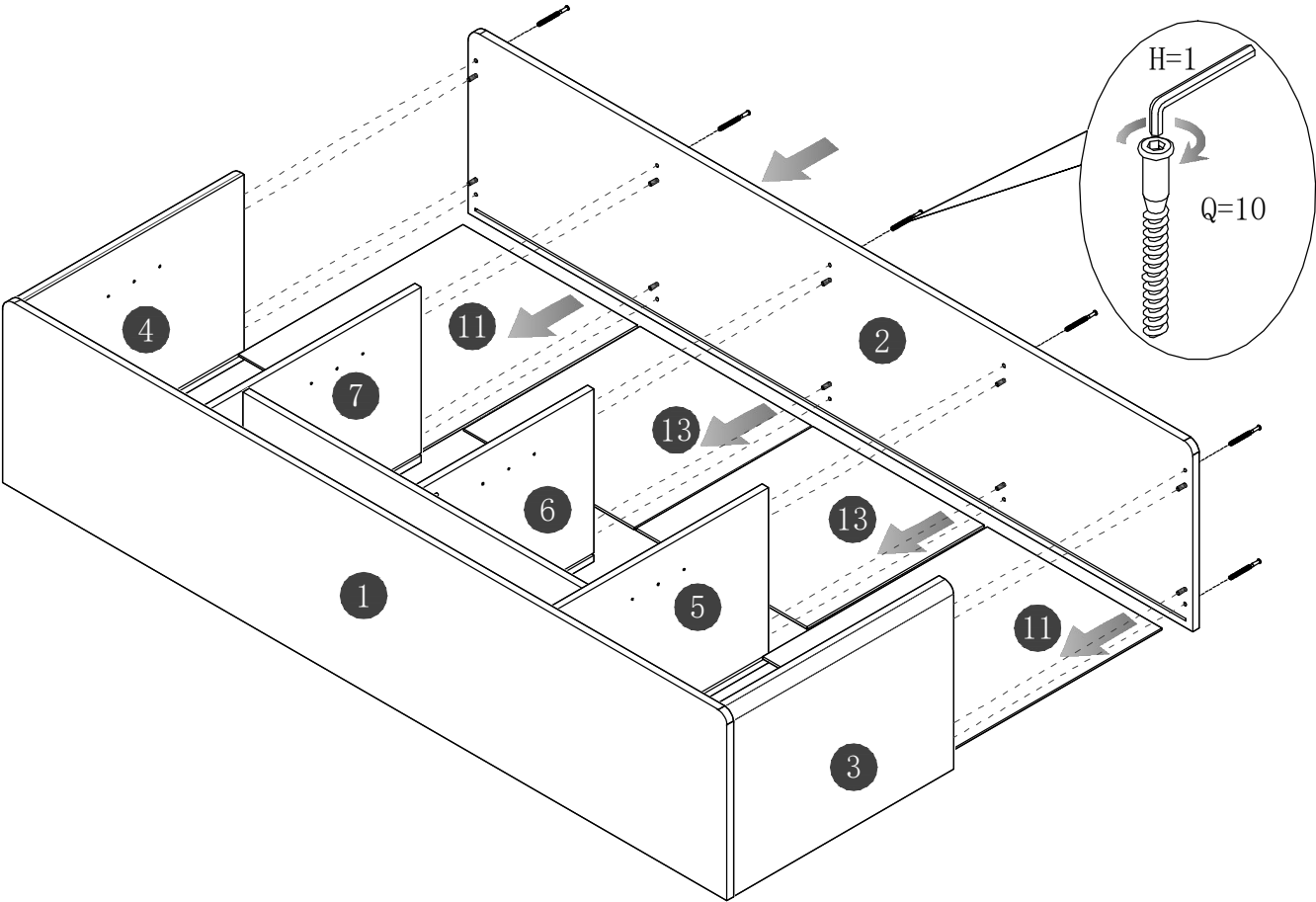




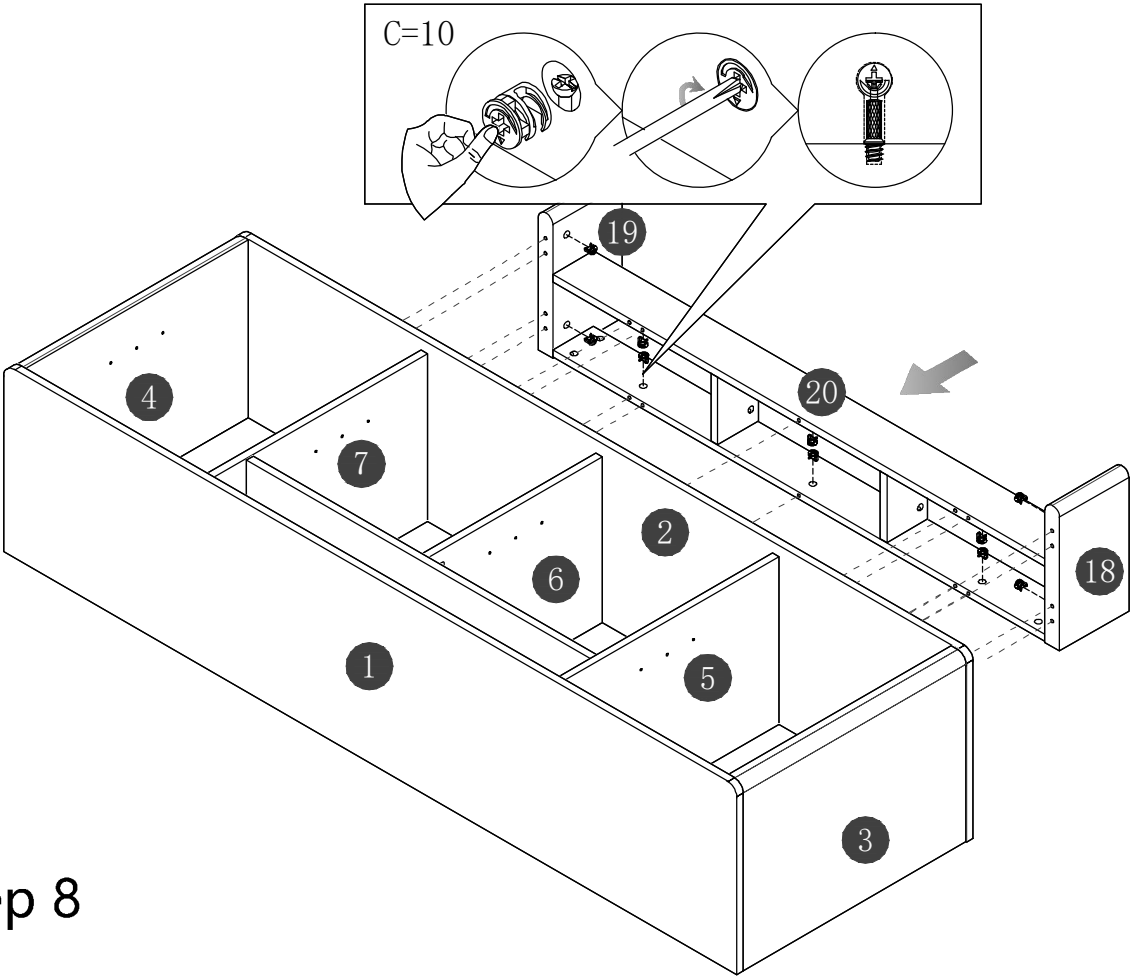
# Step 5



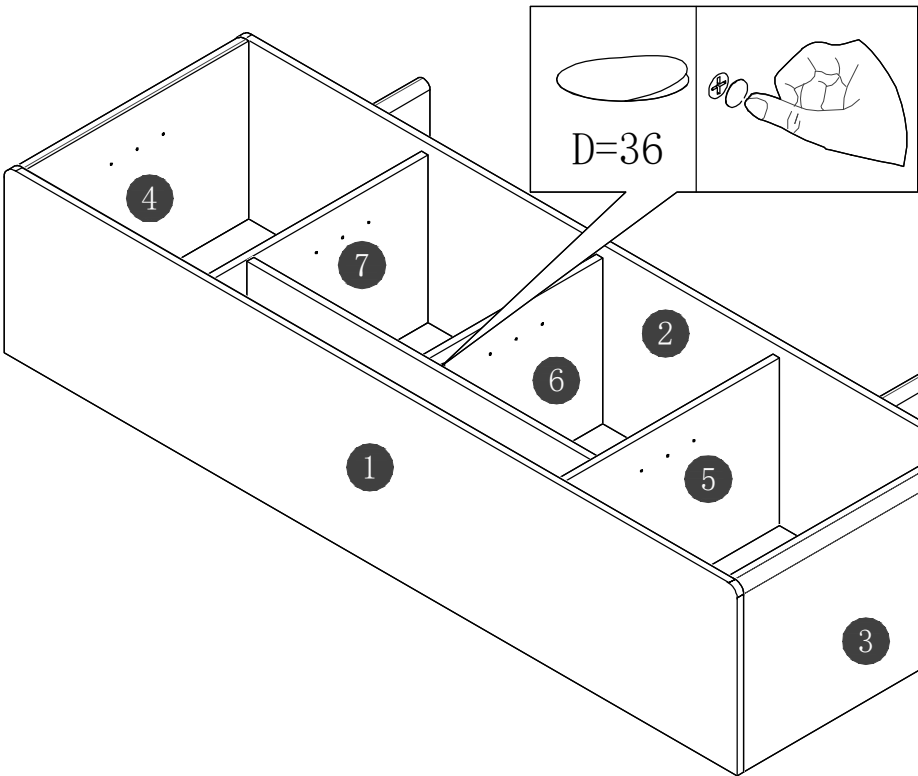
# Step 6



# Step 7

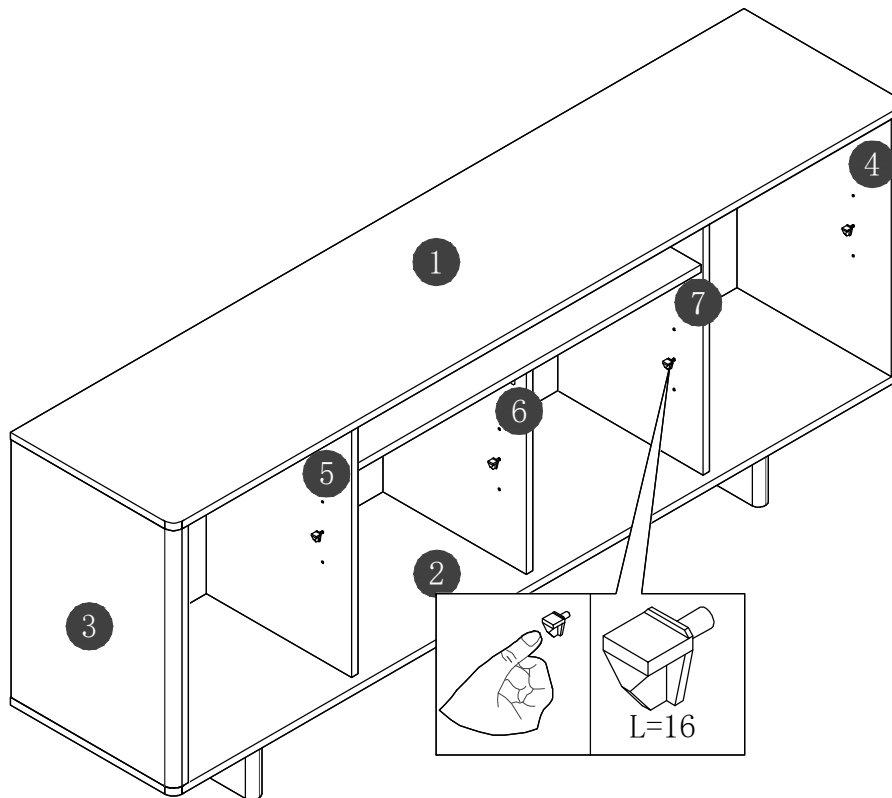


# Step 8



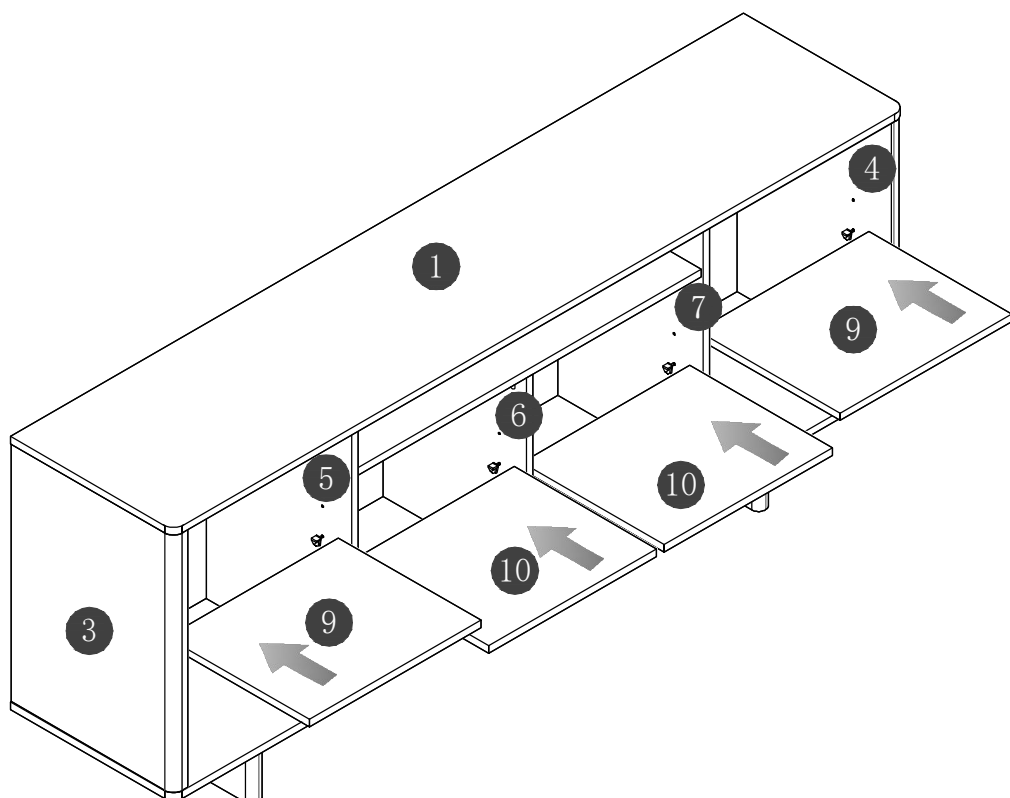
## Step 9

---

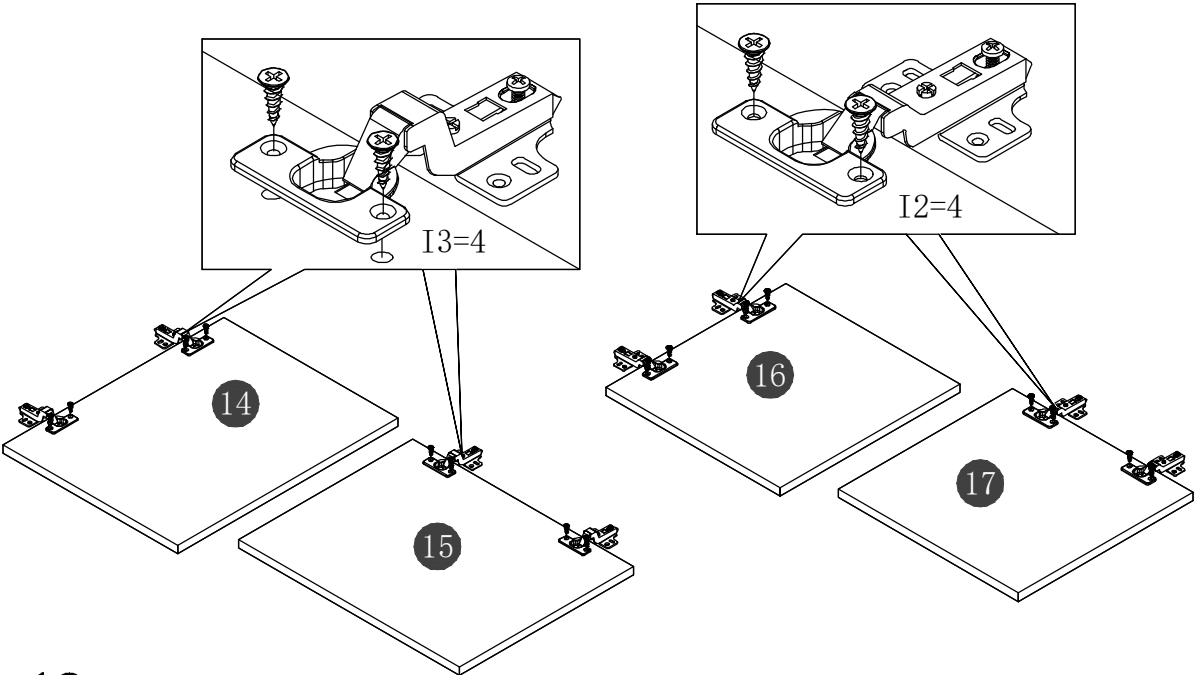


## Step 10

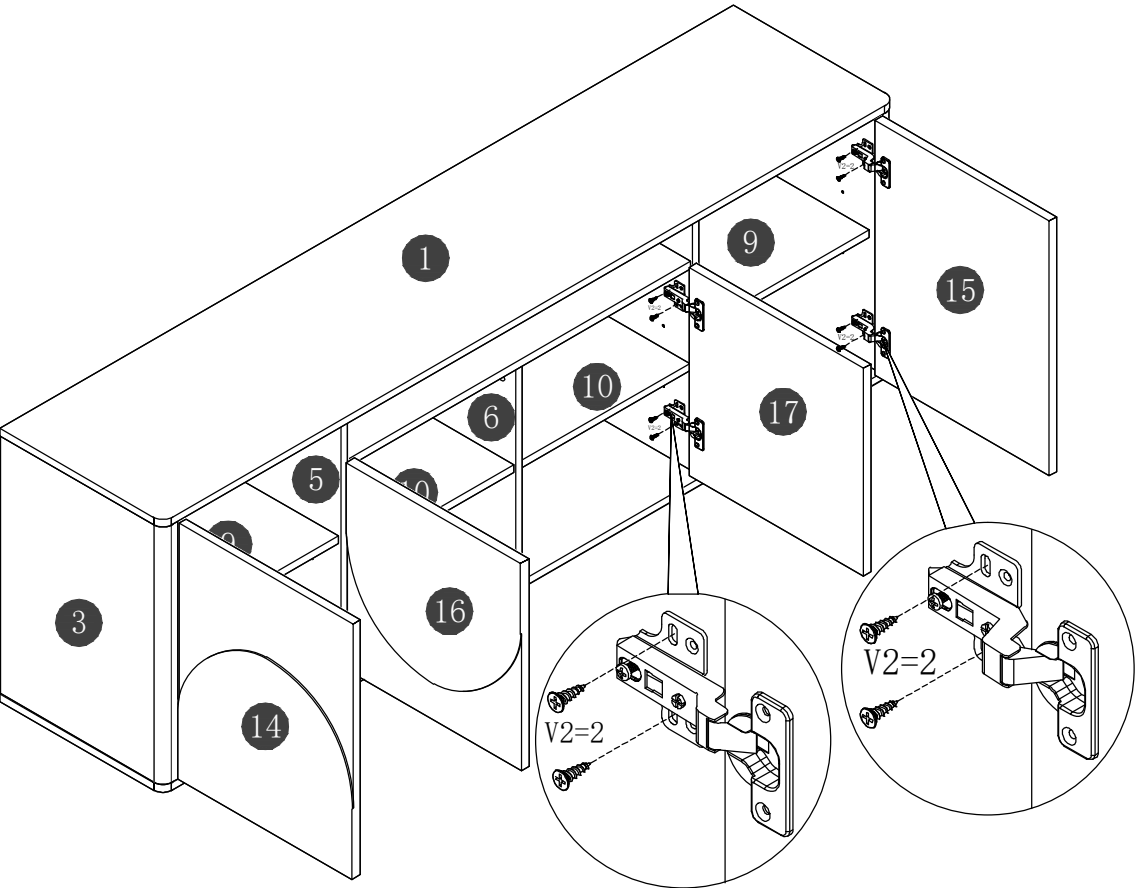
---



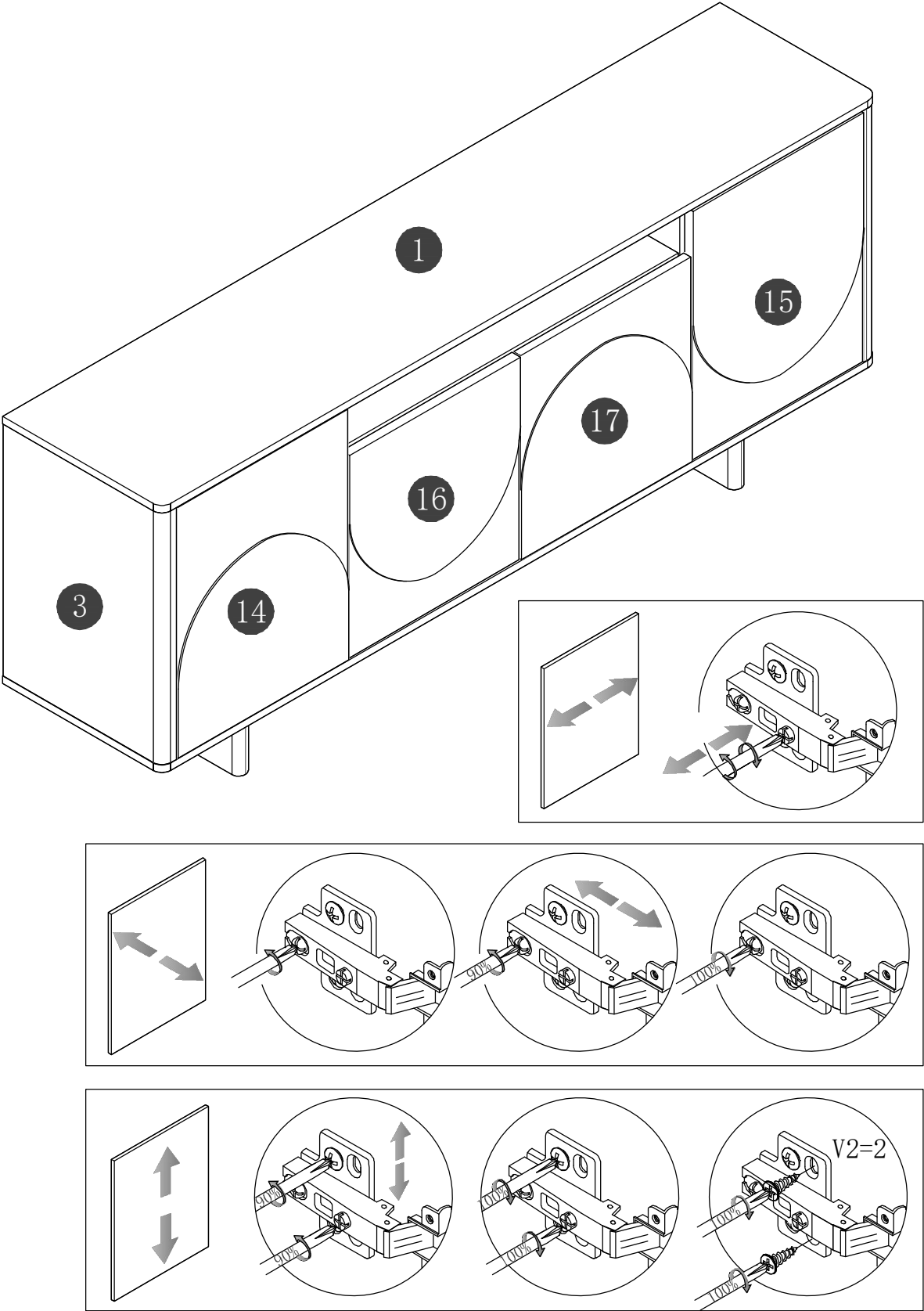
# Step 11



# Step 12

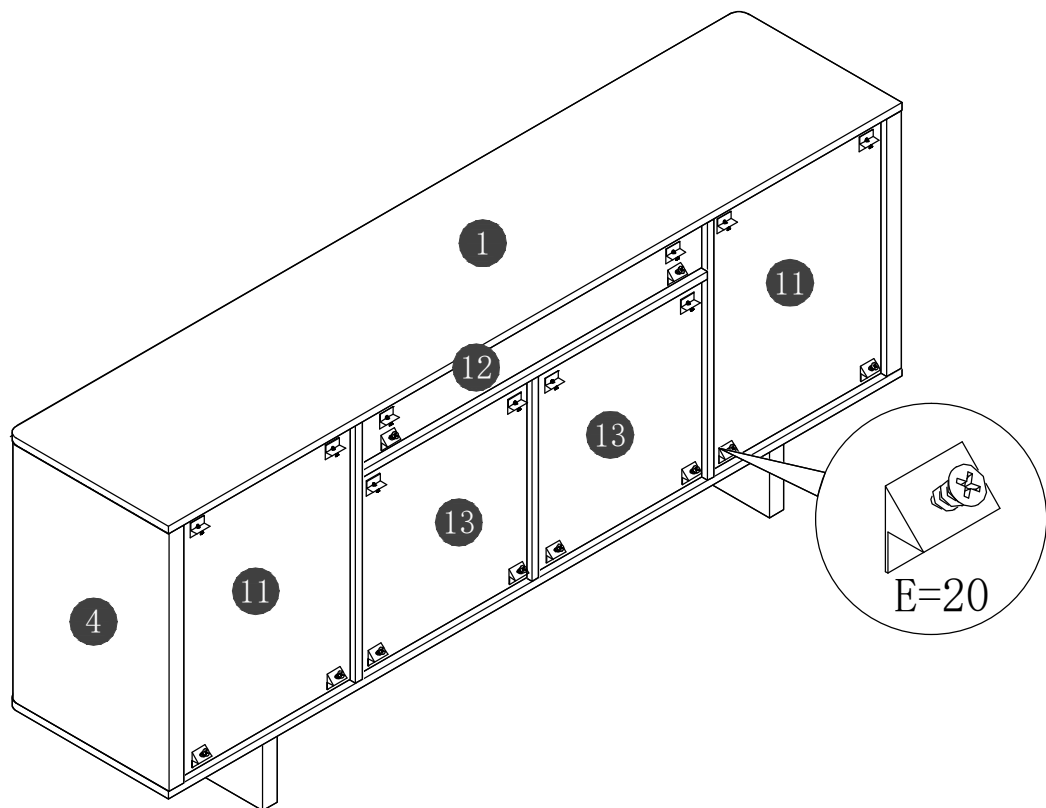


# Step 13



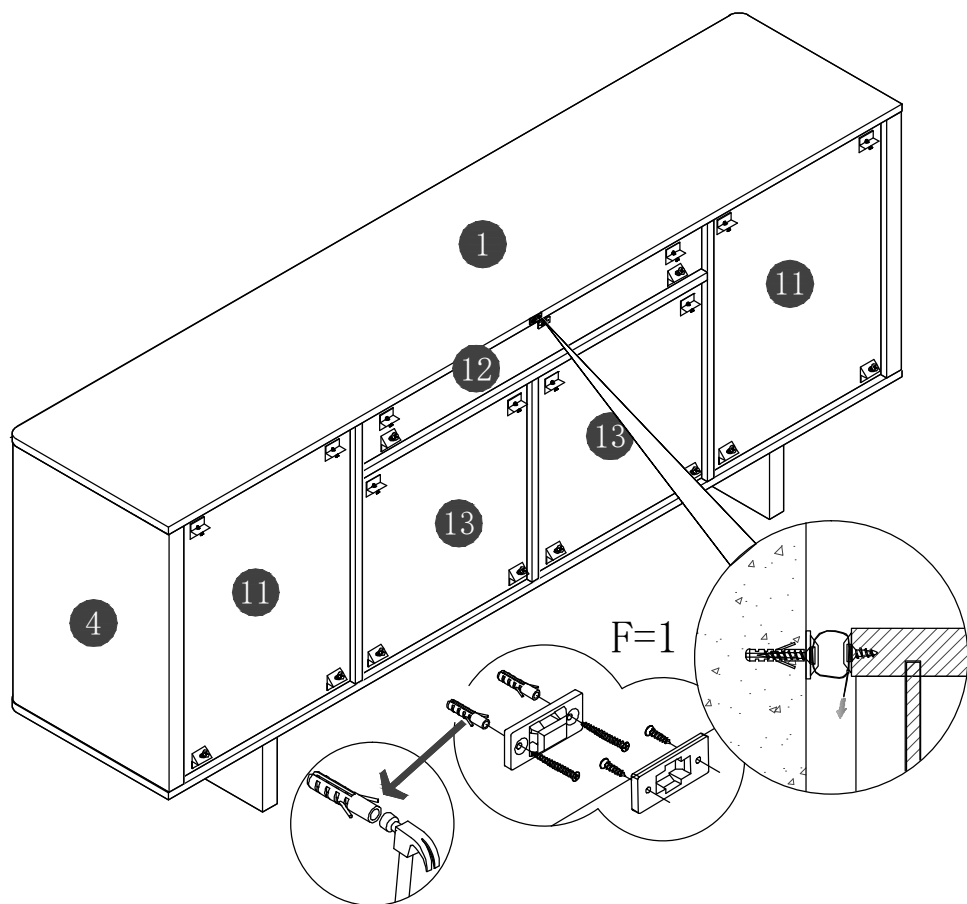
# Step 14

---



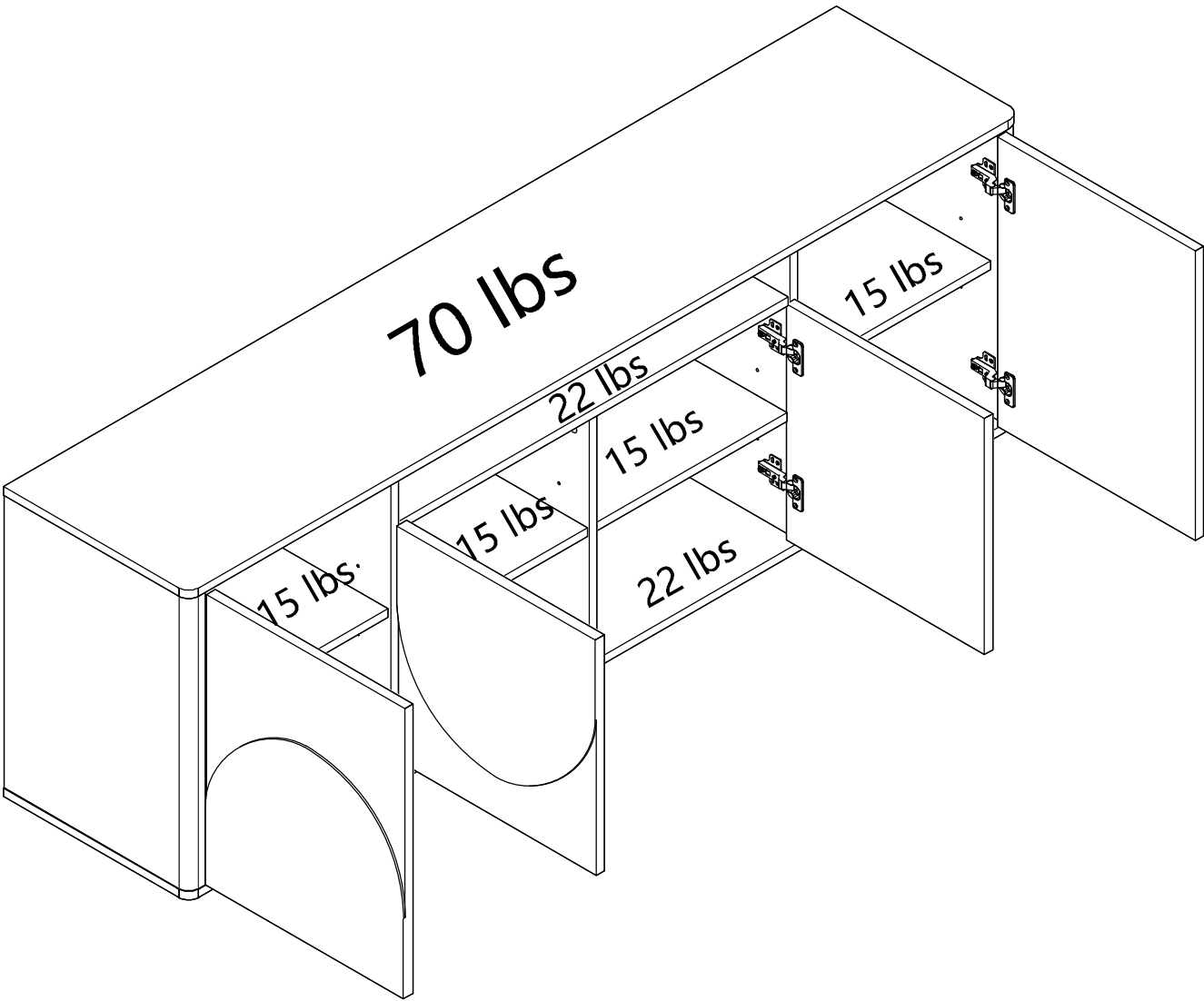
# Step 15

---



# Step 16

---





---

## WARRANTY POLICY

All Manhattan Comfort furniture products are warranted, to the original purchaser at the time of purchase and for a period of 30 days thereafter.

Our warranty is limited to new products purchased in factory sealed cartons. This warranty is valid in the United States of America and Canada.

In order to provide you with timely assistance, please thoroughly inspect your furniture for missing or defective parts immediately after opening the carton.

Manhattan Comfort offers a 30-day parts replacement warranty on all items.

Our furniture products are not intended for outdoor use.

### THE WARRANTY DOES NOT COVER:

- Defects/damages by improper assembly or disassembly.
- Defects/damages caused by inappropriate use of the furniture.



319 Ridge Rd. Dayton, NJ 08810

908-888-0818