

## MAGNOLIA 54" SINGLE SINK BASE CABINET

# ARIEL

### BASE CABINET DIMENSIONS

54" W x 21.5" D x 34.5" H



### FEATURES

- Solid wood frame & plywood panels
- Dovetail drawers and joints
- Soft closing doors & drawers

### HARDWARE FINISHES\*



Brushed Nickel



Satin Brass



Matte Black



Polished Chrome

\*Hardware comes preinstalled with the illustrated option.  
Other finishes are available on our online store if you prefer a different one.

### AVAILABLE COLORS



White

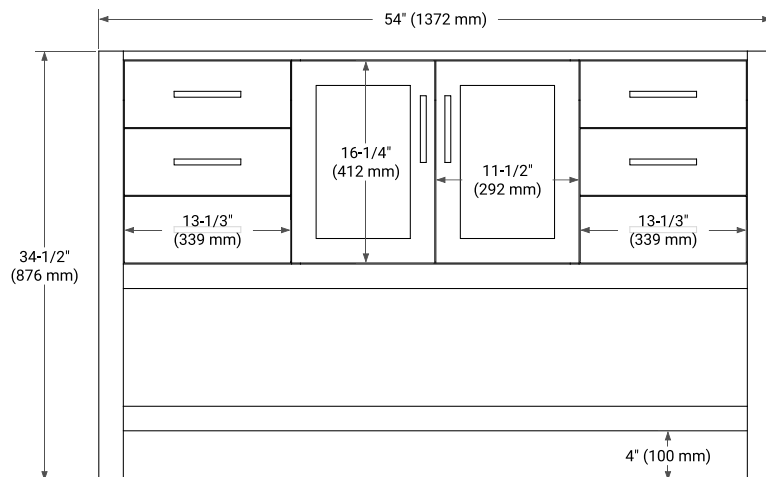


Grey

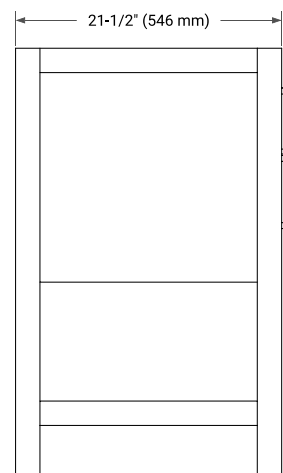


Midnight Blue

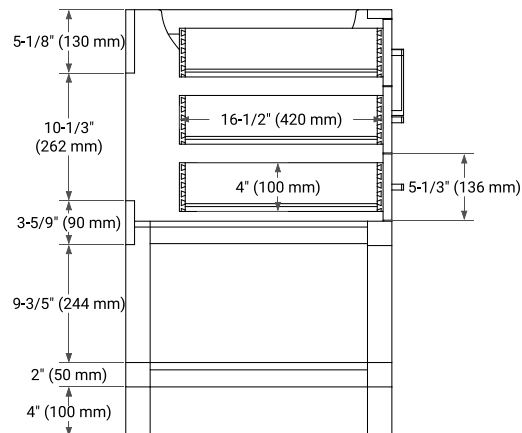
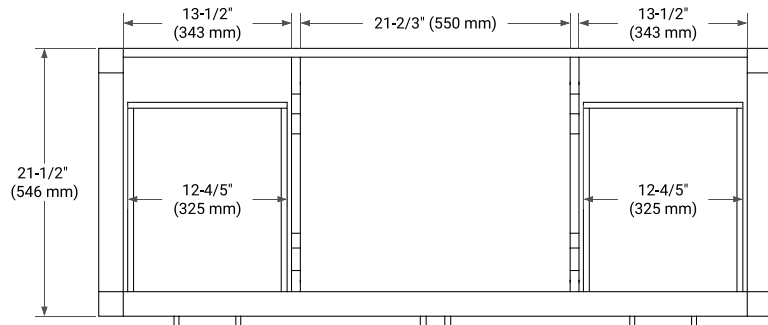
### FRONT VIEW



### SIDE VIEW



### PLAN VIEW



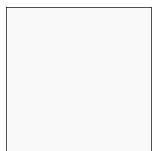
## OVERALL DIMENSIONS

55" W x 22" D x 1.5" H

## COUNTERTOP OPTIONS



Carrara Marble



White Quartz

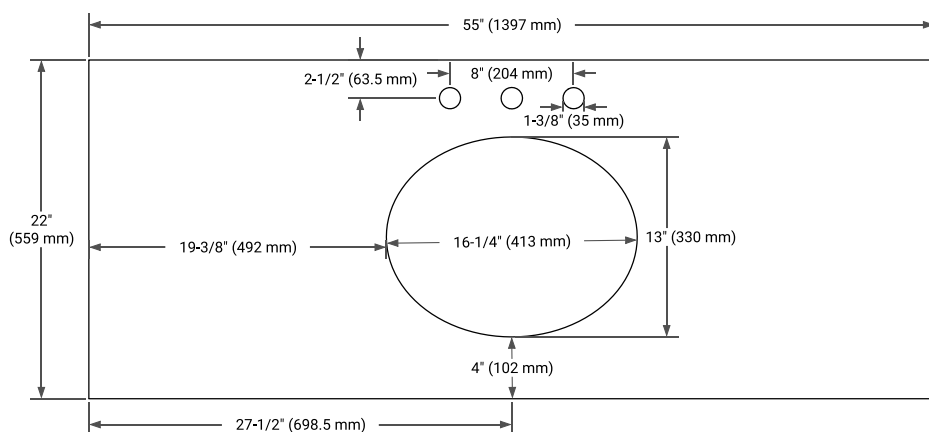
## FEATURES

- Solid countertop with mitered edges & seams
- Undermount white oval sink
- Pre-drilled for 8" widespread faucet

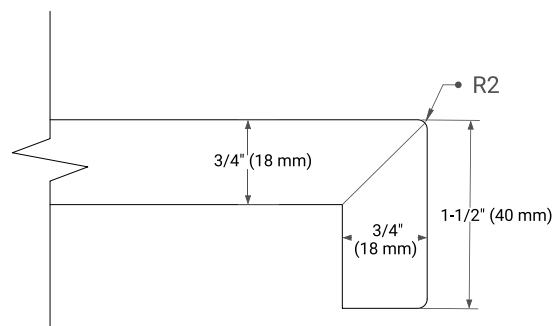
## INCLUDED

- Countertop
- Matching Backsplash
- Oval Sink

## COUNTERTOP PLAN VIEW



## EDGE SIDE VIEW



## THREE DIMENSIONAL COUNTERTOP VIEW

