



LIMITED LIFETIME WARRANTY

Compass Manufacturing International warrants to the original consumer purchaser that the faucet be free from defects in material and workmanship for as long as the original consumer purchaser owns the home in which the faucet was first installed.

In the event that Freendo faucets are used in a Commercial Application, this warranty is limited for a period of 5 years, unless otherwise specifically stated in the catalog and/or price book.

Compass Manufacturing International will replace, free of charge, during the applicable warranty period, any part or finish that proves defective in material and/or workmanship under normal installation, use and service. This warranty shall not apply to goods which have been subject to accidents, negligence or improper installation. Compass Manufacturing International will not be liable for other damages or losses, including, but not limited to: labor charges and/or damages incurred in installation, repair or replacement as well as any other kind of loss or damage. Proof of purchase from the original consumer purchaser must be made available for all warranty claims.

Compass Manufacturing International recommends using a professional plumber for all installation and repair. Compass Manufacturing International will, at its discretion, provide replacement parts for installation by consumer for any parts that prove defective under normal usage and service with new or equivalent parts. Replacement parts may be obtained by emailing the address below, calling the number below or by writing to:

Compass Manufacturing International

Freendo Product Service

6702 Enterprise Drive

Louisville, KY 40214

800.626.3525

warranty@cmiproduct.com

Revised 4/28/16

warranty@cmiproduct.com

© Compass Manufacturing International

800.626.3525



Model No. : 191-7719 Polished Chrome
191-7720 Brushed Nickel *Spotless PVD*
191-7721 Oil-Rubbed Bronze



Single Handle Pull-Out Kitchen Faucet

3 Hole or Single Hole Installation



Helpful Information

Helpful Tools

Tools:

Gather the necessary tools as shown below to complete the installation of this faucet. Some may not be needed depending on the model of faucet you are installing. Check with your local hardware store on the requirements of your installation situation.



Plumber's Putty



Flashlight



Basin Wrench



Safety Glasses



Screwdriver



Pliers



Channel Locks



Adjustable Wrench

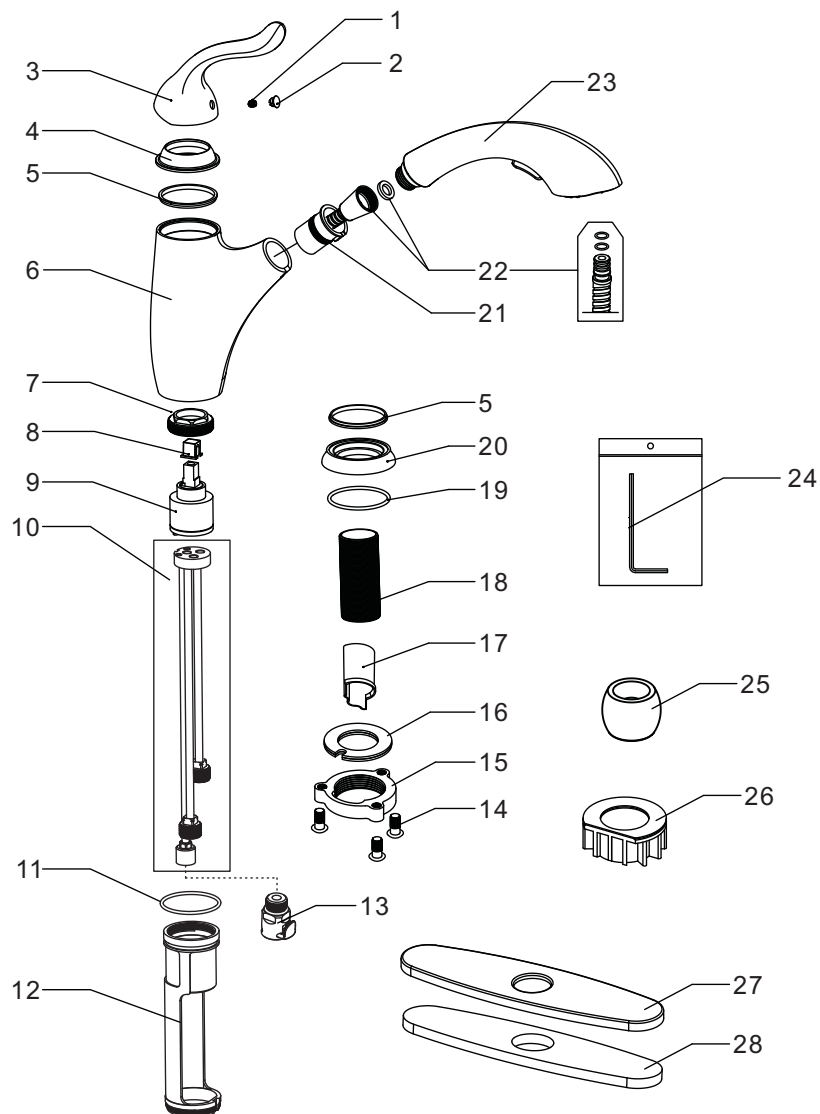
5

Parts List

28	Putty Plate
27	Deck Plate
26	Plastic Base
25	Weight
24	Allen Key
23	Spray
22	Pull-out Hose
21	Spout Hub Bushing
20	Hub Base
19	O-ring
18	Shank
17	Protective Sleeve
16	Clamp
15	Locknut
14	Screw
13	Quick Connect Assembly
12	Waterway Sleeve
11	O-ring
10	Waterway
9	Cartridge
8	Cartridge Adapter
7	Cartridge Locknut
6	Body
5	Washer
4	Trim Cap
3	Handle
2	Index
1	Set Screw
No.	Part Name

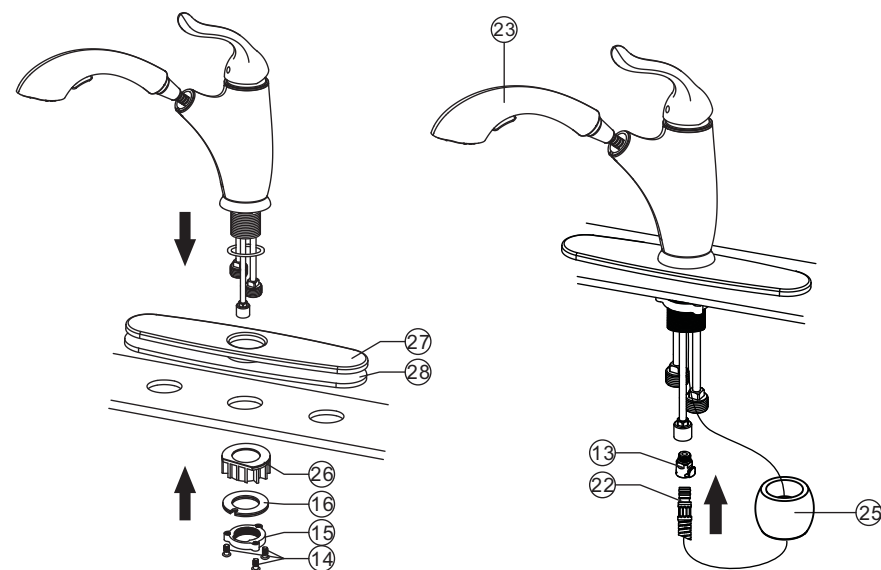
4

Parts Diagram



1

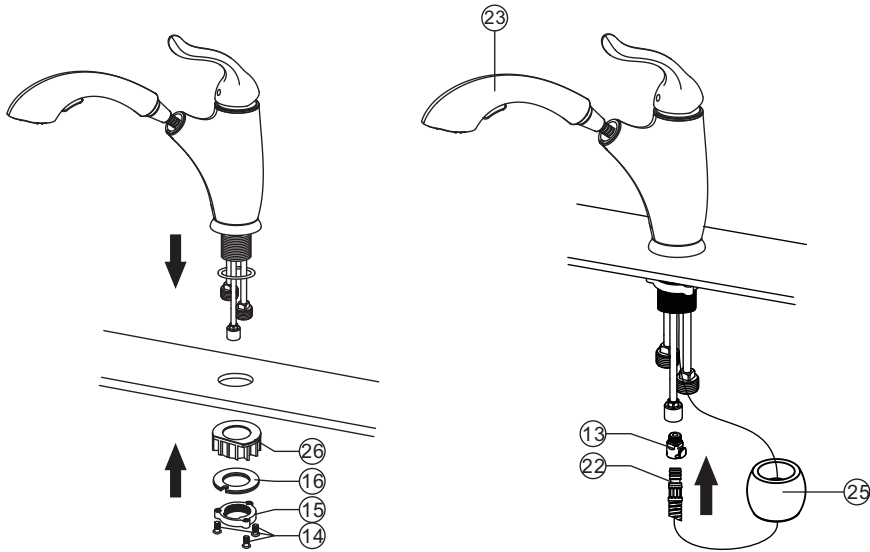
Install With Deck Plate



1. Assemble deck plate ②⑦ and putty plate ②⑧ to faucet.
2. Position faucet on countertop.
3. From underneath of the countertop, assemble plastic base ②⑥ (NOTE: applicable when the faucet is installed in sink), clamp ①⑥ and locknut ①⑤ and screw ①④. Tighten the locknut by hand and secure the screws with screwdriver.
4. Fix the weight ②⑤ to the pull-out hose ②②.
5. Connect pull-out hose ②② to quick connect assembly ①③.
CAUTION: Make sure hose is properly engaged and secure in quick connect assembly.
6. Connect supply lines to water supply valve. (supply valves and supply lines are not included, please purchase them in local plumbing shops).
CAUTION: DON'T OVER TIGHTEN THE SUPPLY LINES. OTHERWISE IT MIGHT DAMAGE THE WASHERS AND NUTS OF SUPPLY LINES AND CAUSE LEAK.
7. Remove spray ②③ from faucet and flush water through faucet to remove any line trash.
8. Replace spray ②③ and run water through faucet for checking leaks at all connections.

2

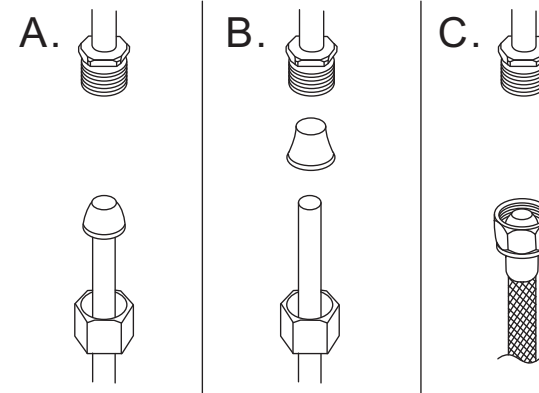
Install Without Deck Plate



1. Position faucet on countertop.
2. From underneath of the countertop, assemble plastic base 26 (NOTE: applicable when the faucet is installed in sink), clamp 16 and locknut 15 and screw 14. Tighten the locknut by hand and secure the screws with screwdriver.
3. Fix the weight 25 to the pull-out hose 22.
4. Connect pull-out hose 22 to quick connect assembly 13.
CAUTION: Make sure hose is properly engaged and secure in quick connect assembly.
5. Connect supply lines to water supply valve. (supply valves and supply lines are not included, please purchase them in local plumbing shops).
CAUTION: DON'T OVER TIGHTEN THE SUPPLY LINES. OTHERWISE IT MIGHT DAMAGE THE WASHERS AND NUTS OF SUPPLY LINES AND CAUSE LEAK.
6. Remove spray 23 from faucet and flush water through faucet to remove any line trash.
7. Replace spray 23 and run water through faucet for checking leaks at all connections.

3

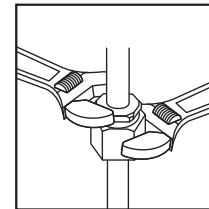
Hose Installation



Warning:
The supply valves and supply lines are not included.

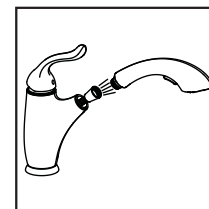
Connect to water supply lines with either:

- (A) 3/8 " O.D. Copper tubing (ball nose risers with the coupling nuts or;
(B) 3/8 " Copper tubing (no ball) with supplied tube head interior connector or;
(C) IPS faucet connectors (1/2 ")



Important:

Tighten connection with two wrench to prevent damage to tube body. Be careful not to bend the stem as this will void the product warranty.



Important:

Remove the spray head and let both hot and cold water run for one minute. To clear any line trash. This will help clean any debris that might clog the system. Re-assemble spray head.

Test system for leaks .