



Style Selections® is a registered trademark of LF, LLC. All Rights Reserved.

ITEM #1210978

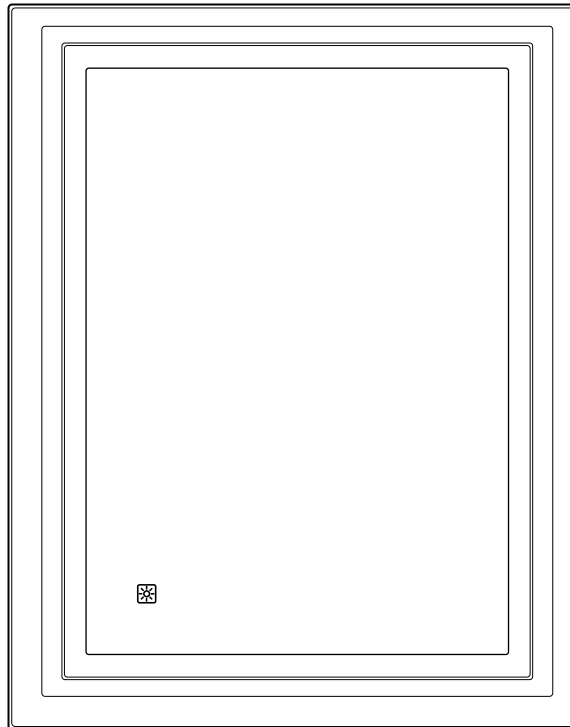
LIGHTED MIRROR

MODEL #MIR7191

Français p. 12

Español p. 23

ATTACH YOUR RECEIPT HERE



800413

**For
Damp Location**

Purchase Date _____

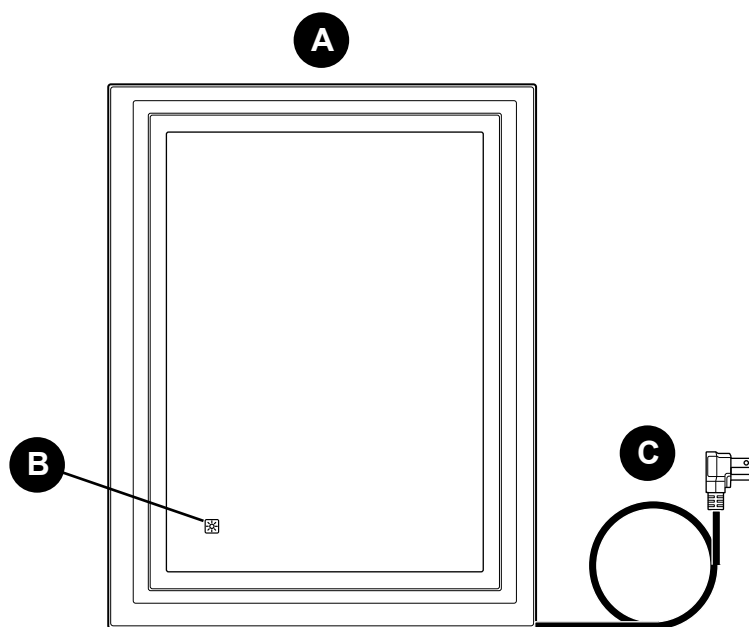


Questions, problems, missing parts? Before returning to your retailer, call our customer service department at **1-877-888-8225**, 8 a.m. - 6 p.m., EST, Monday - Thursday, 8 a.m. - 5 p.m., EST, Friday.

TABLE OF CONTENTS

Package Contents	2
Hardware Contents	3
Safety Information	3
Preparation	5
Initial Installation	5
Plug-In Installation	6
Hardwire Installation	7
Operating Instructions	11
Care and Maintenance	11
Troubleshooting.....	11
Warranty	11

PACKAGE CONTENTS



PART	DESCRIPTION	QUANTITY
A	Fixture	1
B	Touch Sensor (Preassembled to Fixture (A))	1
C	Power Cord (Preassembled to Fixture (A))	1

HARDWARE CONTENTS (shown actual size)

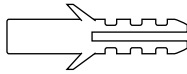
AA



Fixture
Screw

Qty. 4

BB



Plastic
Anchor

Qty. 4

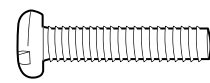
CC



Wire
Connector

Qty. 3

DD



Machine
Screw

Qty. 2



SAFETY INFORMATION

READ AND SAVE THESE INSTRUCTIONS.

For installation options not covered in this manual, consult a qualified electrician.



DANGER

- For your protection and safety, carefully read and understand the information provided in this manual completely before attempting to assemble, install or operate this product. Failure to do so could lead to fire, electrical shock or other injuries that could be hazardous or even fatal.
- DO NOT connect this fixture to an electrical system that does not provide a means for equipment grounding. Never use a fixture in a two-wire system that is not grounded. Installing a fixture into an electrical system not having a proper grounding means could cause metal parts of the fixture to carry electrical currents if any of the fixture wires, wire connections or splices were to become broken, cut or loose during the mounting or normal operation of the fixture. Under this condition, anyone coming in contact with the fixture would be subject to electrical shock, which could cause serious injury or death.
- DO NOT connect the bare or green insulation fixture ground wire to the black (HOT) current-carrying wire or the white (NEUTRAL) house wire. Connection of the bare or green fixture ground wire to the black or white house wires may cause metal parts of the fixture to carry electrical currents. Under this condition anyone coming in contact with the fixture will receive electrical shock, which could cause serious injury or death.
- DO NOT damage or cut the wire insulation (covering) during installation of fixture. DO NOT permit wires to contact any surface having a sharp edge. To do so may damage or cut the wire insulation, which could cause serious injury or death from electrical shock.



WARNING

- All electrical connections must be in agreement with local codes and ordinances, the National Electric Code (NEC) and ANSI/NFPA 70-1999. Contact your municipal building department to learn about your local codes, permits and/or inspections. Risk of fire - most dwellings built before 1985 have supply wire rated for 140°F. Consult a qualified electrician before installation.
- DO NOT suspend any fixture by the house wires. A fixture must always be mounted directly to an outlet box or to a mounting plate which is first attached to the outlet box. Wire connectors will not support the weight of a fixture. Suspending a fixture by the house wires and wire connectors will result in the fixture falling, with the possibility of personal injury and the danger of electrical shock or fire.



SAFETY INFORMATION

- To reduce the risk of fire, electrical shock or personal injury, wire connectors provided with this light fixture are designed to accept only one 12-gauge house wire and two lead wires from the light fixture. If your house wire is larger than 12-gauge or there is more than one house wire to connect to the corresponding fixture lead wires, consult an electrician for the proper size wire connectors to use.
- To reduce the risk of burns, fire, electric shock or injury to persons, DO NOT use the fixture if power supply cord is frayed or broken or plug is damaged, if the fixture is not working properly, if it has been dropped or damaged, or it has been submerged in water.
- To reduce the risk of electric shock, always unplug this fixture from the electrical outlet before cleaning.
- To reduce the risk of burns, fire, electric shock or injury to persons, unplug from outlet before attaching or removing parts.
- To reduce the risk of burns, fire, electric shock or injury to persons, use this fixture ONLY for its intended use as described in these instructions. DO NOT use attachments not recommended by the manufacturer.
- To reduce the risk of burns, fire, electric shock or injury to persons, DO NOT mount or place near gas or electric heaters, fireplaces, candles or other similar sources of heat.
- DO NOT use staples or nails to secure fixture; DO NOT place power cord on sharp hooks or nails.
- DO NOT plug in or operate the fixture when it is tightly coiled.
- DO NOT route the power cord through walls, doors, windows, or any similar part of the building structure.
- DO NOT close doors and/or windows on the fixture or power cord as doing so may damage the insulation wire(s).
- The installation of this fixture may not be suitable for all locations.
- **NOTE:** This equipment has been tested and found to comply with the limits for a Class B digital device, pursuant to Part 15 of the FCC Rules. These limits are designed to provide reasonable protection against harmful interference in a residential installation. This equipment generates, uses and can radiate radio frequency energy and, if not installed and used in accordance with the instructions, may cause harmful interference to radio communications. However, there is no guarantee that interference will not occur in a particular installation. If this equipment does cause harmful interference to radio or television reception, which can be determined by turning the equipment off and on, the user is encouraged to try to correct the interference by one or more of the following measures:
 - * Reorient or relocate the receiving antenna.
 - * Increase the separation between the equipment and receiver.
 - * Connect the equipment into an outlet on a circuit different from that to which the receiver is connected.
 - * Consult the dealer or an experienced radio/TV technician for help.

SAFETY INFORMATION

CAUTION

- TURN OFF ELECTRICITY at main fuse box (or circuit breaker box) before beginning installation by removing the fuse (or switching the circuit breaker off).
- If you are not sure the lighting system has a grounding means, DO NOT attempt to install this fixture. Contact a qualified, licensed electrician for information regarding the proper grounding methods as required by the local electrical code in your area.
- All fixtures must be mounted to an outlet box that is supported by the building structure.
- Do NOT tamper with or attempt to repair LED component of fixture. The light source is designed for this specific application and should not be serviced by untrained personnel. If any servicing is required, call our customer service department.
- Total wattage for this fixture is 23.3 watts; do not attempt to replace the LEDs.
- Due to the weight of this fixture, it is advisable to seek the help of another person.

PREPARATION

Before beginning assembly of product, make sure all parts are present. Compare parts with package contents list and hardware contents list. If any part is missing or damaged, do not attempt to assemble the product.


Estimated Assembly Time: 30 minutes

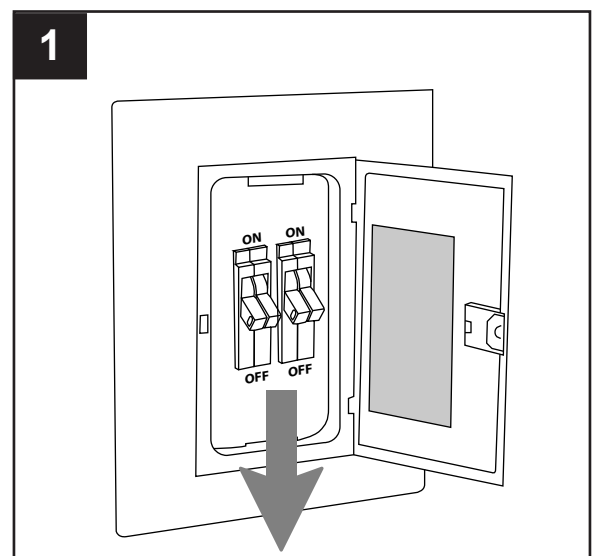
Tools Required for Assembly (not included): Flathead Screwdriver, Phillips Screwdriver, Wire Strippers, Drill, 5/64 in. or 5/16 in. Drill Bit (wood or drywall), Hammer, Pencil, Pliers, Wire Cutters, Safety Glasses, Stepladder, Electrical Tape, Template

Helpful Tools (not included): Soft Cloth, Level

INITIAL INSTALLATION

1. Turn off circuit breakers and wall switch to the fixture supply line leads.

 **DANGER:** Failure to disconnect power supply prior to installation may result in serious injury or death.



INITIAL INSTALLATION

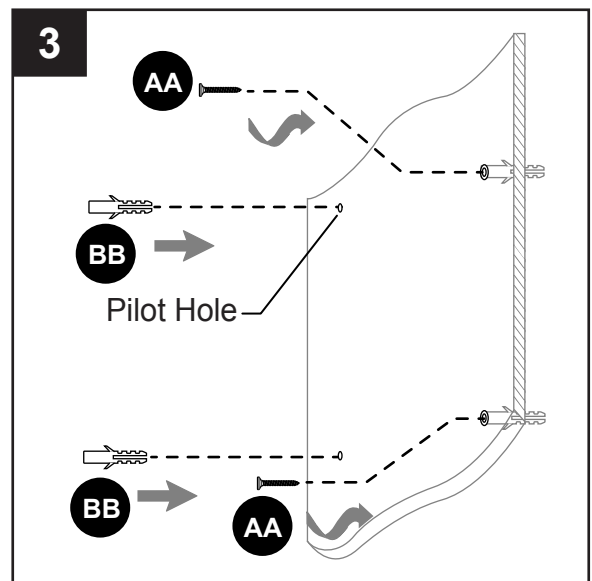
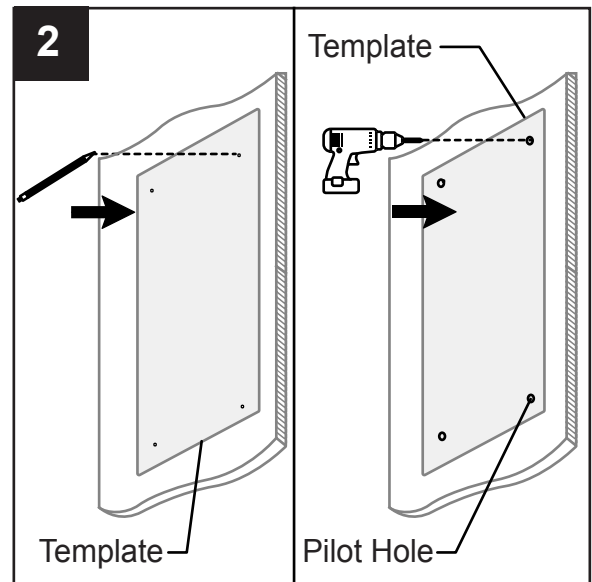
- Determine the approximate location for the fixture (A). Place a template (not included) against the wall, and mark the location of the holes using a pencil or a marker (not included).

If mounting surface is wood, use a 5/64 in. drill bit (not included) to drill the fixture screws (AA) in wood at marked locations. Proceed to one of the two installation options (Plug-In or Hardwire).



If mounting surface is drywall, use a 5/16 in. drill bit (not included) to drill four pilot holes in drywall at marked locations. Continue to Step 3.

NOTE: The fixture (A) can be hung vertically, or horizontally.

- Position plastic anchor (BB) in each pilot hole. Gently tap plastic anchors (BB) with a hammer (not included) until flush with wall surface. Screw fixture screw (AA) into plastic anchor (BB) about 1/8 - 5/16 in. of the screw to remain showing.

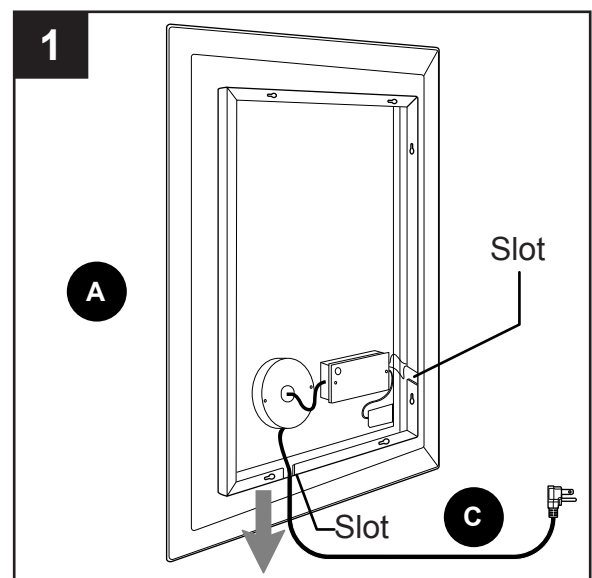


Hardware Used

AA	Fixture Screw		x 4
BB	Plastic Anchor		x 4

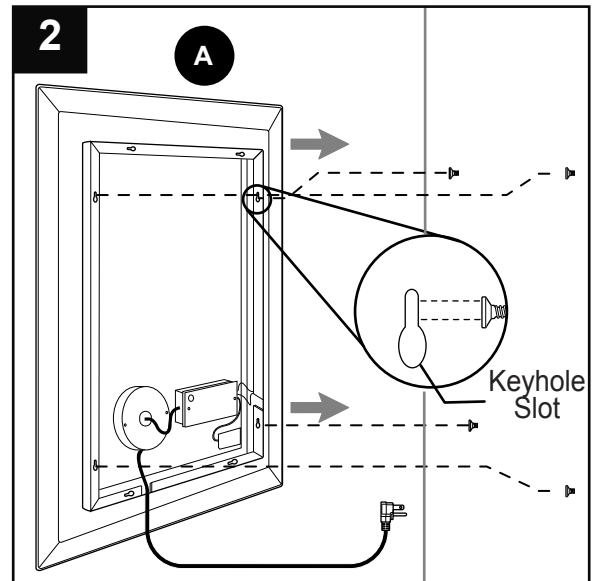
PLUG-IN INSTALLATION

- Before hanging the fixture (A), place power cord (C) through one of the two slots on the back of the fixture (A).



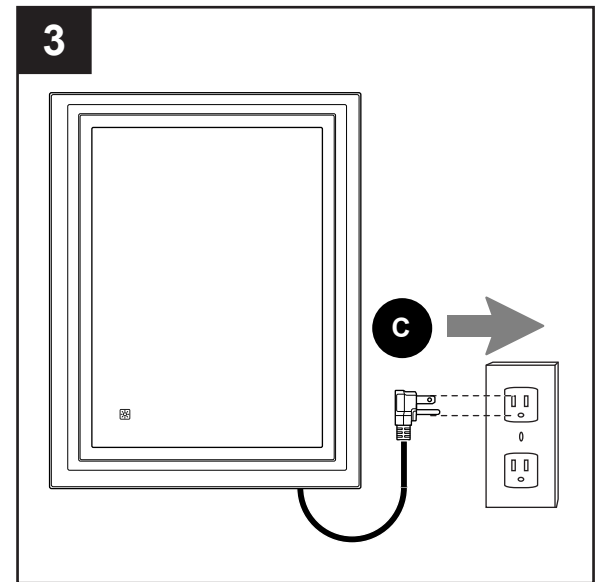
PLUG-IN INSTALLATION

2. Hang fixture (A) using the keyhole slots on the back of fixture (A).



3. Insert the power cord (C) preassembled on fixture (A) into proper wall outlet.

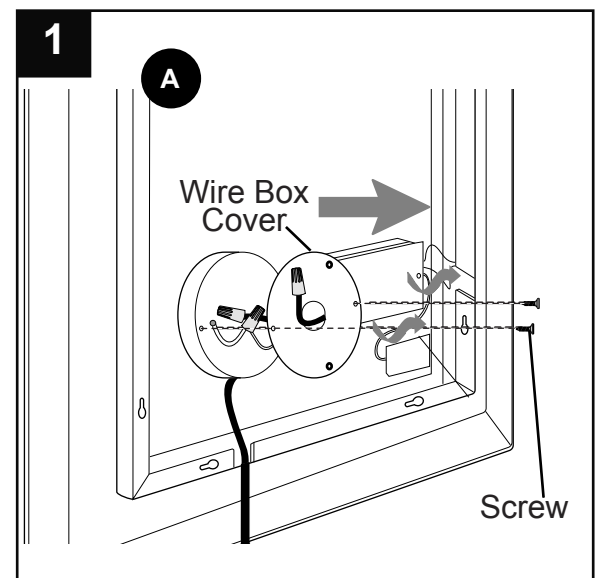
⚠ WARNING: The power cord is equipped with a three-prong grounded plug that must be inserted into a matching receptacle. Under no circumstances must the grounding prong be cut off the plug. Where a two-prong wall receptacle is encountered, it must be replaced with a properly grounded **three-prong** receptacle installed in accordance with the National Electrical Code and all applicable local codes and ordinances. This work must be done only by a qualified electrician, using copper wire only.



HARDWIRE INSTALLATION

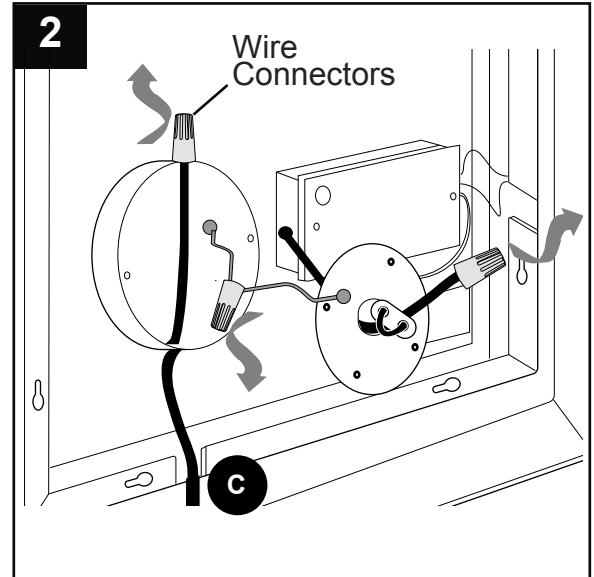
1. Open the round wire box by removing the screws on the wire box cover.

NOTE: Do not remove the round wire box cover.



HARDWIRE INSTALLTION

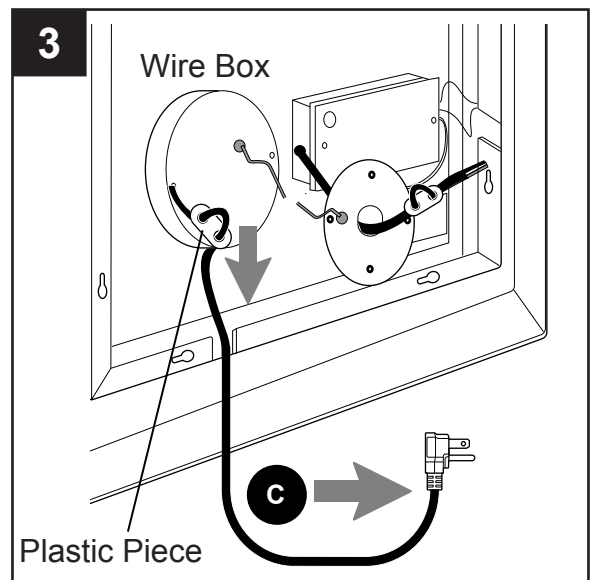
2. Remove the preassembled wire connectors to discharge the power cord (C).



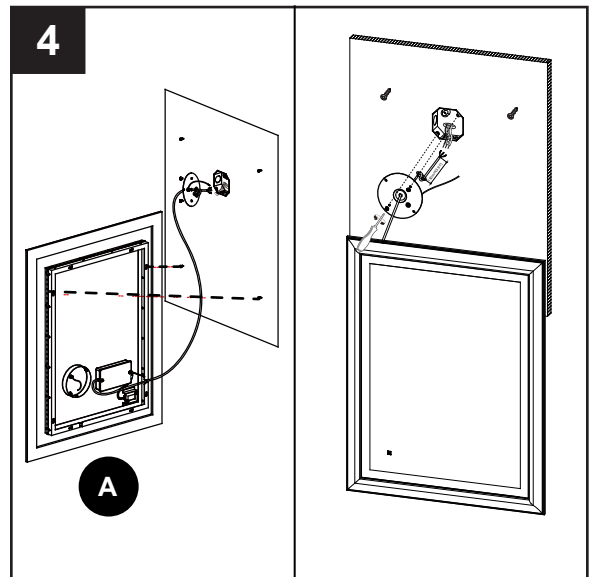
3. Inside the wire box, remove **ONLY** the plastic piece from the power cord (C), so the power cord (C) can be removed from the fixture (A).

Pull power cord (C) from the bottom of the wire box.

NOTE: Do not remove the other plastic piece placed on the main wire insulation.



4. With the help of another person, lift fixture (A) to the desired hanging position (vertical or horizontal).
Hang fixture (A) using the top two keyhole slots on the back of the fixture (A) to expose wiring.
Begin wiring the fixture to the main power supply.



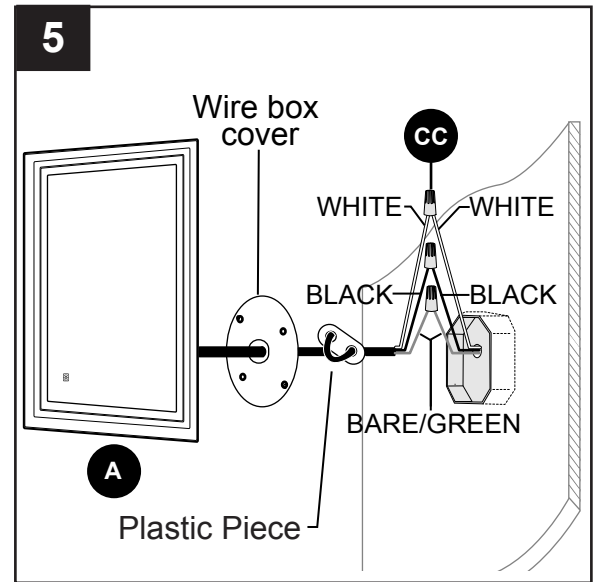
HARDWIRE INSTALLTION

5. Prepare wires by stripping 3/4 in. of insulation from wire ends using wire strippers (not included). Connect WHITE wire from fixture (A) to WHITE wire from outlet box using existing wire connector or wire connector (CC). Connect BLACK wire from fixture (A) to BLACK wire from outlet box using existing wire connector or wire connector (CC). Connect BARE/GREEN ground wire from outlet box to BARE ground wire from fixture (A) with wire connector (CC).

NOTE: Screw wire connectors (CC) on in a clockwise direction.

⚠ WARNING: Never connect ground wire to WHITE or BLACK power supply wires.

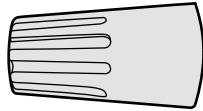
⚠ WARNING: To reduce the risk of fire, electrical shock or personal injury, wire connectors (CC) are designed to accept only one 12-gauge house wire and two lead wires from the light fixture. If your house wire is larger than 12-gauge or there is more than one house wire to connect to the corresponding fixture lead wires, consult an electrician for the proper size wire connectors to use.



Hardware Used

CC

Wire Connector

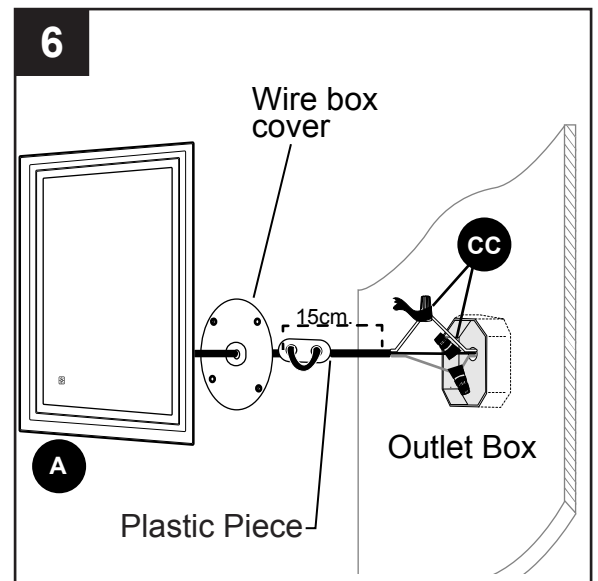


x 3

6. Wrap electrical tape (not included) around each individual wire connector (CC) down to the wire. Push wire connectors (CC) gently back into outlet box. Carefully push excess wiring into outlet box.

⚠ WARNING: Make sure no bare wire or wire strands are visible after making connections.

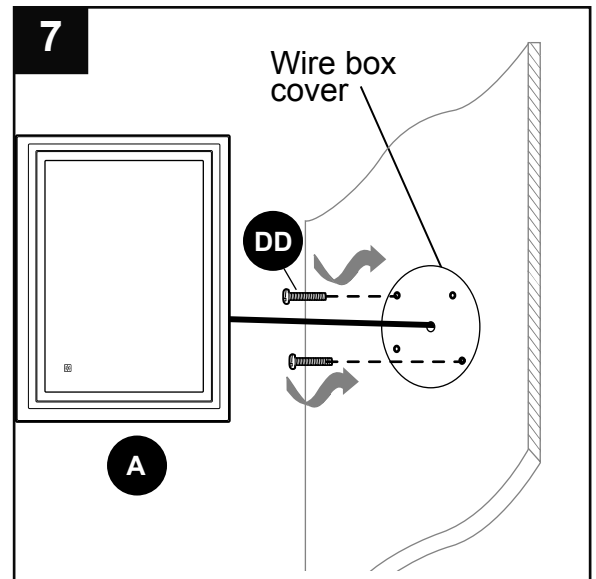
⚠ WARNING: Make sure plastic piece is at least 15cm from the wire ends.




HARDWIRE INSTALLTION

7. Attach the wire box cover to outlet box (not included) using outlet box screws or the machine screws (DD). **NOTE:** If the outlet box screws required for your outlet box are of a different size than the machine screws (DD), consult a licensed electrician before proceeding. Tighten machine screws (DD) to secure wire cover box.

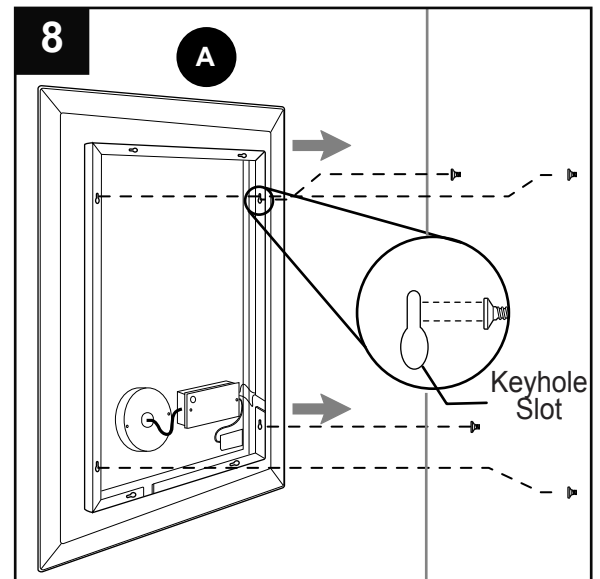
⚠ CAUTION: Make sure the outlet box can support 35 lbs. hanging weight. Use *metal* outlet box; plastic outlet boxes are not recommended.



Hardware Used

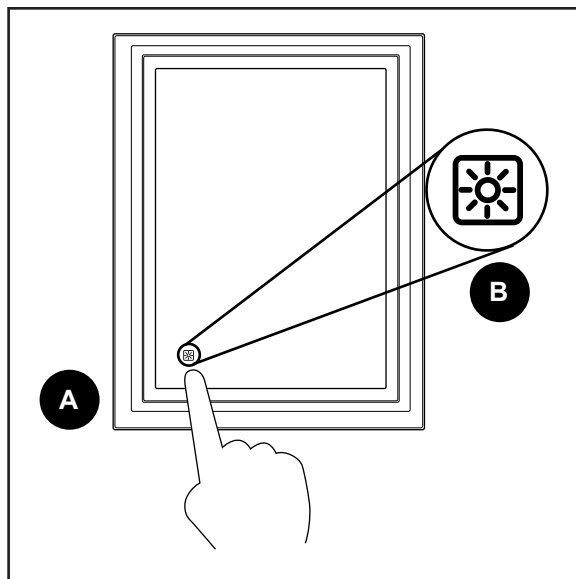
DD Machine Screw  x 2

8. Hang fixture (A) using the keyhole slots on the back of fixture (A).



OPERATING INSTRUCTIONS

1. Tapping the touch sensor (B) on fixture (A) turns light **ON and OFF**.
2. Pressing the touch sensor (B) for 3 seconds **dims** the light.



CARE AND MAINTENANCE

- Wipe fixture with soft, damp cloth. Do not use an abrasive cleaner on fixture.

TROUBLESHOOTING

⚠ WARNING: Before beginning work, shut off the power supply to avoid electrical shock.

PROBLEM	POSSIBLE CAUSE	CORRECTIVE ACTION
Light does not come on initially or no longer comes on.	1. Power is OFF. 2. Faulty connection. 3. LED component is not working properly. 4. Fixture is not plugged in.	1. Make sure power supply is ON. 2. Repeat Step 4. Check wiring and all connections. 3. Contact Customer Service. 4. Plug fixture into outlet.
Fuse blows out or circuit breaker trips.	1. Crossed wires. 2. Power wire is grounding out.	1. Check wiring. 2. Check all connections.

WARRANTY

The distributor warrants all of its lighting fixtures against defects in materials and workmanship for five (5) years from the date of purchase. If within this period the product is found to be defective, take a copy of the bill of sale as a proof of purchase and the product in its original carton to the place of purchase. The distributor will, at its option, repair, replace or refund the purchase price to the consumer. All costs of installation and removal of the fixture is the responsibility of the consumer. This warranty does not cover fixtures becoming defective due to misuse, accidental damage or improper handling and/or installation and specifically excludes liability for direct, incidental or consequential damages. As some states do not allow exclusions of limitations on an implied warranty, the above exclusion and limitation may not apply. This warranty gives you specific rights and you may also have other rights which may vary from state to state.