

**KEEP OUT OF  
REACH OF CHILDREN**

Active Ingredient:  
Metofluthrin.....4%  
Other.....96%  
Total.....100%

**CAUTION** See packaging  
for additional precautionary  
statements, first aid, directions  
for use and storage and disposal.

EPA Reg. No. 9688-356      EPA Est. Nos. 97567-MD-1 (TC),  
102401-PRT-1 (PT). Circled letter is first letter of lot number.

Chemsico, a Division of United Industries Corporation  
PO Box 142642, St. Louis, MO 63114-0642      17-19729

**Net Contents 0.19 fl oz**

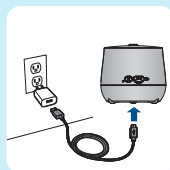
**Cutter** ECLIPSE.  
ZONE  
**MOSQUITO**  
REPELLENT

QUICK START GUIDE

1

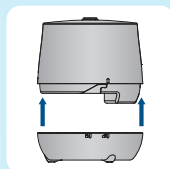
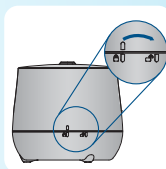
**Charge device  
before initial use.**

*Charging block not included.*



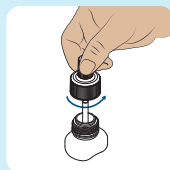
2

**Twist, unlock  
and remove  
the cover.**



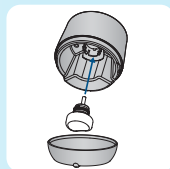
3

**Remove the cap  
from the refill.**



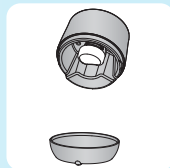
4

**Turn repellent bottle  
as shown.**



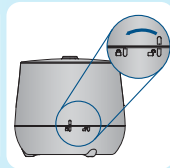
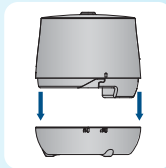
5

**Insert the bottle into the  
device until it clicks in.**



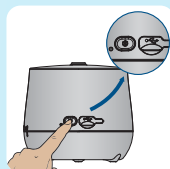
6

**Replace cover,  
twist to lock  
in place.**



7

**Press and hold ON  
button for 3-5 seconds.**



**IMPORTANT: READ ENTIRE LABEL BEFORE USE.**

**For Outdoor Use Only**

## **DIRECTIONS FOR USE**

It is a violation of Federal law to use this product in a manner inconsistent with its labeling.

Do not use indoors.

Do not pry repellent bottle open.

Place one device every 10 to 12 ft around the area you wish to protect.

Use outdoors on patios, decks, unenclosed porches, walkways and other areas where mosquito protection is desired. For coverage for a deck or patio, place one device every 10 to 12 ft around the area you wish to protect.

Do not use or leave device in conditions where temperatures are below 40°F or exceed 110°F.

Always pick up the device by the base, not by the cover.

Let the device run for 15 minutes to establish complete protection.

Operate only with device standing upright.

Turn off the device when not in use.

Prior to transporting or storing the device, remove the repellent bottle and replace the repellent bottle cap.

The claimed hours of repellency are an average based on lab testing and are presumed using 90% of repellent provided. The last 10% of repellent is not claimed, as repellency effectiveness may diminish with reduced wick exposure. Your repellent usage rate will vary based on the temperature and relative humidity.

## **OPERATING INSTRUCTIONS:**

### **UNLOCK THE DEVICE FROM LOCK MODE**

1. The device is locked to prevent accidental powering on during transport/storage.

2. To unlock the device from lock mode:

- Press and hold the POWER button for 3 to 5 seconds to unlock the device from lock mode. • Press and hold the POWER button again for 3 to 5 seconds to activate lock mode. In lock mode, heating is disabled. • Once in lock mode, the device cannot be turned on by pressing the POWER button briefly.

### **INSERT REPELLENT BOTTLE**

1. Insert repellent bottle only when the device is turned OFF.

2. Open the device by unlocking the cover and pulling it up and off. Rotate the cover clockwise to LOCK / Rotate counterclockwise to UNLOCK. Do not pry open the device.

3. Remove cap from repellent bottle. Retain the repellent bottle cap for future use.

4. Insert the repellent bottle into the device. Repellent bottle will snap into place when properly inserted.

5. Replace the cover and rotate into the LOCK position to close the device.

**NOTE: DEVICE WILL NOT REPEL MOSQUITOES UNLESS REPELLENT BOTTLE IS PROPERLY INSERTED.**



### **OPERATING DEVICE**

1. To turn ON, press and hold the POWER button for 2 seconds. LED light will turn on.

2. To turn OFF, press the POWER button. LED light will turn off.



## **STATUS LIGHT FUNCTION DESCRIPTIONS**

### **DEVICE IS ON, BUT NOT CONNECTED TO EXTERNAL POWER:**

Blinking Green – Once device is unlocked, LED will flash green 3 times.

Blinking Red – Battery voltage good for at least 1 hour of use.

Solid Red – Battery voltage sufficient only for a few minutes of use, indicating that recharge is needed.

Solid Green – Device on.

### **WHEN CONNECTED TO EXTERNAL POWER (WHEN DEVICE IS OFF):**

Blinking Green – Charging.

Solid Green – Fully charged.

## **REPLACING THE REPELLENT BOTTLE**

• Replace repellent bottle when liquid is no longer visible in the bottle.

• Do not attempt to refill the repellent bottle.

• The repellent bottle and wick will get hot while in use. Always allow repellent bottle and wick to cool before replacing the repellent bottle. Do not touch or break the wick.

• Replace the repellent bottle only when power to the device is turned off.

• Do not insert anything other than Cutter® Mosquito Repellent Refill (HG-97202) in the device. **Only use Cutter Mosquito Repellent Refill in this device.**



# Cutter®

ECLIPSE™  
ZONE  
MOSQUITO  
REPELLENT

# Cutter®

ECLIPSE™

ZONE  
MOSQUITO  
REPELLENT



- SMART PROTECTION
- NO SCENT
- RECHARGEABLE

INCLUDES  
**40  
HOUR  
REFILL**

For Outdoor Use Only

Active Ingredient:  
Metofluthrin ..... 4%  
Other Ingredients\* ..... 96%  
Total..... 100%  
\*Contains petroleum distillate

**KEEP OUT OF REACH OF CHILDREN**  
**CAUTION** See side panel for additional precautionary statements and directions for use.

TO THE USER: If you cannot read English, do not use this product until the label has been fully explained to you.  
PRECAUCION AL CONSUMIDOR: Si usted no lee inglés, no utilice este producto hasta que la etiqueta le haya sido explicada ampliamente.

Contains Cutter® Eclipse™ Zone Mosquito Repellent device and a 40-hour repellent refill

Contains: 1 - Device • 1 -USB-C Charging Cable  
1 - Cutter Mosquito Repellent Refill – Net Contents 0.19 fl oz (5.70 mL)

**1 YEAR  
LIMITED  
WARRANTY**  
SEE ENCLOSED DETAILS

## HIGH-TECH MOSQUITO REPELLENT DEVICE

REPEL MOSQUITOES WITH THE PUSH OF A BUTTON

PROTECTION IN AS FAST AS 15 MINUTES

PROTECTS YOUR SPACE TO ENJOY THE OUTDOORS



**Perfect For:** Patios • Decks • Outdoor Gatherings

# Cutter

## ECLIPSE™ ZONE MOSQUITO REPELLENT

PROVIDES AN AREA OF  
PROTECTION FOR  
OUTDOOR ENTERTAINING

- Long-lasting protection - lasts up to 5.5 hours on a single charge
- Enjoy your time outdoors
- Protects a 110 sq ft area



### This Package Contains:

- 1 - Cutter® Eclipse™ Zone Mosquito Repellent Device
- 1 - 40-Hour Refill
- 1 - USB-C Charging Cable



IMPORTANT: READ ENTIRE LABEL BEFORE USE.

#### DIRECTIONS FOR USE

It is a violation of Federal law to use this product in a manner inconsistent with its labeling. See insert for additional Directions for Use.

#### STORAGE AND DISPOSAL

Do not contaminate water, food or feed by storage and disposal of repellent unit.

**PESTICIDE STORAGE:** Store in a cool, dry place. Keep container tightly closed. Store refills out of direct sunlight.

**PESTICIDE DISPOSAL AND CONTAINER HANDLING:** Nonrefillable bottle. Do not reuse or refill this bottle.

If empty: Place in trash or offer for recycling if available. If partly filled: Use remaining product according to label directions for use or call your local solid waste agency for disposal instructions. Never place unused product down any indoor or outdoor drain.

#### FIRST AID

##### IF SWALLOWED:

- Immediately call a Poison Control Center or doctor.
- Do not induce vomiting unless told to do so by a Poison Control Center or doctor.
- Do not give **any** liquid to the person.
- Do not give anything by mouth to an unconscious person.

##### HOTLINE NUMBER

Have the product container or label with you when calling a Poison Control Center or doctor, or going for treatment. In case of medical emergencies or health and safety inquiries, or in case of fire, leaking or damaged containers, information may be obtained by calling 1-800-633-2873.

##### NOTE TO PHYSICIAN

Contains petroleum distillate – vomiting may cause aspiration pneumonia.

#### PRECAUTIONARY STATEMENTS

##### HAZARDS TO HUMANS AND DOMESTIC ANIMALS

**CAUTION.** Harmful if swallowed. Wash hands thoroughly with soap and water after handling and before eating, drinking, chewing gum, using tobacco or using the toilet.

##### ENVIRONMENTAL HAZARDS

Do not apply to directly to water, or to areas where surface water is present or to intertidal areas below the mean high-water mark. Do not contaminate water when disposing of equipment washwaters or rinsate.

**NOTICE:** To the extent consistent with applicable law, buyer assumes all responsibility for safety and use not in accordance with directions.

**Questions or Comments?** Call 1-800-767-9927 or visit our website at [www.cutterinsectrepellent.com](http://www.cutterinsectrepellent.com)

Chemisco, a Division of United Industries Corporation, PO Box 142642, St. Louis, MO 63114-0642

EPA Reg. No. 9688-356 EPA Est. Nos. 97567-MO-1 (T), 102401-PRT-1 (PT)

Circled letter is first letter of lot number. 16-14205

© 2023 United Industries Corporation. All Rights Reserved.

PROOF OF PURCHASE

FPO UPC  
0 71121 97030 5

Available  
in 40-Hour  
Refills



# Cutter® Eclipse™ Zone Mosquito Repellent Device Owner's Manual & Warranty Information

**Contains:**  
1 - Device  
1 - USB Battery Charging Cable

## CAUTION

Before use, read all safety warnings and instructions to reduce the risk of electric shock, fire, burns, personal injury or property damage.

### KEEP OUT OF REACH OF CHILDREN

### FOR OUTDOOR USE ONLY. DO NOT OPERATE DEVICE INDOORS.

**⚠ WARNING:** This device can expose you to chemicals, including DEHP, which are known to the state of California to cause cancer and birth defects or other reproductive harm. For more information, go to [www.Prop65Warnings.ca.gov](http://www.Prop65Warnings.ca.gov).



### SAVE THESE INSTRUCTIONS

### IMPORTANT SAFETY INSTRUCTIONS

**WARNING – When using electric products, basic precautions should always be followed, including the following:**

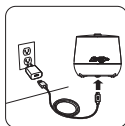
- Read all the instructions before using the product.**
- To reduce the risk of injury, close supervision is necessary when a product is used near children.**
- Do not put fingers or hands into the product.**
- Do not immerse in water.**

Only use this device for its intended use as described in the manual. Do not use attachments, repellent or refills not recommended by the manufacturer.

To reduce the risk of injury, close supervision is necessary when the device is used near children.

### CHARGING

- Only charge your device with the included USB cable. Do not use other cables. Use only with UL 1310 Class2 LPS certified power supply unit that supplies 5V DC 1000 mA. If you are unsure about whether a power supply is compatible with your device, contact 1-800-767-9927.
- A 5V DC1000 mA charger will charge the device in about 5 hours. Do not use an extension cord or a voltage converter with this device.
- Ensure the device is turned OFF before charging. Always attach the USB cable to the device, then attach the USB cable to the charger and into the outlet.
- To disconnect, remove the charger from the outlet. Always pull the charger from the outlet. Do not pull on the USB cable to prevent exposing cable wires or bending/breaking charger prongs.
- Occasionally check the USB cable and charger for signs of wear and damage. Do not use a USB cable or charger with exposed wire, damaged/missing ports or bent/missing prongs.



### BATTERY

- The battery in the device is not replaceable or serviceable.** Do not attempt to open your device to access, repair or replace the battery. Please contact us at 1-800-767-9927 if you need battery or power management support for your device.
- If the battery inside the device reaches a temperature above 140°F (60°C), the device will automatically turn off. Allow the battery inside the device to cool by moving it to a well ventilated area before reactivating.
- If any swelling, leaking, excessive heat or smoke is noticed coming from this device, turn off or unplug the device immediately.
- In the event of a battery leak, do not allow the liquid to come into contact with skin or eyes. If contact has been made, wash the affected area with large amounts of water and seek medical advice.

### DEVICE

- Ensure the device has adequate ventilation while in use and while charging; do not block the top or bottom. Never drop or insert an object into any of the device's openings.
- The device may become warm to the touch when in use or charging. Always allow the device to cool completely before handling.
- This device is not waterproof. Always ensure your hands are dry when handling this device. Do not let the device encounter precipitative weather. If the device, USB cable or charger becomes wet, turn off or unplug immediately.
- Do not attempt to dry a wet device. Do not attempt to charge or turn on a device after it has become wet. Call us at 1-800-767-9927 for further instructions.
- Do not place your device in areas where temperatures may exceed 140°F (60°C), such as on or near cooking surfaces, cooking appliances, grills, fire pits or open flame. Excessive heating can damage the device or the battery and could cause the device or battery to explode.
- Do not drop, disassemble, crush, bend, deform, puncture, shred or put a high degree of pressure on the device. This can result in damage to the lithium-ion battery and the device, potentially causing physical injury or property damage. Visually inspect the device before each use. If you suspect the device is damaged, contact us at 1-800-767-9927 for further instructions.

### CLEANING

- Ensure the device may become warm to the touch when in use or charging. Always allow the device to cool completely before handling.
- The device is OFF and unplugged from the outlet. Using a dry, lint- and static-free cloth, gently wipe the device to remove any dust or debris.

**Before operating the device, read the important safety instructions.**

### DEVICE CHARGING

- Fully charge before first use. Charging should be performed at a temperature between 40°F and 110°F. Insert the USB cable into the device. Plug the USB cable into a standard 5V charger.
- Fully charging the battery takes up to 5 hours. Battery is charging when status light is blinking. Battery is fully charged when the status light is solid green.
- Device operates with a charged battery or plugged into outdoor outlet.
- Do not operate device indoors.**

### DEVICE STORAGE

- This device contains a rechargeable lithium-ion battery. Do not store the device with the USB cable plugged in or wrapped around the device.
- Store the device and USB cable indoors in a dry location at temperatures between 40°F and 110°F.
- Store the device in an area inaccessible to children and pets.
- Do not store with device completely discharged for extended periods of time.
- Device should be charged at least once every 3 months. Device should be discharged and charged after being stored more than a year in order to maintain optimal battery capacity.

### DEVICE DISPOSAL

This device contains a rechargeable lithium-ion battery, which is not replaceable or serviceable. Do not attempt to open the device to access, repair or replace the battery.

When the device reaches the end of its useful life and no longer holds a charge, the presence of a lithium-ion battery requires that the device be disposed of properly. Do not dispose of the device or battery in a fire or incinerator, as the battery may explode when overheated. Contact a local solid waste agency for recycling instructions in accordance with state and local requirements.

For additional questions about device disposal, contact us at 1-800-767-9927 for more information.

CAUTION: ALL DEVICES MUST BE RECYCLED OR DISPOSED OF IN ACCORDANCE WITH APPLICABLE STATE AND LOCAL REGULATIONS PERTAINING TO RECHARGEABLE BATTERIES. DO NOT PUT IN FIRE OR MUTILATE, AS THE BATTERY MAY BURST OR RELEASE TOXIC MATERIALS. DO NOT SHORT-CIRCUIT, AS THIS MAY CAUSE BURNS.

#### WARRANTY – DEVICE

##### Limited 1 Year Warranty

United Industries Corporation warrants this device against any defects that are due to faulty material or workmanship for a 1-year period from the original date of consumer purchase. This warranty does not include damage to the device resulting from accident or misuse.

KEEP ORIGINAL SALES RECEIPT AS PROOF OF PURCHASE FOR WARRANTY PURPOSES.

This warranty does not cover devices damaged by the following:

- Accident, misuse, abuse or alteration of the device
- Use with unauthorized accessories
- Connecting it to an incorrect charger
- Any other conditions beyond our control

No responsibility, obligations or liability is assumed for the installation or maintenance of this product.

Warranty excludes refills.

If the device should become defective within the warranty period, we will replace it free of charge. BEFORE RETURNING DEVICE, contact us at 1-800-767-9927 for more information concerning shipping regulations.

**United Industries Corporation SHALL NOT BE RESPONSIBLE FOR ANY INCIDENTAL, SPECIAL OR CONSEQUENTIAL DAMAGES RESULTING FROM THE USE OF THIS DEVICE. ALL IMPLIED WARRANTIES, INCLUDING BUT NOT LIMITED TO IMPLIED WARRANTIES OF FITNESS AND MERCHANTABILITY, ARE LIMITED IN DURATION TO 1 YEAR FROM DATE OF ORIGINAL PURCHASE.**

This warranty gives you specific legal rights and you may also have other rights which vary from state to state. Some states do not allow the exclusion or limitation of incidental, special or consequential damages.

**This warranty shall not be valid where it is contrary to U.S. and other applicable laws, or where the warranty would be prohibited under any economic sanctions, export control laws, embargoes, or other restrictive trade measures enforced by the United States or other applicable jurisdictions. This includes, without limitation, any warranty claims implicating parties from, or otherwise located in, Cuba, Iran, North Korea, Syria and the disputed Crimea region.**

##### United Industries Corporation Money-Back Offer\*

If within 60 days after purchasing the device you are not completely satisfied and would like a refund, return it with the original dated sales receipt to receive a full refund.\*\* BEFORE RETURNING DEVICE, contact us at 1-800-767-9927 for more information concerning shipping regulations.

\*Applies to US customer returns only

\*\*Terms and conditions apply

##### Terms and Conditions

1. Refund will be in the form of a check issued in U.S. dollars and will be provided only if all terms and conditions are met.
2. The following items must be returned to United Industries Corporation and postmarked no later than 60 days after purchase of the device:
  - a. The device
  - b. The original sales receipt indicating price and date purchased
3. In addition, United Industries Corporation, in its discretion, must determine that the returned device was used in accordance with this Owner's Manual and any other materials provided herewith.
4. Returns should be mailed prepaid (no collect returns accepted) to United Industries Corporation, ATTN: Consumer Care, at the address provided when calling.
5. Refund does not include postage costs for the return of the product but will include applicable taxes paid by buyer, if any.
6. No responsibility will be accepted for late, lost, stolen, misdirected or damaged product.
7. Please allow 4-6 weeks to receive your refund by check.

**NOTICE: To the extent consistent with applicable law, buyer assumes all responsibility for safety and use not in accordance with directions.**

Before use, read all safety warnings and instructions to reduce the risk of electric shock, fire, burns, personal injury or property damage. If you have questions, please contact us at 1-800-767-9927 or visit [www.cutterinsectrepellent.com](http://www.cutterinsectrepellent.com).

Conforms To UL STD. 283

Certified To CSA STD. C22.2 No.64

#### Supplier's Declaration of Conformity

47 CFR §2.1077 Compliance Information

**Cutter® Eclipse™ Zone Mosquito Repellent Device**

**Model No. HG-97030**

**Test Report No. 220215060GZU-001**

#### FCC Compliance Statement

This device complies with part 15 of the FCC Rules. Operation is subject to the following two conditions: (1) this device may not cause harmful interference, and (2) this device must accept any interference received, including interference that may cause undesired operation.

*Note:* This equipment has been tested and found to comply with the limits for a Class B digital device, pursuant to part 15 of the FCC Rules. These limits are designed to provide reasonable protection against harmful interference in a residential installation.

This equipment generates, uses, and can radiate radio frequency energy and, if not installed and used in accordance with the instructions, may cause harmful interference to radio communications. However, there is no guarantee that interference will not occur in a particular installation.

If this equipment does cause harmful interference to radio or television reception, which can be determined by turning the equipment off and on, the user is encouraged to try to correct the interference by one or more of the following measures:

- Reorient or relocate the receiving antenna.
- Increase the separation between the equipment and receiver.
- Connect the equipment to an outlet on a circuit different from that to which the receiver is connected.
- Consult the dealer or an experienced radio/TV technician for help.

Any changes or modifications to this product could void the electromagnetic compatibility (EMC) and wireless compliance and negate your authority to operate the product.

Responsible party (contact for FCC matters only):

United Industries Corporation

One Rider Trail Plaza Dr., Ste. 300

Earth City, MO 63045-1313

1-800-767-9927