



HARBOR BREEZE® and logo design are trademarks or registered trademarks of LF, LLC. All rights reserved.

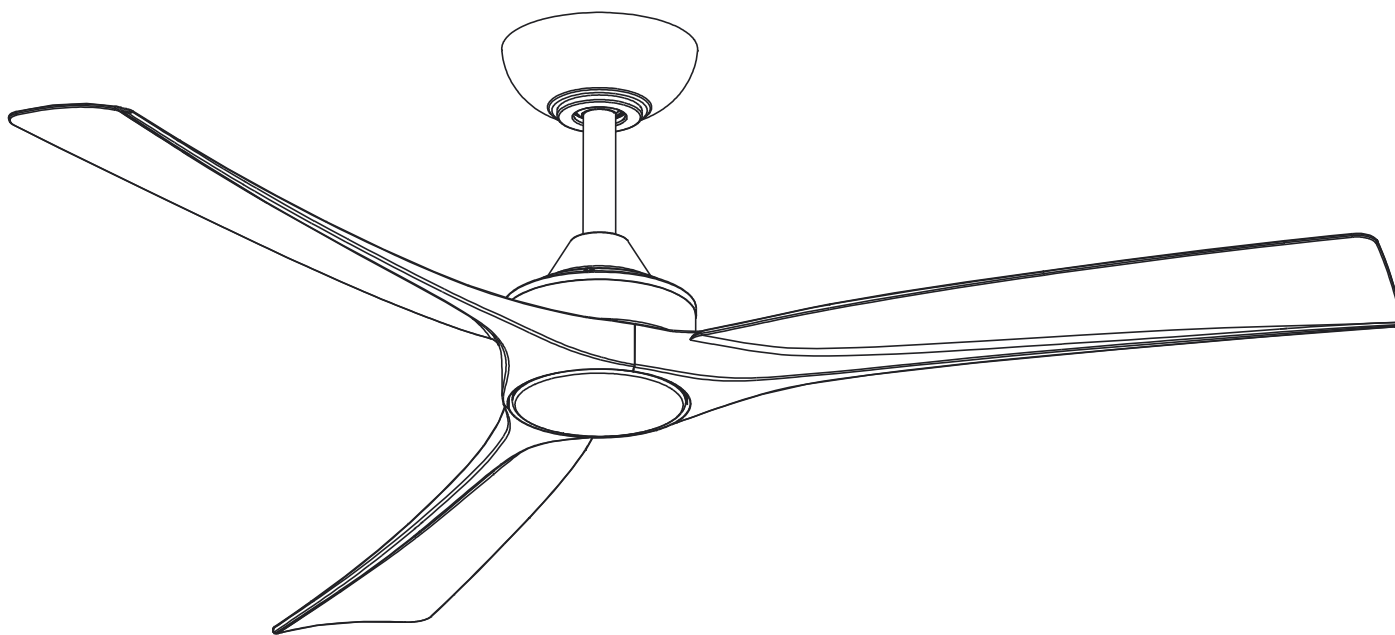
ITEM #5613098

52" CALAVAR CEILING FAN

MODEL #84401

Español p. 19

ATTACH YOUR RECEIPT HERE



ATTACH YOUR RECEIPT HERE

Serial Number _____ Purchase Date _____



Questions, problems, missing parts? Before returning to your retailer, call our customer service department at **888-251-1003**, 8 a.m. - 8 p.m., EST, Monday - Sunday. You could also contact us at partsplus@lowes.com.

SC22340

TABLE OF CONTENTS

Safety Information	2
Package Contents	4
Hardware Contents	5
Preparation	5
Initial Installation	5
Assembly-Hanging The Fan	7
Assembly-Making The Electrical Connection	8
Installing The Blades And Light Kit	11
Operating Instructions	13
Care and Maintenance	16
Troubleshooting	17
Limited Lifetime Warranty.....	18
Replacement Parts List	18



SAFETY INFORMATION

READ AND SAVE THESE INSTRUCTIONS

- Do not discard fan carton or foam inserts. Should this fan need to be returned to the factory for repairs, it must be shipped in its original packaging to ensure proper protection against damage that might exceed the initial cause for return.
- Make sure all electrical connections comply with local codes, ordinances, the National Electrical Code and ANSI/NFPA 70-1999. Hire a qualified electrician or consult a do-it-yourself wiring handbook if you are unfamiliar with installing electrical wiring.
- Make sure the installation site you choose allows a minimum clearance of 7 ft. from the blades to the floor and at least 30 in. from the end of the blades to any obstruction.
- After you install the fan, make sure all connections are secure to prevent the fan from falling.
- The net weight of this fan is: 10.36 lbs.



SAFETY INFORMATION

⚠ WARNING



To reduce the risk of fire, electrical shock or personal injury, mount fan to outlet box marked "ACCEPTABLE FOR FAN SUPPORT OF 35 LBS. OR LESS" and use mounting screws provided with the outlet box. Most outlet boxes commonly used for the support of lighting fixtures are not acceptable for fan support and may need to be replaced. Consult a qualified electrician if in doubt.

When mounting fan to a ceiling outlet box, use a METAL octagonal outlet box; do NOT use a plastic outlet box. Secure the outlet box directly to the building structure. The outlet box and its support must be able to support the moving weight of the fan (at least 35 lbs.).

To avoid personal injury, the use of gloves may be necessary while handling fan parts with sharp edges.

To reduce the risk of fire, electrical shock or personal injury, wire connectors provided with this fan are designed to accept only one 12-gauge house wire and two lead wires from the fan. If your house wire is larger than 12-gauge or there is more than one house wire to connect to the corresponding fan lead wires, consult an electrician for the proper size wire connectors to use.

To reduce the risk of fire or electrical shock, do not use the fan with any solid state speed control device or control fan speed with a full range dimmer switch.

To reduce the risk of fire, electrical shock or personal injury, do not bend the blades when installing or balancing them, or cleaning the fan. Do not insert objects between the rotating fan blades.

To reduce the risk of personal injury, use *only* parts provided with this fan. The use of parts *OTHER* than those provided with this fan will void the warranty.

Before proceeding, be sure to shut off electricity at main switch or circuit breaker in order to avoid electrical shock.

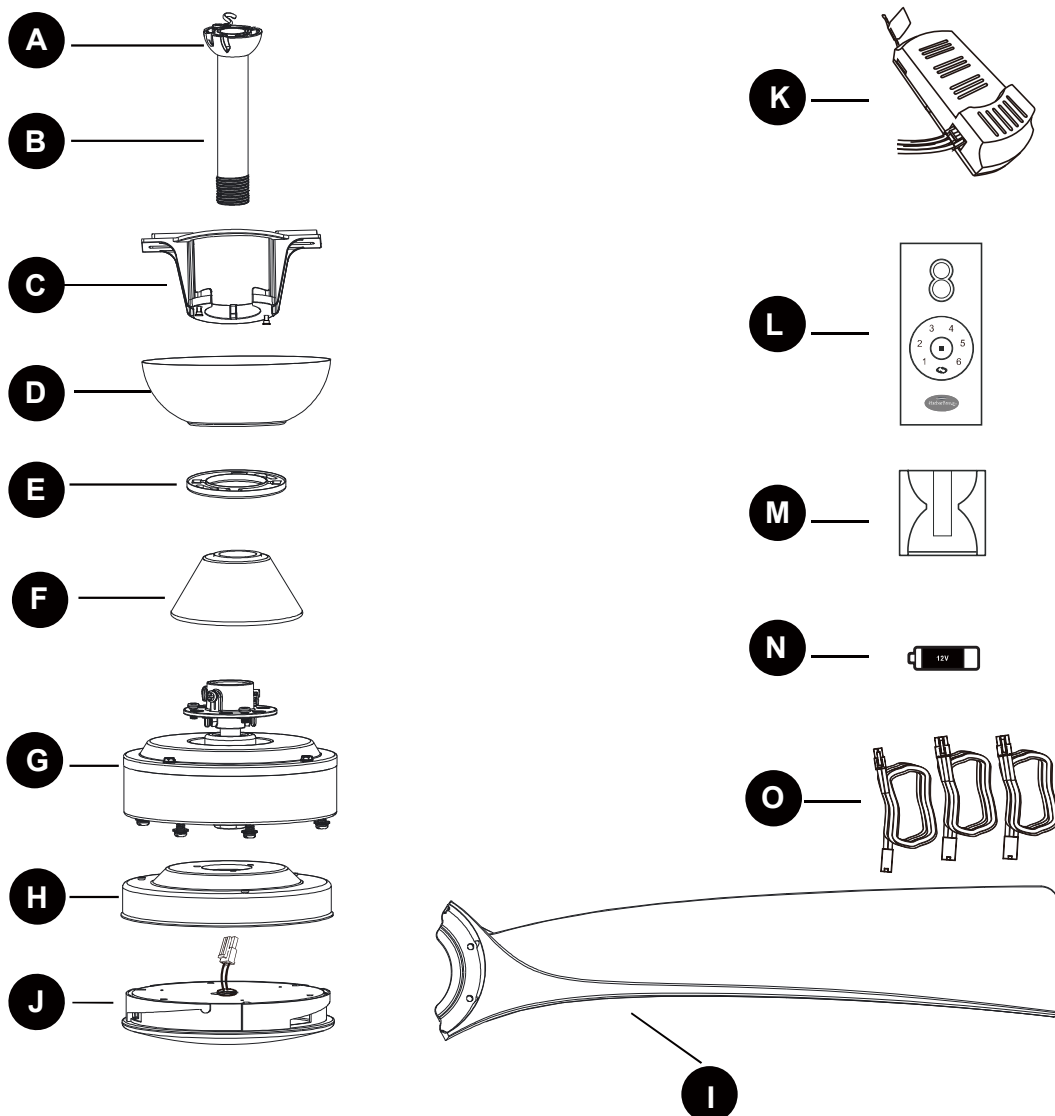
CAUTION

Be sure outlet box is properly grounded and that a ground wire (green or bare) is present.

Before beginning installation, carefully check all screws, bolts and nuts on fan motor assembly to ensure that they are secured.

Do NOT tamper with or attempt to repair LED component. The light source is designed for this specific application and should not be serviced by untrained personnel. If any servicing is required, call our customer service department.

PACKAGE CONTENTS



PART	DESCRIPTION	QUANTITY
A	Hanger Ball (preassembled)	1
B	Downrod (preassembled)	1
C	Mounting Bracket	1
D	Canopy	1
E	Canopy Cover	1
F	Coupling Cover	1
G	Fan Motor Assembly	1
H	Light plate	1

PART	DESCRIPTION	QUANTITY
I	Blade	3
J	18 W LED Assembly	1
K	Receiver	1
L	Transmitter	1
M	Transmitter Holder	1
N	12V Battery	1
O	Extension power cord (18+24+24 inch)	1

⚠ IMPORTANT REMINDER: You must use the parts provided with this fan for proper installation and safety.

HARDWARE CONTENTS (shown actual size)

AA



Blade Screw
(Preassembled)
Qty. 6
+ 1 extra

BB



Remote Control
Holder Mounting
Screws
Qty. 2

CC



Wire Nuts
Qty. 3

DD



Balancing
Kit
Qty. 1

PREPARATION

Before beginning assembly of product, make sure all parts are present. Place motor on carpet or on foam to avoid damage to finish. Compare parts with package contents list and hardware contents list. If any part is missing or damaged, do not attempt to assemble the product.

Estimated Assembly Time: 120 minutes

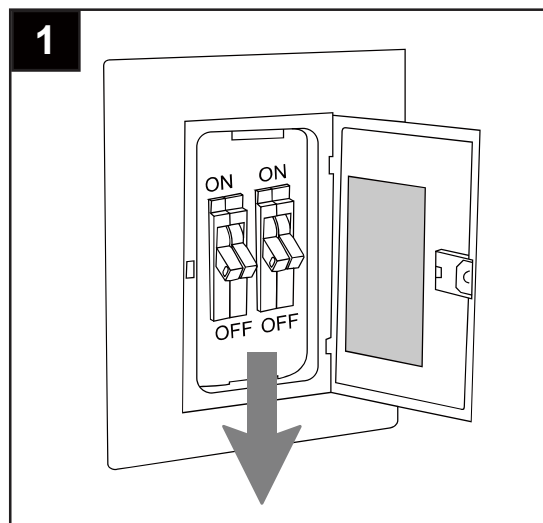
Tools Required for Assembly (not included): Electrical Tape, Phillips Screwdriver, Pliers, Safety Glasses, Stepladder and Wire Strippers

Helpful Tools (not included): AC Tester Light, Tape Measure, Do-It-Yourself Wiring Handbook and Wire Cutters

INITIAL INSTALLATION

1. Turn off circuit breakers and wall switch to the fan supply line leads.

⚠ DANGER: Failure to disconnect power supply prior to installation may result in serious injury or death.

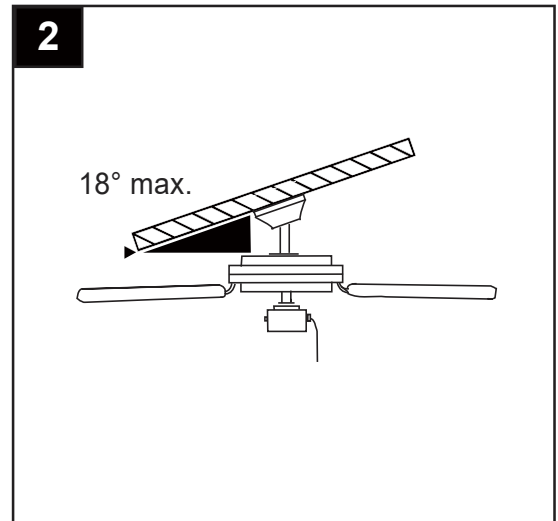


INITIAL INSTALLATION

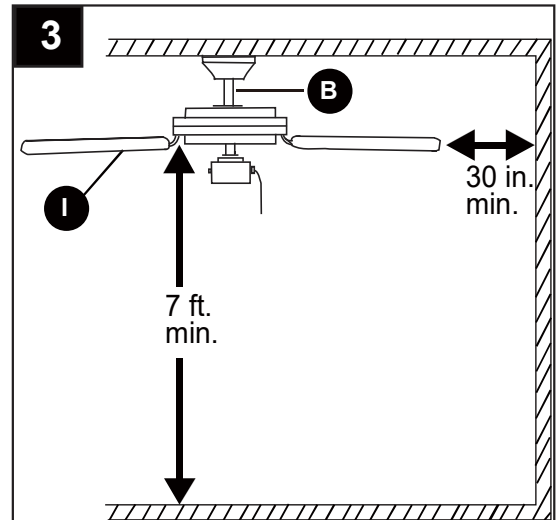
2. Determine mounting method to use.

IMPORTANT: If using the angle mount, check to make sure the ceiling angle is not steeper than 18°.

***Helpful Hint:** Downrod-style mounting is best suited for ceilings 8 ft. or higher. For taller ceilings you may want to use a longer downrod (not included). Angle-style mounting is best suited for angled or vaulted ceilings. A longer downrod is sometimes necessary to ensure proper blade clearance. Closemount mounting is more suitable for ceilings lower than 8 ft. high.



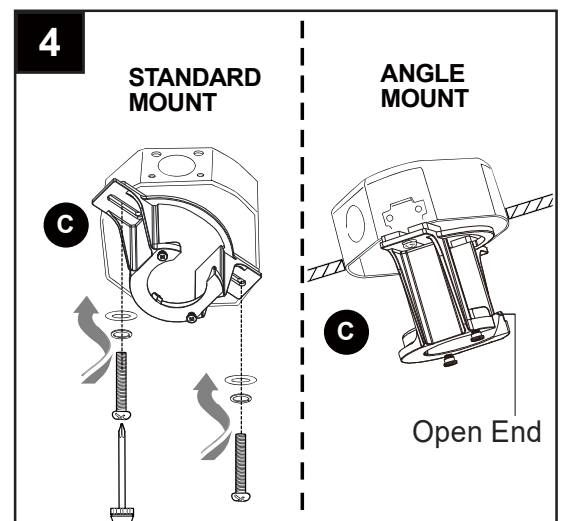
3. Check to make sure blades (I) will be at least 30 in. from any obstruction. Check downrod (B) length to ensure blades (I) are at least 7 ft. above the floor. [Fig. 3]



4. Secure mounting bracket (C) to outlet box (not included) using screws, spring washers and flat washers provided with the outlet box.

***NOTE:** It is very important you use the proper hardware when installing the mounting bracket (C) as this will support the fan.

IMPORTANT: If using the angle mount, make sure open end of mounting bracket (C) is installed facing the higher point of the ceiling, and ensure the ceiling angle is not steeper than 18°.

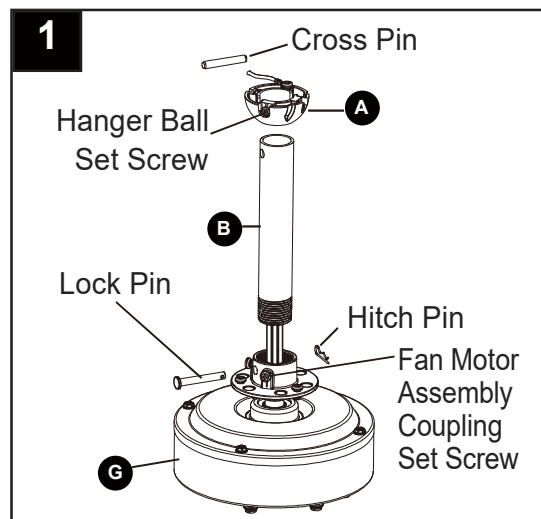


ASSEMBLY-HANGING THE FAN

1. Remove the hanger ball (A) from the downrod (B) by loosening the hanger ball set screw, and removing the cross pin, then sliding the hanger ball (A) off of the downrod (B).

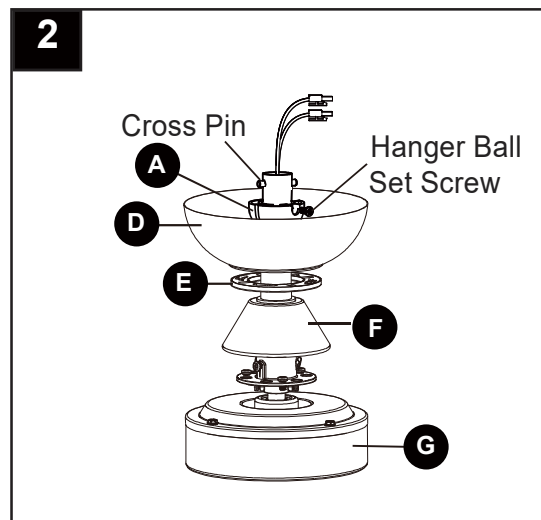
Loosen the two set screws from the fan motor assembly coupling, Remove the hitch pin and lock pin from the fan motor assembly (G).

Carefully feed the fan wires up through the downrod (B). Thread the downrod (B) into the fan motor assembly (G) coupling. Line up the holes and replace the lock pin and the hitch pin. Tighten the set screws.



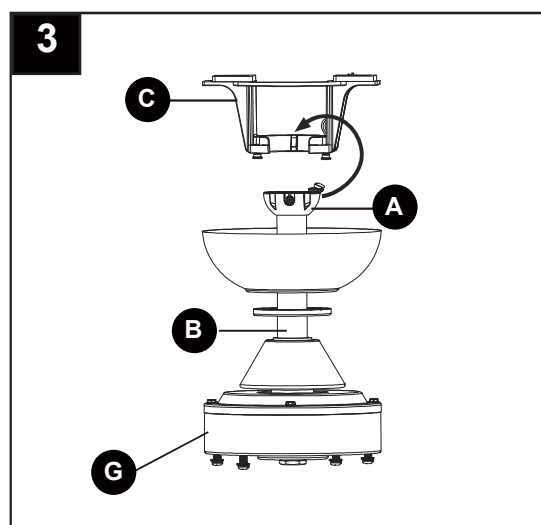
2. Slip the coupling cover (F), canopy cover (E), and canopy (D) onto the downrod.

Carefully reinstall the hanger ball (A) onto the downrod, and ensure that the cross pin is in the correct position, the set screws are tight, and the wires are not twisted.



3. Hanging the fan motor assembly to the mounting bracket.

Lift the fan motor assembly (G) into position, and place the hanger ball (A) into the mounting bracket (C). Rotate the fan motor assembly (G) until the check groove drops into the registration slot and seats firmly. The downrod should not rotate if this is done correctly.



ASSEMBLY-MAKING THE ELECTRICAL CONNECTION

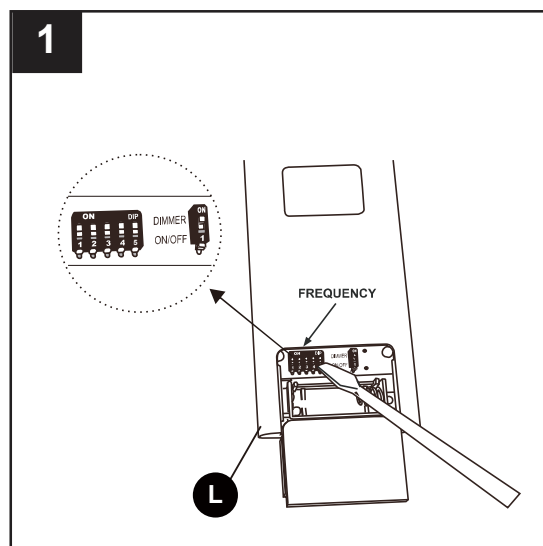
⚠ WARNING: To reduce the risk of fire, electrical shock or personal injury, wire connectors provided with this fan are designed to accept only one 12-gauge house wire and two lead wires from the fan. If your house wire is larger than 12-gauge or there is more than one house wire to connect to the corresponding fan lead wires, consult an electrician for the proper size wire connectors to use.

⚠ CAUTION: Be sure outlet box is properly grounded and that a ground (green or bare) wire is present.

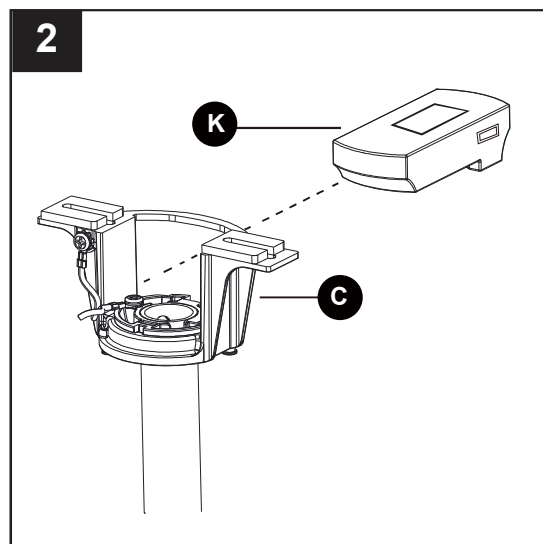
⚠ WARNING: If house wires are different colors than referred to in the following steps, stop immediately. A professional electrician is recommended to determine wiring.

⚠ WARNING: Using a full range dimmer switch (not included) to control fan speed will cause a loud humming noise from fan. To reduce the risk of fire or electrical shock, do NOT use a full range dimmer switch to control fan speed.

1. This DC motor fans is equipped with a learning frequency function which has 32 code combinations to prevent potential interference from other remote units. The frequency on your Receiver (K) and Remote control (L) have been preset at the factory. No frequency change is necessary, should you desire to install another DC motor fan within the same home or area with a separate frequency code please see the “operation instructions” section of this instruction manual to learn how to change the frequency.



2. Insert the receiver (K) into the mounting bracket (C) with the flat side of the receiver (K) facing the ceiling.



ASSEMBLY-MAKING THE ELECTRICAL CONNECTION (CONTINUED)

3. Making the electrical connections



WARNING: To avoid possible electrical shock, ensure the electricity is turned off at the circuit breaker or main fuse box before wiring.



WARNING: Check to see that all connections are tight, including the ground, and that no bare wire is visible at the wire nuts, except for the ground wire.

Follow the steps below to connect the fan to your house supply wires. Secure the wire nuts supplied with your fan by wrapping the connections with electrical tape.

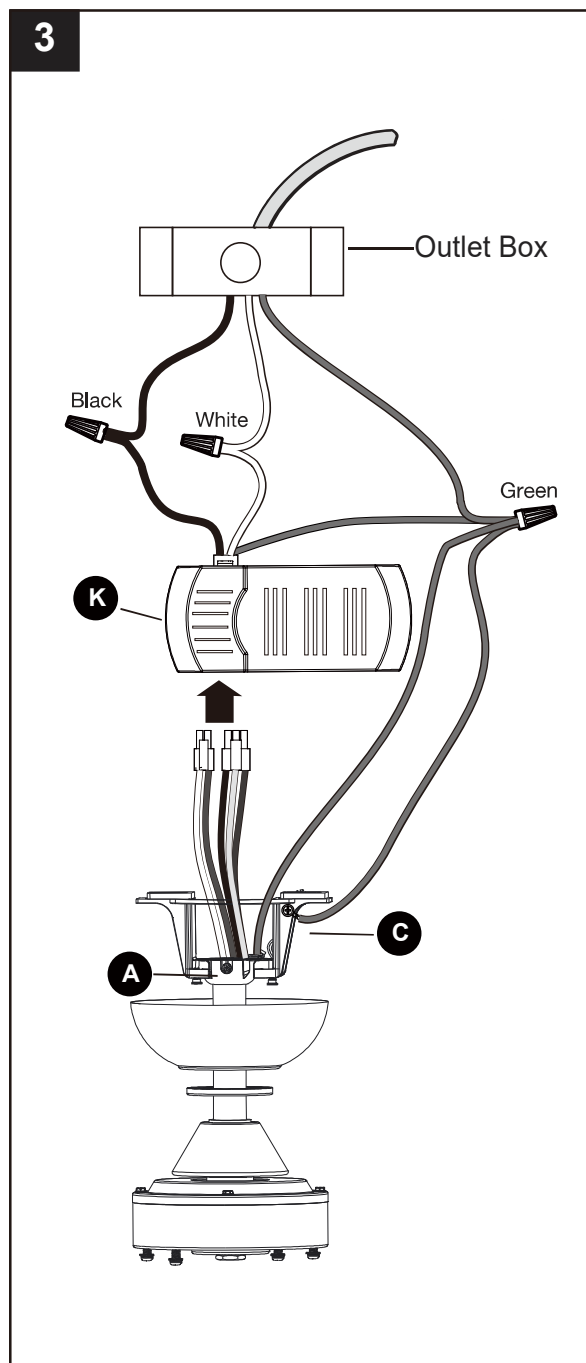
Connect the male connectors from fan to the female connectors from the receiver(K).

NOTE: Fan must be installed from a maximum distance of 40 feet from the transmitting unit for proper signal transmission between the transmitting unit and the fan's receiving unit.

Receiver to House Supply Wires Electrical Connections: Connect the WHITE wire (Neutral) from the outlet box to the WHITE wire marked "AC in N" from the receiver (K). Connect the BLACK wire (Hot) from the outlet box to the BLACK wire marked "AC in L" from the receiver (K). Secure all wire connections with the plastic wire nuts provided.

If your outlet box has a GROUND wire (Green or Bare Copper) connect this wire to the Hanger Ball (A), Hanger Bracket (C) and Receiver (K) Ground wires. If your outlet box does not have a Ground wire, then connect the Hanger Ball, Hanger Bracket and Receiver Ground wire together. Secure wire connection with the plastic wire nut provided. After all splices are made, check to make sure there are no loose strands. As an additional precaution we suggest to secure the plastic wire connectors to the wires with electrical tape.

NOTE: After making electrical connections, spliced conductors should be turned upward and pushed carefully up into the outlet box. The wires should be spread apart with the grounded conductor and the equipment-grounding conductor on one side of the outlet box and ungrounded conductor on the other side of the outlet box.



ASSEMBLY-MAKING THE ELECTRICAL CONNECTION (CONTINUED)

4. Wrap electrical tape (not included) around each individual wire connector (CC) down to the wire.

! WARNING: Make sure no bare wire or wire strands are visible after making connections. Place GREEN and WHITE connections on opposite side of the outlet box from the BLACK and BLUE (if applicable) connections.

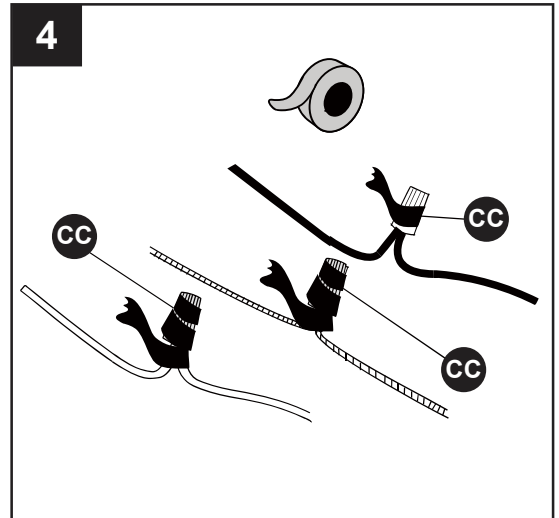
Hardware Used



Wire Connector



x 3



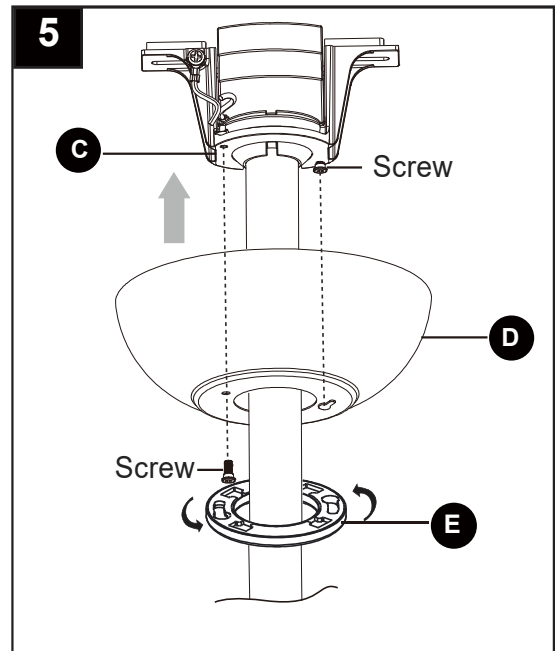
5. Remove one screw from the mounting bracket (C) and loosen the other screw approximately 1/4 turn.

Carefully raise the canopy (D) up to the mounting bracket (C), and ensure the loosened screw is inserted into the keyhole in the canopy (D). Rotate the canopy (D) clockwise.

Secure the canopy (D) by replacing the screw previously removed and tightening the screw previously loosened.

Push up the canopy cover (D) until the screw heads engage to the slots on the canopy cover (D), and rotate the canopy cover (D) until it is attached to the bottom of the canopy (C) properly.

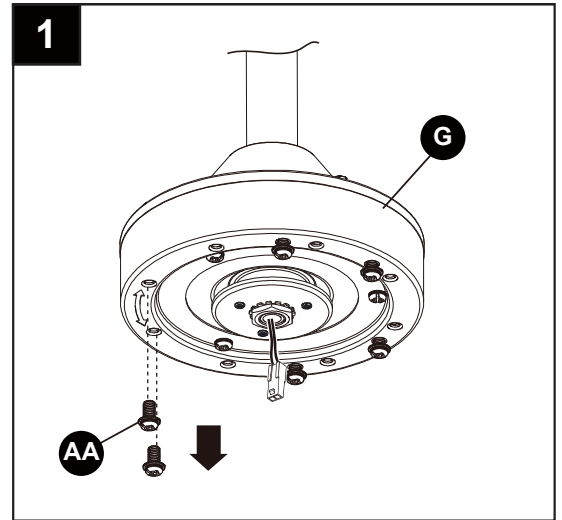
NOTE: Adjust the canopy screws as necessary until the canopy (D) and canopy cover (E) are snug.



INSTALLING THE BLADES AND LIGHT KIT

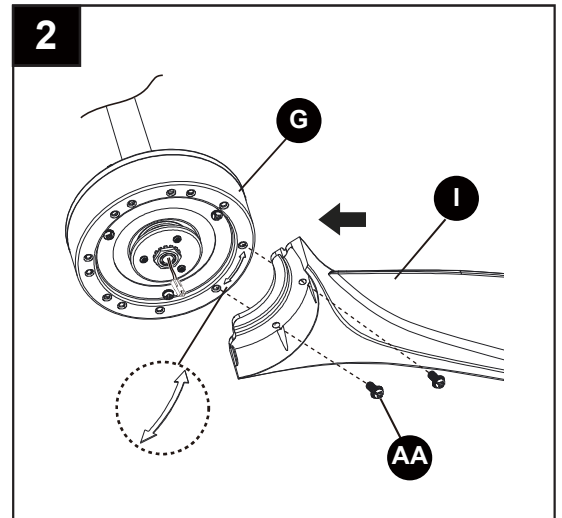
1. Loosen the screws on the fan motor

Remove the six blade screws (AA) from the fan motor assembly (G) . Keep the screws for subsequent steps.



2. Install the fan blades

Pay attention to the arrow on the bottom of the fan motor assembly (G) . Install the blade (I) assembly from the arrow first. Fasten the blade (I) assemblies to the fan motor assembly (G) with the screws (AA).



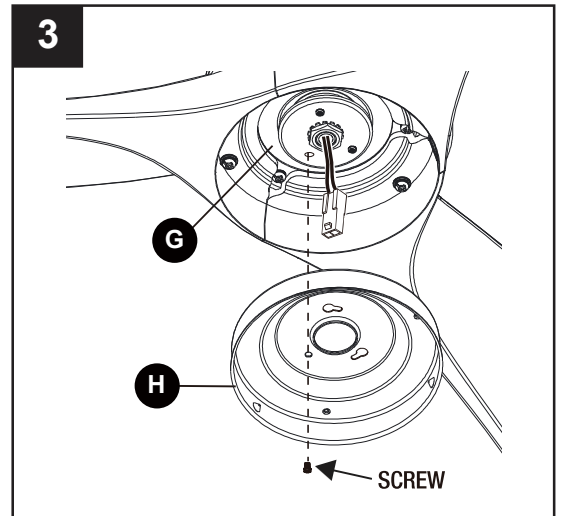
Hardware Used

AA Blade Screw  x 6

3. Install the light plate

Remove 1 of 3 screws from the fan motor assembly (G) and loosen the other 2 screws. (Do not remove)

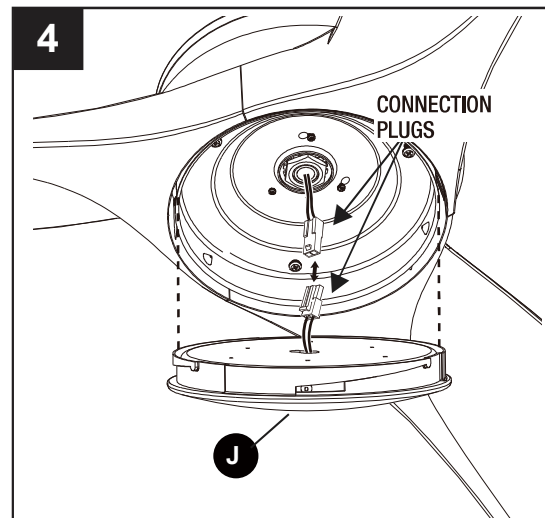
Place the key holes from the light plate (H) over the 2 screws previously loosened from the fan motor assembly, turn the light plate (H) until it locks in place at the narrow section of the key holes. Secure by tightening the 2 screws previously loosened and the one previously removed.



INSTALLING THE BLADES AND LIGHT KIT(CONTINUED)

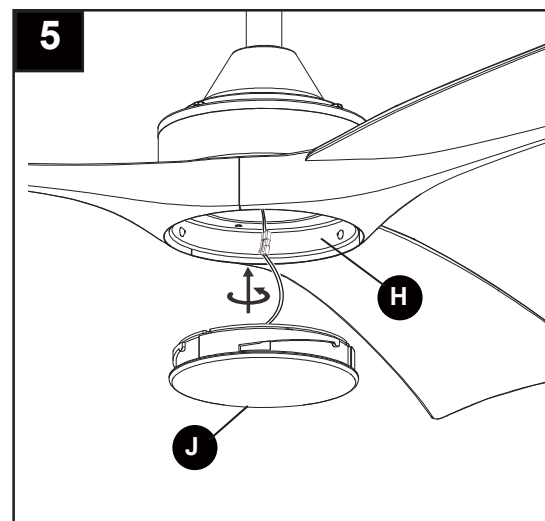
4. Connect the wire

While holding the 18W LED assembly (J) under your fan, firmly snap the wire connection plugs together.



5. Twist the 18W LED assembly tightly

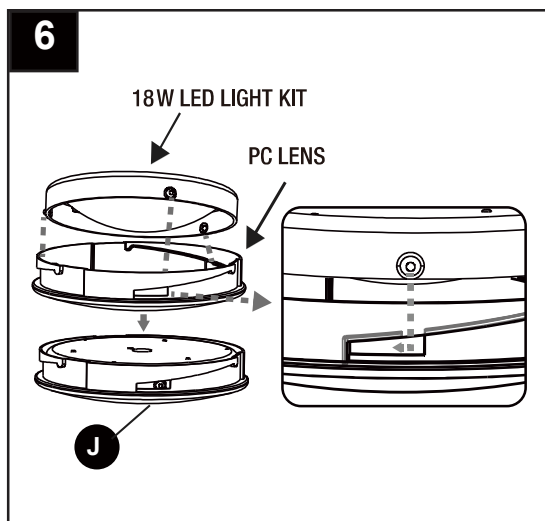
Attach the 18W LED assembly (J) to the light plate (H) by twisting tightly.



NOTE: This integrated light kit is capable of color changing light of 3000,4000 and 5000k.



NOTE: Please follow figure 6 to assemble the LED light kit if the LED assembly was broken.



OPERATING INSTRUCTIONS

⚠ CAUTION: The remote control transmitter can be programmed to multiple receivers or fans. If this is not desired, turn wall switch off to any other programmable receiver or fan.

FCC Compliance Statement: products subject to Part 15

CAUTION: Changes or modifications not expressly approved by the party responsible for compliance could void the user's authority to operate the equipment.

***NOTE:** This equipment has been tested and found to comply with the limits for a Class B digital device, pursuant to Part 15 of the FCC Rules. These limits are designed to provide reasonable protection against harmful interference in a residential installation. This equipment generates, uses and can radiate radio frequency energy and, if not installed and used in accordance with the instructions, may cause harmful interference to radio communications. However, there is no guarantee that interference will not occur in a particular installation. If this equipment does cause harmful interference to radio or television reception, which can be determined by turning the equipment off and on, the user is encouraged to try to correct the interference by one or more of the following measures:

- Reorient or relocate the receiving antenna.
- Increase the separation between the equipment and receiver.
- Connect the equipment into an outlet on a circuit different from that to which the receiver is connected.
- Consult the dealer or an experienced radio/TV technician for help.

CAUTION:

This device complies with Part 15 of the FCC Rules. Operation is subject to the following two conditions:

- (1) This device may not cause harmful interference, and
- (2) this device must accept any interference received, including interference that may cause undesired operation.

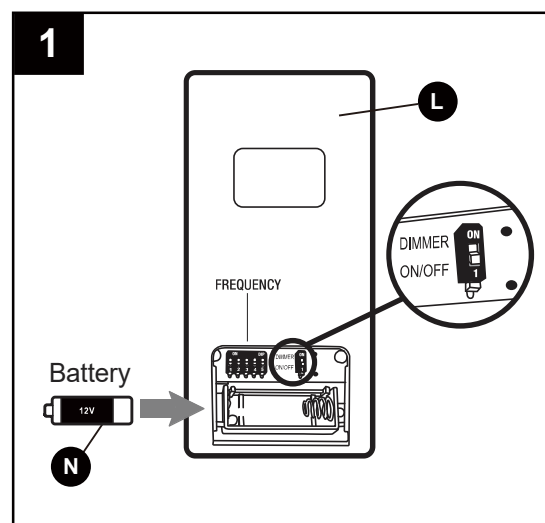
1. Remove battery cover from back of remote control transmitter (L). Install battery (N) with positive (+) end toward top of remote control transmitter.

Replace battery cover on remote control transmitter.

⚠ WARNING: Choking Hazard - Small parts. Keep battery away from children.

⚠ WARNING: Do not short-circuit, disassemble, heat up, connect improperly, or dispose of used batteries in fire. Do not recharge or mix batteries with used or other battery types. Immediately remove used batteries.

⚠ CAUTION: "DO NOT DISPOSE OF BATTERIES IN FIRE, BATTERIES MAY EXPLODE OR LEAK." - When disposing of household alkaline batteries, it is best to check with your local and state recycling or household hazardous waste coordinators concerning the specifics of the program in your area. You may also locate a recycling center by calling 1-800-8-BATTERY or 1-877-2-RECYCLE or visit www.epa.gov/epawaste/index.htm or www.earth911.org for more information.



OPERATING INSTRUCTIONS(CONTINUED)

2. Remote control operating instructions

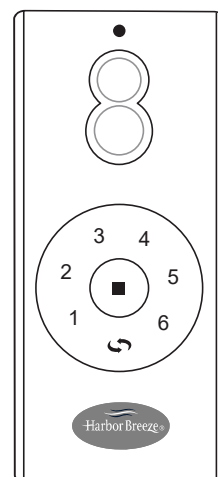
Remote Control only: Install an A23 12 volt battery (included). To prevent damage to transmitter remove the battery if not used for long periods of time.

Your DC brushless motor is equipped with a self learning frequency function remote control. Restore power to the ceiling fan and test the transmitter as below for proper operation:



NOTE: On each start up of your ceiling fan, the fan blades will oscillate back and forth. This is a NORMAL OPERATION for DC motor ceiling fans as they go through a calibration cycle. The fan is NOT DEFECTIVE.

2



2a. 1, 2, 3, 4, 5 and 6 button:

These six buttons are used to set the fan speed as follows:

- | | |
|----------------------|-----------------------|
| 1 = minimum speed | 4 = medium speed |
| 2 = low speed | 5 = medium high speed |
| 3 = medium low speed | 6 = high speed |

2b. Reverse Button:

This button is used to change the direction of the rotation of the blades; counterclockwise for summer weather or clockwise for winter weather.

2c. Button:

This button turns the power Off to the Fan.

2d. Top Button:

This button to select the desired color temperature.

NOTE: To change the color temperature of the light press the button once to cycle between the light temperature. The light must be powered on.

2e. Bottom Button:

This button turns the light ON or OFF and also control the brightness settings of the light. Press and release the button for the desired light to turn the light ON or OFF. Press and hold the button to set the desired light brightness. The light will cycle between bright and dim settings as long as the button is pressed. The light key has an automatic auto-resume feature that allows the light to remain at the same brightness as the last time it was turned off.

3. Pairing process



NOTE: The pairing function will only mandate within 30 seconds when turning the fan's AC power ON.

Select desired frequency from the back of transmitter.

Press the transmitter's "■" button, and hold the "■" button for over 5 seconds. Once the receiver has detected the frequency, the fan will automatically begin to operate and start to run for 10 seconds. If a light kit is installed, the light will blink two times.

OPERATING INSTRUCTIONS(CONTINUED)



NOTE: The learning frequency function and self calibration test will continue to retain the last set frequency and calibration set even when the AC power is shut off. If the frequency is changed, the self calibration test will occur again.

3a. Lock position:

The DC motor has a built-in safety against obstruction during operation. The motor lock's and disconnect's power after 30 seconds if interruption occurs. Please remove obstacles before re-setting.

3b. Over 40W protection:

When the receiver detects motor power consumption which is greater than 40W, the receiver's power will stop and operation will be immediately discontinued. Turn the receiver power on after 5 seconds.

3c. "Dimmer" and "ON/OFF" dip switch:

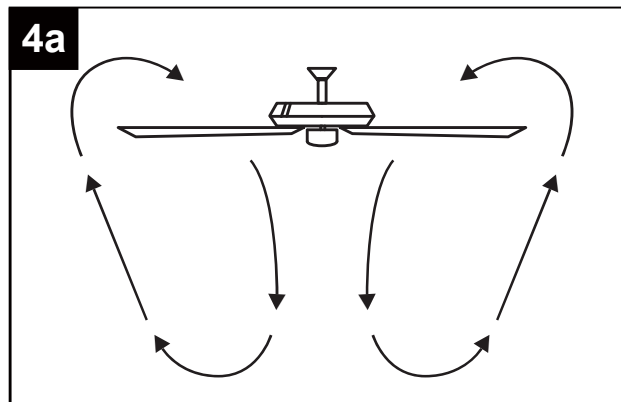
The "Dimmer" selection is the light dimmable selection and is to be used with all bulbs except for CFL bulbs. The "ON/OFF" selection is For CFL bulbs.

4. Speed settings for warm or cool weather depend on factors such as the room size, ceiling height, number of fans.

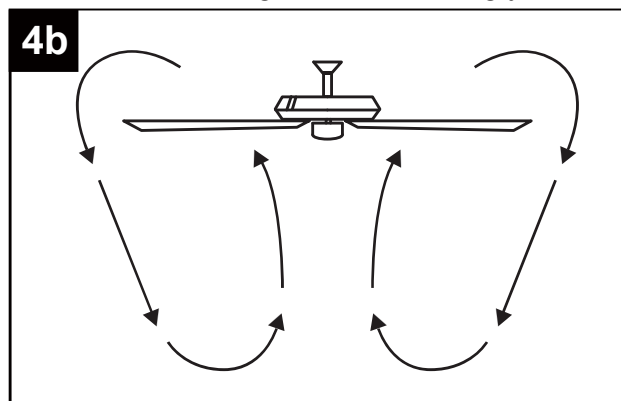


NOTE: The fan reverse buttons must be pressed while the fan is running.

4a. Summer weather - (Counterclockwise Direction) A downward air flow creates a cooling effect. This allows you to set your air conditioner on a warmer setting without affecting your comfort.

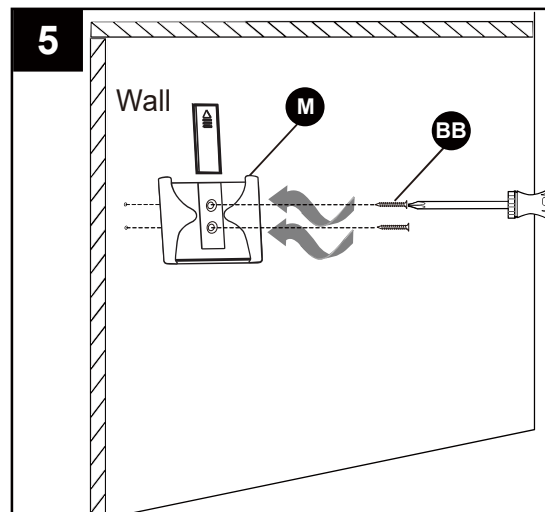


4b. Winter weather - (Clockwise Direction) An upward air flow moves warm air off the ceiling. This allows you to set your heating unit on a cooler setting without affecting your comfort.



OPERATING INSTRUCTIONS(CONTINUED)

5. Attach the remote control holder to the wall with the two remote control holder (M) mounting screws (BB).



CARE AND MAINTENANCE

DO

- Check the support connections, brackets, and blade attachments twice a year. Ensure they are secure. Because of the fan's natural movement, some connections may become loose over time. It is not necessary to remove the fan from the ceiling.
- Clean your fan periodically. Use only a soft brush or lint-free cloth to avoid scratching the finish. The plating is sealed with a lacquer to minimize discoloration or tarnishing.
- (Optional) Apply a light coat of furniture polish to the wood blades.
- (Optional) Cover small scratches with a light application of shoe polish.

DO NOT

- Do not use water when cleaning, Water could damage the motor, or the wood, or possibly cause an electrical shock.
- Do not apply oil to your fan or motor. The motor has permanently lubricated sealed ball bearings.

TROUBLESHOOTING



WARNING: Ensure the power is off at the electrical panel box before you attempt any repairs. Refer to the section "Making the Electrical Connections" on page 9.

PROBLEM	SOLUTION
The fan will not start.	<input type="checkbox"/> Check main and branch circuit fuses or breakers.
	<input type="checkbox"/> Check line wire connections to the fan and switch wire connections in the switch housing.
	<input type="checkbox"/> Re-pairing the transmitter with receiver.
The fan sounds noisy.	<input type="checkbox"/> Make sure all motor housing screws are snug.
	<input type="checkbox"/> Make sure the screws that attach the fan blade arm to the motor hub are tight.
	<input type="checkbox"/> Make sure wire nut connections are not rattling against each other or the interior wall of the switch housing.
	<input type="checkbox"/> Allow a 24-hour "breaking-in" period. Most noises associated with a new fan disappear during this time.
	<input type="checkbox"/> If using the ceiling light kit, make sure the screws securing the glassware are tight. Check that the light bulb is also secure.
	<input type="checkbox"/> Make sure there is a short distance from the ceiling to the canopy. It should not touch the ceiling.
The remote control is not working.	<input type="checkbox"/> Make sure your ceiling box is secure and rubber isolator pads are used between the mounting bracket and outlet box.
	<input type="checkbox"/> Do not connect the fan with wall mounted variable speed control(s).
The fan wobbles.	<input type="checkbox"/> Re-pairing the transmitter with receiver.
	<input type="checkbox"/> Check that all blade and blade arm screws are secure.
	<input type="checkbox"/> Most fan wobble problems are caused when blade levels are unequal. Check this level by selecting a point on the ceiling above the tip of one of the blades. Measure from a point on the center of each blade to the point on the ceiling. Rotate the fan until the next blade is positioned for measurement. Repeat for each blade. Measurement's deviation should be within 1/8 in. Run the fan for 10 minutes.
	<input type="checkbox"/> Use the enclosed blade balancing kit if the blade wobble is still noticeable. Balancing kit includes an additional instruction manual within the packet.

LIMITED LIFETIME WARRANTY

The distributor warrants this fan to be free from defects in workmanship and materials present at time of shipment from the factory for Lifetime limited from the date of purchase. This warranty applies only to the original purchaser. The distributor agrees to correct any defect at no charge or, at our option, replace the ceiling fan with a comparable or superior model.

To obtain warranty service, present a copy of your sales receipt as proof of purchase. All cost of removal and reinstallation are the express responsibility of the purchaser. Any damage to the ceiling fan by accident, misuse or improper installation, or by using parts not produced by the manufacturer of this fan or affixing accessories not produced by the manufacturer of this fan, are the purchaser's own responsibility. The distributor assumes no responsibility whatsoever for fan installation during the limited lifetime warranty. Any service performed by an unauthorized person will render the warranty invalid.

Due to varying climatic conditions, this warranty does not cover changes in brass finish, rusting, pitting, tarnishing, corroding or peeling. Brass finish fans maintain their beauty when protected from varying weather conditions. Any glass provided with this fan is not covered by the warranty.

Any replacement of defective parts for the ceiling fan must be reported within the first year from the date of purchase. For the balance of the warranty, call our customer service department (at **888-251-1003**) for return authorization and shipping instructions so that we may repair or replace the ceiling fan. Any fan or parts returned improperly packaged is/are the sole responsibility of the purchaser. There is no further express warranty. The distributor disclaims any and all implied warranties. The duration of any implied warranty which cannot be disclaimed is limited to the limited lifetime period as specified in our warranty. The distributor shall not be liable for incidental, consequential or special damages arising at or in connection with product use or performance except as may otherwise be accorded by law. This warranty gives you specific legal rights and you may also have other rights which vary from state to state. This warranty supersedes all prior warranties.

REPLACEMENT PARTS LIST

For replacement parts, call our customer service department at **888-251-1003**, 8 a.m. - 8 p.m., EST, Monday - Sunday. You could also contact us at partsplus@lowes.com.

PART	DESCRIPTION	PART#
B	Downrod Without Hanger Ball	DR506-WHF
C	Hanger Bracket	FAN BKT 14
D	Canopy	4084401CC05
E	Canopy Cover	6F866LWHFCA05
F	Coupling Cover	4084401CV05
H	Light Plate	4084401LP01
I	Fan blades	FB84401
J	18W LED assembly	4004750LK01
K	Receiver	DT01048003
L & M	Transmitter with holder	RC400-HB
O	Extension power cord(18")	4084070I12-18
	Extension power cord(24")	4084070I12-24

