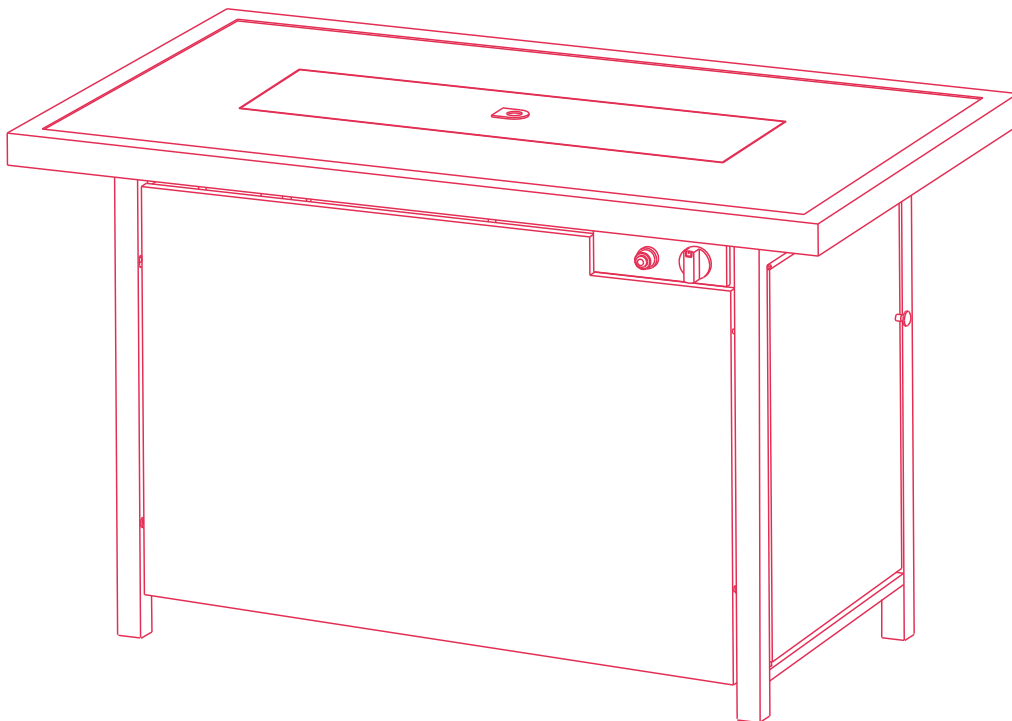


Thank you very much
for purchasing our *Patio Fire Pit*

OWNER'S MANUAL

PAMAPIC Patio Fire Pit



Item Number: TB-HPZ-CK
Model NO.: GLSJ-24427-6100KD

If you have any questions,
please contact customer service:
E-mail: Pamapic@hotmail.com.
Facebook: [@Pamapic.Official](https://www.facebook.com/Pamapic.Official)





⚠ DANGER

FIRE OR EXPLOSION HAZARD

If you smell gas:

- 1.Shut off gas to the appliance.
- 2.Extinguish any open flame.
- 3.If odor continues, keep away from the appliance and immediately call your gas supplier or fire department.

Failure to follow these instructions could result in fire or explosion, which could cause property damage, personal injury, or death.

⚠ WARNING

Do not store or use gasoline or other flammable liquids or vapors in the vicinity of this or any other appliance.
An LP cylinder not connected for use shall not be stored in the vicinity of this or any other appliance.

⚠ WARNING: For Outdoor use Only

Installation and service must be performed by a qualified installer, service agency, or the gas supplier.

INSTALLER: Leave this manual with the appliance.

CONSUMER: Retain this manual for future reference.

⚠ DANGER



CARBON MONOXIDE HAZARD

This appliance can produce carbon monoxide which has no odor.

Using it in an enclosed space can kill you.

Never use this appliance in an enclosed space such as a camper, tent, car or home.

⚠ WARNING: if the information in this manual is not followed exactly, a fire or explosion may result causing property damage, personal injury, or loss of life.

Safety precautions

⚠ DANGER

- 1** Failure to comply with the precautions and instructions provided with this fire pit can result in death, serious bodily injury and property loss or damage from hazards of fire, explosion, burn, asphyxiation, and/or carbon monoxide poisoning. Only persons who can understand and follow the instructions should use or service this fire pit.
- 2** DANGER indicates an imminently hazardous situation which, if not avoided, will result in death or serious injury.
- 3** FOR YOUR SAFETY
If you smell gas:
 1. Shut off gas to the appliance.
 2. Extinguish any open flame.
 3. If odor continues, keep away from the appliance and immediately call your gas supplier or fire department.
- 4** EXPLOSION-FIRE HAZARD
 - Keep solid combustibles, such as building materials, paper or cardboard, a safe distance away from the fire pit as recommended by the instructions,
 - Provide adequate clearances around air openings into the combustion chamber.
 - Never use the fire pit in spaces which do or may contain volatile or airborne combustibles, or products such as gasoline, solvents, paint thinner, dust particles or unknown chemicals.
 - During operation, this product can be a source of ignition. Keep fire pit area clear and free from combustible materials, gasoline, paint thinner, cleaning solvents and other flammable vapors and liquids. Do not use fire pit in areas with high dust content. Minimum fire pit clearances from combustible materials: 65" (165cm) from the top; 48" (121.9cm) from all sides and back.
- 5** EXPLOSION-FIRE HAZARD
 - Never store propane near high heat, open flames, pilot lights, direct sunlight, other ignition sources or where temperatures exceed 120 degrees F (49°C)
 - Propane vapors are heavier than air and can accumulate in low places. If you smell gas, leave the area immediately.
 - Never install or remove propane cylinder while fire pit is lighted, near flame, pilot lights, other ignition sources or while fire pit is hot to touch.
 - This fire pit is red hot during use and can ignite flammables too close to the burner. Keep gasoline and other flammable liquids and vapors well away from fire pit.
 - Store the propane cylinder outdoors in a well ventilated space out of reach of children. Never store the propane cylinder in an enclosed area (house, garage, etc.). If fire pit is to be stored indoors, disconnect the propane cylinder for outdoor storage.
- 6** CARBON MONOXIDE HAZARD
 - This fire pit is a combustion appliance. All combustion appliances produce carbon monoxide (CO) during the combustion process. This product is designed to produce extremely minute, non-hazardous amounts of CO if used and maintained in accordance with all warnings and instructions. Do not block air flow into or out of the fire pit.
 - Carbon Monoxide (CO) poisoning produces flu-like symptoms, watery eyes, headaches, dizziness, fatigue and possibly death. You can't see it and you can't smell it. It's an invisible killer. If these symptoms are present during operation of this product, get fresh air immediately!
 - For outdoor use only.
 - Never use inside house or other unventilated or enclosed areas.
 - This fire pit consumes air (oxygen). Do not use in unventilated or enclosed areas to avoid endangering your life.

Safety precautions

⚠ WARNING

- 1 Do not store or use gasoline or other flammable vapors and liquids in the vicinity of this or any other appliance. An LP-cylinder not connected for use shall not be stored in the vicinity of this or any other appliance.
- 2 WARNING indicates an imminently hazardous situation which if not avoided will result in death or serious injury.
- 3 Improper installation, adjustment, alteration, service or maintenance can cause property damage, injury or death. Read the installation, operation and maintenance instructions thoroughly before installing or servicing this equipment.
- 4 Certain materials or items when stored under the fire pit, will be subjected to radiant heat and could be seriously damaged.
- 5
 - This product is fueled by propane gas. Propane gas is invisible, odorless, and flammable. An odorant is normally added to help detect leaks and can be described as a "rotten egg" smell. The odorant can fade over time so leaking gas is not always detectable by smell alone.
 - Propane gas is heavier than air and leaking propane will sink to the lowest level possible. It can ignite by ignition sources including matches, lighters, sparks or open flames of any kind many feet away from the original leak. Use only propane gas set up for vapor withdraw. Store or use propane gas in compliance with local ordinances and codes or with ANSI/NFPA 58. Turn off propane when not in use.
- 6 For Outdoor Use Only:
CARBON MONOXIDE HAZARD
This appliance can produce carbon monoxide which has no odor. Using it in an enclosed space can kill you. Never use this appliance in an enclosed space such as a camper, tent or home.
- 7 California Proposition 65
Combustion by-products produced when using this product contain chemicals known to the state of California to cause cancer, birth defects, and other reproductive harm.
- 8 BURN HAZARD
 - Never leave fire pit unattended while in use.
 - Keep out of reach of children.
- 9 The installation must conform with local codes, or in the absence of local codes with the National Fuel Gas Code, ANSI Z223.1 NFPA 54; National Fuel Gas Code; Natural Gas and Propane Installation Code, CSA B149. 1; or Propane Storage and Handling Code, CSA B149. 2, as applicable
- 10 Solid fuels(plastic and artificial wood decks etc.) shall not be burned in this appliance.
- 11 Max.gas supply: 250 PSI; Min gas supply for input adj. 25 PSI.
- 12 Keep the appliance area clear and free from combustible materials,gasoline, and other flammable vapors and liquids;
- 13 Please clean the combustion tube before the using.
- 14 Must inspect the hose before each use of the appliance.
If there is evidence of excessive abrasion or wear, or if the hose is damaged, shall state that the replacement hose assembly shall be that specified by the manufacturer, Please contact the manufacturer.

Safety precautions








⚠ WARNING

- 15 The burner must be replaced prior to the appliance being put into operation if it is evident that the burner is damaged, and the replacement burner shall be that specified by the manufacturer;
- 16 Please install the battery base on the instructions, If not you cannot ignite the flame and use the burner
- 17 The propane gas supply cylinder to be used must be:
 - constructed and marked in accordance with the U.S. Department of Transportation(D.O.T.) Specifications for LP-Gas Cylinders, or the Standard for Cylinders, Spheres and Tubes for Transportation of Dangerous Goods and Commission, CAN/CSA-B339, as applicable;
 - provided with a listed overfilling prevention device;
 - provided with a cylinder connection device compatible with the connection for the appliance.
- 18
 - Alert children and adults to the hazards of high surface temperatures, Stay away from these surfaces to avoid burning skin or igniting clothing.
 - Carefully supervise young children when in the vicinity of the fire pit.
 - Do not hang clothing or any other flammable materials from the fire pit, or place on or near the fire pit.
 - Replace any guard or protective device removed for servicing the appliance prior to placing back in service.
 - Installation and repair should be done by a qualified service person. The fire pit should be inspected before use and annually by a qualified service person. More frequent cleaning may be required as necessary. It is imperative that the control compartment, burners, and circulating air passageway of the appliance be kept clean.
- 19 Do not use this appliance if any part has been under water. Immediately call a qualified service technician to inspect the appliance and to replace any part of the control system and any gas control that has been under water;
- 20 **WARNING:** Failure to position the parts in accordance with these diagrams or failure to use only parts specifically approved with this appliance may result in property damage or personal injury.
- 21 **SERVICE SAFETY**
 - Keep all connections and fittings clean. Make sure propane cylinder valve outlet is clean.
 - During set up, check all connections and fittings for leaks using soapy water. Never use a flameUse as a heating appliance only. Never alter in any way or use with any device.
CAUTION indicates an imminently hazardous situation which, if not avoided, may result in minor or moderate personal injury, or property damage.

Warranty Coverage Requirements:

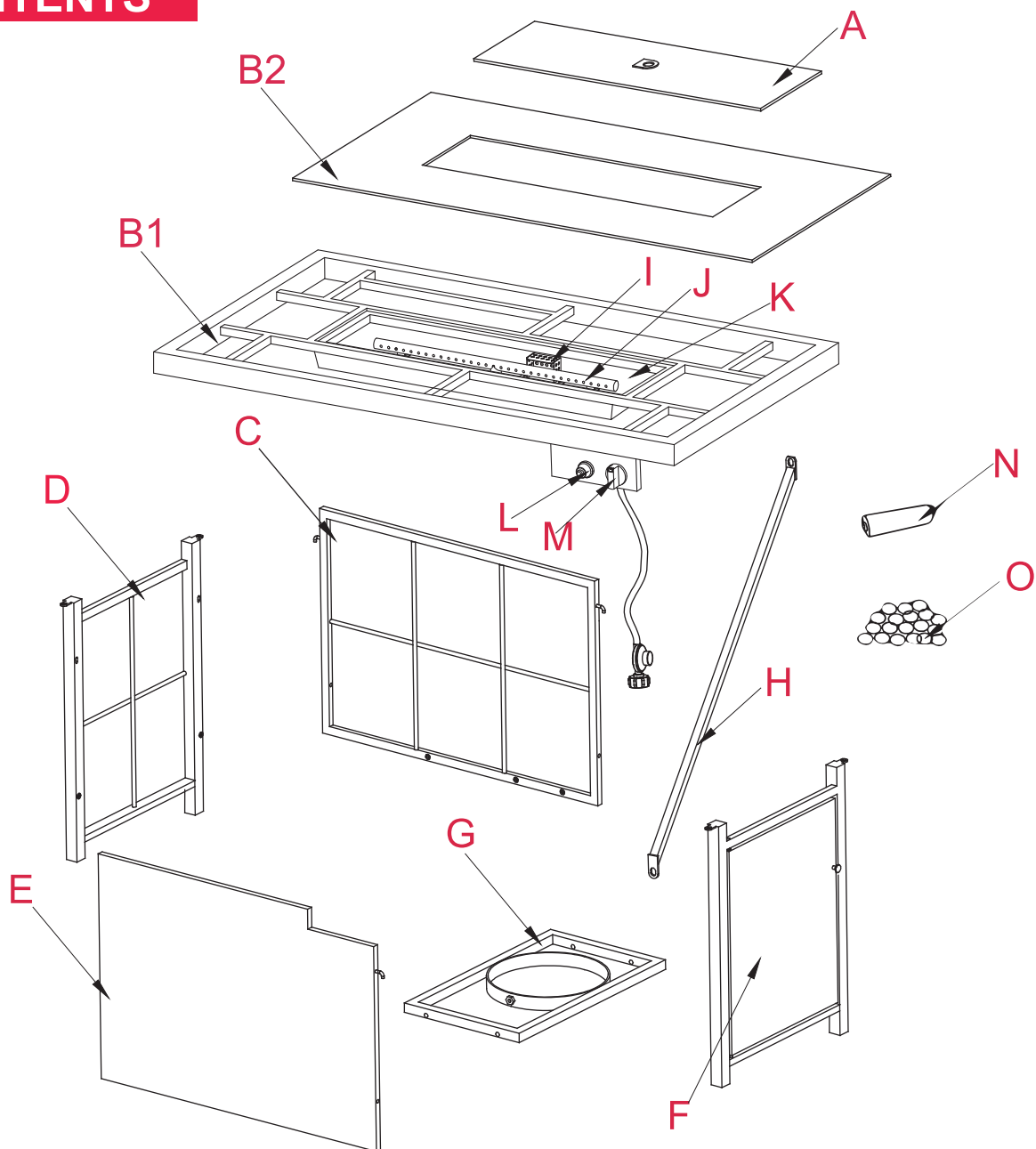
- Pictures of the damaged parts.
- The name or MODEL number of your product.
- Please gather all of this information BEFORE you contact us.
- Do not use this item in a way inconsistent with the manufacturer's instructions as this could void the product warranty.

HARDWARE

a1	Bolt (M6*40)  4/PC	a2	Bolt (M6*30)  4/PC	a3	Bolt (M6*20)  4/PC
a4	Bolt (M6*15)  2/PC Wrench	a5	Steel Washer  14/PC	a6	Bolt cap  14/PC
a7	 1/PC				

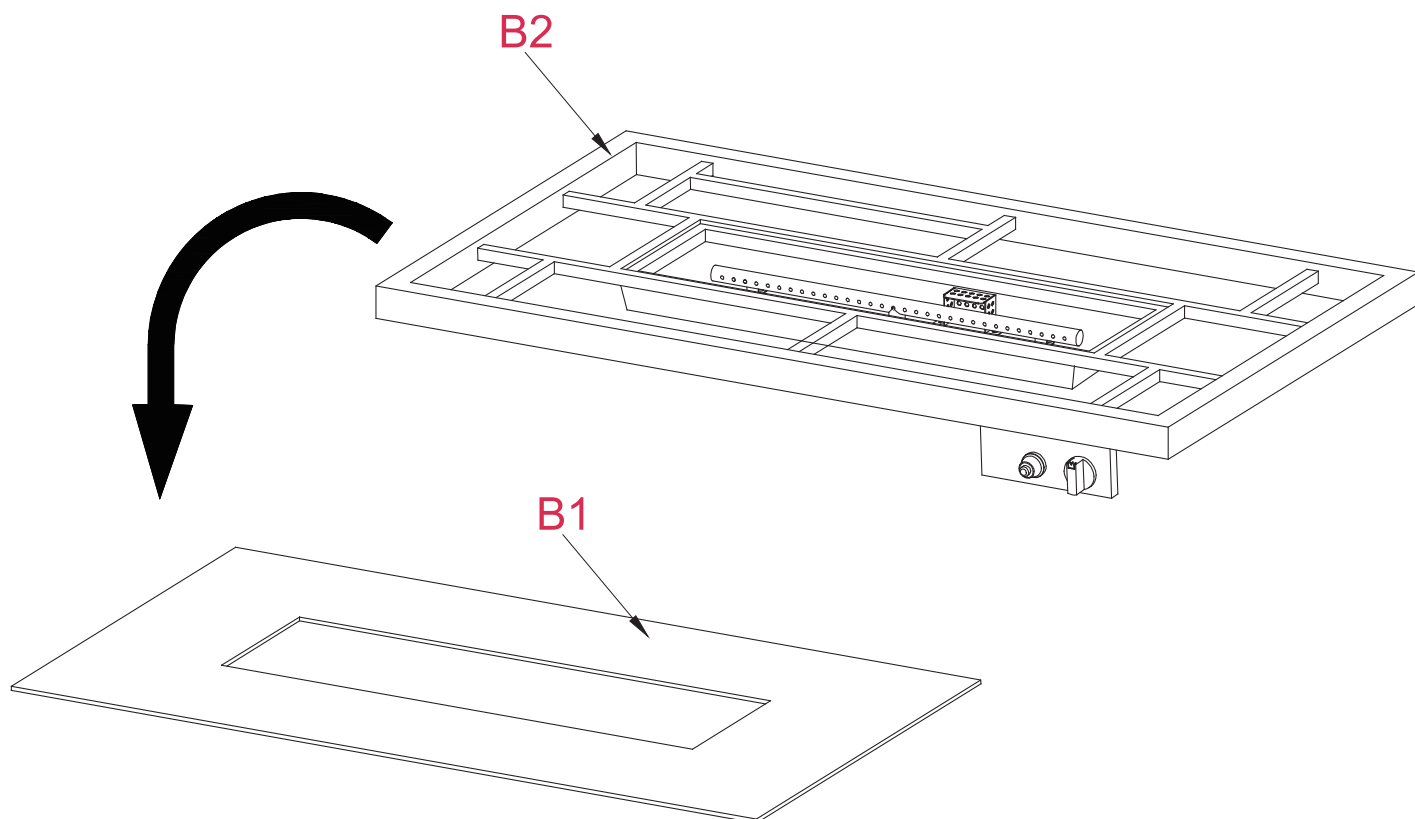
Before beginning assembly of this product be sure all parts are present. Compare parts with package contents list and hardware contents list. If any part appears to be missing or damaged do not begin assembly of this product and call customer service immediately.

CONTENTS



Item	Description	Qty	Item	Description	Qty
A	Glass Cover Panel	1	J	Burner(preassembled)	1
B1	Table Top Frame	1	K	Fire Bowl (preassembled)	1
B2	Table Top Glass	1	L	Electronic Igniter (preassembled)	1
C	Right Side Panel	1	M	Control Knob (preassembled)	1
D	Back Side Panel	1	N	"AAA" Battery	1
E	Left Side Panel	1	O	Lava Glass	1Box
F	Door Panel	1			
G	Metal Stand	1			
H	Support Frame	1			
I	Guard (preassembled)	1			

! WARNING

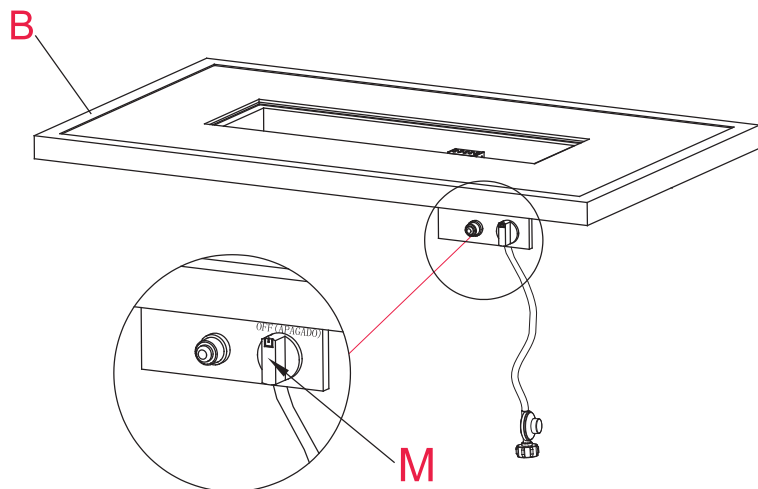


ATTENTION:

Please remove the glass when you turn the table top upside down, to keep the glass from breaking.

Step1

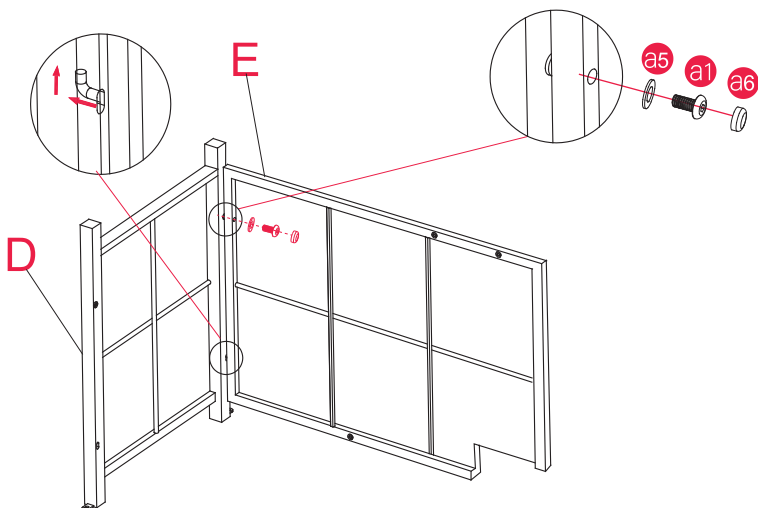
Check that the control knob (M) for the gas supply system is turned to the " OFF " position before starting any assembly.



Step2

1.Insert the left side panel (E) to the back side panel (D).

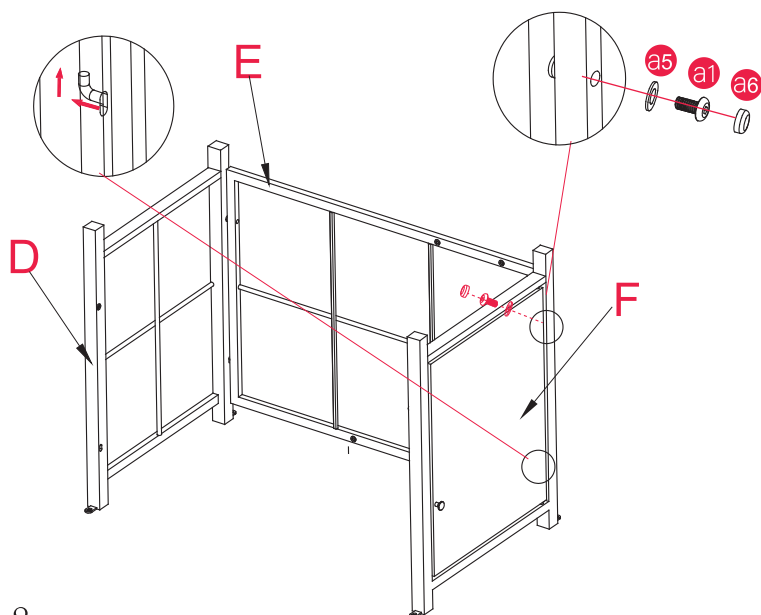
2.Attach the left side panel (E) to the back side panel (D) using one M6X40 screw (a1), one washer (a5), one screw cap (a6).



Step3

1.Insert the left side panel (E) to the door panel (F).

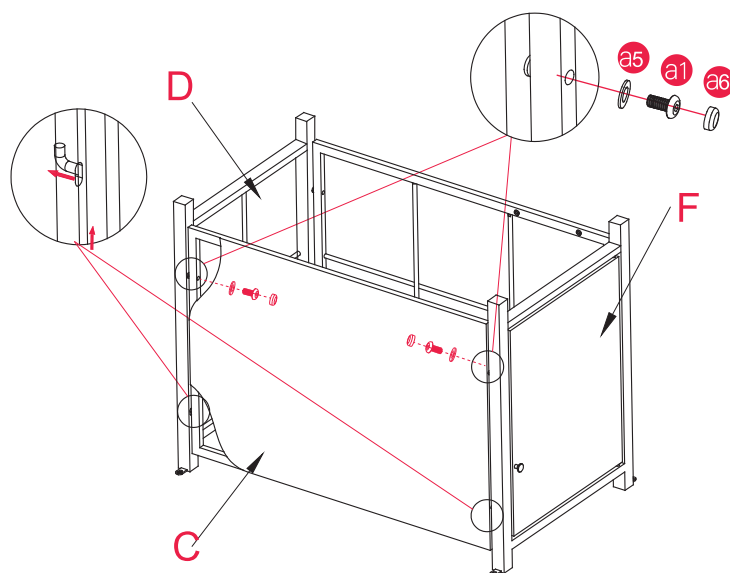
2.Attach the left side panel (E) to the door panel (F), using one M6X40 screw (a1), one washer (a5), one screw cap (a6).



Step4

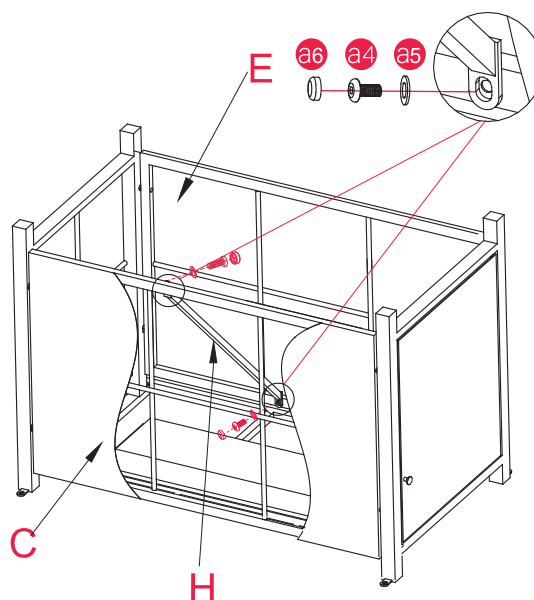
1. Insert the right side panel (C) to the back side panel (D) and door panel (F).

2. Attach the right side panel (C) to the back side panel (D) and door panel (F) using two M6X40 screws (a1), two washers (a5), two screw caps (a6).



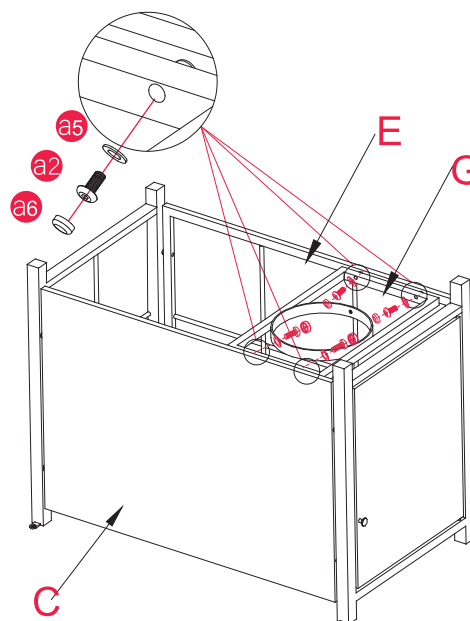
Step5

Attach the support frame (H) to the right side panel (C) and left side panel (E) using two M6X15 screws (a4) two washers (a5), two screw caps (a6).



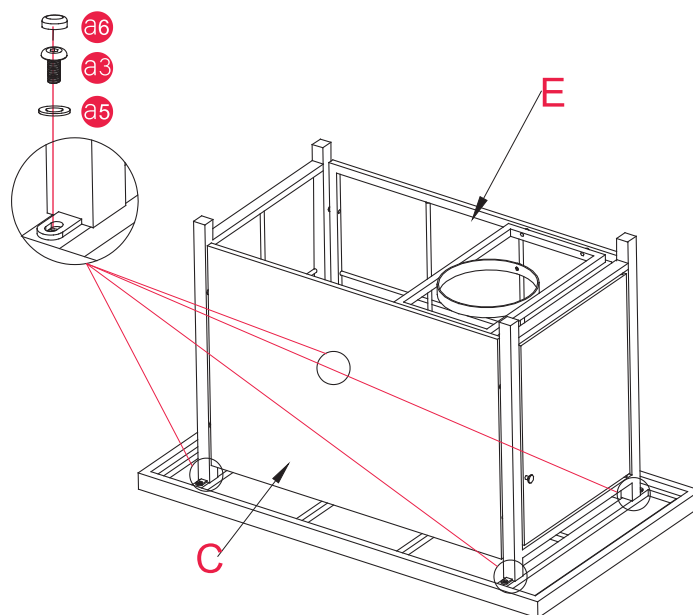
Step6

Attach the metal stand (G) to the right side panel (C) and left side panel (E) using four M6X30 screws (a2), four washers (a5), four screw caps (a6).



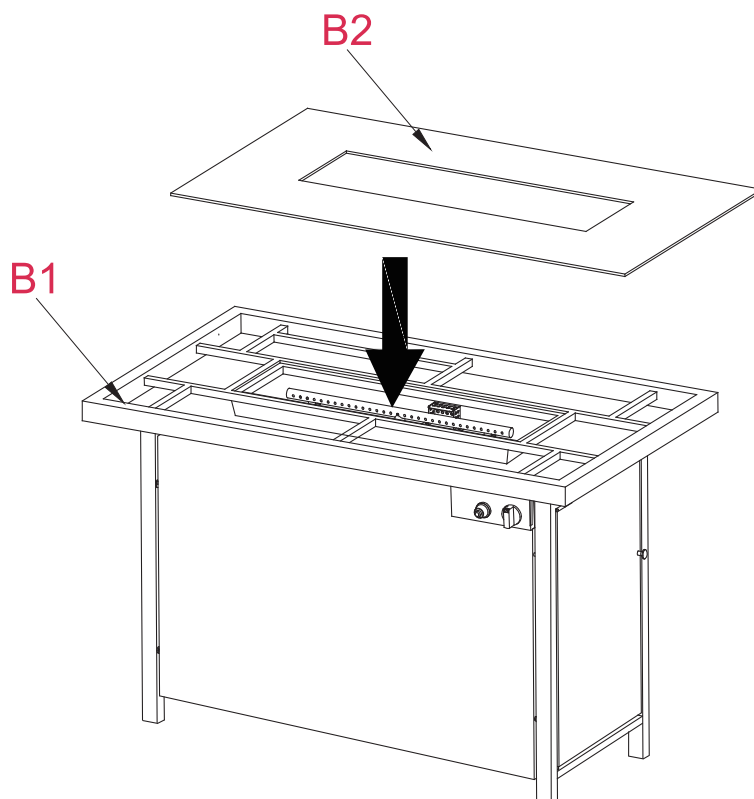
Step7

Attach the back side panel (D) and door panel (F) to the table top (B), using four M6X20 screws (a3), four washers (a5), four screw caps (a6).



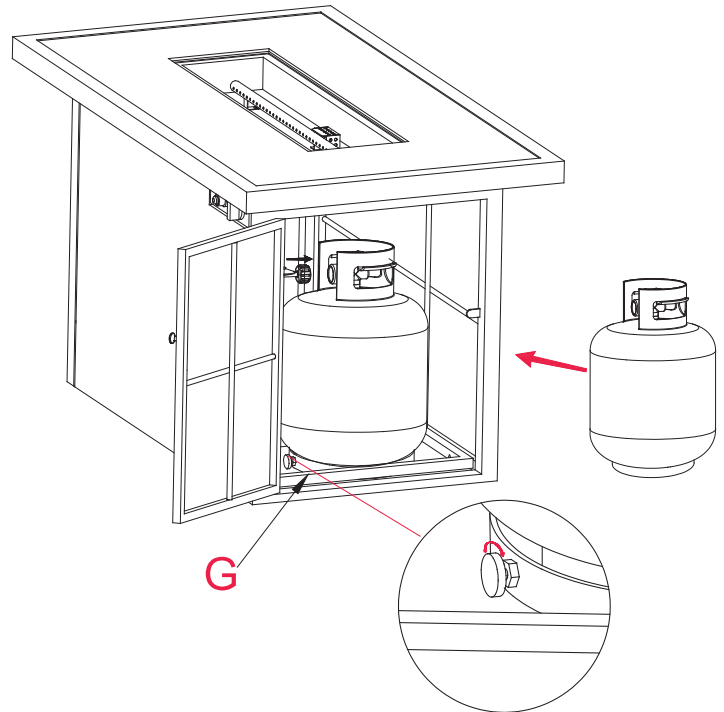
Step8

Put the table top glass (B2) into the table top frame (B1).

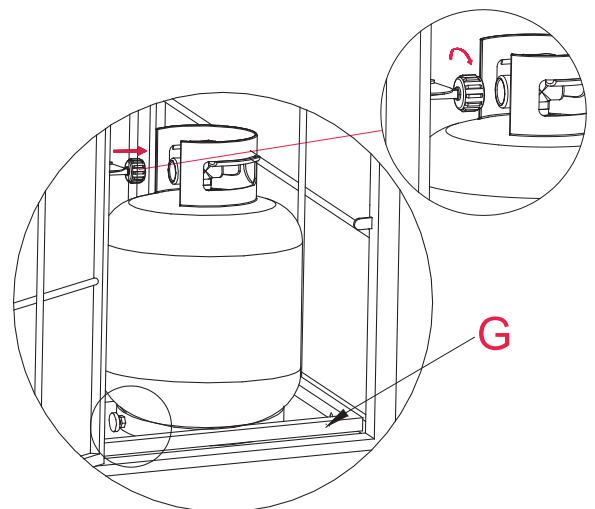


■ Step9

Place propane gas tank (not included) into the metal stand (G). Make sure the gas tank sits on the metal stand (G) completely. Turn the preassembled wing screw on the outer part of metal stand (G) clockwise to secure the propane gas tank tightly.

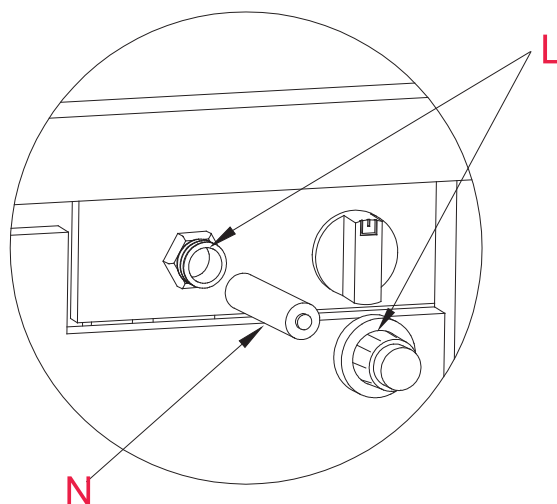
**■ Step10**

Connect the pressure regulator to the cylinder by rotating the knob clockwise until it is fully secured. Make sure there is no leakage or damage



Step11

Remove the rubber cap on the electronic igniter (L) by unscrewing and slide battery (N) into the battery slot. Make sure the positive side of the battery faces outwards. Screw the electronic igniter cap (L) over the battery tightly.



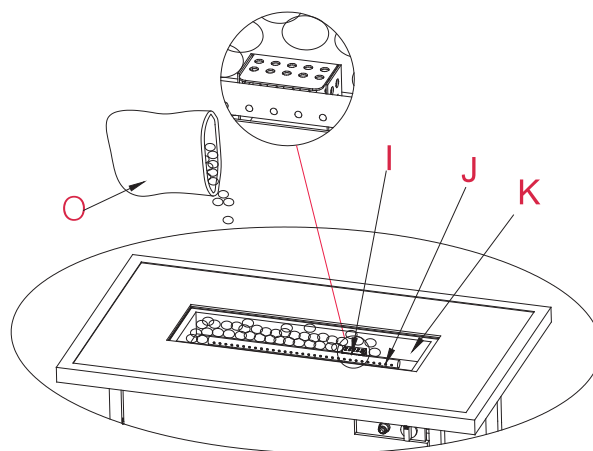
Step12

Pour the box of lava glass (O) into the firebowl (K).

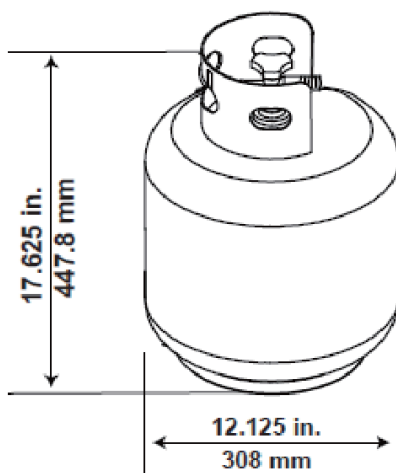


CAUTION

To ensure proper function, the guard (I) on this burner (J) should be free of lava rocks at all time .



Please use 20LBS propane gas tank



Operation

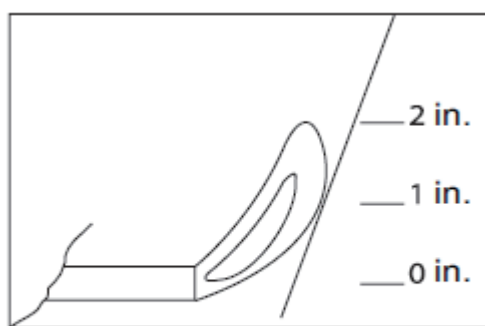
Before performing leak test, be sure that no sparks can occur and you are in a spacious outdoor area. Connect the propane gas tank to the regulator and turn the valve on the unit to the "OFF" Position. Brush a soap and water mixture on all connections. Turn the gas supply on; if bubbles occur on any connection there may be a leak. If you smell gas or a leak is discovered turn the gas valve off, disconnect propane gas tank and do not use the appliance until the leak is repaired.

Do not use the heating unit without inspecting the gas hose. If there are signs of wear or abrasion you must replace the hose (if applicable). Lava Glass could pop up and strike somebody's face during the process of lighting this unit; stand away from the unit for the first 20 minutes after igniting. Flame height should be a yellow/blue color between 2-10 inches in height

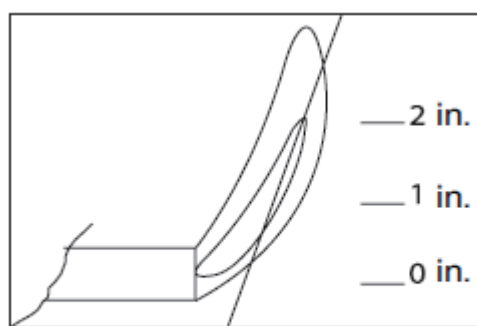
Wait 5 minutes after extinguishing flame prior to placing a lid (if applicable) or protective cover on heating item.

To Light

1. Make sure the control knob is in the "OFF" position.
2. Open the door (F) Slowly open the valve on the propane gas tank by turning the knob counterclockwise.
3. Close the door (F)
4. Push and hold in the electronic igniter (L) to create sparks within the electrode, continue to hold.
5. Push in the control knob (M) and turn to the "D". Keep holding down the control knob (M) to allow gas to flow for 15 seconds.
6. If ignition doesn't occur within a few seconds release the control knob (M) and rotate to the "OFF" position. Wait for 5 minutes for gas to clear and then repeat the above lighting instructions.
7. Once the fire product is lit, the flame intensity may be controlled by turning the control (M) knob between the "D" and "D" position.



Normal

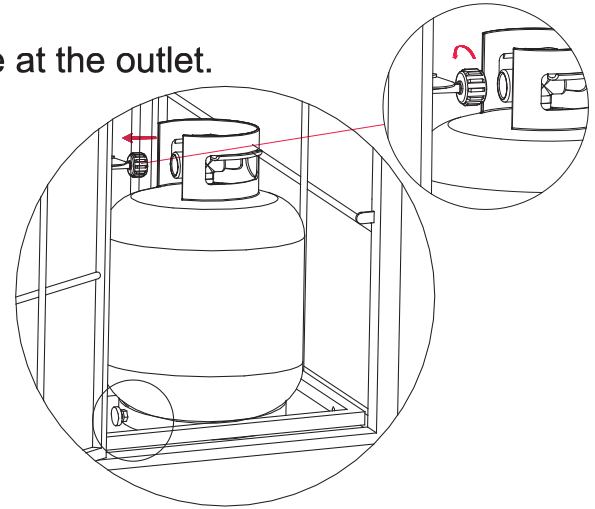


Abnormal

Operation

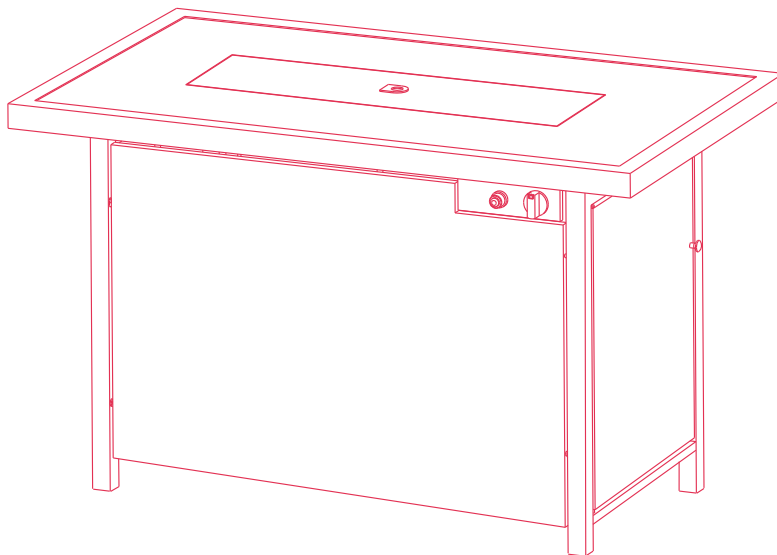
To Extinguish

1. Push in gas control knob slightly and turn to "OFF".
2. Turn the knob counterclockwise to detach the pressure regulator from the cylinder.
3. You can use soap warter to check if there is gas leakage at the outlet.



Maintenance

- Before performing any maintenance always disconnect propane gas tank.
- Keep the heating item free and clear from combustible materials.
- Visually inspect burner for obstructions and keep tank enclosure free and clear from debris.
- Use a soft brush to get rid of the mild stains, loose dirt and soil after the burner and pumice stones/lava rocks/Lava Glass TM are completely cooled down. Wipe down with a soft cloth.
- Harsh weather conditions may cause stubborn stains, discoloration and possibly rust pitting.
- Permanent damage may occur if powder or solvent comes in contact with painted or plastic components on this heating unit.
- Keep the heating unit stored away from direct sunlight.
- If storing this unit inside, disconnect the propane gas tank from the gas valve
- Not using manufacturer approved or supplied parts/accessories may result in a defective condition and void the warranty of this heating unit.
- Always place lid (if applicable) or protective cover on heating item when not in use.



If you have any questions,
please contact customer service:
E-mail: Pamapic@hotmail.com.
Facebook: [@Pamapic.Official](https://www.facebook.com/Pamapic.Official)

