



# Instruction Manual

Item# LO-3604-DBN



## Having Trouble?

Chat with us on your phone

Simply point your phone camera towards  
the QR code or see our website



**xbrand.us**

or email at

**customerservice@ecintel.com**

**Monday - Friday 7:00AM - 3:30PM PST**

## Classic Birdbath LED Fountain



### Purchased your product online?

We would really appreciate it if you can share your experience  
with others by reviewing our product on the website  
from which you purchased.



### Have Questions or Issues? Need help with assembly?

Contact us and we will resolve immediately.

Simply point your phone camera towards the QR code or see our website

**Support Hours M-F 7:00AM - 3:30PM (U.S Pacific Time)**



Chat with us:  
**xbrand.us**



Email:  
**customerservice@ecintel.com**



Call:  
**951-319-4433**

## Warranty

### Limited 1-Year Manufacturer Warranty on xbrand.us

#### Manufacturer warranty covers:

- Parts that are deemed defective within 30 days will be shipped free of charge, within the 48 contiguous states.
- Any warranty claim after 30 days, will require shipping to be paid by the customer.

Any visible damage due to the neglect, misuse, or abuse will void the limited warranty of the product.

For further information, please contact us:

Chat with us: [xbrand.us](https://xbrand.us)



Simply point your phone camera towards the QR code or see our website

Email: [customerservice@ecintel.com](mailto:customerservice@ecintel.com)

#### Purchased your product online?

We would really appreciate it if you can share your experience with others by reviewing our product on the website from which you purchased.



Please use your smart phone camera to scan the QR code.  
Simply point your camera and let the camera scan the  
code below, and click on the link that opens up.



<https://xbrand.us/product/LO-3604-DBN>

<b>Contents .....</b>	<b>2</b>
<b>What is included .....</b>	<b>3</b>
<b>Assembly instructions .....</b>	<b>4</b>
<b>YouTube video instruction .....</b>	<b>5</b>
<b>Warranty .....</b>	<b>6</b>

## What is included



A. Pedestal Base



B. Auto-Shut off Pump



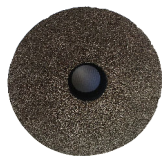
C. Cap



D. LED light and Spray head



E. Hose

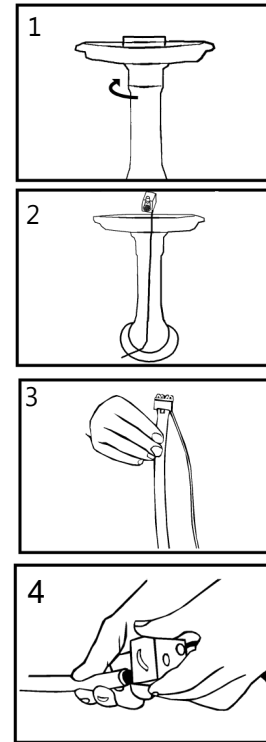


F. Pedestal Bowl Top



G. Pedestal Bowl

## Assembly instructions



1. Rotate to securely join the pedestal bowl and pedestal base.
  2. Guide the pump's long connection through the fountain pipe, securing it with the connector.
  3. Attach the hose to the LED light and place the LED light on the pedestal bowl top. You may insert the spray head on top of the LED light, if preferred.
  4. Unite the cords of the LED and pump, then connect the long pump cord to the adapter and fill the fountain with water.
- Make sure the pump is fully submerged in water. The LED lights can be turned off if preferred. Just disconnect them from the pump and cap the connections.



**Scan the QR code for  
detailed instructions**

<https://xbrand.us/product/LO-3604-DBN>