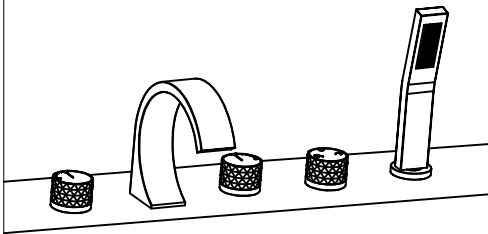


Bathtub faucet



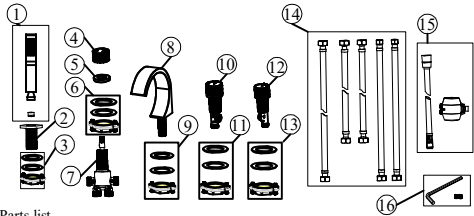
Model:KCLT0068

Before installation

1. Check the packaging and make sure all parts are included. If any parts are missing or damaged, please contact us.
2. The product has been strictly tested by the manufacturer, and there is no need to disassemble the internal structure.
3. Turn off the main water supply system before starting the installation.
4. Be sure to flush the water supply pipe before installation to remove any dirt and debris (important).
5. Ensure that the hot and cold water inlet pipes are properly connected. If standing in front, connect the hot water pipe on the left and the cold water pipe on the right.
6. After installation, check for leaks and make sure each joint is securely sealed.

Cleaning and maintenance

1. Rinse with clean water and wipe dry with a soft cloth.
2. Do not use corrosive cleaning products, so as not to damage the chrome plating layer, product warranty is not effective.
3. Don't use cloths with rough surfaces .



Parts list

NO	PART NAME	NO	PART NAME	NO	PART NAME	NO	PART NAME
1	Handheld shower	5	Fastening decorative ring	9	Fastening parts	13	Fastening parts
2	Cover & Connector	6	Fastening parts	10	Hot water switch	14	Water supply hoses
3	Fastening parts	7	Switching valve accessories	11	Fastening parts	15	Shower hose & Drop ball
4	Switch knob	8	Water outlet	12	Cold water switch	16	Hexagon wrench

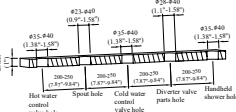
Customer Service

Email:contactus24service@gmail.com
Phone:(951)213-4742

Tools will be needed:

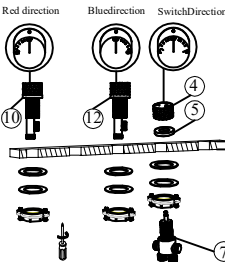


Recommended opening holes size:(unit:mm/inch)

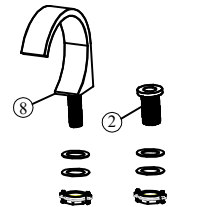


1.Drill the holes are as recommended size above.

2. Use allen key to loose the screw in knob,then disconned knob cover,rubber washer, diverter valve part as picture shows.



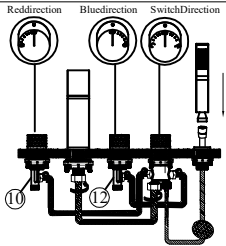
3. Pass the three parts above through bathtub hole as picture shows,reinstall the rubber washer and knob cover,then tighten the parts and the screw in the knob.



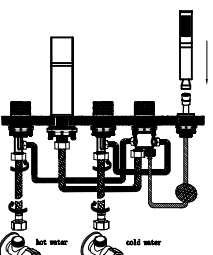
4. Disassemble the water nozzle, shower head seat nut and gasket.

5.Fix and lock the water nozzle and shower seat

6.The hand shower is connected to the shower tube. The other end of the shower tube passes through the shower seat and is connected to the outlet marked with the hand shower tube in the water distribution valve body.



7.Connect the other outlet end and outlet nozzle of the water distribution valve body with a connecting pipe. The outlet end of the hot water inlet valve body is connected with the inlet end with B in the water distribution valve body. The outlet end of the cold water inlet valve body is connected with the inlet end with C in the water distribution valve body.



8. Connect the inlet end of the hot water intake valve body with the outlet end of the hot water, and connect the inlet end of the cold water valve body with the outlet end of the cold water.