


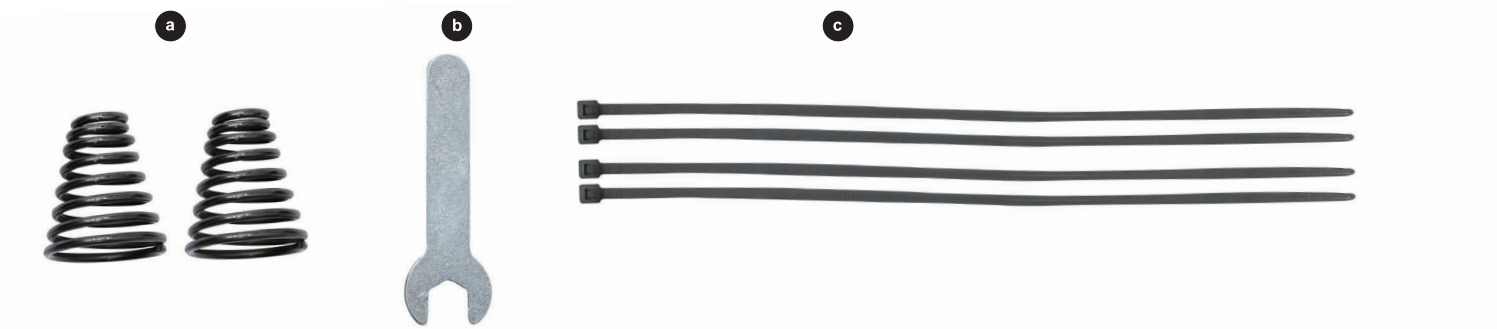
HAUNTED LIVING and logo design are trademarks or registered trademarks of LF, LLC. All rights reserved.

 **Questions, problems, missing parts?** Before returning to your retailer, call our customer service department at 888-251-1006, 8 a.m. - 8 p.m., EST, Monday - Sunday. You could also contact us at [partsplus@lowes.com](mailto:partsplus@lowes.com).



SS23348

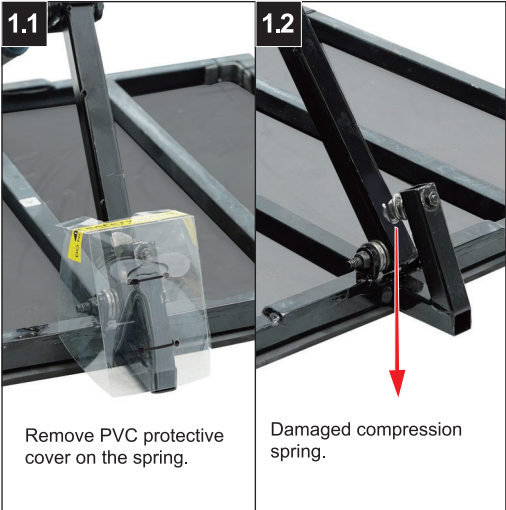
PACKAGE CONTENTS



PART	DESCRIPTION	QUANTITY
a	Compression Spring	2
b	M6 Wrench	1
c	Zip Lock Ties	4

ASSEMBLY INSTRUCTIONS

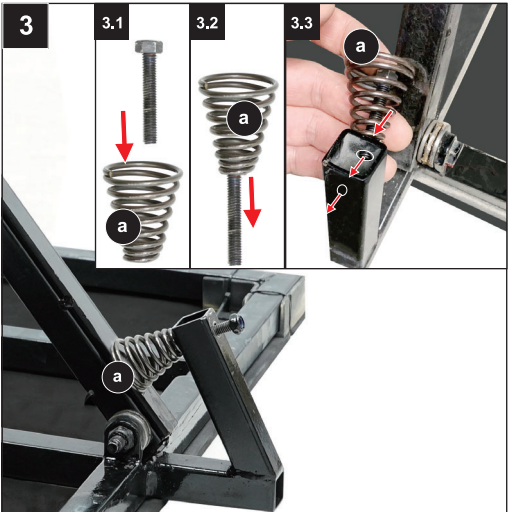
1. To access and replace the damaged (a) Compression Spring, first remove safely the PVC plate that is covering the (a) Compression Spring assembly, by cutting the 2 (c) Zip Lock ties as shown in Figure 1.1. Set aside the PVC cover.



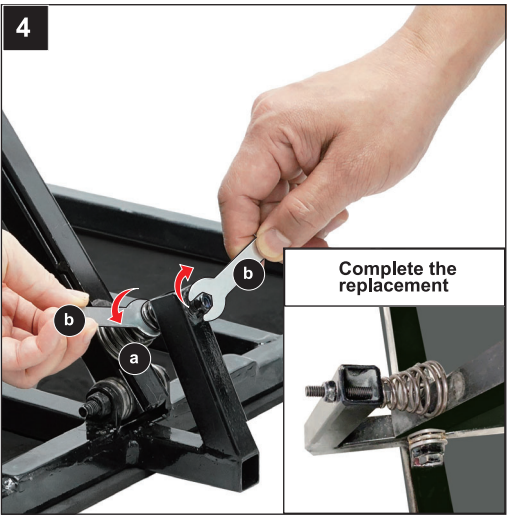
2. Remove the damaged (a) Compression Spring, by unscrewing the bolt and nut as shown in Figure 2.



3. Take one of the spare (a) Compression Spring and insert the bolt through it as shown in Figure 3.1. Assembled bolt and (a) Compression Spring looks like Figure 3.2. Insert through the assembled (a) Compression Spring and bolt to the screw hole as shown in Figure 3.3.



4. Using 2 (b) M6 Wrenches, tighten the screw by holding the head of the bolt with one for the wrenches, and the other wrench holding the nut on the opposite side, as shown in Figure 4. Ensure that the (a) Compression Spring is securely placed by making sure that the bolt and nut is tightly screwed.



5. Complete the replacement procedure by placing the PVC cover back to its original place and secure by using 2 (c) Zip Lock Ties to lock it in place as shown in Figure 5.

