

Thank you for purchasing the 6200 carbon monoxide (CO) alarm. This CO alarm uses advanced electrochemical sensor, and with LCD digital display for CO concentration.

THIS EQUIPMENT SHOULD BE INSTALLED IN ACCORDANCE WITH THE NATIONAL FIRE PROTECTION ASSOCIATION'S STANDARD 72 (National Fire Protection Association, Batterymarch Park, Quincy, MA 02269).

Typical installation drawing layouts for the device(s) indicating recommended locations and wiring methods which shall be in accordance with the applicable requirements outlined in the following: C22.1-12, Canadian Electrical Code, Part I, Safety Standard for Electrical Installations; The National Fire Protection Association (NFPA) and the manufacturer recommend replacing this alarm ten years from the date code on back of alarm. This instruction manual contains important information on starting operation and using the device.

Please take a few minutes to thoroughly read the instruction manual and familiarize yourself and your family with its operation. And save it for future reference.

⚠ ATTENTION! -Please take a few minutes to thoroughly read the instruction manual and familiarize yourself and your family with its operation. And save it for future reference.

Note: Many times throughout this instruction manual, we will refer to Carbon Monoxide as "CO".

Table of Contents	
1. What to do if the CO alarm sounds	1
2. Product important information	2
3. Installation instructions.....	2-3
4. Understanding your CO alarm	3-6
5. General maintenance	6
6. Carbon monoxide overview	6-7
7. Power information	7
8. Product specifications	7
9. Recognizing nuisance alarms	7
10. Manufacturer and customer service information	8
11. Warranty information	8
12. Warranty card	8

1. What to Do if the CO Alarm Sounds

The alarm signal pattern is 4 short beeps followed by 5 seconds of silence, repeat. The ALARM indicator (red) will flash the same pattern.

⚠ WARNING! -ACTUATION OF YOUR CO ALARM INDICATES THE PRESENCE OF CARBON MONOXIDE (CO) WHICH CAN KILL YOU.

⚠ WARNING! -ACTUATION OF THIS DEVICE INDICATES THE PRESENCE OF DANGEROUS LEVELS OF CO! CO CAN BE FATAL!

IF ALARM SIGNAL SOUNDS (FOUR BEEPS) :

- 1. OPERATE TEST/SILENCE BUTTON;**
- 2. CALL YOUR EMERGENCY SERVICES [FIRE DEPARTMENT OR 911] ;**

EMERGENCY PHONE #

3. IMMEDIATELY MOVE TO FRESH AIR-OUTDOORS OR BY AN OPEN DOOR/WINDOW. DO A HEAD COUNT TO CHECK THAT ALL PERSONS ARE ACCOUNTED FOR. DO NOT REENTER THE PREMISES NOR MOVE AWAY FROM THE OPEN DOOR/WINDOW UNTIL THE EMERGENCY SERVICES RESPONDERS HAVE ARRIVED, THE PREMISES HAVE BEEN AIRED OUT, AND YOUR ALARM REMAINS IN ITS NORMAL CONDITION.

4. AFTER FOLLOWING STEPS 1-3, IF YOUR ALARM REACTIVATES WITHIN A 24 HOUR PERIOD, REPEAT STEPS 1-3 AND CALL A QUALIFIED APPLIANCE TECHNICIAN. TO INVESTIGATE FOR SOURCES OF CO FROM FUEL BURNING EQUIPMENT AND APPLIANCES, AND INSPECT FOR PROPER OPERATION OF THIS EQUIPMENT.

TELEPHONE #

IF PROBLEMS ARE IDENTIFIED DURING THIS INSPECTION HAVE THE EQUIPMENT SERVICED IMMEDIATELY. NOTE ANY COMBUSTION EQUIPMENT NOT INSPECTED BY THE TECHNICIAN AND CONSULT THE MANUFACTURERS* INSTRUCTIONS, OR CONTACT THE MANUFACTURERS DIRECTLY, FOR MORE INFORMATION ABOUT CO

SAFETY AND THIS EQUIPMENT. MAKE SURE THAT MOTOR VEHICLES ARE NOT, AND HAVE NOT BEEN, OPERATING IN AN ATTACHED GARAGE OR ADJACENT TO THE RESIDENCE.

NOTE: See Section RECOGNIZING NUISANCE ALARMS, for nuisance alarm situations.

2. Product Important Information

- ⚠ CAUTION!** - This CO alarm was designed to detect carbon monoxide from any source of combustion in a residential environment. It is not designed for use in recreational vehicle (RV) or boat.
- ⚠ CAUTION!** - This CO alarm was designed for indoor use only. Do not expose to rain or moisture. Do not knock or drop the detector. Do not open or tamper with the alarm as this could cause malfunction.
- ⚠ CAUTION!** - This CO alarm will not protect against the risk of carbon monoxide poisoning when the battery has drained.
- ⚠ CAUTION!** - Installation of the alarm should not be used as a substitute for proper installation, use and maintenance of fuel burning appliances including appropriate ventilation and exhaust systems.
- ⚠ CAUTION!** - This CO alarm should be installed by a competent person.
- ⚠ CAUTION!** - This CO alarm is not intended to alert hearing impaired individuals.
- ⚠ WARNING!** - Do NOT try to repair the CO alarm, it has the risk of electric shock or malfunction if the CO alarm is tampered with.
- ⚠ WARNING!** - Individuals with medical problems may consider using warning devices which provide audible and visual signals for carbon monoxide concentrations under 30 ppm. This CO alarm has not been investigated for carbon monoxide detection below 70 PPM.
- ⚠ WARNING!** - THIS CO ALARM WILL ONLY INDICATE THE PRESENCE OF CARBON MONOXIDE GAS AT THE SENSOR. CARBON MONOXIDE GAS MIGHT BE PRESENT IN OTHER AREAS.
- ⚠ WARNING!** - THIS CO ALARM IS DESIGNED TO PROTECT INDIVIDUALS FROM THE ACUTE EFFECTS OF CARBON MONOXIDE EXPOSURE. IT WILL NOT FULLY SAFEGUARD INDIVIDUALS WITH SPECIFIC MEDICAL CONDITIONS. IF IN DOUBT CONSULT A MEDICAL PRACTITIONER.
- ⚠ WARNING!** - THIS CO ALARM IS INTENDED FOR USE IN ORDINARY INDOOR RESIDENTIAL AREAS. IT IS NOT DESIGNED TO MEASURE COMPLIANCE WITH COMMERCIAL AND INDUSTRIAL STANDARDS.
- ⚠ WARNING!** - THIS CO ALARM IS DESIGNED TO DETECT CARBON MONOXIDE GAS FROM ANY SOURCE OF COMBUSTION, IT IS NOT DESIGNED TO SMOKE, FIRE, OR ANY OTHER GASES.

- The TEST/SILENCE button accurately tests the CO alarm functions. Do not use any other test method. Test the CO alarm weekly to ensure proper operation. Do not install in non-residential buildings. And the CO alarm is not a substitute for a complete alarm system.
- If you're sure it isn't a real alarm warning, open windows or fan the air around the CO alarm to silence it.
- Observe and follow all local and national electrical and building codes for installation.
- This CO alarm is designed to be used inside a single family only. In multifamily buildings, each individual living unit should have its own CO alarm. Do not install in non-residential.
- Install a CO alarm in every room and on every level of the home. CO may not reach the CO alarm for many reasons. For example, if a CO starts in a remote part of the home, on another level, in a chimney, wall, roof, or on the other side of a closed door, CO may not reach the device in time to alert household members. This CO alarm will not promptly detect the CO dangerous except in the area or room in which it is installed.
- This CO alarm may not alert every household member every time. The alarm horn is loud in order to alert individuals to a potential danger. However, there may be some circumstances where a household member may not hear the alarm (i.e. outdoor or indoor noise, sound sleepers, drug or alcohol usage, the hard of hearing, etc.). If you suspect that this device may not alert a household member, you should install and maintain other specialty CO alarm devices. Household member must hear the alarm's warning sound and quickly respond to it to reduce the risk of damage, injury, or death that may result from CO, if a household member is hard of hearing, install other special CO alarm with lights or vibrating devices to alert occupants.
- This CO alarm can only sound their alarms when they detect dangerous level of CO in the air. They do not sense smoke, heat, flame, or other gas. The CO alarm is designed to give audible warning of CO dangerous.
- This CO alarm have limitations. The CO alarm is not foolproof are not a substitute for insurance. Homeowners and renters should insure their lives and property. In addition, it is possible for the device to fail at any time. For this reason, you must test the device weekly and replace device every 10 years.

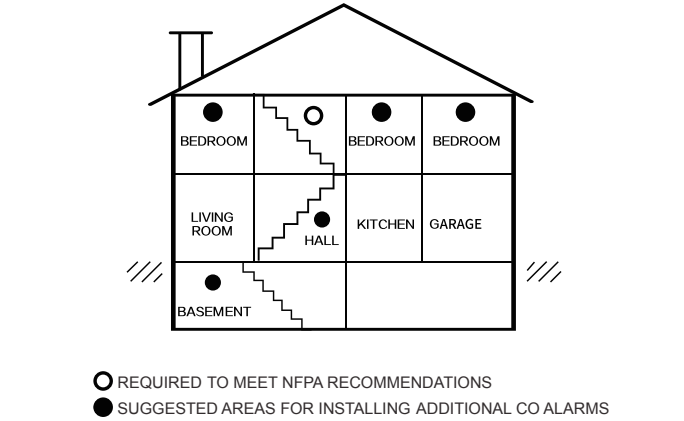
3. Installation Instructions

3.1 Recommended location for alarms

The following suggestions are intended to help you with the placement and installation of your CO alarm.

- Place out of the reach of children. Under no circumstance should children be allowed to handle the CO alarm.
- Install in a bedroom or hallway located close to the sleeping area. Take special care to verify the alarm can be heard in sleeping areas.
- It is recommended that a CO alarm be installed on each level of a multilevel home.
- Do not install within 5 ft. of heating or cooking appliances. (recommends 15 ft. to prevent nuisance alarms).
- Placing at eye level allows for optimum monitoring of the red and green indicator lights.
- Insure that all vents of the CO alarm are unobstructed.
- Do not install in dead air spaces such as peaks of vaulted ceilings, or gabled roofs.
- Do not install in turbulent air from ceiling fans.
- Do not place near fresh air vents or close to doors and windows that open to the outside.
- Keep the CO alarm away from excessively dusty, dirty, or greasy areas. Dust, grease and household chemicals can affect the sensor.

- Keep out of damp and humid areas such as the bath room. Avoid spraying aerosols near the CO alarm.
- Do not install in areas where the temperature is below 40°F(4.4°C) or hotter than 100°F (37.8°C).
- Do not place behind curtains or furniture. CO must be able to reach the sensor for the CO alarm to accurately detect CO.
- Do not place near metal objects.



3.2 Installation instructions

- ⚠ CAUTION!** -This CO alarm should be installed by a competent person.
- ⚠ WARNING!** - This CO alarm should be located in an open and unobstructed area and shall not be located behind furniture, drapes, or any other object where it might not be seen or heard. The alarm shall be heard from all sleeping areas.
- ⚠ WARNING!** - Alarm users should add the phone numbers of their emergency service providers and qualified technicians on the two self-adhesive labels provided by the alarm manufacturer. Users should place one label next to the CO alarm and another near the source of fresh air they plan to gather. When the alarm indicates the presence of carbon monoxide, the user can escape as planned.

When choosing your installation locations, make sure you can hear the alarm from all sleeping areas. If you install only one device in your home, install the CO alarm near bedrooms, not in the basement or furnace room.

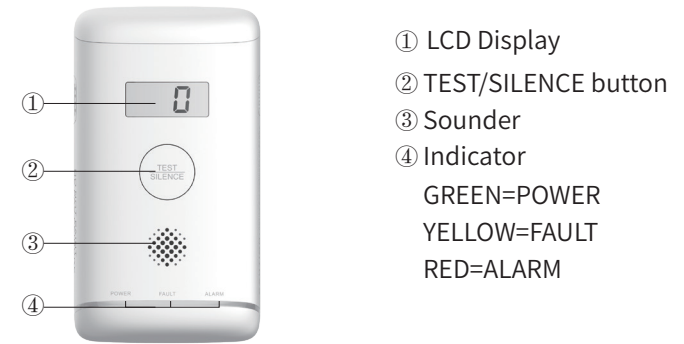
- Place the batteries correctly in the battery compartment and install the battery cover.
- Test the CO alarm by using the TEST/SILENCE button. Ensure the device sound is alarm pattern.
- Choose a standard 120V unswitched outlet to plug the CO alarm into.
- Turn the plug of the product 90 degrees outward and plug the CO alarm into the outlet.
- Make sure the green light stays on.

As you install the CO alarm, it may sound for several minutes, then stop and enter in normal operation mode. If it continues to sound, please contact customer service.



4. Understanding Your CO Alarm

4.1 Product Overview



4.1.1 POWER indicator (green)

The green indicator is used to indicate power status of the CO alarm. The power indicator (green) will always light when connecting the AC power supply. And the power indicator (green) will flash every 40 seconds when only battery connecting.

4.1.2 FAULT Indicator (yellow)

The yellow indicator is used to indicate malfunctions or low battery warning or end-of-life status of the CO alarm.

4.1.3 ALARM Indicator (red)

The red indicator is used to indicate alarm status of the CO alarm.

4.1.4 TEST/SILENCE button

The TEST/SILENCE button is used to test the CO alarm and to hush the device during a CO alarm. Press and hold to enable TEST function, or press to enable SILENCE function.

4.1.5 Sounder

The sounder is used to send out CO alarm warning and abnormal warning information.

4.2 Operation and Testing

4.2.1 Start-up

After connecting the battery or AC power supply, three color indicators (green /yellow/red) will light up briefly and the CO alarm confirms start-up with a beep. The LCD screen will display full segment code for 4 seconds.

After power on, 60 seconds before the POWER indicator (green) flash once every 1 seconds and the LCD screen will display the countdown of 60 seconds, this is preheated state.



NOTE: The purpose of LCD full segment code display during power on prompt is to check whether the LCD screen is good or not.

NOTE: When the LCD is fully displayed, the " " does not mean that the battery is low, the " " does not mean that the sound is muted, and "888 ppm" does not mean that there is dangerous carbon monoxide concentration around.

4.2.2 Fault warning

If the CO alarm chirps twice every 40 seconds, the fault indicator (yellow) flashes twice at the same time. It indicates the CO alarm is in a malfunctioning condition. The LCD displays " Err ", that means your CO alarm have no detecting function and no respond CO.



⚠ CAUTION! - When Fault warning occurs, replace the CO alarm immediately. Please contact us to more service.

4.2.3 Fault warning silence

When the CO alarm is under the fault warning, pressing the TEST/SILENCE button, it will come into a fault warning silence status for about 10 hours. Fault indicator (yellow) flashes twice every 40 seconds and the LCD displays " Err " and mute symbol.



4.2.4 Low Battery Warning

If the CO alarm chirps once every 40 seconds, the fault indicator (yellow) flashes once at the same time and the LCD displays the low battery symbol. It means the battery is low.



NOTE: When the low battery warning occurs the CO alarm is capable of producing a CO alarm signal for at least 12 hours, and 7 days of low battery warning signal operation.

NOTE: You need to replace the battery as soon as possible when the CO alarm enters this status.

NOTE: The CO alarm will not protect against the risk of carbon monoxide poisoning when the battery has drained.

4.2.5 Low battery warning silence

When the CO alarm is under the low battery warning, pressing the TEST/SILENCE button, it will come into a low battery warning silence status for about 10 hours. Fault indicator (yellow) flashes once every 40 seconds , and the LCD displays low battery symbol and mute symbol.



NOTE: Low battery warning silence is not available when the battery voltage is particularly low.

NOTE: The silence feature of low battery warning is temporary action to cancel warning sound effect, you need to replace the batteries as soon as possible.

4.2.5 CO alarm

When the device reaches the alarm conditions required by the standard, it will emit a loud alarm pattern. The alarm signal pattern is 4 short beeps followed by 5 seconds of silence. This cycle repeats as long as a dangerous CO condition exists. The ALARM indicator (red) will flash the same pattern. The LCD keeps showing real-time CO concentration. This signal will repeat until dissipation of CO.

CO alarm sensitivity setting (conforms to UL 2034):
30 ppm without alarm in 30 days
70 ppm between 60 to 240 minutes
150 ppm between 10 to 50 minutes
400 ppm between 4 to 15 minutes



- ATTENTION!** - Refer to“ 1. What to do if the CO alarm sounds” when you hear the sounds of the CO alarm warning.
- DANGER!** - If the CO alarm sounds, and it is not being tested, it means the CO alarm is sensing a dangerous level of CO, **THE SOUND OF THE ALARM REQUIRES YOUR IMMEDIATE ATTENTION AND ACTION.**

4.2.7 CO alarm silence

When the device during CO alarm mode, pressing the TEST/SILENCE button, it will be paused alarm sound of the device about 5 minutes. The ALARM indicator (red) will keep flash as CO alarm mode, the LCD displays real-time CO concentration and mute symbol. It indicates the device is running into the CO alarm silence mode.



- DANGER!** - Before enable feature of CO alarm warning silence, you should be confirmed that the alarm is due to dangerous levels of carbon monoxide and the dwelling should be ventilated.

4.2.8 Test the CO alarm

The CO alarm should be tested once per week, to check that all visual and audible signals are working.

Press the TEST/SILENCE button for 2 seconds to activate a full test cycle showing all indicator/messages (green, yellow, red) and sound the audible output at a reduced level. If you wish, hold the TEST/SILENCE button for more than 10 seconds to test with the full 85 dB sound level.



NOTE: After the TEST/SILENCE button is enabled, the alarm sounds and the red alarm light flashes. This does not indicate that CO is present.

NOTE: Test the CO alarm weekly! If at any time your CO alarm does not perform as described, replace it immediately.

- WARNING!**-Due to the loudness (85 decibels) of the alarm, always stand an arms-length away from the replace it when testing.

4.2.9 Alarm memory warning

7 days alarm memory function.

When the device detects CO and alarms, after it exits the alarm, the ALARM indicator (red) will flash once every 40 seconds and the LCD will display "AL".

After pressing the TEST/SILENCE button, the LCD displays the recorded maximum CO concentration for 5 seconds, and the product will clear the alarm memory warning.

Or 7 days later, the CO alarm will automatically clear the alarm memory prompt.



NOTE: Press and hold the TEST/SILENCE button to clear the maximum concentration value memorized and enter the test alarm state.

4.2.10 End-of-life warning

After 10 years of continuous operation, the CO alarm chirps 3 times every 40 seconds, while the fault indicator (yellow) flashes 3 times and the LCD screen displays "End". It indicates this CO alarm is in end-of-life.



NOTE: You need to replace the CO alarm as soon as possible when the CO alarm enters this status.

NOTE: The replacement date that appears on the CO alarm is the date beyond which the CO alarm might no longer detect carbon monoxide accurately and should be immediately replaced.

4.2.11 End-of-life reset

When the CO alarm enters the end-of-life warning state in the first 30 days, press the button to reset the end-of-life. At this point, if the CO alarm is still available, it will enter the normal standby state for 24 hours, after 24 hours, the CO alarm will return to the end-of-life warning state. After 30 days of the first end-of-life warning state, the CO alarm can no longer be reset and needs to be replaced in a timely manner.

NOTE: Low battery warning silence is not available when the battery voltage is particularly low.

NOTE: The silence feature of low battery warning is temporary action to cancel warning sound effect, you need to replace the batteries as soon as possible.

4.3 Troubleshooting

- CAUTION!** -Do not attempt to repair the CO alarm. It will affect your warranty.
- If the CO alarm is not operating properly, and is still under warranty, return it to the place of purchase. Pack it in a well-padded carton, and ship to the place of purchase.
- If the CO alarm is no longer under warranty, have a licensed electrician replace it immediately with a comparable alarm

Troubleshooting Guide

Problem	Method of Disposal
The CO alarm does not sound when TEST/SILENCE button is pressed.	1) Ensure CO alarm is powered off. Replace new battery and confirm that it has normal function after replacement. 2) The CO alarm is under "Fault warning" mode. Please ensure the CO alarm is under "Normal operation" mode then test the CO alarm. 3) Clean the CO alarm. Please refer to "6. General maintenance". 4. If there are still failures during warranty, you can return it to your retailer. 5) If the CO alarm is out of warranty, please replace with another new CO alarm.
The CO alarm chirps once with FAULT indicator (yellow) flashing once every 40 seconds.	LOW BATTERY VOLTAGE SIGNAL 1) The battery is under low battery status, please replace the battery. 2) It may be that a back-up battery has not been properly installed. Please confirm that the batteries have been installed correctly.
The CO alarm chirps twice with FAULT indicator (yellow) flashing twice every 40 seconds.	MALFUNCTION SIGNAL Clean this CO alarm. Please refer to "5. General maintenance ". 1) If the CO alarm is under warranty, please return it to your retailer for replacement. 2) If the CO alarm is out of warranty, please replace with another new CO alarm.
The CO alarm chirps three times with FAULT indicator (yellow) flashes three times every 40 seconds.	END-OF-LIFE SIGNAL Please replace the alarm.
The CO alarm sounds unwanted alarms when residents are cooking, taking showers, etc.	Open the window.

5. General Maintenance

To keep your CO alarm in good working order, please follow these simple steps:

- 1) Verify the device's alarm sound and indicators operation by pressing the TEST/SILENCE button once a week.
- 2) Remove the CO alarm from the wall and clean the alarm cover and vents with a soft brush attachment once a month to remove dust and dirt.
- 3) Never use detergents or other solvents to clean the CO alarm.
- 4) Avoid spraying air fresheners, hair spray, or other aerosols near the CO alarm.
- 5) Do not paint the CO alarm. Paint will seal the vents and interfere with the sensor's ability to detect CO. Never attempt to disassemble the CO alarm or clean inside. This action will void your warranty.
- 6) As soon as possible, place the CO alarm back in its proper location to assure continuous protection from carbon monoxide poisoning.
- 7) When household cleaning supplies or similar contaminants are used, the area should be ventilated.

- WARNING!**-The following substances can affect the sensor and may cause false actions: methane, propane, isobutane, isopropanol, ethylene, benzene, toluene, ethyl acetate, hydrogen sulfide, sulfur dioxides, alcohol based products, paints, thinner, solvents, adhesives, hair sprays, after shaves, perfumes and some cleaning agents.

- WARNING!**-Your CO alarm will not be operational and will not monitor for CO levels without battery and AC power supply.

- WARNING!**-This apparatus is designed to protect individuals from the acute effects of carbon monoxide exposure. It may not however, prevent the chronic effects of carbon monoxide exposure and will not fully safeguard individuals at special risk or with specific medical conditions. If in doubt consult a medical practitioner.

6. Carbon Monoxide (CO) Overview

Carbon monoxide (CO) is a colorless, odorless, and tasteless poison gas that can be fatal when inhaled. CO inhibits the blood’s capacity to carry oxygen.

6.1 Possible Sources of CO

- 1) Excessive spillage or reverse venting of fuel burning appliances caused by:
 - i) Outdoor ambient conditions such as wind direction and/or velocity, including high gusts of wind; heavy air in the vent pipes (cold/humid air with extended periods between cycles).
 - ii) Negative pressure differential resulting from the use of exhaust fans.
 - iii) Simultaneous operation of several fuel burning appliances competing for limited internal air.
 - iv) Vent pipe connection vibrating loose from clothes dryers, furnaces, or water heaters.
 - v) Obstructions in or unconventional vent pipe designs which amplify the above
 - vi) Poorly designed or maintained chimneys and/or vents.
- 2) Extended operation of unvented fuel burning devices (range, oven, fireplace, etc.).
- 3) Temperature inversions which can trap exhaust gasses near the ground.
- 4) Car idling in an open or closed attached garage, or near a home.

6.2 Symptoms of CO Poisoning

Initial carbon monoxide poisoning symptoms are similar to the flu with no fever and can include dizziness, severe headaches, nausea, vomiting and disorientation. Everyone is susceptible but experts agree that unborn babies, pregnant women, senior citizens and people with heart or respiratory problems are especially vulnerable. If symptoms of carbon monoxide poisoning are experienced seek medical attention immediately. CO poisoning can be determined by a carboxyhemoglobin test.

The following symptoms are related to CARBON MONOXIDE POISONING and should be discussed with ALL members of the household:

- 1) **MILD EXPOSURE:** Slight headache, nausea, vomiting, fatigue (often described as“ Flu-like” symptoms).

- 2) **MEDIUM EXPOSURE:** Severe throbbing headache, drowsiness, confusion, fast heart rate.
- 3) **EXTREME EXPOSURE:** Unconsciousness, convulsions, cardio respiratory failure and death. The above levels of exposure relate to healthy adults. Levels differ for those at high risk. Many cases of reported carbon monoxide poisoning indicate that while victims are aware they are not feeling well, they become so disoriented they are unable to save themselves by either exiting the building, or calling for assistance. Also, young children and household pets may be the first affected.

- WARNING!** - Exposure to high levels of carbon monoxide can be fatal or cause permanent damage and disabilities.
- WARNING!** - The device may not prevent the chronic effects of carbon monoxide exposure and that the device will not fully safeguard individuals at special risk.

7. Power Information

7.1 Power supply

This alarm is powered by 120V AC and 3V DC (2 pcs 1.5V AA batteries). Under normal conditions, a fresh battery should last at least one year.

NOTE: CONSTANT EXPOSURES TO HIGH OR LOW TEMPERATURES OR HIGH HUMIDITY MAY REDUCE BATTERY LIFE.

NOTE: Battery installation or replacement is necessary for the life of the CO alarm.

7.2 Battery deactivation

This alarm is equipped with a low battery monitor circuit. If the battery capacity is near the point where it can no longer provide adequate power for all alarm functions, the low battery condition will occur. See Troubleshooting Guide.

The battery must be replaced immediately of the first occurrence of the "Low Battery Warning" to provide continuous alarm protection. To install or replace the battery in CO alarm, please perform the following steps:

- 1) Remove the CO alarm from the wall socket.
- 2) Open battery compartment.
- 3) Remove the old battery, and replace with new battery.
- 4) Put the battery into the battery compartment.
- 5) Test alarm using the TEST/SILENCE button, if the testing alarm is ok, means the product can work normally.
- 6) Re-install the alarm in the wall socket and make sure the green light stays on.

- WARNING!** - Use only the battery specified. Use of different battery may have a detrimental effect on the alarm.
- WARNING!** - The AC power is danger. When you replace battery, you must make sure the AC power is turned off.
- CAUTION** - Please replace new 2 pcs same type batteries in the meantime.
- CAUTION** - Test the alarm for correct operation using the TEST/SILENCE button, whenever the battery is replaced!
- NOTE:** Do not use lithium batteries in this CO alarm, a good safety measure is to replace the battery at least once a year.

7.3 Battery disposal

- WARNING!** -Fire, explosion and severe burn hazard. Do not recharge, crush disassemble, heat above 100°F, incinerate or expose contents to water.
- 1) Not to dispose of battery (or the device) as unsorted municipal waste but collect it separately.
 - 2) Dispose of in accordance with all applicable federal, state and local regulations.

8. Product Specifications

Model: 6200
Product standards:
UL 2034 – CO Alarms [UL 2034]
CSA 6.19 – CO Alarms for Canada [2017]
Power supply: 120V AC, 60Hz, 35mA max
3V DC (2pcs AA alkaline batteries)
Recommend battery type: Energizer E91, Gold Peak GN15A
Sensor of CO: Electrochemical
CO alarm sensitivity setting (conforms to UL 2034):
30 ppm without alarm in 30 days
70 ppm between 60 to 240 minutes
150 ppm between 10 to 50 minutes
400 ppm between 4 to 15 minutes

CO alarm silence: About 5 minutes
Product life: 10 years after manufacture
Operation ambient condition: 40°F (4.4°C)~100°F (37.8°C), 25~95% RH non-condensing
Alarm mode: Sound and light alarm
Alarm sound: >85 dB (A) at 10 feet (3.05 m)
Low battery warning silence: About 10 hours
Installation location: Wall
Detection range: Max. 40 m² within a room.
Size: About 132 x 73 x 37mm
Other function: Flashlight
Accuracy of digital display:
30-999 PPM +/-30% when measured in conditions of 80° F (+/- 10° F), atmospheric pressure +/- 10% and 40% +/- 3% relative humidity. Display readings may vary slightly depending on changes in the ambient condition (temperature, humidity) and the condition of the sensor.
NOTE: This CO alarm is designed to detect carbon monoxide gas from any source of combustion. It is not designed to detect any other gas.

9. Recognizing Nuisance Alarms

Carbon Monoxide (CO) Nuisance

RESET: Pressing the TEST/SILENCE button during CO alarm allows the CO alarm to reset calculations and double check for the presence of CO. If the CO alarm re-alarms within 6 minutes, it is sensing high levels of CO which can quickly become a dangerous situation. Move to fresh air and call 911.

WARNING! - It is impossible to determine the source of CO using sight or smell. Always consider a CO alarm event as dangerous.

10. Manufacturer and Customer Service Info

Rely Innovations

ADDRESS: 555 Matthews Drive, Canton, MS 39046
Internet: www.relysafety.com

11. Warranty Information

THREE YEAR LIMITED WARRANTY

Our products are subject to strict quality controls. However, if this device should unexpectedly not function perfectly, please get in touch with us at the customer service address provided in the Manufacturer and Customer Service Info section.

THE WARRANTY PERIOD IS 36 MONTHS AND BEGINS ON THE DAY OF PURCHASE

Please retain your receipt as proof of purchase. Warranty claims can only be made for possible defects caused by material and production faults. During the warranty period, if service is required, do not return the product to your retailer. For Warranty Service, defective devices can be sent to the customer service address provided (postage paid). A new or repaired device will be returned to you. After the warranty period has expired, you still have the option of sending the defective device for repair to the customer service address. Repairs carried out after the warranty period must be paid for.

In the event of misuse or improper treatment, use of force, or intervention not carried out by our authorized service branches, the warranty is no longer valid. This warranty does not restrict your legal rights. In the event of a warranty claim, please return the receipt and completed warranty card with fault description along with the defective device.

The warranty does NOT cover the batteries supplied.

11. Warranty Card

Last Name: _____

First Name: _____

Phone: _____

Address: _____

Country: _____

Zip Code: _____

Fault description: _____

Date of purchase: _____

Signature: _____