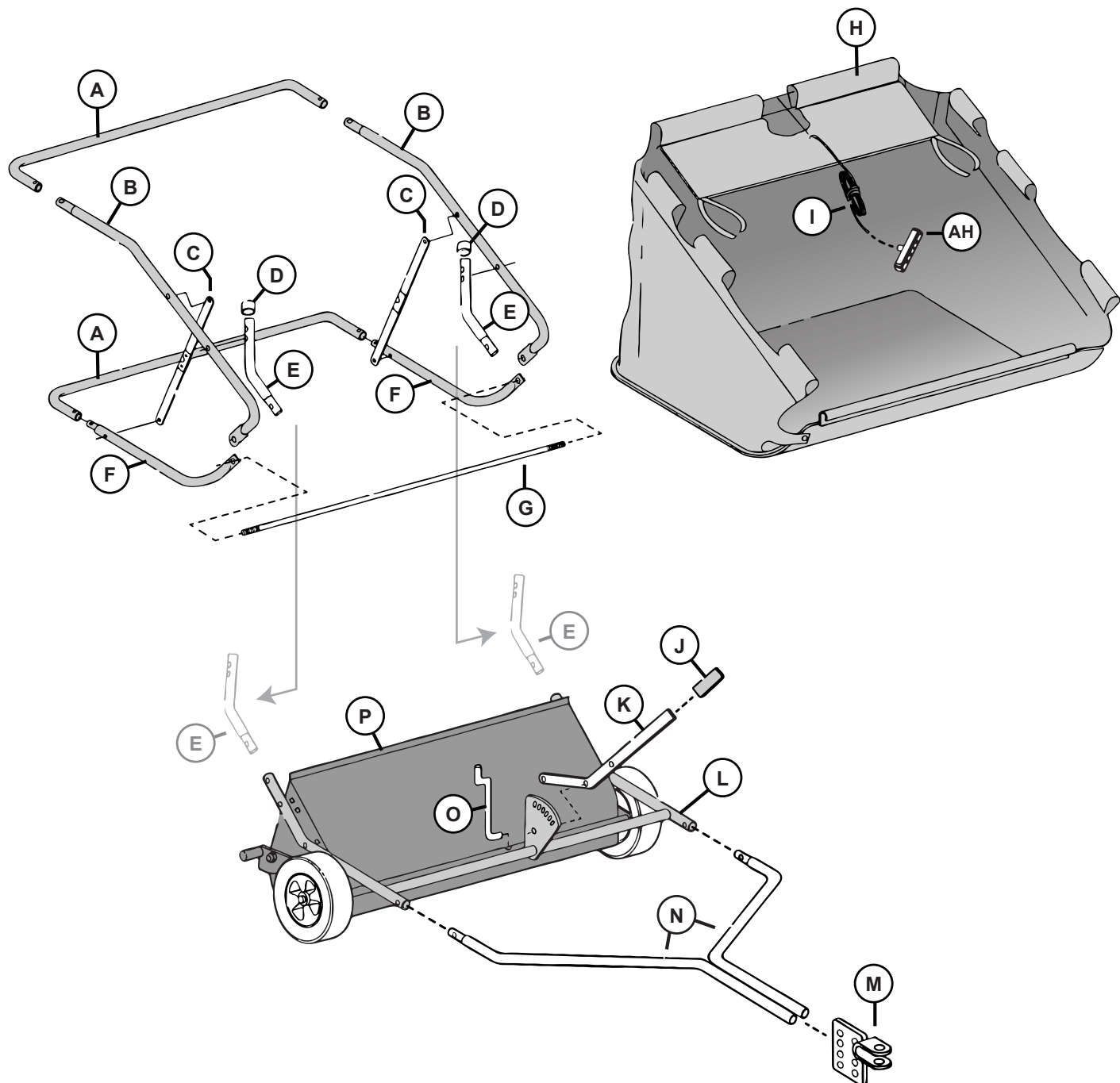


Parts



Parts

Parts

(A) Rear Tube	2
(B) Upper Tube	2
(C) Spreader Bar Assembly	2
(D) Vinyl Cap <i>(reference, included in the Hardware Skin Pack)</i>	2
(E) Hamper Mount Tube	2
(F) Lower Tube	2
(G) Hamper Stop Rod	1
(H) Hamper, w/ Windscreen	1
(I) Hamper Pull Rope	1
(J) Handle Grip <i>(reference, included in the Hardware Skin Pack)</i>	1
(K) Lift Handle	1
(L) Upper Frame Assembly	1
(M) Hitch Clevis Assembly	1
(N) Tow Tube	2
(O) Lift Link <i>(reference, included in the Hardware Skin Pack)</i>	1
(P) Brush Housing Assembly / Drive Unit	1
(ah) Pull Handle	1

Bag of Parts

(Q) Bolt; Hex, 5/16 x 2-1/4 in.	2
(R) Bolt; Hex, 5/16 x 1-1/2 in.	2
(S) Bolt; Hex, 5/16 x 1-3/4 in.	1
(T) Bolt; Carriage, 5/16 x 1-1/2 in.	4
(U) Screw, 1/4 x 1-1/4 in.	4
(V) Pin; Lock	1
(W) Pin; Hitch, 1/2 x 2-1/2 in.	1
(X) Hairpin Cotter; Large	1
(Y) Lockwasher, 5/16 in.	1
(Z) Washer; Flat, 5/16 in.	2
(aa) Nut; Standard, 5/16 in.	1
(bb) Locknut; Nylock, 5/16 in.	11
(cc) Locknut, 1/4 in.	4
(dd) Push Connector, 5/16 x 5/8 in.	4
(ee) Spring	1
(ff) Pin; Clevis Pin, 5/16 x 1-3/8 in.	2
(gg) Hairpin Cotter; Small	2
(hh) Washer; Special Flat, 5/16 in.	4
(ii) Nut; Standard Hex, 3/8 in.	2
(jj) Locknut; Hex, 3/8 in.	2
(kk) Bolt; Hex, 5/16 x 2-1/2 in.	2

(Also listed under main Parts in Kit)

(D) Vinyl Cap (D)	2
(J) Handle Grip (J)	1
(O) Lift Link (O)	1

Parts

