



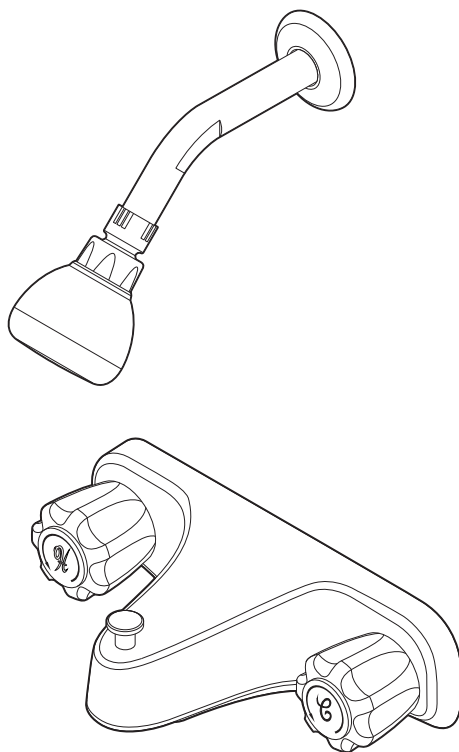
**PROJECT
SOURCE.™**

ITEM #0434266

TUB AND SHOWER FAUCET

MODEL #F201E510CP

Français / Español p. 10



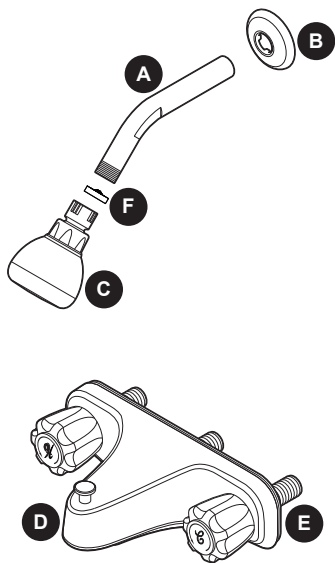
ATTACH YOUR RECEIPT HERE

Serial Number _____ Purchase Date _____



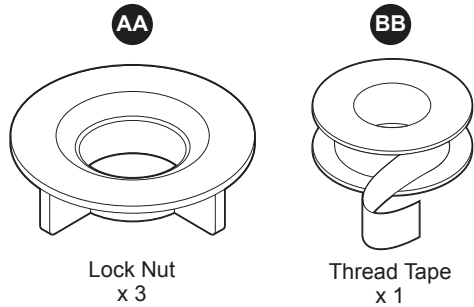
Questions, problems, missing parts? Before returning to your retailer, call our customer service department at 1-866-389-8827, 8 a.m. - 8 p.m., EST, Monday - Friday.

PACKAGE CONTENTS



PART	DESCRIPTION	QUANTITY
A	Shower Arm	1
B	Shower Arm Flange	1
C	Showerhead	1
D	Faucet	1
E	Putty Plate (preassembled)	1
F	Screen washer (preassembled)	1

HARDWARE CONTENTS





SAFETY INFORMATION

Please read and understand this entire manual before attempting to assemble, operate or install the product.

WARNING

- Follow these installation instructions carefully. Proper installation is the installer's responsibility.
- Check local building codes before beginning installation to ensure compliance.
- This product might require being installed with an automatic temperature compensating device to reduce the risk of scalding and thermal shock. Check with your local plumbing code requirements before installation. The product should be installed by a local licensed plumber.
- If you use soldering for the installation of the faucet, the seats cartridges and washers will have to be removed before using flame. Otherwise, warranty will be void on these parts.

PREPARATION

Before beginning assembly of product, make sure all parts are present. Compare parts with package contents list and hardware contents list. If any part is missing or damaged, do not attempt to assemble the product.

Estimated Assembly Time: 30 minutes

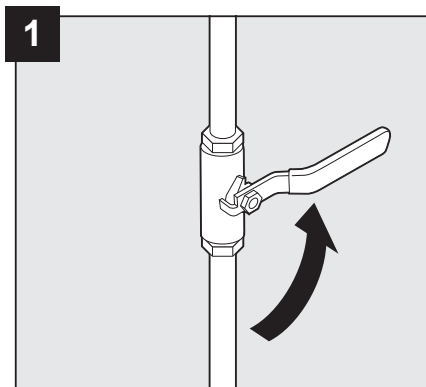
Tools Required for Assembly (not included): Adjustable wrench, silicone sealant.

Helpful Tools (not included): Channel-lock pliers, safety goggles, 1/2 in. female adapter with gasket (Slip x FIPT).

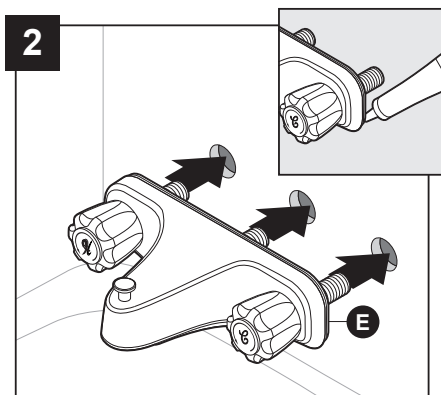
- Prior to beginning installation, turn off the cold and hot water lines and turn on the old faucet to release built-up pressure.
- When installing your new faucet, first hand-tighten connector nuts. Then use one wrench to hold the fitting and a second wrench to tighten the nut an additional 1/4 turn. Connections that are too tight will reduce the integrity of the system.

ASSEMBLY INSTRUCTIONS

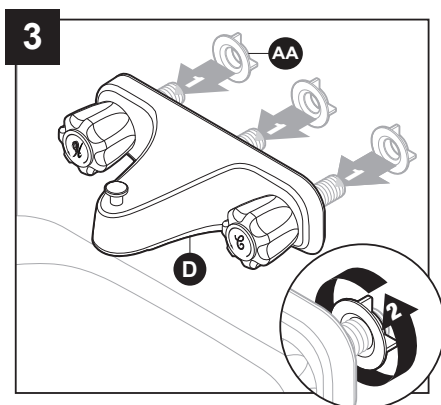
1. Shut off main water supply before installation.



2. Place a bead of clear silicone sealant (not included) around the base of the putty plate (E). Install faucet through shower wall.

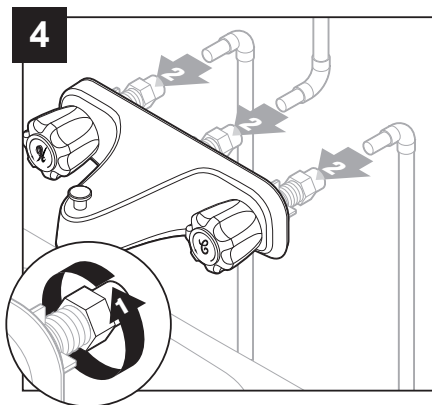


3. Install lock nuts (AA) onto threaded shanks of faucet (D) and hand tighten.

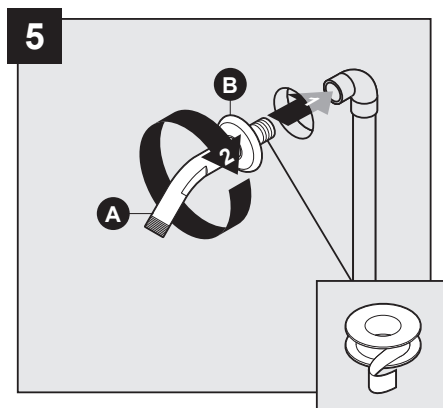


ASSEMBLY INSTRUCTIONS

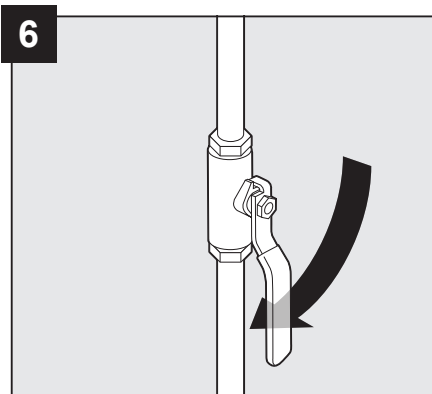
4. **Suggested installation:** Attach a 1/2 in. female adapter with gasket (Slip x FIPT) (not included) to each threaded shank. Slip adapters over 1/2 in. water supply pipe using proper adhesive (not included) where applicable.



5. Install shower arm (A) and shower arm flange (B) to vertical shower pipe elbow (not included).

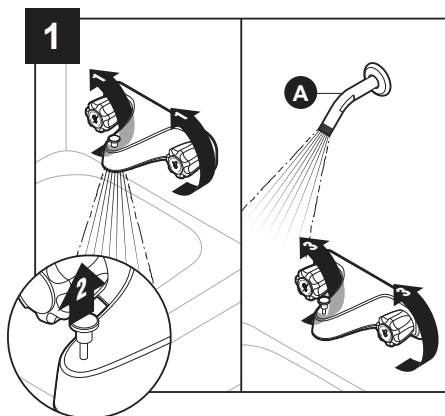


6. Turn on main water supply.

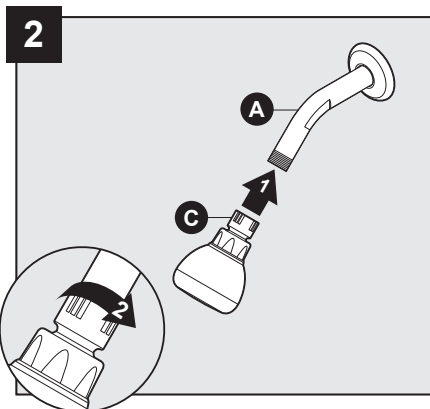


OPERATING INSTRUCTIONS

1. Turn on water and lift shower diverter. Check for leaks at shower arm (A).

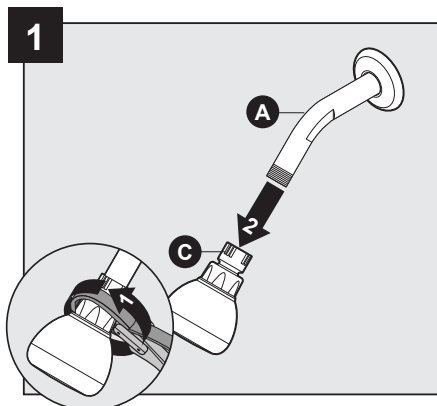


2. Install showerhead (C) to shower arm (A). Hand tighten shower head.



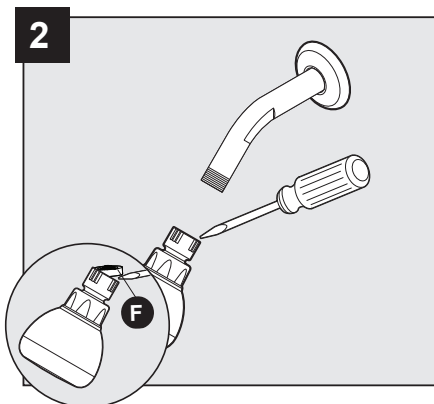
GENTLY CLEAN THE SCREEN WASHER

1. Use a clean strap wrench to remove the shower head (C) from shower arm (A).

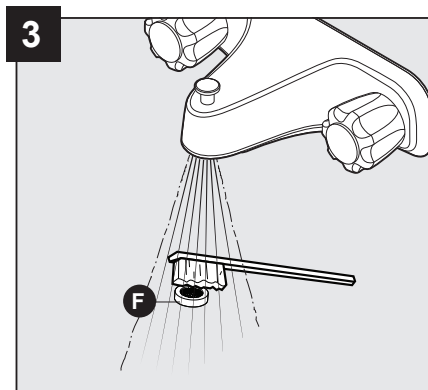


GENTLY CLEAN THE SCREEN WASHER

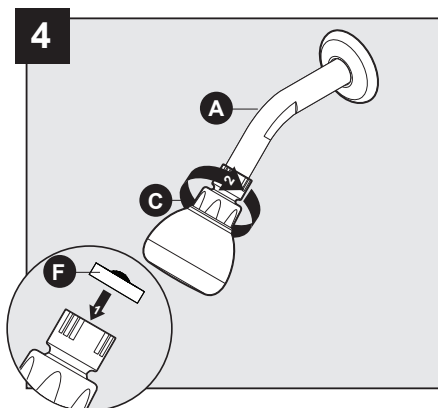
2. Use a flathead screwdriver (not included) to carefully remove the screen washer (F).



3. Gently clean the screen washer (F) with a toothbrush (not included).



4. Reinstall the screen washer (F) and showerhead (C). Hand tighten shower head.



CARE AND MAINTENANCE

- Clean periodically with a soft cloth. Avoid abrasive cleaners, steel wool and harsh chemicals as these will dull the finish and void your warranty.

TROUBLESHOOTING

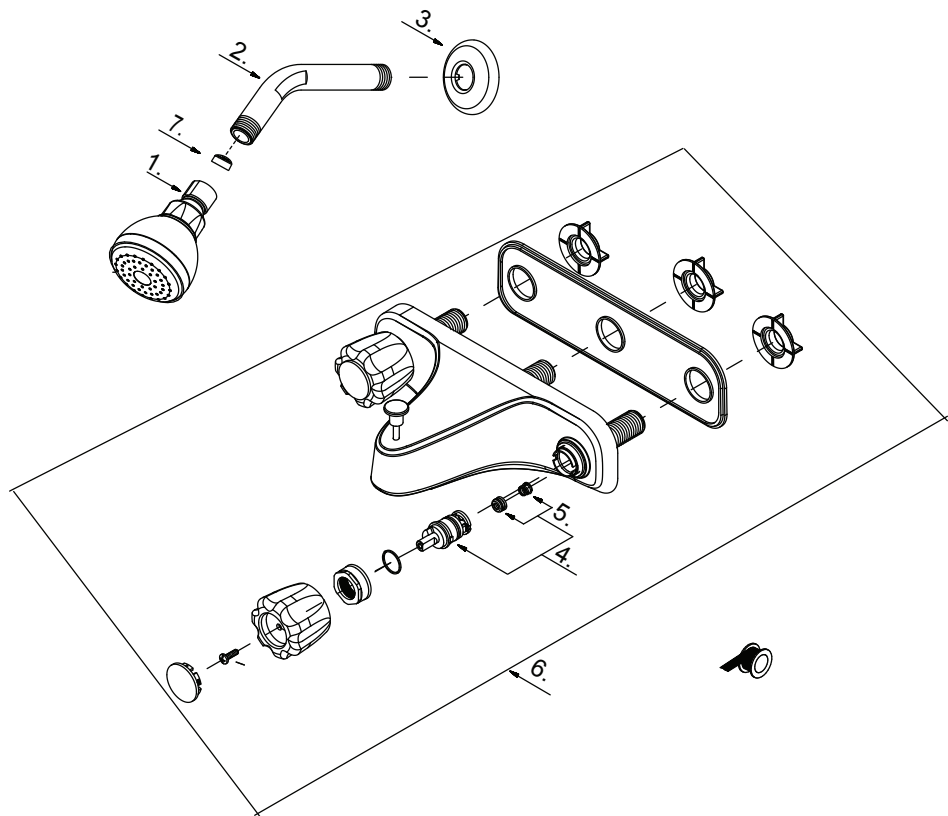
PROBLEM	POSSIBLE CAUSE	CORRECTIVE ACTION
Leak from under handle.	Retainer nut has come loose. O-ring on cartridge is dirty or damaged.	Tighten the retainer nut. Clean or replace O-ring.
Water will not shut off completely.	Rubber valve seat is dirty or broken.	Turn off water supply. Remove handle and cartridge to check rubber valve seat. Clean or replace it.

WARRANTY

The manufacturer warrants this faucet to be free from defects in workmanship and material present at time of shipment from the factory for a limited lifetime from the date of purchase. This warranty applies only to the original purchaser. The manufacturer agrees to correct such defects at no charge or, at our option, replace the faucet with a comparable or superior model. To obtain warranty service, call our customer service department at 1-866-389-8827 for return authorization and shipping instructions. You may be required to present a copy of your sales receipt as proof of purchase. All cost of removal and reinstallation are the expressed responsibility of the purchaser. Any damage to the faucet by accident, misuse or improper installation, or by affixing accessories not produced by the manufacturer, are the purchaser's responsibility. The manufacturer assumes no responsibility whatsoever for faucet installation during the warranty period. There is no further expressed warranty. The manufacturer disclaims any and all implied warranties. The manufacturer shall not be liable for incidental, consequential or special damages arising at or in connection with product use or performance except as may otherwise be accorded by law. This warranty gives you specific legal rights, and you may also have other rights which vary from state to state. This warranty supersedes all prior warranties.

REPLACEMENT PARTS LIST

For replacement parts, call our customer service department at 1-866-389-8827, 8 a.m. - 8 p.m., EST, Monday - Friday.



PART	DESCRIPTION	PART #
1	Showerhead (0434266)	S1213F01
2	Shower Arm	A020000
3	Shower Arm Flange	A019000
4	Cartridge Assembly	A663003
5	Seat & Spring Set	A663002
6	Bathroom faucet	RF0348
7	Screen washer	A010199