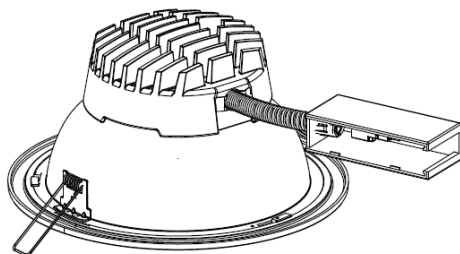
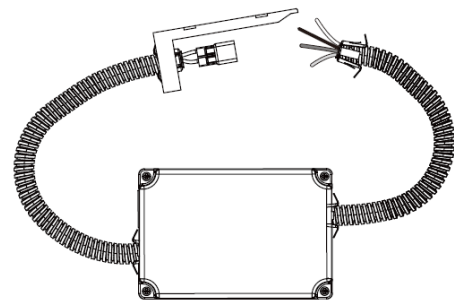


Commercial Retrofit Downlight_ Installation Manual

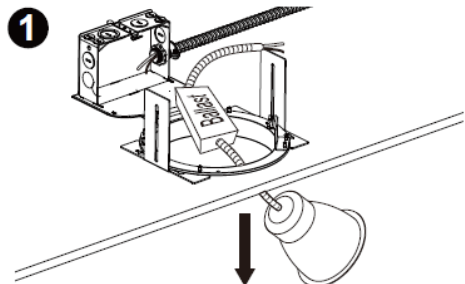
Installation



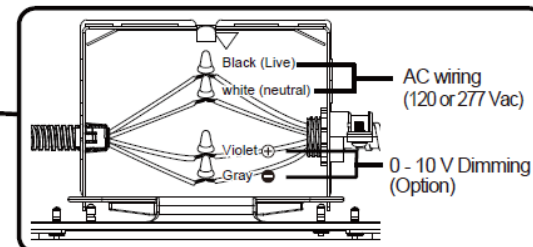
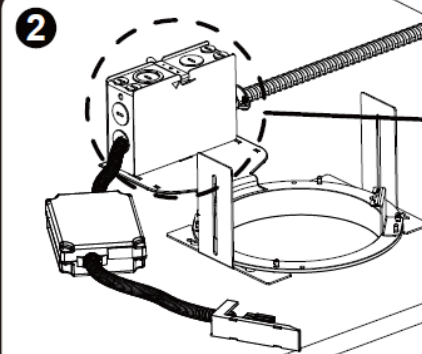
LED Fixture Assembly



Driver Assmembly

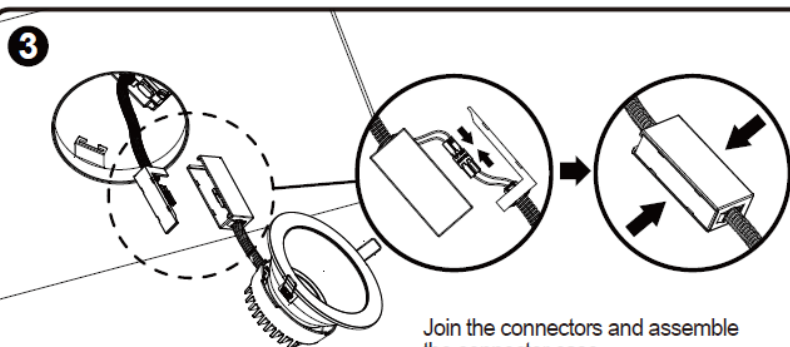


Remove existing components(lamps, ballast, reflector, etc..) and disconnect AC supply wires.

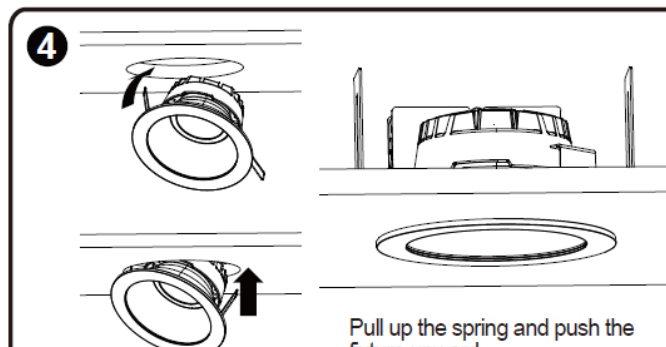


Connect wires as shown in wiring diagram.

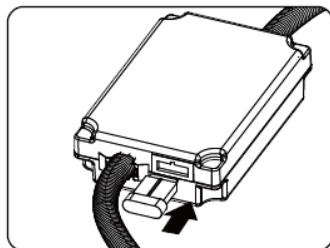
※ To dim the lamps, a compatible dimmer should be used.
Compatible dimmer : NTSTV, DVTV, NTFTV (Lutron)
45167(SYLVANIA)



Join the connectors and assemble the connector case.



Pull up the spring and push the fixture upward.



Wireless Dimming (Optional)

(Only for wireless ready) Remove the dongle cover on the driver then insert the LG wireless module or module connected to LG Multi Sensor. LG LED Downlight is compatible with the Daintree ControlScope™ system.

- ※ When using wireless dimming function, 0-10V dimming will not be served.
- ※ 0-10V dimming should be removed.

