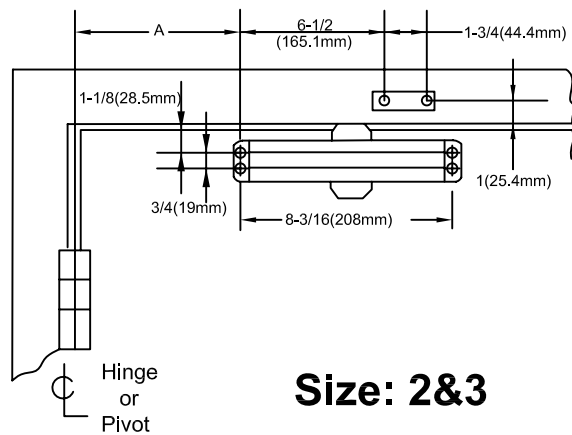


DO05 SERIES
Optional back check

Installation Instructions for REGULAR ARM (PULL SIDE) Mounting
THIS TEMPLATE COVERS REGULAR ARM INSTALLATIONS TO 180 ° OPENING.



Size: 2&3

Right hand door shown
Left hand door shown
Dimensions are in inches
Do not scale drawing

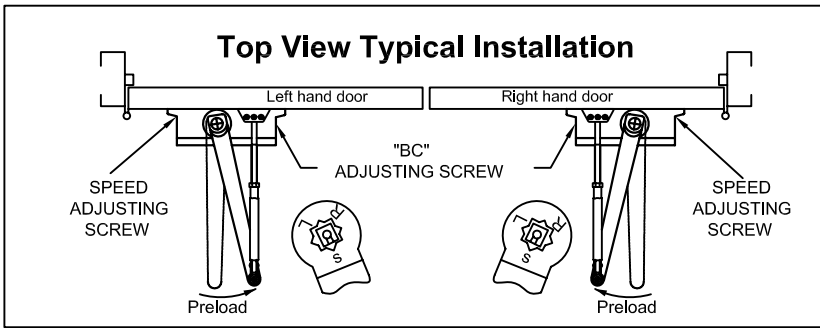
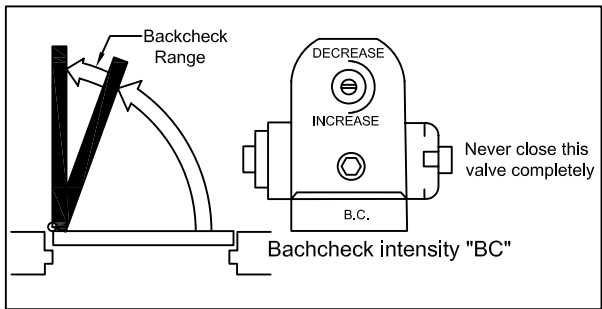
OPENING	DIM. A
TO 120°	6-1/2(165.1mm)
120° -180°	4(101.6mm)

Power Size	Door Weight lbs(kgs)	Exterior doors	Interior doors
2	55-99(25-45)	8.5lb -f	34"
3	99-143(45-65)	30"	38"

INSTALLATION INSTRUCTONS

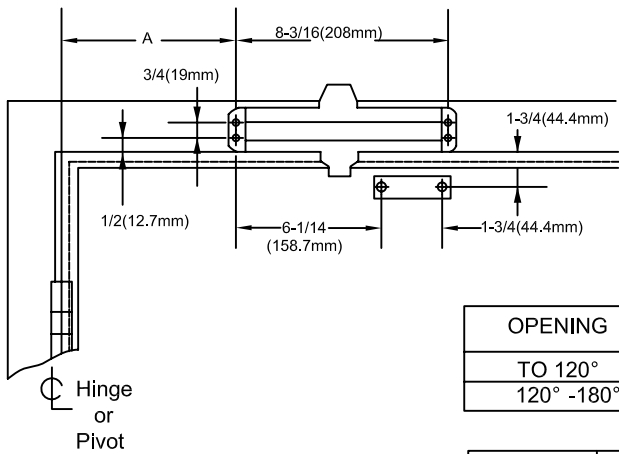
- 1.Select door opening and use dimensions shown above, mark four (4) holes on frame door and two (2) holes on door of arm shoe.
- 2.Drill pilot holes in door and frame for # 14 all-purpose screws or drill or tap for 1/4-20 machine screw.
- 3.Intall forearm/arm shoe assembly to door using screws provided.
- 4.Mount closer on frame using screw provided. SPEED ADJUSTING VALVE MUST BE POSITIONED TOWARD HINGE EDGE.
- 5.Install main arm to top pinion shaft, perpendicular to frame when assebled to preload main arm (illustration below). Secure forearm to main arm with screw/washer assmebly provided.
- 6.Adjut length of forearm so that forearm is perpendicular to frame when assebled to preload main arm (illustration below). Secure forearm to main arm with screw /washer assembly provided.
- 7.Snap pinion cap over shaft at bottom of closer.
- 8.Adjust closing speed of door. following instructions as shown page 1.

NOTED:These instructions apply to closers equipped with backcheck.
To increase backcheck intensity, turn valve marked "BC"clockwise.
To decrease backcheck intensity, turn valve marked BC counter-clockwise



DO05 SERIES
Optional back check

Installation Instructions for TOP JAMB (PULL SIDE) Mounting
THIS TEMPLATE COVERS REGULAR ARM INSTALLATIONS TO 180 ° OPENING.



OPENING	DIM. A
TO 120°	6-1/2(165.1mm)
120° -180°	4(101.6mm)

Power Size	Door Weight lbs(kgs)	Exterior doors	Interior doors
2	55-99(25-45)	8.5lb -f	34"
3	99-143(45-65)	30"	38"

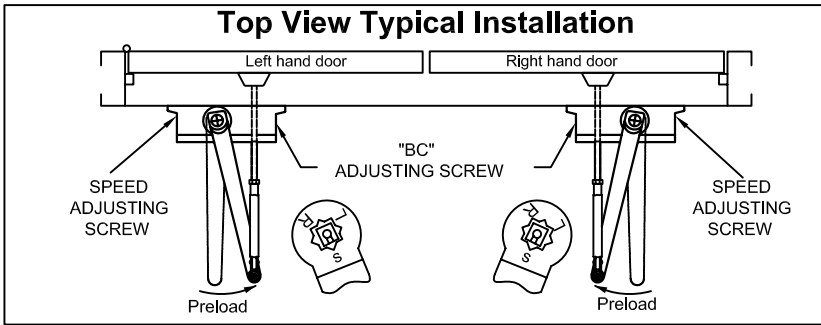
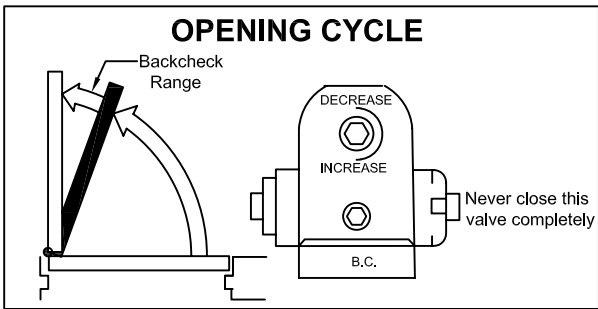
Left hand door shown
Right hand door shown
Dimensions are in inches
Do not scale drawing

OPEN CYCLE

NOTED:These instructions apply to closers equipped with backcheck.
To increase backcheck intensity, turn valve marked "BC"clockwise.
To decrease backcheck intensity, turn valve marked BC counter-clockwise

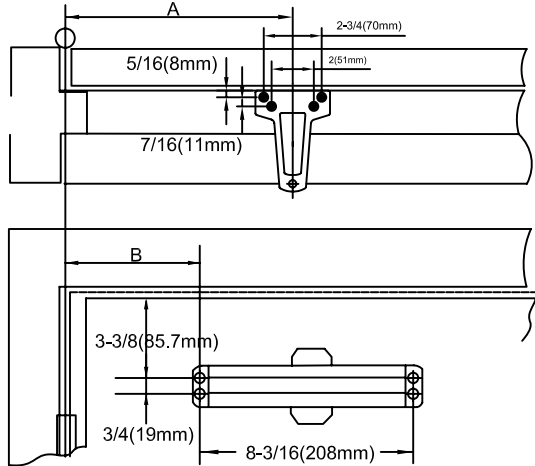
INSTALLATION INSTRUCTONS

- 1.Select door opening and use dimensions shown above, mark four (4) holes on frame door and two (2) holes on door of arm shoe.
- 2.Drill pilot holes in door and frame for # 14 all-purpose screws or drill or tap for 1/4-20 machine screw.
- 3.Intall forearm/arm shoe assembly to door using screws provided.
- 4.Mount closer on frame using screw provided. SPEED ADJUSTING VALVE MUST BE POSITIONED TOWARD HINGE EDGE.
- 5.Install main arm to top pinion shaft, perpendicular to frame when assebled to preload main arm (illustration below). Secure forearm to main arm with screw/washer assmebly provided.
- 6.Adjut length of forearm so that forearm is perpendicular to frame when assebled to preload main arm (illustration below). Secure forearm to main arm with screw /washer assembly provided.
- 7.Snap pinion cap over shaft at bottom of closer.
- 8.Adjust closing speed of door. following instructions as shown page 1.



DO-05 SERIES
Optional back check

Installation Instructions for PARALLEL ARM (PUSH SIDE) Mounting
THIS TEMPLATE COVERS REGULAR ARM INSTALLATIONS TO 180 ° OPENING.



Hinge or Pivot
Left hand door shown
Right hand door shown
Dimensions are in inches
Do not scale drawing

Size: 2&3

OPENING	DIM. A	DIM. B
TO 120°	10-3/4(277.8mm)	7-13/16(198.4mm)
120° -180°	8-3/4(222.2mm)	5-5/8(142.9mm)

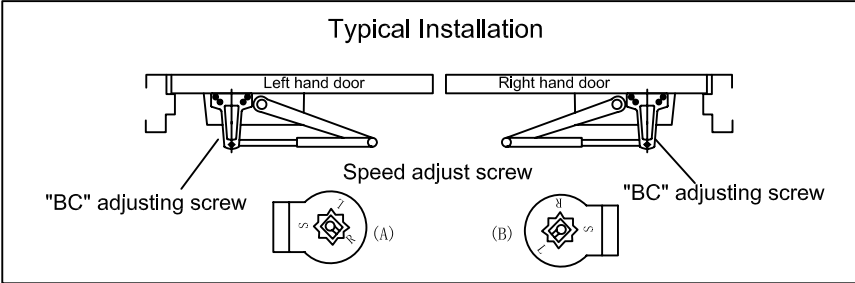
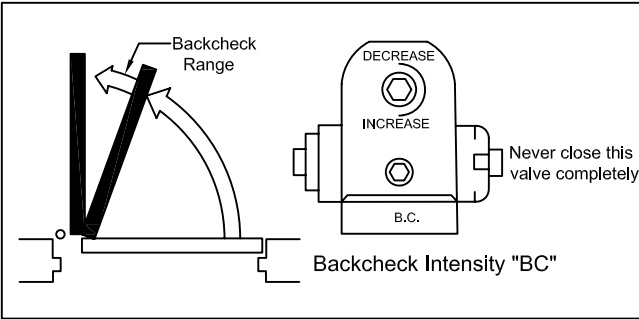
Power Size	Door Weight lbs(kgs)	Exterior doors	Interior doors
2	55-99(25-45)	8.5lb -f	34"
3	99-143(45-65)	30"	38"

INSTALLATION INSTRUCTONS

- 1.Select door opening and use dimensions shown above, mark four (4) holes on frame door and two (2) holes on door of arm shoe.
- 2.Drill pilot holes in door and frame for # 14 all-purpose screws or drill or tap for 1/4-20 machine screw.
- 3.Intall forearm/arm shoe assembly to door using screws provided.
- 4.Mount closer on frame using screw provided. SPEED ADJUSTING VALVE MUST BE POSITIONED TOWARD HINGE EDGE.
- 5.Install main arm to top pinion shaft, perpendicular to frame when assembeled to preload main arm (illustration below). Secure forearm to main arm with screw/washer assmebly provided.
- 6.Adjut length of forearm so that forearm is perpendicular to frame when assmebled to preload main arm (illustration below). Secure forearm to main arm with screw /washer assembly provided.
- 7.Snap pinion cap over shaft at bottom of closer.
- 8.Adjust closing speed of door. following instructions as shown page 1.

OPEN CYCLE

NOTED:These instructions apply to closers equipped with backcheck.
To increase backcheck intensity, turn valve marked "BC"clockwise.
To decrease backcheck intensity, turn valve marked BC counter-clockwise



DO05 SERIES
Optional back check
Size 2 & 3
Non hold open

INSTALLATION INSTRUCTIONS

Regular Arm installation
Closer installs on PULL/HINGE side of door

illustrate
Non Hold Open Arm
Left Hand Door-RH or
Right Hand Reverse -RHR
See Page 2

Top Jamb Installation
Closer Installs on Frame on PUSH/STOP side of door.

illustrate
Non Hold Open Arm
Left Hand Door-RH or
Right Hand Reverse -RHR
See Page 3

Parallel Arm Installation
Closer installs on PUSH/STOP side of door.

illustrate
Non Hold Open Arm
Left Hand Door-RH or
Right Hand Reverse -RHR
See Page 4

CLOSER ADJUSTMENT

CLOSING CYCLE
NOTE:CLOSING arcs(CLOSE and LATCH) are controlled two (2)separate speed adjusting valves adjust the CLOSING speed first, then adjust the LATCHING speed.

- 1.CLOSING speed adjustment is acomplished by full rotations of the speed adjusting valve.
-Turn the speed adjustment valve CLOCKWISE for a SLOWER CLOSE arc closing speed.
-Turn the speed adjustment valve COUNTER-CLOCKWISE for a FASTER CLOSER arc closing speed.
- 2.LATCH speed adjustments is accomplished by full rotations of the speed adjusting valve.
-Turn the speed adjustment screw CLOCKWISE for a SLOWER LATCHE arc closing speed.
-Turn the speed adjustment screw COUNTER-CLOCKWISE for a FASTER LATCH arc closing speed.

CAUTIONS!
Do not turn speed adjusting valve more than two (2) full turns counter-clockwise from its factory set position,as two speed adjusting valves could become dislodged from the door closer body. resulting in the loss of internal fluid and failure of the device.

