



4K NETWORK VIDEO RECORDER

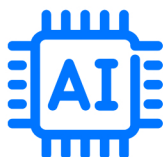
4K
ULTRA HD



FEATURES



Local Expandable Storage
No Hidden Storage Fees



Supports AI Camera Features
Human & Vehicle Detection



Intelligent Video Surveillance
Tripwire, Intrusion, Motion



High Efficiency Video Coding
50% Better Data Compression

4K Ultra HD and Intelligent Video Surveillance

A Quad-Core embedded processor gives this NVR the ability to record 4K resolution video in real time providing you with exquisite footage and superior details. Intelligent Video Surveillance features (IVS) can allow you to monitor areas very precisely and efficiently, so you are only alerted when you want to be. You can know exactly when someone or object crosses an invisible line, leaves or enters a space, and more. Use the Smart Search feature to quickly review IVS events by camera date and time. This will give you a series of single images of IVS events allowing you to quickly review all of the events that happened throughout the day without having to watch hours of video footage. Remote viewing is also a breeze with our free MontavueGO app for Android and Iphone. Watch live footage, get push notifications and more.

Local Storage - No Fees

- Multiple Storage bays gives you room to expand
- Local Storage keeps your footage private and secure
- Built-in Surveillance Grade hard drive included
- Local Storage means no monthly cloud storage fees

Intelligent Video Surveillance

- Allows for more precise monitoring
- Multiple rule types-Tripwire, Intrusion & more (see camera)
- Works with AI and autotracking enabled cameras
- Available options will vary depending on camera model

Artificial Intelligence - Alarm Filtering

- Reduce false alarms with SMD or AI enabled cameras
- Filter objects by Human, Vehicle or both
- Get push notifications on your smart phone.
- Use AI search to quickly review snapshots of events

High Efficiency Encoding -HEVC H.265

- Better data compression at the same level of quality
- Smaller files means you can store more footage
- Improves remote viewing by reducing data rates

Product Specifications

System

Main Processor	Quad-core embedded processor
Operating System	Embedded LINUX

Audio & Video

IP Camera Input	32 Channels, 16 poe ports
Two-Way Talk	1 Channel input, 1 Channel output, RCA

Display

Interface	2 HDMI (up to 3840 x 2160), 1 VGA
Resolution	3840 x 2160, 1920x1080 (default), 1280x1024, 1280x720, 1024x768
Multi-Screen Display	1st screen: 32ch 1/4/8/9/16/25/36 (can be sequenced) 2nd screen: 16ch 1/4/8/9/16 (cannot be sequenced must go in ch order)
On Screen Display	Camera title, Time, Video loss, Camera lock Motion detection, Recording

Recording

Compression	Smart H.265+/H.265/Smart h.264+/H.264/MJPEG (must be supported by cam)
Resolution	8MP, 6MP, 5MP, 4MP, 3MP, 1080p, 1.3MP, 720p, D1 etc. (will be dependent on cam)
Decoding Capability	320Mbps
Bit Rate	16kbs - 20Mbps Per Channel
Record Mode	Manual, Schedule (Regular, MD, IVS, Alarm) Stop
Record Interval	1-120 mins (default: 60min), Pre-record 1-30sec, Post-record 10-30sec

Video Detection & Alarm

Trigger Events	Recording, PTZ, Tour, Alarm Out, Video Push, Email, Snapshot, Buzzer
Video Detection	Motion Detection, MD Zones, Video Loss and Tampering
Alarm Input	16 Channel, Low Level Effective, Green Terminal interface
Relay Output	6 Channel, NO/NV Programmable, Green Terminal Interface

Playback & Backup

Sync Playback	1/4/9/16
Search Mode	Time/Date, Alarm, MD and Smart Search
Playback Function	Play, Pause, Stop, Rewind, Fast play, Slow play, Next File, Previous File, Next Camera, Previous Camera, Full Screen, Backup Selection
Backup Mode	USB Device/Network/eSATA Device

Network

Interface	RJ-45 Ports
Ethernet Port	1 independent gigabit Ethernet Port 1000Mbps (LAN)
PoE	16 ports (IEEE802.3af/at) Max 25.5W per port, 150W in total
Network Function	HTTP, HTTPS, TCP/IP, IPv4/IPv6, UPnP, RTSP, UDP, SMTP, NTP, DHCP, DNS, IP Filter, PPPoE, DDNS, FTP, Alarm Server, IP Search
Max. User Access	128 users
Smart Phone	MontavueGo app, iPhone, Android, iPad
Interoperability	ONVIF 2.4, CGI Conformant

Storage

Internal HDD	4 SATA III Ports, Up to 10TB capacity each 40TB max internal. (external via eSATA)
HDD Mode	Single
eSATA	1 eSATA port allows for additional external storage

Auxillary Interface

USB	3 USB Ports (2 rear USB 3.0, 1 Front USB 2.0)
RS232	1 Port, for PC Communication and Keyboard
RS485	1 Port, for PTZ Control via Green Terminal.

Electrical

Power Supply	Single, AC110v-240v, 50-60 Hz
Power Consumption	<17.5W (without HDD)
Cooling Fans	2 fans, 1for Power Supply, 1 for CPU

Operating Conditions

Operating Conditions	-10°C ~ +55°C (+14°F ~ +131°F) 86~106kpa
Storage Conditions	-20°C~+70°C (-4°F~+158°F) 0~90% RH

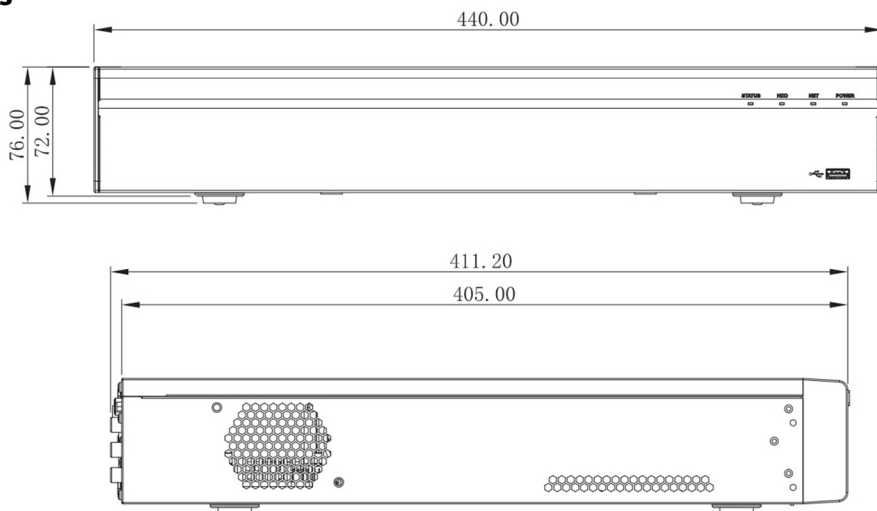
Weight & Dimensions

Dimensions	1.5U, 440mm x 411.1mm x 76mm; (17.3" x 16.2" x 3.0")
Net Weight	4.65kg (10.3lb) (without HDD)
Gross Weight	7kg (15.4lb)
Installation	Rack Mounable with appropriate brackets

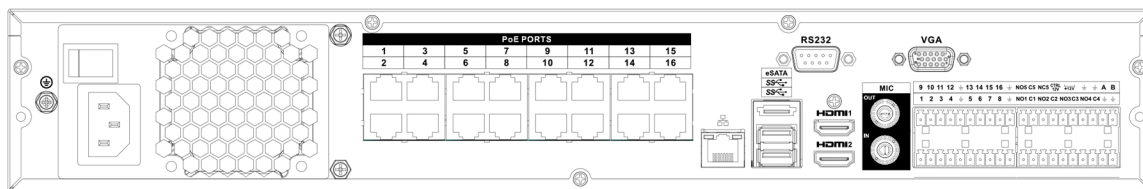
Model Information

MNR12326-16 32-Channel 4K NVR with 6TB HDD

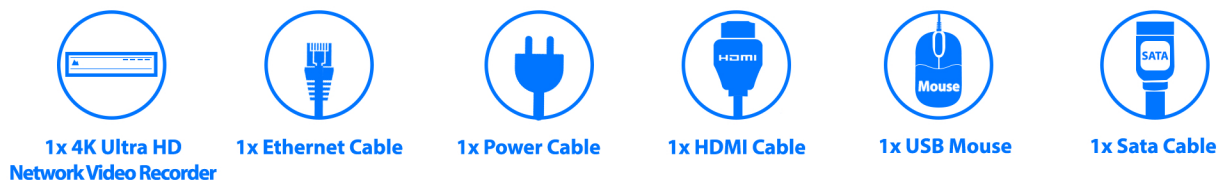
Dimensions



Back Panel



What's in the box



Disclaimers:

1. 4K (8MP) IP Cameras are required for 4K recordings.
2. AI enabled cameras are required to take advantage of AI functions such as Human and Vehicle detection.
3. The accuracy of human and vehicle detection will vary depending on multiple factors, such as the objects distance from the camera, size, height and mounting angle of the camera. Night vision will also affect the accuracy of detection.
4. Remote viewing of security cameras requires a high-speed internet connection. The NVR must be hard wired to a router and does not support wifi. A minimum upload speed of 4Mbps or greater is recommended for best results. Network security measures implemented by you or your internet service provider may affect or prevent p2p remote viewing and will need to be addressed by you or your ISP.
5. HDMI output supports up to 4K @60fps the default output is 1080p. Image quality and resolution when viewing on a monitor or tv is dependent on the resolution of the the monitor or tv resolution as well as the resolution of the camera. Also note that not all 4K monitors will support 4K@60fps. If you change the NVR to a resolution not supported by your monitor you will have to log in via web browser to fix this.