

05 : 00

---

estimated  
installation time



1 or more

---

people required

Ok, let's  
get started!



- Put on mood music!
- To prevent damage to product, use the clean side of package carton or rug as working surface.
- In the event of missing or damaged parts, delivery problems etc., please reach out to our team.  
We will be happy to fix the problem!

# care guide

- Clean regularly with a soft and dry cloth.
- To protect finish, avoid use of abrasive cleaners.
- Wipe up spills immediately. Please!

---

**ⓘ While assembling the product, tighten the bolts up to 50%. Once all parts are in place, only then fully tighten the bolts.**

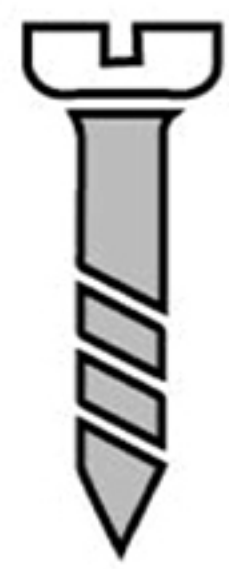


product  
parts



A  
Shelf  
x1

# what's included



(B) - Screw  
x2



(C) - Wall Plug  
x2

# installation instructions

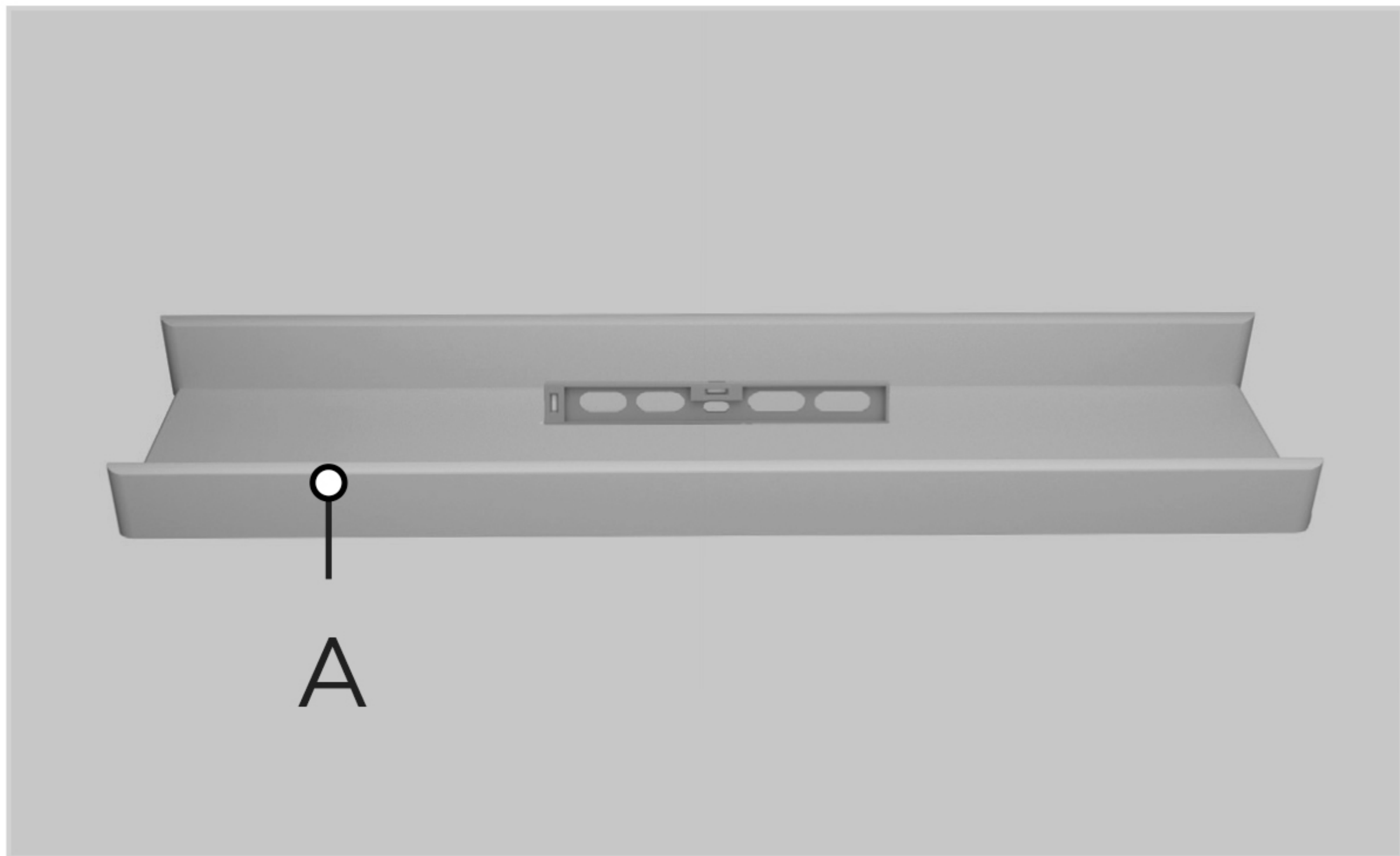
Take a deep breath going in.  
This is easy even if you are not  
used to tools. Just follow these  
steps to the T, and the  
outcome will be  
worth it!



- ⓘ While assembling the product, tighten the bolts up to 50%. Once all parts are in place, only then fully tighten the bolts.

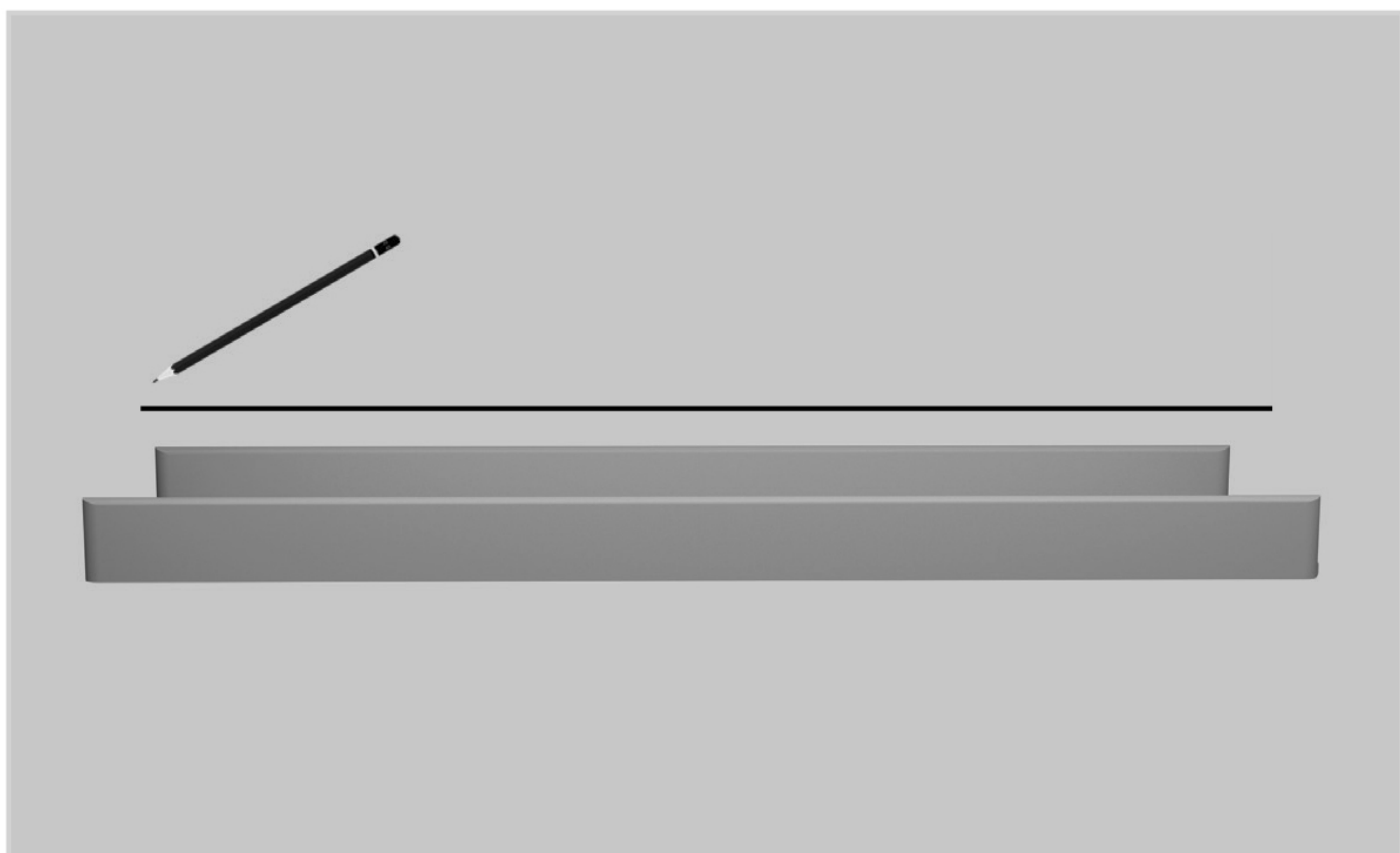
## step 1:

Place the shelf on the wall and put a spirit level on it to check alignment. Adjust if needed.



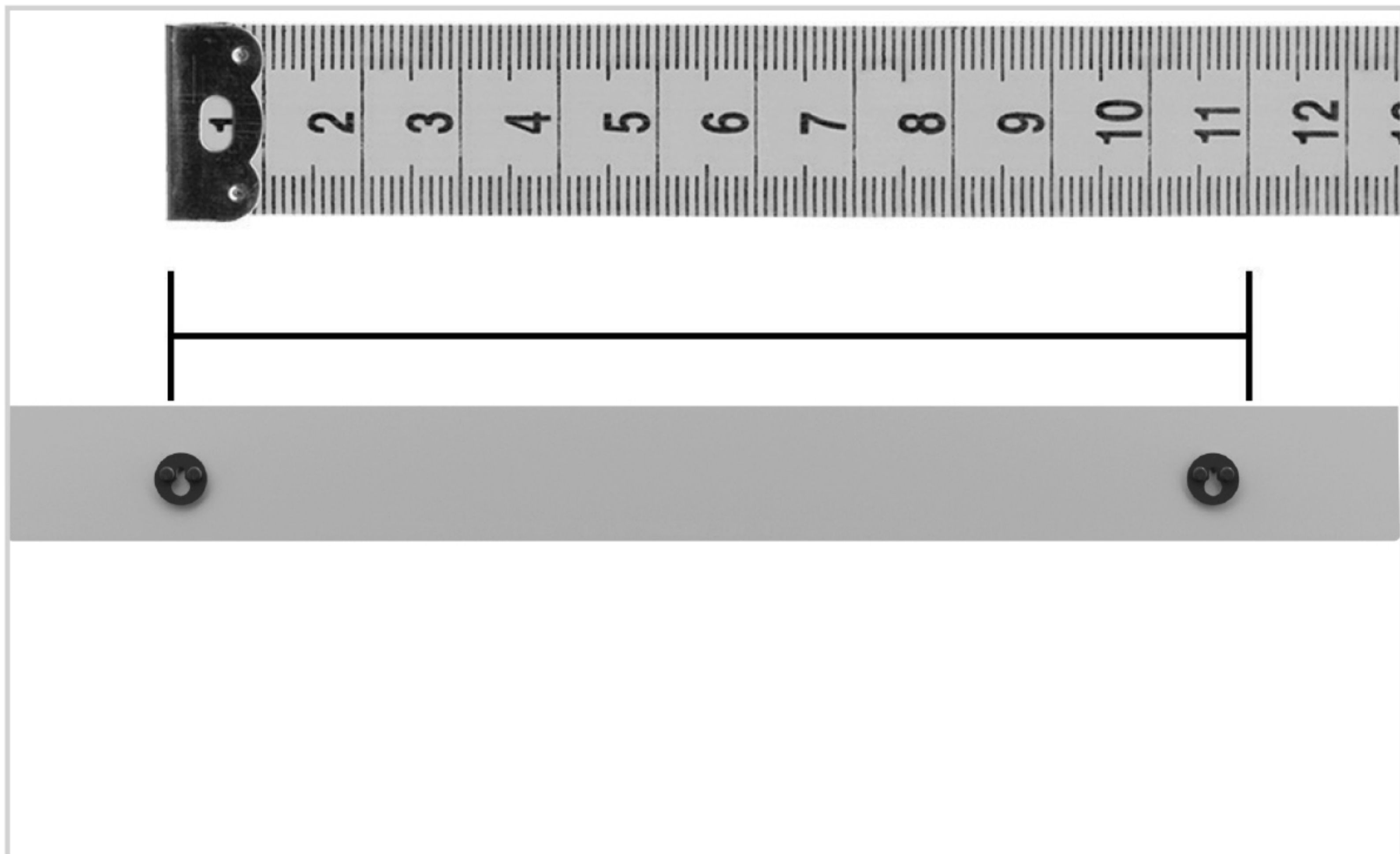
## step 2:

Once the shelf is straight aligned to the wall, make a line running from its one end to the other using a pencil.



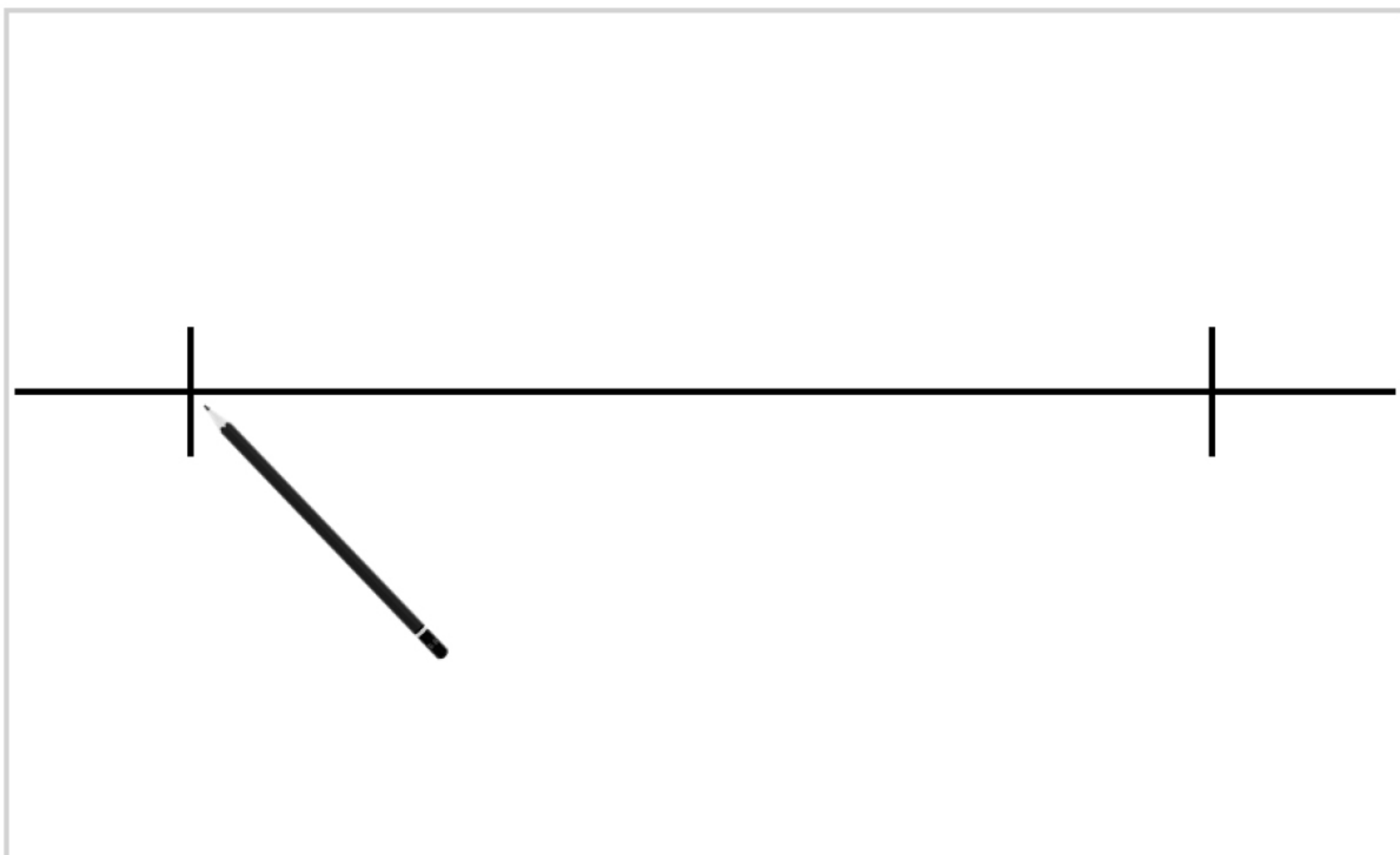
step 3:

Next, measure the distance between the two keyholes using a measuring tool.



step 4:

Place the measuring tool against the line marked on the wall and make two marks on it where you want to mount the shelf.



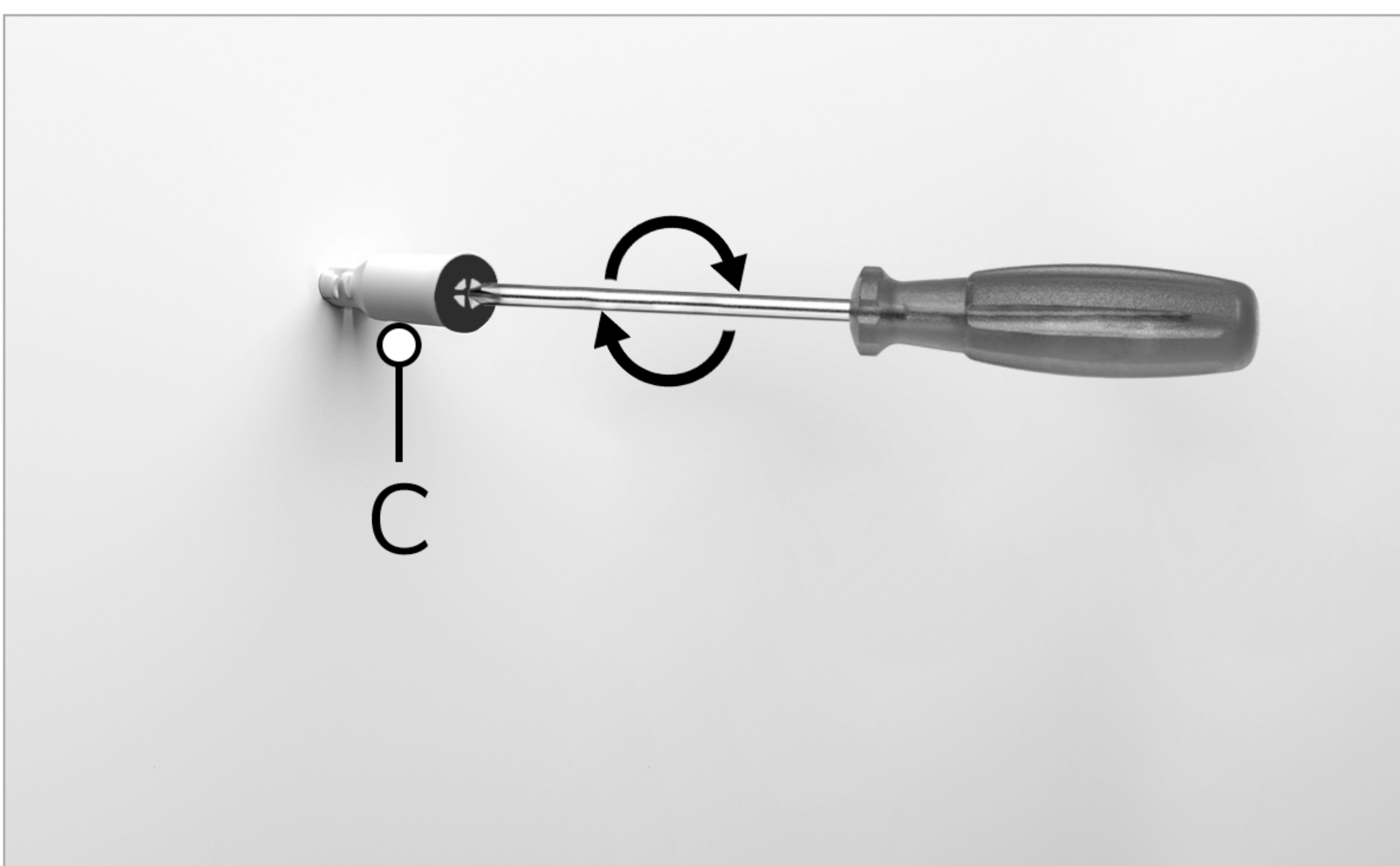
step 3:

Drill holes approx. 10 mm at the points you just marked



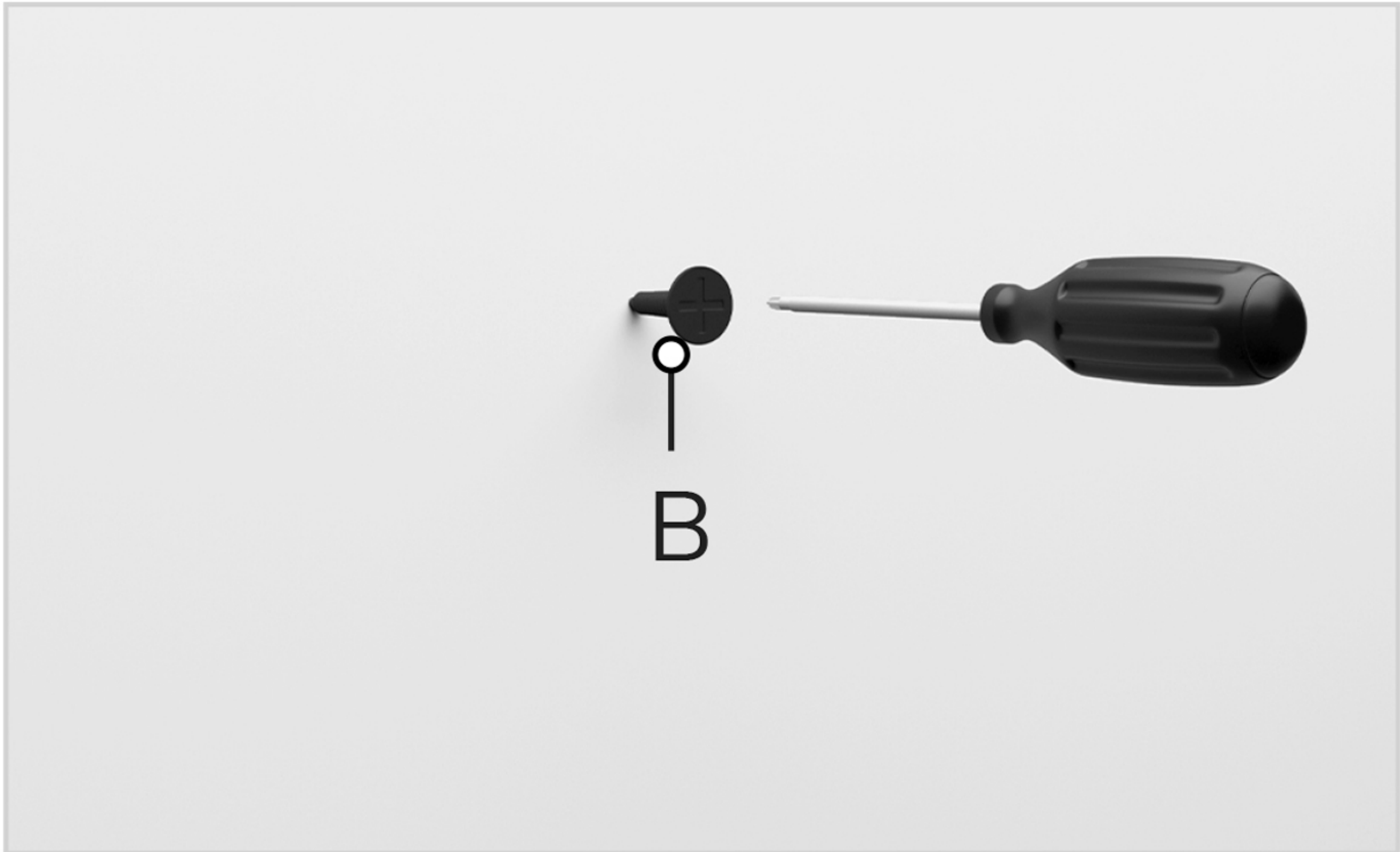
step 4:

Insert the wall plug (C) and tighten with the help of a screwdriver.



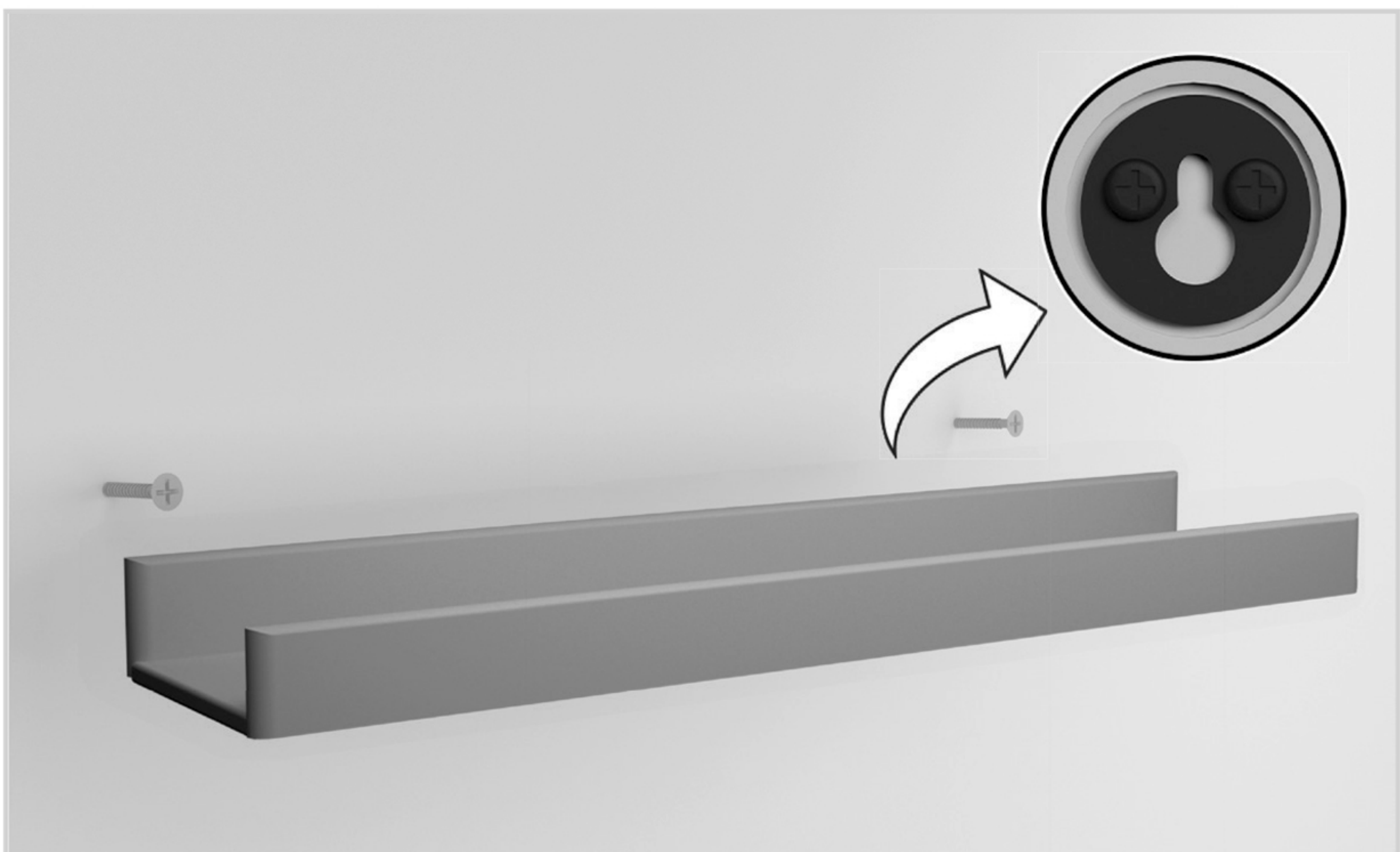
step 7:

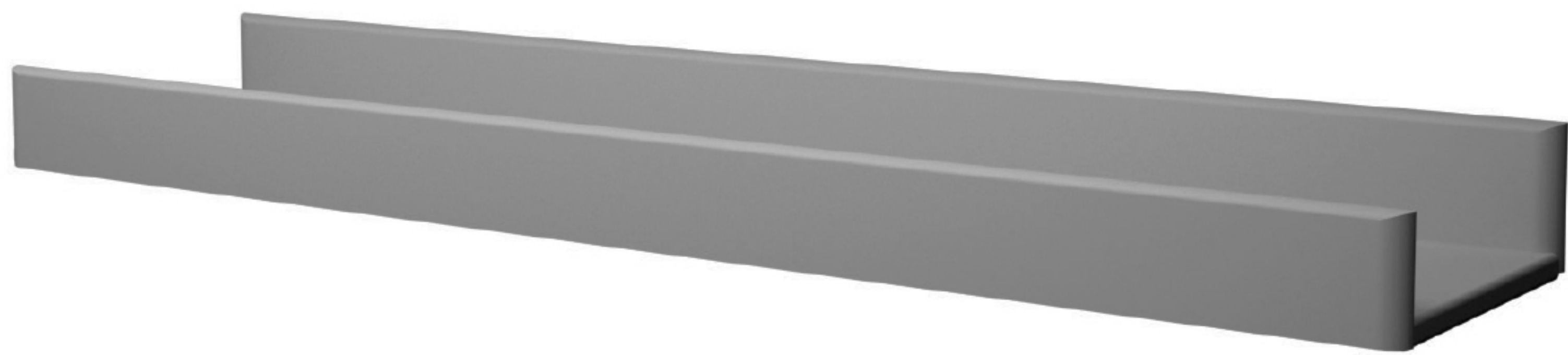
Next, Insert the screws (B) using a screwdriver.



step 8:

Place the keyhole-slots over the screws.





---

**Voila! Your shelf is now installed and secure!**

you've  
got  
a home  
with us

